



State of New Jersey

DEPARTMENT OF ENVIRONMENTAL PROTECTION

PHILIP D. MURPHY
Governor

DIVISION OF WATERSHED PROTECTION AND RESTORATION
BUREAU OF NJPDES STORMWATER PERMITTING & WATER QUALITY MANAGEMENT

SHAWN M. LATOURETTE
Commissioner

SHEILA Y. OLIVER
Lt. Governor

P.O. Box 420 Mail Code 501-02A
Trenton, New Jersey 08625-0420
609-633-7021 / Fax: 609-777-0432

www.njstormwater.org

June 1, 2022

Zachariha J. Kent
Vice President of Product Management
Bio Clean Environmental Services, Inc., a Forterra Company
398 Via El Centro
Oceanside, CA 92058

Re: MTD Lab Certification
Bio Clean Modular Wetlands Linear Stormwater Treatment Device
Online Installation

TSS Removal Rate 80%

Dear Mr. Kent:

The Stormwater Management rules under N.J.A.C. 7:8-5.2(f) and 5.2(j) allow the use of manufactured treatment devices (MTDs) for compliance with the design and performance standards at N.J.A.C. 7:8-5 if the pollutant removal rates have been verified by the New Jersey Corporation for Advanced Technology (NJCAT) and have been certified by the New Jersey Department of Environmental Protection (NJDEP). Bio Clean Environmental Services, Inc., a Forterra company, has requested a Laboratory Certification for the Bio Clean Modular Wetlands Linear Stormwater Treatment Device (Bio Clean MW-L).

The project falls under the "Procedure for Obtaining Verification of a Stormwater Manufactured Treatment Device from New Jersey Corporation for Advance Technology" dated January 25, 2013. The applicable protocol is the "New Jersey Department of Environmental Protection Laboratory Protocol to Assess Total Suspended Solids Removal by a Filtration Manufactured Treatment Device" dated January 25, 2013.

NJCAT verification documents submitted to the NJDEP indicate that the requirements of the aforementioned protocol have been met or exceeded. The NJCAT letter also included a recommended certification TSS removal rate and the required maintenance plan. The NJCAT Verification Report with the Verification Appendix (dated May 2022) for this device is published online at <http://www.njcat.org/verification-process/technology-verification-database.html>.

The NJDEP certifies the use of the Bio Clean MW-L by Bio Clean Environmental Services, Inc. at a TSS removal rate of 80% when designed, operated, and maintained in accordance with the information provided in the Verification Appendix and the following conditions:

1. The maximum treatment flow rate (MTFR) for the manufactured treatment device (MTD) is calculated using the New Jersey Water Quality Design Storm (1.25 inches in 2 hrs) in N.J.A.C. 7:8-5.5. The MTFR is calculated based on a verified loading rate of 2.91 gpm/ft² of effective wetland media surface area and 4.88 gpm/ft of effective pre-filter media surface area.
2. The Bio Clean MW-L shall be installed using the same configuration reviewed by NJCAT, and sized in accordance with the criteria specified in item 8 below.
3. This device cannot be used in series with another MTD or a media filter (such as a sand filter) to achieve an enhanced removal rate for total suspended solids (TSS) removal under N.J.A.C. 7:8-5.5.
4. Additional design criteria for MTDs can be found in Chapter 9.5 of the New Jersey Stormwater Best Management Practices (NJ Stormwater BMP) Manual, which can be found online at www.njstormwater.org.
5. The maintenance plan for a site using this device shall incorporate, at a minimum, the maintenance requirements for the Bio Clean MW-L. A copy of the maintenance plan is attached to this certification. However, it is recommended to review the maintenance website at https://biocleanenvironmental.com/wp-content/uploads/2022/04/Modular-Wetlands-Operation-Maintenance-Manual_4-20-22.pdf for any changes to the maintenance requirements.
6. For an MTD to be considered “green infrastructure” in accordance with the March 2, 2020 amendments to the Stormwater Management rules at N.J.A.C. 7:8, the MTD must meet the GI definition noted at amended N.J.A.C. 7:8-1.2. Specifically, the MTD shall (1) infiltrate into the subsoil; and/or (2) treat stormwater runoff through filtration by vegetation or soil. Any configuration that uses a bio-filtration media and can be configured "above ground" and incorporate a tree box, planter box, or shrubs, etc., would meet the GI definition. Any MTD with bio-filtration media that would be placed "below ground" as a vault without any vegetation can be considered GI (for NJ purposes) only if the device infiltrates the entire Water Quality Design Storm into the subsoil. Further, the below ground device (vault) would need to meet the NJDEP Stormwater BMP Manual conditions of having the soil below the MTD meet the minimum tested infiltration rate of one inch per hour, have at least two feet of separation from the seasonal high water table, and infiltrate into the subsoil.
7. Sizing Requirement:

The example below demonstrates the sizing procedure for the Bio Clean MW-L:

Example: A 0.25-acre impervious site is to be treated to 80% TSS removal using a Bio Clean MW-L. The impervious site runoff (Q) based on the New Jersey Water Quality Design Storm was determined to be 0.79 cfs or 354.58 gpm.

The selection of the appropriate model of a Bio Clean MW-L is based upon both the maximum inflow drainage area and the MTFR. It is necessary to calculate the required model using both methods and to use the largest model determined by the two methods.

Inflow Drainage Area Evaluation:

The drainage area to the Bio Clean MW-L in this example is 0.25 acres. Based upon the information in Table 1 below, all of the Bio Clean MW-L models would be able to treat runoff without exceeding the maximum allowable drainage area.

Maximum Treatment Flow Rate (MTFR) Evaluation:

The site runoff (Q) was based on the following:

time of concentration = 10 minutes

i = 3.2 in/hr (page 21, Fig. 5-10 of Chapter 5 of the NJ Stormwater BMP Manual)

c = 0.99 (runoff coefficient for impervious)

$Q = ciA = 0.99 \times 3.2 \times 0.25 = 0.79$ cfs (354.58 gpm)

(Note: 1 cfs = 448.83 gpm)

Given the site runoff is 0.79 cfs and based on Table 1 below, the Bio Clean MW-L-8-12 model would be the smallest model able to treat the impervious area without exceeding the MTFR of the individual model.

The MTFR evaluation results will be used since that method results in the highest minimum configuration determined by the two methods.

The sizing table corresponding to the available system models is noted below. Additional specifications regarding each model can be found in the NJCAT Verification Report in the Verification Appendix under Table A-1.

Table 1. Bio Clean Modular Wetlands Linear Stormwater Treatment Device Model MTFRs and Maximum Allowable Drainage Area.

Model #	Maximum Treatment Flow Rate (MTFR) (cfs)	Maximum Allowable Drainage Area (acres)	Number of Pre-Filter Cartridges
MW-L-4-4	0.13	0.47	0.5
MW-L-4-6.5	0.17	0.65	1
MW-L-4-8	0.28	1.04	1
MW-L-6-8	0.35	1.32	1.5
MW-L-8-8	0.56	2.07	2
MW-L-8-12	0.83	3.11	3
MW-L-8-16	1.11	4.15	4
MW-L-8-20	1.39	5.19	5

Be advised a detailed maintenance plan is mandatory for any project with a Stormwater BMP subject to the Stormwater Management Rules, N.J.A.C. 7:8. The plan must include all of the items identified in the Stormwater Management Rules, N.J.A.C. 7:8-5.8. Such items include, but are not limited to, the list of

inspection and maintenance equipment and tools, specific corrective and preventative maintenance tasks, indication of problems in the system, and training of maintenance personnel. Additional information can be found in Chapter 8: Maintenance and Retrofit of Stormwater Management Measures.

If you have any questions regarding the above information, please contact Lisa Schaefer of my office at lisa.schaefer@dep.nj.gov.

Sincerely,

A handwritten signature in blue ink that reads "Gabriel Mahon". The signature is written in a cursive style with a large initial "G" and "M".

Gabriel Mahon, Chief
Bureau of NJPDES Stormwater Permitting & Water Quality Management
Division of Watershed Protection and Restoration
New Jersey Department of Environmental Protection

Attachment: Maintenance Plan

cc: Richard Magee, NJCAT



Modular Wetlands[®] Linear

A Stormwater Biofiltration Solution

OPERATION & MAINTENANCE MANUAL



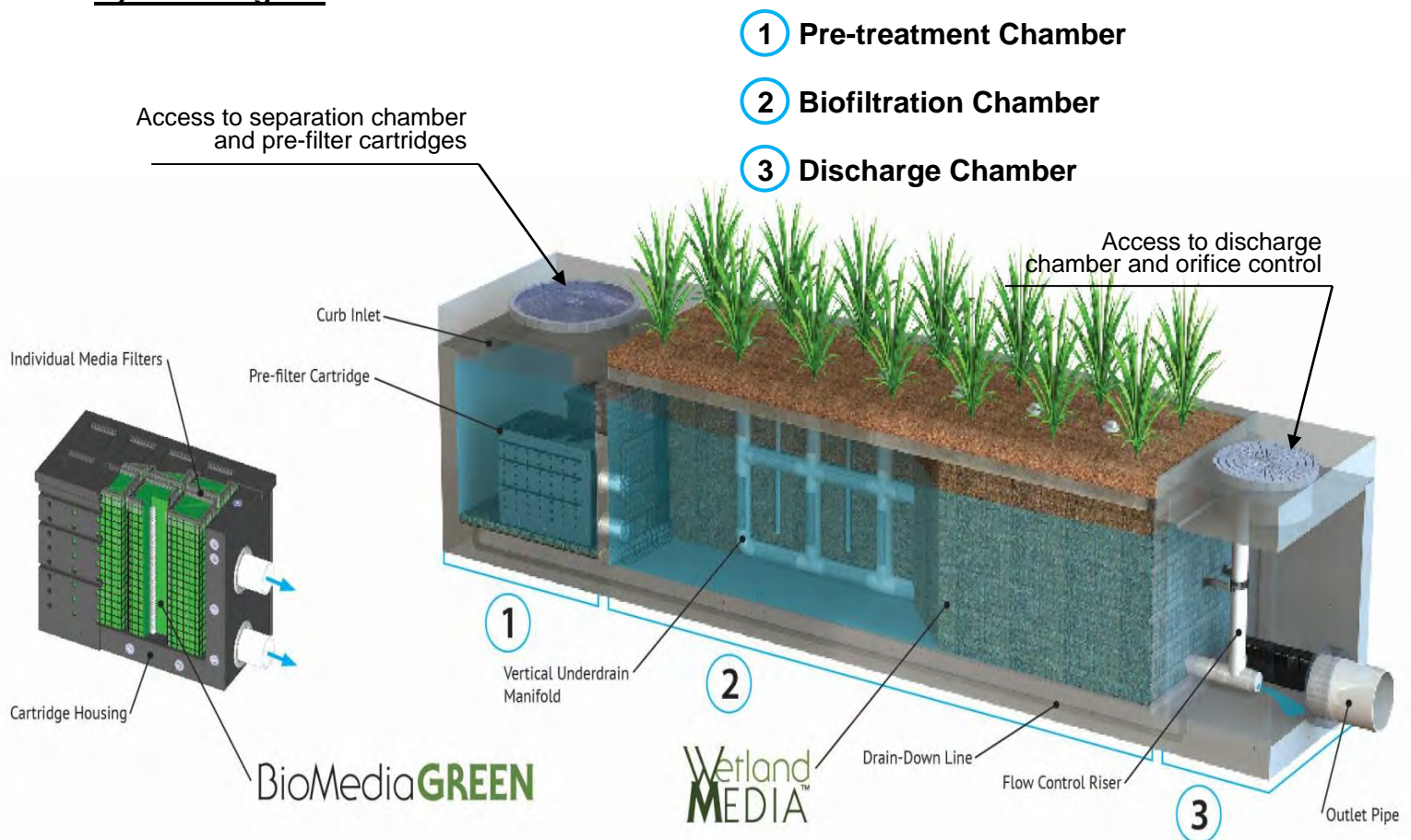


Inspection Guidelines for Modular Wetland System - Linear

Inspection Summary

- Inspect Pre-Treatment, Biofiltration and Discharge Chambers – average inspection interval is 6 to 12 months.
 - *(15 minute average inspection time).*
- NOTE: Pollutant loading varies greatly from site to site and no two sites are the same. Therefore, the first year requires inspection monthly during the wet season and every other month during the dry season in order to observe and record the amount of pollutant loading the system is receiving.

System Diagram



Inspection Overview

As with all stormwater BMPs inspection and maintenance on the MWS Linear is necessary. Stormwater regulations require that all BMPs be inspected and maintained to ensure they are operating as designed to allow for effective pollutant removal and provide protection to receiving water bodies. It is recommended that inspections be performed multiple times during the first year to assess the site specific loading conditions. This is recommended because pollutant loading and pollutant characteristics can vary greatly from site to site. Variables such as nearby soil erosion or construction sites, winter sanding on roads, amount of daily traffic and land use can increase pollutant loading on the system. The first year of inspections can be used to set inspection and maintenance intervals for subsequent years to ensure appropriate maintenance is provided. Without appropriate maintenance a BMP will exceed its storage capacity which can negatively affect its continued performance in removing and retaining captured pollutants.

Inspection Equipment

Following is a list of equipment to allow for simple and effective inspection of the MWS Linear:

- Modular Wetland Inspection Form
- Flashlight
- Manhole hook or appropriate tools to remove access hatches and covers
- Appropriate traffic control signage and procedures
- Measuring pole and/or tape measure.
- Protective clothing and eye protection.
- 7/16" open or closed ended wrench.
- **Large permanent black marker (initial inspections only – first year)**
- Note: entering a confined space requires appropriate safety and certification. It is generally not required for routine inspections of the system.





Inspection Steps

The core to any successful stormwater BMP maintenance program is routine inspections. The inspection steps required on the MWS Linear are quick and easy. As mentioned above the first year should be seen as the maintenance interval establishment phase. During the first year more frequent inspections should occur in order to gather loading data and maintenance requirements for that specific site. This information can be used to establish a base for long term inspection and maintenance interval requirements.

The MWS Linear can be inspected through visual observation without entry into the system. All necessary pre-inspection steps must be carried out before inspection occurs, especially traffic control and other safety measures to protect the inspector and near-by pedestrians from any dangers associated with an open access hatch or manhole. Once these access covers have been safely opened the inspection process can proceed:

- Prepare the inspection form by writing in the necessary information including project name, location, date & time, unit number and other info (see inspection form).
- Observe the inside of the system through the access hatches. If minimal light is available and vision into the unit is impaired utilize a flashlight to see inside the system and all of its chambers.
- Look for any out of the ordinary obstructions in the inflow pipe, pre-treatment chamber, biofiltration chamber, discharge chamber or outflow pipe. Write down any observations on the inspection form.
- Through observation and/or digital photographs estimate the amount of trash, debris and sediment accumulated in the pre-treatment chamber. Utilizing a tape measure or measuring stick estimate the amount of trash, debris and sediment in this chamber. Record this depth on the inspection form.

- Through visual observation inspect the condition of the pre-filter cartridges. Look for excessive build-up of sediments on the cartridges, any build-up on the top of the cartridges, or clogging of the holes. Record this information on the inspection form. The pre-filter cartridges can further be inspected by removing the cartridge tops and assessing the color of the BioMediaGREEN filter cubes (requires entry into pre-treatment chamber – see notes above regarding confined space entry). Record the color of the material. New material is a light green in color. As the media becomes clogged it will turn darker in color, eventually becoming dark brown or black. Using the below color indicator record the percentage of media exhausted.



- The biofiltration chamber is generally maintenance free due to the system's advanced pre-treatment chamber. For units which have open planters with vegetation it is recommended that the vegetation be inspected. Look for any plants that are dead or showing signs of disease or other negative stressors. Record the general health of the plants on the inspection and indicate through visual observation or digital photographs if trimming of the vegetation is needed.
- The discharge chamber houses the orifice control structure, drain down filter and is connected to the outflow pipe. It is important to check to ensure the orifice is in proper operating conditions and free of any obstructions. It is also important to assess the condition of the drain down filter media which utilizes a block form of the BioMediaGREEN. Assess in the same manner as the cubes in the Pre-Filter Cartridge as mentioned above. Generally, the discharge chamber will be clean and free of debris. Inspect the water marks on the side walls. If possible, inspect the discharge chamber during a rain event to assess the amount of flow leaving the system while it is at 100% capacity (pre-treatment chamber water level at peak HGL). The water level of the flowing water should be compared to the watermark level on the side walls which is an indicator of the highest discharge rate the system achieved when initially installed. Record on the form if there is any difference in level from watermark in inches.

- NOTE: During the first few storms the water level in the outflow chamber should be observed and a 6" long horizontal watermark line drawn (using a large permanent marker) at the water level in the discharge chamber while the system is operating at 100% capacity. The diagram below illustrates where a line should be drawn. This line is a reference point for future inspections of the system:



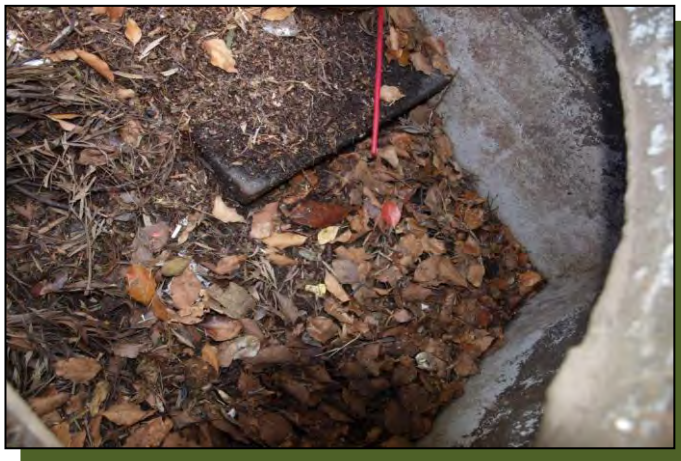
Using a permanent marker draw a 6 inch long horizontal line, as shown, at the higher water level in the MWS Linear discharge chamber.

- Water level in the discharge chamber is a function of flow rate and pipe size. Observation of water level during the first few months of operation can be used as a benchmark level for future inspections. The initial mark and all future observations shall be made when system is at 100% capacity (water level at maximum level in pre-treatment chamber). If future water levels are below this mark when system is at 100% capacity this is an indicator that maintenance to the pre-filter cartridges may be needed.
- Finalize inspection report for analysis by the maintenance manager to determine if maintenance is required.

Maintenance Indicators

Based upon observations made during inspection, maintenance of the system may be required based on the following indicators:

- Missing or damaged internal components or cartridges.
- Obstructions in the system or its inlet or outlet.
- Excessive accumulation of floatables in the pre-treatment chamber in which the length and width of the chamber is fully impacted more than 18”.



- Excessive accumulation of sediment in the pre-treatment chamber of more than 6” in depth.



- Excessive accumulation of sediment on the BioMediaGREEN media housed within the pre-filter cartridges. The following chart shows photos of the condition of the BioMediaGREEN contained within the pre-filter cartridges. When media is more than 85% clogged replacement is required.



- Excessive accumulation of sediment on the BioMediaGREEN media housed within the drain down filter. The following photos show of the condition of the BioMediaGREEN contained within the drain down filter. When media is more than 85% clogged replacement is required.



- Overgrown vegetation.



- Water level in discharge chamber during 100% operating capacity (pre-treatment chamber water level at max height) is lower than the watermark by 20%.



Inspection Notes

1. Following maintenance and/or inspection, it is recommended the maintenance operator prepare a maintenance/inspection record. The record should include any maintenance activities performed, amount and description of debris collected, and condition of the system and its various filter mechanisms.
2. The owner should keep maintenance/inspection record(s) for a minimum of five years from the date of maintenance. These records should be made available to the governing municipality for inspection upon request at any time.
3. Transport all debris, trash, organics and sediments to approved facility for disposal in accordance with local and state requirements.
4. Entry into chambers may require confined space training based on state and local regulations.
5. No fertilizer shall be used in the Biofiltration Chamber.
6. Irrigation should be provided as recommended by manufacturer and/or landscape architect. Amount of irrigation required is dependent on plant species. Some plants may not require irrigation after initial establishment.

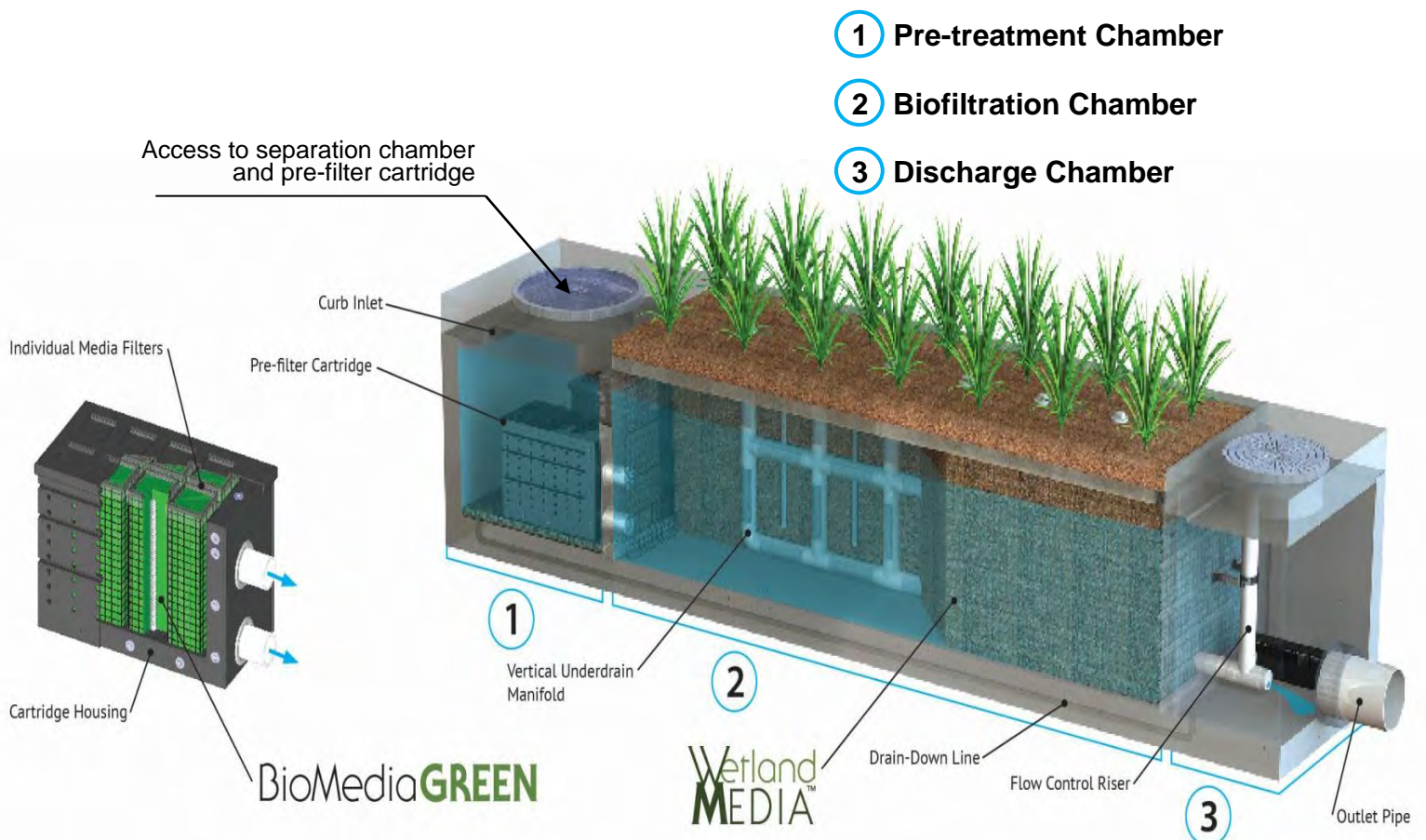


Maintenance Guidelines for Modular Wetland System - Linear

Maintenance Summary

- Remove Sediment from Pre-Treatment Chamber – average maintenance interval is 12 to 24 months.
 - (10 minute average service time).
- Replace Pre-Filter Cartridge Media – average maintenance interval 12 to 24 months.
 - (10-15 minute per cartridge average service time).
- Trim Vegetation – average maintenance interval is 6 to 12 months.
 - (Service time varies).

System Diagram



Maintenance Overview

The time has come to maintain your Modular Wetland System Linear (MWS Linear). To ensure successful and efficient maintenance on the system we recommend the following. The MWS Linear can be maintained by removing the access hatches over the systems various chambers. All necessary pre-maintenance steps must be carried out before maintenance occurs, especially traffic control and other safety measures to protect the inspector and near-by pedestrians from any dangers associated with an open access hatch or manhole. Once traffic control has been set up per local and state regulations and access covers have been safely opened the maintenance process can begin. It should be noted that some maintenance activities require confined space entry. All confined space requirements must be strictly followed before entry into the system. In addition the following is recommended:

- Prepare the maintenance form by writing in the necessary information including project name, location, date & time, unit number and other info (see maintenance form).
- Set up all appropriate safety and cleaning equipment.
- Ensure traffic control is set up and properly positioned.
- Prepare a pre-checks (OSHA, safety, confined space entry) are performed.

Maintenance Equipment

Following is a list of equipment required for maintenance of the MWS Linear:

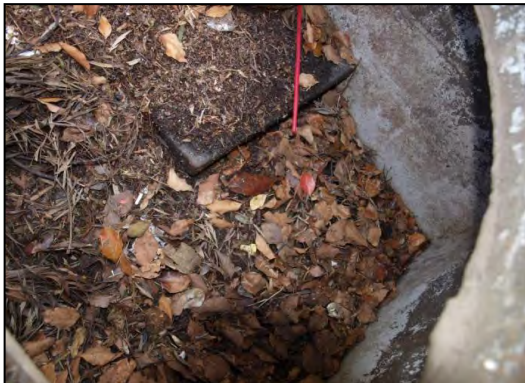
- Modular Wetland Maintenance Form
- Manhole hook or appropriate tools to access hatches and covers
- Protective clothing, flashlight and eye protection.
- 7/16" open or closed ended wrench.
- Vacuum assisted truck with pressure washer.
- Replacement BioMediaGREEN for Pre-Filter Cartridges if required (order from manufacturer).



Maintenance Steps

1. Pre-treatment Chamber (bottom of chamber)

- A. Remove access hatch or manhole cover over pre-treatment chamber and position vacuum truck accordingly.
- B. With a pressure washer spray down pollutants accumulated on walls and pre-filter cartridges.
- C. Vacuum out Pre-Treatment Chamber and remove all accumulated pollutants including trash, debris and sediments. Be sure to vacuum the floor until pervious pavers are visible and clean.
- D. If Pre-Filter Cartridges require media replacement move onto step 2. If not, replace access hatch or manhole cover.



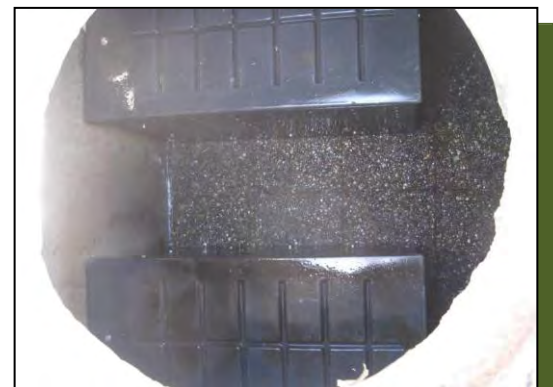
Removal of access hatch to gain access below.



Insertion of vacuum hose into separation chamber.



Removal of trash, sediment and debris.



Fully cleaned separation chamber.

2. Pre-Filter Cartridges (attached to wall of pre-treatment chamber)

- A. After finishing step 1 enter pre-treatment chamber.
- B. Unscrew the two bolts holding the lid on each cartridge filter and remove lid.

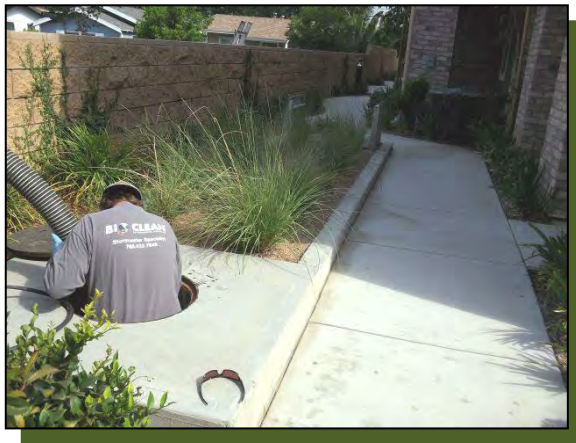


Pre-filter cartridges with tops on.



Inside cartridges showing media filters ready for replacement.

- C. Place the vacuum hose over each individual media filter to suck out filter media.



Vacuuming out of media filters.

- D. Once filter media has been sucked use a pressure washer to spray down inside of the cartridge and it's containing media cages. Remove cleaned media cages and place to the side. Once removed the vacuum hose can be inserted into the cartridge to vacuum out any remaining material near the bottom of the cartridge.

- E. Reinstall media cages and fill with new media from manufacturer or outside supplier. Manufacturer will provide specification of media and sources to purchase. Utilize the manufacture provided refilling tray and place on top of cartridge. Fill tray with new bulk media and shake down into place. Using your hands slightly compact media into each filter cage. Once cages are full removed refilling tray and replace cartridge top ensuring bolts are properly tightened.



Refilling tray for media replacement.



Refilling tray on cartridge with bulk media.



- F. Exit pre-treatment chamber. Replace access hatch or manhole cover.

3. Biofiltration Chamber (middle vegetated chamber)

- A. In general, the biofiltration chamber is maintenance free with the exception of maintaining the vegetation. Using standard gardening tools properly trim back the vegetation to healthy levels. The MWS Linear utilizes vegetation similar to surrounding landscape areas therefore trim vegetation to match surrounding vegetation. If any plants have died replace plants with new ones:



B. Over time, sediment will accumulate in the perimeter void area and will need to be vacuumed out. The media surface may also require power washing if it becomes occluded with sediment. In addition, the wetland media will eventually need to be replaced after 10 plus years of service.

4. Discharge Chamber (contains drain down cartridge & connected to pipe)

- A. Remove access hatch or manhole cover over discharge chamber.
- B. Enter chamber to gain access to the drain down filter. Unlock the locking mechanism and lift up drain down filter housing to remove used BioMediaGREEN filter block as shown below:



- C. Insert new BioMediaGREEN filter block and lock drain down filter housing back in place. Replace access hatch or manhole cover over discharge chamber.



Inspection Notes

1. Following maintenance and/or inspection, it is recommended the maintenance operator prepare a maintenance/inspection record. The record should include any maintenance activities performed, amount and description of debris collected, and condition of the system and its various filter mechanisms.
2. The owner should keep maintenance/inspection record(s) for a minimum of five years from the date of maintenance. These records should be made available to the governing municipality for inspection upon request at any time.
3. Transport all debris, trash, organics and sediments to approved facility for disposal in accordance with local and state requirements.
4. Entry into chambers may require confined space training based on state and local regulations.
5. No fertilizer shall be used in the Biofiltration Chamber.
6. Irrigation should be provided as recommended by manufacturer and/or landscape architect. Amount of irrigation required is dependent on plant species. Some plants may not require irrigation after initial establishment.

Inspection Form



Modular Wetland System, Inc.

P. 760.433-7640

F. 760-433-3176

E. Info@modularwetlands.com

www.modularwetlands.com



Maintenance Report



Modular Wetland System, Inc.

P. 760.433-7640

F. 760-433-3176

E. Info@modularwetlands.com

www.modularwetlands.com