

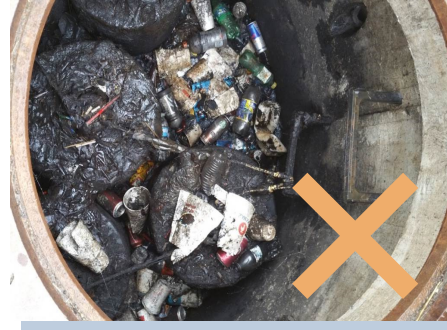
Stormwater Control Measures (SCM)

What is a Water Quality Unit?

Water quality units are premanufactured units that are designed to filter out pollutants before discharging stormwater to the downstream drainage system. The structures require frequent maintenance as they are, by design, limited on volume of pollutant storage.



*properly
maintained
and
functional*



*trash and
sediment
accumulation
from
improper
maintenance*

Maintaining Your Stormwater Control Measure

Property owners are responsible for inspecting and maintaining SCMs on their property. Inspection and maintenance requirements for your specific SCM are filed with your property deed.

These documents are available through the Metro Nashville Register of Deeds.

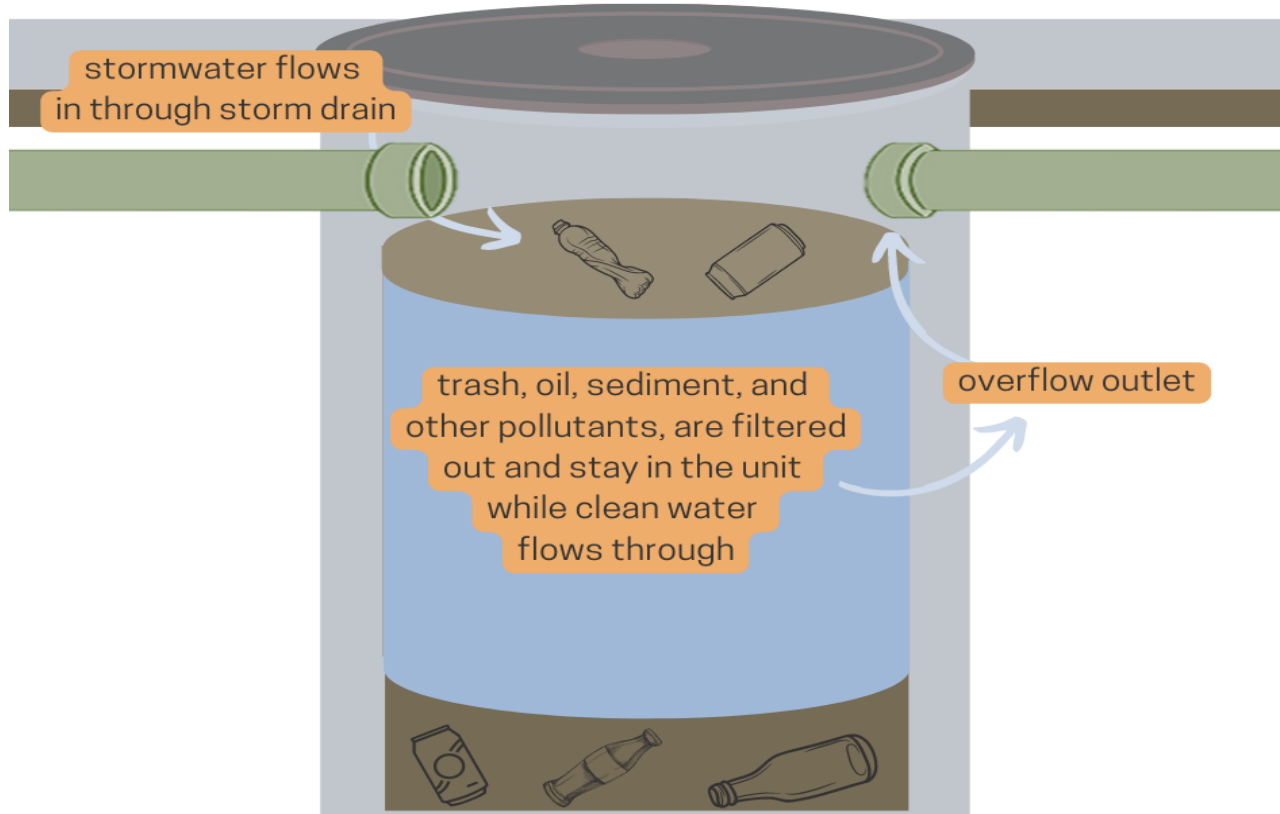
Typical Inspection and Maintenance Concerns Include:

- Determine what type of unit you have, and visit the manufacturer's website to determine specific inspection and maintenance requirements.
- **Do NOT enter a water quality unit** as they are considered to be confined spaces. Any entry into the unit must comply with OSHA's Confined Space Permit program.
- Locate the underground water quality device, typically found under a man hole. Carefully open the manhole/lid, and inspect the unit. Look for excess sediment, trash, and oil sheens. If the unit is filled over the manufacturer's stated treatment capacity, it is no longer functioning.
- Use a stick or other measuring device to measure the depth of settled sediment in the bottom of the structure.
- All material should be removed from the structure and not discharged into the storm sewer system. Materials should be properly disposed of, and disposal records should be maintained.
- Some units have filter cartridges that require frequent replacement.
- If maintenance needs are identified during the inspection, ensure that service is performed in a timely manner to prevent larger problems from occurring in the future.

For more information, visit scm.nashville.gov or call Metro Water Services at (615) 880-2420



How does a Water Quality Unit work?



Each unit, unique to the manufacturer, receives water from the storm drain and uses various methods to filter out pollutants. The filtered water leaves via the overflow outlet during normal conditions. When the unit is storing more pollutants than permitted by the manufacturer's stated treatment capacity, the overflow outlet allows pollutants to bypass treatment. Regular maintenance is required to avoid untreated stormwater from entering the storm system.

Water Quality Units Needing Maintenance:



Non-functioning filters



Unit full of trash



Trash screen displaced

