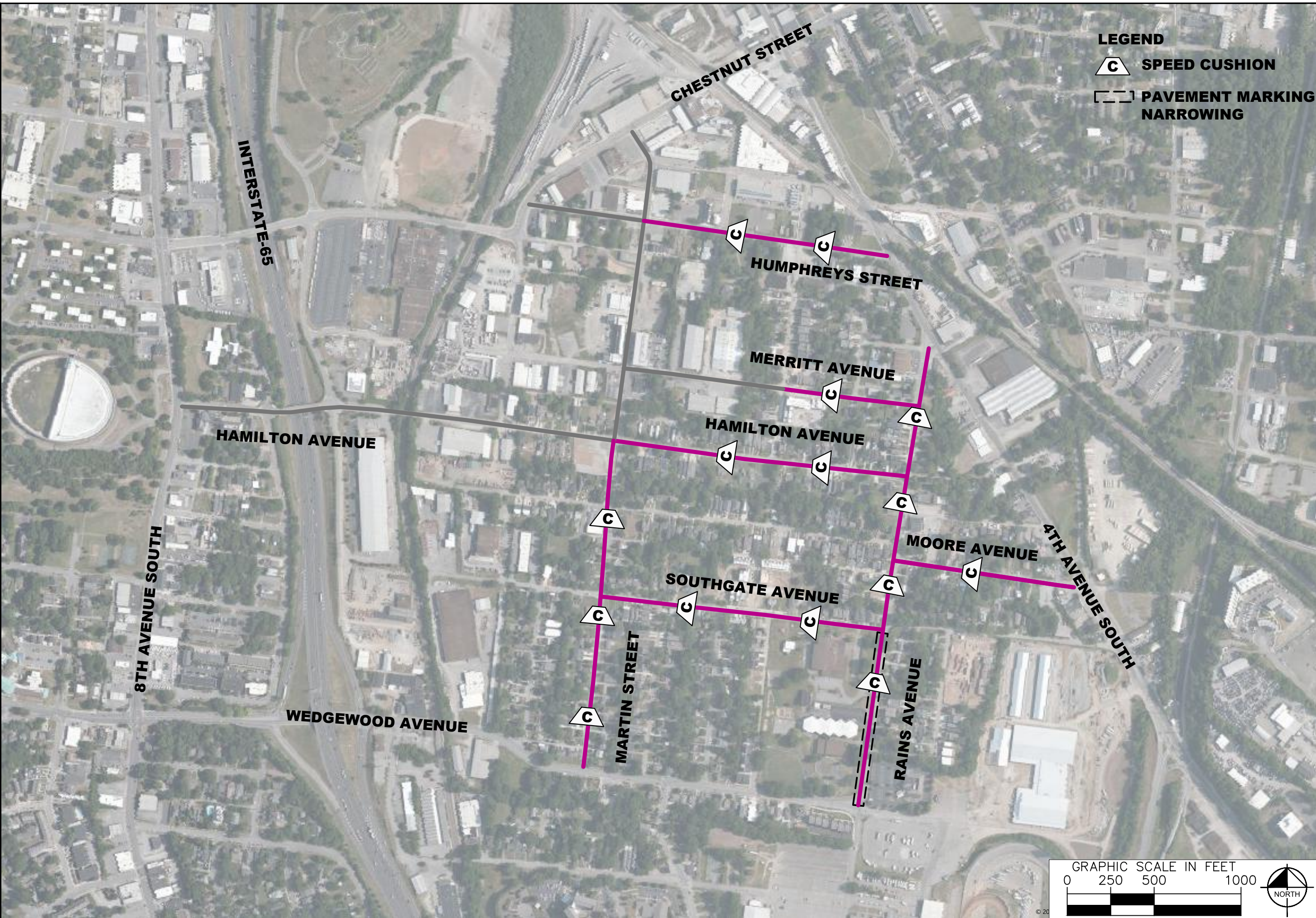


This document, together with the concepts and designs presented herein, is intended only for the specific purpose and client for which it was prepared. Reuse of and improper reliance on the documents without written authorization and adaptation by Kimley-Horn and Associates, Inc. shall be without liability to Kimley-Horn and Associates, Inc.



**LEGEND**

**SPEED CUSHION**

**PAVEMENT MARKING NARROWING**



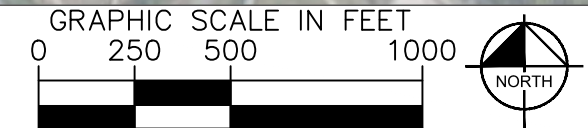
**SOUTH NASHVILLE  
ACTION PEOPLE (SNAP)  
TRAFFIC CALMING**  
NASHVILLE, TN

**DRAFT  
PRELIMINARY  
PLANS**  
FOR REVIEW ONLY

NO.	DATE	BY
1		
2		
3		
4		
5		
6		
7		
8		
9		
10		

DESIGNED BY:	RBW
DRAWN BY:	EMT
CHECKED BY:	NDOT
DATE:	8/24/2022
KIMLEY-HORN PROJECT NO. 11890005	



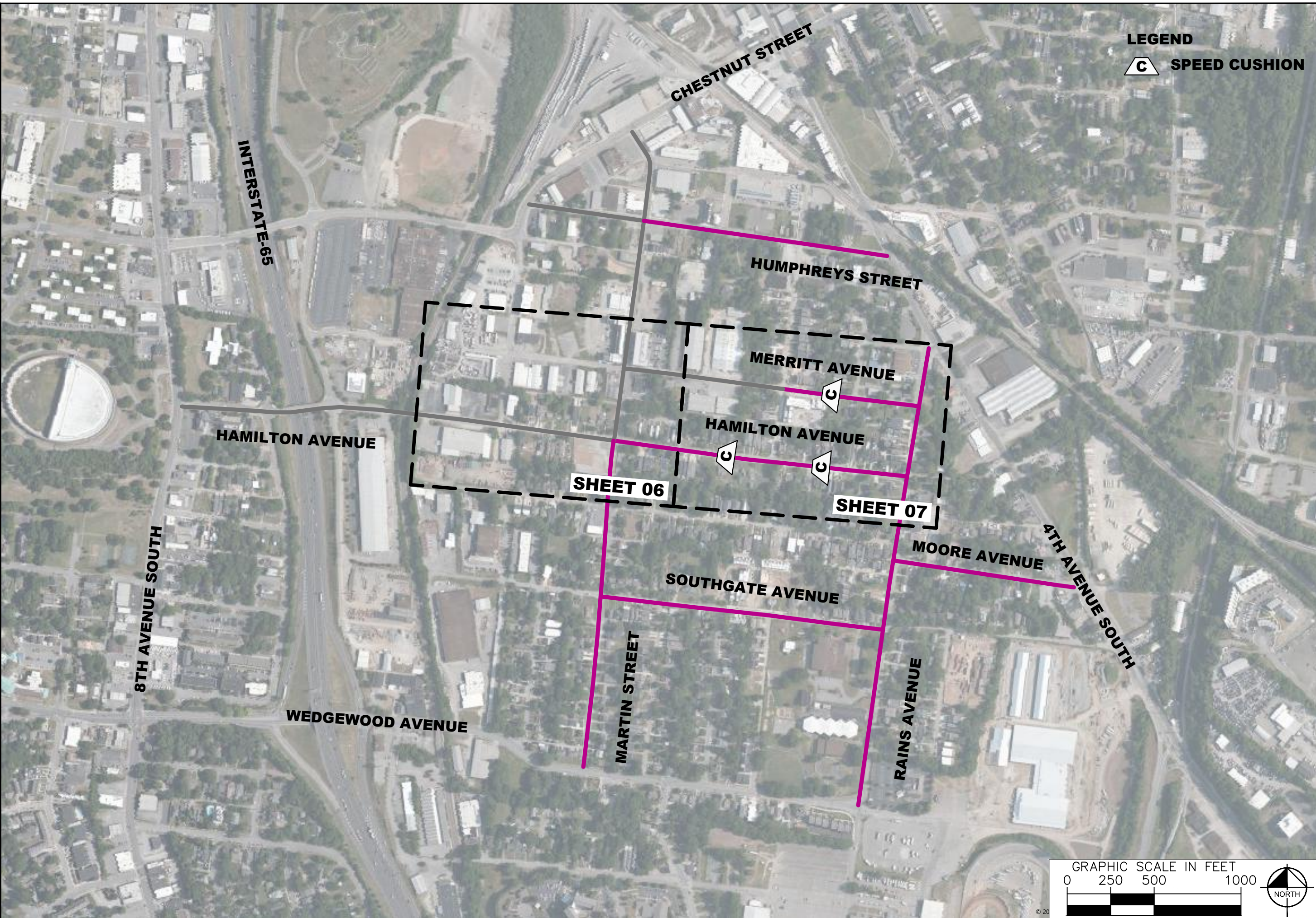
CONCEPT PLAN

SHEET NUMBER

**01**



This document, together with the concepts and designs presented herein, is intended only for the specific purpose and client for which it was prepared. Reuse of and improper reliance on the documents without written authorization and adaptation by Kimley-Horn and Associates, Inc. shall be without liability to Kimley-Horn and Associates, Inc.



**LEGEND**  
C SPEED CUSHION

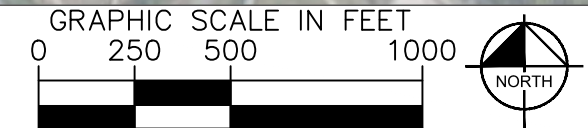
**NDOT**

**SOUTH NASHVILLE  
ACTION PEOPLE (SNAP)  
TRAFFIC CALMING  
NASHVILLE, TN**

**DRAFT  
PRELIMINARY  
PLANS  
FOR REVIEW ONLY**

NO.	DATE	BY	REVISIONS
1			
2			
3			
4			
5			
6			
7			
8			
9			
10			

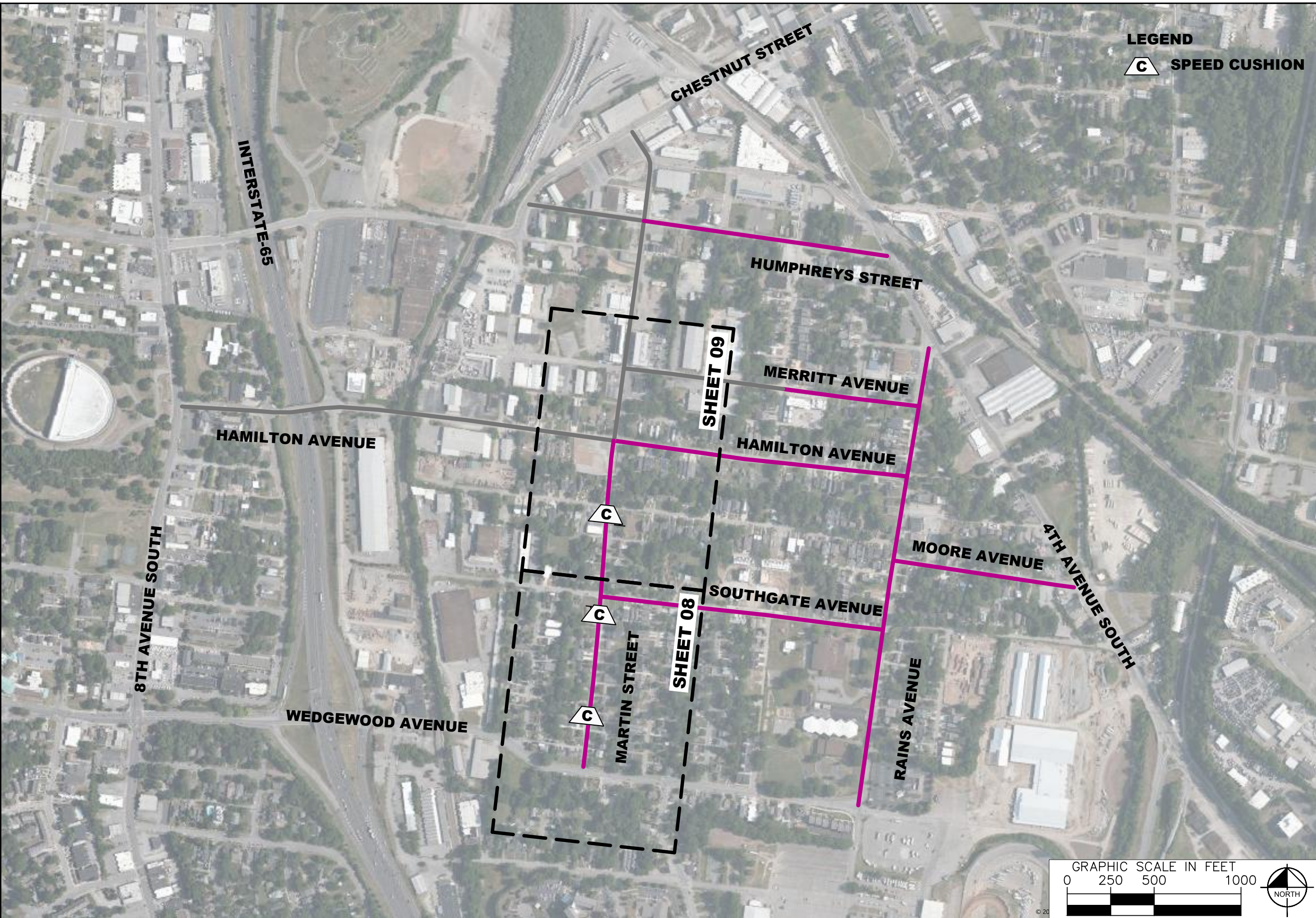
DESIGNED BY: RBN  
DRAWN BY: EMT  
CHECKED BY: NDOT  
DATE: 8/24/2022  
KIMLEY-HORN PROJECT NO. 11890005



CONCEPT PLAN  
SHEET NUMBER  
**02**



This document, together with the concepts and designs presented herein, is intended only for the specific purpose and client for which it was prepared. Reuse of and improper reliance on the documents without written authorization and adaptation by Kimley-Horn and Associates, Inc. shall be without liability to Kimley-Horn and Associates, Inc.



**LEGEND**  
C SPEED CUSHION



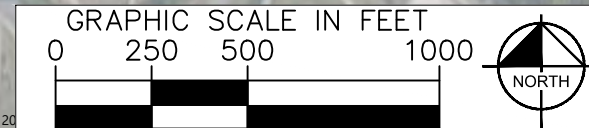
**SOUTH NASHVILLE  
ACTION PEOPLE (SNAP)  
TRAFFIC CALMING**  
NASHVILLE, TN

**DRAFT  
PRELIMINARY  
PLANS**  
FOR REVIEW ONLY

NO.	DATE	BY	REVISIONS
1			
2			
3			
4			
5			
6			
7			
8			
9			
10			

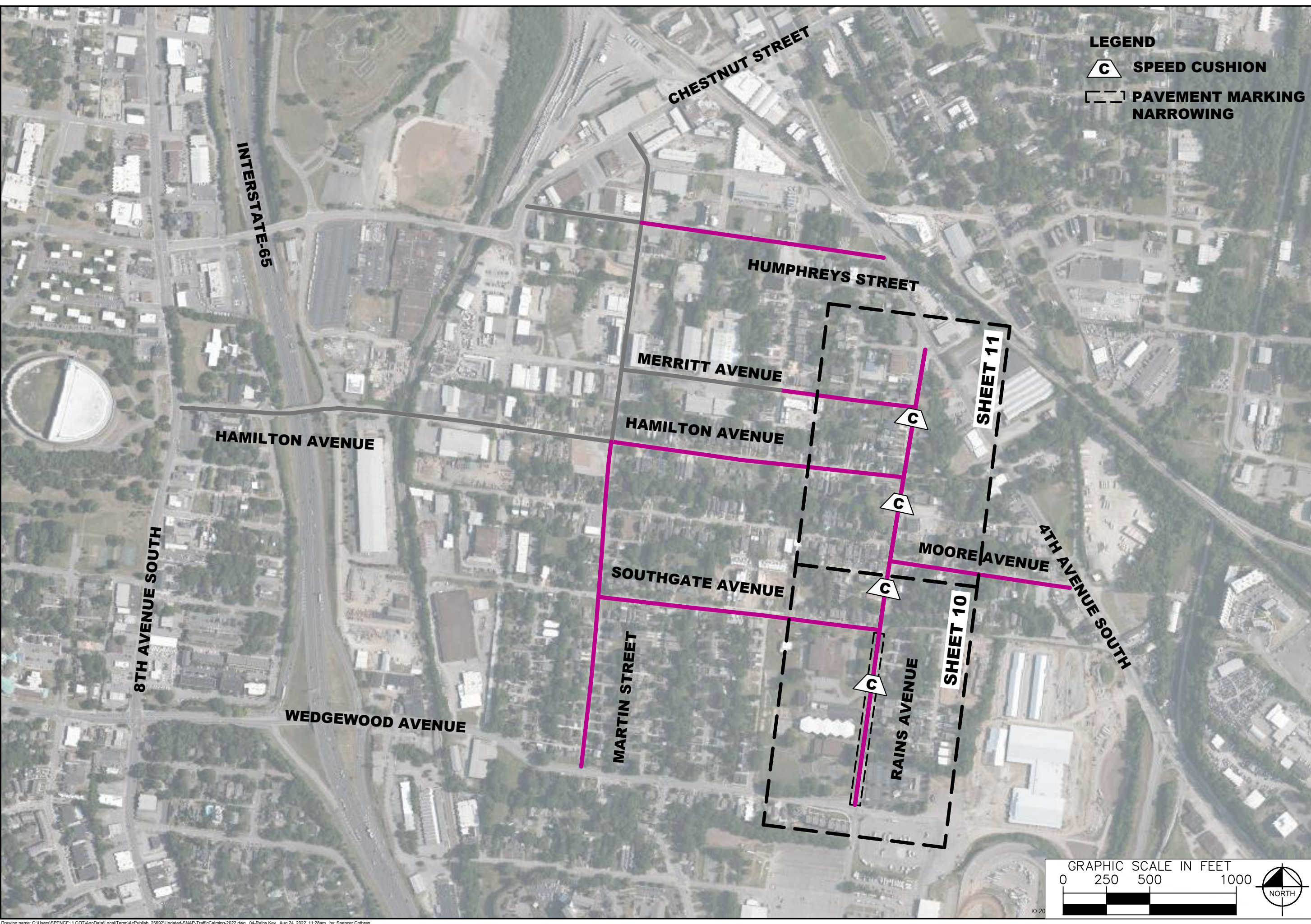
DESIGNED BY: RBN  
 DRAWN BY: EMT  
 CHECKED BY: NDOT  
 DATE: 8/24/2022  
 KIMLEY-HORN PROJECT NO. 11890005

CONCEPT PLAN  
 SHEET NUMBER  
**03**





This document, together with the concepts and designs presented herein, is intended only for the specific purpose and client for which it was prepared. Release of and improper reliance on the documents without written authorization and adaptation by Kimley-Horn and Associates, Inc. shall be without liability to Kimley-Horn and Associates, Inc.



**LEGEND**

-  **SPEED CUSHION**
-  **PAVEMENT MARKING NARROWING**



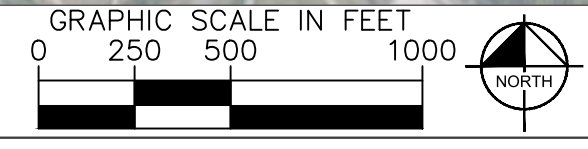
**SOUTH NASHVILLE  
ACTION PEOPLE (SNAP)  
TRAFFIC CALMING**  
NASHVILLE, TN

**DRAFT  
PRELIMINARY  
PLANS**  
FOR REVIEW ONLY

NO.	DATE	BY
1		
2		
3		
4		
5		
6		
7		
8		
9		
10		

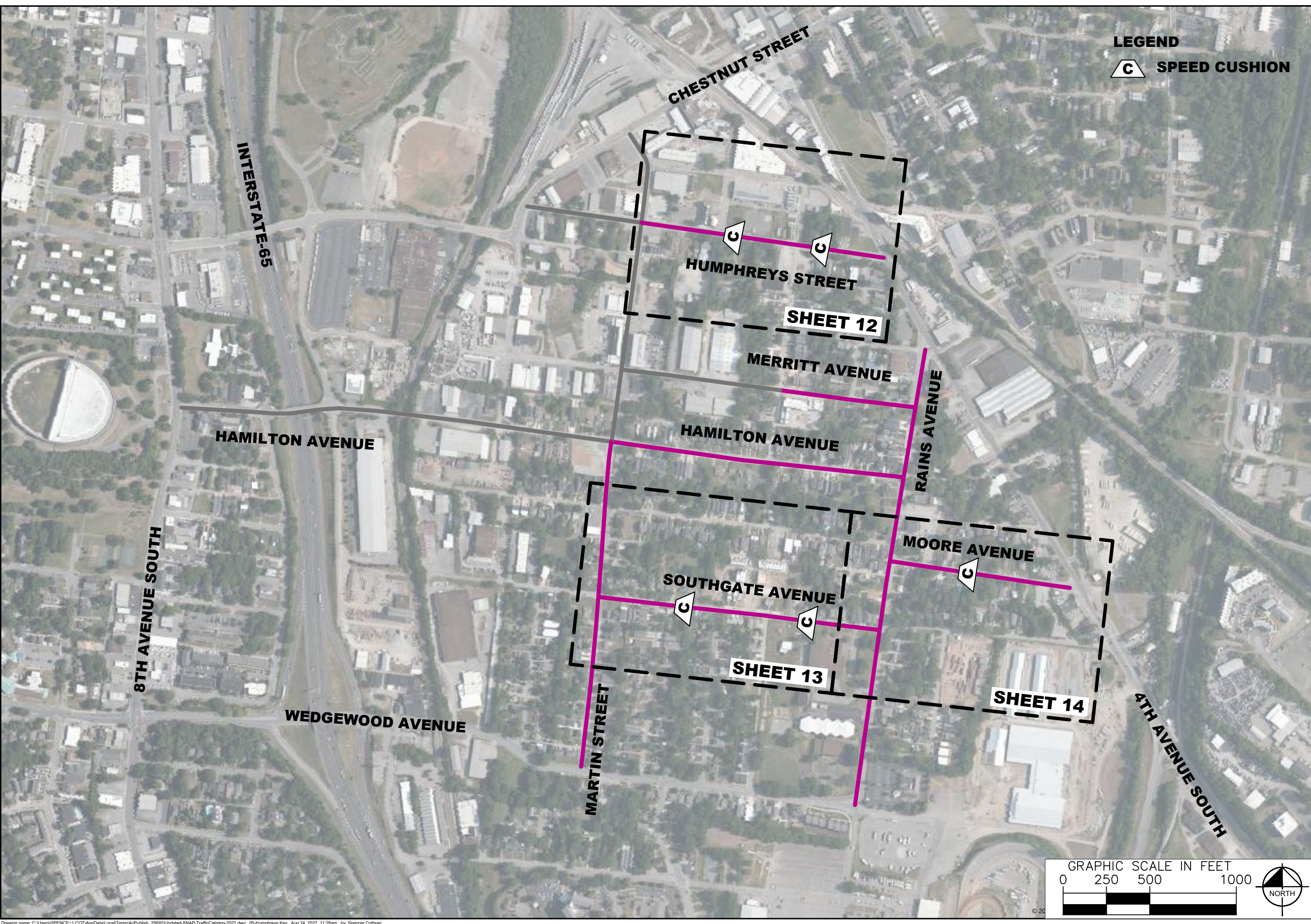
DESIGNED BY:	EBM
DRAWN BY:	EMT
CHECKED BY:	NDQT
DATE:	8/24/2022
KIMLEY-HORN PROJECT NO. 11890005	

CONCEPT PLAN  
SHEET NUMBER  
**04**





This document, together with the concepts and designs presented herein, is intended only for the specific purpose and client for which it was prepared. Release of and improper reliance on the documents without written authorization and adaptation by Kimley-Horn and Associates, Inc. shall be without liability to Kimley-Horn and Associates, Inc.



**LEGEND**  
 **SPEED CUSHION**



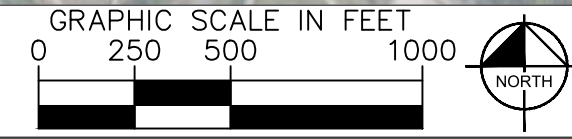
**SOUTH NASHVILLE  
 ACTION PEOPLE (SNAP)  
 TRAFFIC CALMING**  
 NASHVILLE, TN

**DRAFT  
 PRELIMINARY  
 PLANS**  
 FOR REVIEW ONLY

NO.	DATE	BY
1		
2		
3		
4		
5		
6		
7		
8		
9		
10		

DESIGNED BY: RBN  
 DRAWN BY: EMT  
 CHECKED BY: NDOT  
 DATE: 8/24/2022  
 KIMLEY-HORN PROJECT NO. 11890005

CONCEPT PLAN  
 SHEET NUMBER  
**05**





This document, together with the concepts and designs presented herein, is intended only for the specific purpose and client for which it was prepared. Reuse of and improper reliance on the document without written authorization and adaptation by Kimley-Horn and Associates, Inc. shall be without liability to Kimley-Horn and Associates, Inc.

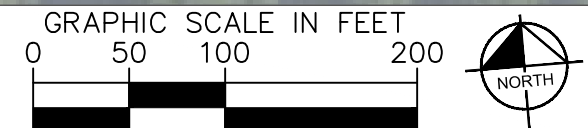


**SOUTH NASHVILLE  
ACTION PEOPLE (SNAP)  
TRAFFIC CALMING**  
NASHVILLE, TN

**DRAFT  
PRELIMINARY  
PLANS**  
FOR REVIEW ONLY

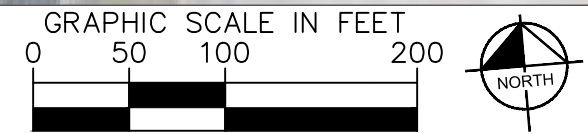
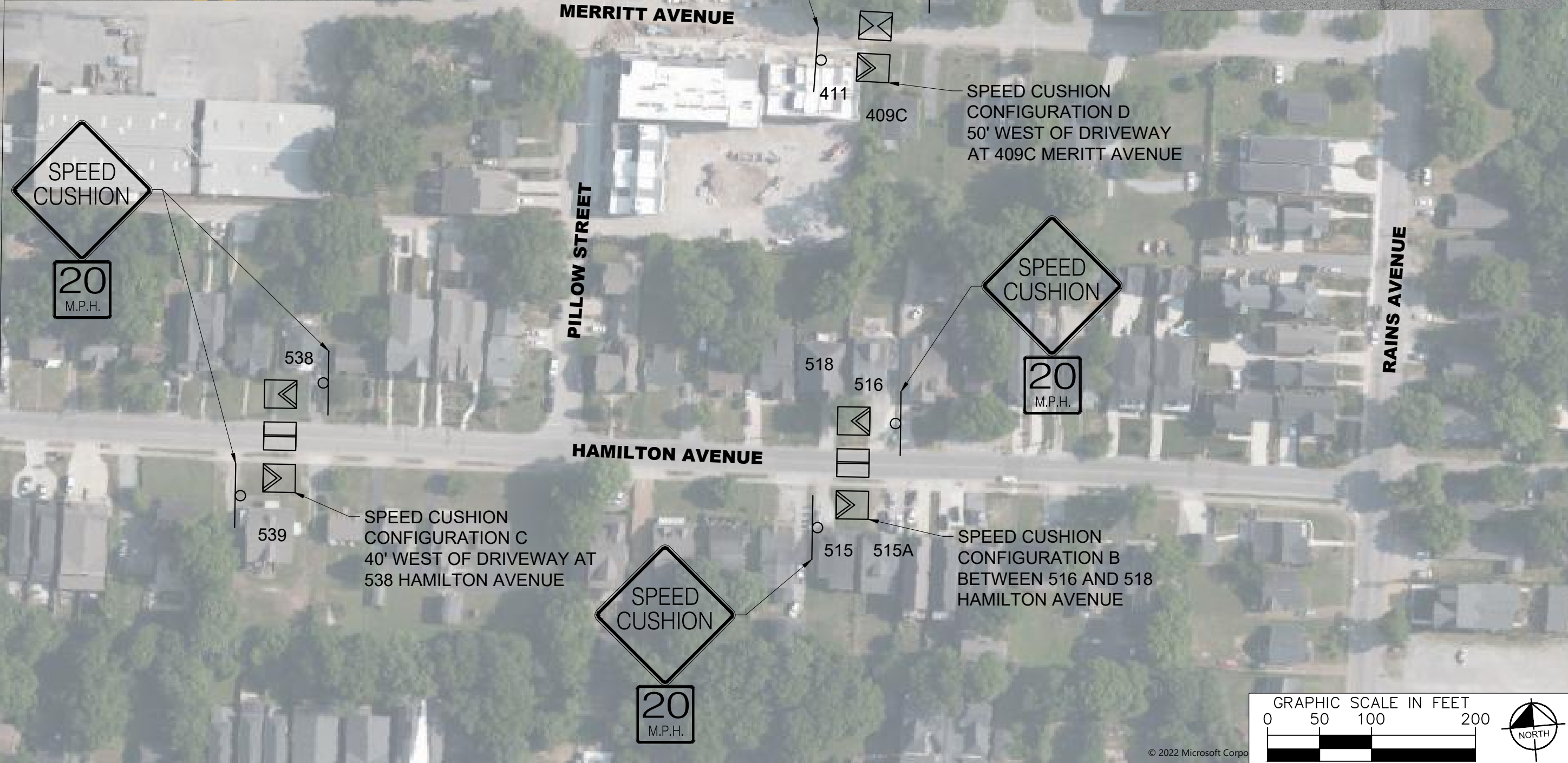
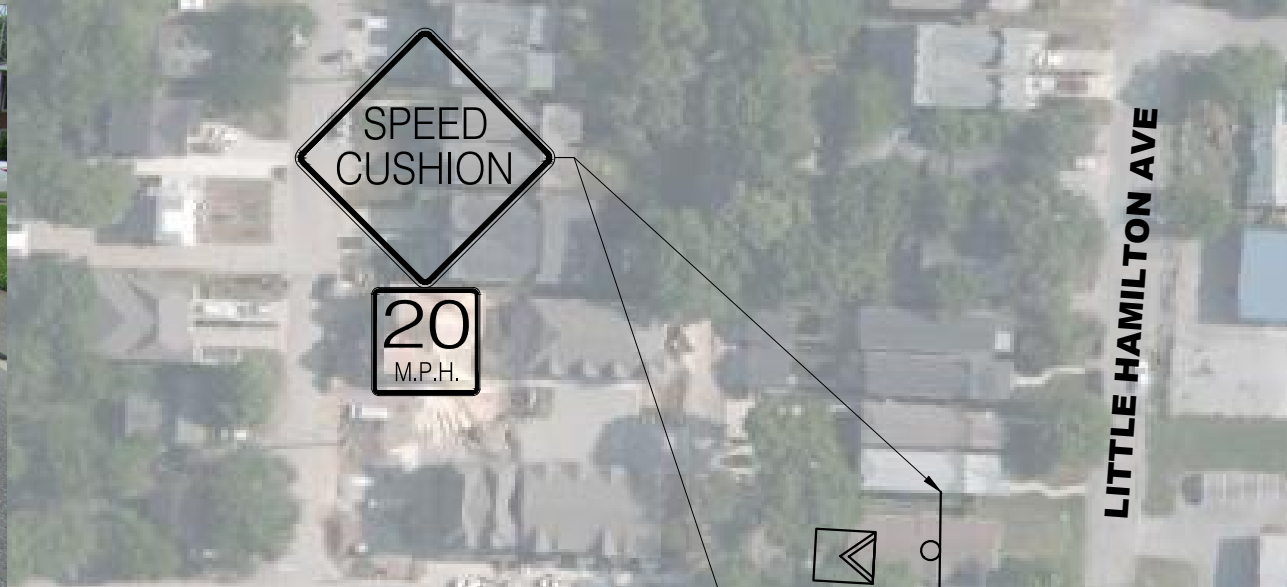
NO.	REVISIONS	DATE	BY
1			
2			
3			
4			
5			
6			
7			
8			
9			
10			

DESIGNED BY: BBW  
DRAWN BY: EMT  
CHECKED BY: NDOT  
DATE: 8/24/2022  
KIMLEY-HORN PROJECT NO. 11890005



CONCEPT PLAN  
SHEET NUMBER  
**06**





NO.	DATE	BY	REVISIONS
1			
2			
3			
4			
5			
6			
7			
8			
9			
10			

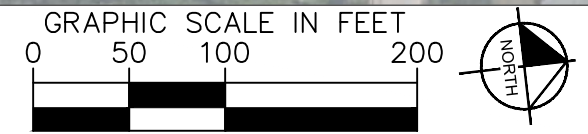
DESIGNED BY: BBM  
 DRAWN BY: EMT  
 CHECKED BY: NDOT  
 DATE: 8/24/2022  
 KIMLEY-HORN PROJECT NO. 11890005

This document, together with the concepts and designs presented herein, is intended only for the specific purpose and client for which it was prepared. Release of and improper reliance on the documents without written authorization and adaptation by Kimley-Horn and Associates, Inc. shall be without liability to Kimley-Horn and Associates, Inc.





This document, together with the concepts and designs presented herein, is intended only for the specific purpose and client for which it was prepared. Release of and improper reliance on this document without written authorization and adaptation by Kimley-Horn and Associates, Inc. shall be without liability to Kimley-Horn and Associates, Inc.



**SOUTH NASHVILLE  
ACTION PEOPLE (SNAP)  
TRAFFIC CALMING**  
NASHVILLE, TN

**DRAFT  
PRELIMINARY  
PLANS**  
FOR REVIEW ONLY

NO.	REVISIONS	DATE	BY
1			
2			
3			
4			
5			
6			
7			
8			
9			
10			

DESIGNED BY: EMT  
 DRAWN BY: EMT  
 CHECKED BY: NDOT  
 DATE: 8/24/2022  
 KIMLEY-HORN PROJECT NO. 11890005

CONCEPT PLAN  
 SHEET NUMBER  
**08**

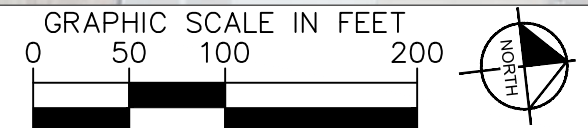




This document, together with the concepts and designs presented herein, is intended only for the specific purpose and client for which it was prepared. Release of and improper reliance on the documents without written authorization and adaptation by Kimley-Horn and Associates, Inc. shall be without liability to Kimley-Horn and Associates, Inc.



SPEED CUSHION CONFIGURATION H  
40' SOUTH OF INTERSECTION AT  
MARTIN STREET AND MOORE  
AVENUE



**SOUTH NASHVILLE  
ACTION PEOPLE (SNAP)  
TRAFFIC CALMING  
NASHVILLE, TN**

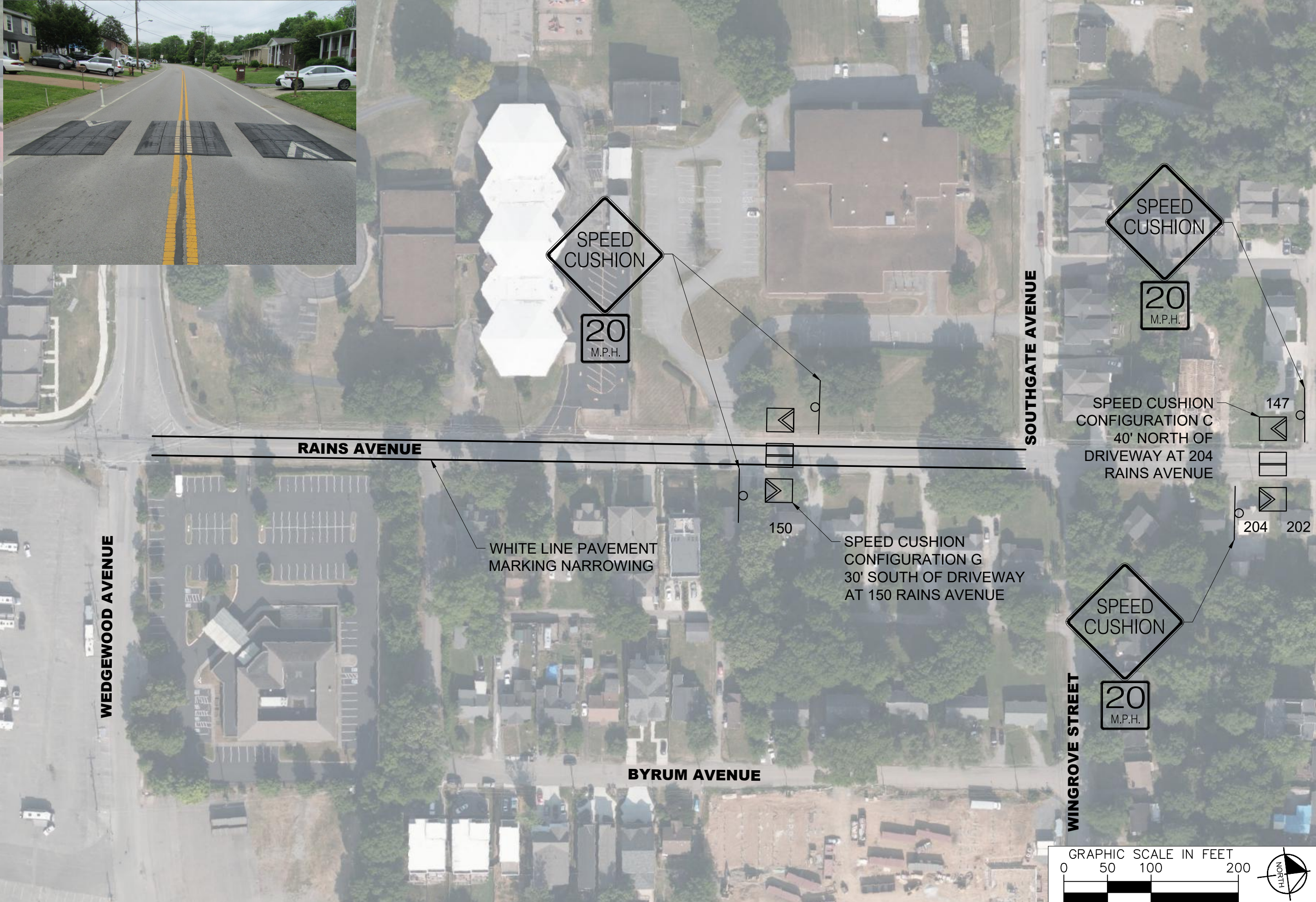
**DRAFT  
PRELIMINARY  
PLANS  
FOR REVIEW ONLY**

NO.	REVISIONS	DATE	BY
1			
2			
3			
4			
5			
6			
7			
8			
9			
10			

DESIGNED BY: EMT  
DRAWN BY: EMT  
CHECKED BY: NDOT  
DATE: 8/24/2022  
KIMLEY-HORN PROJECT NO. 11890005

CONCEPT PLAN  
SHEET NUMBER  
**09**

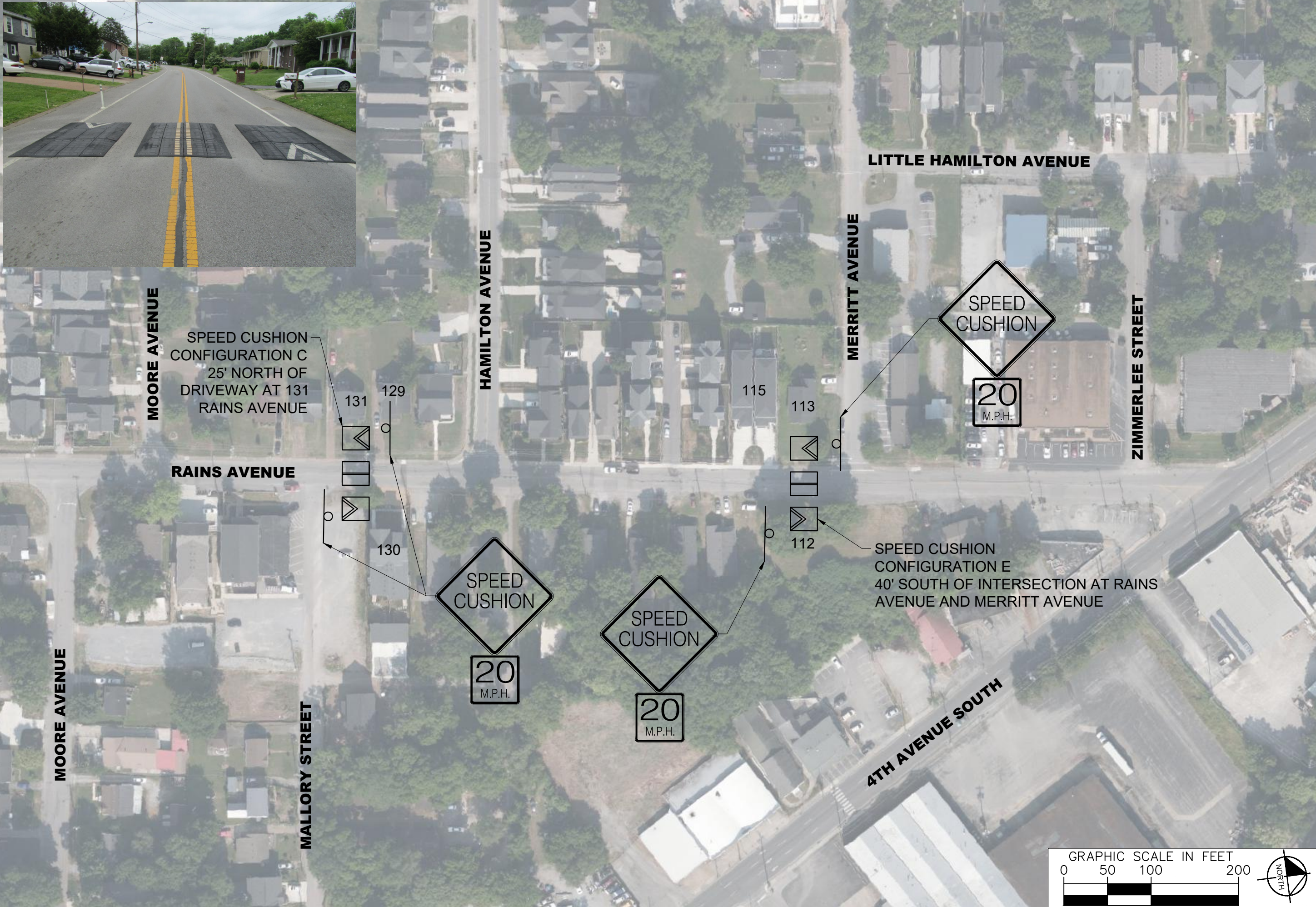




NO.	REVISIONS	DATE	BY
1			
2			
3			
4			
5			
6			
7			
8			
9			
10			

DESIGNED BY:	EBM
DRAWN BY:	EMT
CHECKED BY:	NDOT
DATE:	8/24/2022
KIMLEY-HORN PROJECT NO. 11890005	





**MOORE AVENUE**

SPEED CUSHION CONFIGURATION C  
25' NORTH OF DRIVEWAY AT 131 RAINS AVENUE

**RAINS AVENUE**

**HAMILTON AVENUE**

**LITTLE HAMILTON AVENUE**

**MERRITT AVENUE**

**ZIMMERLEE STREET**

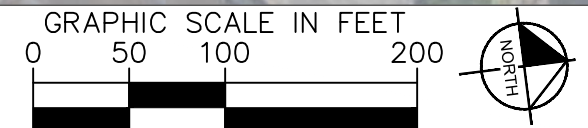
**MOORE AVENUE**

**MALLERY STREET**

**4TH AVENUE SOUTH**



SPEED CUSHION CONFIGURATION E  
40' SOUTH OF INTERSECTION AT RAINS AVENUE AND MERRITT AVENUE



**SOUTH NASHVILLE  
ACTION PEOPLE (SNAP)  
TRAFFIC CALMING  
NASHVILLE, TN**

**DRAFT  
PRELIMINARY  
PLANS  
FOR REVIEW ONLY**

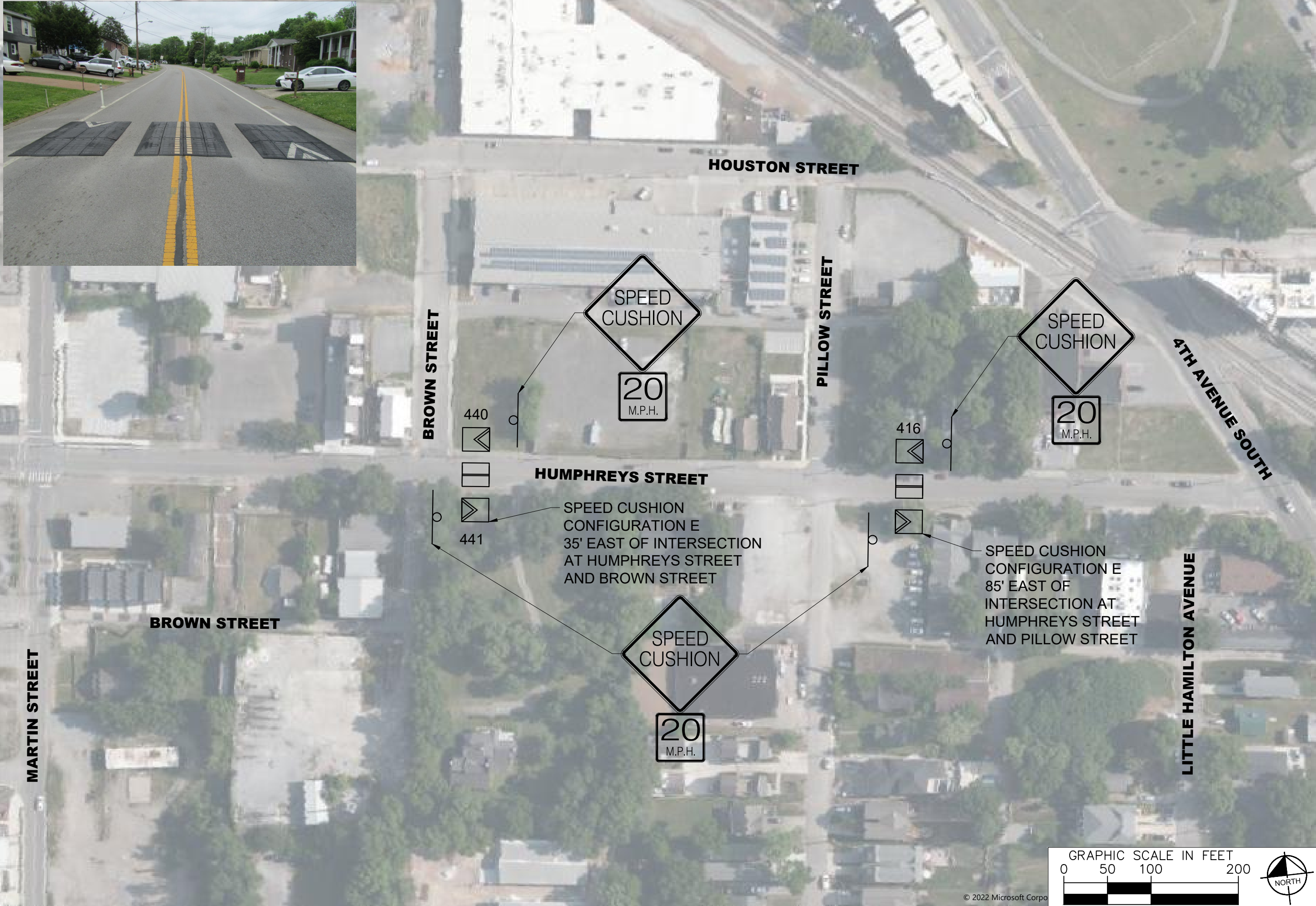
NO.	REVISIONS	DATE	BY
1			
2			
3			
4			
5			
6			
7			
8			
9			
10			

DESIGNED BY: EMT  
DRAWN BY: EMT  
CHECKED BY: NDOT  
DATE: 8/24/2022  
KIMLEY-HORN PROJECT NO. 11890005

CONCEPT PLAN  
SHEET NUMBER  
**11**

This document, together with the concepts and designs presented herein, is intended only for the specific purpose and client for which it was prepared. Reuse of and improper reliance on the document without written authorization and adaptation by Kimley-Horn and Associates, Inc. shall be without liability to Kimley-Horn and Associates, Inc.

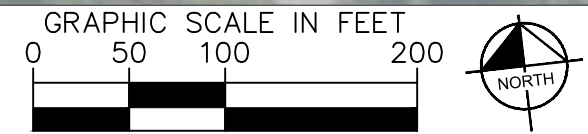




NO.	REVISIONS	DATE	BY
1			
2			
3			
4			
5			
6			
7			
8			
9			
10			

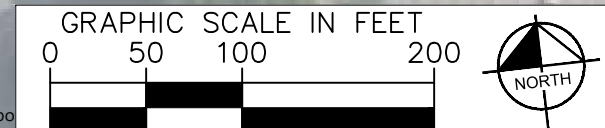
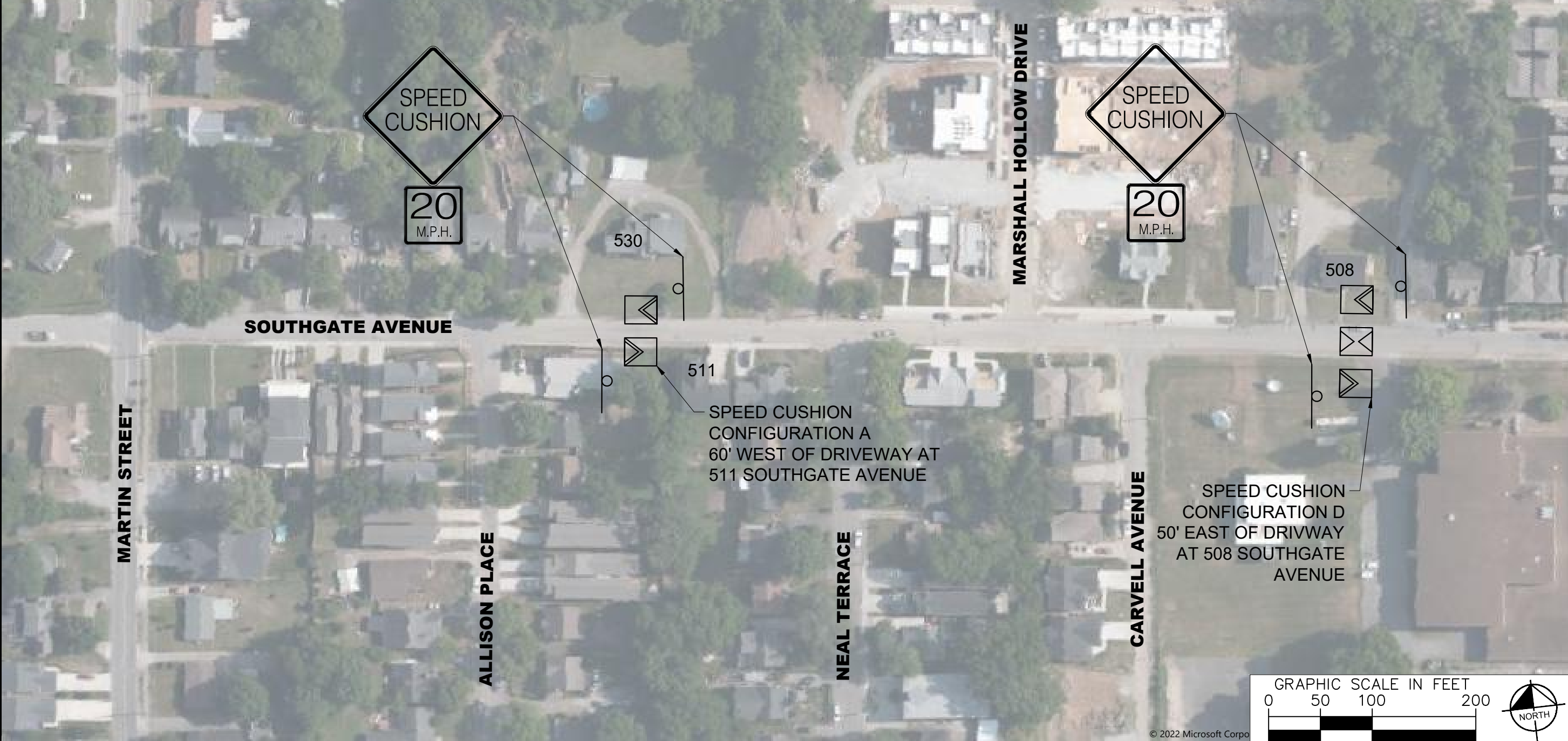
DESIGNED BY:	BBM
DRAWN BY:	EMT
CHECKED BY:	NDOT
DATE:	8/24/2022
KIMLEY-HORN PROJECT NO. 11890005	

CONCEPT PLAN
SHEET NUMBER
<b>12</b>





This document, together with the concepts and designs presented herein, is intended only for the specific purpose and client for which it was prepared. Release of and improper reliance on the document without written authorization and adaptation by Kimley-Horn and Associates, Inc. shall be without liability to Kimley-Horn and Associates, Inc.



**SOUTH NASHVILLE  
ACTION PEOPLE (SNAP)  
TRAFFIC CALMING**  
NASHVILLE, TN

**DRAFT  
PRELIMINARY  
PLANS**  
FOR REVIEW ONLY

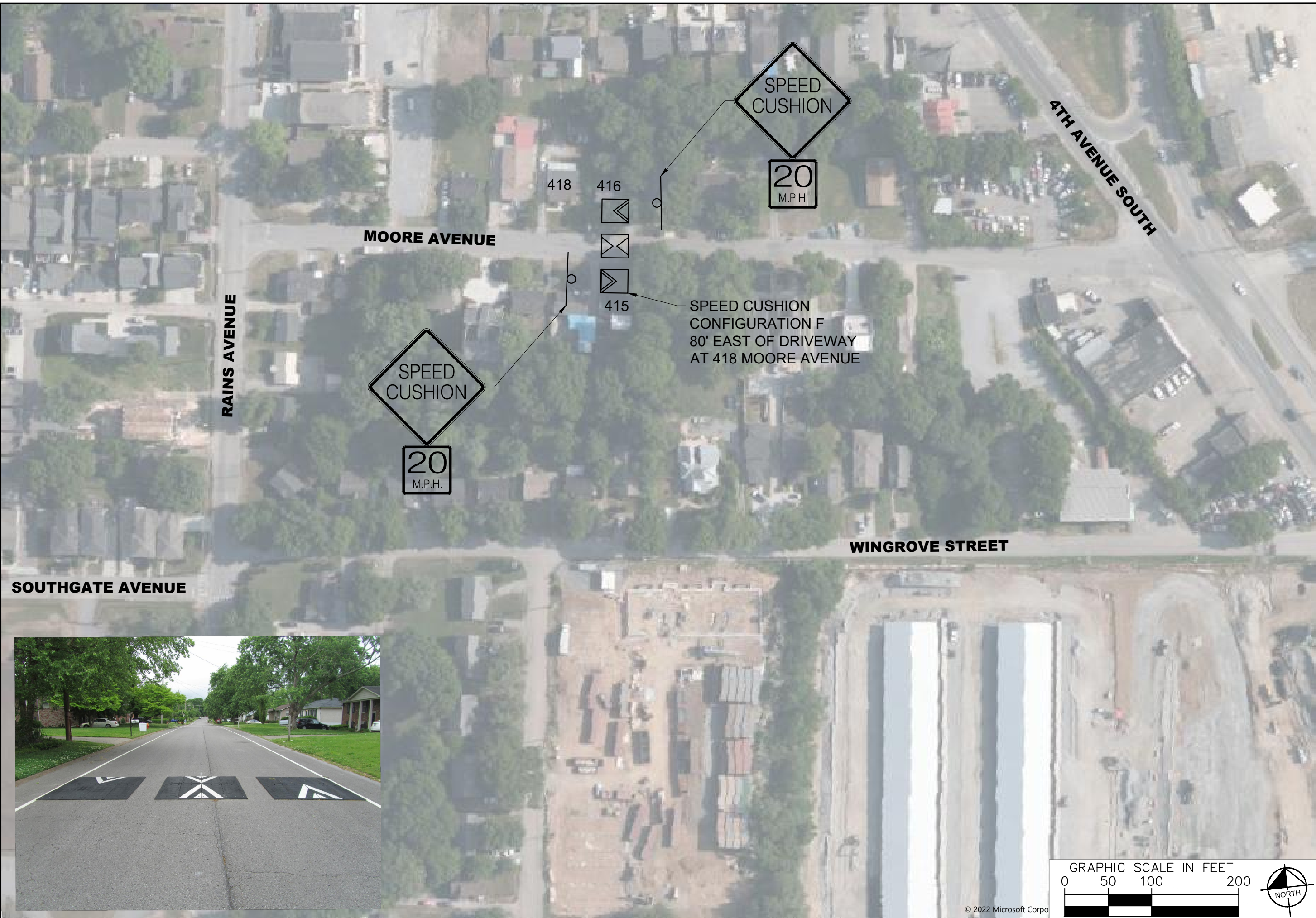
NO.	REVISIONS	DATE	BY
1			
2			
3			
4			
5			
6			
7			
8			
9			
10			

DESIGNED BY: RBW  
 DRAWN BY: EMT  
 CHECKED BY: NDOT  
 DATE: 8/24/2022  
 KIMLEY-HORN PROJECT NO. 11890005

CONCEPT PLAN  
SHEET NUMBER  
**13**

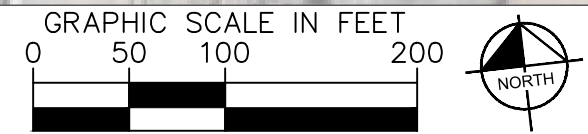


This document, together with the concepts and designs presented herein, is intended only for the specific purpose and client for which it was prepared. Release of and improper reliance on this document without written authorization and adaptation by Kimley-Horn and Associates, Inc. shall be without liability to Kimley-Horn and Associates, Inc.



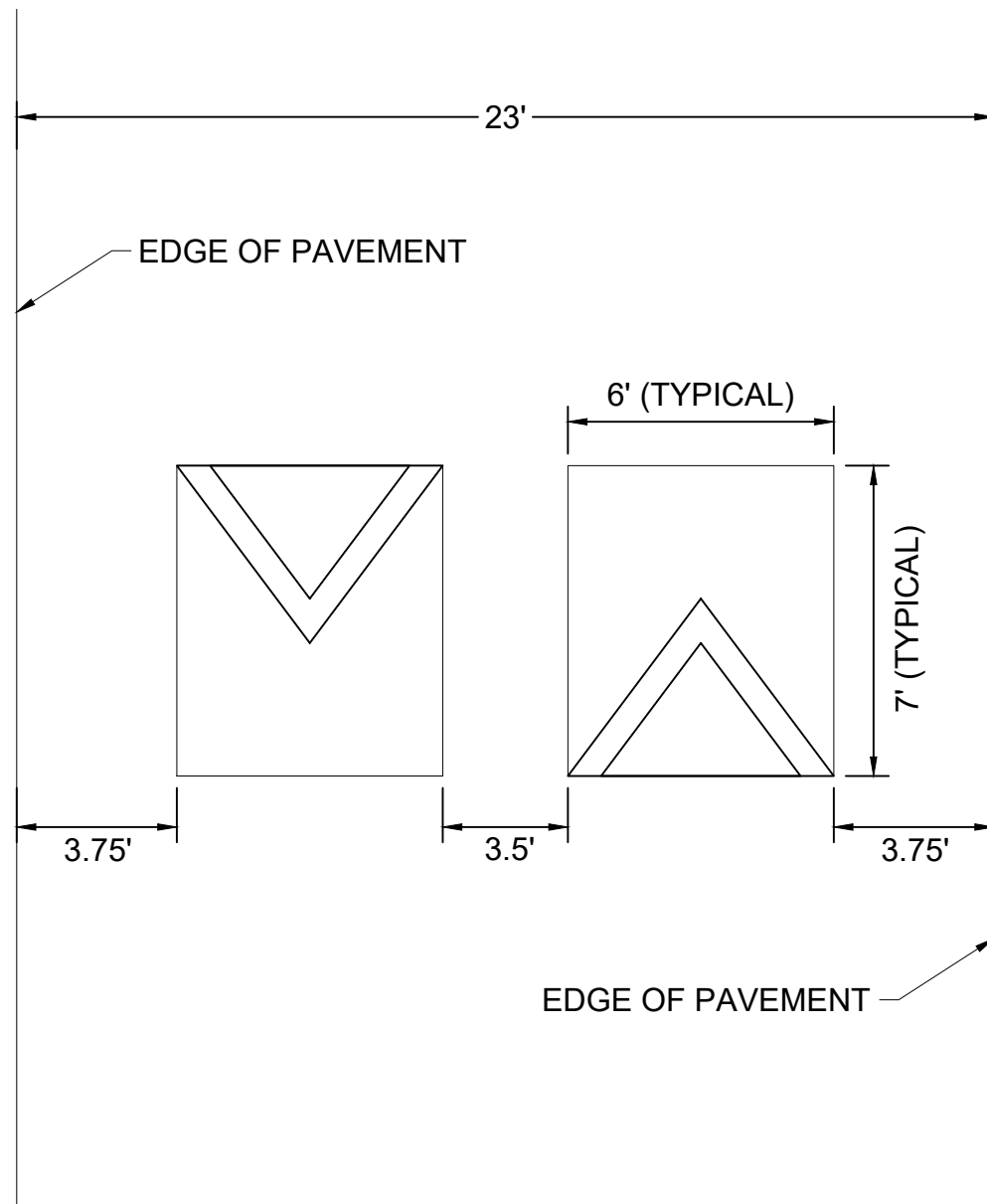
NO.	REVISIONS	DATE	BY
1			
2			
3			
4			
5			
6			
7			
8			
9			
10			

DESIGNED BY: EMT  
DRAWN BY: EMT  
CHECKED BY: NDOT  
DATE: 8/24/2022  
KIMLEY-HORN PROJECT NO. 11890005

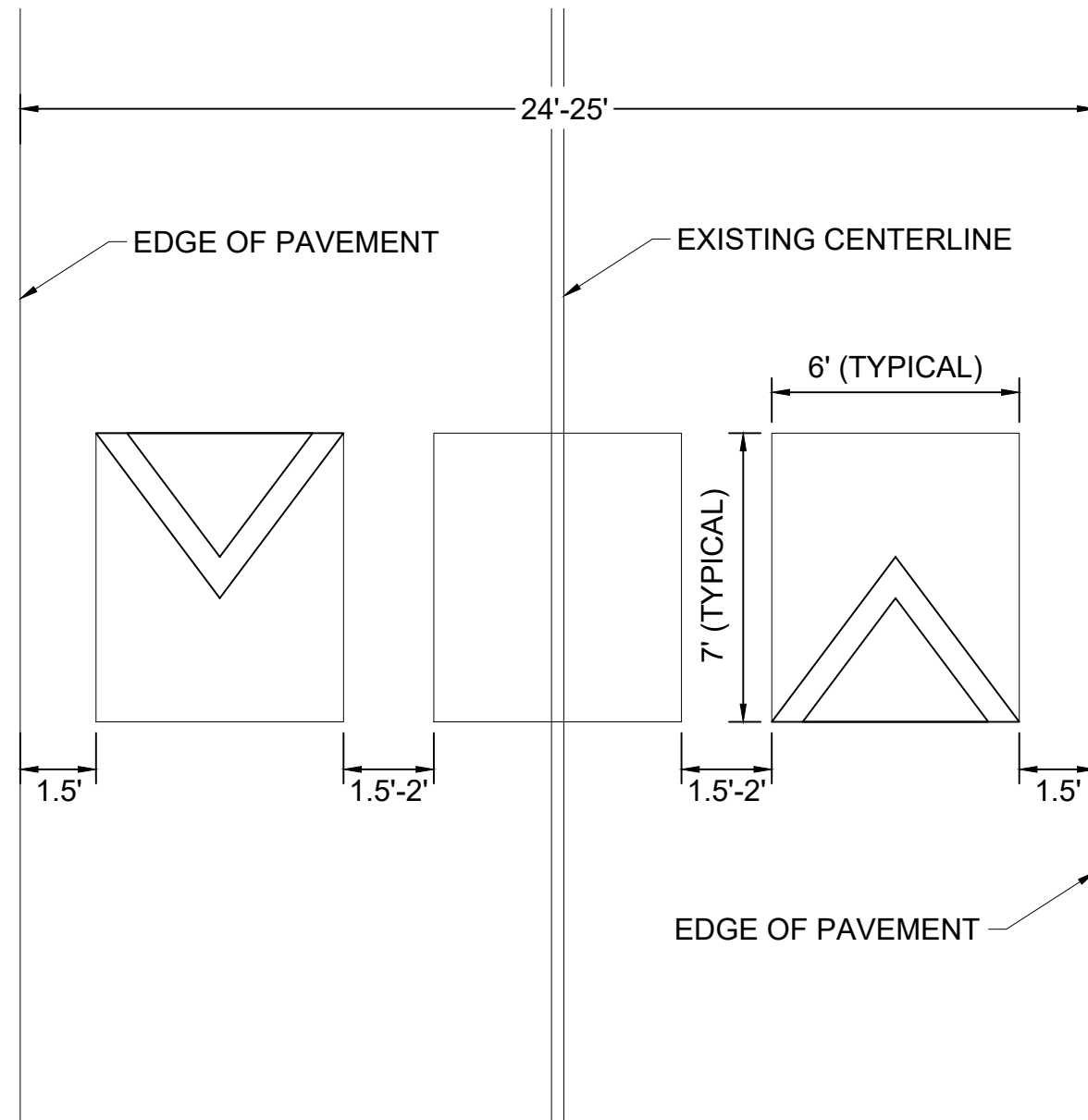




CONFIGURATION A



CONFIGURATION B

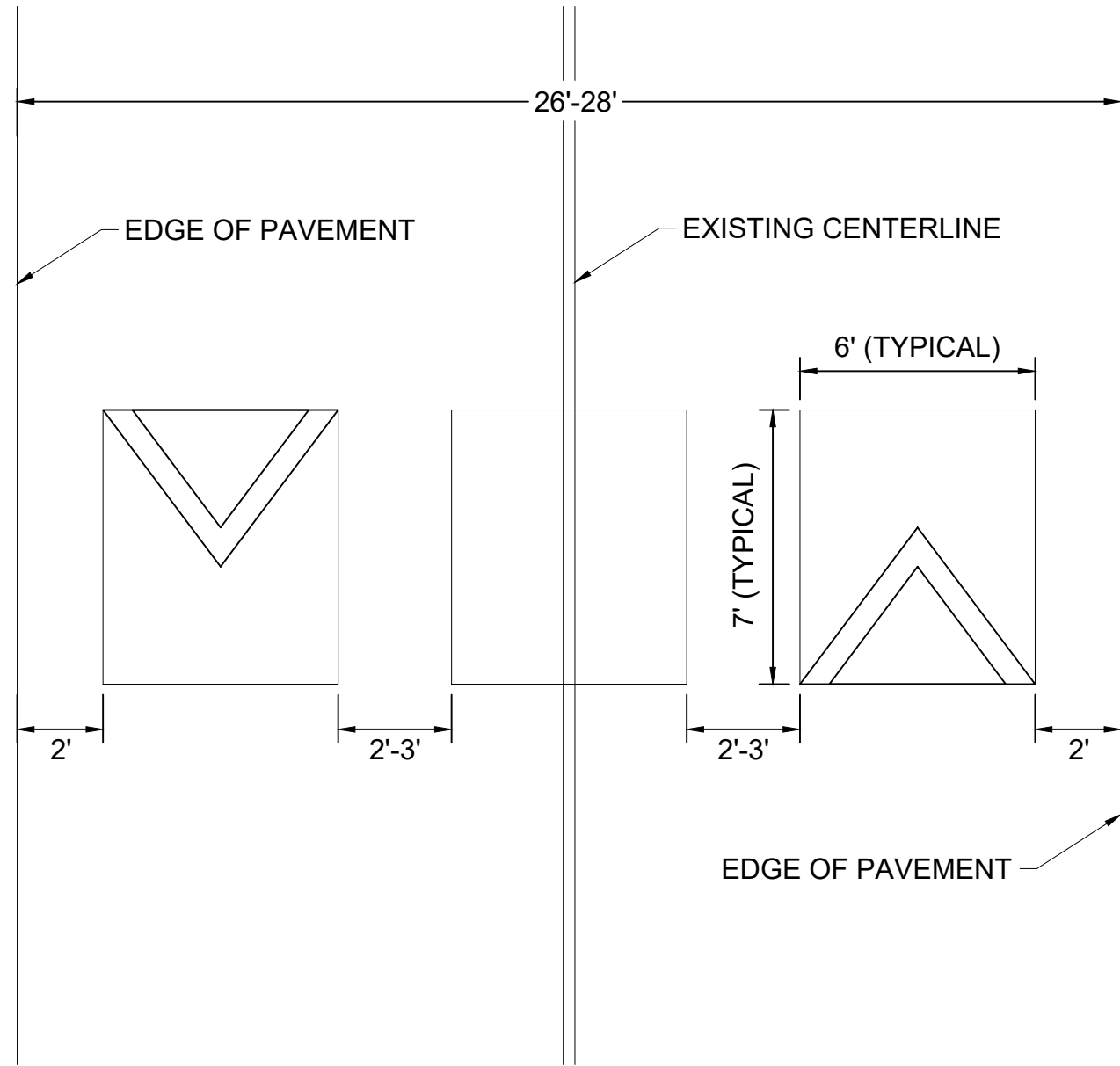


NO.	REVISIONS	DATE	BY
1			
2			
3			
4			
5			
6			
7			
8			
9			
10			

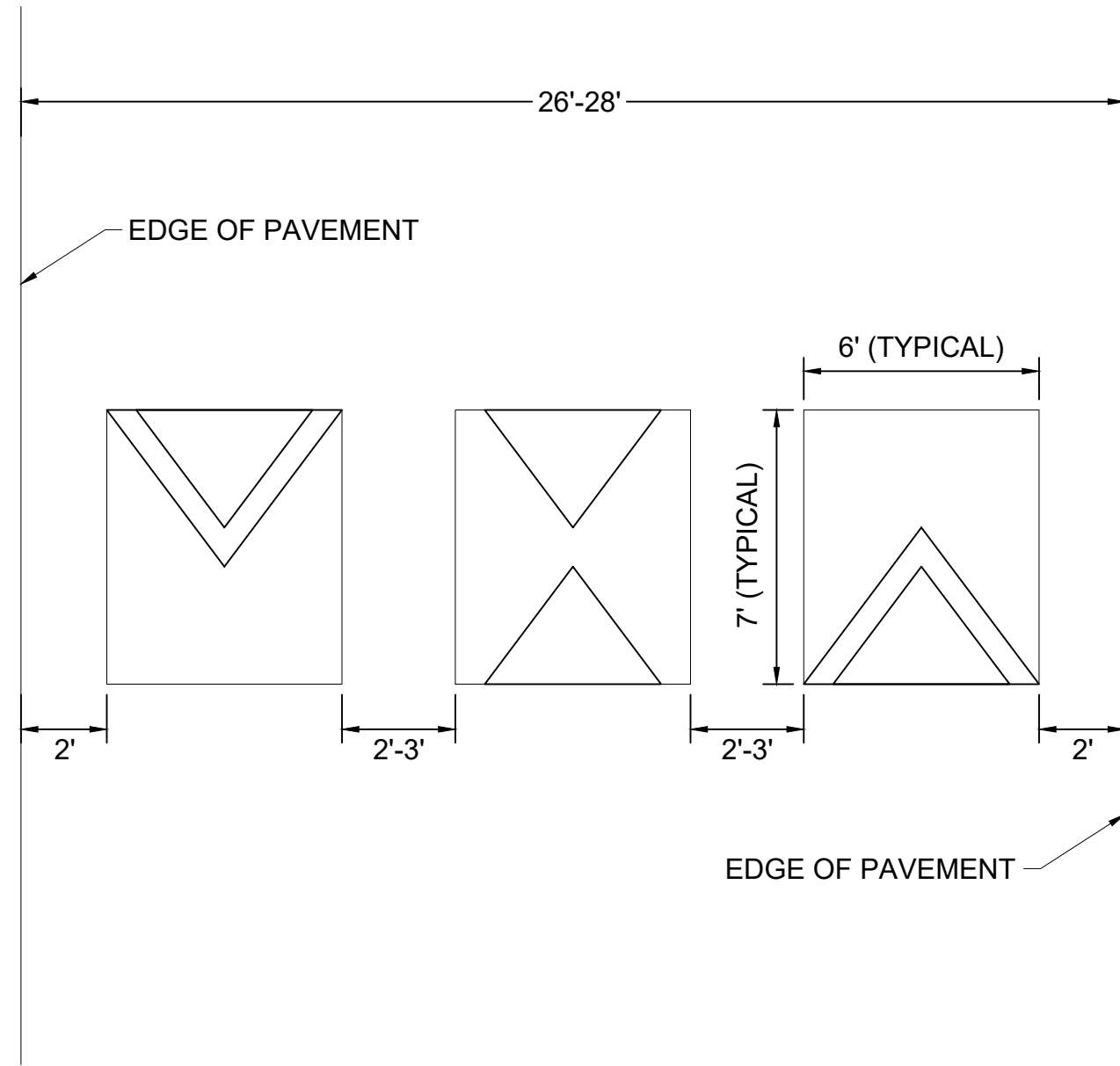
DESIGNED BY:	BBM
DRAWN BY:	EMT
CHECKED BY:	NDQT
DATE:	8/24/2022
KIMLEY-HORN PROJECT NO. 11890005	



CONFIGURATION C



CONFIGURATION D



NO.	REVISIONS	DATE	BY
1			
2			
3			
4			
5			
6			
7			
8			
9			
10			

DESIGNED BY: RBN  
DRAWN BY: EMT  
CHECKED BY: NDQT  
DATE: 8/24/2022  
KIMLEY-HORN PROJECT NO. 11890005

CONCEPT PLAN

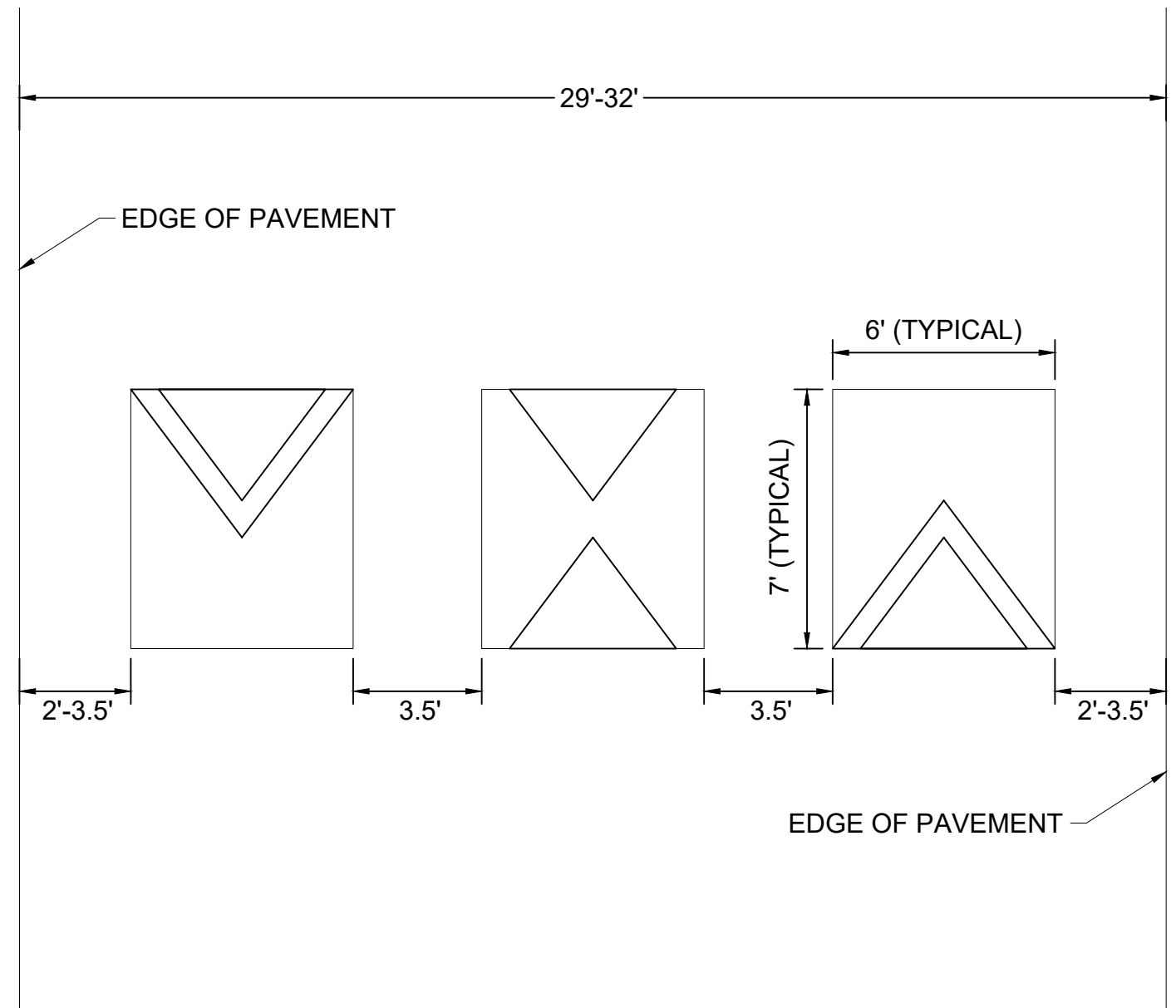
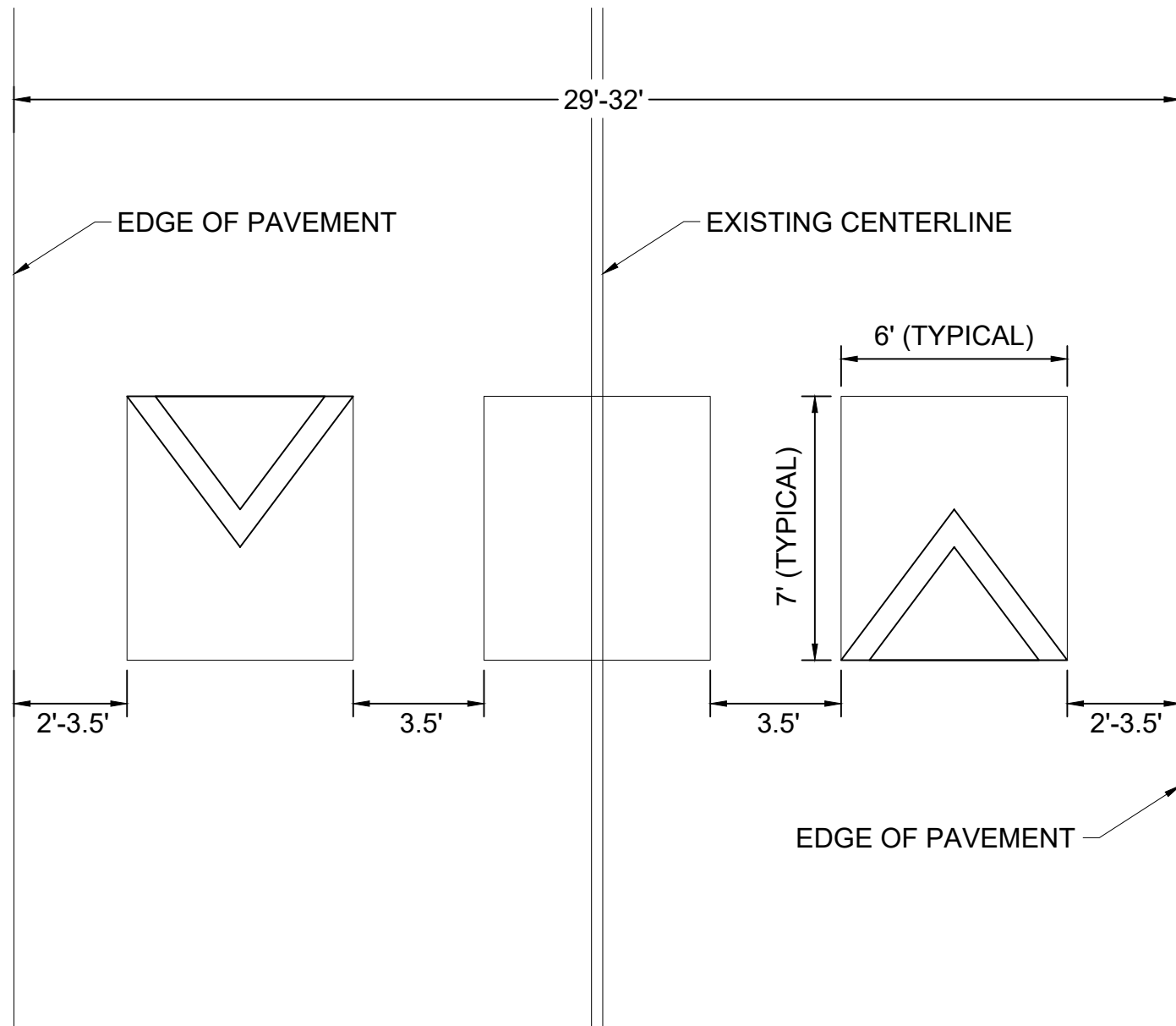
SHEET NUMBER  
**16**

This document, together with the concepts and designs presented herein, is intended only for the specific purpose and client for which it was prepared. Reuse of and improper reliance on the documents without written authorization and adaptation by Kimley-Horn and Associates, Inc. shall be without liability to Kimley-Horn and Associates, Inc.



CONFIGURATION E

CONFIGURATION F



NO.	REVISIONS	DATE	BY
1			
2			
3			
4			
5			
6			
7			
8			
9			
10			

DESIGNED BY: RBN  
DRAWN BY: EMT  
CHECKED BY: NDQT  
DATE: 8/24/2022  
KIMLEY-HORN PROJECT NO. 11890005

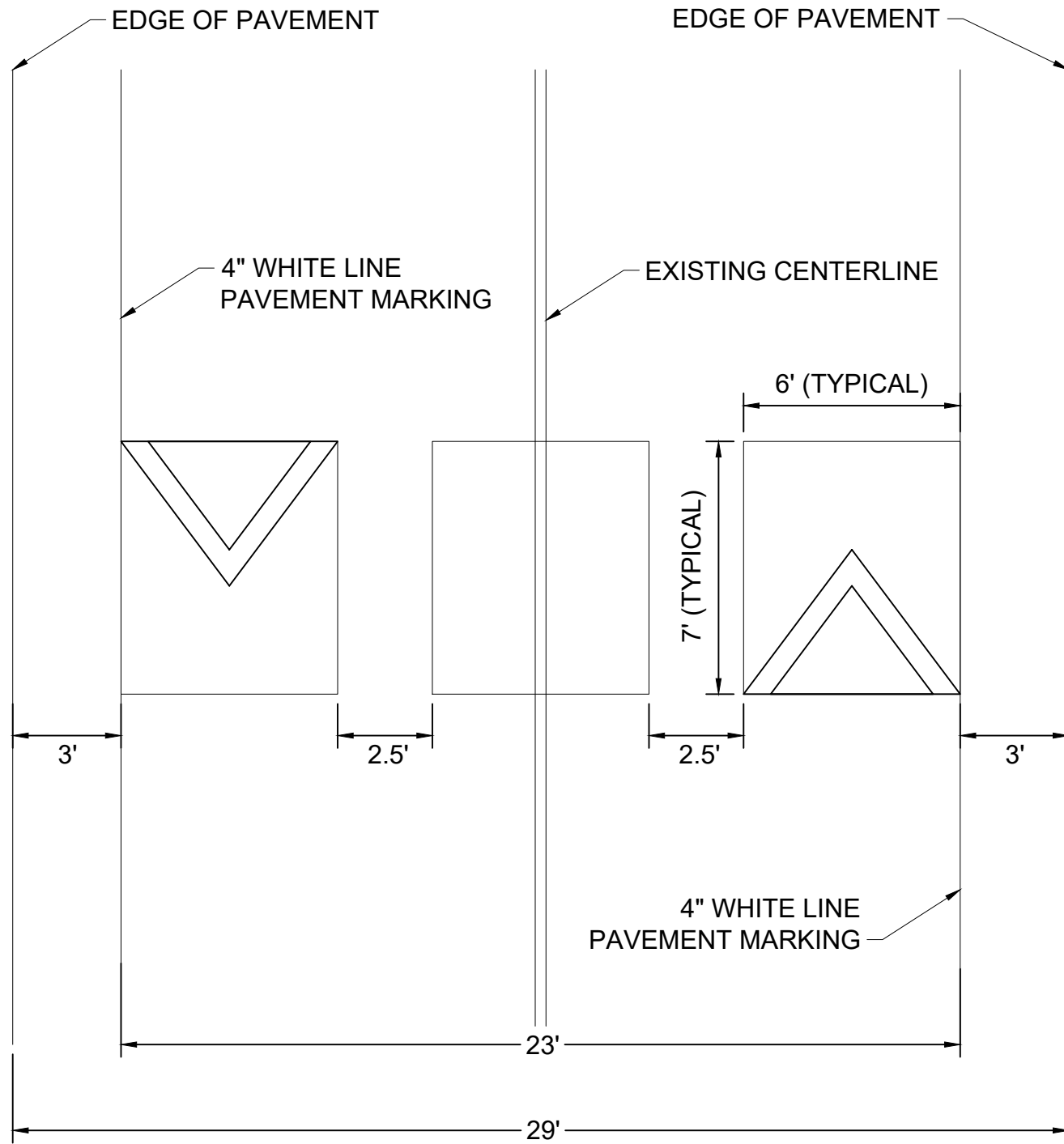
CONCEPT PLAN

SHEET NUMBER  
**17**

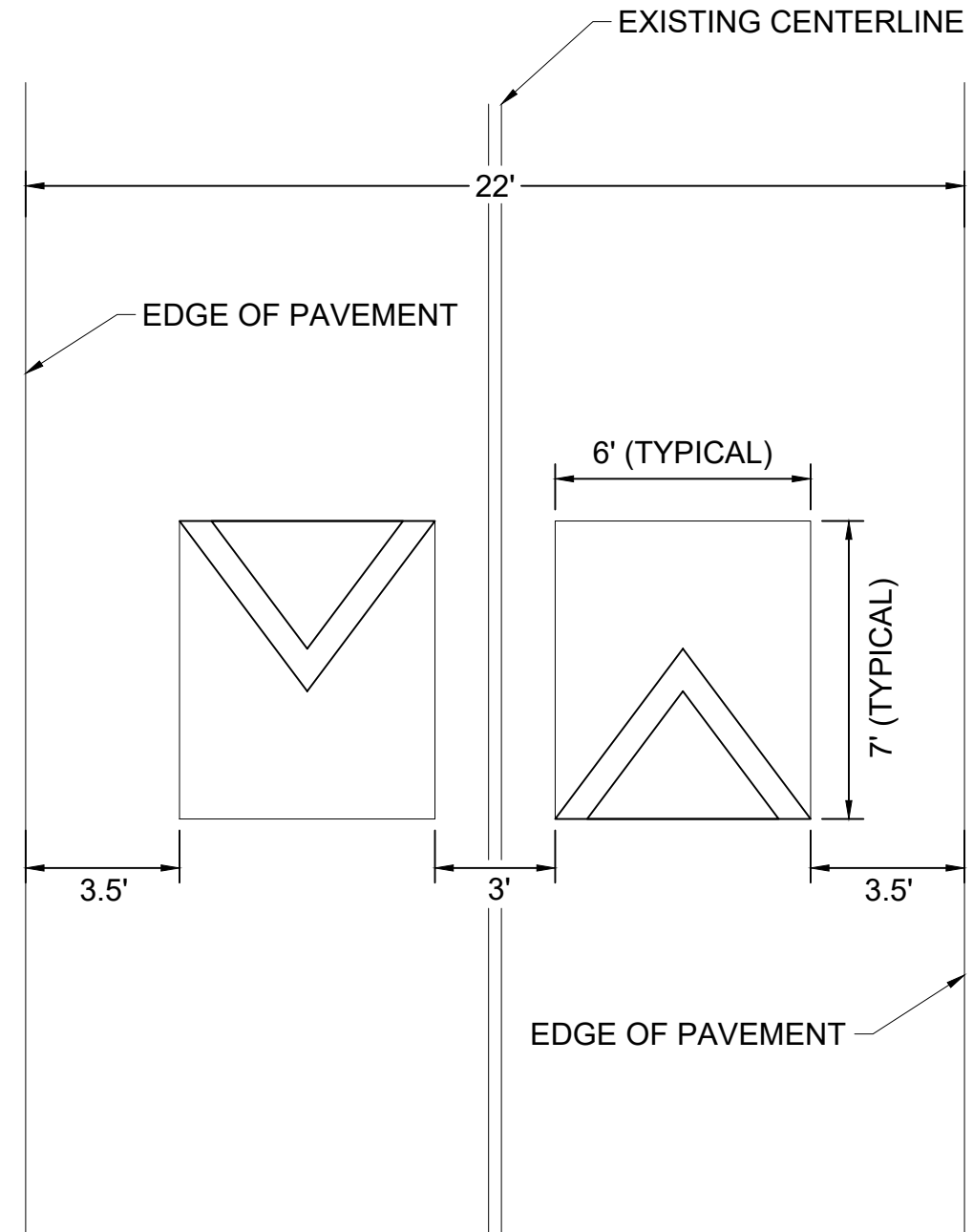
This document, together with the concepts and designs presented herein, is intended only for the specific purpose and client for which it was prepared. Reuse of and improper reliance on the documents without written authorization and adaptation by Kimley-Horn and Associates, Inc. shall be without liability to Kimley-Horn and Associates, Inc.



CONFIGURATION G



CONFIGURATION H



NO.	DATE	BY
1		
2		
3		
4		
5		
6		
7		
8		
9		
10		

DESIGNED BY: **BBM**  
DRAWN BY: **EMT**  
CHECKED BY: **NDQT**  
DATE: **8/24/2022**  
KIMLEY-HORN PROJECT NO. **11890005**

CONCEPT PLAN

SHEET NUMBER  
**18**