



This document, together with the concepts and designs presented herein, is intended only for the specific purpose and client for which it was prepared. Release of and improper reliance on this document without written authorization and adaptation by Kimley-Horn and Associates, Inc. shall be without liability to Kimley-Horn and Associates, Inc.

ESTIMATED QUANTITIES	
SPEED CUSHIONS	
6' X 10.5' SPEED CUSHION WITH ONE ARROW	14
SIGNS	
W17-1 (VAR.) "SPEED CUSHION" SIGN (30" X 30")	6
W17-1 (VAR.) "SPEED CUSHIONS AHEAD" SIGN (30" X 30")	4
W13-1P "20 M.P.H" SIGN (18" X 18")	10
RADAR SPEED FEEDBACK SIGN	1

LEGEND

 **SPEED CUSHION**

 **RADAR SPEED FEEDBACK SIGN**

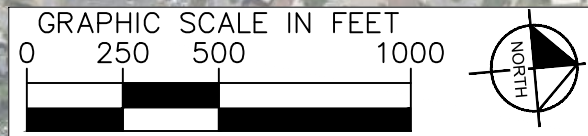
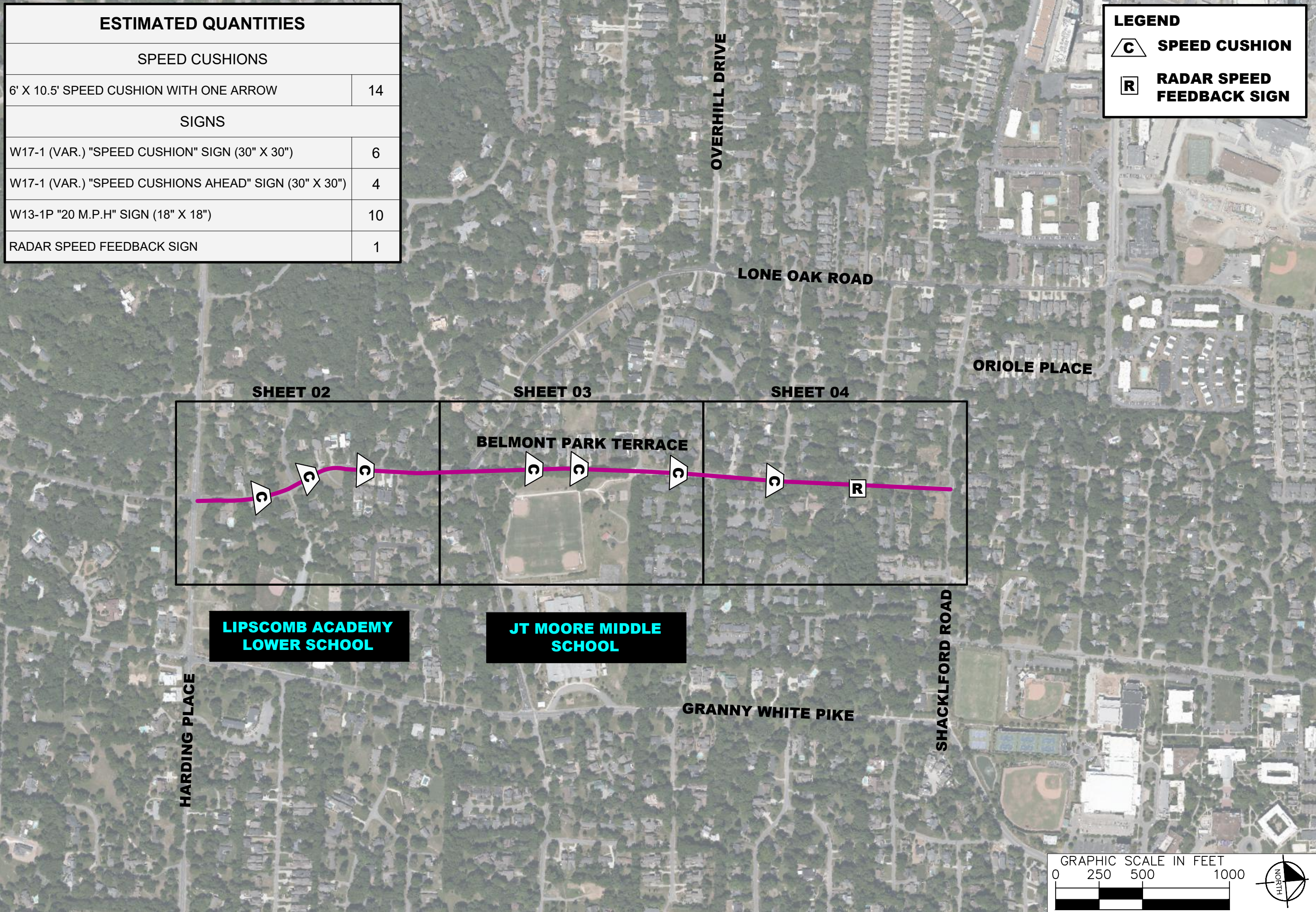


BELMONT PARK TERRACE
TRAFFIC CALMING
NASHVILLE, TN

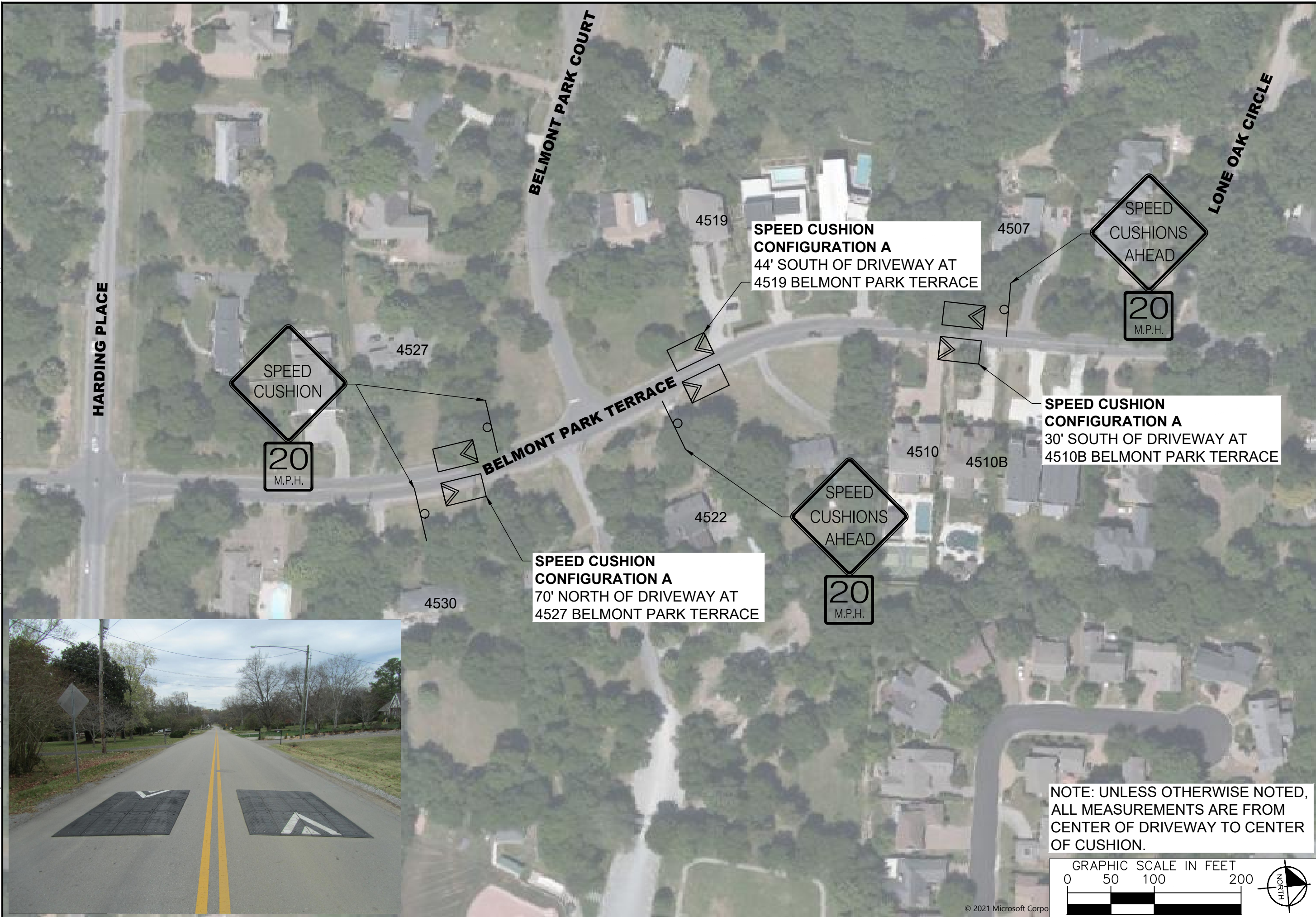


DESIGNED BY:	ALB
DRAWN BY:	EJW
CHECKED BY:	NDOT
DATE:	11/18/22
KIMLEY-HORN PROJECT NO.:	11890005

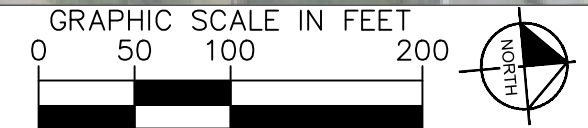
KEY
SHEET NUMBER
01



This document, together with the concepts and designs presented herein, is intended only for the specific purpose and client for which it was prepared. Release of and improper reliance on this document without written authorization and adaptation by Kimley-Horn and Associates, Inc. shall be without liability to Kimley-Horn and Associates, Inc.



NOTE: UNLESS OTHERWISE NOTED, ALL MEASUREMENTS ARE FROM CENTER OF DRIVEWAY TO CENTER OF CUSHION.



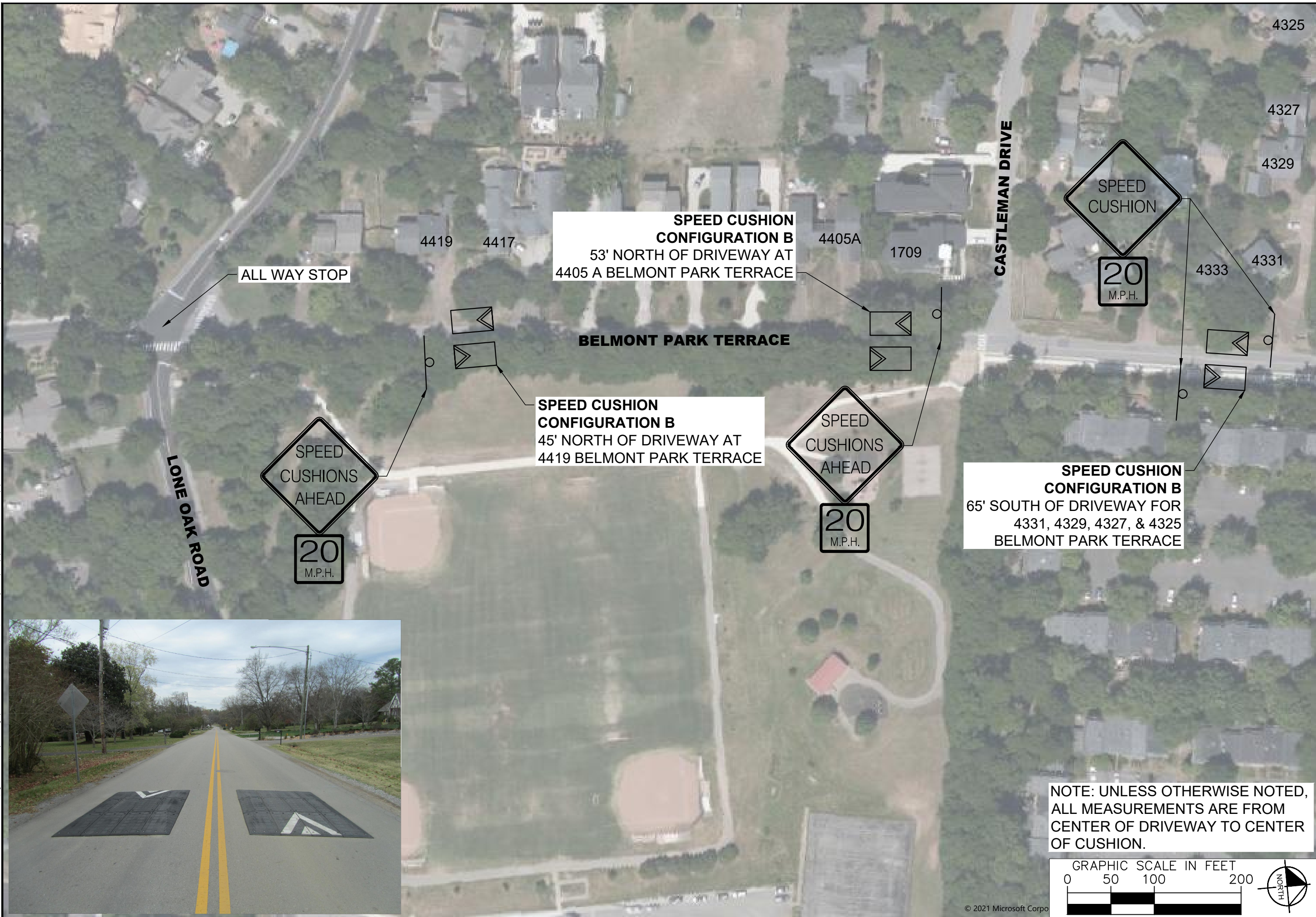
BELMONT PARK TERRACE
TRAFFIC CALMING
NASHVILLE, TN



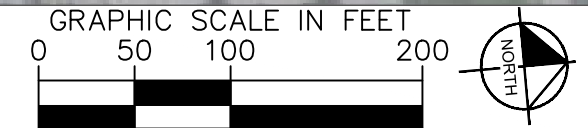
DESIGNED BY:	ALB
DRAWN BY:	EJW
CHECKED BY:	NDOT
DATE:	11/18/22
KIMLEY-HORN PROJECT NO.:	11890005

CONCEPT PLAN
SHEET NUMBER
02

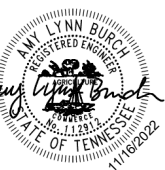
This document, together with the concepts and designs presented herein, is intended only for the specific purpose and client for which it was prepared. Reuse of and improper reliance on the document without written authorization and adaptation by Kimley-Horn and Associates, Inc. shall be without liability to Kimley-Horn and Associates, Inc.



NOTE: UNLESS OTHERWISE NOTED, ALL MEASUREMENTS ARE FROM CENTER OF DRIVEWAY TO CENTER OF CUSHION.



BELMONT PARK TERRACE
TRAFFIC CALMING
NASHVILLE, TN



DESIGNED BY:	ALB
DRAWN BY:	EJW
CHECKED BY:	NDOT
DATE:	11/18/22
KIMLEY-HORN PROJECT NO.:	11890005

CONCEPT PLAN
SHEET NUMBER
03

This document, together with the concepts and designs presented herein, is intended only for the specific purpose and client for which it was prepared. Reuse of and improper reliance on this document without written authorization and adaptation by Kimley-Horn and Associates, Inc. shall be without liability to Kimley-Horn and Associates, Inc.



NOTE: UNLESS OTHERWISE NOTED, ALL MEASUREMENTS ARE FROM CENTER OF DRIVEWAY TO CENTER OF CUSHION.

NDOT

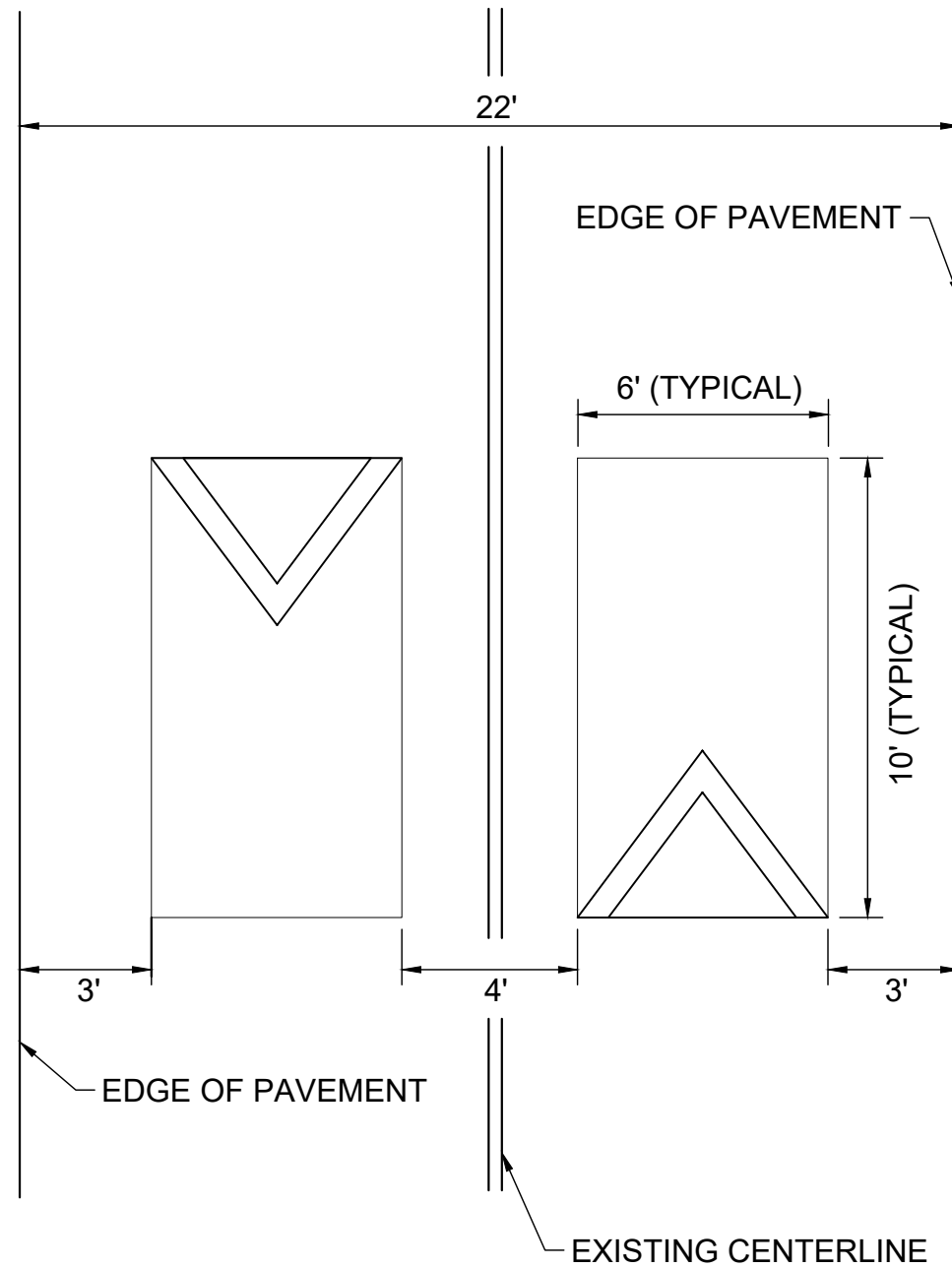
**BELMONT PARK TERRACE
TRAFFIC CALMING**
NASHVILLE, TN



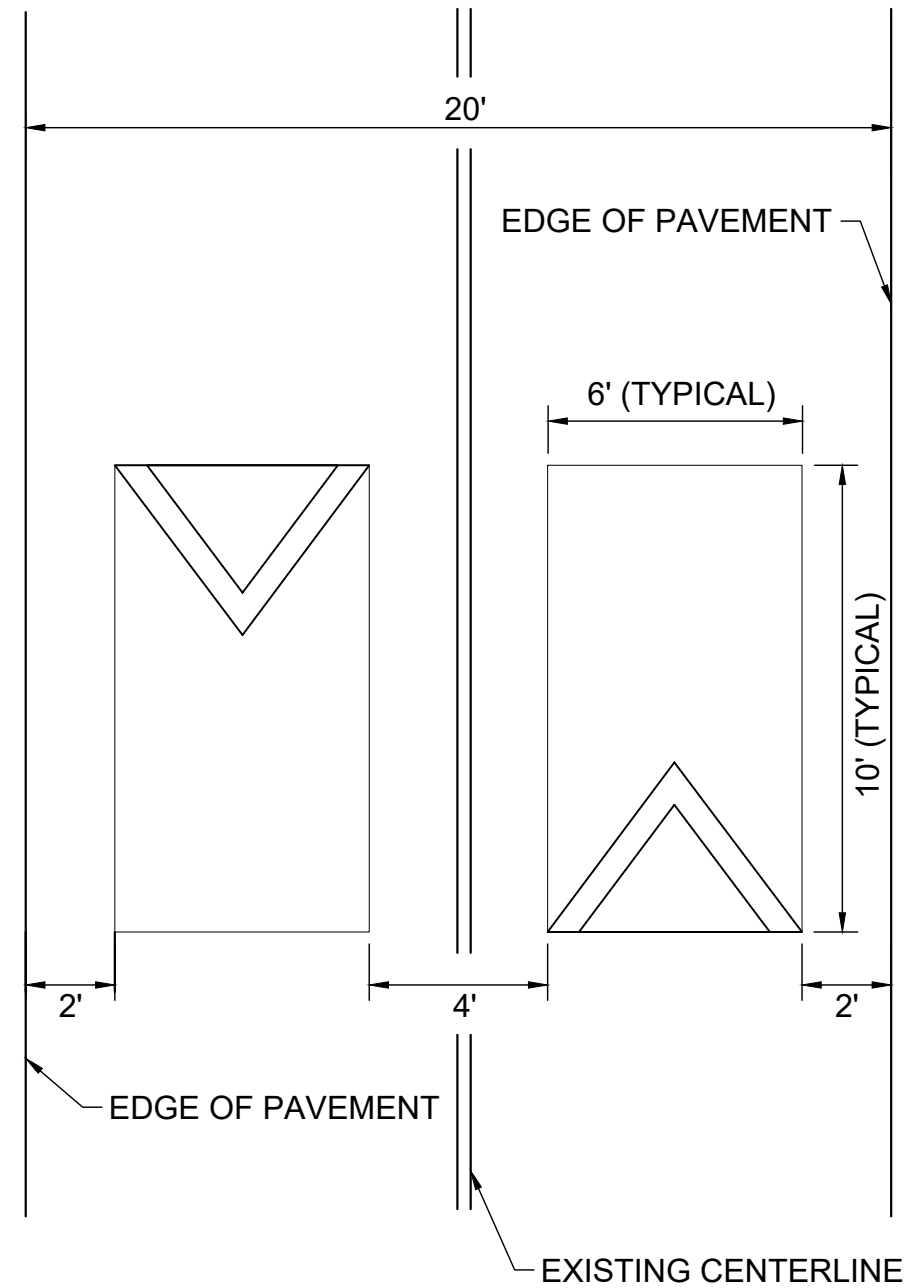
DESIGNED BY: ALB
DRAWN BY: EJV
CHECKED BY: NDOT
DATE: 11/18/22
KIMLEY-HORN PROJECT NO. 11890005

CONCEPT PLAN
SHEET NUMBER
04

SPEED CUSHION: CONFIGURATION A



SPEED CUSHION: CONFIGURATION B



This document, together with the concepts and designs presented herein, is intended only for the specific purpose and client for which it was prepared. Reuse of and improper reliance on the documents without written authorization and adaptation by Kimley-Horn and Associates, Inc. shall be without liability to Kimley-Horn and Associates, Inc.



DESIGNED BY:	ALB
DRAWN BY:	EJW
CHECKED BY:	NDOT
DATE:	11/18/22
KIMLEY-HORN PROJECT NO. 118900005	

DETAIL

SHEET NUMBER
05