




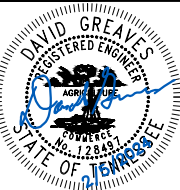
ESTIMATED QUANTITIES

| SPEED CUSHIONS | |
|--|-----|
| 6' X 7' SPEED CUSHION WITH ONE ARROW | 20 |
| SIGNING | |
| W17-1 (VAR.) "SPEED CUSHION" SIGN (30" X 30") | 10 |
| W17-1 (VAR.) "SPEED CUSHIONS AHEAD" SIGN (30" X 30") | 0 |
| W13-1P "20 M.P.H" SIGN (18" X 18") | 10 |
| PAVEMENT MARKINGS AND DELINEATORS | |
| 4" WHITE FLEXIBLE DELINEATOR | 130 |
| 4" SOLID WHITE LINE (LF) | 255 |
| 4" DOUBLE SOLID WHITE LINE (LF) | 855 |
| 6" SOLID WHITE LINE (LF) | 460 |
| 24" WHITE STOP LINE (LF) | 50 |
| 24" CROSSWALK STRIPE (LF) | 250 |
| BIKE CORRAL | 3 |
| SCOOTER CORRAL | 3 |

NOTE: ALL LOCATIONS ARE REFERENCED FROM CENTERLINE OF DRIVEWAYS OR OTHER LANDMARKS TO THE CENTER OF SPEED CUSHIONS OR SIGNS.

LEGEND

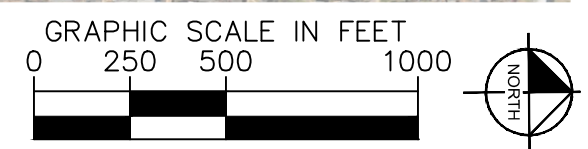
-  LIMITS OF TRAFFIC CALMING PROJECT
-  SPEED CUSHIONS
-  BULB-OUTS



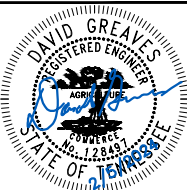
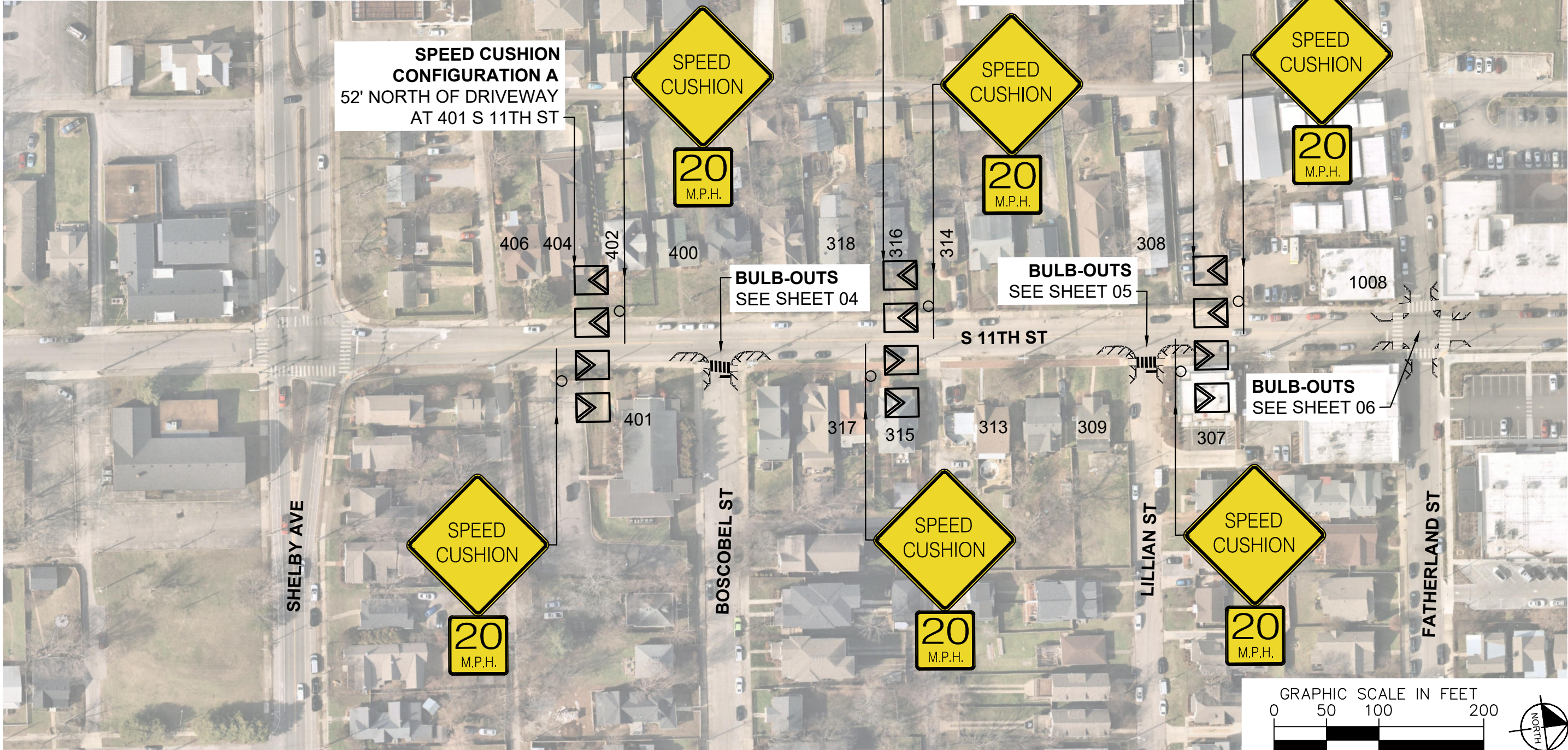
| | |
|--------------------------|-----------|
| DESIGNED BY: | DJG |
| DRAWN BY: | DJG |
| CHECKED BY: | NDOT |
| DATE: | 2/9/2024 |
| KIMLEY-HORN PROJECT NO.: | 118900046 |

KEY

SHEET NUMBER
01

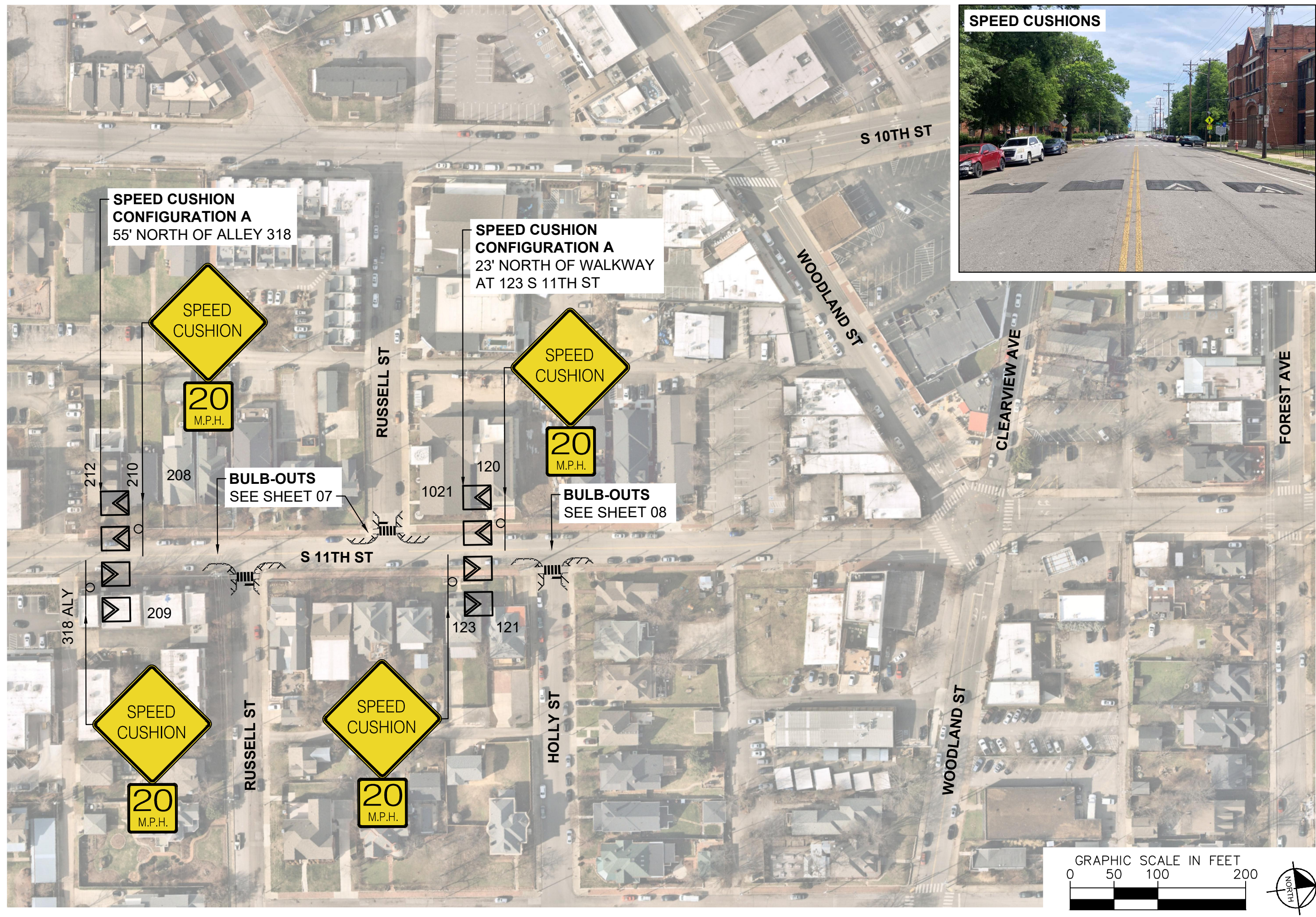


SPEED CUSHIONS



| | |
|-----------------------------------|----------|
| DESIGNED BY: | DJG |
| DRAWN BY: | DJG |
| CHECKED BY: | NDOT |
| DATE: | 2/9/2024 |
| KIMLEY-HORN PROJECT NO. 118900046 | |

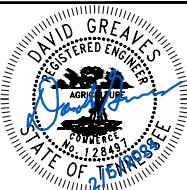
This document, together with the concepts and designs presented herein, is intended only for the specific purpose and client for which it was prepared. Reuse of and improper reliance on this document without written authorization and adaptation by Kimley-Horn and Associates, Inc. shall be without liability to Kimley-Horn and Associates, Inc.



SPEED CUSHIONS

NDOT

S 11TH STREET
TRAFFIC CALMING
NASHVILLE, TN



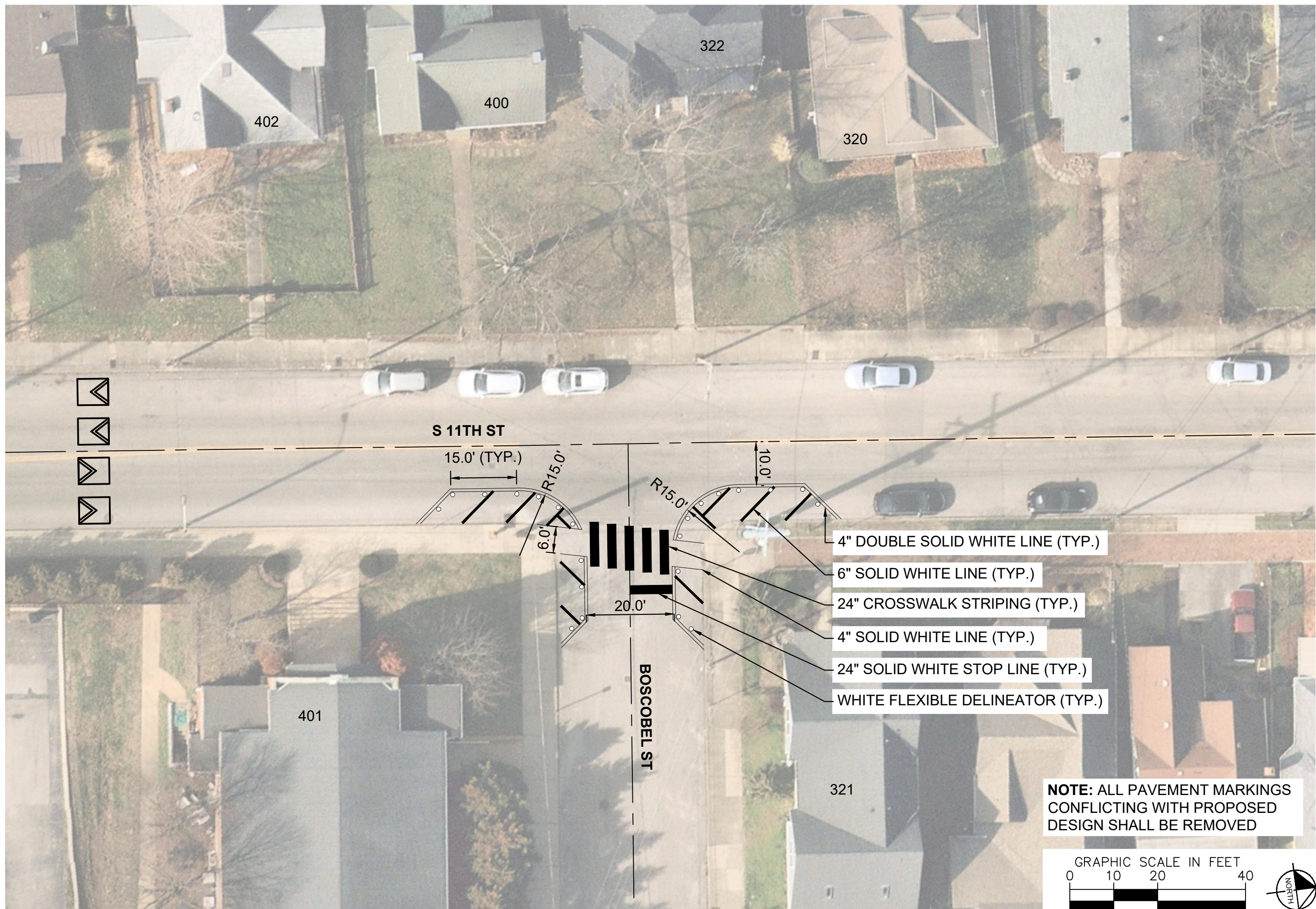
Kimley-Horn

| | |
|--------------------------|-----------|
| DESIGNED BY: | DJG |
| DRAWN BY: | DJG |
| CHECKED BY: | NDOT |
| DATE: | 2/9/2024 |
| KIMLEY-HORN PROJECT NO.: | 118800046 |

CONCEPT

SHEET NUMBER
03

This document, together with the concepts and designs presented herein, is intended only for the specific purpose and client for which it was prepared. Reuse of and improper reliance on this document without written authorization and adaptation by Kimley-Horn and Associates, Inc. shall be without liability to Kimley-Horn and Associates, Inc.

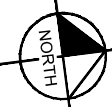
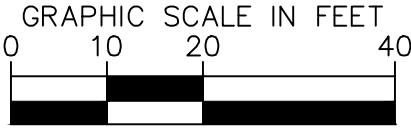


S 11TH ST

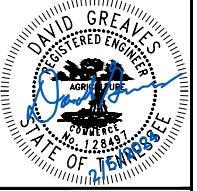
BOSCOBEL ST

- 4" DOUBLE SOLID WHITE LINE (TYP.)
- 6" SOLID WHITE LINE (TYP.)
- 24" CROSSWALK STRIPING (TYP.)
- 4" SOLID WHITE LINE (TYP.)
- 24" SOLID WHITE STOP LINE (TYP.)
- WHITE FLEXIBLE DELINEATOR (TYP.)

NOTE: ALL PAVEMENT MARKINGS CONFLICTING WITH PROPOSED DESIGN SHALL BE REMOVED



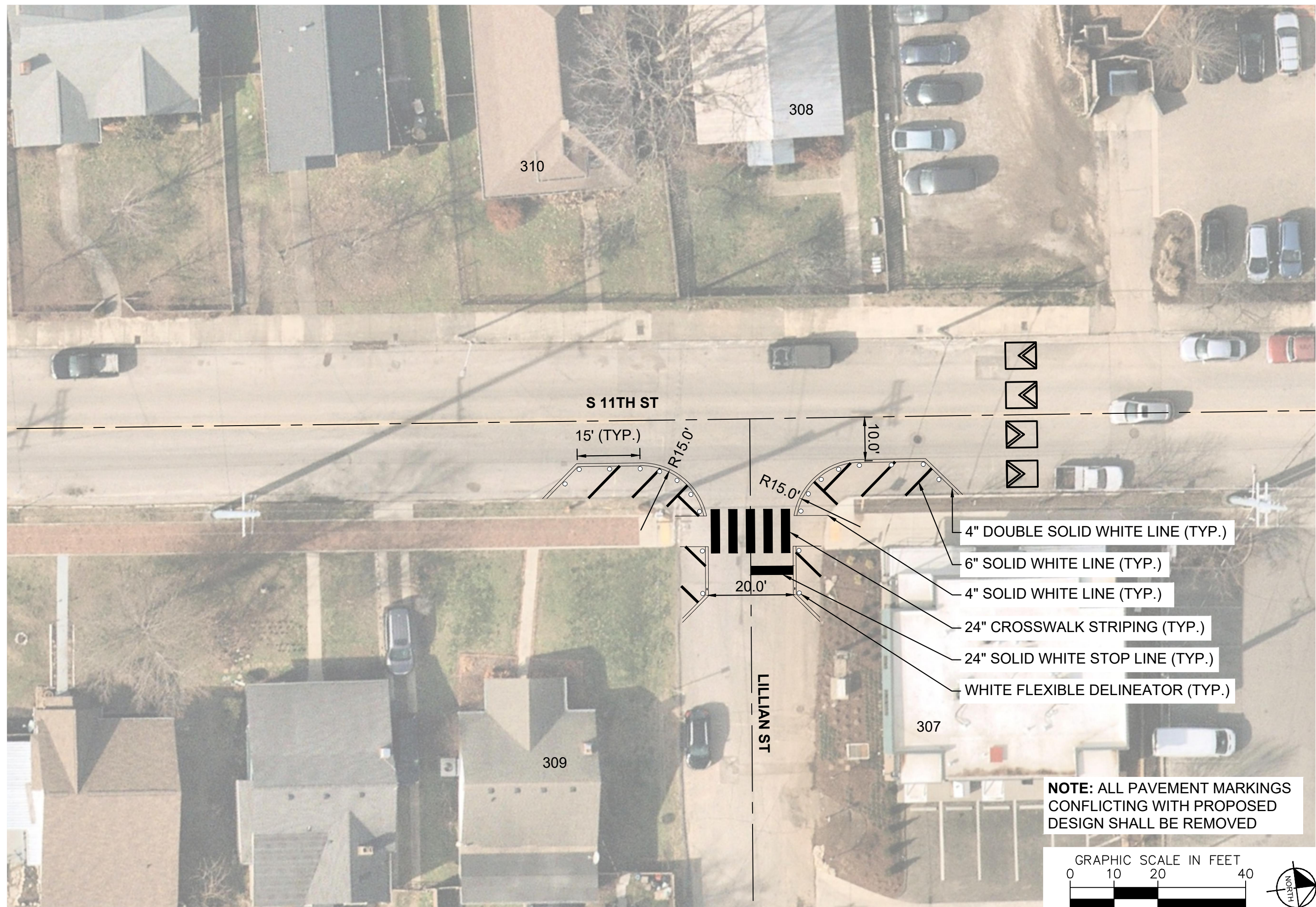
S 11TH STREET
TRAFFIC CALMING
NASHVILLE, TN



| | |
|-----------------------------------|----------|
| DESIGNED BY: | DJG |
| DRAWN BY: | DJG |
| CHECKED BY: | NDOT |
| DATE: | 2/9/2024 |
| KIMLEY-HORN PROJECT NO. 118900046 | |

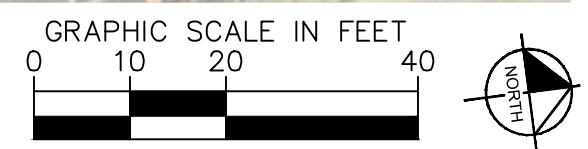
CONCEPT
SHEET NUMBER
04

This document, together with the concepts and designs presented herein, is intended only for the specific purpose and client for which it was prepared. Reuse or improper reliance on this document without written authorization and adaptation by Kimley-Horn and Associates, Inc. shall be without liability to Kimley-Horn and Associates, Inc.

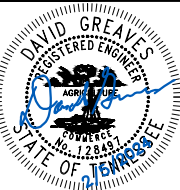
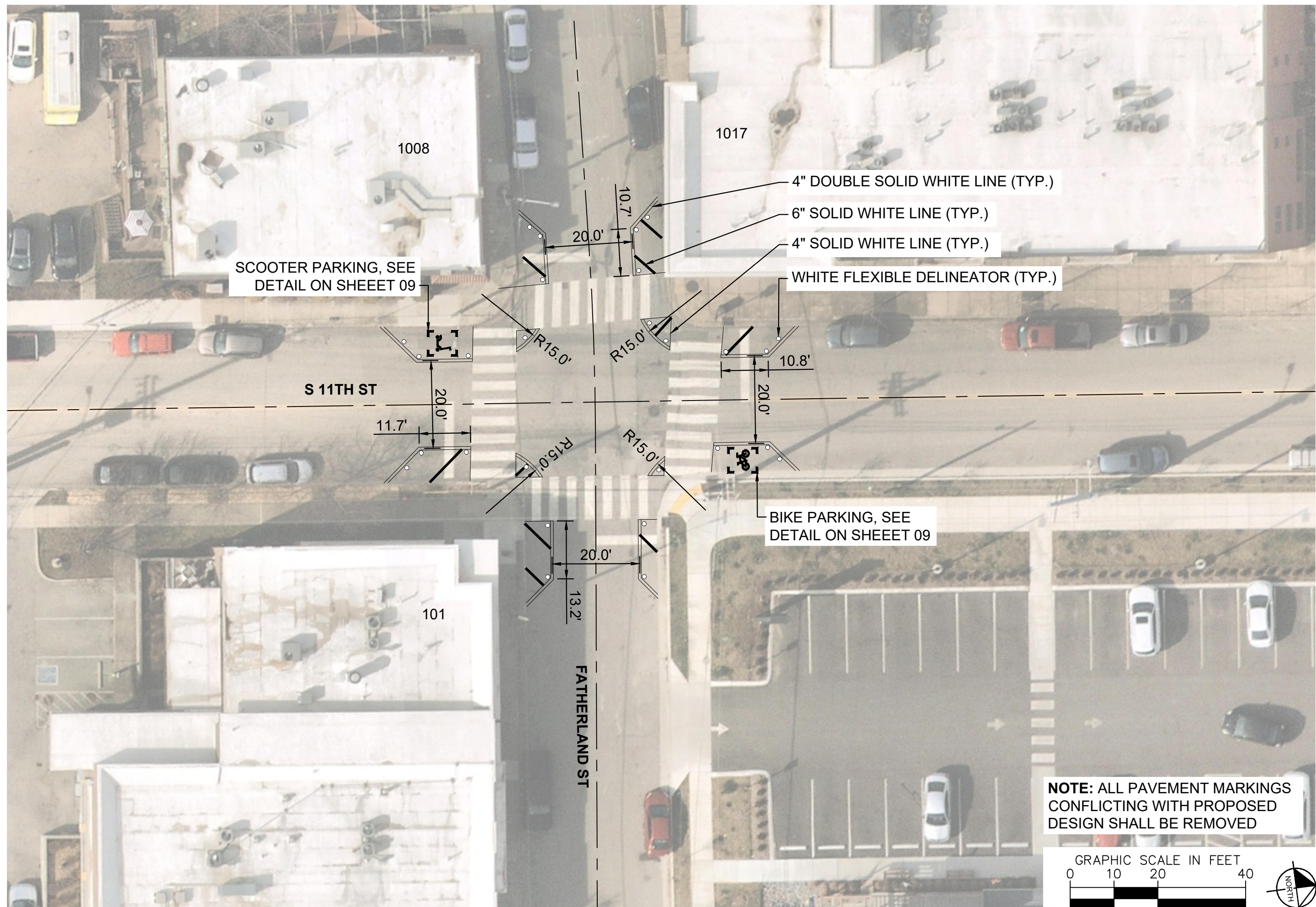


| | |
|--------------------------|-----------|
| DESIGNED BY: | DJG |
| DRAWN BY: | DJG |
| CHECKED BY: | NDOT |
| DATE: | 2/9/2024 |
| KIMLEY-HORN PROJECT NO.: | 118900046 |

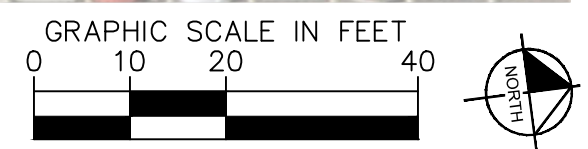
**NOTE: ALL PAVEMENT MARKINGS
CONFLICTING WITH PROPOSED
DESIGN SHALL BE REMOVED**



This document, together with the concepts and designs presented herein, is intended only for the specific purpose and client for which it was prepared. Reuse of and improper reliance on this document without written authorization and adaptation by Kimley-Horn and Associates, Inc. shall be without liability to Kimley-Horn and Associates, Inc.



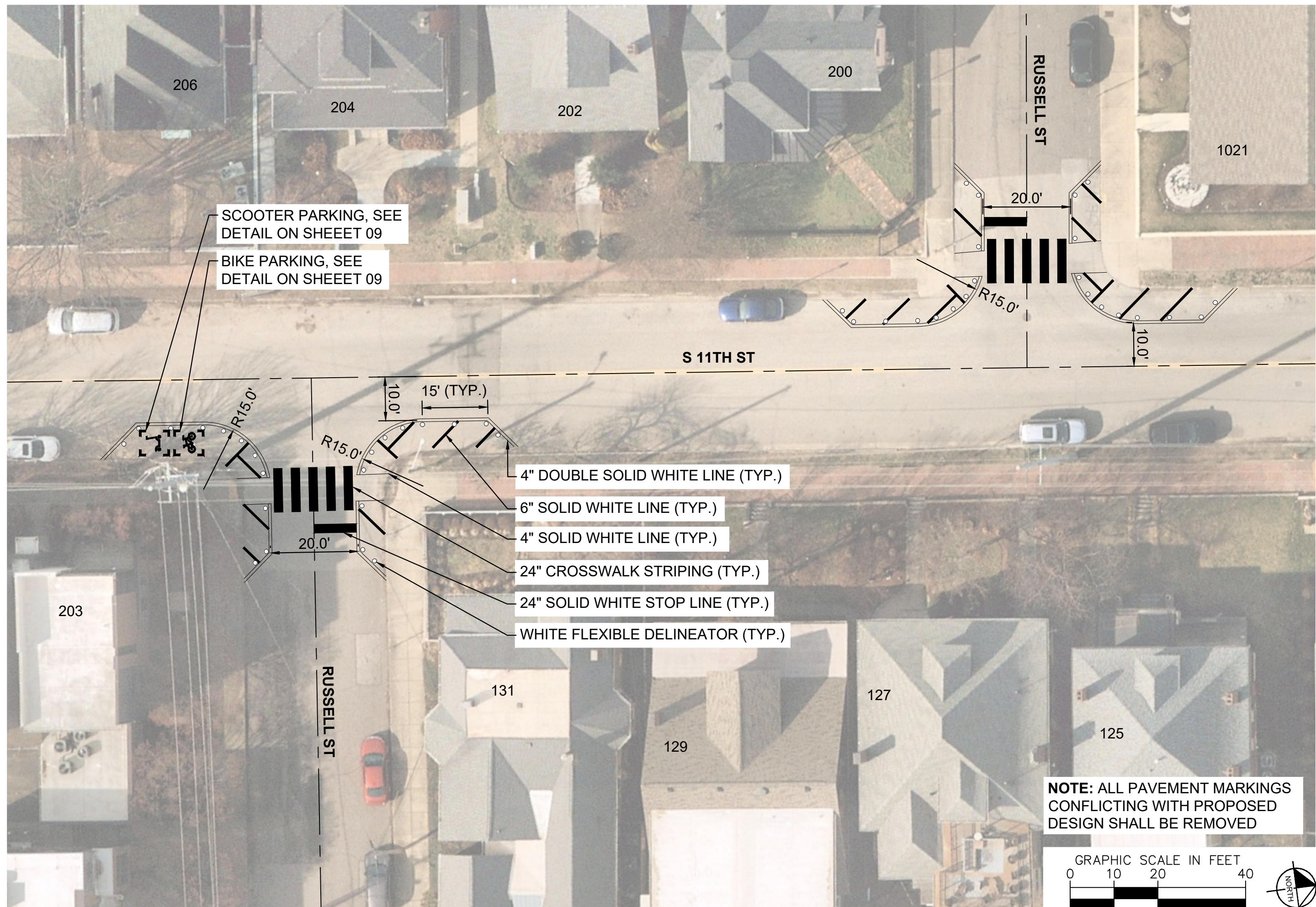
**NOTE: ALL PAVEMENT MARKINGS
CONFLICTING WITH PROPOSED
DESIGN SHALL BE REMOVED**



| | |
|--------------------------|-----------|
| DESIGNED BY: | DJG |
| DRAWN BY: | DJG |
| CHECKED BY: | NDOT |
| DATE: | 2/9/2024 |
| KIMLEY-HORN PROJECT NO.: | 118900046 |

CONCEPT
SHEET NUMBER
06

This document, together with the concepts and designs presented herein, is intended only for the specific purpose and client for which it was prepared. Reuse and improper reliance on this document without written authorization and adaptation by Kimley-Horn and Associates, Inc. shall be without liability to Kimley-Horn and Associates, Inc.



SCOOTER PARKING, SEE
DETAIL ON SHEET 09

BIKE PARKING, SEE
DETAIL ON SHEET 09

4" DOUBLE SOLID WHITE LINE (TYP.)

6" SOLID WHITE LINE (TYP.)

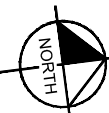
4" SOLID WHITE LINE (TYP.)

24" CROSSWALK STRIPING (TYP.)

24" SOLID WHITE STOP LINE (TYP.)

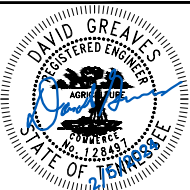
WHITE FLEXIBLE DELINEATOR (TYP.)

**NOTE: ALL PAVEMENT MARKINGS
CONFLICTING WITH PROPOSED
DESIGN SHALL BE REMOVED**



NDOT

**S 11TH STREET
TRAFFIC CALMING**
NASHVILLE, TN



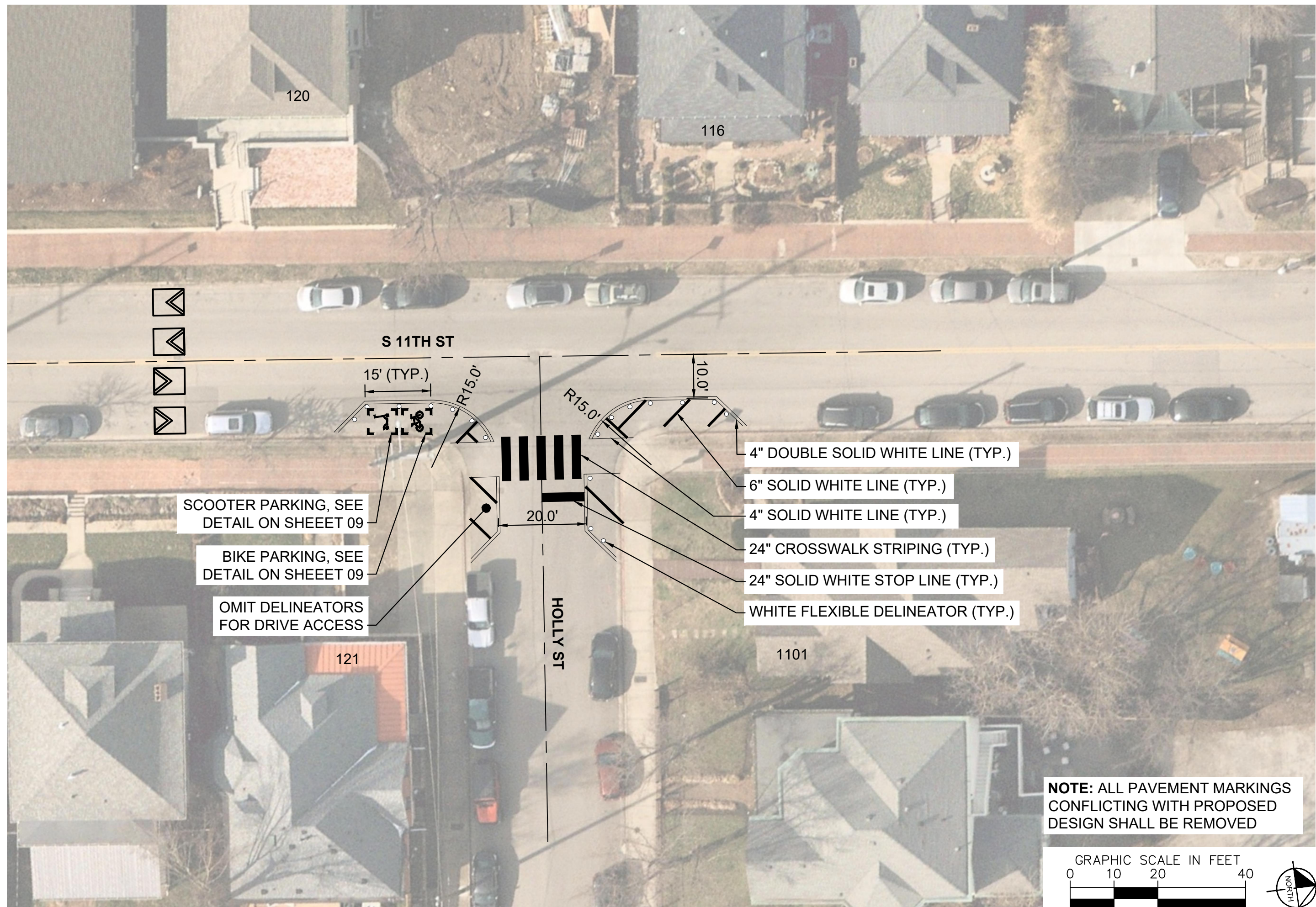
Kimley»Horn

| | |
|--------------------------|-----------|
| DESIGNED BY: | DJG |
| DRAWN BY: | DJG |
| CHECKED BY: | NDOT |
| DATE: | 2/9/2024 |
| KIMLEY-HORN PROJECT NO.: | 118900046 |

CONCEPT

SHEET NUMBER
07

This document, together with the concepts and designs presented herein, is intended only for the specific purpose and client for which it was prepared. Reuse or improper reliance on this document without written authorization and adaptation by Kimley-Horn and Associates, Inc. shall be without liability to Kimley-Horn and Associates, Inc.



120

116

S 11TH ST

15' (TYP.)

R15.0'

R15.0'

10.0'

SCOOTER PARKING, SEE
DETAIL ON SHEEET 09

BIKE PARKING, SEE
DETAIL ON SHEEET 09

OMIT DELINEATORS
FOR DRIVE ACCESS

20.0'

HOLLY ST

4" DOUBLE SOLID WHITE LINE (TYP.)

6" SOLID WHITE LINE (TYP.)

4" SOLID WHITE LINE (TYP.)

24" CROSSWALK STRIPING (TYP.)

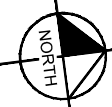
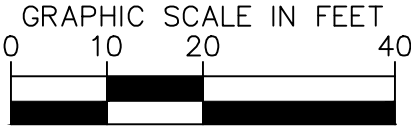
24" SOLID WHITE STOP LINE (TYP.)

WHITE FLEXIBLE DELINEATOR (TYP.)

121

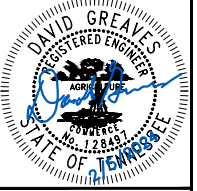
1101

**NOTE: ALL PAVEMENT MARKINGS
CONFLICTING WITH PROPOSED
DESIGN SHALL BE REMOVED**



NDOT

S 11TH STREET
TRAFFIC CALMING
NASHVILLE, TN



Kimley»Horn

| | |
|--------------------------|-----------|
| DESIGNED BY: | DJG |
| DRAWN BY: | DJG |
| CHECKED BY: | NDOT |
| DATE: | 2/9/2024 |
| KIMLEY-HORN PROJECT NO.: | 118900046 |

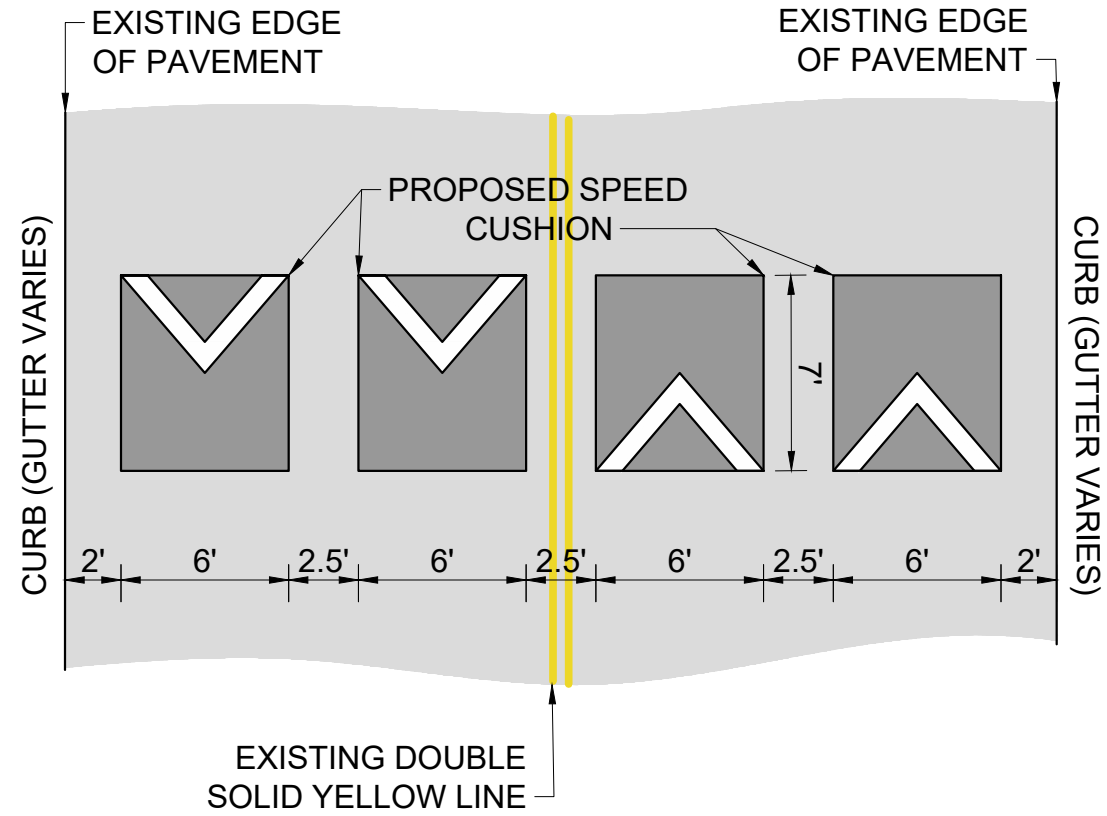
CONCEPT

SHEET NUMBER
08

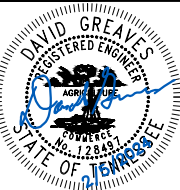
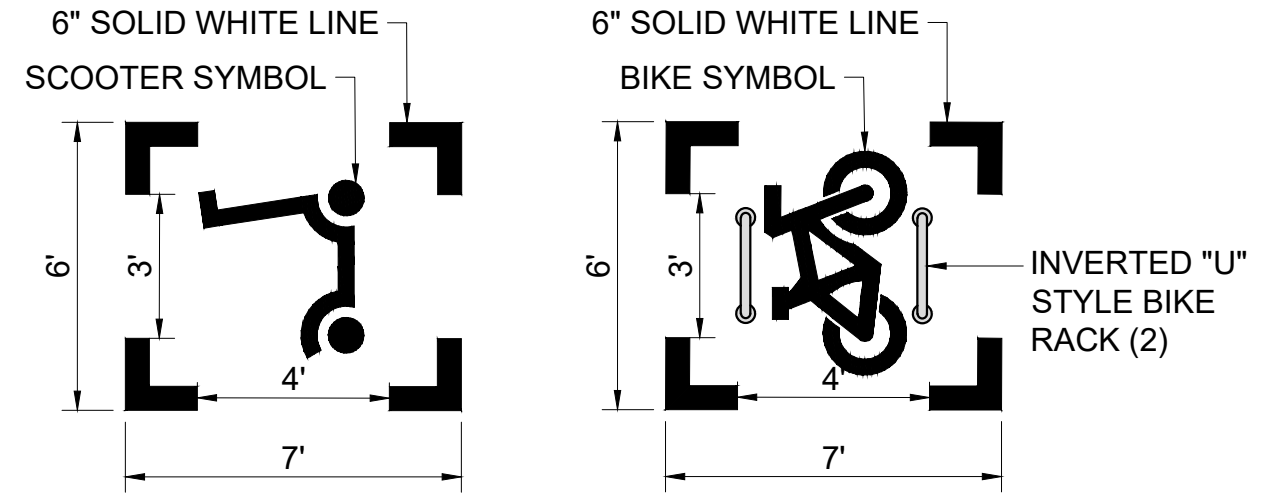
This document, together with the concepts and designs presented herein, as an instrument of service, is intended only for the specific purpose and client for which it was prepared. Reuse of and improper reliance on this document without written authorization and adaptation by Kimley-Horn and Associates, Inc. shall be without liability to Kimley-Horn and Associates, Inc.

CONFIGURATION A

35.5' OF PAVEMENT



SCOOTER AND BIKE CORRALS



| | |
|-----------------------------------|----------|
| DESIGNED BY: | DJG |
| DRAWN BY: | DJG |
| CHECKED BY: | NDOT |
| DATE: | 2/9/2024 |
| KIMLEY-HORN PROJECT NO. 118800046 | |

DETAIL

SHEET NUMBER
09