

ESTIMATED QUANTITIES

SPEED CUSHIONS

6' X 10.5' SPEED CUSHION WITH ONE ARROW	12
---	----

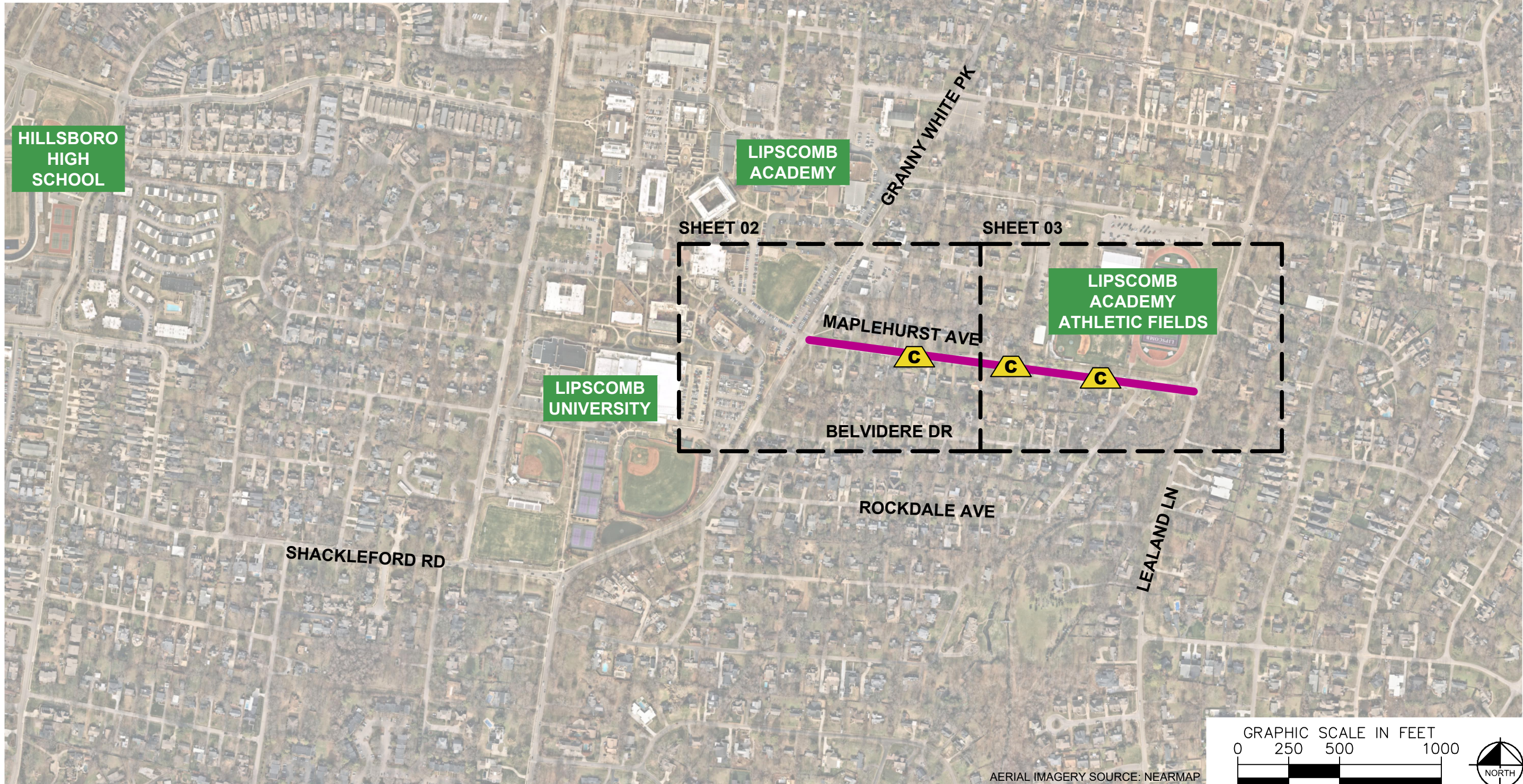
SIGNING

W17-1 (VAR.) "SPEED CUSHION" SIGN (30" X 30")	6
W13-1P "20 M.P.H" SIGN (18" X 18")	6

NOTE: ALL LOCATIONS ARE REFERENCED FROM CENTERLINE OF DRIVEWAYS OR OTHER LANDMARKS TO THE CENTER OF SPEED CUSHIONS OR SIGNS.

LEGEND

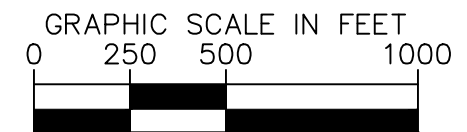
-  LIMITS OF TRAFFIC CALMING PROJECT
-  SPEED CUSHIONS



DESIGNED BY: JLH
DRAWN BY: TWR
CHECKED BY: NDOT
DATE: 2/21/2024
KIMLEY-HORN PROJECT NO. 118900046

KEY

SHEET NUMBER
01



AERIAL IMAGERY SOURCE: NEARMAP

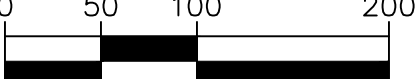
SPEED CUSHIONS



SPEED CUSHION CONFIGURATION A
62' EAST OF DRIVEWAY AT 1119 MAPLEHURST AVE



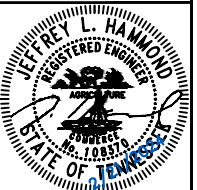
GRAPHIC SCALE IN FEET



AERIAL IMAGERY SOURCE: NEARMAP

NDOT

MAPLEHURST AVENUE
TRAFFIC CALMING
NASHVILLE, TN



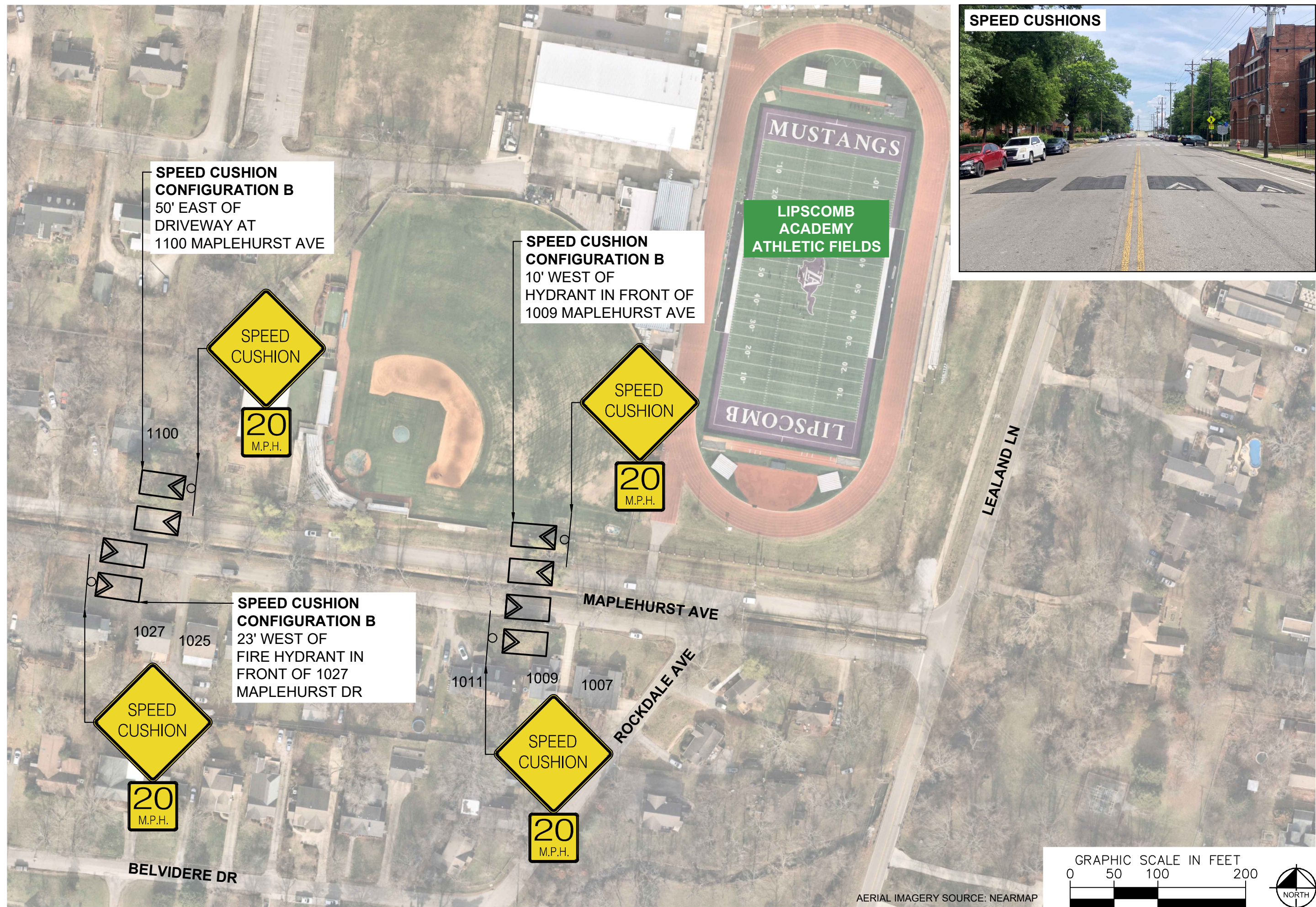
DESIGNED BY: JLH
DRAWN BY: TWR
CHECKED BY: NDOT
DATE: 2/21/2024
KIMLEY-HORN PROJECT NO. 118900046

CONCEPT

SHEET NUMBER
02

This document, together with the concepts and designs presented herein, is intended only for the specific purpose and client for which it was prepared. Reuse of and improper reliance on this document without written authorization and adaptation by Kimley-Horn and Associates, Inc. shall be without liability to Kimley-Horn and Associates, Inc.

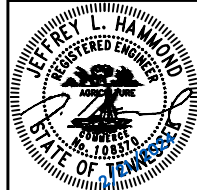
This document, together with the concepts and designs presented herein, is intended only for the specific purpose and client for which it was prepared. Reuse of and improper reliance on this document without written authorization and adaptation by Kimley-Horn and Associates, Inc. shall be without liability to Kimley-Horn and Associates, Inc.



SPEED CUSHIONS

NDOT

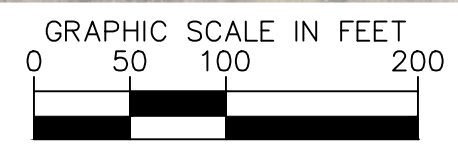
MAPLEHURST AVENUE
TRAFFIC CALMING
NASHVILLE, TN



DESIGNED BY: JLH
DRAWN BY: TWR
CHECKED BY: NDOT
DATE: 2/21/2024
KIMLEY-HORN PROJECT NO. 118900046

CONCEPT

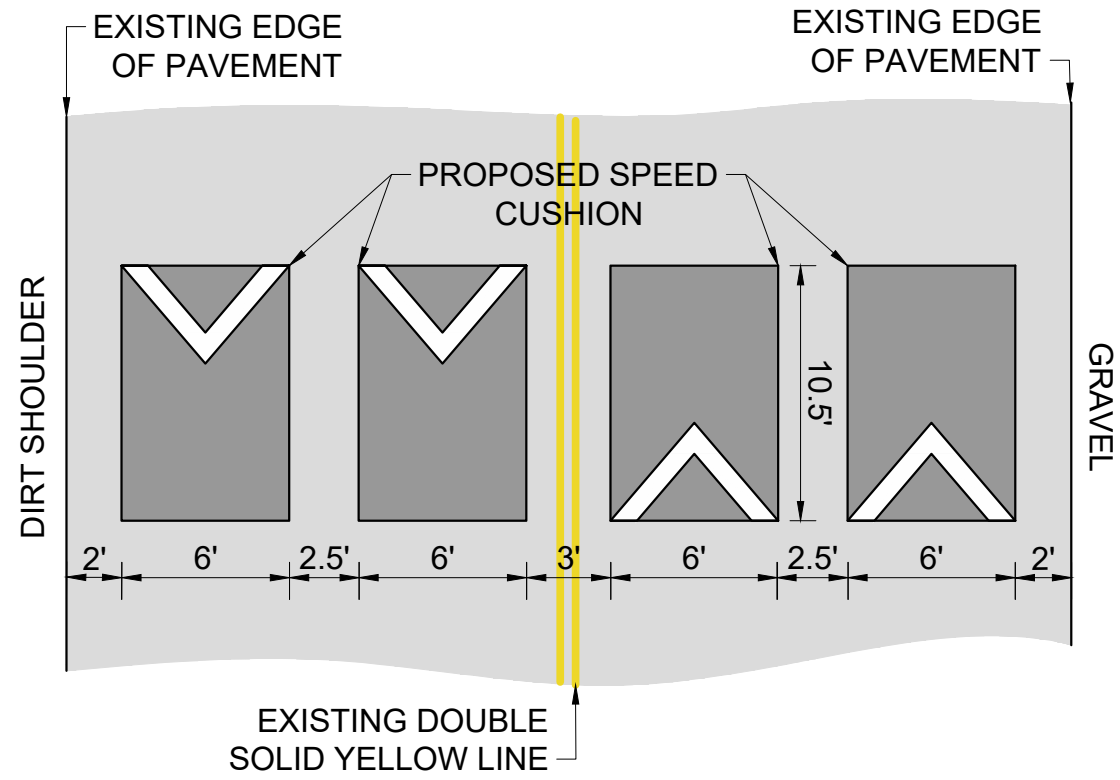
SHEET NUMBER
03



AERIAL IMAGERY SOURCE: NEARMAP

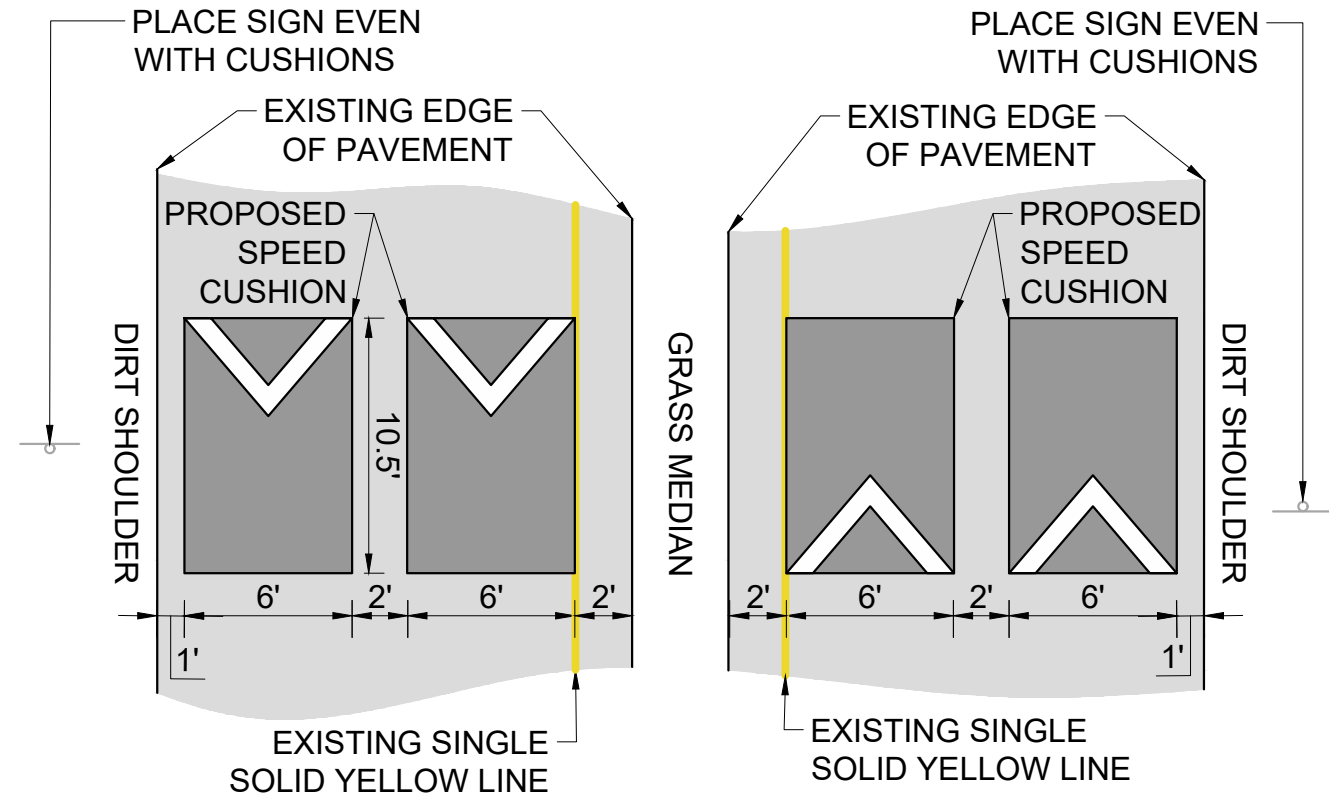
CONFIGURATION A

36' OF PAVEMENT



CONFIGURATION B

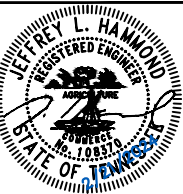
17' OF PAVEMENT (EACH SIDE)



This document, together with the concepts and designs presented herein, is intended only for the specific purpose and client for which it was prepared. Reuse of and improper reliance on this document without written authorization and adaptation by Kimley-Horn and Associates, Inc. shall be without liability to Kimley-Horn and Associates, Inc.



MAPLEHURST AVENUE
TRAFFIC CALMING
NASHVILLE, TN



DESIGNED BY: JLH
DRAWN BY: TWR
CHECKED BY: NDOT
DATE: 2/21/2024
KIMLEY-HORN PROJECT NO. 118800046

DETAIL

SHEET NUMBER
04