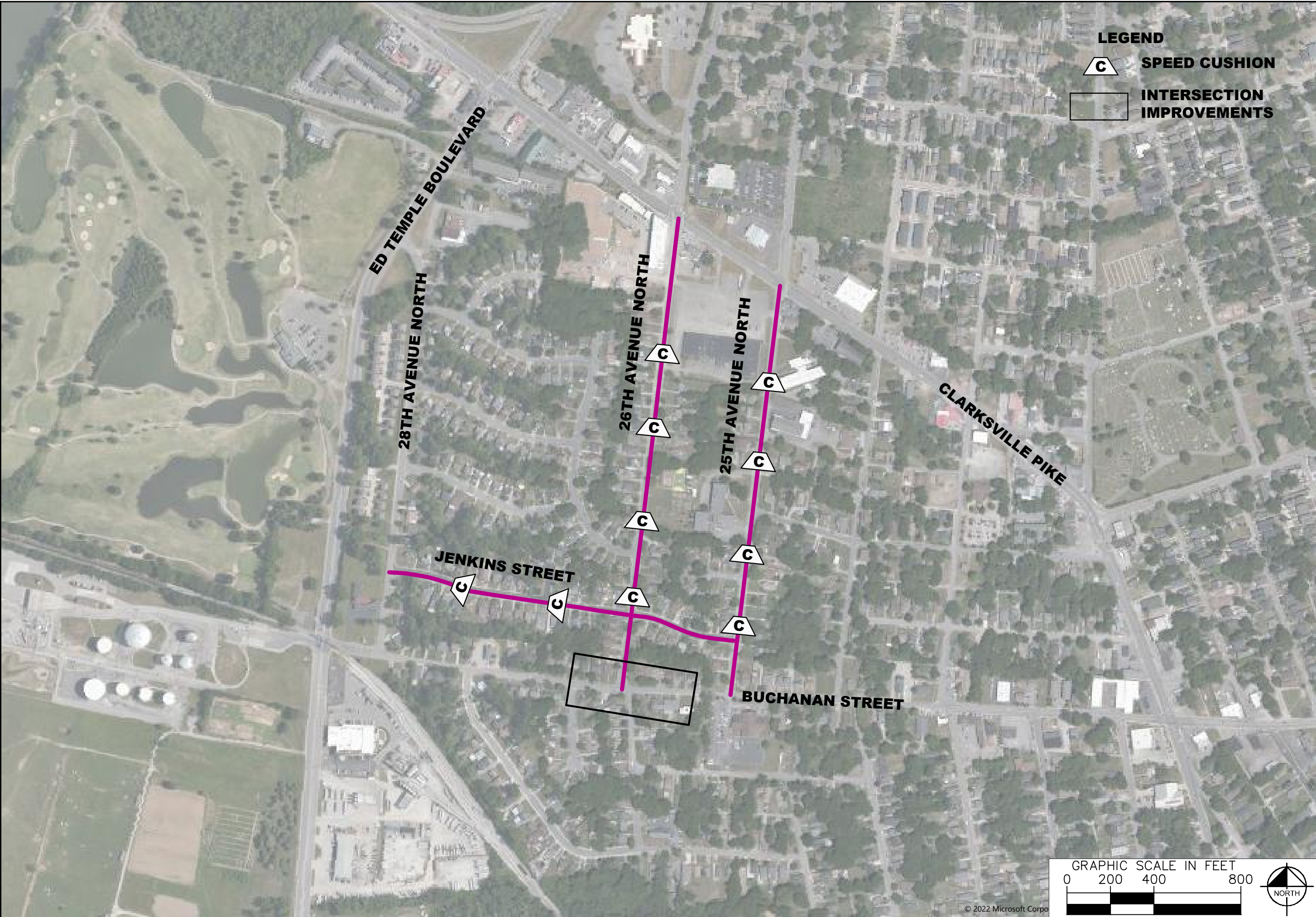


This document, together with the concepts and designs presented herein, is intended only for the specific purpose and client for which it was prepared. Reuse of and improper reliance on this document without written authorization and adaptation by Kimley-Horn and Associates, Inc. shall be without liability to Kimley-Horn and Associates, Inc.



LEGEND

-  **SPEED CUSHION**
-  **INTERSECTION IMPROVEMENTS**



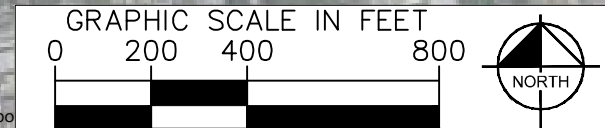
**CUMBERLAND GARDENS
TRAFFIC CALMING
NASHVILLE, TN**

**DRAFT
PRELIMINARY
PLANS
FOR REVIEW ONLY**

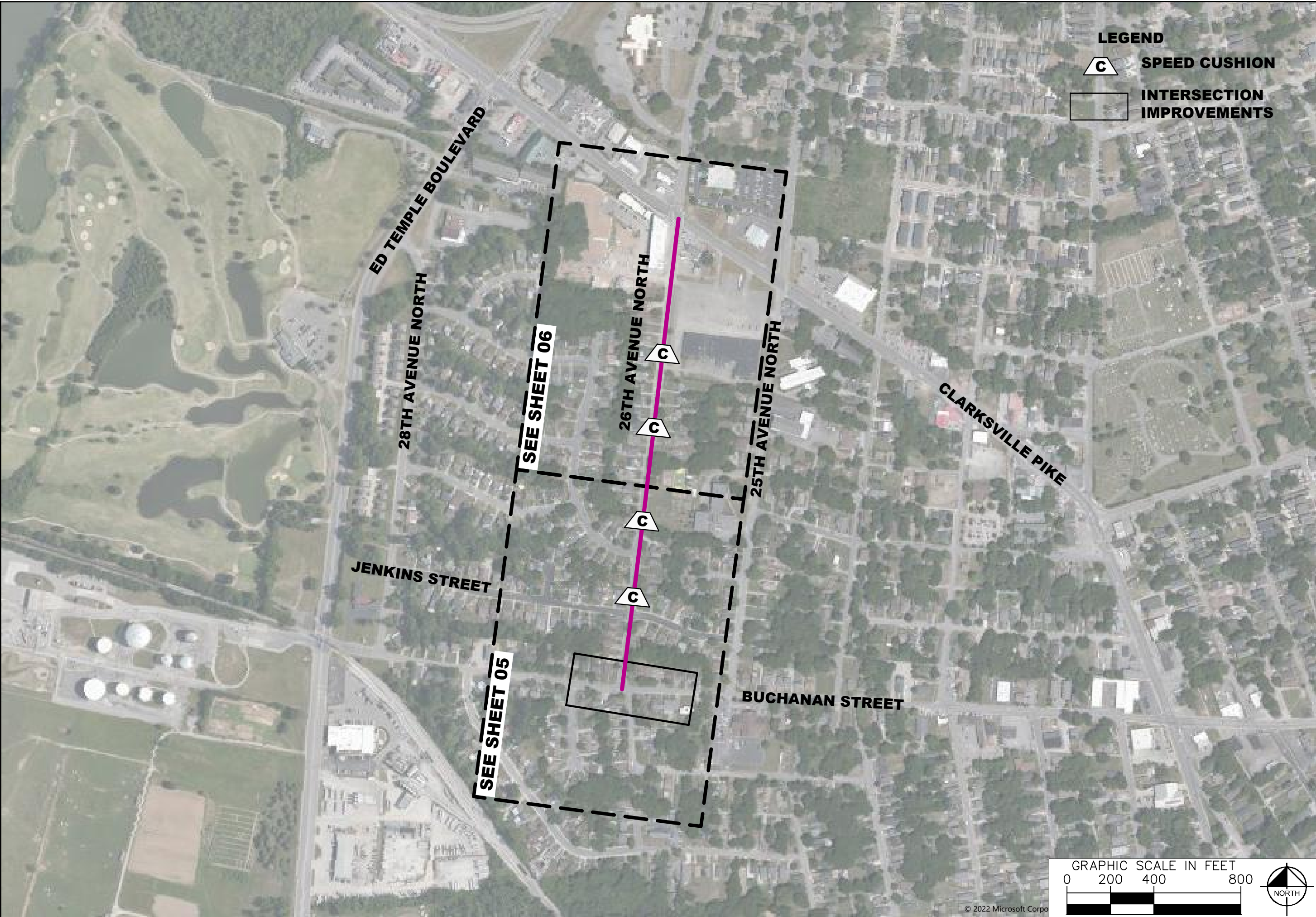
NO.	REVISIONS	DATE	BY
1			
2			
3			
4			
5			
6			
7			
8			
9			
10			

DESIGNED BY: _____
 DRAWN BY: _____
 CHECKED BY: _____
 DATE: 06/15/2022
 KIMLEY-HORN PROJECT NO. 11890005

CONCEPT PLAN
SHEET NUMBER
01



This document, together with the concepts and designs presented herein, is intended only for the specific purpose and client for which it was prepared. Reuse of and improper reliance on this document without written authorization and adaptation by Kimley-Horn and Associates, Inc. shall be without liability to Kimley-Horn and Associates, Inc.



LEGEND

-  **SPEED CUSHION**
-  **INTERSECTION IMPROVEMENTS**



**CUMBERLAND GARDENS
TRAFFIC CALMING
NASHVILLE, TN**

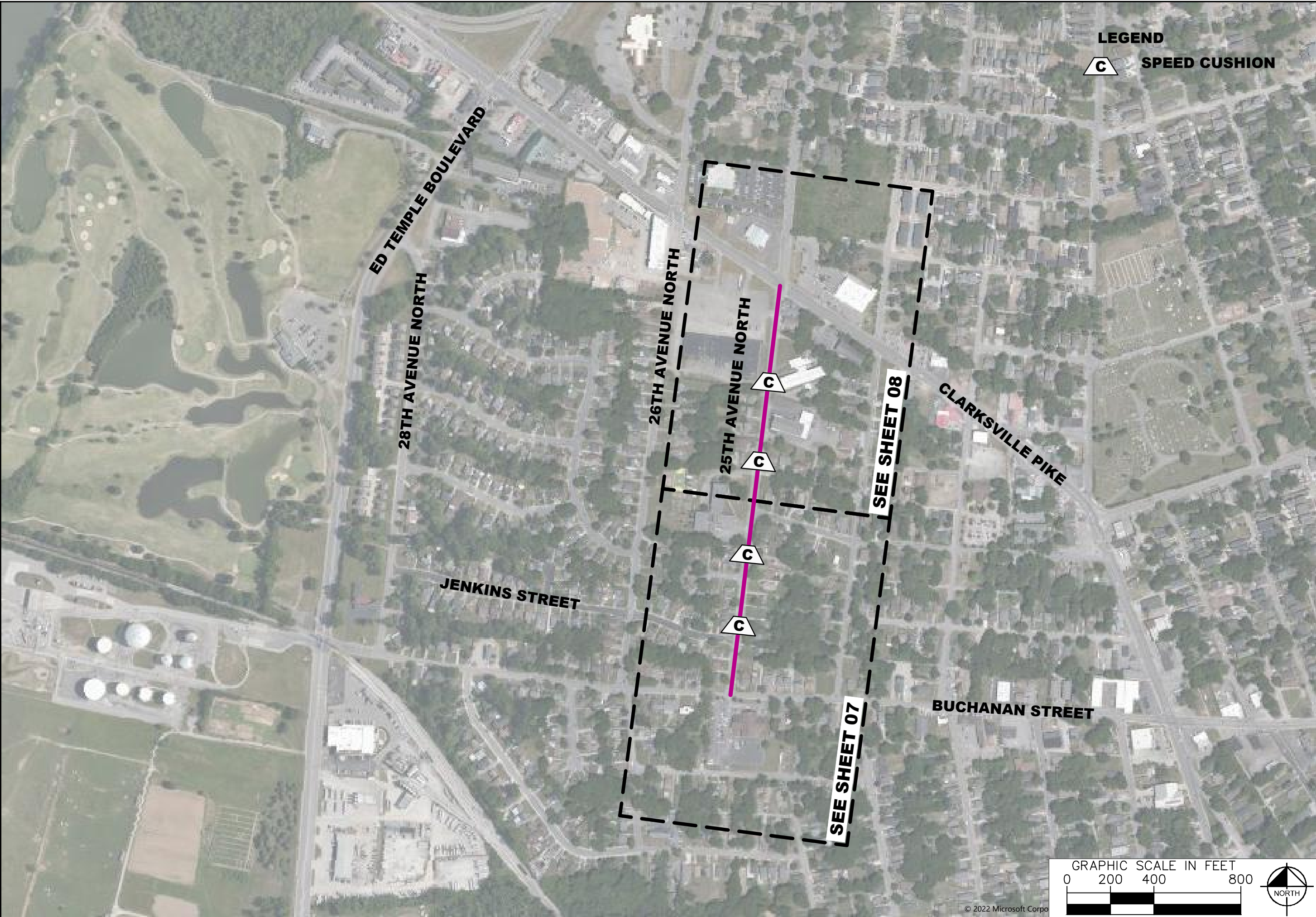
**DRAFT
PRELIMINARY
PLANS
FOR REVIEW ONLY**

NO.	REVISIONS	DATE	BY
1			
2			
3			
4			
5			
6			
7			
8			
9			
10			

DESIGNED BY: _____
 DRAWN BY: _____
 CHECKED BY: _____
 DATE: 06/15/2022
 KIMLEY-HORN PROJECT NO. 11890005

CONCEPT PLAN
SHEET NUMBER
02

This document, together with the concepts and designs presented herein, is intended only for the specific purpose and client for which it was prepared. Reuse of and improper reliance on this document without written authorization and adaptation by Kimley-Horn and Associates, Inc. shall be without liability to Kimley-Horn and Associates, Inc.



LEGEND

 **SPEED CUSHION**



**CUMBERLAND GARDENS
TRAFFIC CALMING
NASHVILLE, TN**

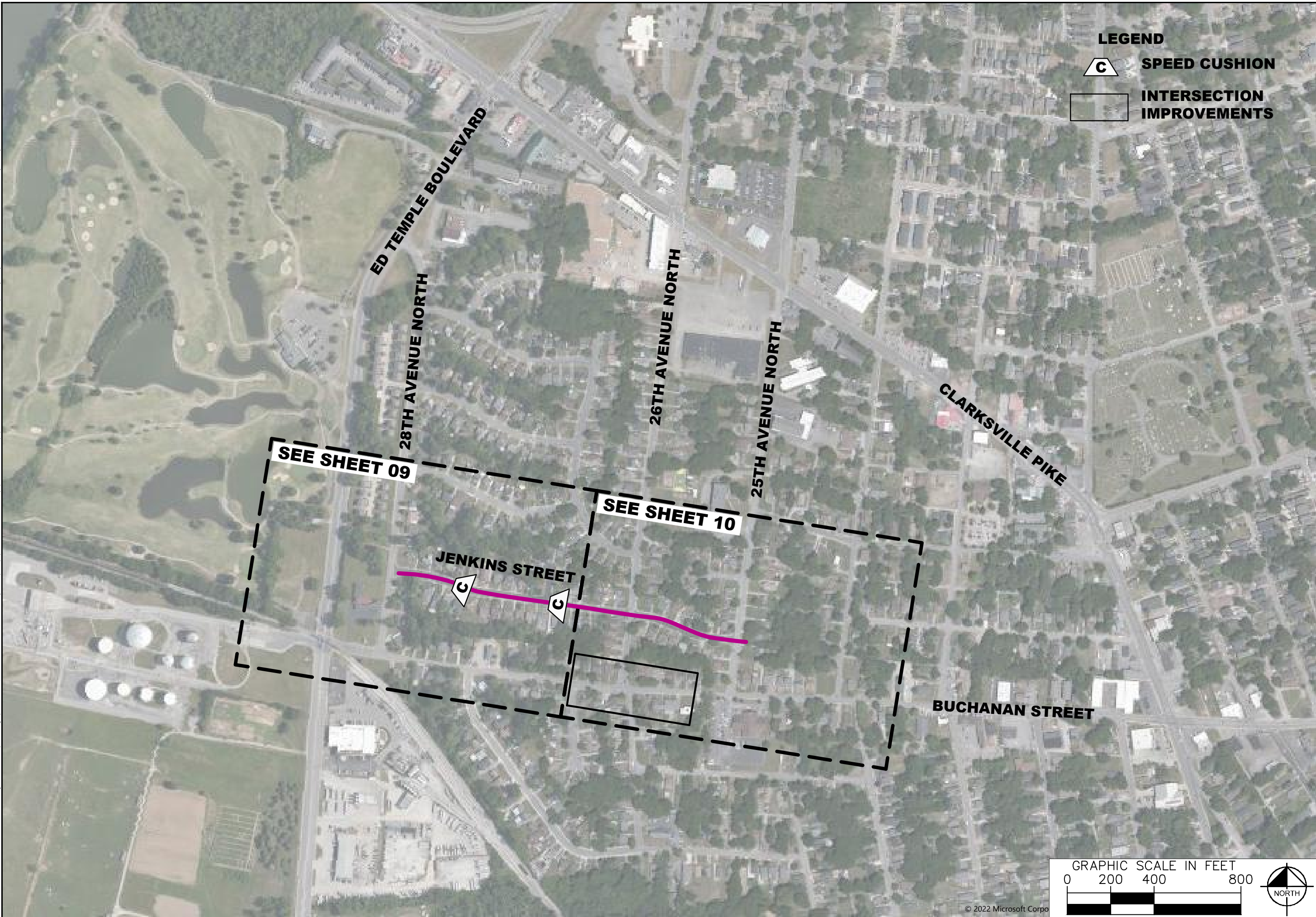
**DRAFT
PRELIMINARY
PLANS
FOR REVIEW ONLY**

NO.	REVISIONS	DATE	BY
1			
2			
3			
4			
5			
6			
7			
8			
9			
10			

DESIGNED BY: _____
DRAWN BY: _____
CHECKED BY: _____
DATE: 06/15/2022
KIMLEY-HORN PROJECT NO. 118900005

CONCEPT PLAN
SHEET NUMBER
03

This document, together with the concepts and designs presented herein, is intended only for the specific purpose and client for which it was prepared. Reuse of and improper reliance on this document without written authorization and adaptation by Kimley-Horn and Associates, Inc. shall be without liability to Kimley-Horn and Associates, Inc.



LEGEND



SPEED CUSHION



INTERSECTION IMPROVEMENTS



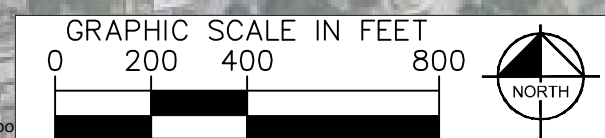
**CUMBERLAND GARDENS
TRAFFIC CALMING
NASHVILLE, TN**

**DRAFT
PRELIMINARY
PLANS
FOR REVIEW ONLY**

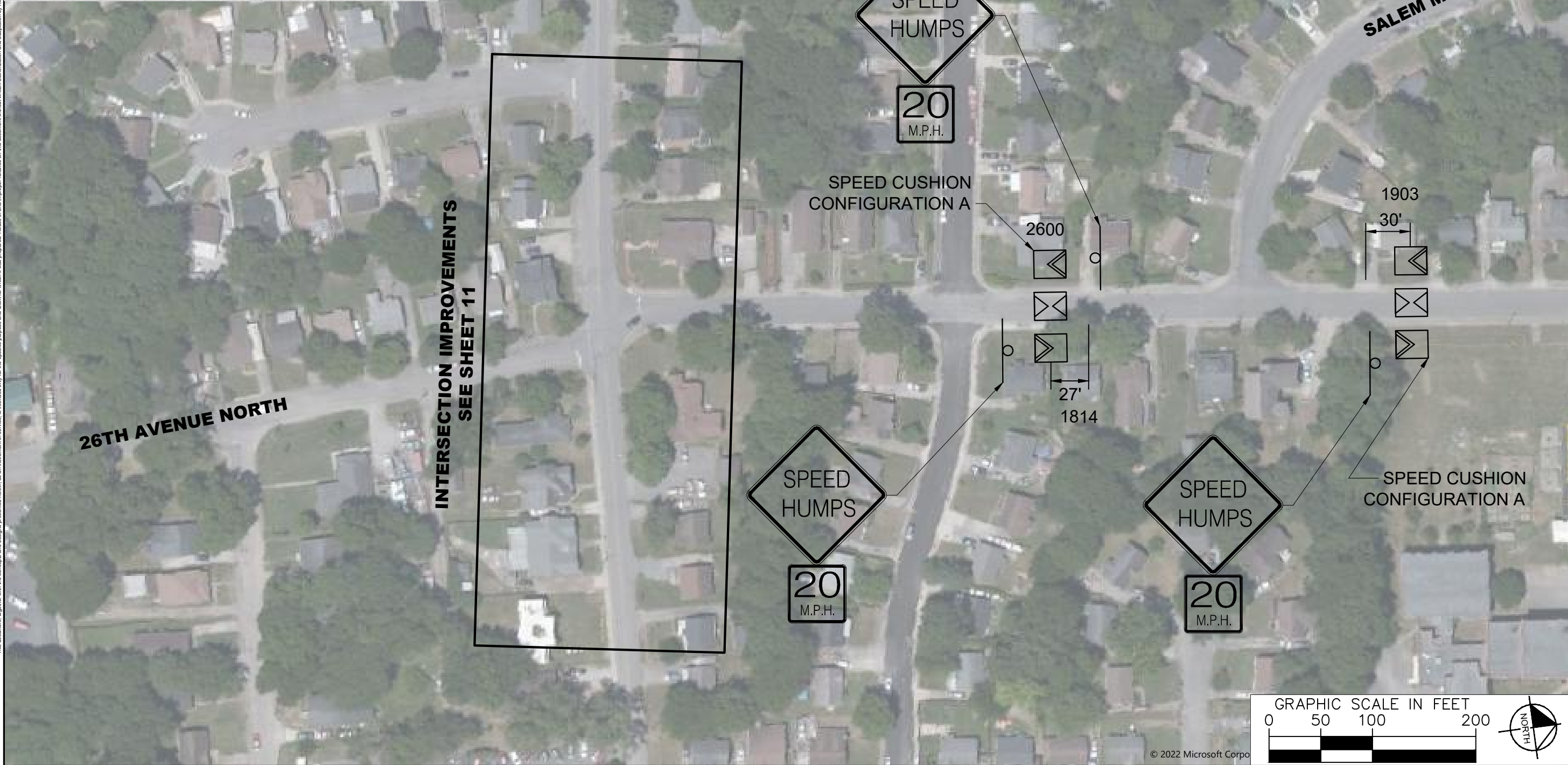
NO.	REVISIONS	DATE	BY
1			
2			
3			
4			
5			
6			
7			
8			
9			
10			

DESIGNED BY: _____
 DRAWN BY: EW
 CHECKED BY: NDOT
 DATE: 06/15/2022
 KIMLEY-HORN PROJECT NO. 118900005

CONCEPT PLAN
 SHEET NUMBER
04



This document, together with the concepts and designs presented herein, is intended only for the specific purpose and client for which it was prepared. Reuse of and improper reliance on this document without written authorization and adaptation by Kimley-Horn and Associates, Inc. shall be without liability to Kimley-Horn and Associates, Inc.



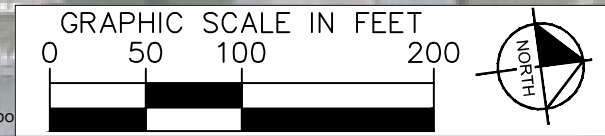
CUMBERLAND GARDENS
TRAFFIC CALMING
NASHVILLE, TN

DRAFT
PRELIMINARY
PLANS
FOR REVIEW ONLY

NO.	DATE	BY
1		
2		
3		
4		
5		
6		
7		
8		
9		
10		

DESIGNED BY: _____
 DRAWN BY: EW
 CHECKED BY: NDOT
 DATE: 06/15/2022
 KIMLEY-HORN PROJECT NO. 11890005

CONCEPT PLAN
 SHEET NUMBER
05



This document, together with the concepts and designs presented herein, is intended only for the specific purpose and client for which it was prepared. Reuse of this document without written authorization and adaptation by Kimley-Horn and Associates, Inc. shall be without liability to Kimley-Horn and Associates, Inc.



CUMBERLAND GARDENS
TRAFFIC CALMING
NASHVILLE, TN

DRAFT
PRELIMINARY
PLANS
FOR REVIEW ONLY

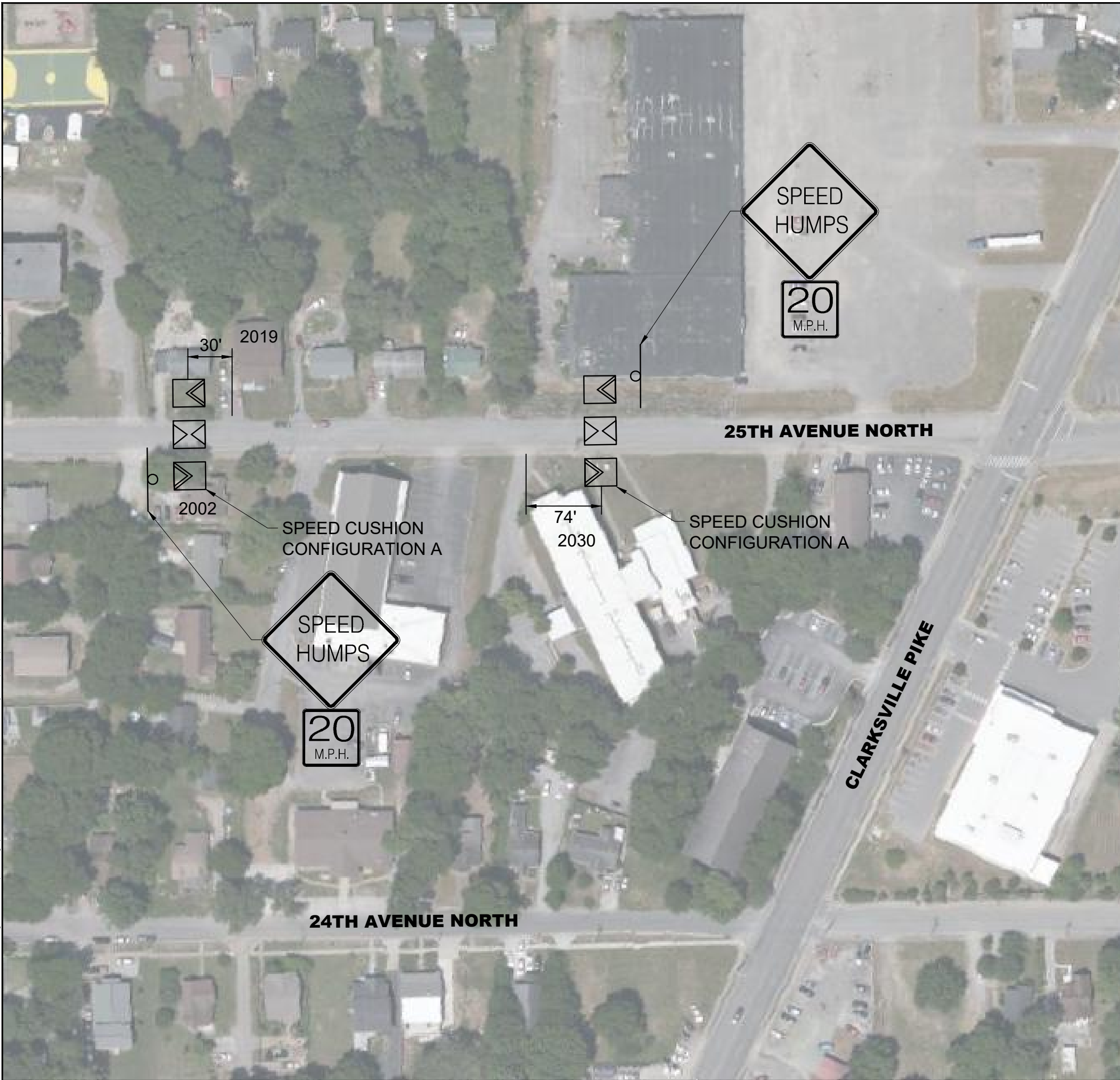
NO.	REVISIONS	DATE	BY
1			
2			
3			
4			
5			
6			
7			
8			
9			
10			

DESIGNED BY: _____
 DRAWN BY: EW
 CHECKED BY: NDOT
 DATE: 06/15/2022
 KIMLEY-HORN PROJECT NO. 118900005

CONCEPT PLAN
 SHEET NUMBER
06



This document, together with the concepts and designs presented herein, is intended only for the specific purpose and client for which it was prepared. Reuse of and improper reliance on this document without written authorization and adaptation by Kimley-Horn and Associates, Inc. shall be without liability to Kimley-Horn and Associates, Inc.



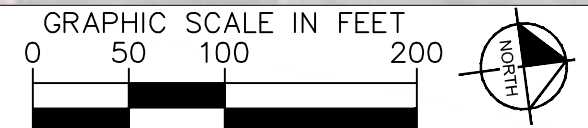
**CUMBERLAND GARDENS
TRAFFIC CALMING
NASHVILLE, TN**

**DRAFT
PRELIMINARY
PLANS
FOR REVIEW ONLY**

NO.	DATE	BY	REVISIONS
1			
2			
3			
4			
5			
6			
7			
8			
9			
10			

DESIGNED BY: _____
 DRAWN BY: EW
 CHECKED BY: NDOT
 DATE: 06/15/2022
 KIMLEY-HORN PROJECT NO. 118900005

CONCEPT PLAN
 SHEET NUMBER
08



This document, together with the concepts and designs presented herein, is intended only for the specific purpose and client for which it was prepared. Reuse of and improper reliance on this document without written authorization and adaptation by Kimley-Horn and Associates, Inc. shall be without liability to Kimley-Horn and Associates, Inc.



**CUMBERLAND GARDENS
TRAFFIC CALMING
NASHVILLE, TN**

**DRAFT
PRELIMINARY
PLANS
FOR REVIEW ONLY**

NO.	REVISIONS	DATE	BY
1			
2			
3			
4			
5			
6			
7			
8			
9			
10			

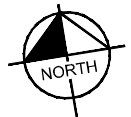
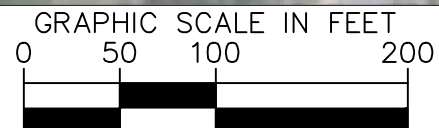
DESIGNED BY: _____
 DRAWN BY: EW
 CHECKED BY: NDOT
 DATE: 06/15/2022
 KIMLEY-HORN PROJECT NO. 118900005

CONCEPT PLAN
 SHEET NUMBER
09

This document, together with the concepts and designs presented herein, is intended only for the specific purpose and client for which it was prepared. Reuse of and improper reliance on this document without written authorization and adaptation by Kimley-Horn and Associates, Inc. shall be without liability to Kimley-Horn and Associates, Inc.



**INTERSECTION IMPROVEMENTS
SEE SHEET 11**



**CUMBERLAND GARDENS
TRAFFIC CALMING
NASHVILLE, TN**

**DRAFT
PRELIMINARY
PLANS
FOR REVIEW ONLY**

NO.	REVISIONS	DATE	BY
1			
2			
3			
4			
5			
6			
7			
8			
9			
10			

DESIGNED BY: JH
DRAWN BY: EW
CHECKED BY: NDOT
DATE: 06/15/2022

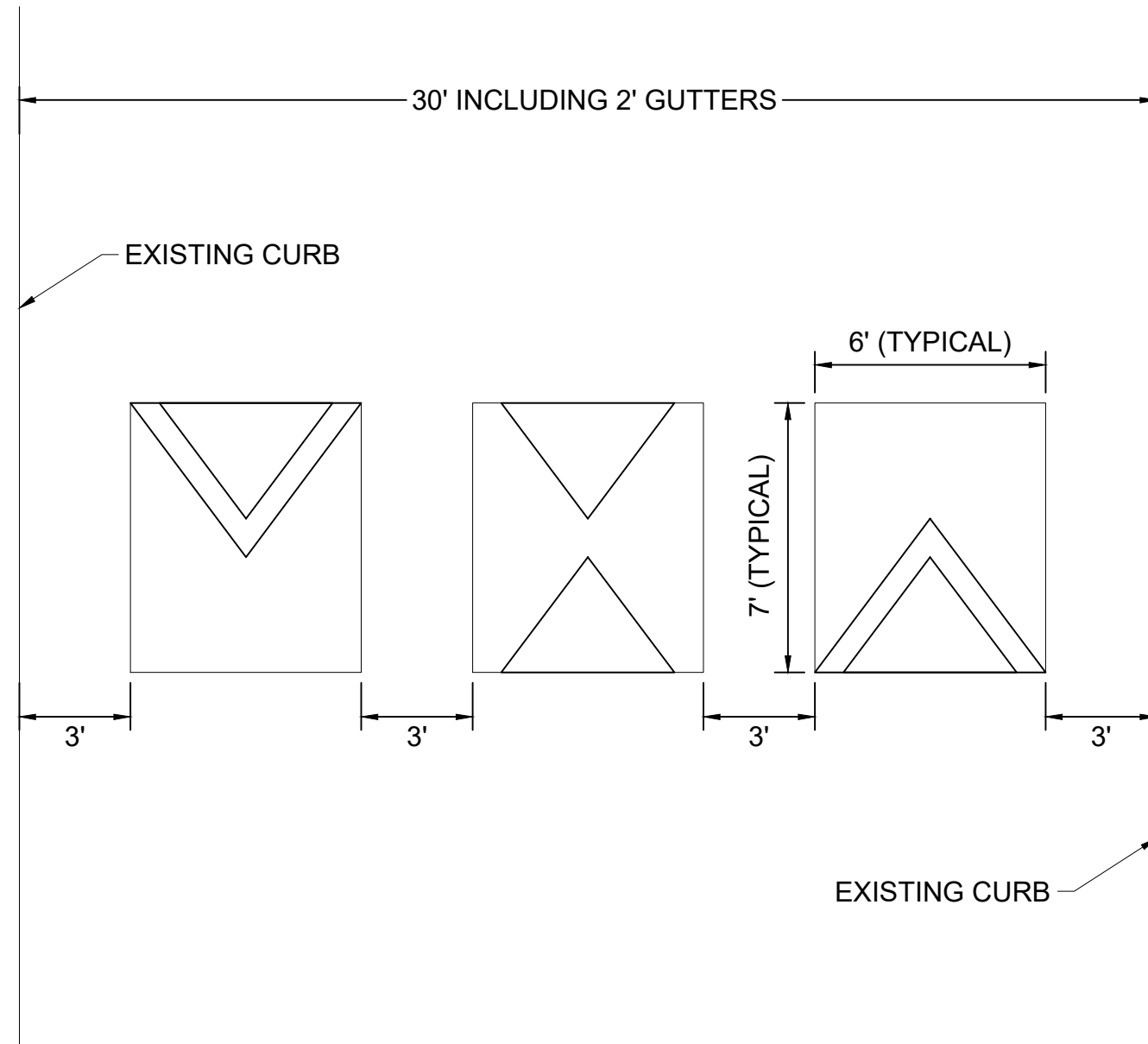
KIMLEY-HORN PROJECT NO. 11890005

CONCEPT PLAN

SHEET NUMBER
10

This document, together with the concepts and designs presented herein, is intended only for the specific purpose and client for which it was prepared. Reuse of and improper reliance on this document without written authorization and adaptation by Kimley-Horn and Associates, Inc. shall be without liability to Kimley-Horn and Associates, Inc.

CONFIGURATION A



**CUMBERLAND GARDENS
TRAFFIC CALMING**
NASHVILLE, TN

**DRAFT
PRELIMINARY
PLANS**
FOR REVIEW ONLY

NO.	REVISIONS	DATE	BY
1			
2			
3			
4			
5			
6			
7			
8			
9			
10			

DESIGNED BY: _____
 DRAWN BY: _____
 CHECKED BY: _____
 DATE: 06/15/2022

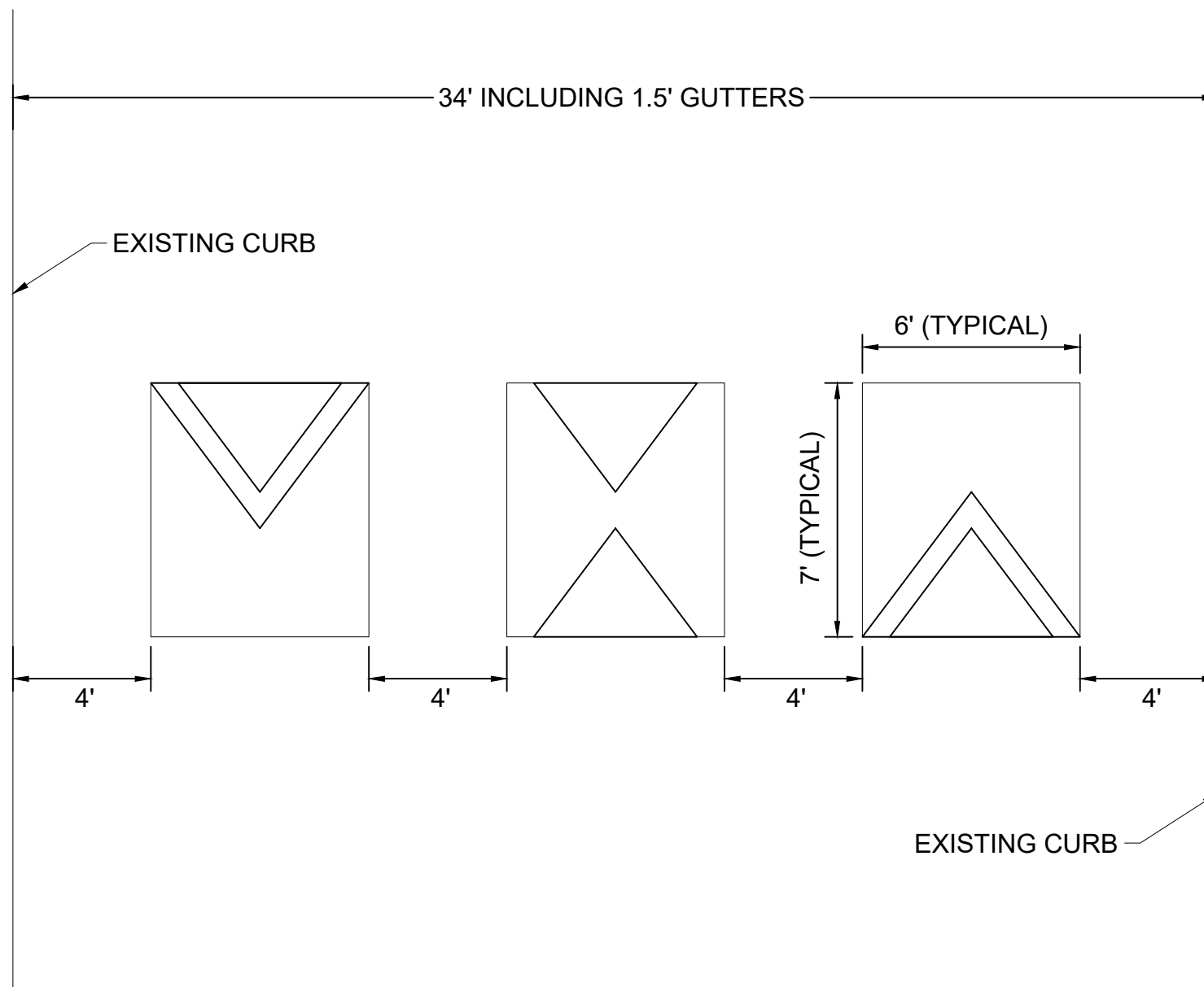
KIMLEY-HORN PROJECT NO. 118900005

CONCEPT PLAN

SHEET NUMBER
12

This document, together with the concepts and designs presented herein, is intended only for the specific purpose and client for which it was prepared. Reuse of and improper reliance on this document without written authorization and adaptation by Kimley-Horn and Associates, Inc. shall be without liability to Kimley-Horn and Associates, Inc.

CONFIGURATION B



**CUMBERLAND GARDENS
TRAFFIC CALMING**
NASHVILLE, TN

**DRAFT
PRELIMINARY
PLANS**
FOR REVIEW ONLY

NO.	REVISIONS	DATE	BY
1			
2			
3			
4			
5			
6			
7			
8			
9			
10			

DESIGNED BY: JH
 DRAWN BY: EW
 CHECKED BY: NDOT
 DATE: 06/15/2022

KIMLEY-HORN PROJECT NO. 118900005

CONCEPT PLAN

SHEET NUMBER
13