

This document, together with the concepts and designs presented herein, is intended only for the specific purpose and client for which it was prepared. Reuse of and improper reliance on the documents without written authorization and adaptation by Kimley-Horn and Associates, Inc. shall be without liability to Kimley-Horn and Associates, Inc.



**FOREST COVE  
TRAFFIC CALMING  
NASHVILLE, TN**

**DRAFT  
PRELIMINARY  
PLANS  
FOR REVIEW ONLY**

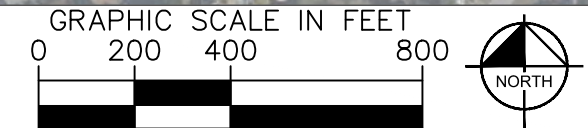
NO.	DATE	BY
1		
2		
3		
4		
5		
6		
7		
8		
9		
10		

REVISIONS

DESIGNED BY:	ALP
DRAWN BY:	EJW
CHECKED BY:	NDQT
DATE:	8/16/2022
KIMLEY-HORN PROJECT NO. 11800005	

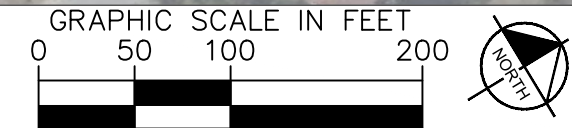


This document, together with the concepts and designs presented herein, is intended only for the specific purpose and client for which it was prepared. Release of and improper reliance on the documents without written authorization and adaptation by Kimley-Horn and Associates, Inc. shall be without liability to Kimley-Horn and Associates, Inc.



NO.	DATE	BY	REVISIONS
1			
2			
3			
4			
5			
6			
7			
8			
9			
10			

DESIGNED BY: ALP  
 DRAWN BY: EJV  
 CHECKED BY: NQJ  
 DATE: 8/16/2022  
 KIMLEY-HORN PROJECT NO. 11800005





SPEED CUSHION CONFIGURATION A  
35' EAST OF DRIVEWAY AT  
2612 FOREST VIEW DRIVE

SPEED CUSHION CONFIGURATION A  
20' EAST OF DRIVEWAY AT  
2653 FOREST VIEW DRIVE

**FOREST VIEW DRIVE**



**BARKSDALE LANE**

**WALNUT CREST DRIVE**

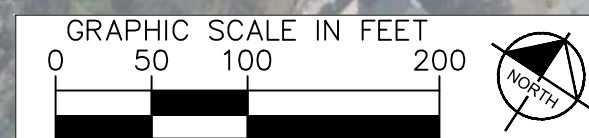
**KINWOOD DRIVE**

2612

2615

2653

2654

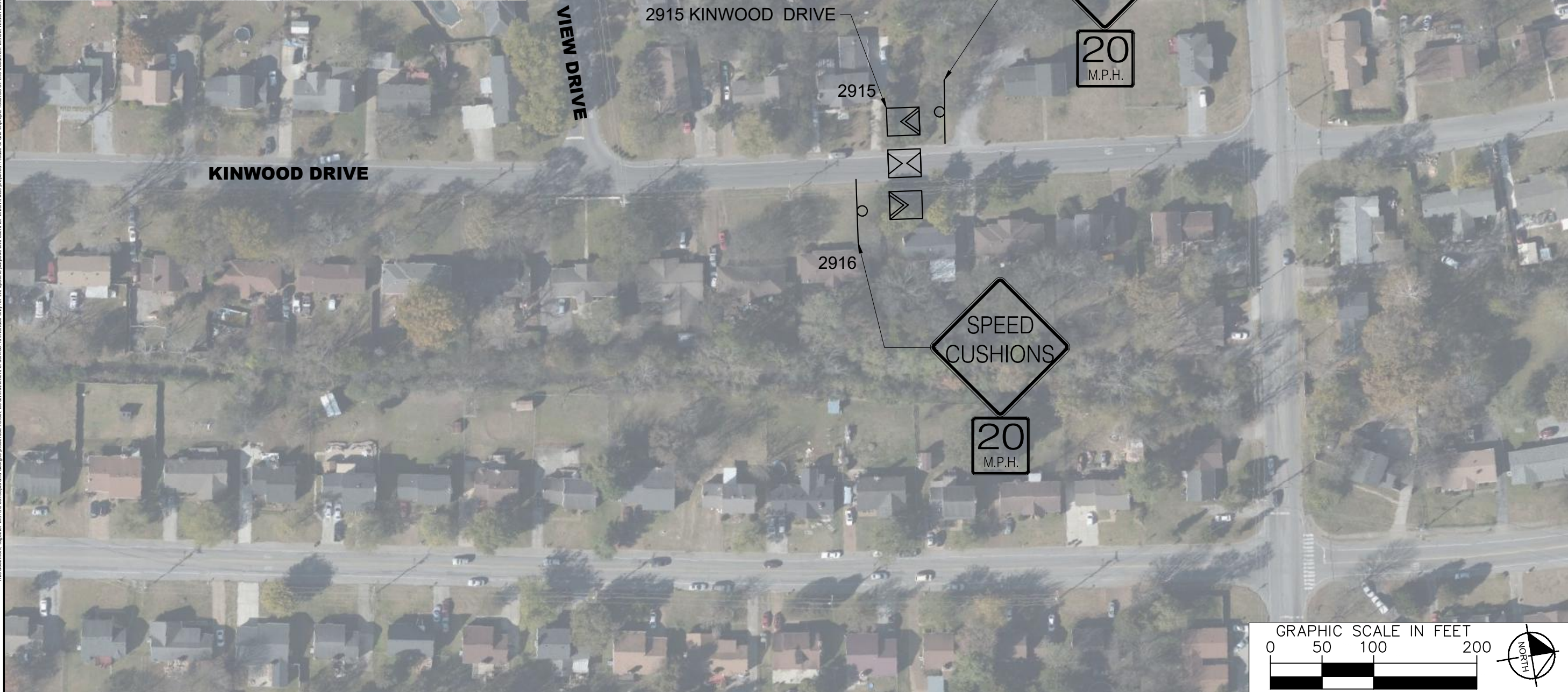


NO.	DATE	BY	REVISIONS
1			
2			
3			
4			
5			
6			
7			
8			
9			
10			

DESIGNED BY: ALP  
 DRAWN BY: EJV  
 CHECKED BY: NDQT  
 DATE: 8/16/2022  
 KIMLEY-HORN PROJECT NO. 11800005

This document, together with the concepts and designs presented herein, is intended only for the specific purpose and client for which it was prepared. Release of and improper reliance on this document without written authorization and adaptation by Kimley-Horn and Associates, Inc. shall be without liability to Kimley-Horn and Associates, Inc.

This document, together with the concepts and designs presented herein, is intended only for the specific purpose and client for which it was prepared. Release of and improper reliance on the documents without written authorization and adaptation by Kimley-Horn and Associates, Inc. shall be without liability to Kimley-Horn and Associates, Inc.



NO.	DATE	BY
1		
2		
3		
4		
5		
6		
7		
8		
9		
10		

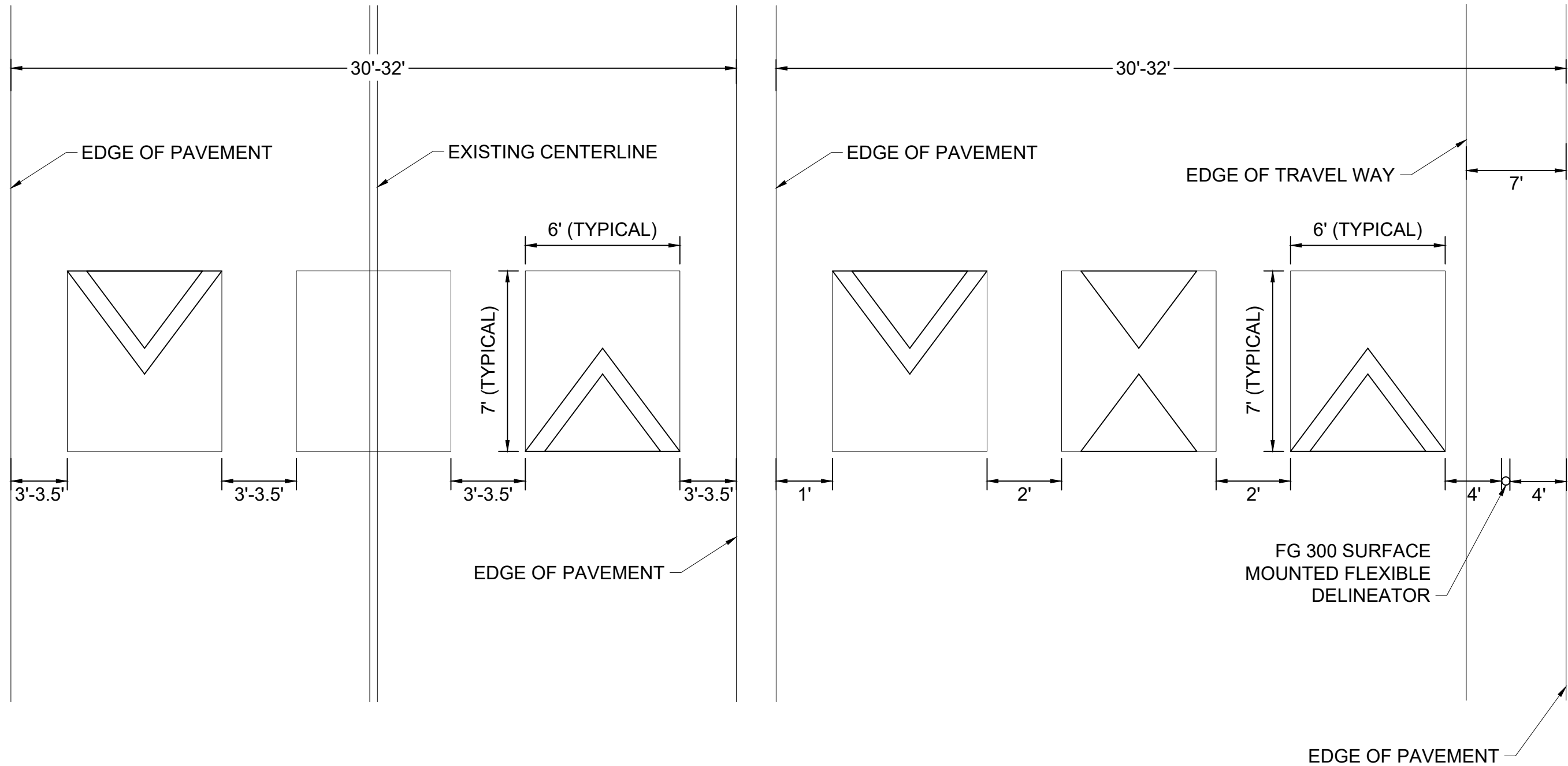
REVISIONS	DATE	BY

DESIGNED BY:	ALP
DRAWN BY:	EJW
CHECKED BY:	NDQT
DATE:	8/16/2022
KIMLEY-HORN PROJECT NO. 118000005	

CONFIGURATION A

CONFIGURATION B



NO.	DATE	BY
1		
2		
3		
4		
5		
6		
7		
8		
9		
10		

DESIGNED BY: ALP  
 DRAWN BY: EJM  
 CHECKED BY: NQQT  
 DATE: 8/16/2022  
 KIMLEY-HORN PROJECT NO. 118000005

CONCEPT PLAN

SHEET NUMBER  
**05**

This document, together with the concepts and designs presented herein, is intended only for the specific purpose and client for which it was prepared. Release of and improper reliance on the documents without written authorization and adaptation by Kimley-Horn and Associates, Inc. shall be without liability to Kimley-Horn and Associates, Inc.