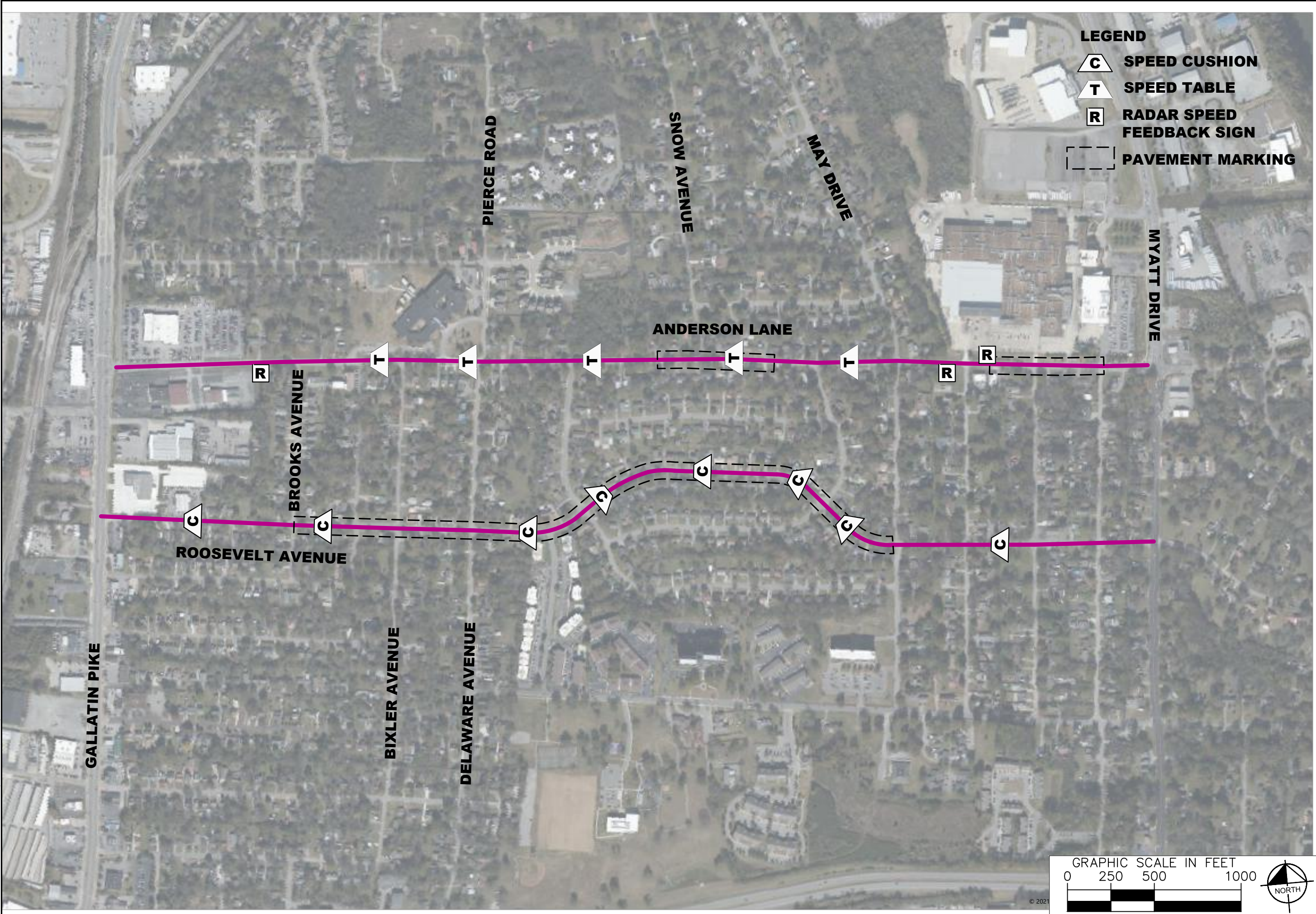


This document, together with the concepts and designs presented herein, is intended only for the specific purpose and client for which it was prepared. Reuse of and improper reliance on this document without written authorization and adaptation by Kimley-Horn and Associates, Inc. shall be without liability to Kimley-Horn and Associates, Inc.



**LEGEND**

- C** SPEED CUSHION
- T** SPEED TABLE
- R** RADAR SPEED FEEDBACK SIGN
- [Dashed Box]** PAVEMENT MARKING

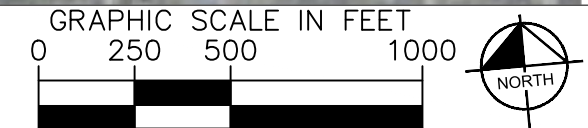


**ANDERSON / ROOSEVELT  
TRAFFIC CALMING  
NASHVILLE, TN**

**DRAFT  
PRELIMINARY  
PLANS  
FOR REVIEW ONLY**

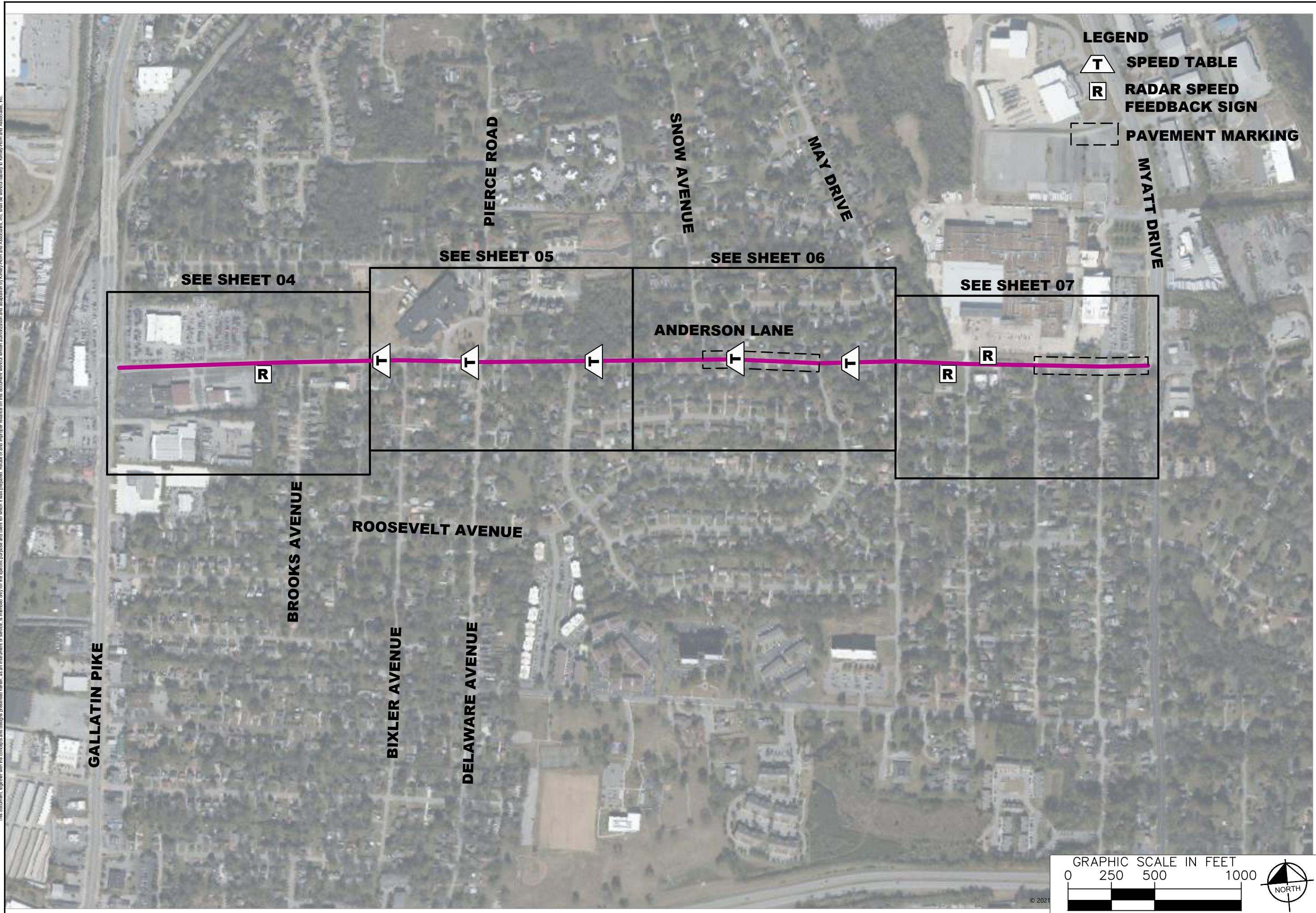
NO.	REVISIONS	DATE	BY
1			
2			
3			
4			
5			
6			
7			
8			
9			
10			

DESIGNED BY: ALB  
 DRAWN BY: E.J.W.  
 CHECKED BY: NDOT  
 DATE: 10/10/2022  
 KIMLEY-HORN PROJECT NO. 11850005



CONCEPT PLAN  
SHEET NUMBER  
**01**

This document, together with the concepts and designs presented herein, is intended only for the specific purpose and client for which it was prepared. Reuse of and improper reliance on this document without written authorization and adaptation by Kimley-Horn and Associates, Inc. shall be without liability to Kimley-Horn and Associates, Inc.



**LEGEND**

- SPEED TABLE**
- RADAR SPEED FEEDBACK SIGN**
- PAVEMENT MARKING**

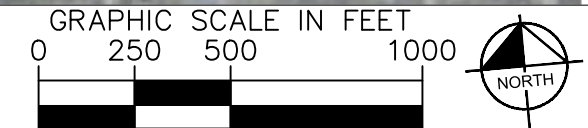


**ANDERSON / ROOSEVELT  
TRAFFIC CALMING**  
NASHVILLE, TN

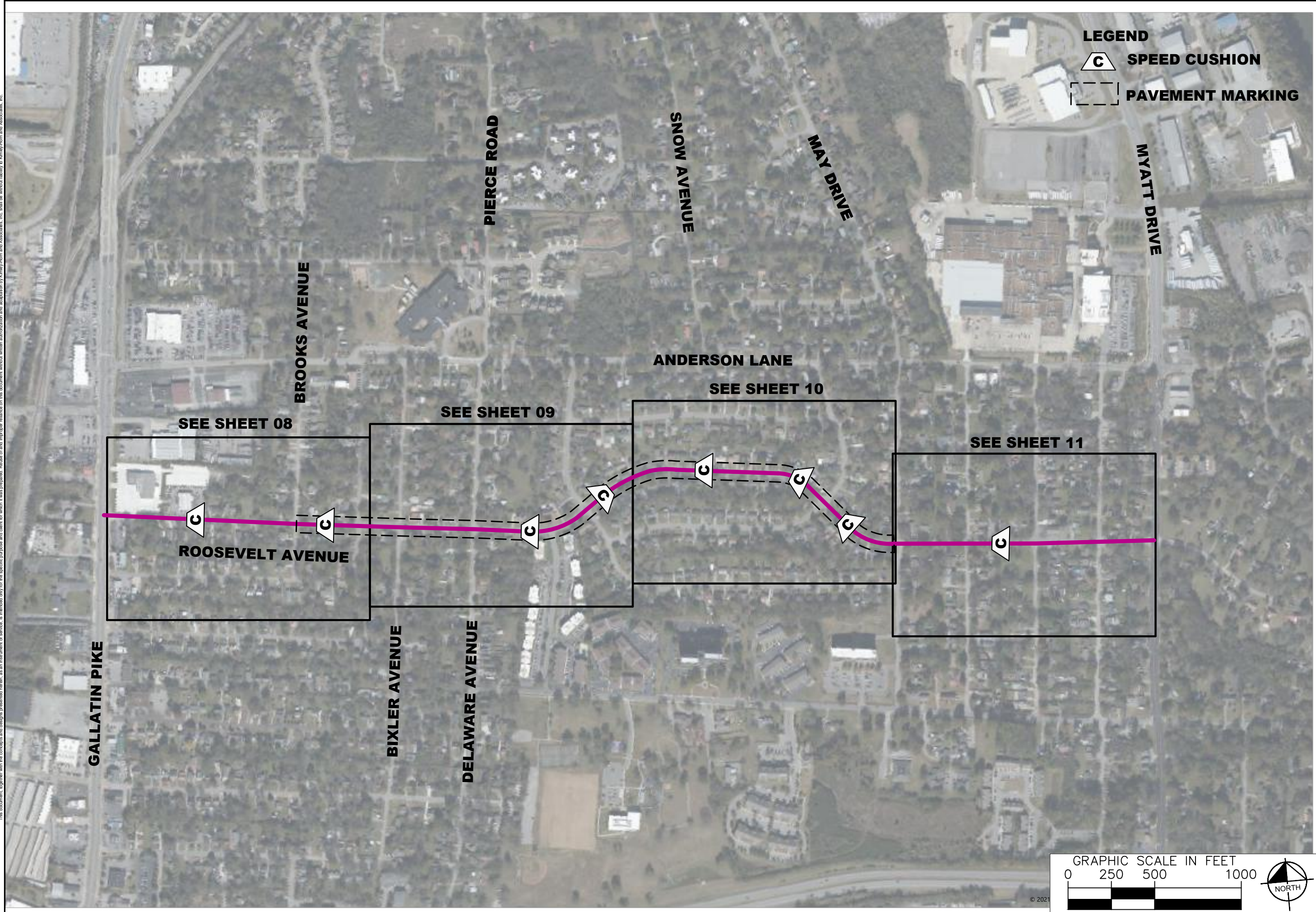
**DRAFT  
PRELIMINARY  
PLANS**  
FOR REVIEW ONLY

NO.	REVISIONS	DATE	BY
1			
2			
3			
4			
5			
6			
7			
8			
9			
10			

DESIGNED BY: ALB  
 DRAWN BY: E.J.W.  
 CHECKED BY: NDOT  
 DATE: 10/10/2022  
 KIMLEY-HORN PROJECT NO. 11850005



This document, together with the concepts and designs presented herein, is intended only for the specific purpose and client for which it was prepared. Reuse of and improper reliance on this document without written authorization and adaptation by Kimley-Horn and Associates, Inc. shall be without liability to Kimley-Horn and Associates, Inc.

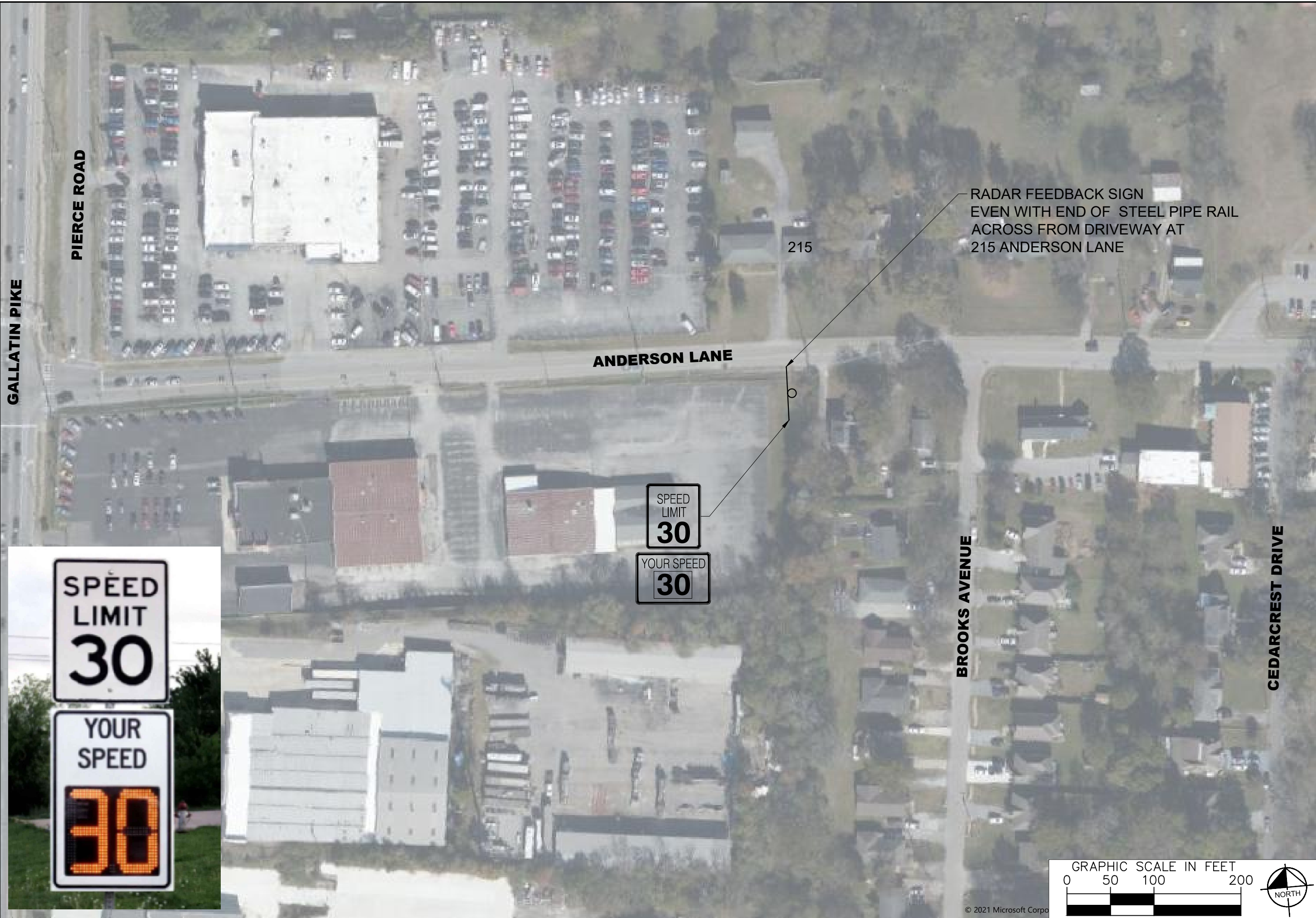


NO.	REVISIONS	DATE	BY
1			
2			
3			
4			
5			
6			
7			
8			
9			
10			

DESIGNED BY: ALB  
 DRAWN BY: E.J.W.  
 CHECKED BY: NDOT  
 DATE: 10/10/2022  
 KIMLEY-HORN PROJECT NO. 11850005

CONCEPT PLAN  
 SHEET NUMBER  
**03**

The document, together with the concepts and designs presented herein, is intended only for the specific purpose and client for which it was prepared. Reuse of and improper reliance on this document without written authorization and adaptation by Kimley-Horn and Associates, Inc. shall be without liability to Kimley-Horn and Associates, Inc.



**NDOT**

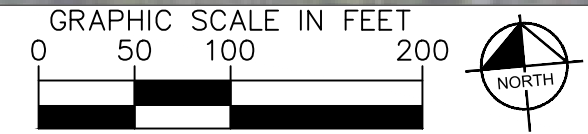
ANDERSON / ROOSEVELT  
TRAFFIC CALMING  
NASHVILLE, TN

DRAFT  
PRELIMINARY  
PLANS  
FOR REVIEW ONLY

REVISIONS	DATE	BY

No.	1	2	3	4	5	6	7	8	9	10
DESIGNED BY:	ALB									
DRAWN BY:	EJW									
CHECKED BY:	NDOT									
DATE:	10/10/2022									
KIMLEY-HORN PROJECT NO. 11850005										

CONCEPT PLAN  
SHEET NUMBER  
**04**



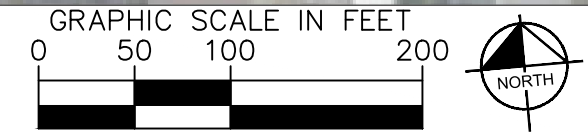
© 2021 Microsoft Corp

This document, together with the concepts and designs presented herein, is intended only for the specific purpose and client for which it was prepared. Reuse of and improper reliance on this document without written authorization and adaptation by Kimley-Horn and Associates, Inc. shall be without liability to Kimley-Horn and Associates, Inc.

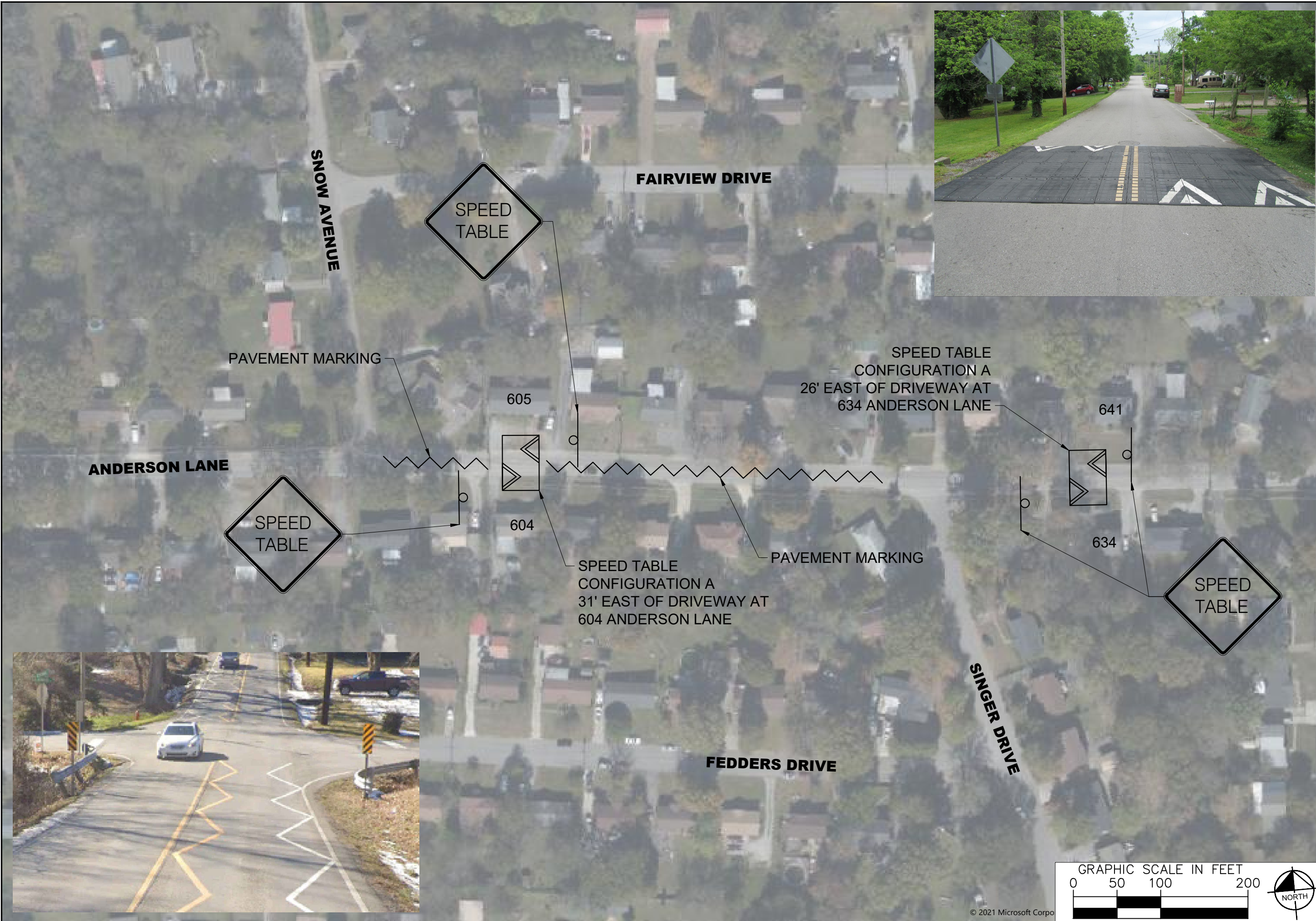


NO.	DATE	BY	REVISIONS
1			
2			
3			
4			
5			
6			
7			
8			
9			
10			

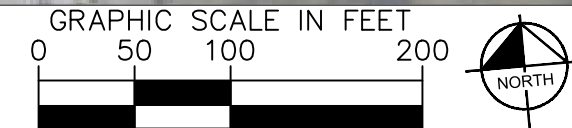
DESIGNED BY: ALB  
DRAWN BY: E.J.W.  
CHECKED BY: NDOT  
DATE: 10/10/2022  
KIMLEY-HORN PROJECT NO. 11850005



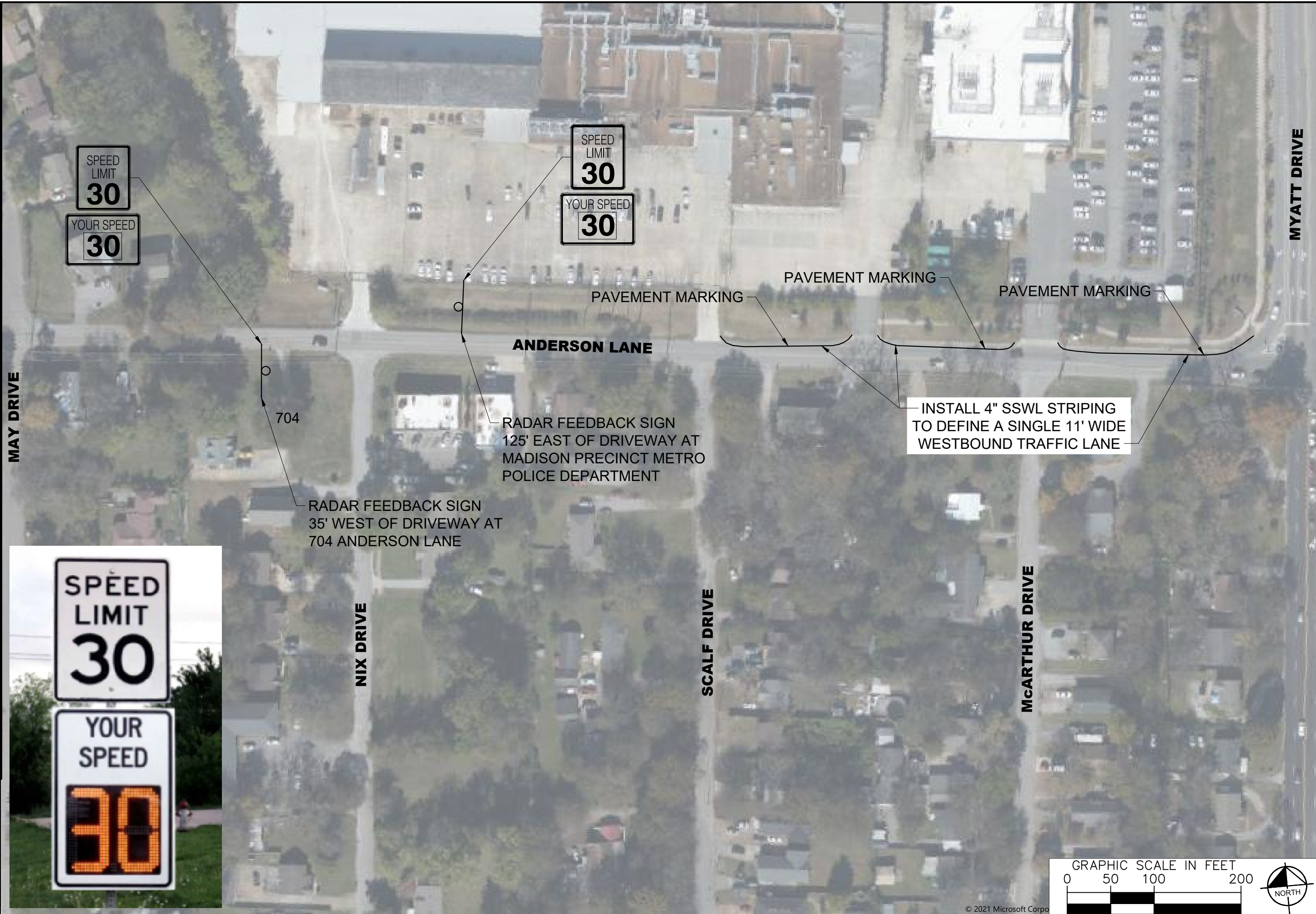
This document, together with the concepts and designs presented herein, is intended only for the specific purpose and client for which it was prepared. Reuse of and improper reliance on this document without written authorization and adaptation by Kimley-Horn and Associates, Inc. shall be without liability to Kimley-Horn and Associates, Inc.



NO.	DATE	BY	REVISIONS
1			
2			
3			
4			
5			
6			
7			
8			
9			
10			

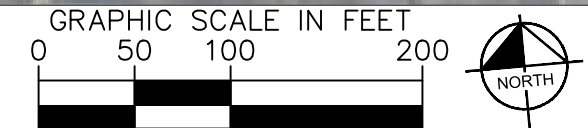


The document, together with the concepts and designs presented herein, is intended only for the specific purpose and client for which it was prepared. Reuse of and improper reliance on this document without written authorization and adaptation by Kimley-Horn and Associates, Inc. shall be without liability to Kimley-Horn and Associates, Inc.



NO.	REVISIONS	DATE	BY
1			
2			
3			
4			
5			
6			
7			
8			
9			
10			

DESIGNED BY: ALB  
 DRAWN BY: E.J.W.  
 CHECKED BY: NDOT  
 DATE: 10/10/2022  
 KIMLEY-HORN PROJECT NO. 11850005



GALLATIN PIKE

BROOKS AVENUE

CEDARCREST DRIVE

BEGIN PAVEMENT MARKING  
NARROWING AT BROOKS AVENUE  
(SEE SHEET 13)

SPEED CUSHION  
CONFIGURATION B  
34' WEST OF DRIVEWAY AT  
208 ROOSEVELT AVENUE



208



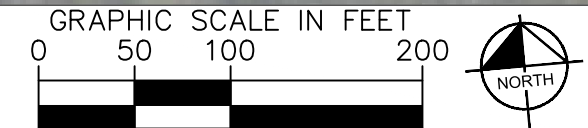
SPEED CUSHION  
CONFIGURATION C  
EVEN WITH POLE #05743101  
ACROSS FROM  
310 ROOSEVELT AVENUE



310



GARNER AVENUE



**NDOT**

ANDERSON / ROOSEVELT  
TRAFFIC CALMING  
NASHVILLE, TN

DRAFT  
PRELIMINARY  
PLANS  
FOR REVIEW ONLY

NO.	DATE	BY
1		
2		
3		
4		
5		
6		
7		
8		
9		
10		

DESIGNED BY: ALB  
DRAWN BY: E.J.W.  
CHECKED BY: NDOT  
DATE: 10/19/2022  
KIMLEY-HORN PROJECT NO. 11850005

CONCEPT PLAN  
SHEET NUMBER  
**08**

The document, together with the concepts and designs presented herein, is intended only for the specific purpose and client for which it was prepared. Reuse of and improper reliance on the documents without written authorization and adaptation by Kimley-Horn and Associates, Inc. shall be without liability to Kimley-Horn and Associates, Inc.



This document, together with the concepts and designs presented herein, is intended only for the specific purpose and client for which it was prepared. Reuse of and improper reliance on this document without written authorization and adaptation by Kimley-Horn and Associates, Inc. shall be without liability to Kimley-Horn and Associates, Inc.



NO.	DATE	BY	REVISIONS
1			
2			
3			
4			
5			
6			
7			
8			
9			
10			

DESIGNED BY: ALB  
DRAWN BY: E.J.W.  
CHECKED BY: NDOT  
DATE: 10/10/2022  
KIMLEY-HORN PROJECT NO. 11850005

NO.	DATE	BY	REVISIONS
1			
2			
3			
4			
5			
6			
7			
8			
9			
10			

**FEDDERS DRIVE**

**ROOSEVELT AVENUE**

**SINGER DRIVE**

SPEED CUSHION  
CONFIGURATION C  
27' WEST OF DRIVEWAY AT  
538 ROOSEVELT AVENUE

SPEED  
CUSHION

20  
M.P.H.

SPEED  
CUSHION

20  
M.P.H.

SPEED CUSHION  
CONFIGURATION C  
31' EAST OF DRIVEWAY AT  
629 ROOSEVELT AVENUE

SPEED  
CUSHION

20  
M.P.H.

SPEED CUSHION  
CONFIGURATION C  
28' WEST OF DRIVEWAY AT  
648 ROOSEVELT AVENUE

END PAVEMENT MARKING  
NARROWING AT MAY DRIVE  
(SEE SHEET 13)

539

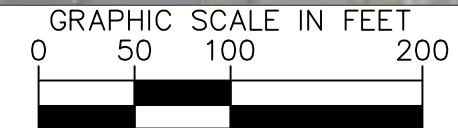
538

629

556

645

648



This document, together with the concepts and designs presented herein, is intended only for the specific purpose and client for which it was prepared. Reuse of and improper reliance on this document without written authorization and adaptation by Kimley-Horn and Associates, Inc. shall be without liability to Kimley-Horn and Associates, Inc.

MAY DRIVE

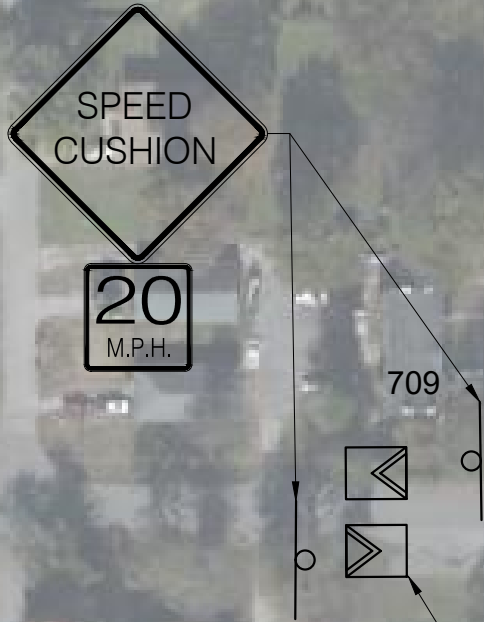
NIX DRIVE

SCALF DRIVE

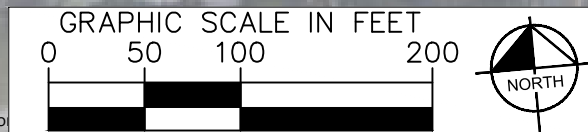
MAYATT DRIVE

MCARTHUR DRIVE

ROOSEVELT AVENUE



SPEED CUSHION CONFIGURATION C  
64' EAST OF DRIVEWAY  
AT 226 NIX DRIVE



**NDOT**

ANDERSON / ROOSEVELT  
TRAFFIC CALMING  
NASHVILLE, TN

DRAFT  
PRELIMINARY  
PLANS  
FOR REVIEW ONLY

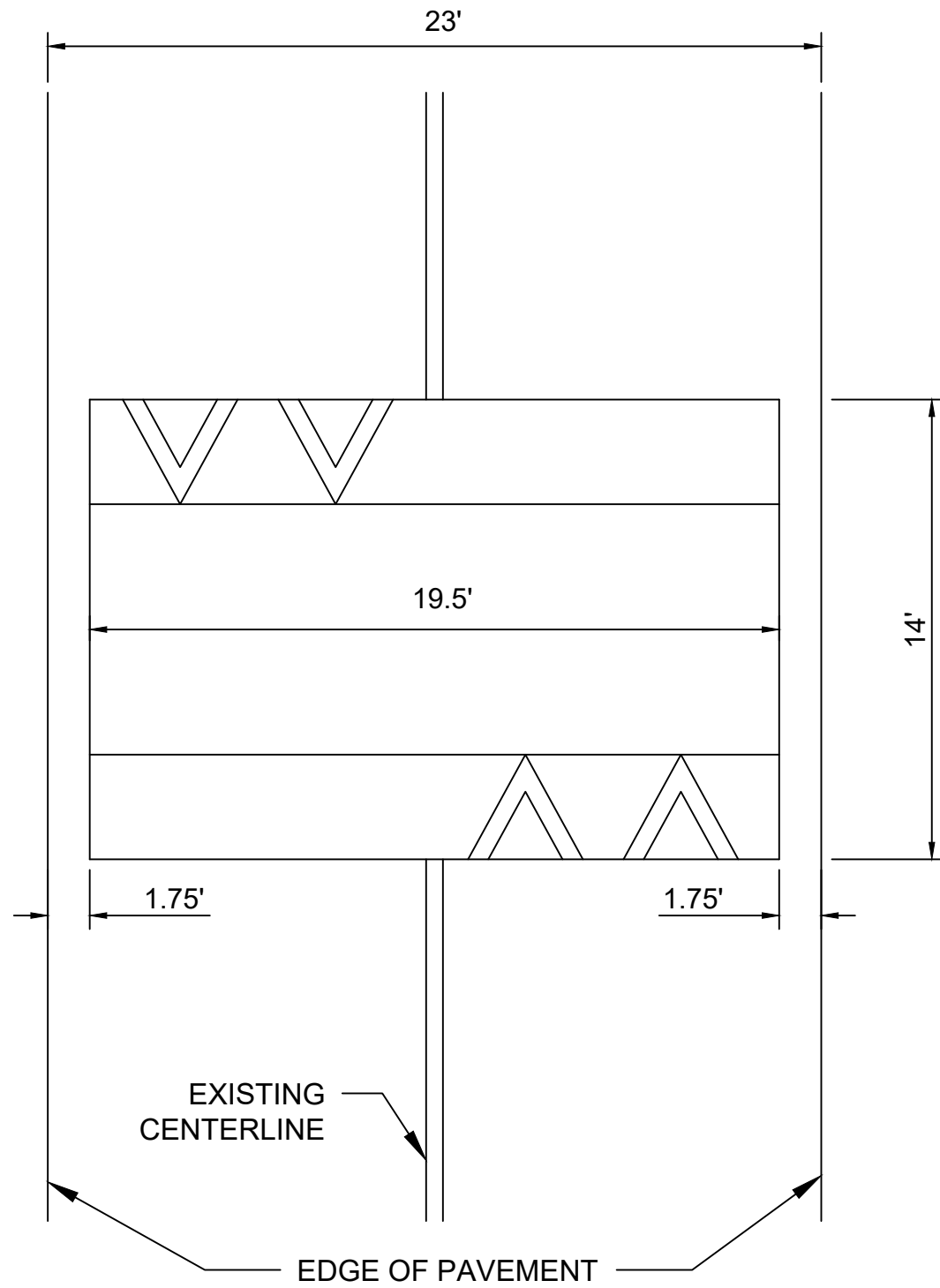
NO.	DATE	BY	REVISIONS
1			
2			
3			
4			
5			
6			
7			
8			
9			
10			

DESIGNED BY: ALB  
 DRAWN BY: E.J.W.  
 CHECKED BY: NDOT  
 DATE: 10/10/2022  
 KIMLEY-HORN PROJECT NO. 11850005

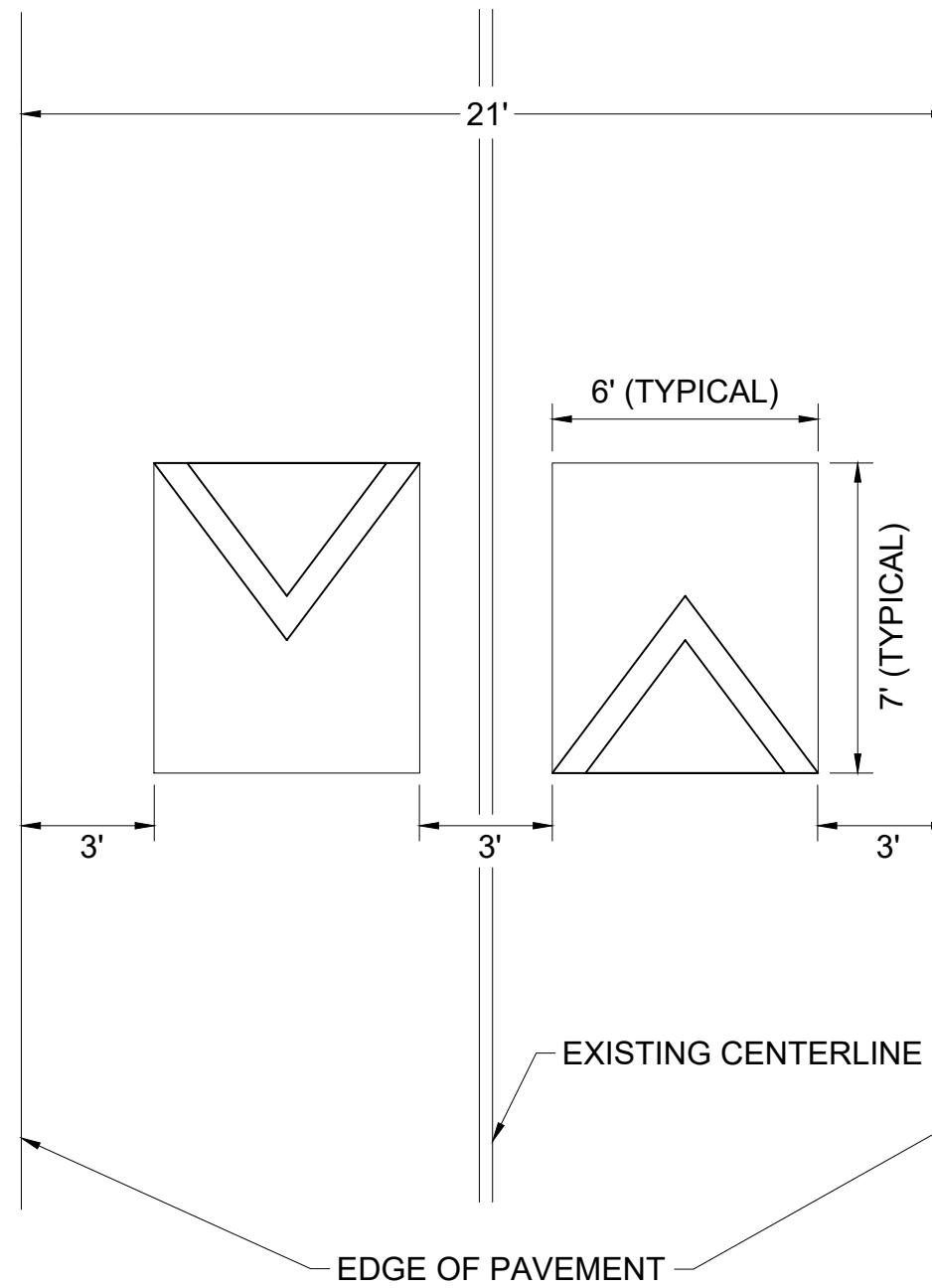
CONCEPT PLAN  
 SHEET NUMBER  
**11**

This document, together with the concepts and designs presented herein, is intended only for the specific purpose and client for which it was prepared. Reuse of and improper reliance on this document without written authorization and adaptation by Kimley-Horn and Associates, Inc. shall be without liability to Kimley-Horn and Associates, Inc.

**SPEED TABLE: CONFIGURATION A**



**SPEED CUSHION: CONFIGURATION B**

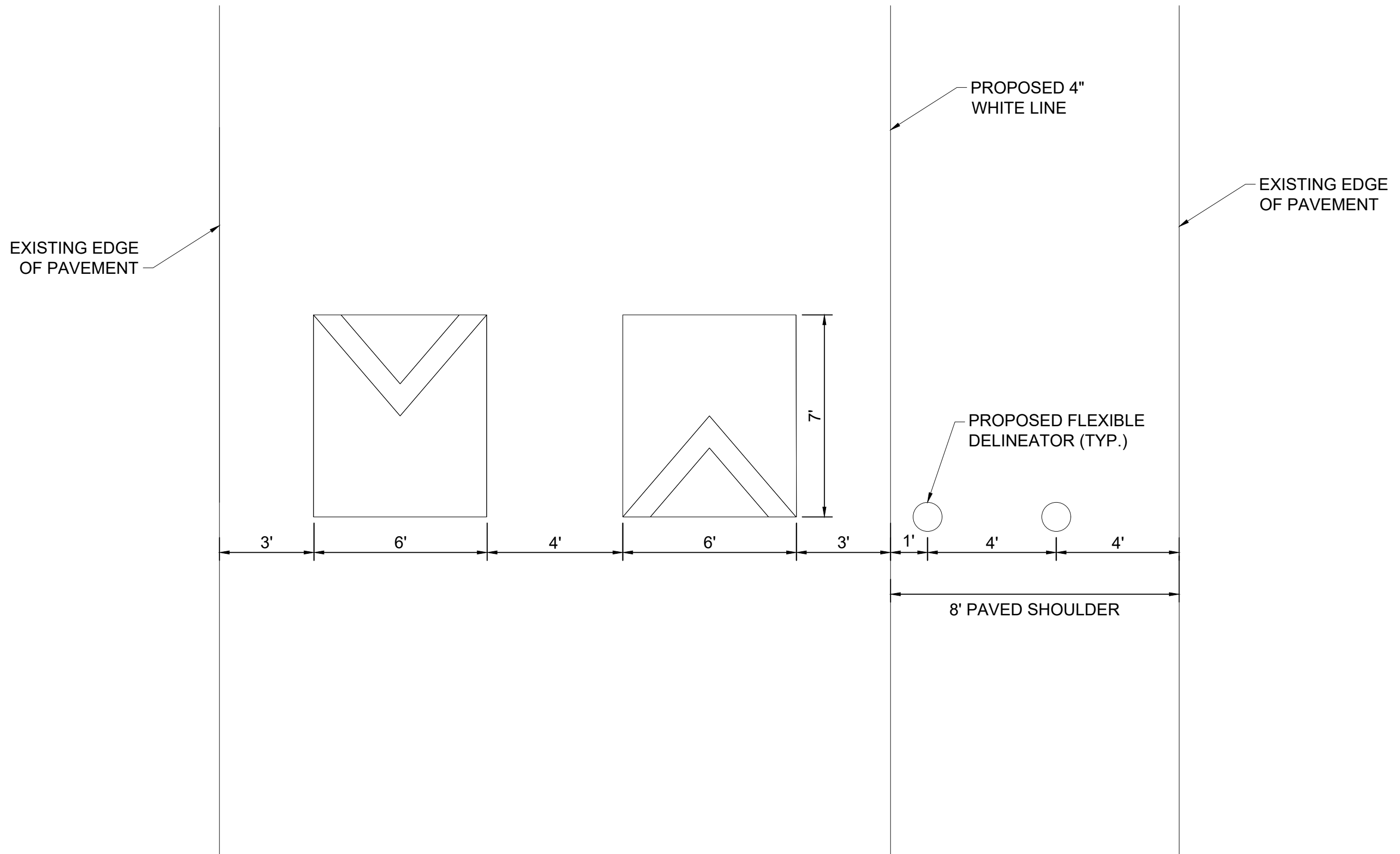


NO.	BY	DATE	REVISIONS
1			
2			
3			
4			
5			
6			
7			
8			
9			
10			

DESIGNED BY:	ALB
DRAWN BY:	EJW
CHECKED BY:	NDOT
DATE:	10/19/2022
KIMLEY-HORN PROJECT NO. 11850005	

DETAIL
SHEET NUMBER <b>12</b>

**ROOSEVELT AVENUE: PAVEMENT MARKING  
NARROWING AND SPEED CUSHION CONFIGURATION C**



NO.	DATE	BY
1		
2		
3		
4		
5		
6		
7		
8		
9		
10		

DESIGNED BY:	ALB
DRAWN BY:	EJW
CHECKED BY:	NDOT
DATE:	10/10/2022
KIMLEY-HORN PROJECT NO. 11850005	

DETAIL

SHEET NUMBER  
**13**

This document, together with the concepts and designs presented herein, is intended only for the specific purpose and client for which it was prepared. Reuse of and improper reliance on this document without written authorization and adaptation by Kimley-Horn and Associates, Inc. shall be without liability to Kimley-Horn and Associates, Inc.