

This document, together with the concepts and designs presented herein, as an instrument of service, is intended only for the specific purpose and client for which it was prepared. Reuse of and improper reliance on this document without written authorization and adaptation by Kimley-Horn and Associates, Inc. shall be without liability to Kimley-Horn and Associates, Inc.

ESTIMATED QUANTITIES	
SPEED CUSHIONS	
6' X 10.5' SPEED CUSHION WITH ONE ARROW	16
6' X 10.5' SPEED CUSHION WITH TWO ARROWS	8
6' X 14' SPEED CUSHION WITH ONE ARROW	10
SIGNS	
W17-1 (VAR.) "SPEED CUSHION" SIGN (30" X 30")	18
W17-1 (VAR.) "SPEED CUSHIONS AHEAD" SIGN (30" X 30")	4
W13-1P "20 M.P.H" SIGN (18" X 18")	18
W13-1P "25 M.P.H" SIGN (18" X 18")	8
DELINEATORS	
4" WHITE DELINEATOR	10

LEGEND

 **SPEED CUSHION**

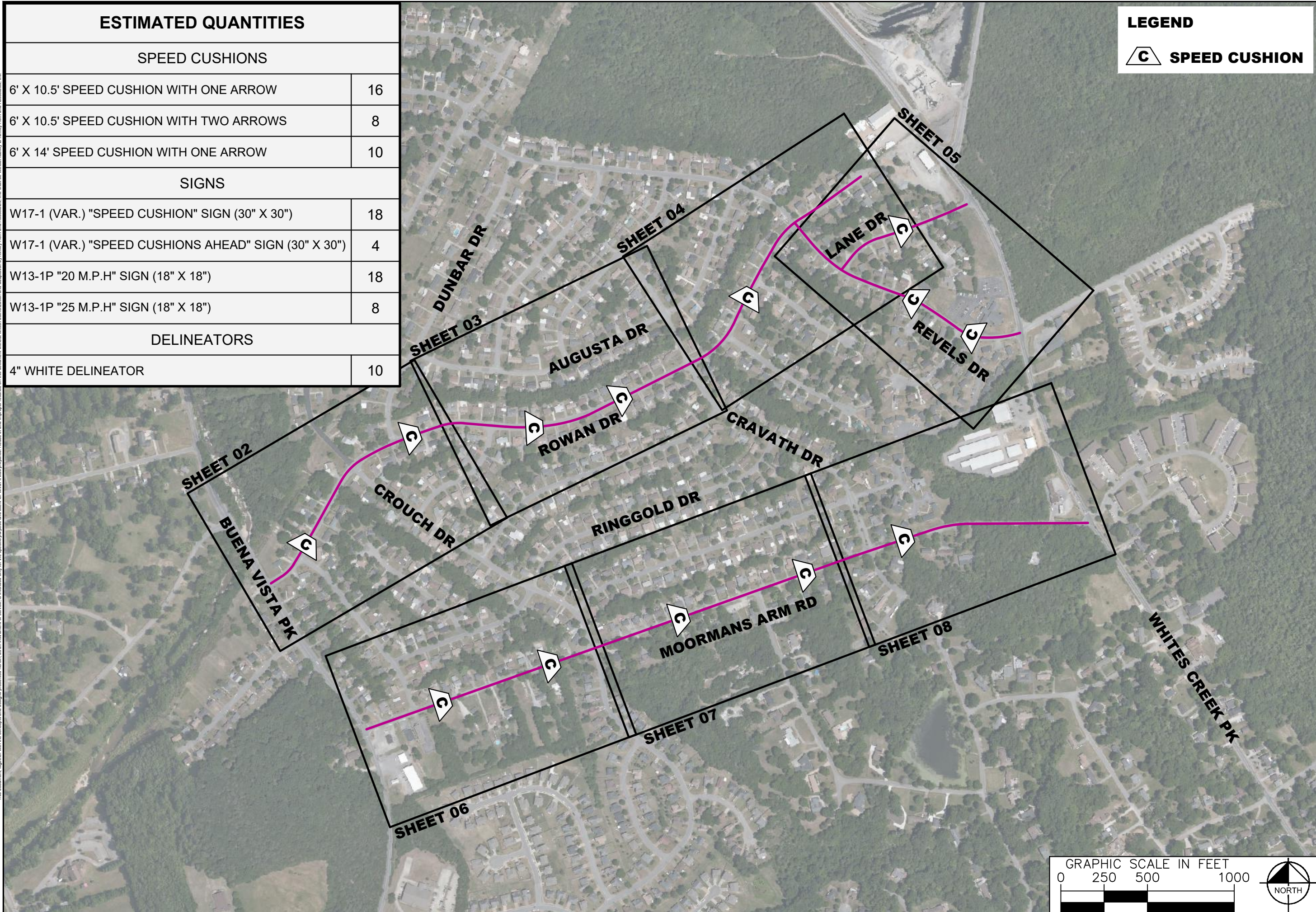


HAYNES MANOR
TRAFFIC CALMING
NASHVILLE, TN



DESIGNED BY:	JH
DRAWN BY:	EMT
CHECKED BY:	NDOT
DATE:	12/7/2022
KIMLEY-HORN PROJECT NO.	11880005

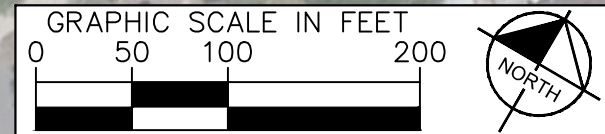
KEY
SHEET NUMBER
01





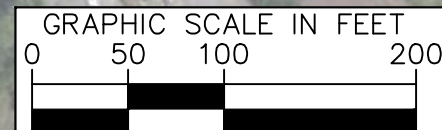
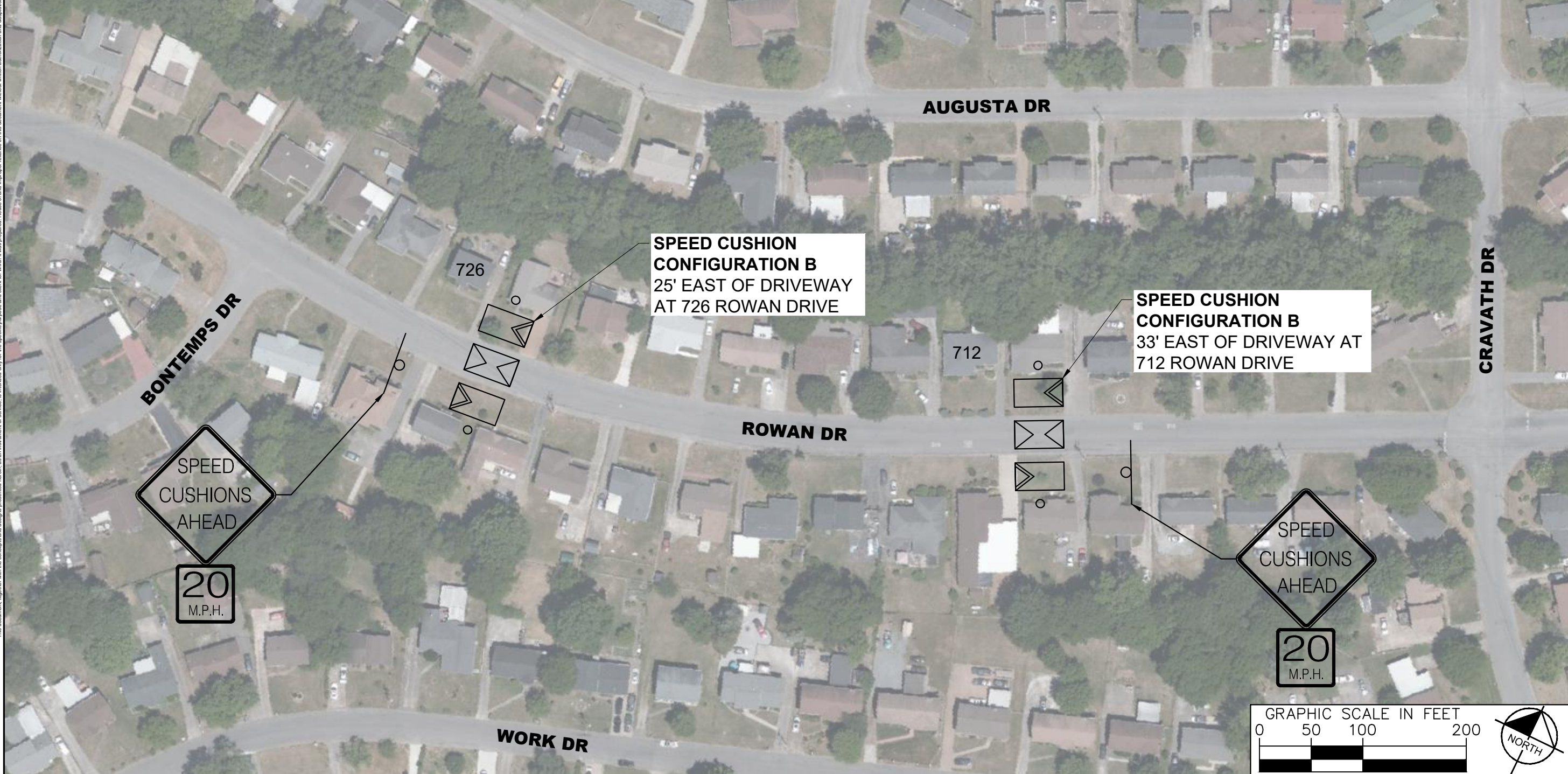
**SPEED CUSHION
CONFIGURATION B**
32' WEST OF DRIVEWAY
AT 784 ROWAN DRIVE

**SPEED CUSHION
CONFIGURATION B**
74' WEST OF DRIVEWAY AT
747 ROWAN DRIVE



DESIGNED BY:	JH
DRAWN BY:	EMT
CHECKED BY:	NDOT
DATE:	12/7/2022
KIMLEY-HORN PROJECT NO.	11890005

CONCEPT PLAN
SHEET NUMBER
02



This document, together with the concepts and designs presented herein, is intended only for the specific purpose and client for which it was prepared. Reuse of and improper reliance on this document without written authorization and adaptation by Kimley-Horn and Associates, Inc. shall be without liability to Kimley-Horn and Associates, Inc.

This document, together with the concepts and designs presented herein, is intended only for the specific purpose and client for which it was prepared. Reuse of and improper reliance on this document without written authorization and adaptation by Kimley-Horn and Associates, Inc. shall be without liability to Kimley-Horn and Associates, Inc.



NDOT

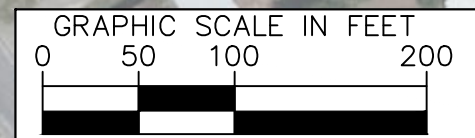
**HAYNES MANOR
TRAFFIC CALMING**
NASHVILLE, TN



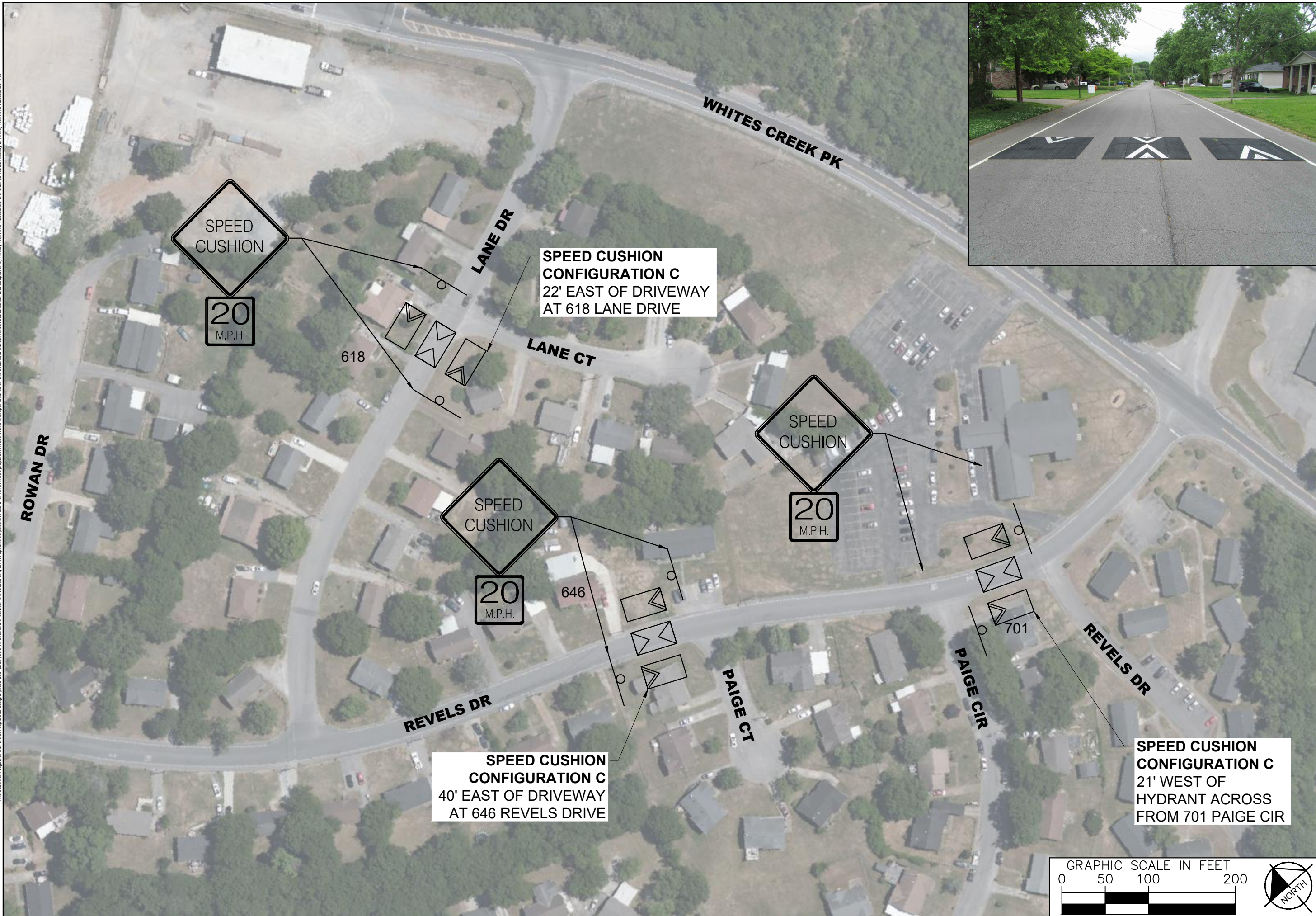
DESIGNED BY: JH
DRAWN BY: EMT
CHECKED BY: NDOT
DATE: 12/7/2022
KIMLEY-HORN PROJECT NO. 11890005

CONCEPT PLAN

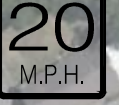
SHEET NUMBER
04



This document, together with the concepts and designs presented herein, is intended only for the specific purpose and client for which it was prepared. Reuse or improper reliance on this document without written authorization and adaptation by Kimley-Horn and Associates, Inc. shall be without liability to Kimley-Horn and Associates, Inc.



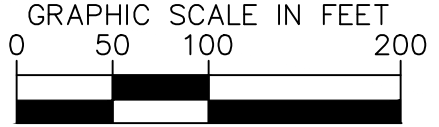
SPEED CUSHION CONFIGURATION C
22' EAST OF DRIVEWAY
AT 618 LANE DRIVE



SPEED CUSHION CONFIGURATION C
40' EAST OF DRIVEWAY
AT 646 REVELS DRIVE



SPEED CUSHION CONFIGURATION C
21' WEST OF HYDRANT
ACROSS FROM 701 PAIGE CIR



NDOT

HAYNES MANOR
TRAFFIC CALMING
NASHVILLE, TN



DESIGNED BY: JH
DRAWN BY: EMT
CHECKED BY: NDOT
DATE: 12/7/2022
KIMLEY-HORN PROJECT NO. 11890005

CONCEPT PLAN
SHEET NUMBER
05





**SPEED CUSHION
CONFIGURATION A**
37' WEST OF DRIVEWAY AT
716 MOORMANS ARM ROAD

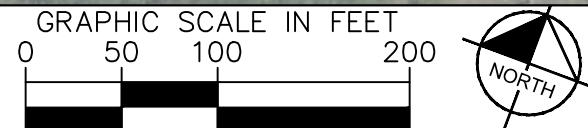
**SPEED CUSHION
CONFIGURATION A**
38' WEST OF DRIVEWAY AT
654 MOORMANS ARM ROAD

SPEED
CUSHION

25
M.P.H.

SPEED
CUSHION

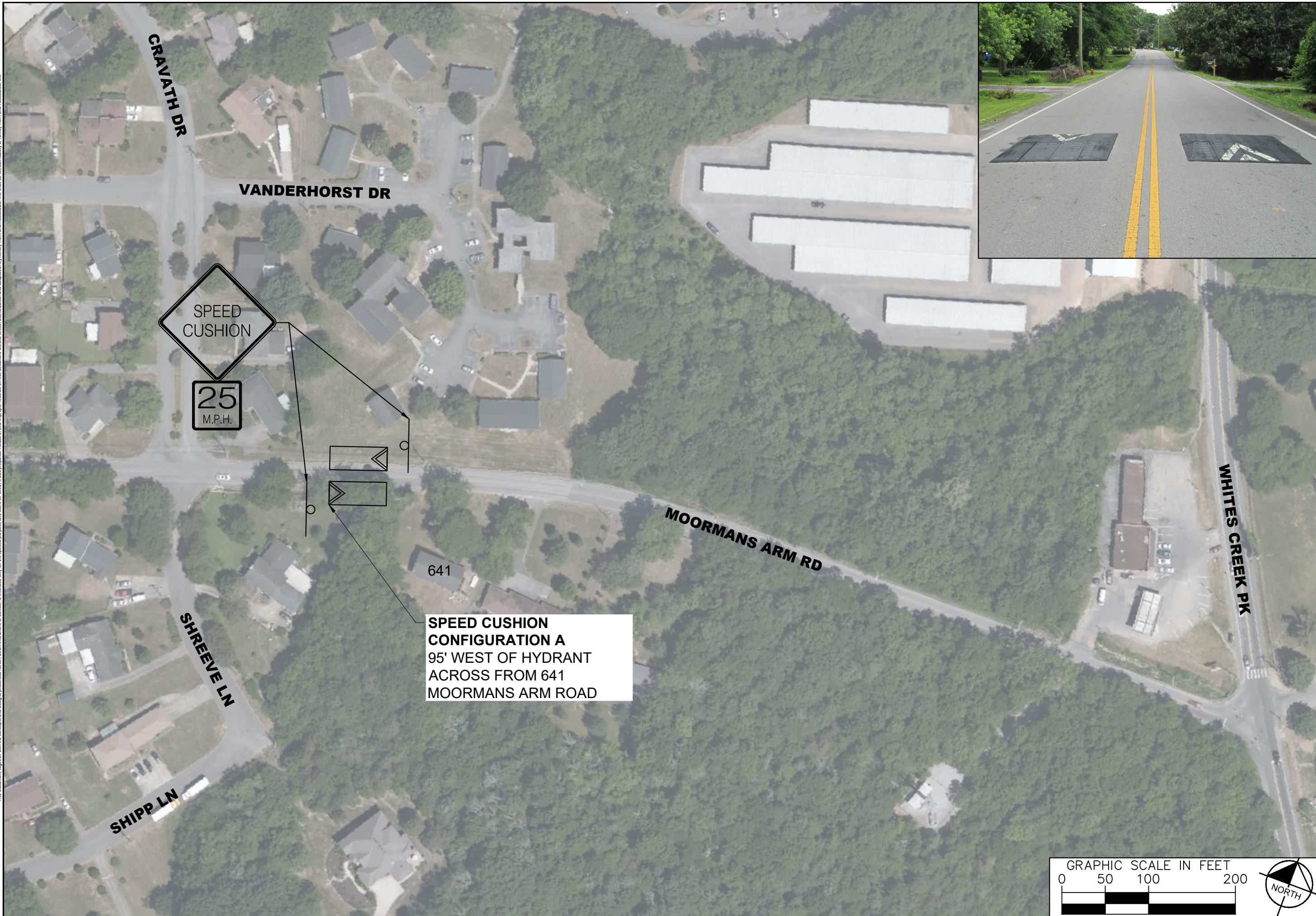
25
M.P.H.



DESIGNED BY:	JH
DRAWN BY:	EMT
CHECKED BY:	NDOT
DATE:	12/7/2022
KIMLEY-HORN PROJECT NO.:	11890005

This document, together with the concepts and designs presented herein, is intended only for the specific purpose and client for which it was prepared. Reuse of and improper reliance on this document without written authorization and adaptation by

This document, together with the concepts and designs presented herein, is intended only for the specific purpose and client for which it was prepared. Reuse of and improper reliance on this document without written authorization and adaptation by Kimley-Horn and Associates, Inc. shall be without liability to Kimley-Horn and Associates, Inc.



SPEED CUSHION CONFIGURATION A
95' WEST OF HYDRANT
ACROSS FROM 641
MOORMANS ARM ROAD

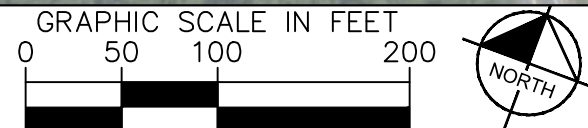


NDOT

**HAYNES MANOR
TRAFFIC CALMING**
NASHVILLE, TN



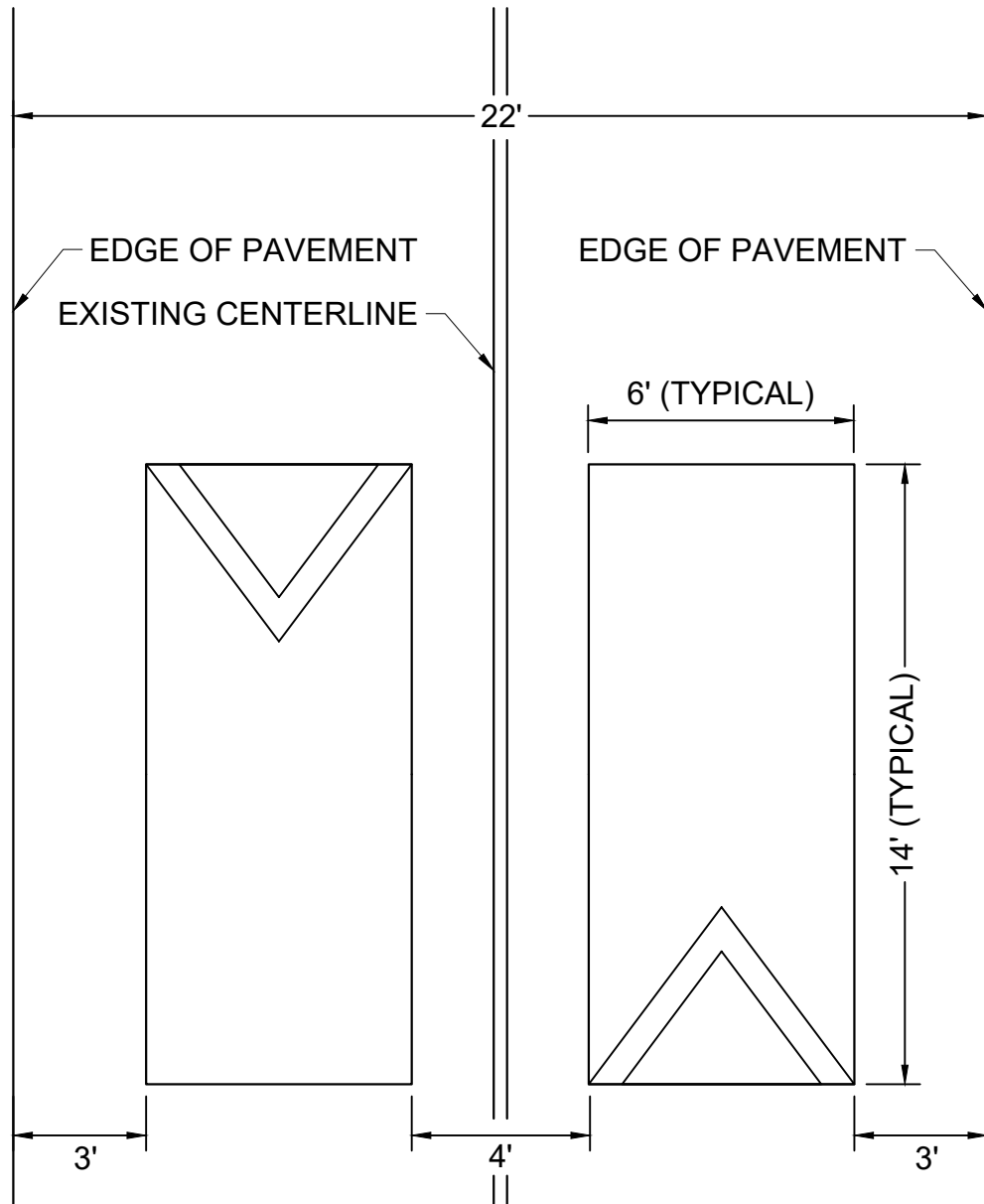
DESIGNED BY:	JH
DRAWN BY:	EMT
CHECKED BY:	NDOT
DATE:	12/7/2022
KIMLEY-HORN PROJECT NO.:	11890005



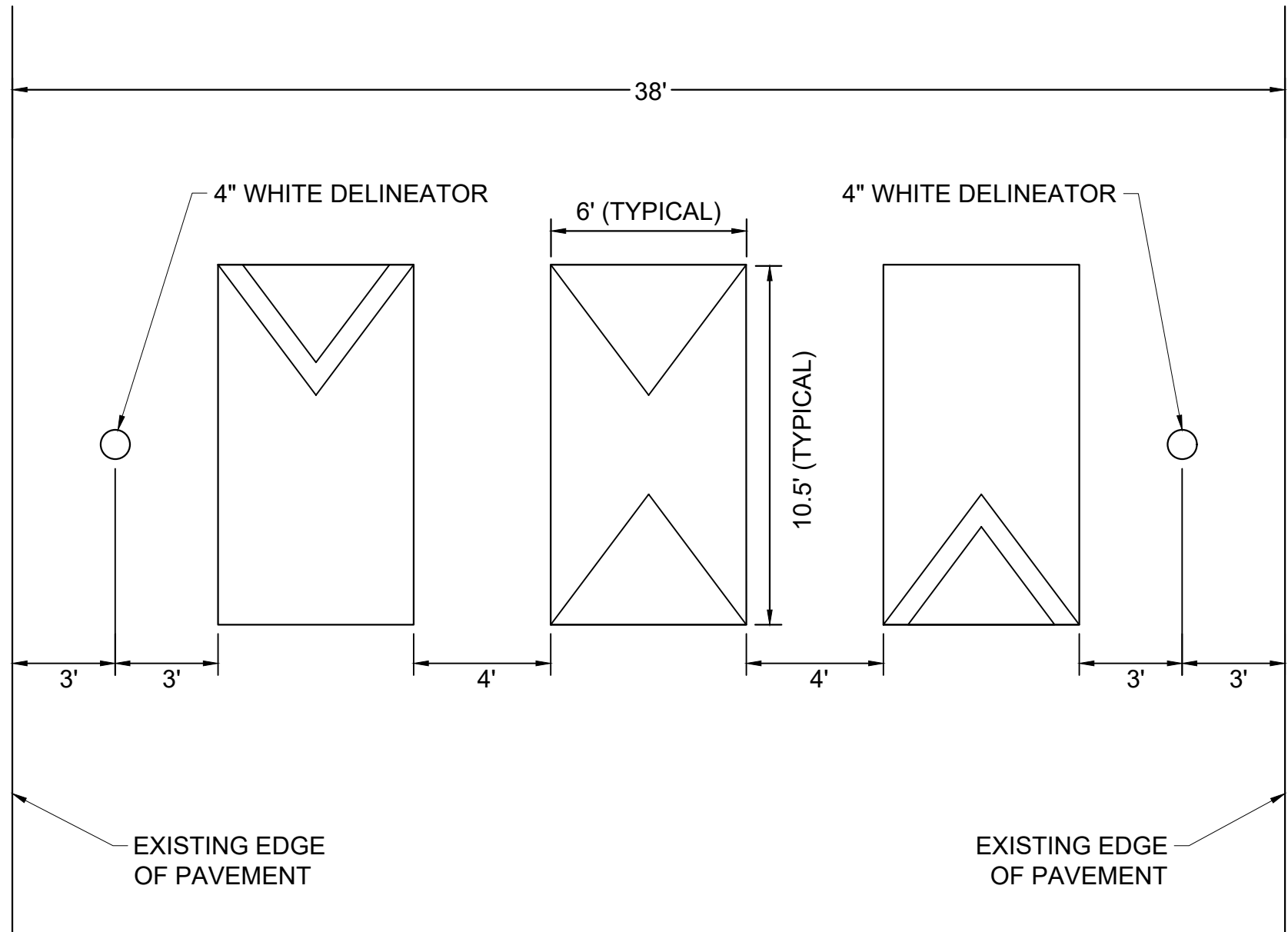
CONCEPT PLAN
SHEET NUMBER
08

This document, together with the concepts and designs presented herein, as an instrument of service, is intended only for the specific purpose and client for which it was prepared. Reuse of and improper reliance on this document without written authorization and adaptation by Kimley-Horn and Associates, Inc. shall be without liability to Kimley-Horn and Associates, Inc.

CONFIGURATION A



CONFIGURATION B



DESIGNED BY:	JH
DRAWN BY:	EMT
CHECKED BY:	NDOT
DATE:	12/7/2022
KIMLEY-HORN PROJECT NO.:	11880005

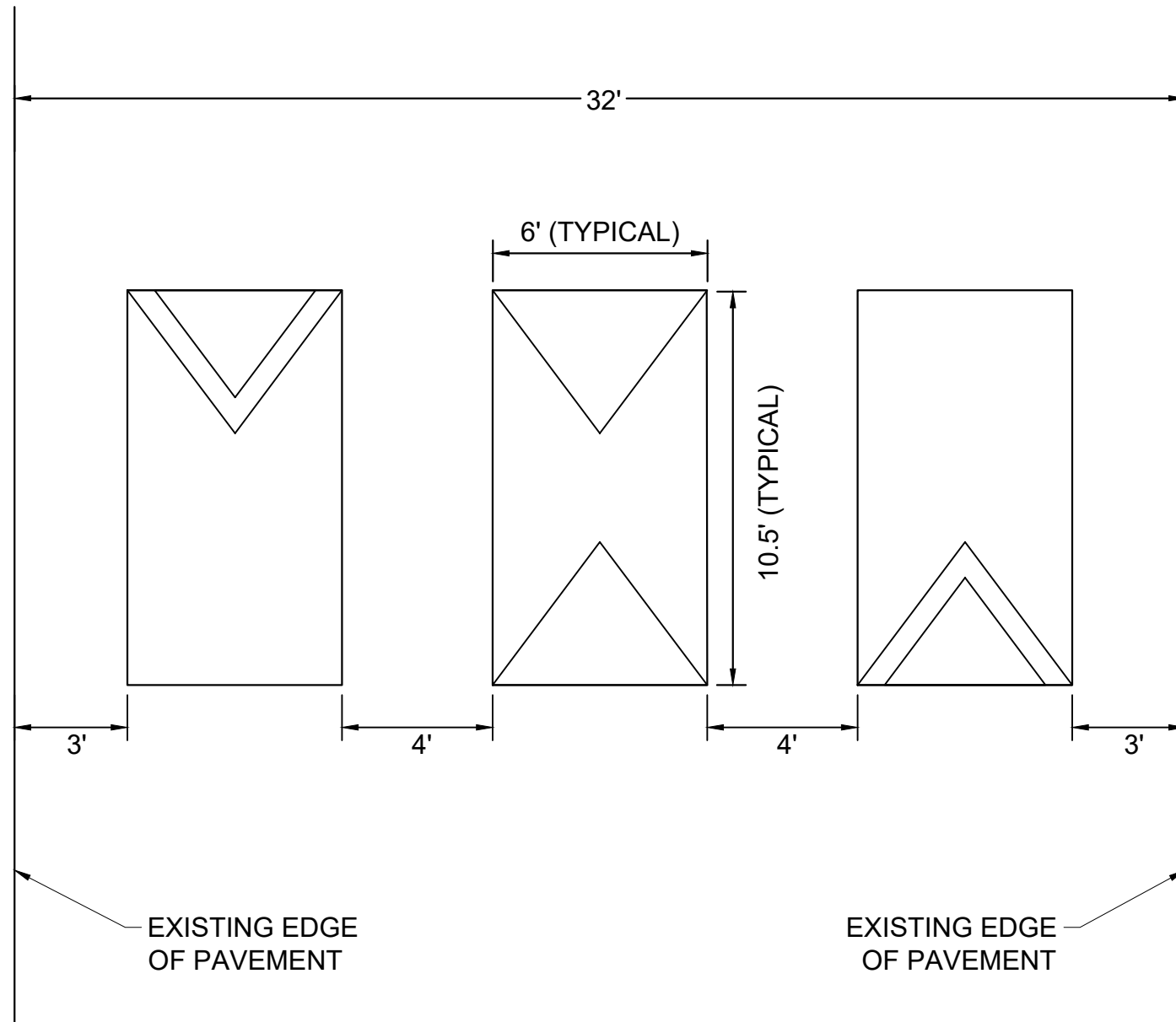
DETAIL

SHEET NUMBER

09

This document, together with the concepts and designs presented herein, as an instrument of service, is intended only for the specific purpose and client for which it was prepared. Reuse of and improper reliance on this document without written authorization and adaptation by Kimley-Horn and Associates, Inc. shall be without liability to Kimley-Horn and Associates, Inc.

CONFIGURATION C



HAYNES MANOR
TRAFFIC CALMING
NASHVILLE, TN



DESIGNED BY:	JH
DRAWN BY:	EMT
CHECKED BY:	NDOT
DATE:	12/7/2022
KIMLEY-HORN PROJECT NO.	11880005

DETAIL

SHEET NUMBER

10