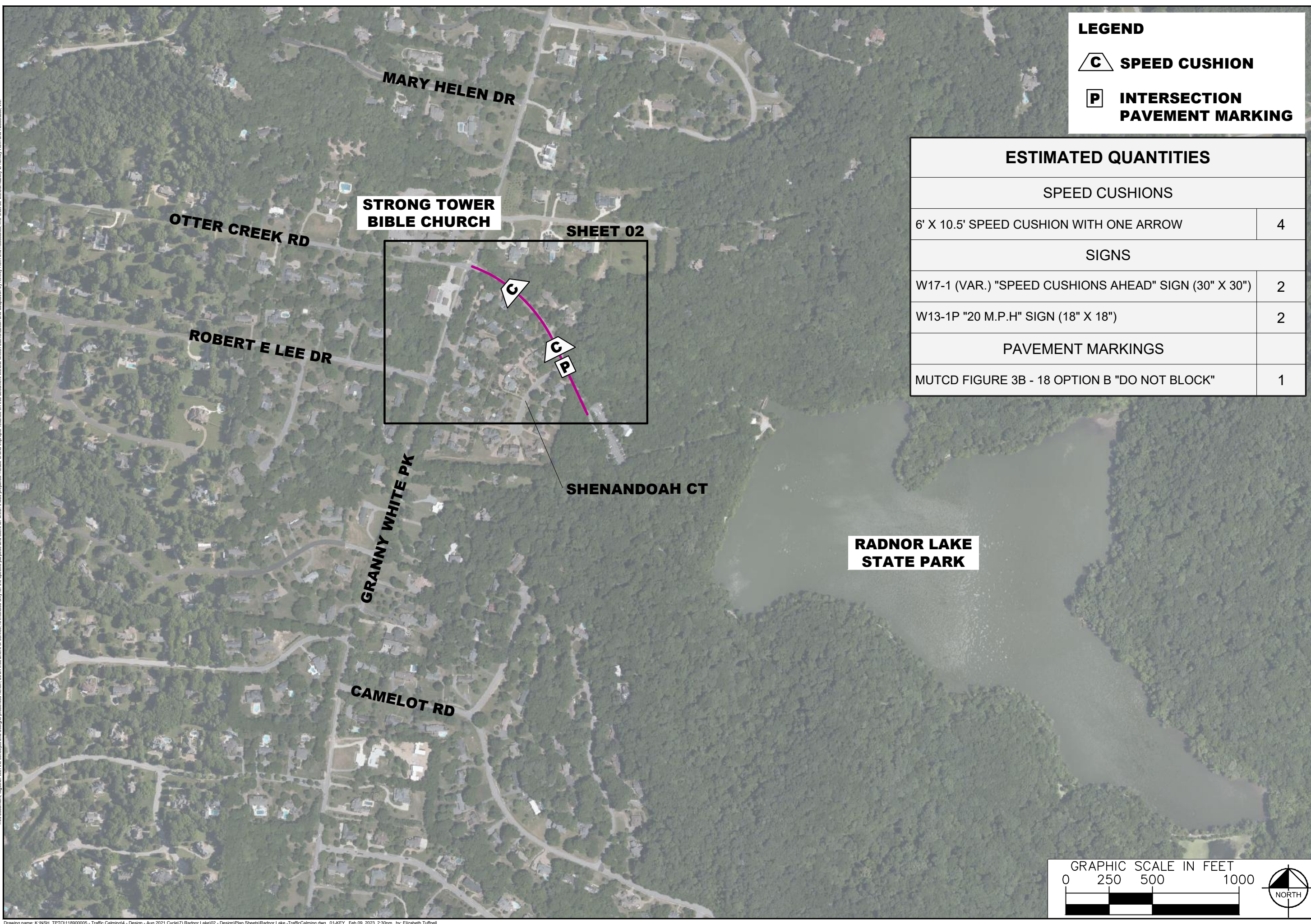


This document, together with the concepts and designs presented herein, as an instrument of service, is intended only for the specific purpose and client for which it was prepared. Reuse of and improper reliance on this document without written authorization and adaptation by Kimley-Horn and Associates, Inc. shall be without liability to Kimley-Horn and Associates, Inc.



LEGEND

 **SPEED CUSHION**

 **INTERSECTION PAVEMENT MARKING**

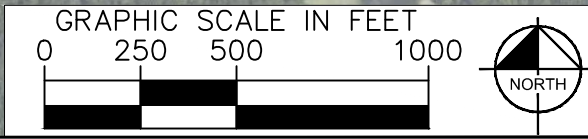
ESTIMATED QUANTITIES	
SPEED CUSHIONS	
6' X 10.5' SPEED CUSHION WITH ONE ARROW	4
SIGNS	
W17-1 (VAR.) "SPEED CUSHIONS AHEAD" SIGN (30" X 30")	2
W13-1P "20 M.P.H" SIGN (18" X 18")	2
PAVEMENT MARKINGS	
MUTCD FIGURE 3B - 18 OPTION B "DO NOT BLOCK"	1



OTTER CREEK ROAD
TRAFFIC CALMING
 NASHVILLE, TN

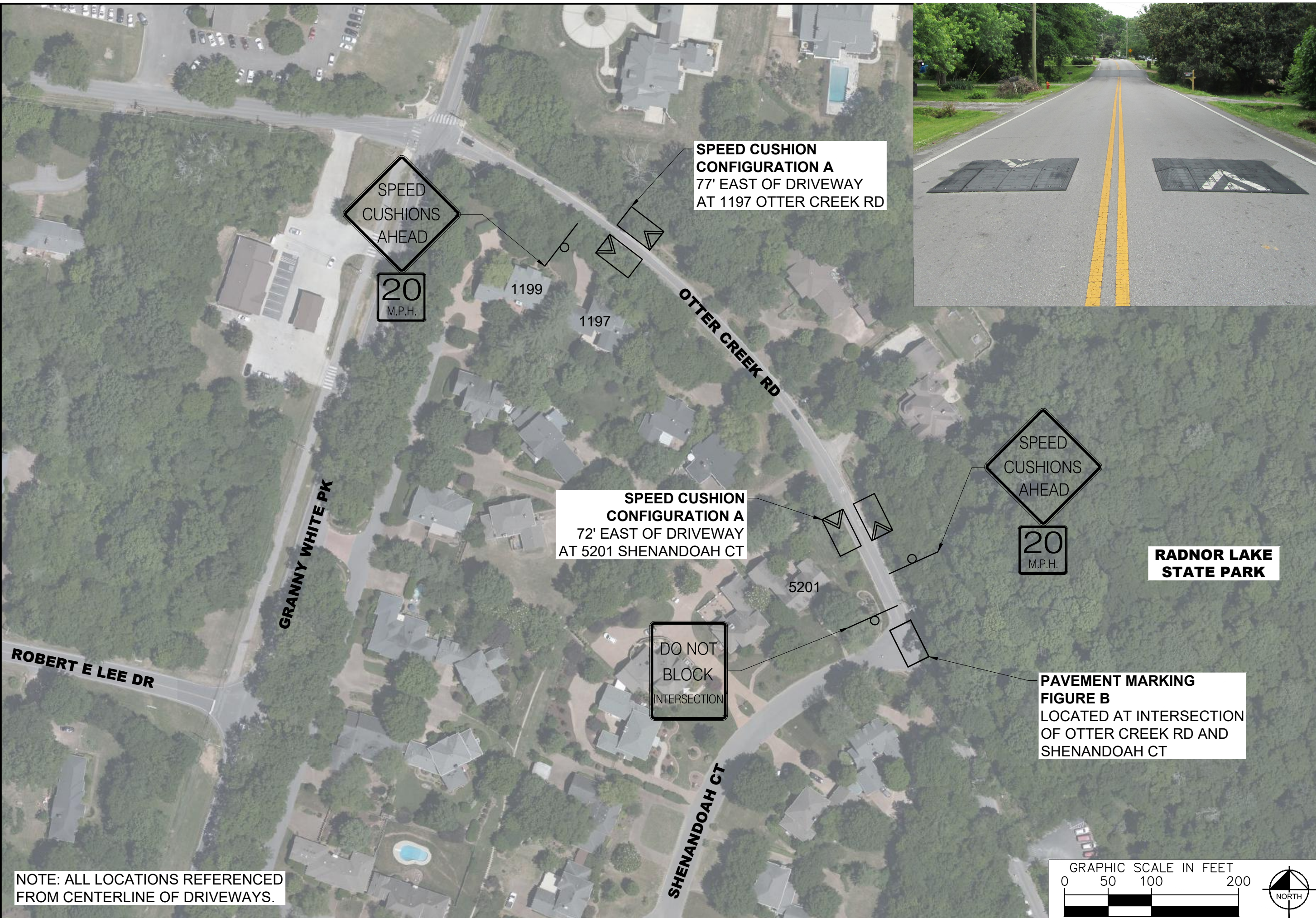


DESIGNED BY:	JH
DRAWN BY:	EMT
CHECKED BY:	NDOT
DATE:	2/9/2023
KIMLEY-HORN PROJECT NO. 11890005	

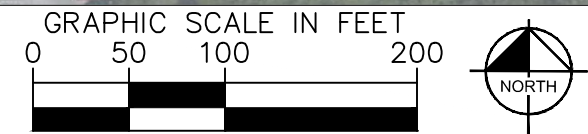


KEY
SHEET NUMBER
01

This document, together with the concepts and designs presented herein, is intended only for the specific purpose and client for which it was prepared. Reuse of and improper reliance on this document without written authorization and adaptation by Kimley-Horn and Associates, Inc. shall be without liability to Kimley-Horn and Associates, Inc.



NOTE: ALL LOCATIONS REFERENCED FROM CENTERLINE OF DRIVEWAYS.



OTTER CREEK ROAD
TRAFFIC CALMING
NASHVILLE, TN



DESIGNED BY: JH
DRAWN BY: EMT
CHECKED BY: NDOT
DATE: 2/9/2023
KIMLEY-HORN PROJECT NO. 118900005

CONCEPT PLAN
SHEET NUMBER
02

