

ESTIMATED QUANTITIES

SPEED CUSHIONS

6' X 10.5' SPEED CUSHION WITH ONE ARROW	8
---	---

SIGNING

W17-1 (VAR.) "SPEED CUSHION" SIGN (30" X 30")	4
---	---

W17-1 "SPEED CUSHIONS AHEAD" SIGN (30" X 30")	2
---	---

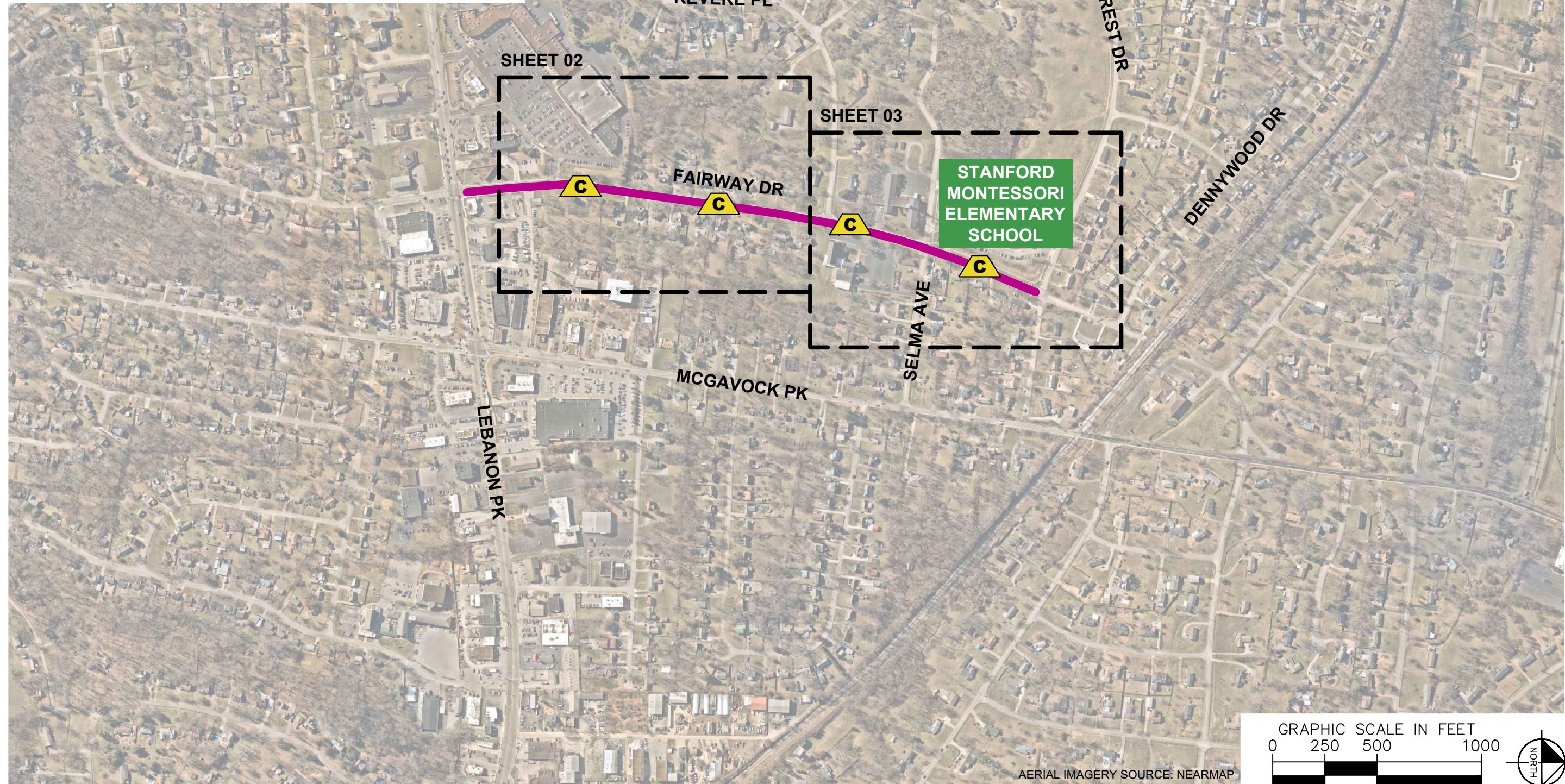
W13-1P "20 M.P.H" SIGN (18" X 18")	6
------------------------------------	---

NOTE: ALL LOCATIONS ARE REFERENCED FROM CENTERLINE OF DRIVEWAYS OR OTHER LANDMARKS TO THE CENTER OF SPEED CUSHIONS OR SIGNS.

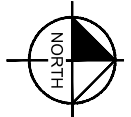
LEGEND

 LIMITS OF TRAFFIC CALMING PROJECT

 SPEED CUSHIONS



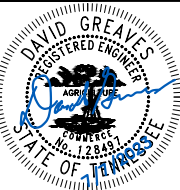
GRAPHIC SCALE IN FEET
0 250 500 1000



AERIAL IMAGERY SOURCE: NEARMAP

NDOT

FAIRWAY DRIVE
TRAFFIC CALMING
NASHVILLE, TN



Kimley  **Horn**

DESIGNED BY:	DJG
DRAWN BY:	DNK
CHECKED BY:	NDOT
DATE:	7/7/2023
KIMLEY-HORN PROJECT NO. 11890036	

KEY

SHEET NUMBER
01

This document, together with the concepts and designs presented herein, is intended only for the specific purpose and client for which it was prepared. Reuse of and improper reliance on this document without written authorization and adaptation by Kimley-Horn and Associates, Inc. shall be without liability to Kimley-Horn and Associates, Inc.

SPEED CUSHIONS

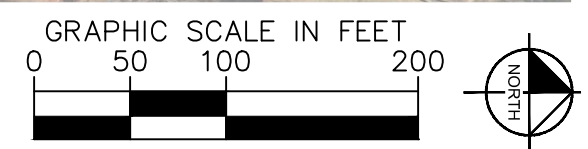


SPEED CUSHION CONFIGURATION A
48' NORTH OF DRIVEWAY
AT 117 FAIRWAY DR

SPEED CUSHION CONFIGURATION A
53' SOUTH OF DRIVEWAY
AT 103 FAIRWAY DR

SPEED CUSHIONS AHEAD
20 M.P.H.

SPEED CUSHIONS AHEAD
20 M.P.H.



AERIAL IMAGERY SOURCE: NEARMAP



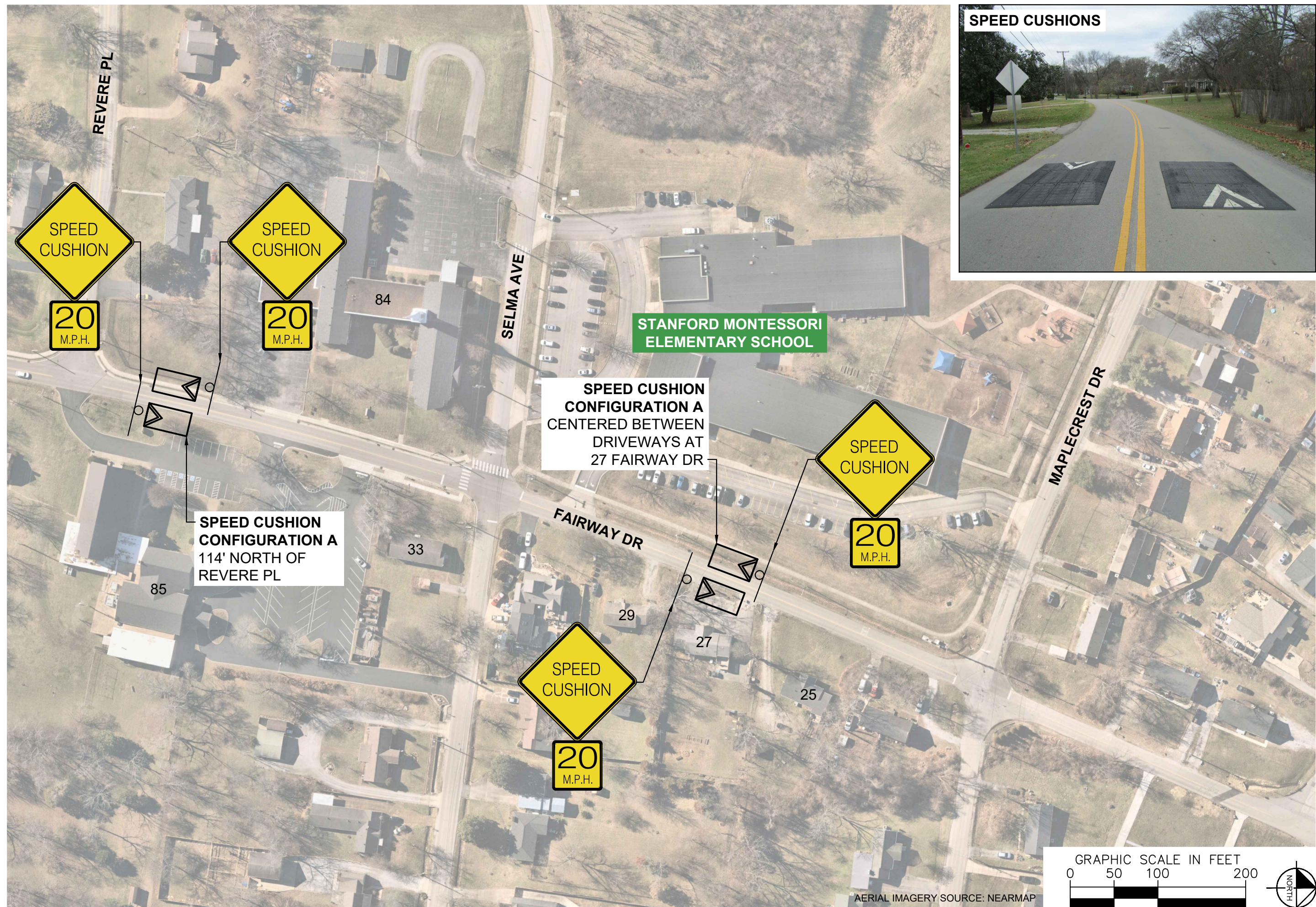
DESIGNED BY:	DJG
DRAWN BY:	DNK
CHECKED BY:	NDOT
DATE:	7/7/2023
KIMLEY-HORN PROJECT NO. 118900036	

CONCEPT

SHEET NUMBER
02

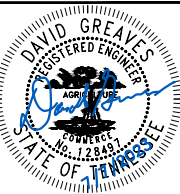
This document, together with the concepts and designs presented herein, is intended only for the specific purpose and client for which it was prepared. Reuse of and improper reliance on this document without written authorization and adaptation by Kimley-Horn and Associates, Inc. shall be without liability to Kimley-Horn and Associates, Inc.

This document, together with the concepts and designs presented herein, is intended only for the specific purpose and client for which it was prepared. Reuse of and improper reliance on this document without written authorization and adaptation by Kimley-Horn and Associates, Inc. shall be without liability to Kimley-Horn and Associates, Inc.



NDOT

FAIRWAY DRIVE
TRAFFIC CALMING
NASHVILLE, TN



Kimley-Horn

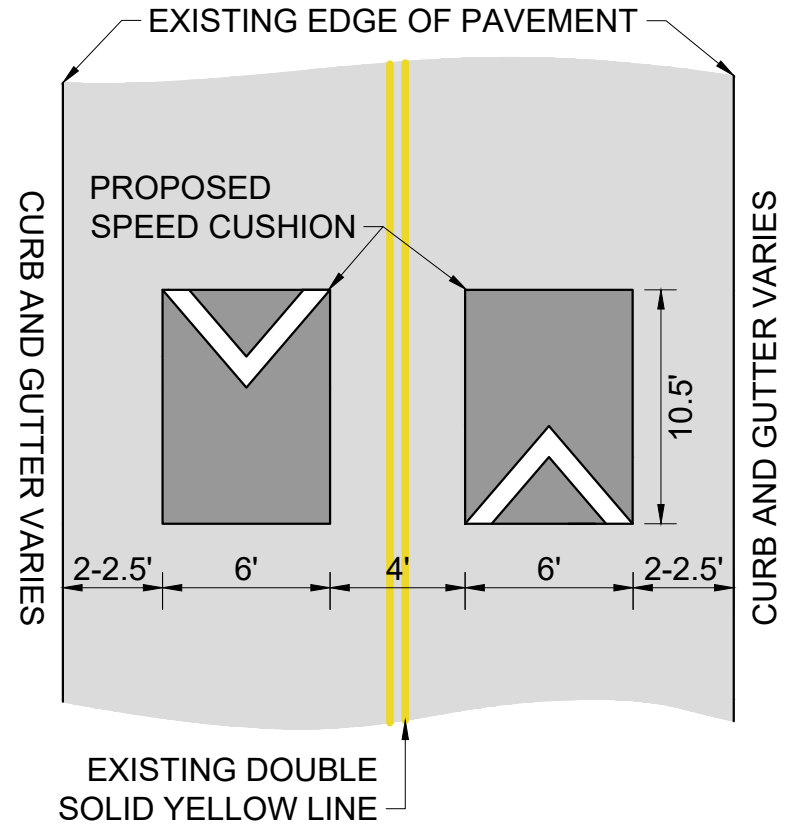
DESIGNED BY: DJG
DRAWN BY: DNK
CHECKED BY: NDOT
DATE: 7/7/2023
KIMLEY-HORN PROJECT NO. 11890036

CONCEPT
SHEET NUMBER
03

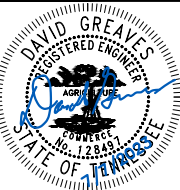
This document, together with the concepts and designs presented herein, as an instrument of service, is intended only for the specific purpose and client for which it was prepared. Reuse of and improper reliance on this document without written authorization and adaptation by Kimley-Horn and Associates, Inc. shall be without liability to Kimley-Horn and Associates, Inc.

CONFIGURATION A

20-21' OF PAVEMENT



FAIRWAY DRIVE
TRAFFIC CALMING
NASHVILLE, TN



DESIGNED BY:	DJG
DRAWN BY:	DNK
CHECKED BY:	NDOT
DATE:	7/7/2023
KIMLEY-HORN PROJECT NO. 118800036	

DETAIL

SHEET NUMBER
04