

## THE FOLLOWING NOTES ARE APPLICABLE TO ALL TYPICALS

**GENERAL NOTES:**





1. All channelizing devices shall be in accordance with the current edition of the Manual on Uniform Traffic Control Devices.
2. All Traffic Control Devices shall have working visible warning lights as required in accordance with the current edition of the MUTCD.
3. For **Temporary Situations**, when it is not feasible to remove and restore pavement markings, channelization must be made dominant by using a very close device spacing. This is especially important in locations of conflicting information, such as where traffic is directed over a double yellow centerline. In such locations, channelizing device spacing of **10 feet** is required.
4. For **Long Term Stationary** work, all conflicting pavement markings must be removed and centerline striping provided where two way traffic is in adjacent lanes.
5. Contractor shall provide sidewalk closure, crosswalk closure and/or walkway bypass wherever pedestrian movements are affected by construction activities. All sidewalk and crosswalks shall be accessible when contractor is not working unless otherwise approved by the City Traffic Engineer.
6. The use of trailer mounted ARROW DISPLAYS may be required on all lane closures. The contractor shall provide one (1) stand-by unit in good working condition at the job site, ready for use, if his operation requires 24-hour a day closure set-ups and if required.
7. City Traffic Engineer and/or Inspectors may require additional traffic control devices.

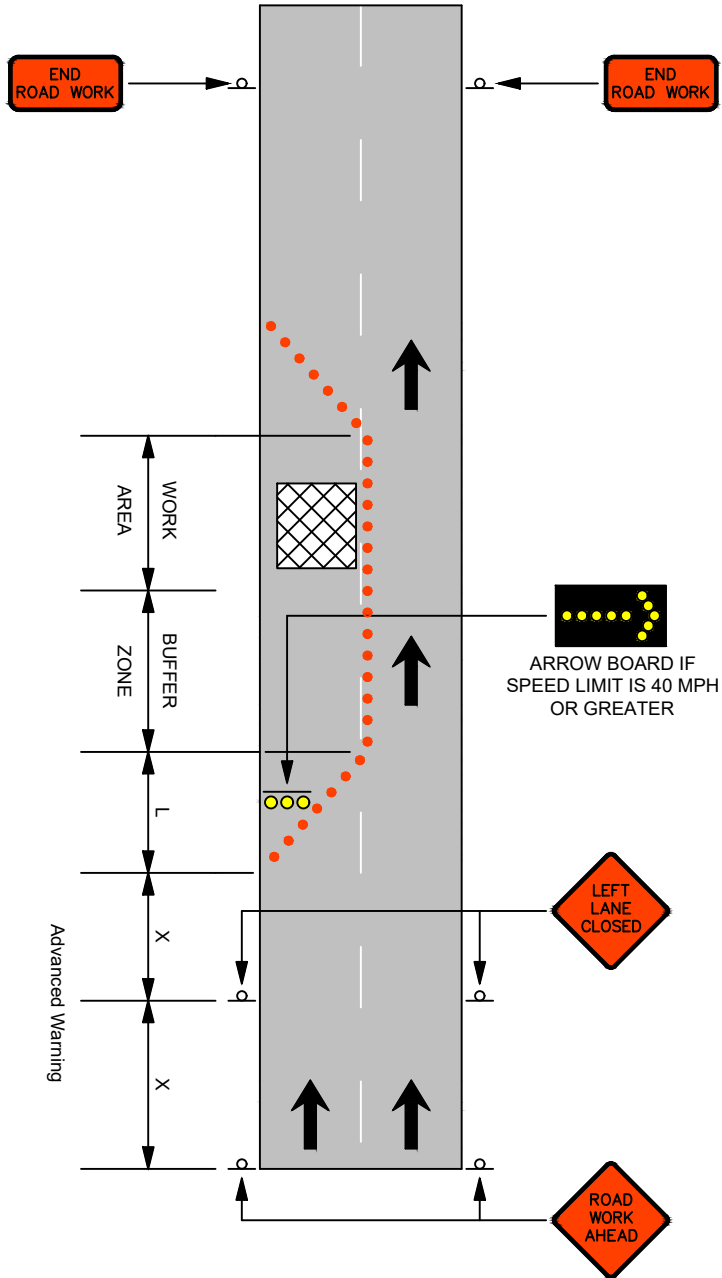
### TYPICAL TRANSITION LENGTHS AND SUGGESTED MAXIMUM SPACING OF DEVICES

| Posted Speed MPH | Formula*              | Minimum Desirable Taper Length (Feet) (L) |                 |                 | Suggested Maximum Device Spacing |                     | Suggested Sign Spacing (Feet) |
|------------------|-----------------------|---|-----------------|-----------------|----------------------------------|---------------------|-------------------------------|
|                  |                       | 10' Lane Offset                           | 11' Lane Offset | 12' Lane Offset | On a Taper (Feet)                | On a Tangent (Feet) | "X" Dimension                 |
| 30               | $L = \frac{WS^2}{60}$ | 150                                       | 165             | 180             | 30                               | 60-75               | 120                           |
| 35               |                       | 205                                       | 225             | 245             | 35                               | 70-90               | 160                           |
| 40               |                       | 265                                       | 295             | 320             | 40                               | 80-100              | 240                           |
| 45               | L = WS                | 450                                       | 495             | 540             | 45                               | 90-110              | 320                           |
| 50               |                       | 500                                       | 550             | 600             | 50                               | 100-125             | 400                           |

\*L = Taper length in feet      W = Width of offset in feet      S = Posted speed

Note: Buffer Zone will be 25 feet (maximum).

| <u>LEGEND</u>   |                      |
|---|----------------------|
|  | Channelizing devices |
|  | Arrow display        |
|  | Flagger              |
|  | Barricade            |



I certify that this plan will be used for the following location(s).

\_\_\_\_\_  
 Signature Date