

### ESTIMATED QUANTITIES

#### SPEED CUSHIONS

6' X 14' SPEED CUSHION WITH ONE ARROW	19
---------------------------------------	----

6' X 10.5' SPEED CUSHION WITH ONE ARROW	2
---	---

#### SIGNING

W17-1 (VAR.) "SPEED CUSHION" SIGN (30" X 30")	16
---	----

W17-1 (VAR.) "SPEED CUSHIONS AHEAD" SIGN (30" X 30")	2
--	---

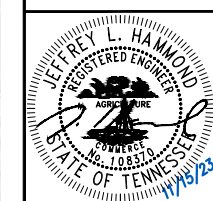
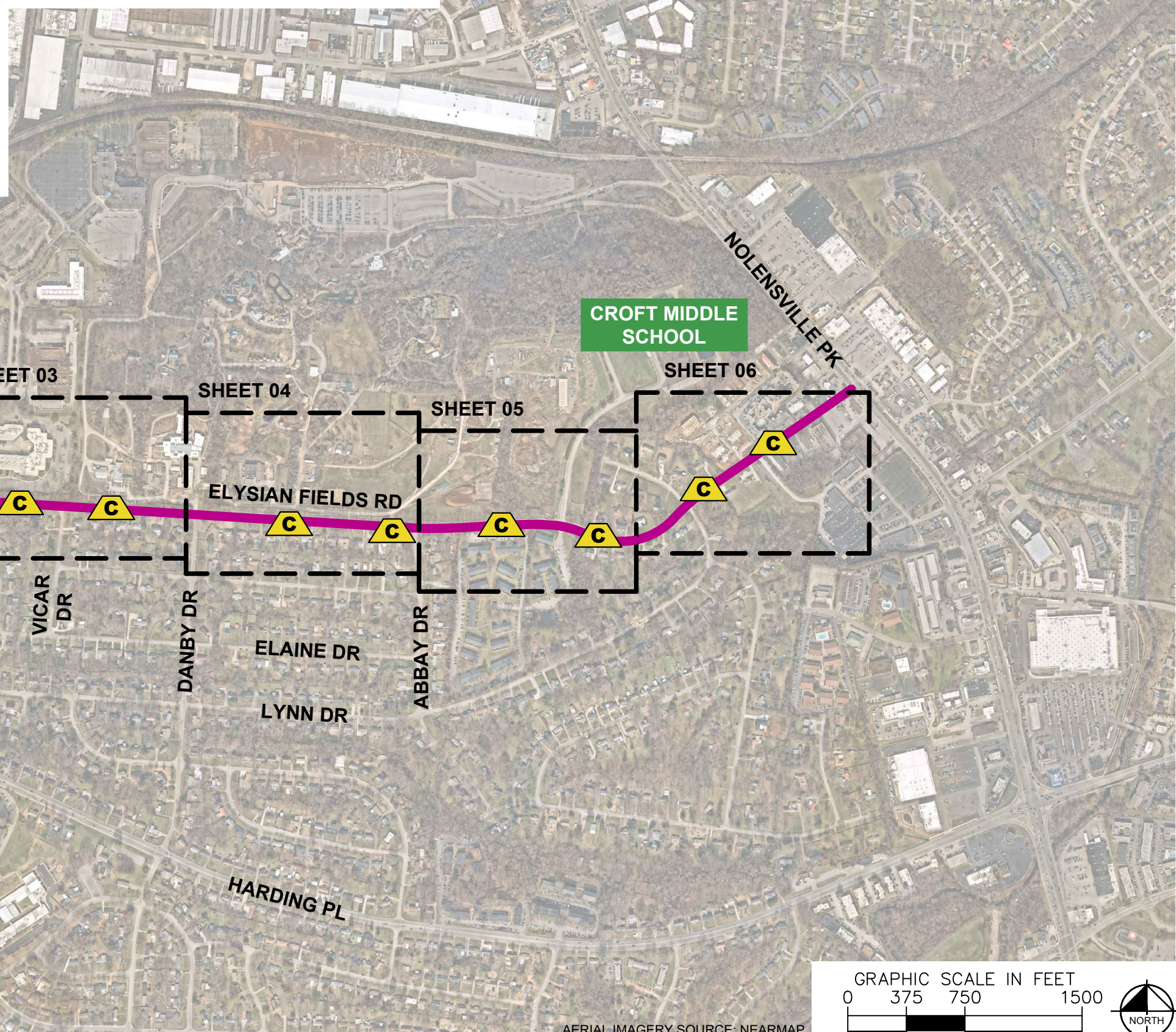
W13-1P "20 M.P.H" SIGN (18" X 18")	18
------------------------------------	----

NOTE: ALL LOCATIONS ARE REFERENCED FROM CENTERLINE OF DRIVEWAYS OR OTHER LANDMARKS TO THE CENTER OF SPEED CUSHIONS OR SIGNS.

### LEGEND

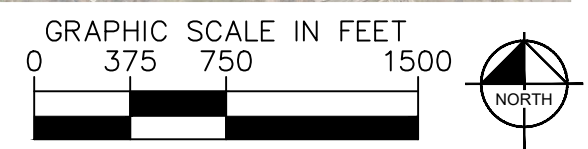
 LIMITS OF TRAFFIC CALMING PROJECT

 SPEED CUSHIONS



DESIGNED BY:	JLH
DRAWN BY:	DJG
CHECKED BY:	NDOT
DATE:	11/15/2023
KIMLEY-HORN PROJECT NO. 118900036	

<b>KEY</b>
SHEET NUMBER
<b>01</b>

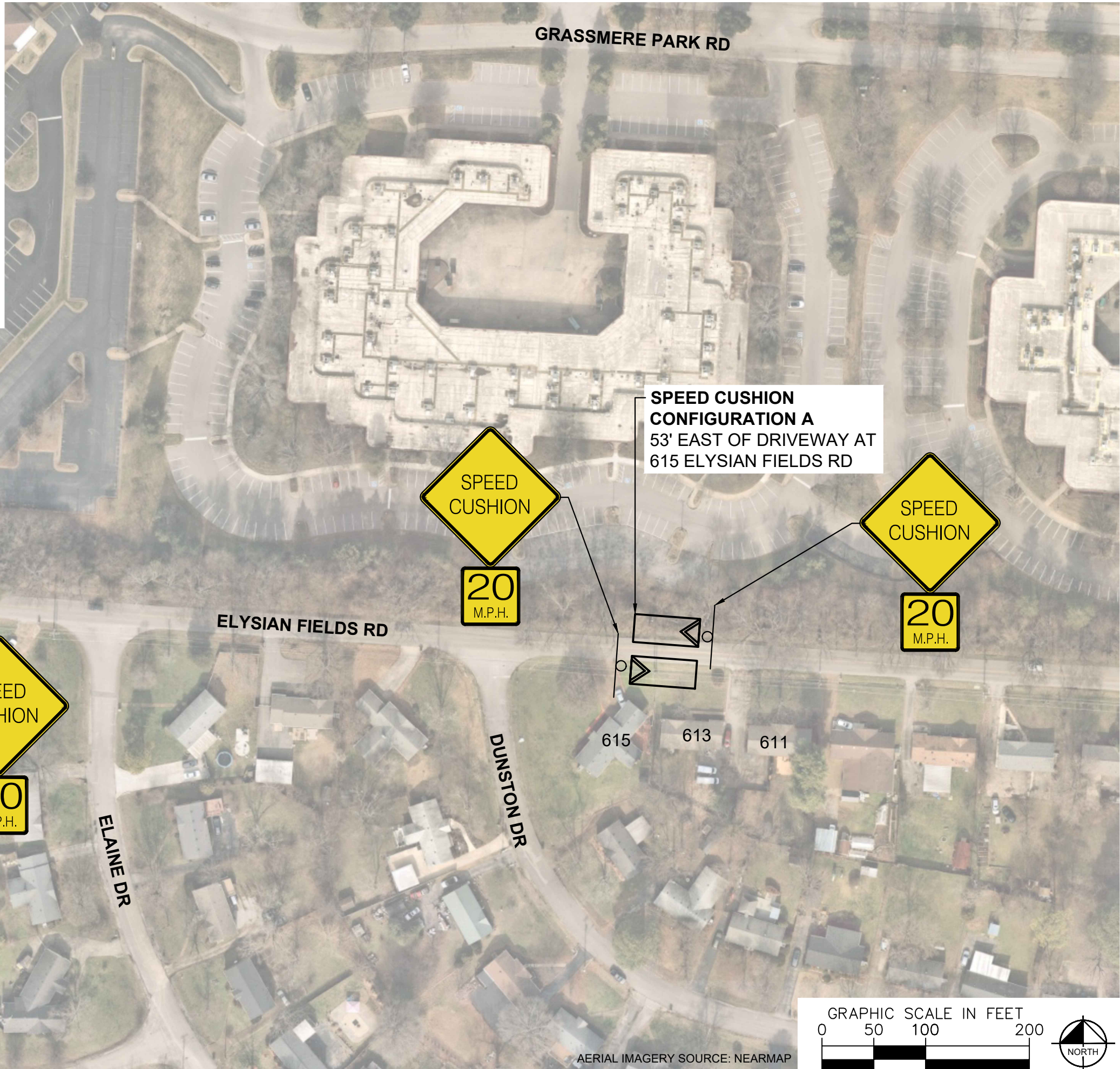
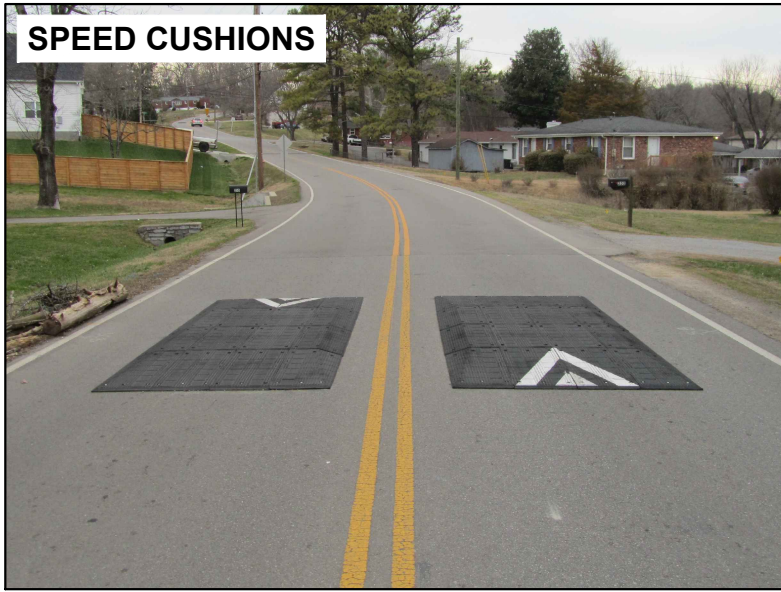


AERIAL IMAGERY SOURCE: NEARMAP

This document, together with the concepts and designs presented herein, is intended only for the specific purpose and client for which it was prepared. Reuse of and improper reliance on this document without written authorization and adaptation by Kimley-Horn and Associates, Inc. shall be without liability to Kimley-Horn and Associates, Inc.

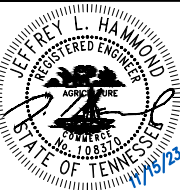


**SPEED CUSHIONS**



**SPEED CUSHION CONFIGURATION C**  
38' EAST OF DRIVEWAY AT  
633 ELYSIAN FIELDS RD

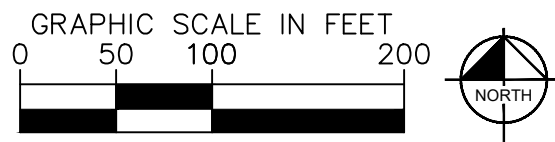
**SPEED CUSHION CONFIGURATION A**  
53' EAST OF DRIVEWAY AT  
615 ELYSIAN FIELDS RD



DESIGNED BY:	JLH
DRAWN BY:	DJG
CHECKED BY:	NDOT
DATE:	11/15/2023
KIMLEY-HORN PROJECT NO. 11890036	

**CONCEPT**

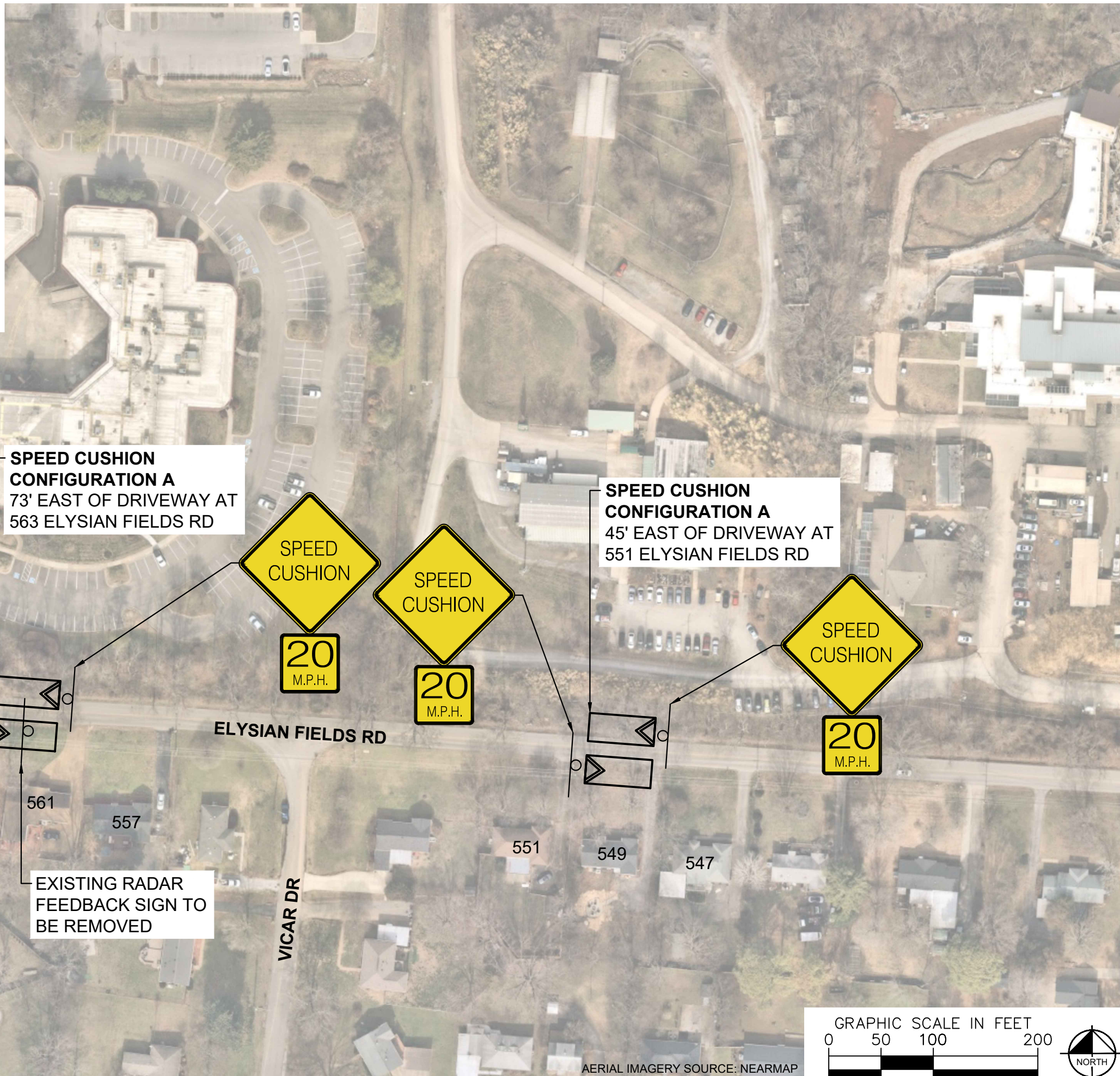
SHEET NUMBER  
**02**



AERIAL IMAGERY SOURCE: NEARMAP



**SPEED CUSHIONS**



**SPEED CUSHION CONFIGURATION A**  
73' EAST OF DRIVEWAY AT  
563 ELYSIAN FIELDS RD

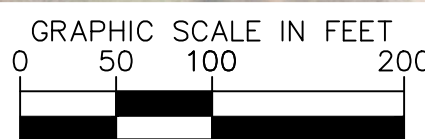
**SPEED CUSHION CONFIGURATION A**  
45' EAST OF DRIVEWAY AT  
551 ELYSIAN FIELDS RD

EXISTING RADAR  
FEEDBACK SIGN  
TO BE REMOVED

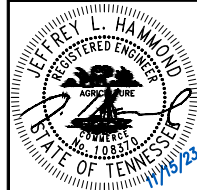
LANGSTON DR

VICAR DR

ELYSIAN FIELDS RD



AERIAL IMAGERY SOURCE: NEARMAP



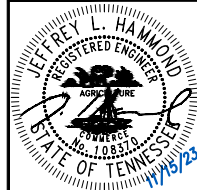
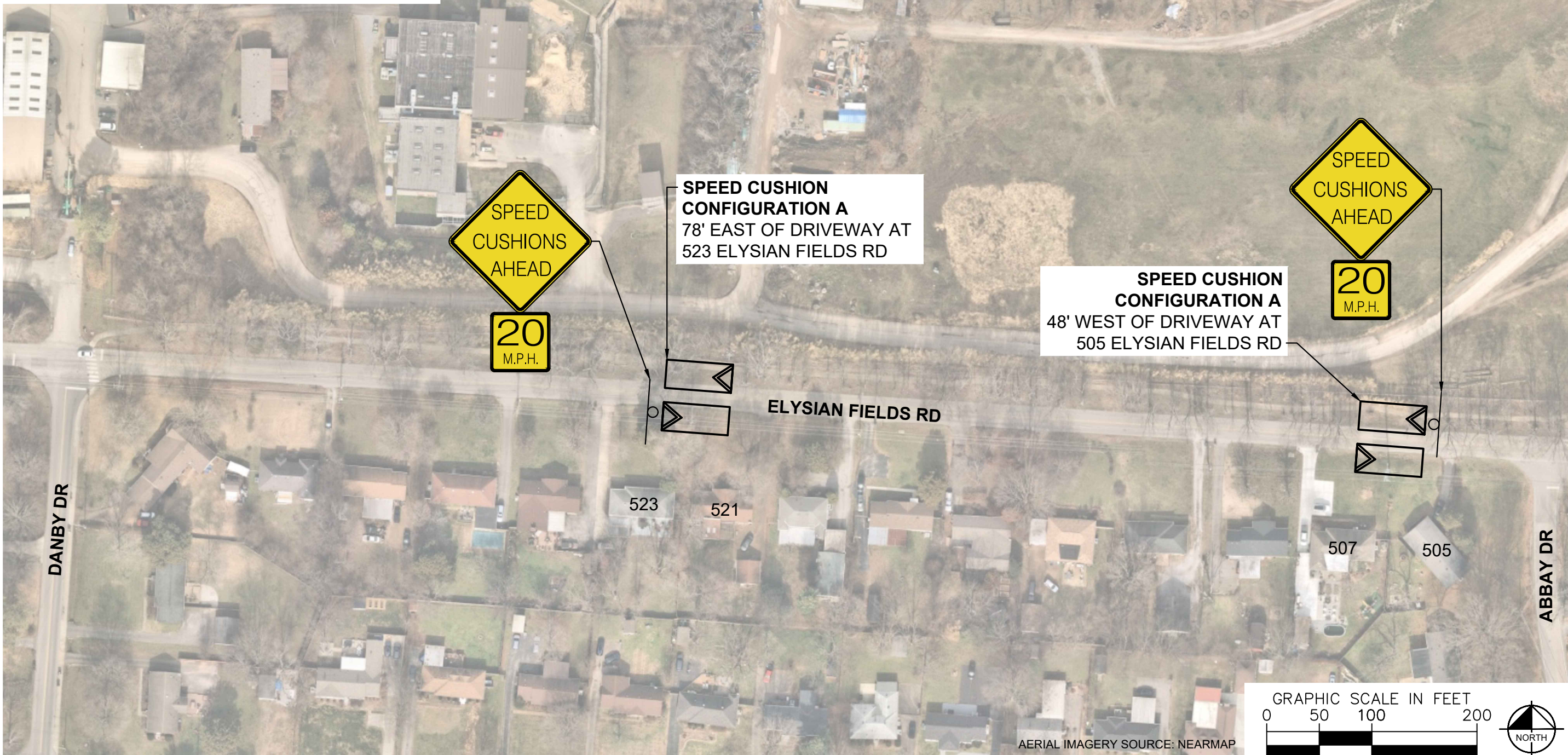
DESIGNED BY: JLH  
DRAWN BY: DJG  
CHECKED BY: NDOT  
DATE: 11/15/2023  
KIMLEY-HORN PROJECT NO. 11880036

**CONCEPT**  
SHEET NUMBER  
**03**

This document, together with the concepts and designs presented herein, is intended only for the specific purpose and client for which it was prepared. Reuse and improper reliance on this document without written authorization and adaptation by Kimley-Horn and Associates, Inc. shall be without liability to Kimley-Horn and Associates, Inc.



**SPEED CUSHIONS**

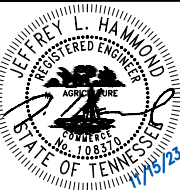
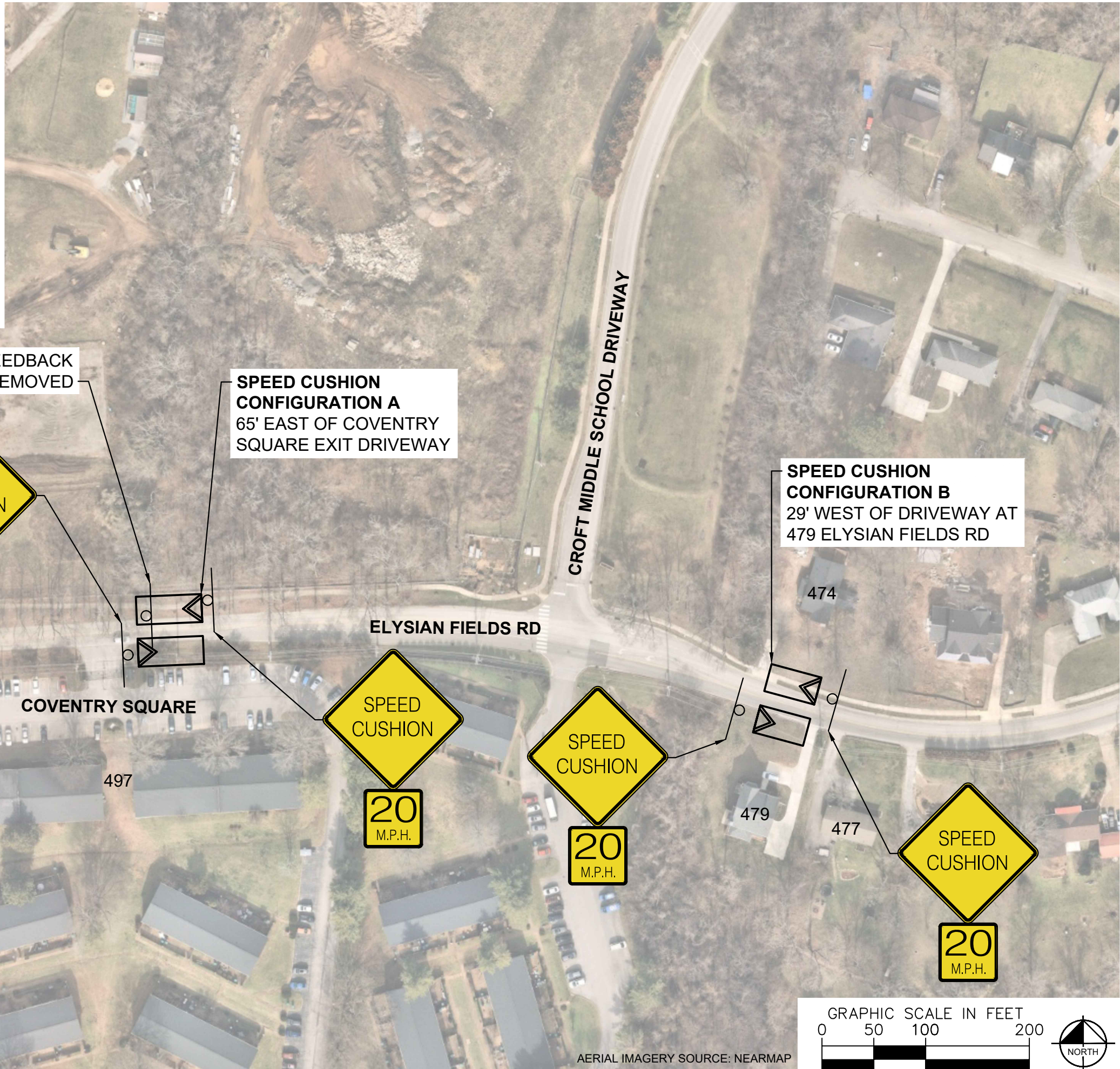


DESIGNED BY:	JLH
DRAWN BY:	DJG
CHECKED BY:	NDOT
DATE:	11/15/2023
KIMLEY-HORN PROJECT NO. 11890036	

Drawing name: K:\NSH\_TPTO\11890036 - traffic calming3 - design - december 2022 cycle\03 - elysian fields road\Design\CAD\plansheets\Elysian Fields Road-TrafficCalming.dwg 04-CONCEPT Nov 15, 2023 1:32pm by: danielle.korporal

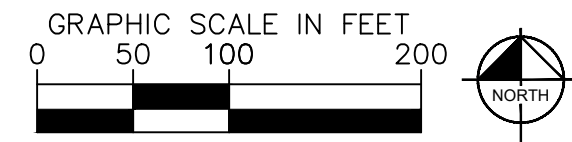


**SPEED CUSHIONS**



DESIGNED BY: JLH  
 DRAWN BY: DJG  
 CHECKED BY: NDOT  
 DATE: 11/15/2023  
 KIMLEY-HORN PROJECT NO. 118900036

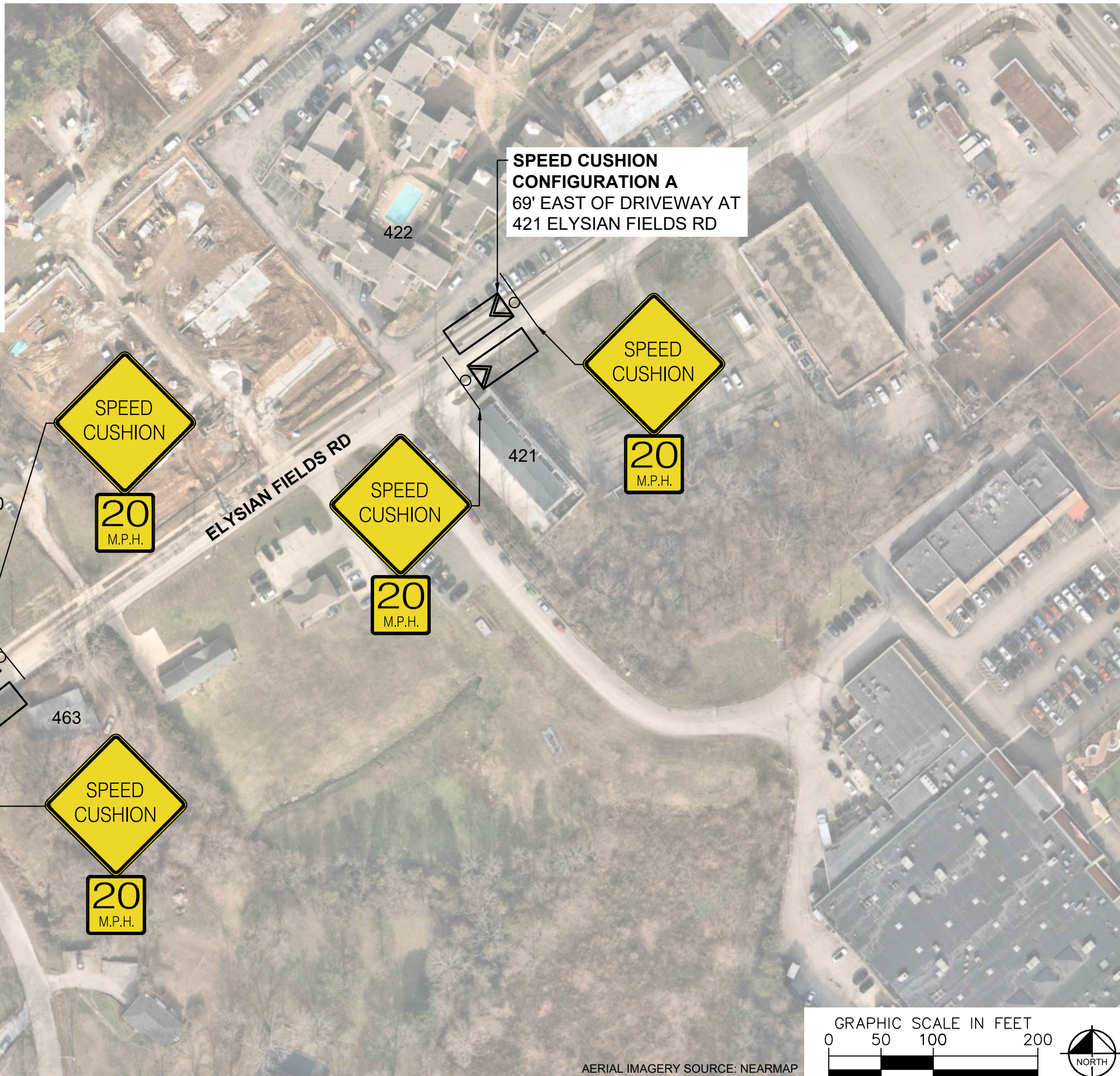
**CONCEPT**  
 SHEET NUMBER  
**05**



AERIAL IMAGERY SOURCE: NEARMAP

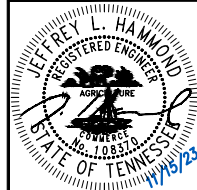


**SPEED CUSHIONS**



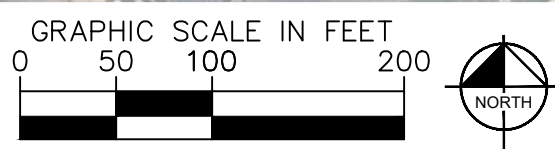
**SPEED CUSHION CONFIGURATION A**  
100' WEST OF DRIVEWAY  
AT 463 ELYSIAN FIELDS RD

**SPEED CUSHION CONFIGURATION A**  
69' EAST OF DRIVEWAY AT  
421 ELYSIAN FIELDS RD



DESIGNED BY:	JLH
DRAWN BY:	DJG
CHECKED BY:	NDOT
DATE:	11/15/2023
KIMLEY-HORN PROJECT NO. 118800036	

**CONCEPT**  
SHEET NUMBER  
**06**



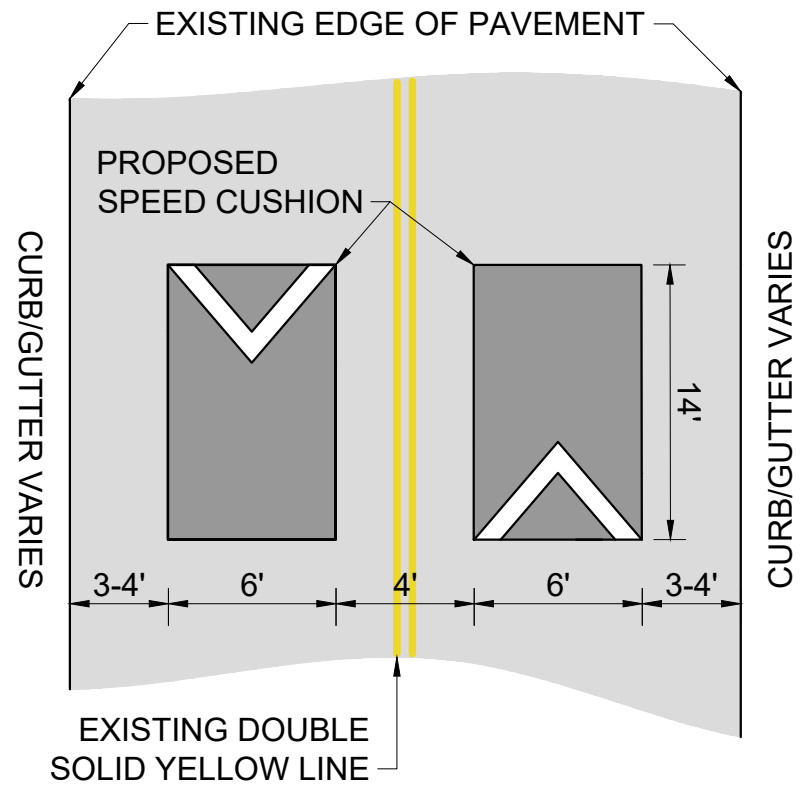
AERIAL IMAGERY SOURCE: NEARMAP



This document, together with the concepts and designs presented herein, is intended only for the specific purpose and client for which it was prepared. Reuse of and improper reliance on this document without written authorization and adaptation by Kimley-Horn and Associates, Inc. shall be without liability to Kimley-Horn and Associates, Inc.

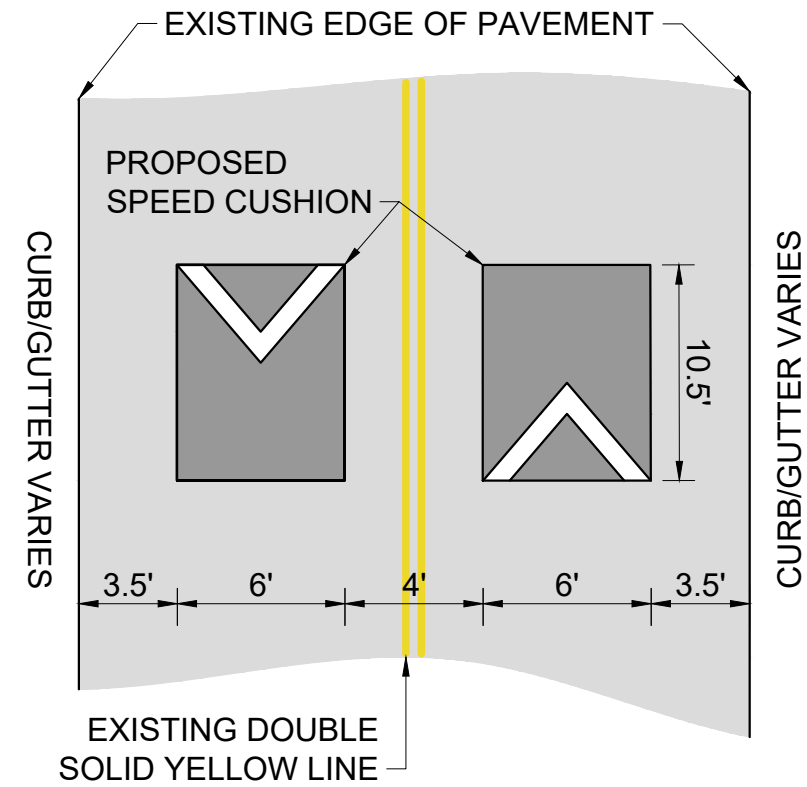
### CONFIGURATION A

22-24' OF PAVEMENT



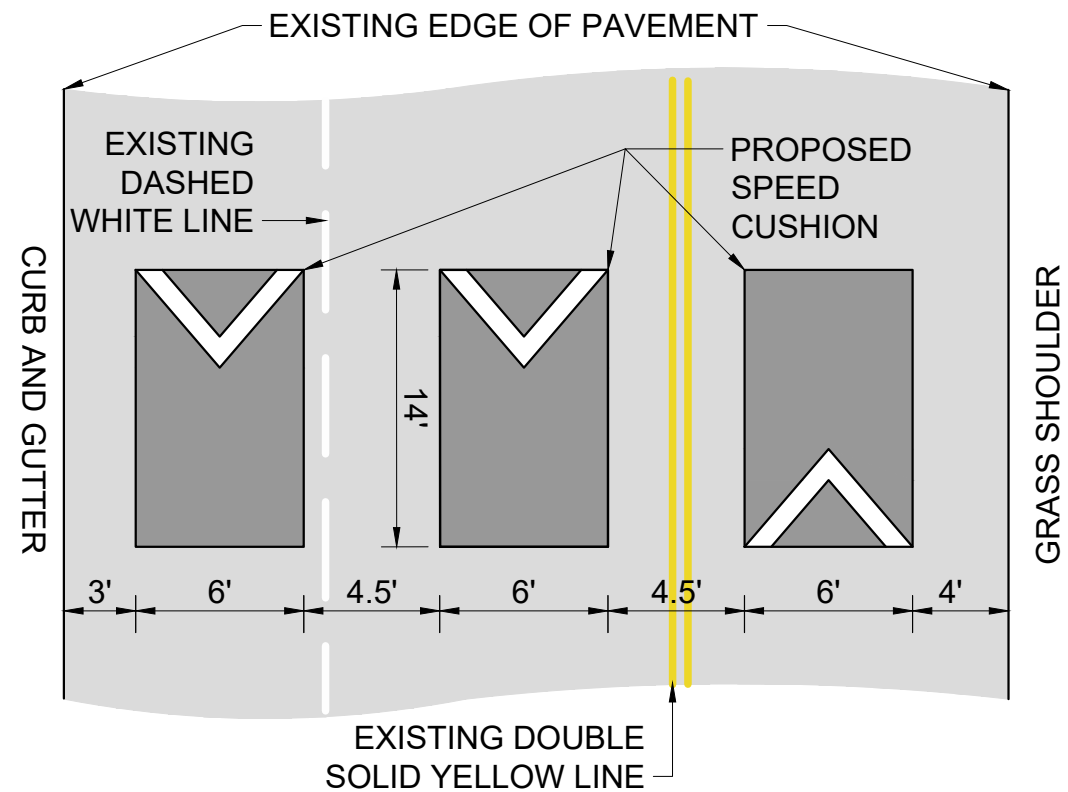
### CONFIGURATION B

23' OF PAVEMENT

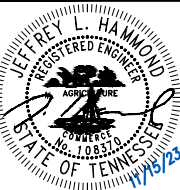


### CONFIGURATION C

34' OF PAVEMENT



ELYSIAN FIELDS ROAD  
TRAFFIC CALMING  
NASHVILLE, TN



DESIGNED BY:	JLH
DRAWN BY:	DJG
CHECKED BY:	NDOT
DATE:	11/15/2023
KIMLEY-HORN PROJECT NO.:	118800036

DETAIL

SHEET NUMBER  
07