

ESTIMATED QUANTITIES

SPEED CUSHIONS

6' X 7' SPEED CUSHION WITH ONE ARROW	6
--------------------------------------	---

SIGNING

W17-1 (VAR.) "SPEED CUSHION" SIGN (30" X 30")	6
---	---

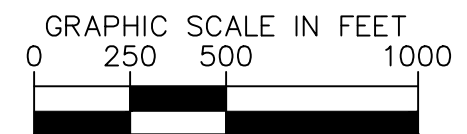
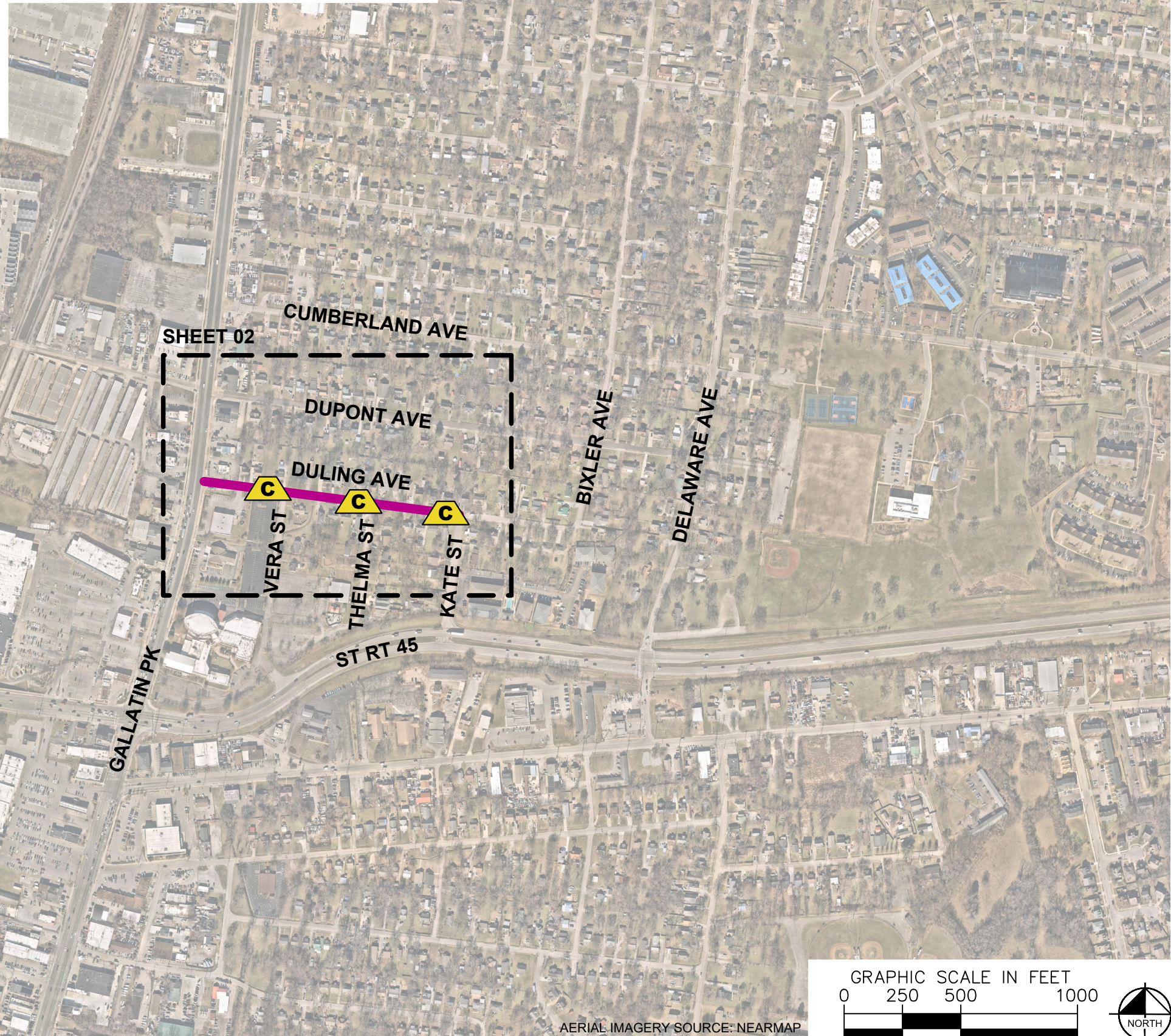
W13-1P "20 M.P.H" SIGN (18" X 18")	6
------------------------------------	---

NOTE: ALL LOCATIONS ARE REFERENCED FROM CENTERLINE OF DRIVEWAYS OR OTHER LANDMARKS TO THE CENTER OF SPEED CUSHIONS OR SIGNS.

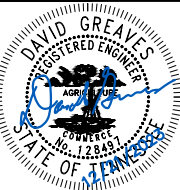
LEGEND

 LIMITS OF TRAFFIC CALMING PROJECT

 SPEED CUSHIONS



AERIAL IMAGERY SOURCE: NEARMAP

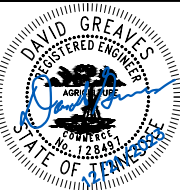
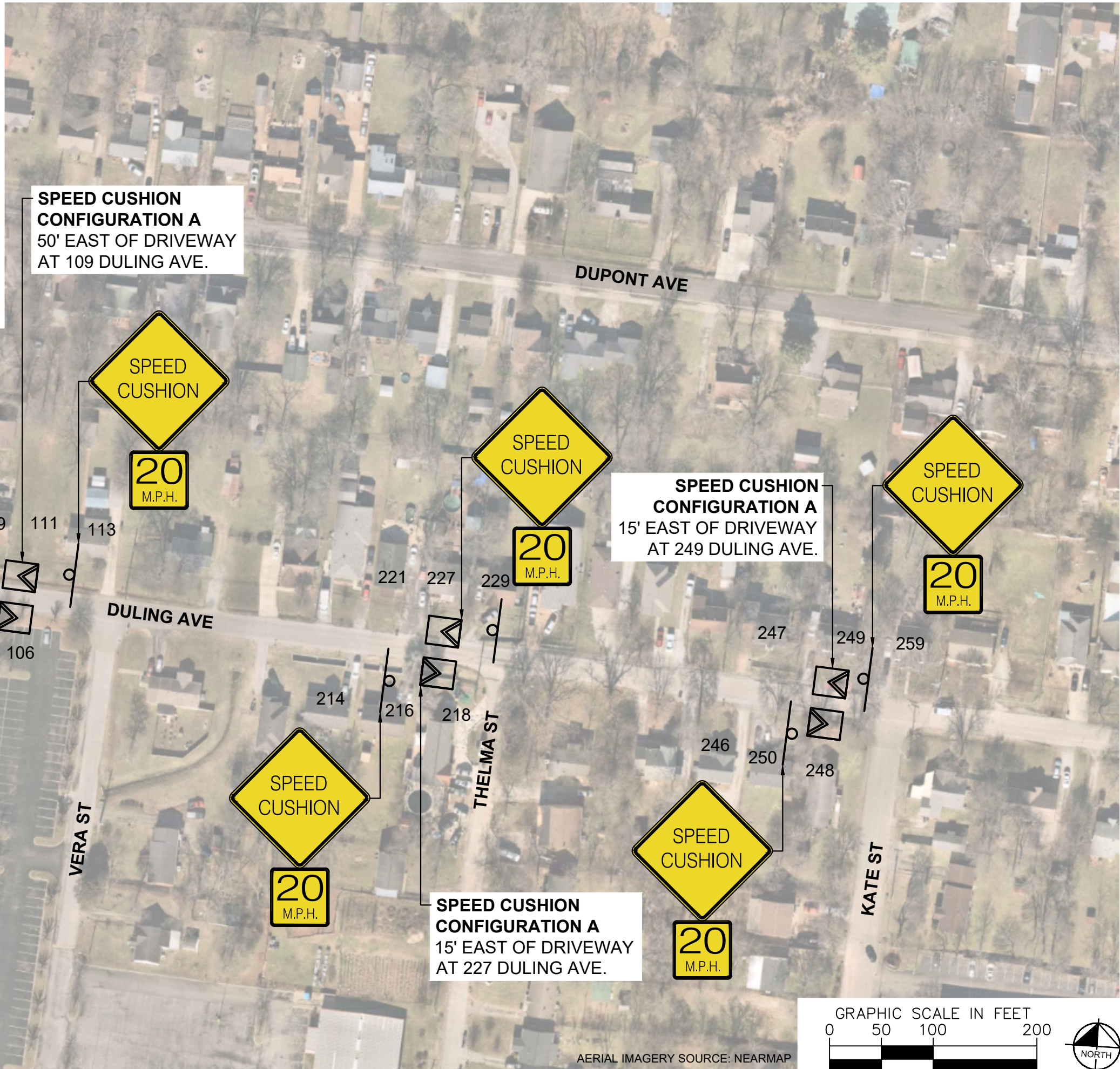
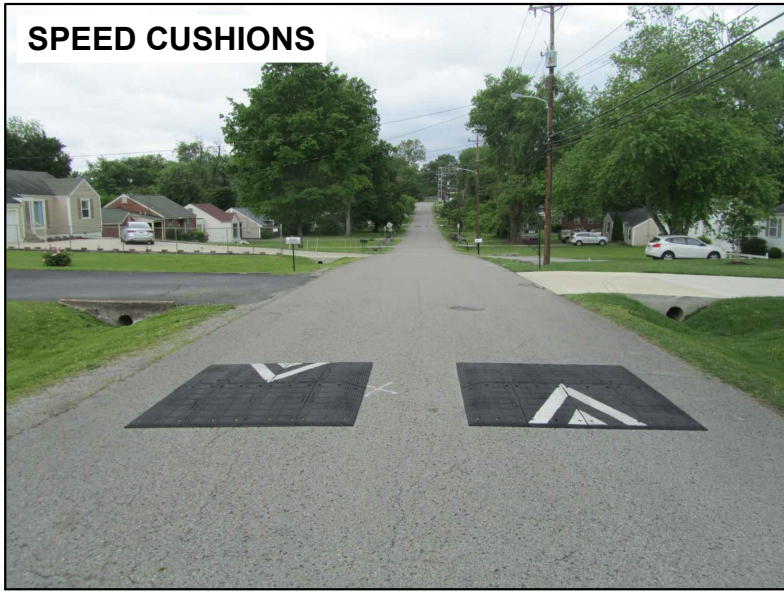


DESIGNED BY:	GR
DRAWN BY:	GR
CHECKED BY:	NDOT
DATE:	12/21/2023
KIMLEY-HORN PROJECT NO. 118900046	

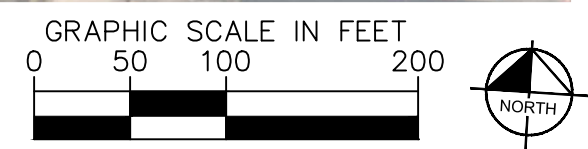
KEY
SHEET NUMBER
01

This document, together with the concepts and designs presented herein, is intended only for the specific purpose and client for which it was prepared. Reuse of and improper reliance on this document without written authorization and adaptation by Kimley-Horn and Associates, Inc. shall be without liability to Kimley-Horn and Associates, Inc.

SPEED CUSHIONS



DESIGNED BY:	GR
DRAWN BY:	GR
CHECKED BY:	NDOT
DATE:	12/21/2023
KIMLEY-HORN PROJECT NO. 118900046	

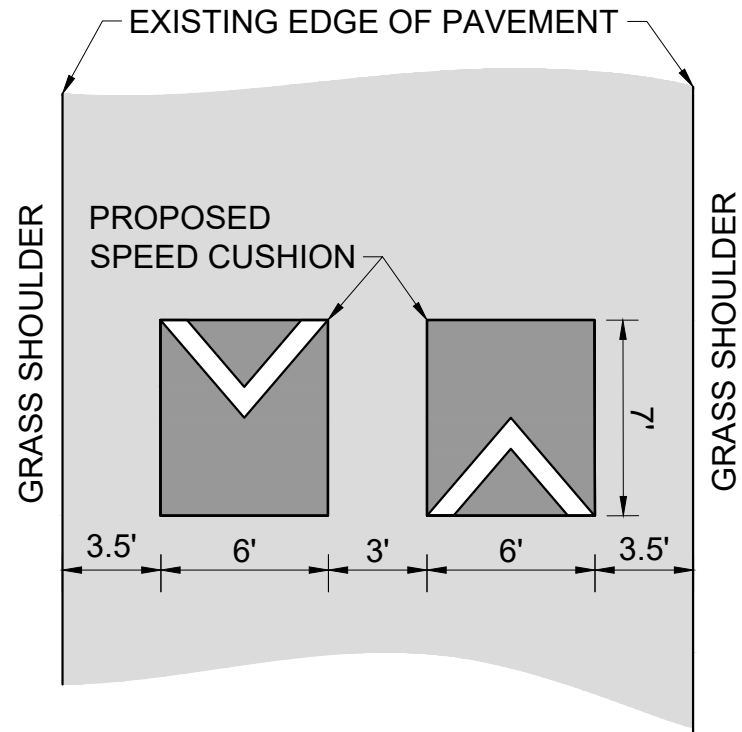


AERIAL IMAGERY SOURCE: NEARMAP

This document, together with the concepts and designs presented herein, as an instrument of service, is intended only for the specific purpose and client for which it was prepared. Reuse of and improper reliance on this document without written authorization and adaptation by Kimley-Horn and Associates, Inc. shall be without liability to Kimley-Horn and Associates, Inc.

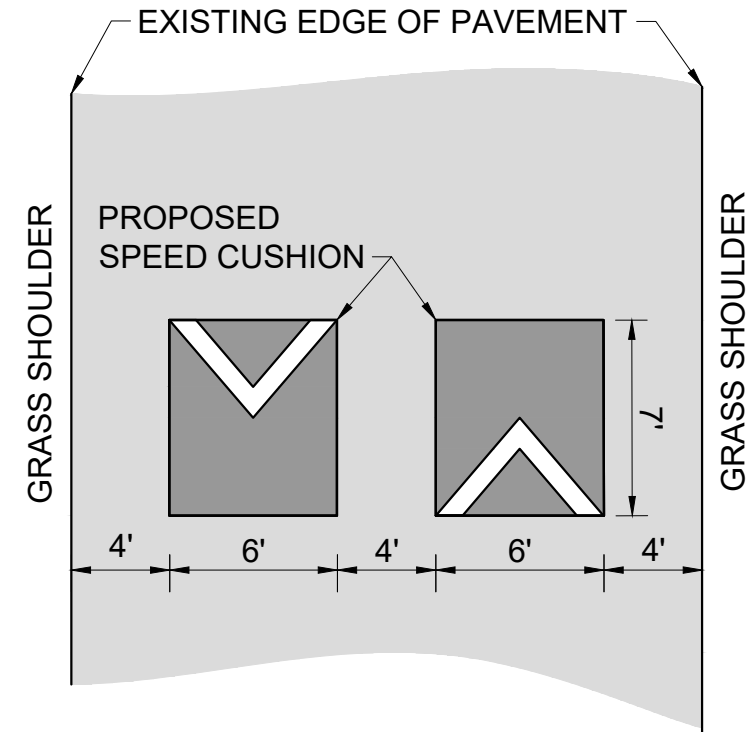
CONFIGURATION A

22' OF PAVEMENT

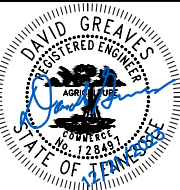


CONFIGURATION A

24' OF PAVEMENT



DULING AVE
TRAFFIC CALMING
NASHVILLE, TN



DESIGNED BY:	GR
DRAWN BY:	GR
CHECKED BY:	NDOT
DATE:	12/21/2023
KIMLEY-HORN PROJECT NO.:	118800046

DETAIL

SHEET NUMBER
03