

ESTIMATED QUANTITIES

SPEED CUSHIONS

6' X 10.5' SPEED CUSHION WITH ONE ARROW	8
---	---

SIGNING

W17-1 (VAR.) "SPEED CUSHION" SIGN (30" X 30")	8
---	---

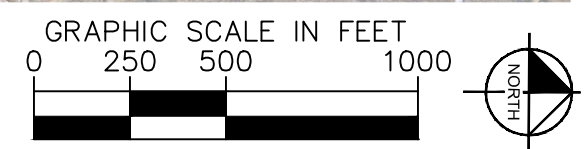
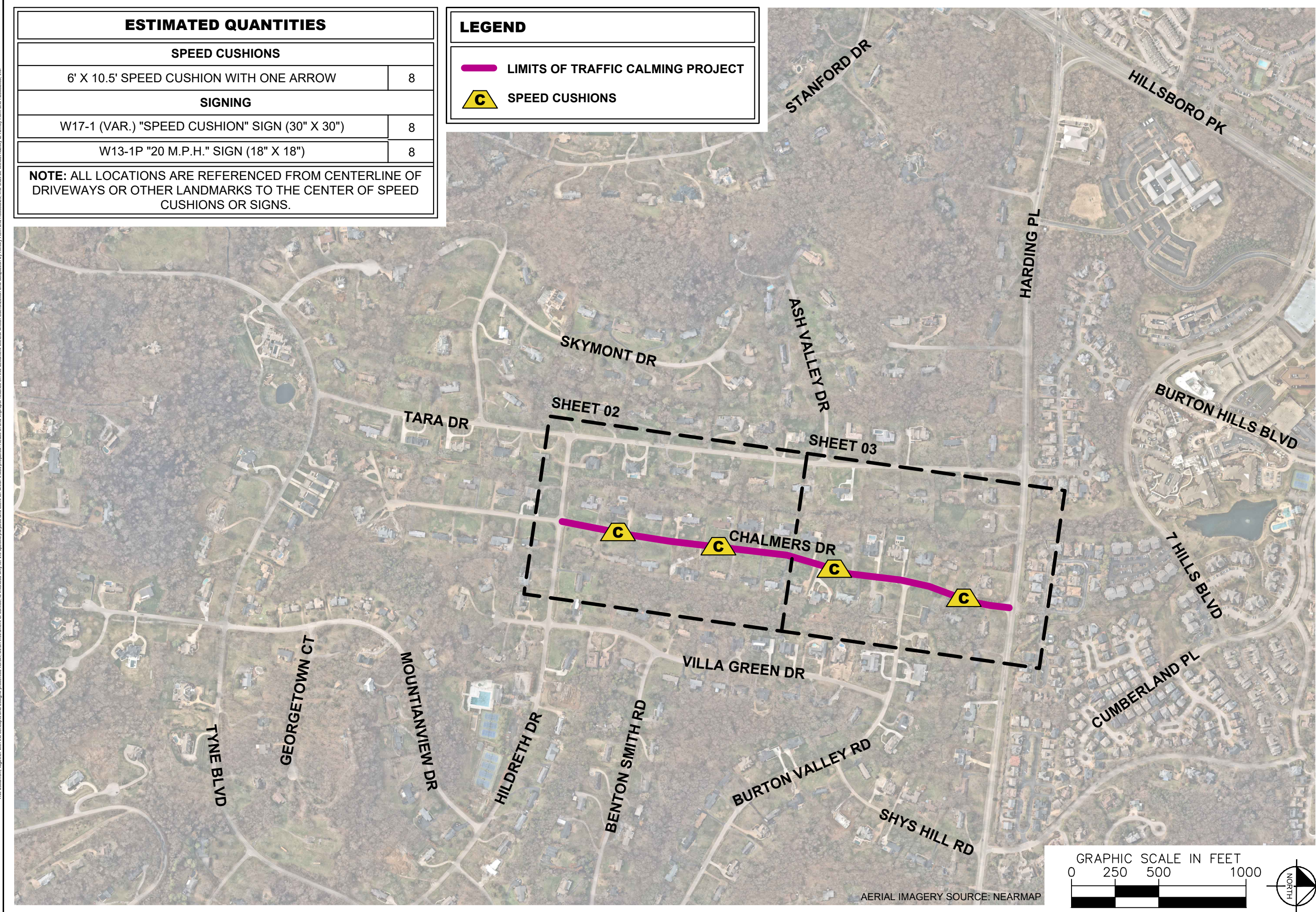
W13-1P "20 M.P.H." SIGN (18" X 18")	8
-------------------------------------	---

NOTE: ALL LOCATIONS ARE REFERENCED FROM CENTERLINE OF DRIVEWAYS OR OTHER LANDMARKS TO THE CENTER OF SPEED CUSHIONS OR SIGNS.

LEGEND

 LIMITS OF TRAFFIC CALMING PROJECT

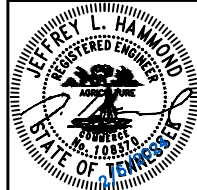
 SPEED CUSHIONS



AERIAL IMAGERY SOURCE: NEARMAP



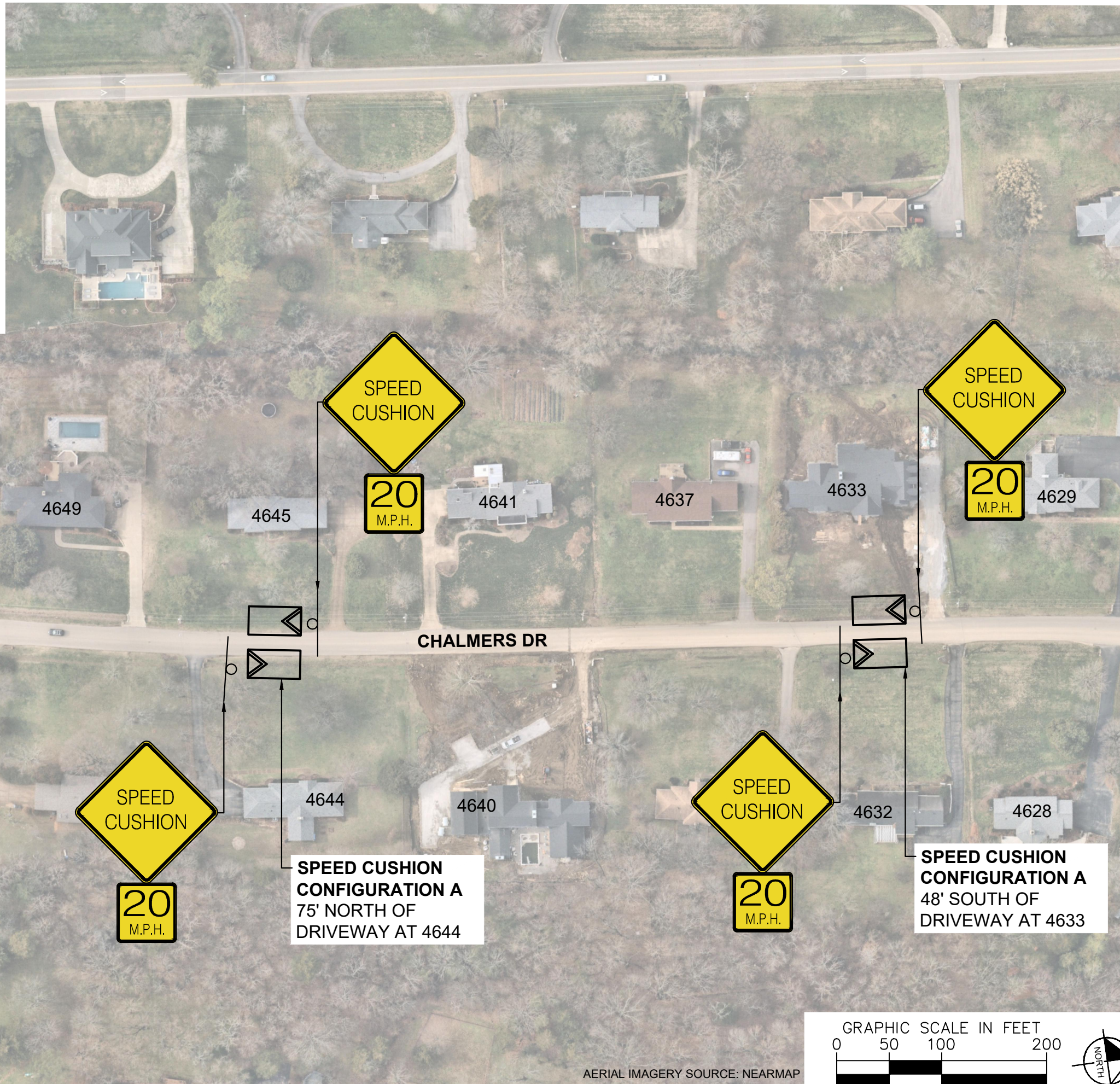
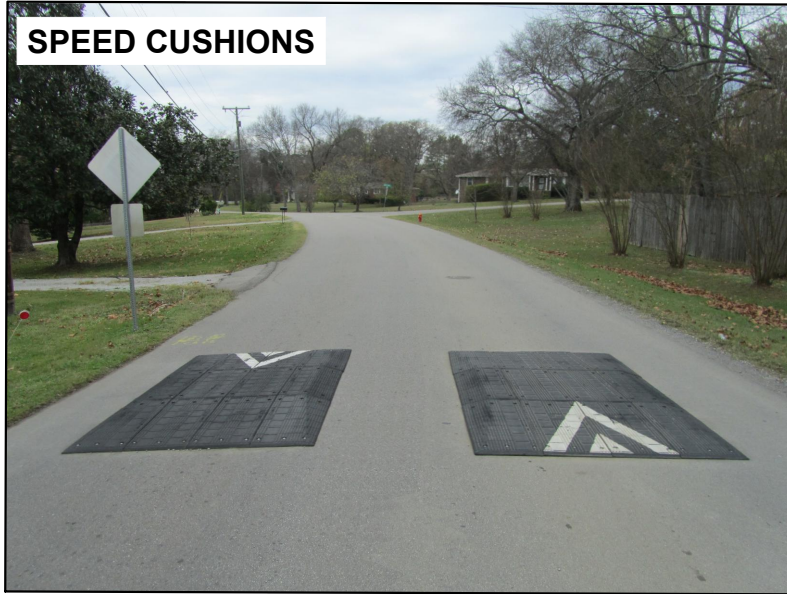
CHALMERS DRIVE
TRAFFIC CALMING
NASHVILLE, TN



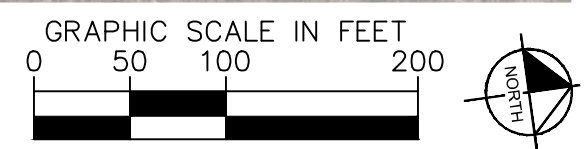
DESIGNED BY: JLH
DRAWN BY: AMM
CHECKED BY: NDOT
DATE: 2/8/2024
KIMLEY-HORN PROJECT NO. 118900046

KEY
SHEET NUMBER
01

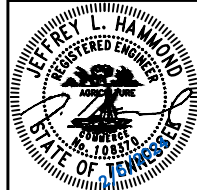
SPEED CUSHIONS



AERIAL IMAGERY SOURCE: NEARMAP



CHALMERS DRIVE
TRAFFIC CALMING
NASHVILLE, TN



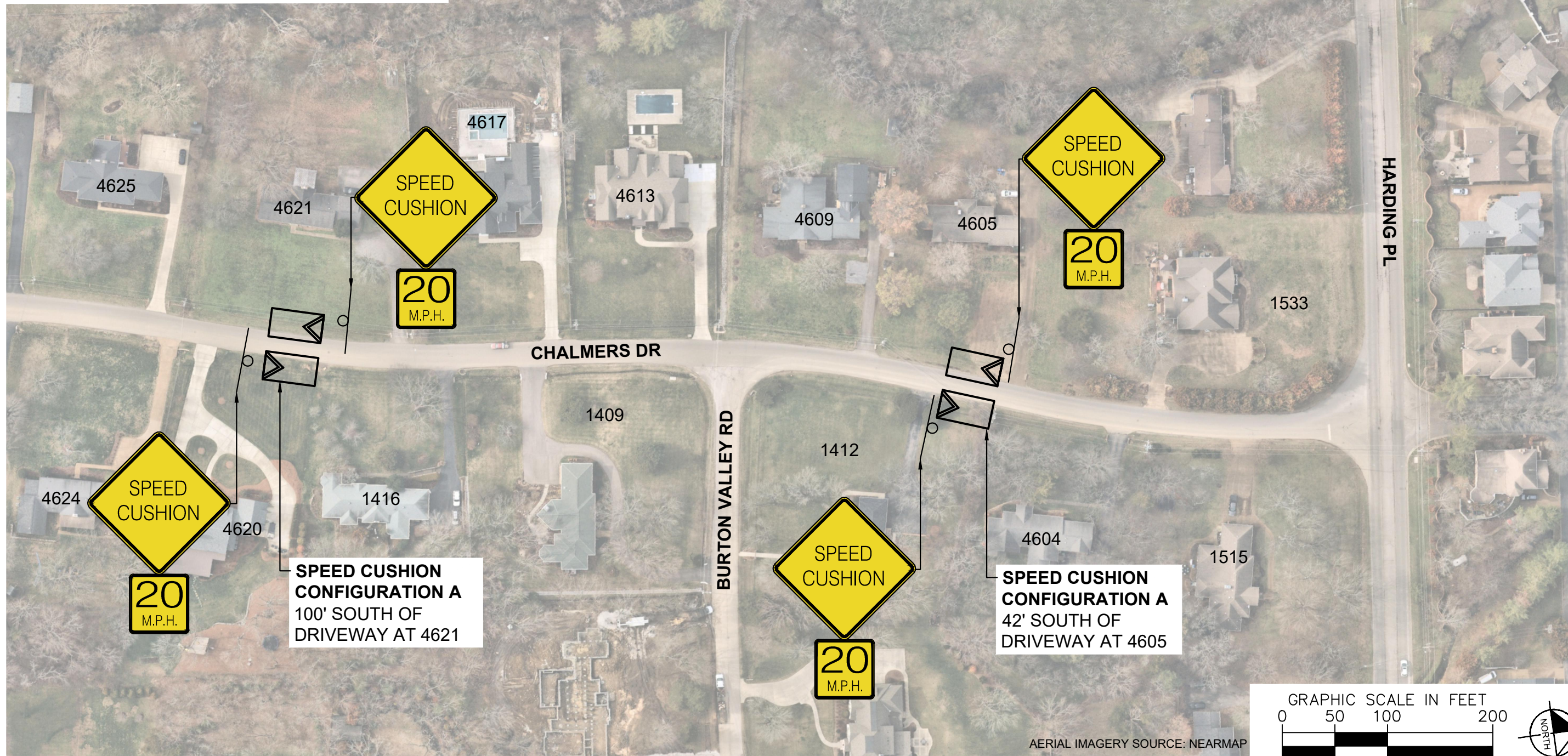
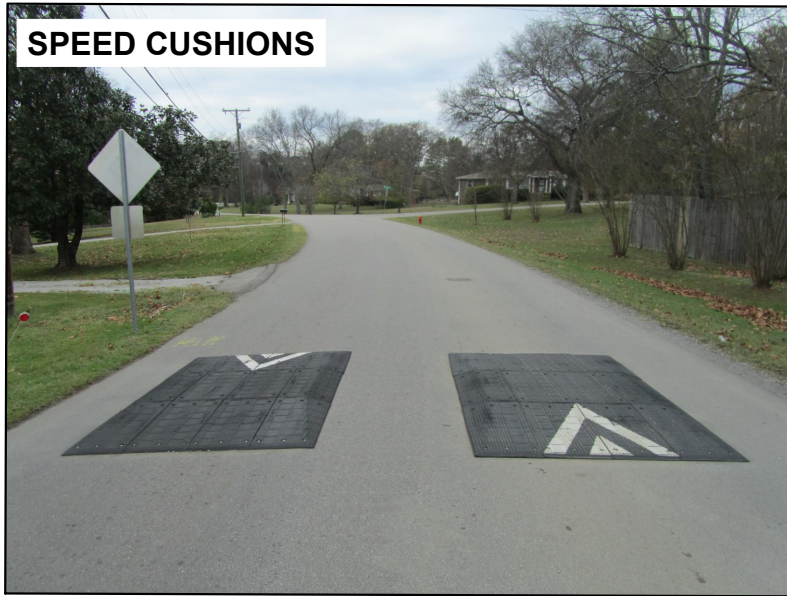
DESIGNED BY:	JLH
DRAWN BY:	AMM
CHECKED BY:	NDOT
DATE:	2/9/2024
KIMLEY-HORN PROJECT NO.	118900046

CONCEPT

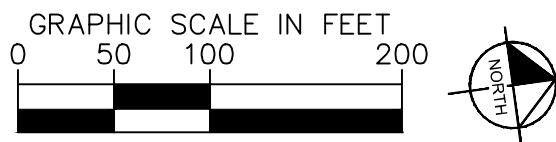
SHEET NUMBER
02

This document, together with the concepts and designs presented herein, is intended only for the specific purpose and client for which it was prepared. Reuse of and improper reliance on this document without written authorization and adaptation by Kimley-Horn and Associates, Inc. shall be without liability to Kimley-Horn and Associates, Inc.

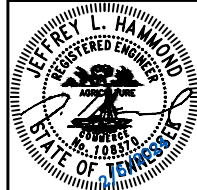
SPEED CUSHIONS



AERIAL IMAGERY SOURCE: NEARMAP



**CHALMERS DRIVE
TRAFFIC CALMING**
NASHVILLE, TN



DESIGNED BY:	JLH
DRAWN BY:	AMM
CHECKED BY:	NDOT
DATE:	2/8/2024
KIMLEY-HORN PROJECT NO.:	118900046

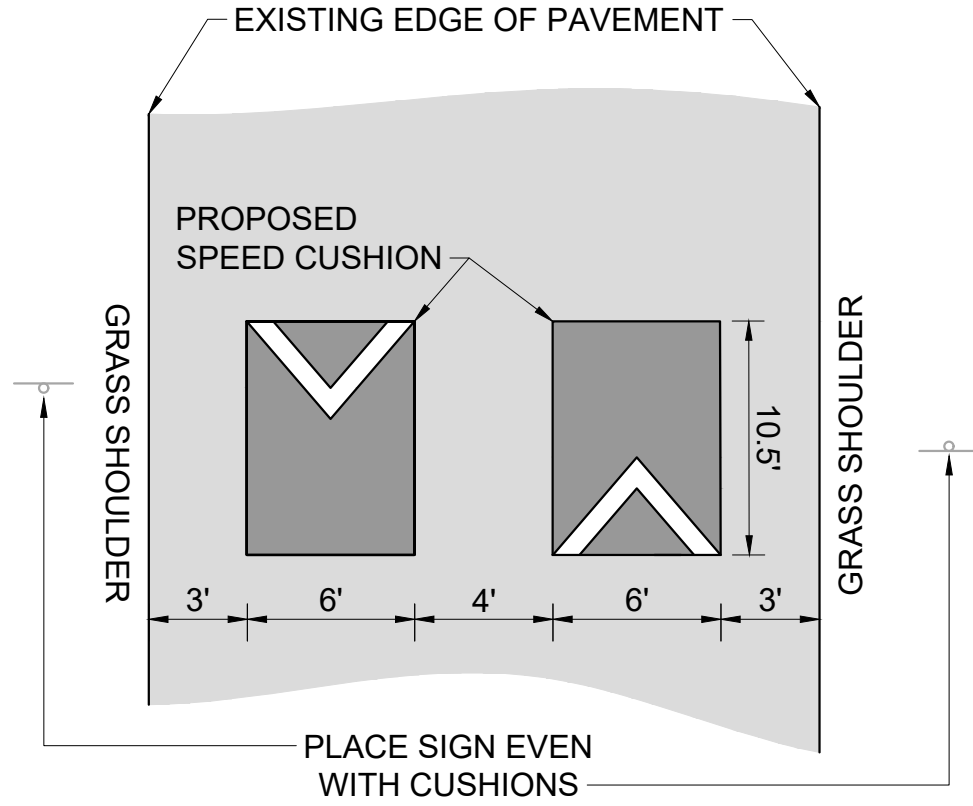
CONCEPT
SHEET NUMBER
03

This document, together with the concepts and designs presented herein, is intended only for the specific purpose and client for which it was prepared. Reuse of any portion of this document without written authorization and adaptation by Kimley-Horn and Associates, Inc. shall be without liability to Kimley-Horn and Associates, Inc.

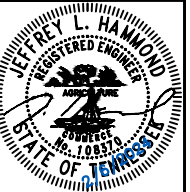
This document, together with the concepts and designs presented herein, as an instrument of service, is intended only for the specific purpose and client for which it was prepared. Reuse of and improper reliance on this document without written authorization and adaptation by Kimley-Horn and Associates, Inc. shall be without liability to Kimley-Horn and Associates, Inc.

CONFIGURATION A

22' OF PAVEMENT



CHALMERS DRIVE
TRAFFIC CALMING
NASHVILLE, TN



DESIGNED BY:	JLH
DRAWN BY:	AMM
CHECKED BY:	NDOT
DATE:	2/9/2024
KIMLEY-HORN PROJECT NO.	118900046

DETAIL

SHEET NUMBER
04