

### ESTIMATED QUANTITIES

#### SPEED CUSHIONS

6' X 10.5' SPEED CUSHION WITH ONE ARROW	20
---	----

#### SIGNING

W17-1 (VAR.) "SPEED CUSHIONS AHEAD" SIGN (30" X 30")	2
W13-1P "20 M.P.H." SIGN (18" X 18")	2
W1-aL "20 M.P.H." SIGN (RELOCATED)	1
R5-2 SIGN (RELOCATED)	1
R2-1 "25 M.P.H." SIGN (RELOCATED)	1

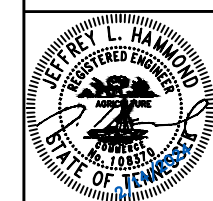
#### PAVEMENT MARKINGS AND DELINEATORS

"HUMPS AHEAD" PAVEMENT MARKING	4
--------------------------------	---

**NOTE:** ALL LOCATIONS ARE REFERENCED FROM CENTERLINE OF DRIVEWAYS OR OTHER LANDMARKS TO THE CENTER OF SPEED CUSHIONS OR SIGNS.

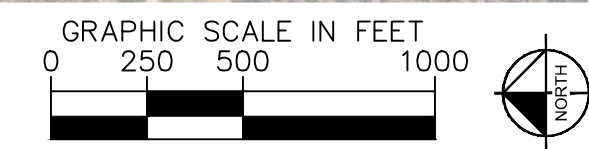
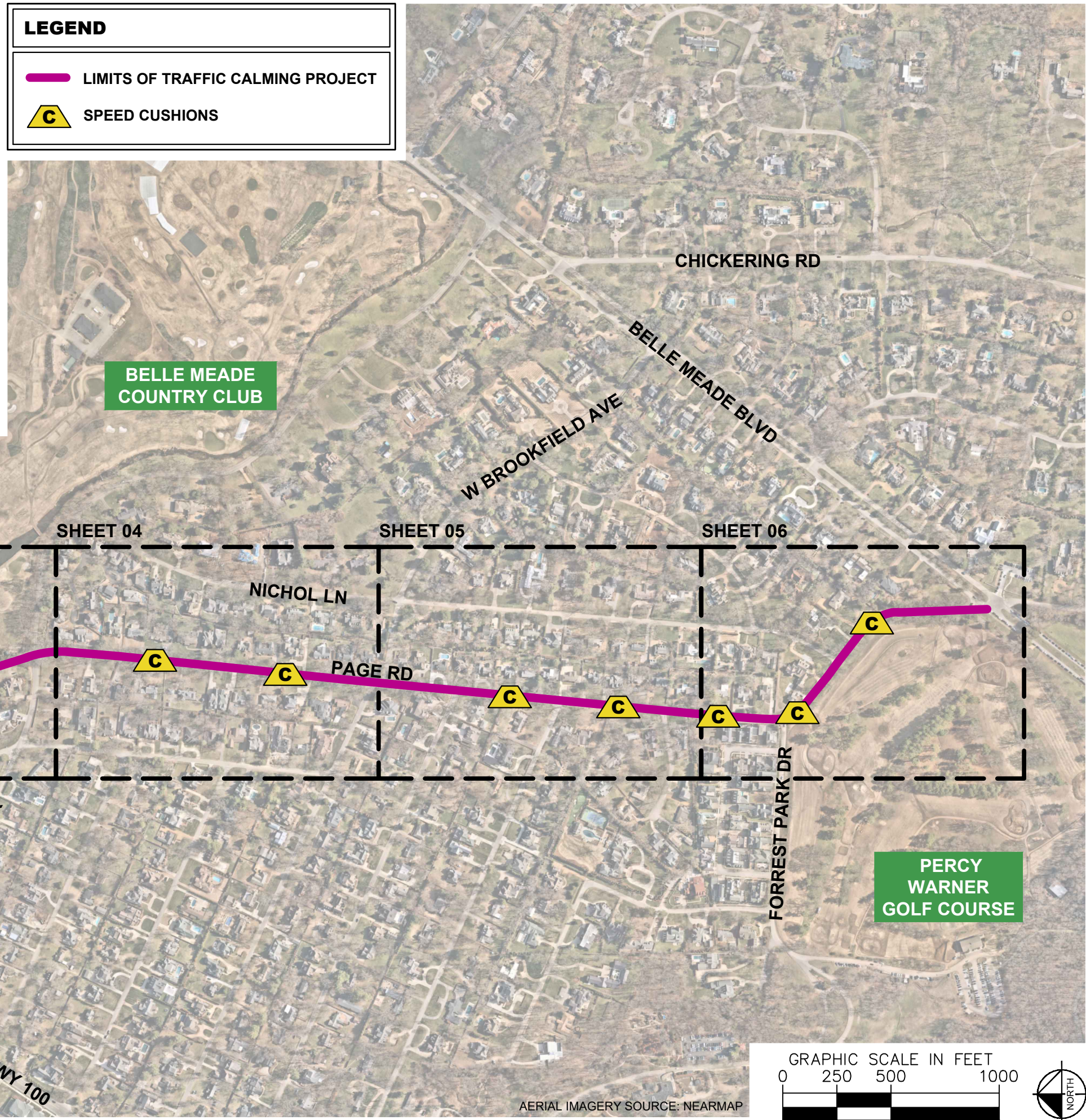
### LEGEND

-  LIMITS OF TRAFFIC CALMING PROJECT
-  SPEED CUSHIONS



DESIGNED BY: JLH  
 DRAWN BY: TWR  
 CHECKED BY: NDOT  
 DATE: 2/14/2024  
 KIMLEY-HORN PROJECT NO. 118900036

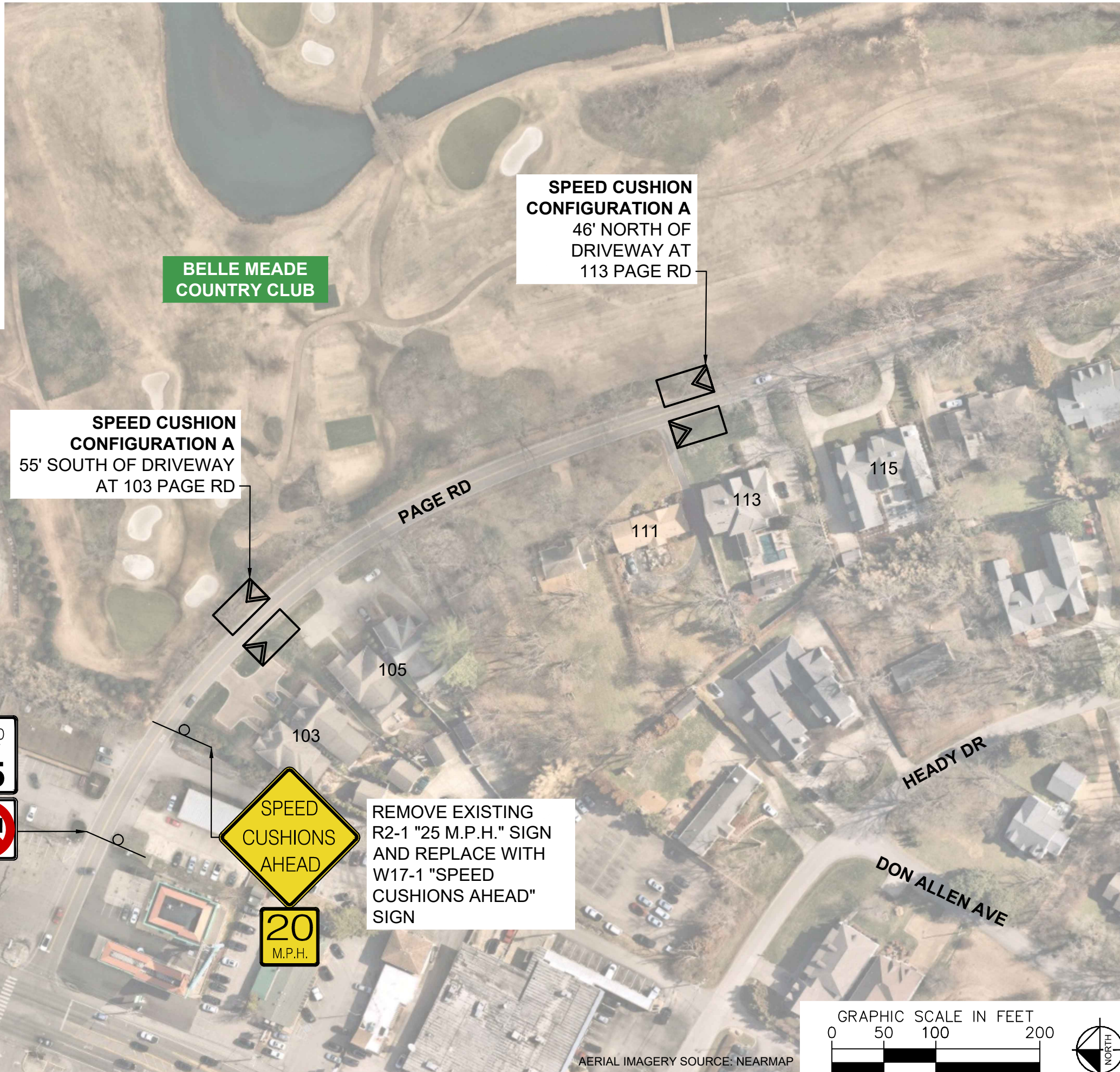
**KEY**  
 SHEET NUMBER  
**01**



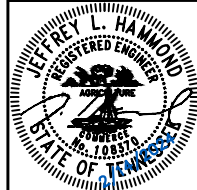
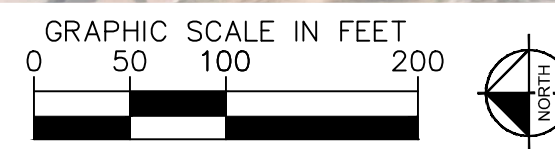
AERIAL IMAGERY SOURCE: NEARMAP

This document, together with the concepts and designs presented herein, is intended only for the specific purpose and client for which it was prepared. Reuse of and improper reliance on this document without written authorization and adaptation by Kimley-Horn and Associates, Inc. shall be without liability to Kimley-Horn and Associates, Inc.

**SPEED CUSHIONS**



AERIAL IMAGERY SOURCE: NEARMAP



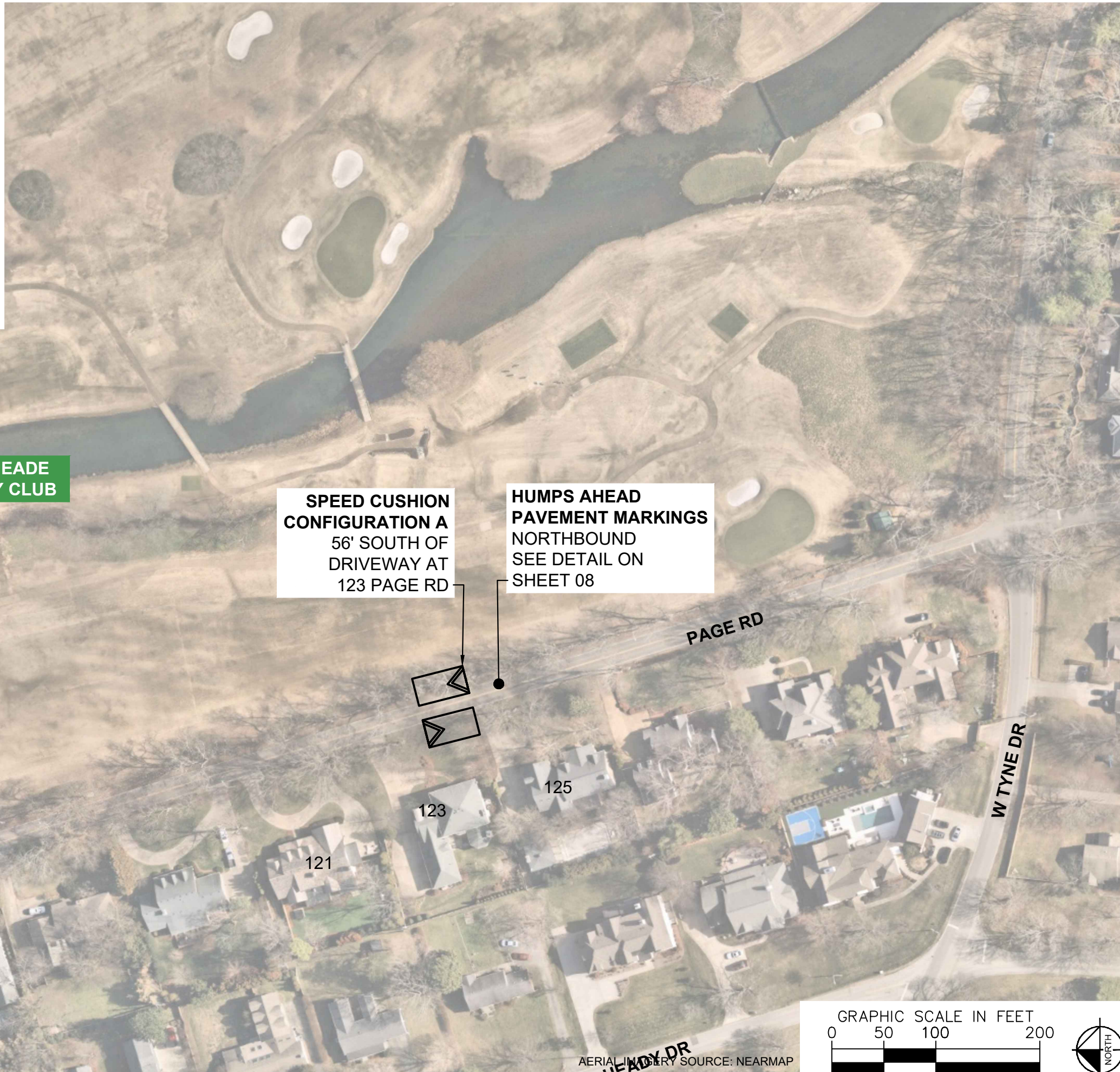
DESIGNED BY: JLH  
DRAWN BY: TWR  
CHECKED BY: NDOT  
DATE: 2/14/2024  
KIMLEY-HORN PROJECT NO. 11880036

**CONCEPT**

SHEET NUMBER  
**02**

This document, together with the concepts and designs presented herein, is intended only for the specific purpose and client for which it was prepared. Reuse of and improper reliance on this document without written authorization and adaptation by Kimley-Horn and Associates, Inc. shall be without liability to Kimley-Horn and Associates, Inc.

**SPEED CUSHIONS**



**BELLE MEADE  
COUNTRY CLUB**

**SPEED CUSHION  
CONFIGURATION A**  
56' SOUTH OF  
DRIVEWAY AT  
123 PAGE RD

**HUMPS AHEAD  
PAVEMENT MARKINGS**  
NORTHBOUND  
SEE DETAIL ON  
SHEET 08

**SEE SHEET 02  
FOR LOCATION**

PAGE RD

W TYNE DR

123

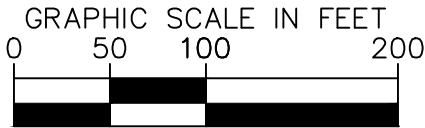
125

121

115

113

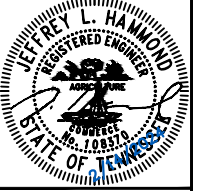
111



AERIAL IMAGERY SOURCE: NEARMAP

**NDOT**

**PAGE ROAD  
TRAFFIC CALMING**  
NASHVILLE, TN



DESIGNED BY:	JLH
DRAWN BY:	TWR
CHECKED BY:	NDOT
DATE:	2/14/2024
KIMLEY-HORN PROJECT NO.:	11890036

**CONCEPT**  
SHEET NUMBER  
**03**

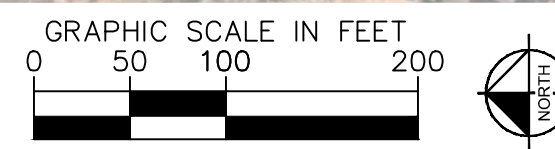
**SPEED CUSHIONS**



**SPEED CUSHION CONFIGURATION A**  
37' NORTH OF DRIVEWAY AT 206 PAGE RD

**SPEED CUSHION CONFIGURATION A**  
63' SOUTH OF DRIVEWAY AT 214 PAGE RD

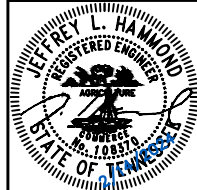
**HUMPS AHEAD PAVEMENT MARKINGS SOUTHBOUND**  
SEE DETAIL ON SHEET 08



AERIAL IMAGERY SOURCE: NEARMAP



**PAGE ROAD TRAFFIC CALMING**  
NASHVILLE, TN

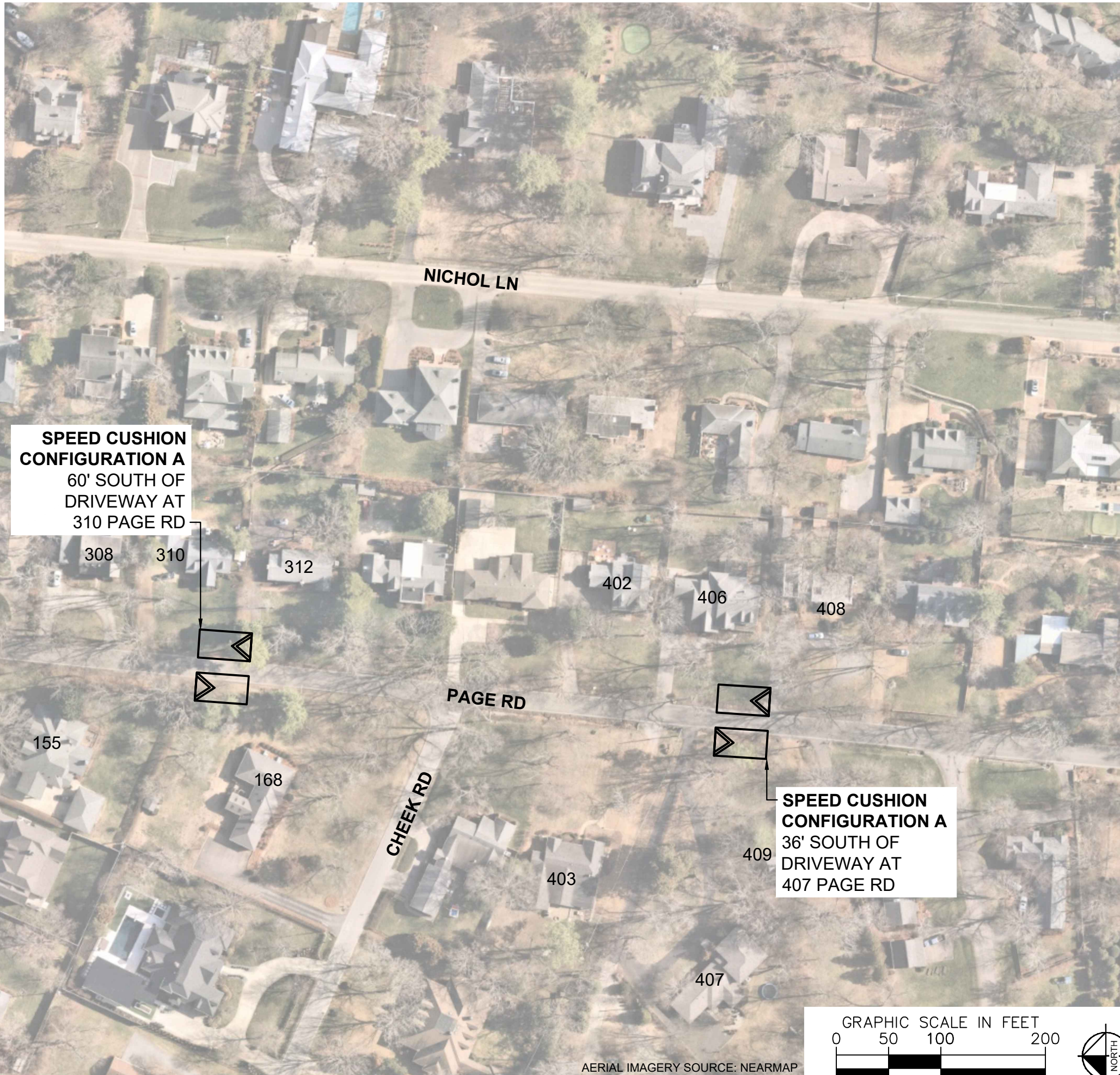


DESIGNED BY: JLH  
DRAWN BY: TWR  
CHECKED BY: NDOT  
DATE: 2/14/2024  
KIMLEY-HORN PROJECT NO. 118900036

**CONCEPT**  
SHEET NUMBER  
**04**

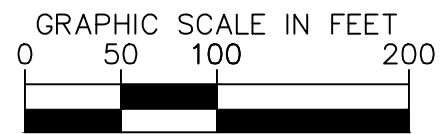
This document, together with the concepts and designs presented herein, is intended only for the specific purpose and client for which it was prepared. Reuse of and improper reliance on this document without written authorization and adaptation by Kimley-Horn and Associates, Inc. shall be without liability to Kimley-Horn and Associates, Inc.

**SPEED CUSHIONS**



**SPEED CUSHION  
CONFIGURATION A**  
60' SOUTH OF  
DRIVEWAY AT  
310 PAGE RD

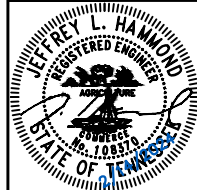
**SPEED CUSHION  
CONFIGURATION A**  
36' SOUTH OF  
DRIVEWAY AT  
407 PAGE RD



AERIAL IMAGERY SOURCE: NEARMAP

**NDOT**

**PAGE ROAD  
TRAFFIC CALMING**  
NASHVILLE, TN



DESIGNED BY:	JLH
DRAWN BY:	TWR
CHECKED BY:	NDOT
DATE:	2/14/2024
KIMLEY-HORN PROJECT NO.:	118900036

**CONCEPT**  
SHEET NUMBER  
**05**

This document, together with the concepts and designs presented herein, is intended only for the specific purpose and client for which it was prepared. Reuse of and improper reliance on this document without written authorization and adaptation by Kimley-Horn and Associates, Inc. shall be without liability to Kimley-Horn and Associates, Inc.

Drawing name: K:\NSH\_TPTO\118900036 - traffic calming3 - design - december 2022 cycle\17 - page road\Design\CAD\plansheets\17 - Page Road - Traffic Calming.dwg 05-CONCEPT Feb 14, 2024 8:56am by: David Greaves

**SPEED CUSHIONS**



**SPEED CUSHION CONFIGURATION A**  
58' NORTH OF DRIVEWAY AT 414 PAGE RD

**SPEED CUSHION CONFIGURATION A**  
52' SOUTH OF DRIVEWAY AT 420 PAGE RD

**SPEED CUSHION CONFIGURATION A**  
45' NORTH OF THE SOUTHERN END OF BRICK WALL AT 1211 BELLE MEADE BLVD

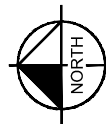
REPLACE EXISTING R7-4 "NO PARKING" SIGN WITH W1-aL "20 M.P.H." SIGN

**"HUMPS AHEAD" PAVEMENT MARKINGS SOUTHBOUND**  
SEE DETAIL ON SHEET 08

**"HUMPS AHEAD" PAVEMENT MARKINGS NORTHBOUND**  
SEE DETAIL ON SHEET 08

**PERCY WARNER GOLF COURSE**

GRAPHIC SCALE IN FEET  
0 52 104 208



AERIAL IMAGERY SOURCE: NEARMAP



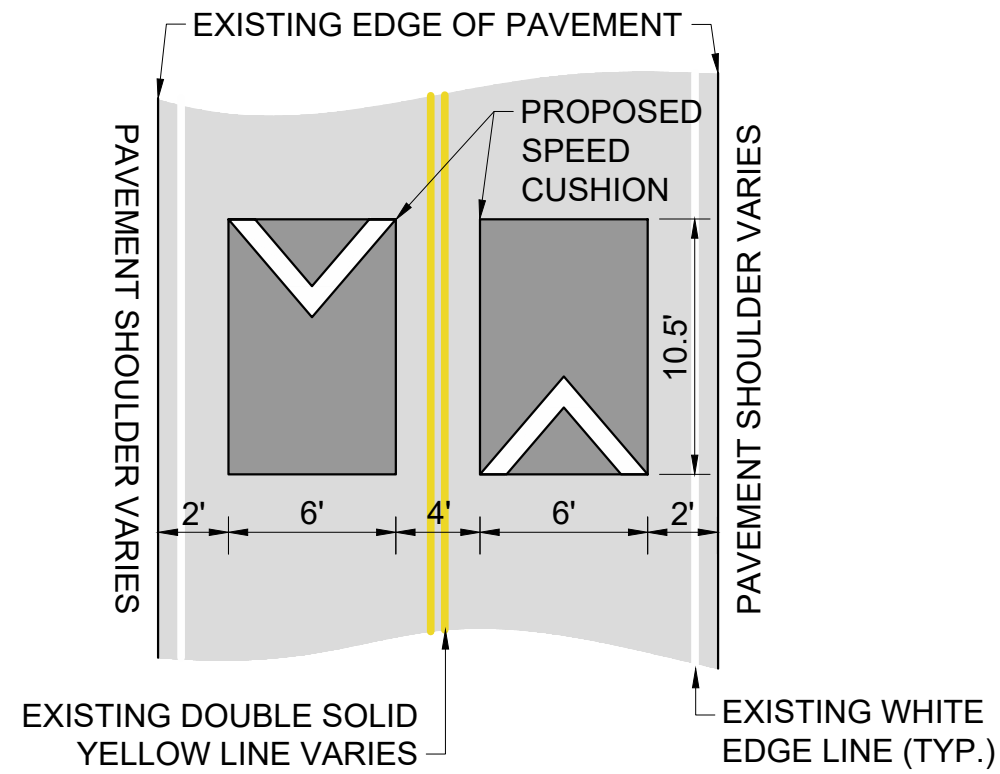
DESIGNED BY: JLH  
DRAWN BY: TWR  
CHECKED BY: NDOT  
DATE: 2/14/2024  
KIMLEY-HORN PROJECT NO. 118900036

**CONCEPT**  
SHEET NUMBER  
**06**

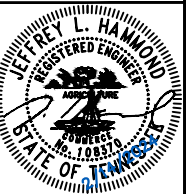
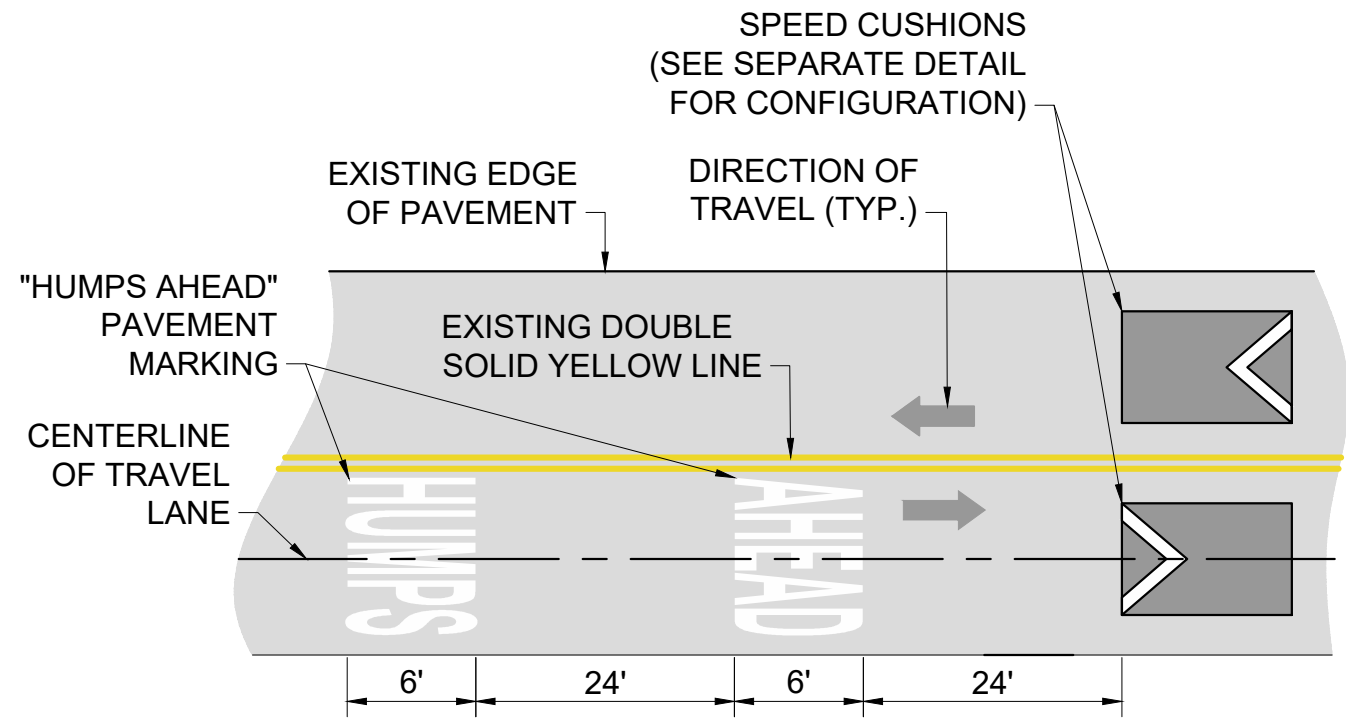
This document, together with the concepts and designs presented herein, is intended only for the specific purpose and client for which it was prepared. Reuse of and improper reliance on this document without written authorization and adaptation by Kimley-Horn and Associates, Inc. shall be without liability to Kimley-Horn and Associates, Inc.

### CONFIGURATION A

20' OF PAVEMENT



### "HUMPS AHEAD" PAVEMENT MARKINGS



DESIGNED BY: JLH  
DRAWN BY: TWR  
CHECKED BY: NDOT  
DATE: 2/14/2024  
KIMLEY-HORN PROJECT NO. 118800036

**DETAIL**

SHEET NUMBER  
**07**

This document, together with the concepts and designs presented herein, is intended only for the specific purpose and client for which it was prepared. Reuse of and improper reliance on this document without written authorization and adaptation by Kimley-Horn and Associates, Inc. shall be without liability to Kimley-Horn and Associates, Inc.