

### ESTIMATED QUANTITIES

#### SPEED CUSHIONS

6' X 10.5' SPEED CUSHION WITH ONE ARROW	6
6' X 10.5' SPEED CUSHION WITH DOUBLE ARROW	1

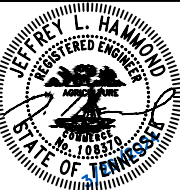
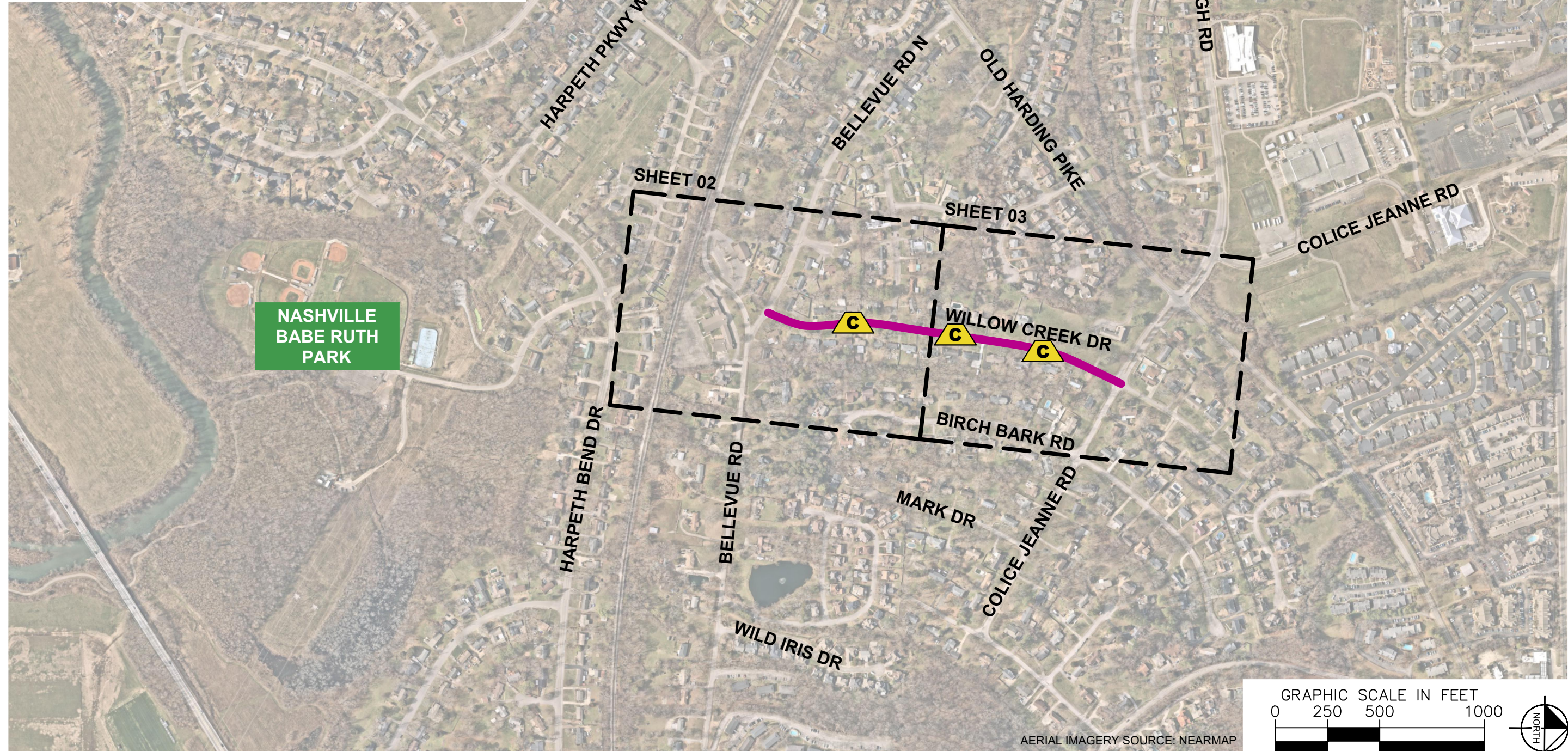
#### SIGNING

W17-1 (VAR.) "SPEED CUSHION" SIGN (30" X 30")	2
W17-1 (VAR.) "SPEED CUSHION AHEAD" SIGN (30" X 30")	2
W13-1P "20 M.P.H" SIGN (18" X 18")	4

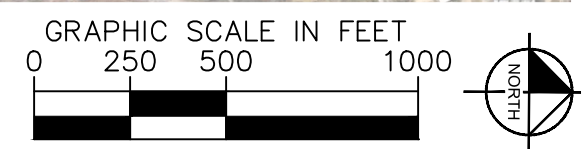
**NOTE:** ALL LOCATIONS ARE REFERENCED FROM CENTERLINE OF DRIVEWAYS OR OTHER LANDMARKS TO THE CENTER OF SPEED CUSHIONS OR SIGNS.

### LEGEND

-  LIMITS OF TRAFFIC CALMING PROJECT
-  SPEED CUSHIONS



DESIGNED BY:	JLH
DRAWN BY:	JCB
CHECKED BY:	NDOT
DATE:	3/28/2024
KIMLEY-HORN PROJECT NO. 118800046	

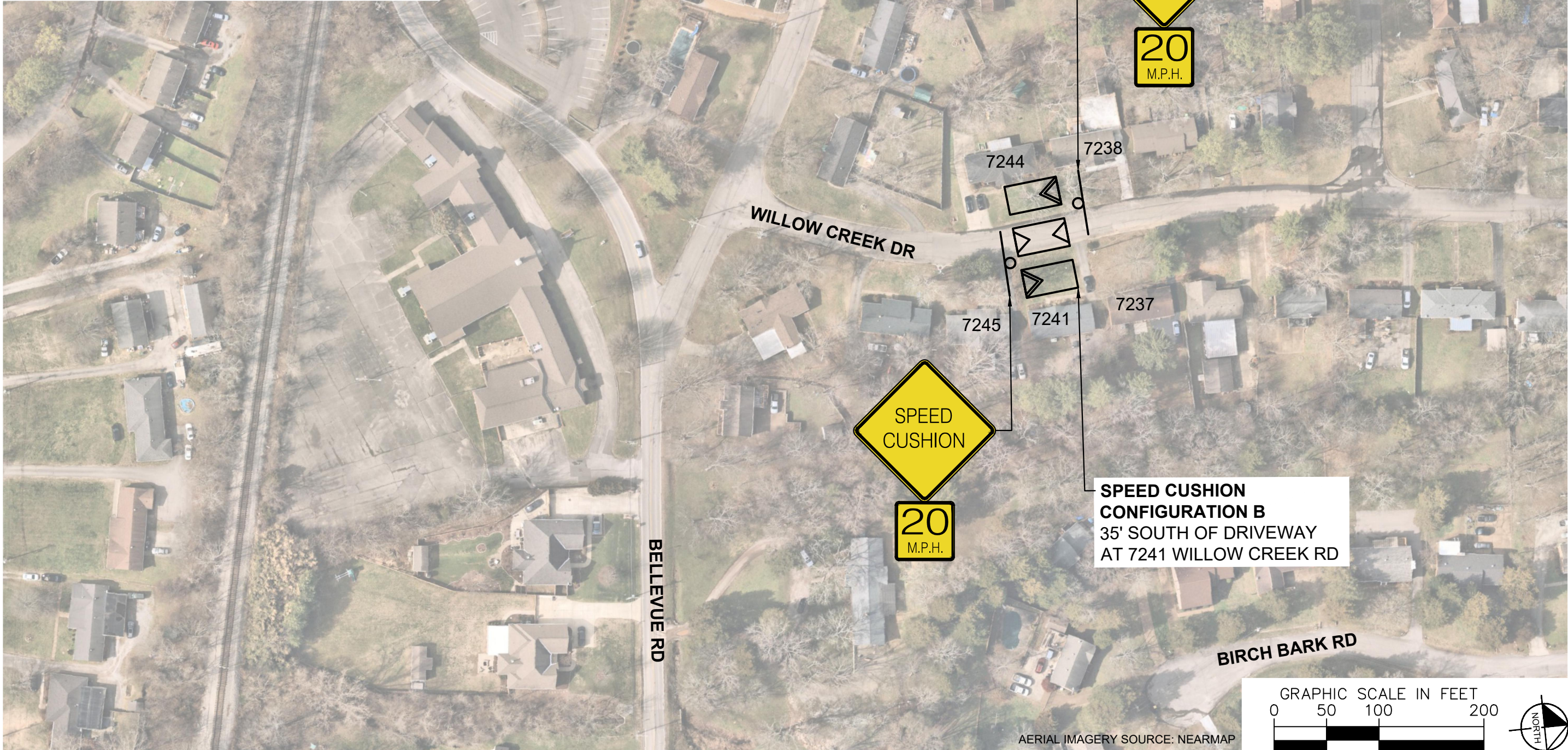


<b>KEY</b>
SHEET NUMBER
<b>01</b>

This document, together with the concepts and designs presented herein, is intended only for the specific purpose and client for which it was prepared. Reuse of and improper reliance on this document without written authorization and adaptation by Kimley-Horn and Associates, Inc. shall be without liability to Kimley-Horn and Associates, Inc.



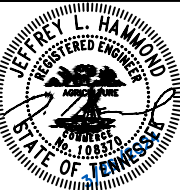
This document, together with the concepts and designs presented herein, is intended only for the specific purpose and client for which it was prepared. Reuse of and improper reliance on this document without written authorization and adaptation by Kimley-Horn and Associates, Inc. shall be without liability to Kimley-Horn and Associates, Inc.



AERIAL IMAGERY SOURCE: NEARMAP



WILLOW CREEK DRIVE  
TRAFFIC CALMING  
NASHVILLE, TN



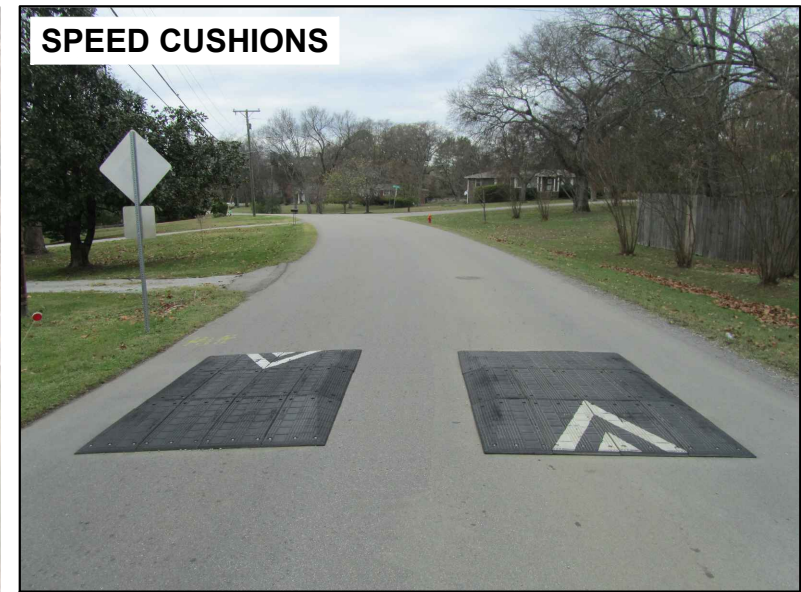
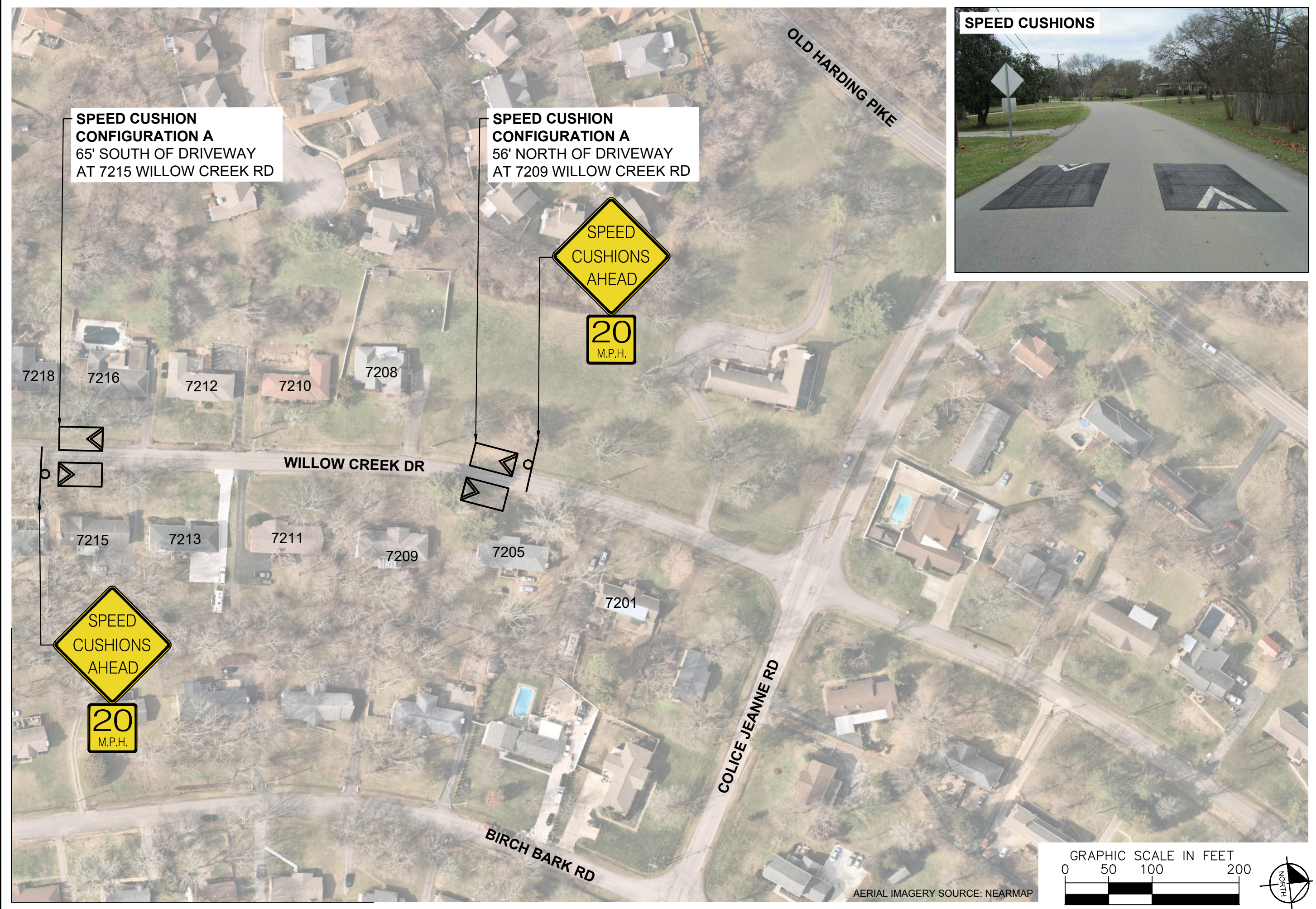
DESIGNED BY: JLH  
DRAWN BY: JCB  
CHECKED BY: NDOT  
DATE: 3/28/2024  
KIMLEY-HORN PROJECT NO. 118900046

CONCEPT

SHEET NUMBER  
02



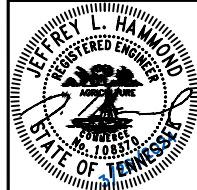
This document, together with the concepts and designs presented herein, is intended only for the specific purpose and client for which it was prepared. Reuse of and improper reliance on this document without written authorization and adaptation by Kimley-Horn and Associates, Inc. shall be without liability to Kimley-Horn and Associates, Inc.



SPEED CUSHIONS



WILLOW CREEK DRIVE  
TRAFFIC CALMING  
NASHVILLE, TN



DESIGNED BY: JLH  
DRAWN BY: JCB  
CHECKED BY: NDOT  
DATE: 3/28/2024  
KIMLEY-HORN PROJECT NO. 118800046

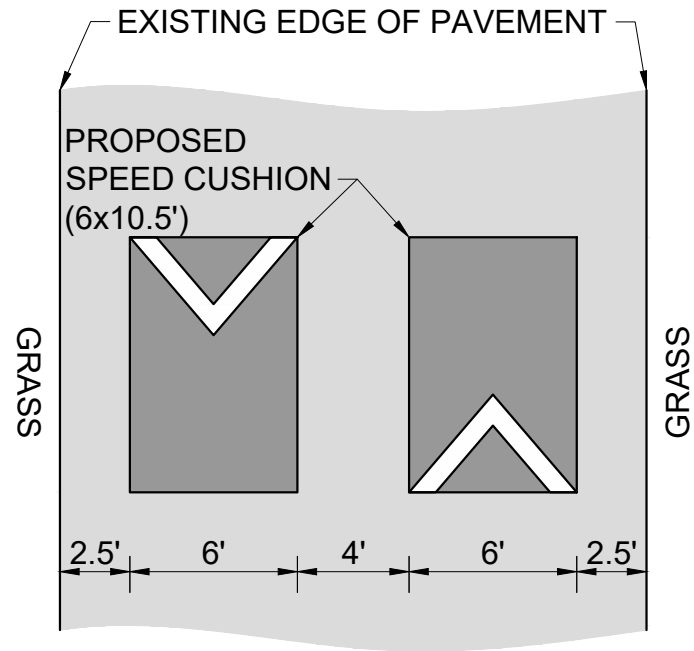
CONCEPT

SHEET NUMBER  
03

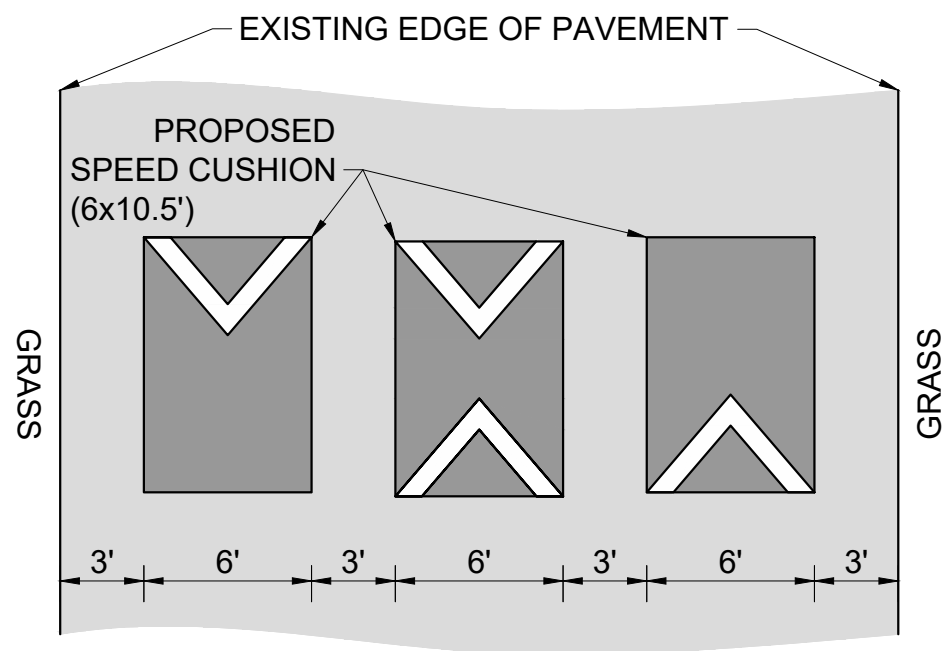


This document, together with the concepts and designs presented herein, as an instrument of service, is intended only for the specific purpose and client for which it was prepared. Reuse of and improper reliance on this document without written authorization and adaptation by Kimley-Horn and Associates, Inc. shall be without liability to Kimley-Horn and Associates, Inc.

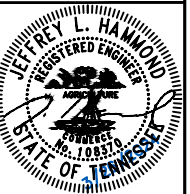
### CONFIGURATION A 21' OF PAVEMENT



### CONFIGURATION B 30' OF PAVEMENT



WILLOW CREEK DRIVE  
TRAFFIC CALMING  
NASHVILLE, TN



DESIGNED BY:	JLH
DRAWN BY:	JCB
CHECKED BY:	NDOT
DATE:	3/28/2024
KIMLEY-HORN PROJECT NO.:	118800046

**DETAIL**

SHEET NUMBER  
**04**