


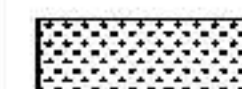





PAVEMENT MARKING & SIGNAGE NOTES

1. THE TOP OF THE SIGN FOOTINGS SHALL BE PLACED LEVEL WITH THE GROUND LINE.
2. AFTER THE SIGN LOCATIONS HAVE BEEN STAKED, BUT PRIOR TO ORDERING ANY MATERIAL FOR THE SUPPORTS, THERE SHALL BE A FIELD INSPECTION AND APPROVAL BY THE ENGINEER.
3. THE LETTERS, DIGITS, ARROWS, BORDERS, AND ALPHABET ACCESSORIES ON ALL FLAT SHEET SIGNS SHALL BE APPLIED BY SILK SCREENING PROCESSES EXCEPT THAT OUT-OUT DIRECT APPLIED COP SHALL BE USED ON ALL FLAT SHEET SIGNS WITH A GREEN BACKGROUND, OR BROWN BACKGROUND.
4. ALL SIGNAGE TO BE IN ACCORDANCE WITH THE MANUAL OF UNIFORM TRAFFIC CONTROL DEVICES (CURRENT EDITION). COORDINATION WITH METRO PUBLIC WORKS AND T.D.O.T. STANDARDS AND SPECIFICATIONS WILL ALSO BE IN AGREEMENT WITH ROADWAY DESIGNATIONS.
5. SIGNS SHALL BE PLACED 2' FROM THE FACE OF CURB TO THE EDGE OF SIGN. SIGN HEIGHT SHALL BE 7' MEASURED FROM THE STREET SURFACE TO THE BOTTOM OF THE SIGN.
6. ALL PAVEMENT MARKINGS SHALL BE THERMOPLASTIC.
7. ALL PAVEMENT MARKINGS AND SIGNS SHALL BE APPROVED BY METRO TRAFFIC AND PARKING PRIOR TO INSTALLATION.

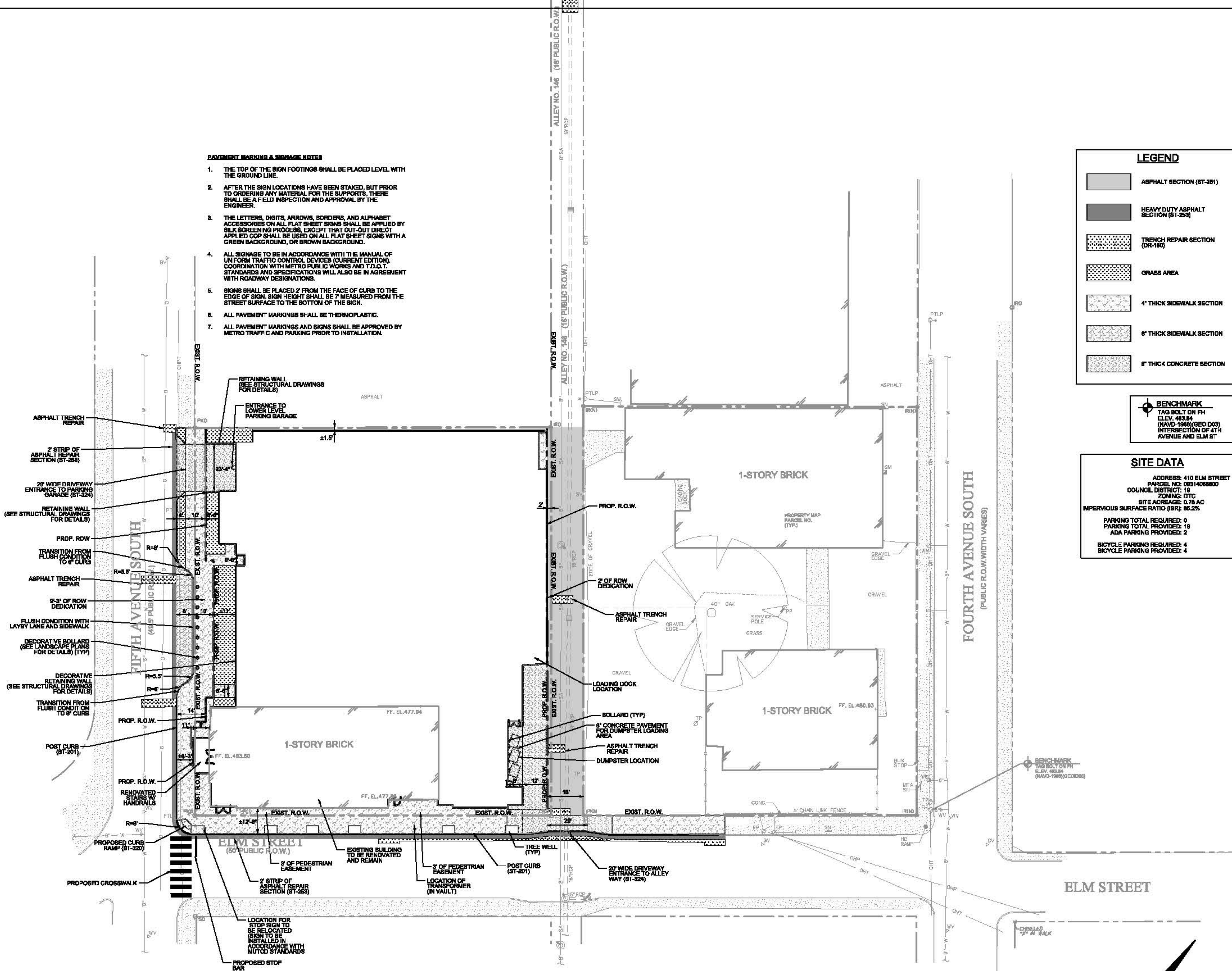
LEGEND

	ASPHALT SECTION (ST-251)
	HEAVY DUTY ASPHALT SECTION (ST-253)
	TRENCH REPAIR SECTION (ST-180)
	GRASS AREA
	4' THICK SIDEWALK SECTION
	6' THICK SIDEWALK SECTION
	8' THICK CONCRETE SECTION

BENCHMARK
TAG BOLT ON FH
ELEV. 483.84
(NAVD 1988) (GEOID08)
INTERSECTION OF 4TH
AVENUE AND ELM ST

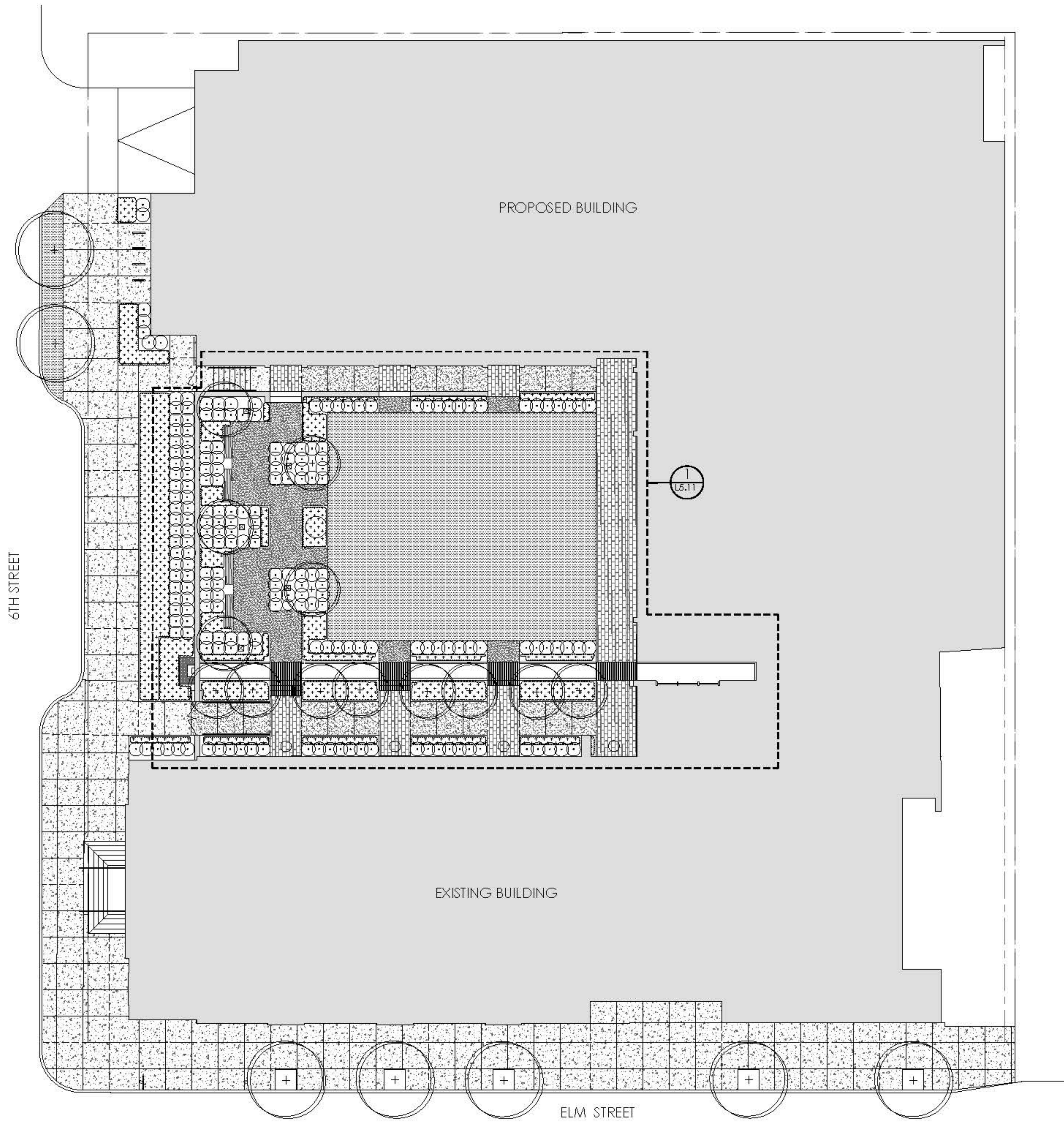
SITE DATA

ADDRESS: 410 ELM STREET
PARCEL NO: 081408800
COUNCIL DISTRICT: 18
ZONING: DTC
SITE AREA: 0.78 AC
IMPERVIOUS SURFACE RATIO (ISR): 88.2%
PARKING TOTAL REQUIRED: 0
PARKING TOTAL PROVIDED: 18
ADA PARKING PROVIDED: 2
BICYCLE PARKING REQUIRED: 4
BICYCLE PARKING PROVIDED: 4



1/19/20 9:25:24 AM
C:\Users\jwhitaker\Documents\17029_19_20811\REV_011_CENTRAL_1.mxd

1/29/2019 2:52:44 PM
c:\Users\jandrea\Documents\17029_110 DETAIL\118_CENTRAL\landscape.rvt



LANDSCAPING REQUIREMENTS LEGEND

	CANOPY TREE: 1" CALIPER TREE, 12' H, 3.5' SP., 868
	ORNAMENTAL/UNDERSTORY TREE: 1.5" GAL, 6' H, 4' SP., 868
	LARGE EVERGREEN SHRUB: 6' H, 4' SP.
	DECIDUOUS SHRUB: 20" H, 2.00' SP., 4" O.C.
	EVERGREEN SHRUB: 30" H, 2.00' SP., 4" O.C.
	GRASSES: 24" H, 2.24' SP., 2 GAL, 24" O.C.
	PERENNIAL/GROUND COVER: 10" H, 2.12' SP., 1 GAL, 12" O.C., 24" O.C.
	SOD

1 LANDSCAPE PLAN

HEAVEN'S DOOR DISTILLERY
410 ELM STREET, NASHVILLE TN 37203

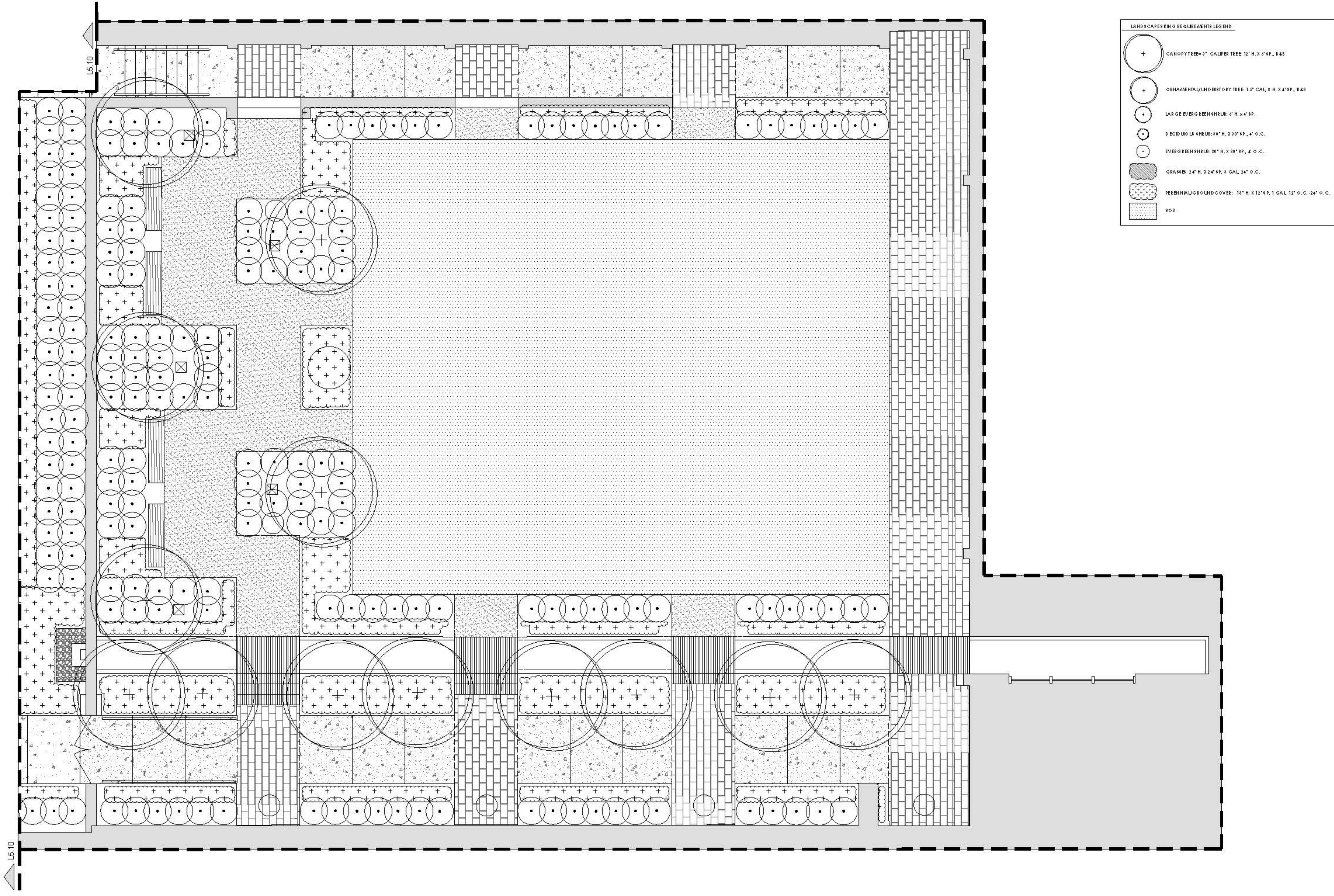
DESIGN DEVELOPMENT
15 FEBRUARY 19

17029

NOT FOR
CONSTRUCTION

LANDSCAPE
PLAN
L510

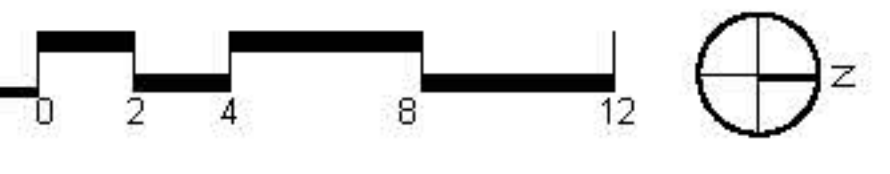
1/29/2019 2:53:44 PM
c:\Users\jacob\OneDrive\Documents\17029_16 DETAIL\18_CENTRAL_JUNCTION.rvt



LANDSCAPE PLANTING REQUIREMENTS LEGEND

	CANOPY TREE- 3" CALIPER TREE, 12" H. X 2" SP., 8&8
	ORNAMENTAL/UNDERSTORY TREE- 1 1/2" CAL, 8 H. X 2 1/4" SP., 8&8
	LARGE EVERGREEN SHRUB- 6" H. X 4" SP.
	DECIDUOUS SHRUB- 30" H. X 30" SP., 4" O.C.
	EVERGREEN SHRUB- 30" H. X 30" SP., 4" O.C.
	GRASS- 24" H. X 24" SP., 3 GAL, 24" O.C.
	PERENNIAL/GROUND COVER- 18" H. X 12" SP., 1 GAL, 12" O.C., 24" O.C.
	SOD

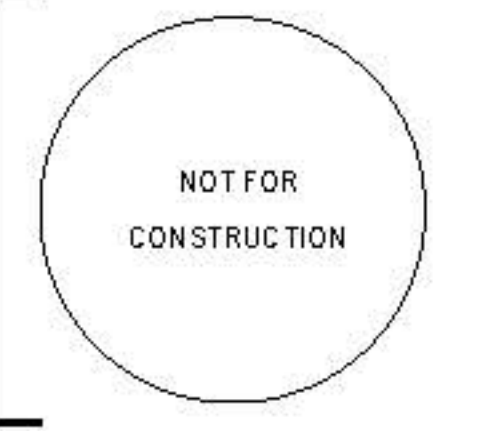
1 COURTYARD LANDSCAPE PLAN



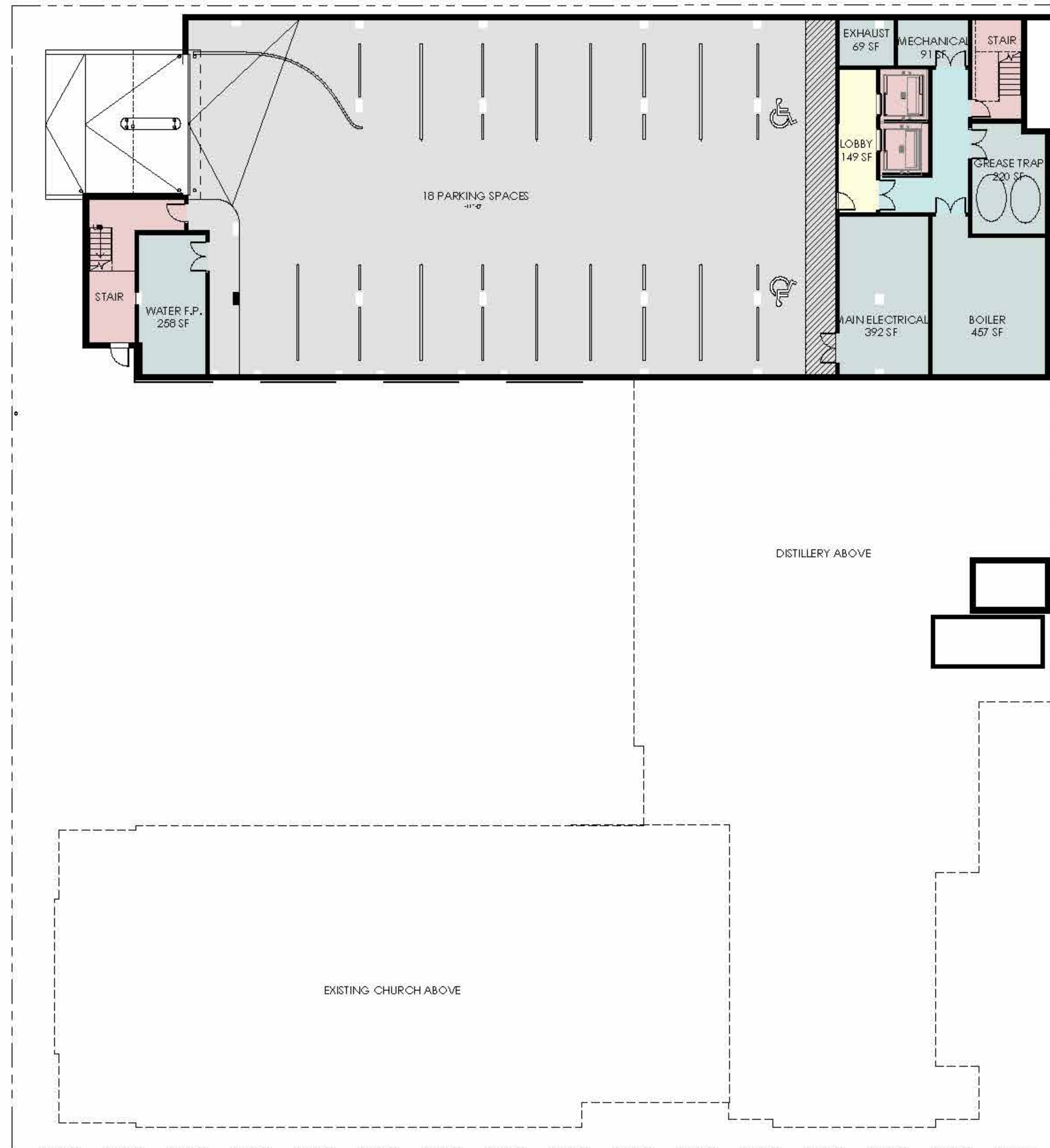
HEAVEN'S DOOR DISTILLERY
410 ELM STREET, NASHVILLE TN 37203

DESIGN DEVELOPMENT
15 FEBRUARY 19

17029



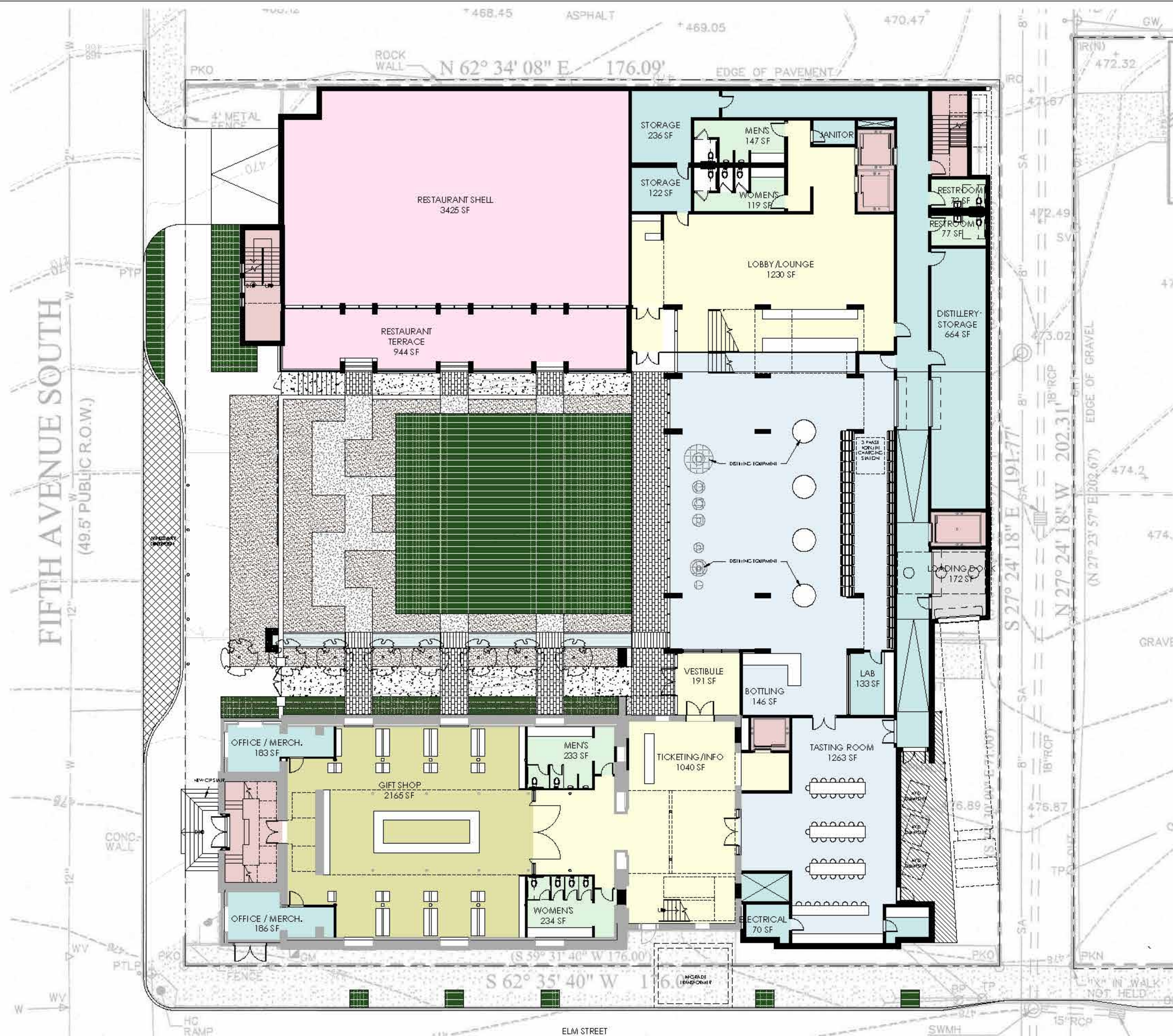
COURTYARD
LANDSCAPE PLAN
L511



16' 12' 8' 4' 0' 16'

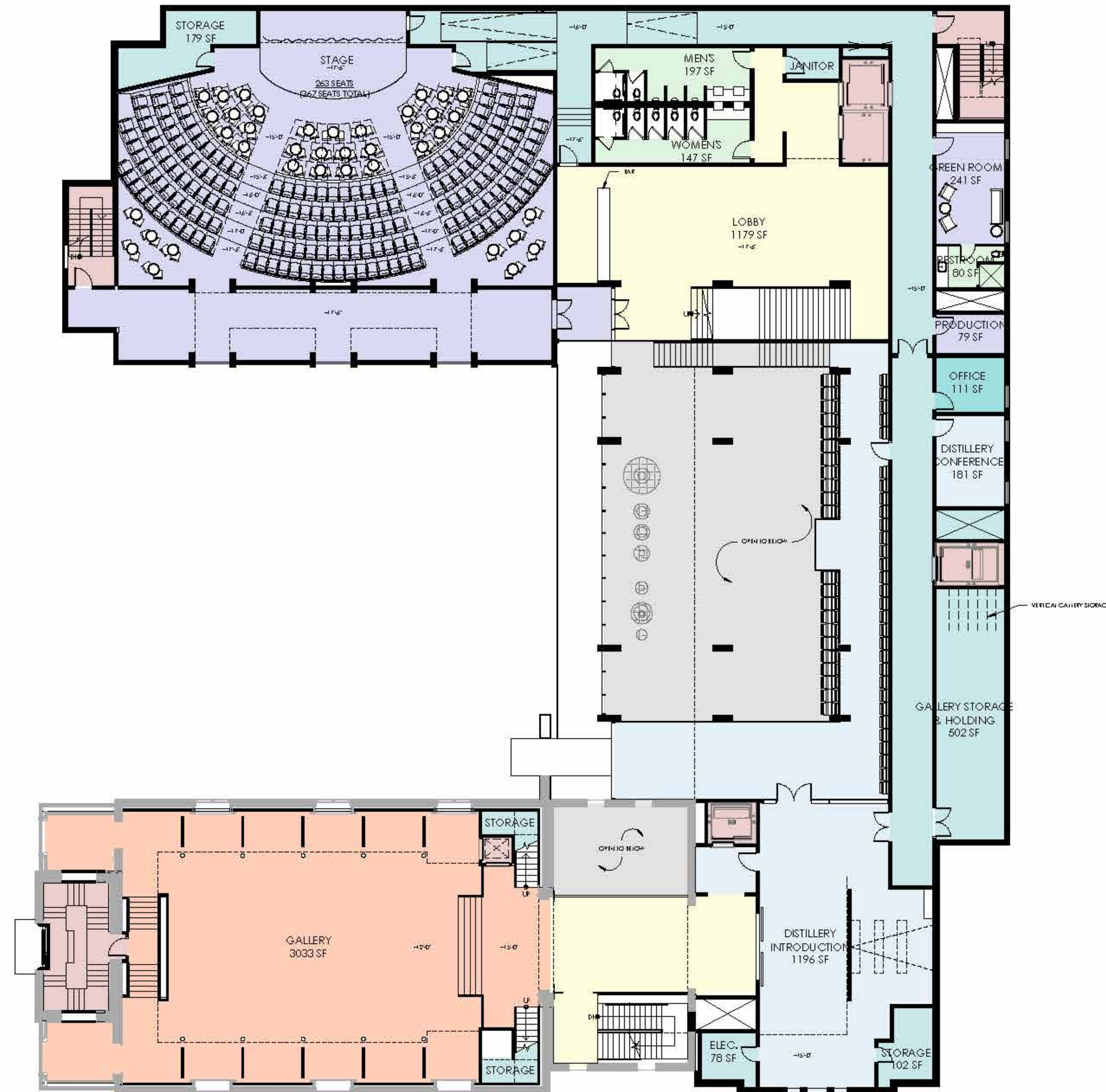
HEAVEN'S DOOR DISTILLERY

BELOW-GRADE PARKING PLAN



HEAVEN'S DOOR DISTILLERY

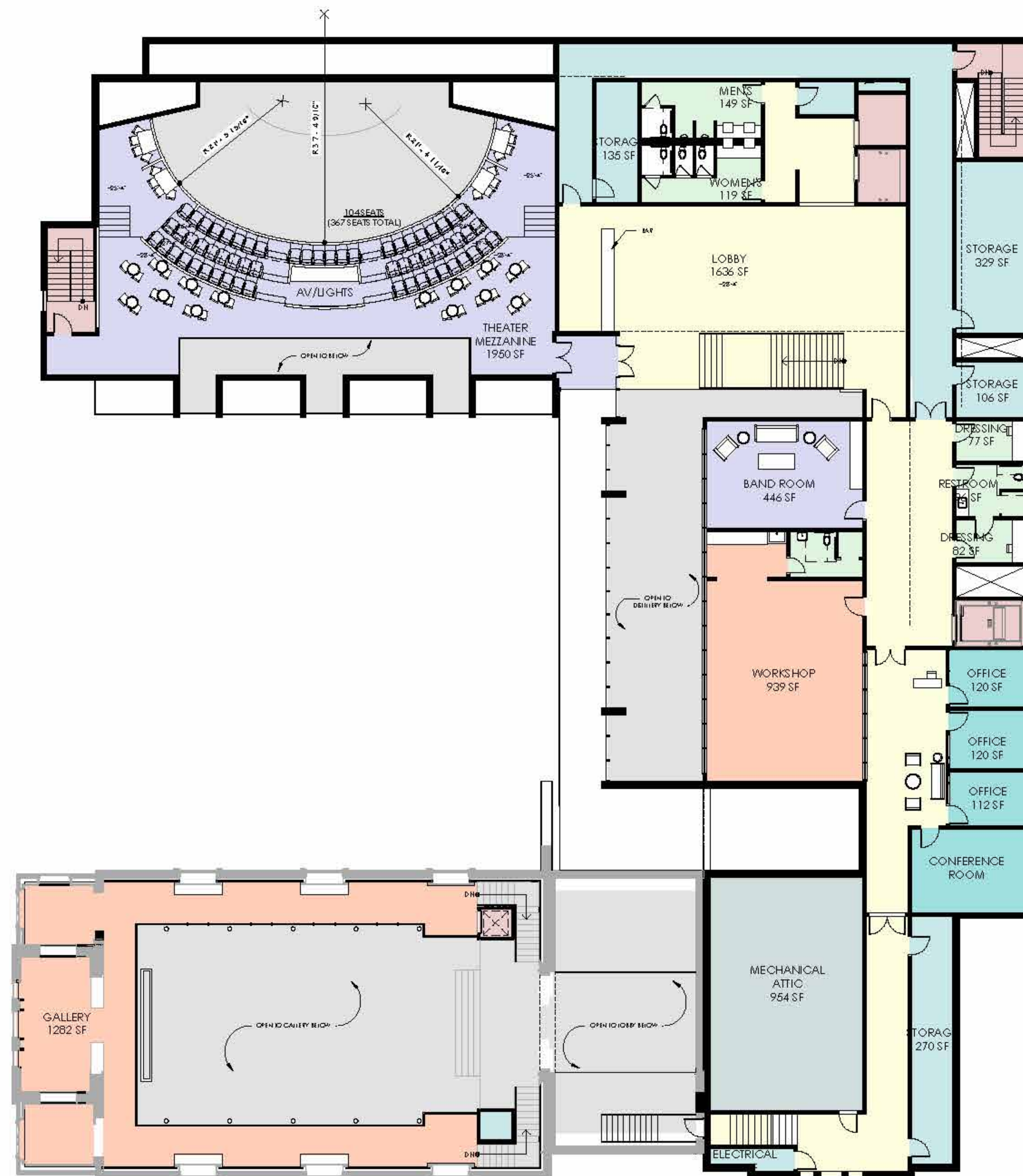
LEVEL 1 PLAN



16' 12' 8' 4' 0' 16'

HEAVEN'S DOOR DISTILLERY

LEVEL 2 PLAN



16' 12' 8' 4' 0' 16'

HEAVEN'S DOOR DISTILLERY

LEVEL 3 PLAN



1 WEST ELEVATION



2 SOUTH ELEVATION

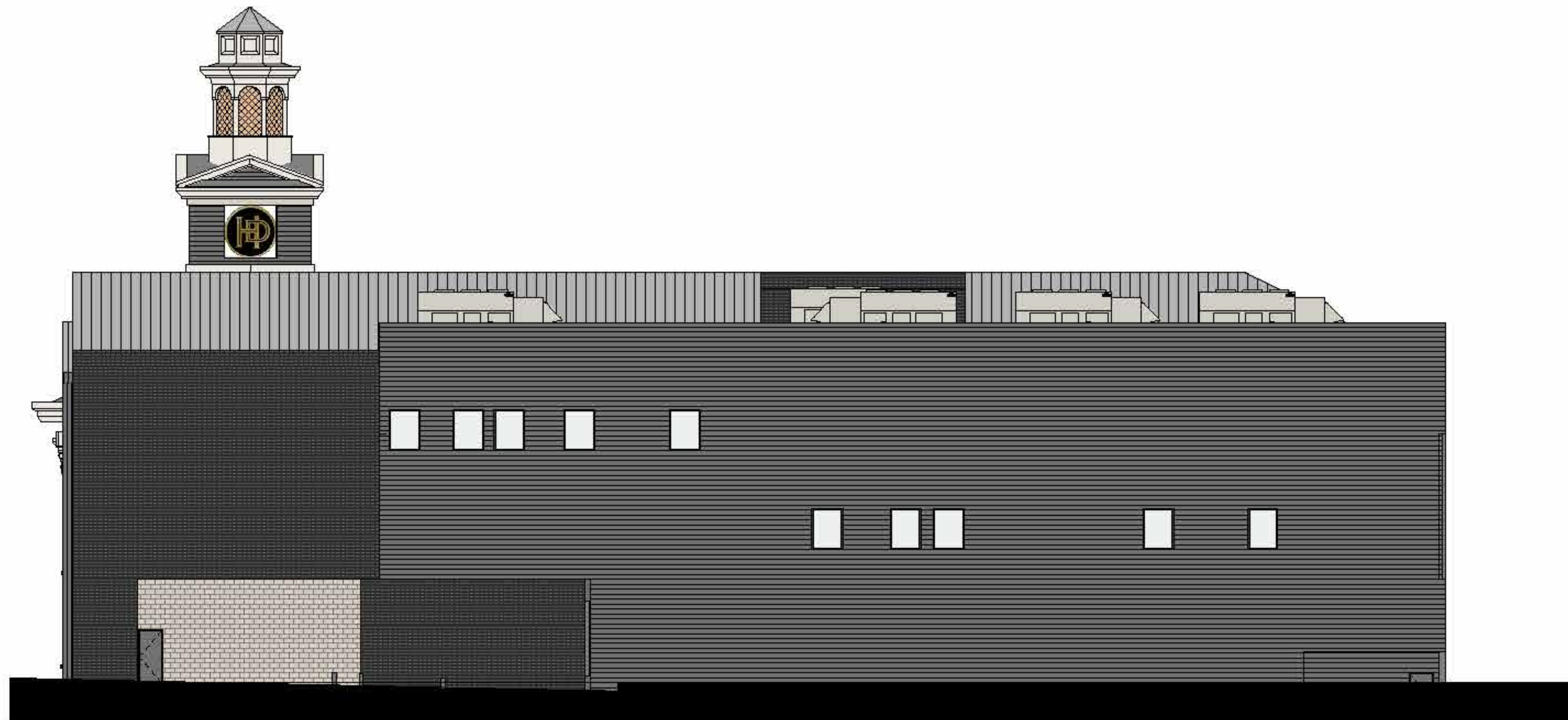
16' 12' 8' 4' 0' 16'

HEAVEN'S DOOR DISTILLERY

ELEVATIONS



2 NORTH ELEVATION



1 EAST ELEVATION

16' 12' 8' 4' 0' 16'

HEAVEN'S DOOR DISTILLERY

ELEVATIONS



1 COURTYARD - SOUTH ELEVATION

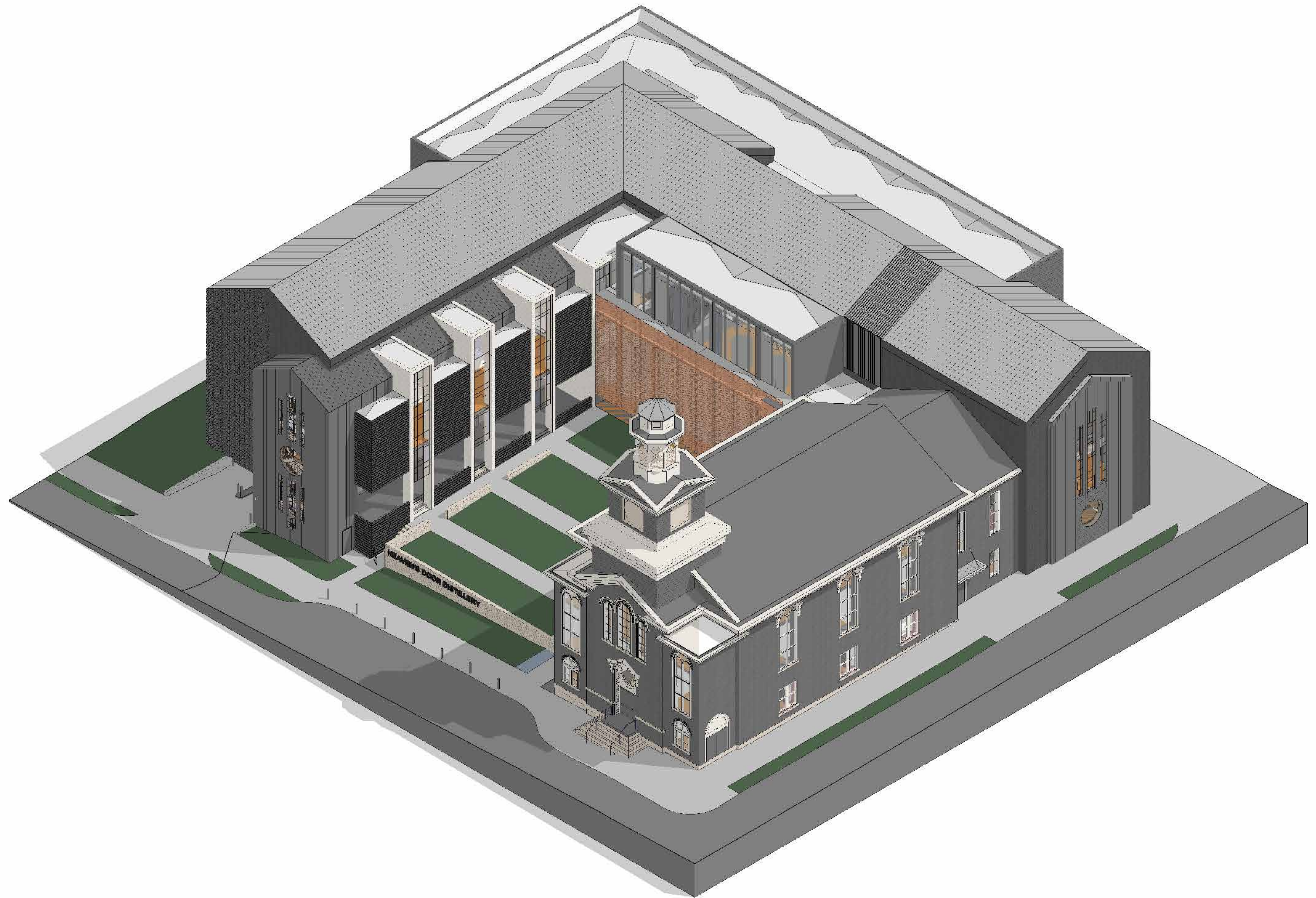


2 COURTYARD - NORTH ELEVATION

16' 12' 8' 4' 0' 16'

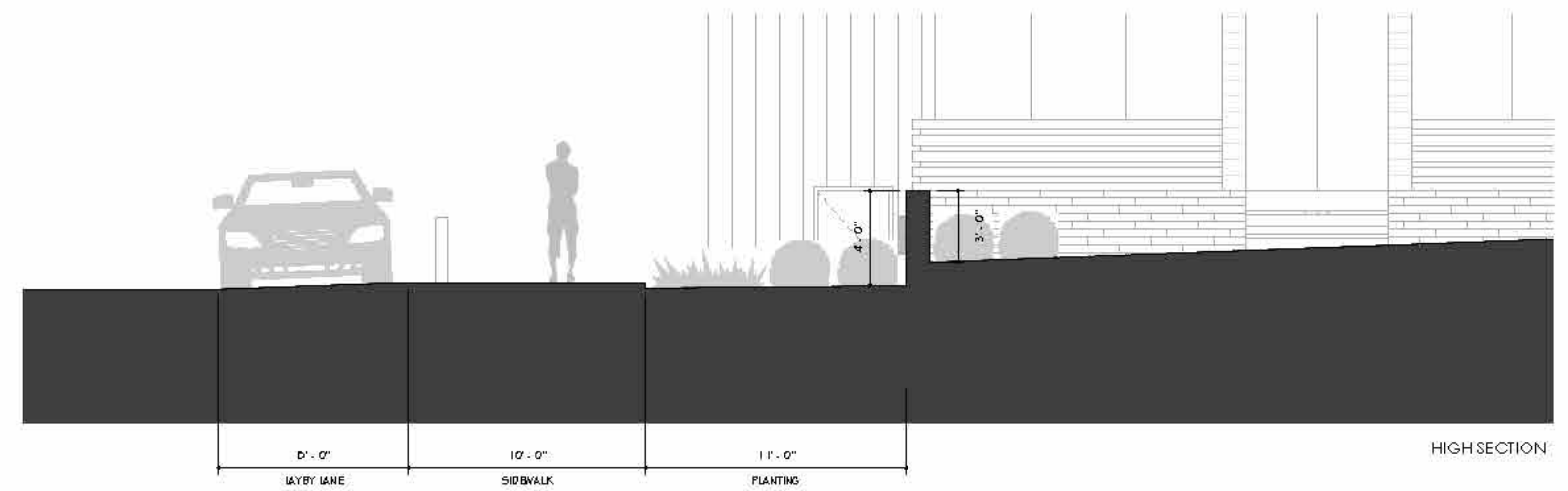
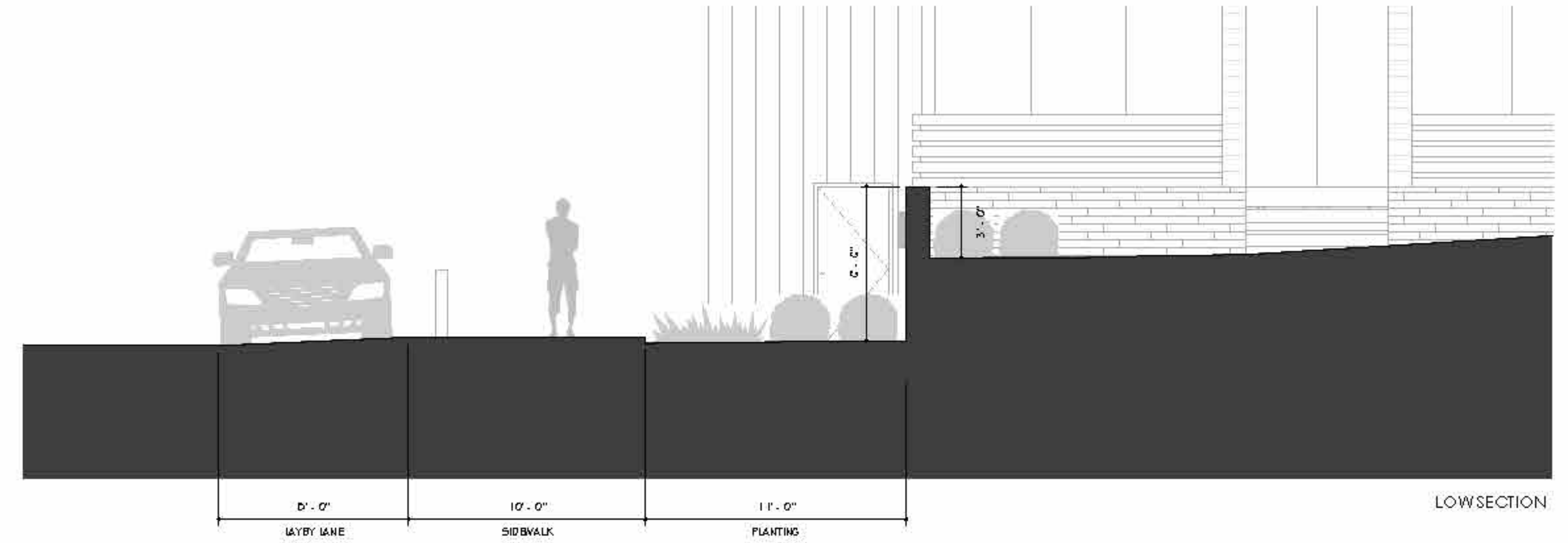
HEAVEN'S DOOR DISTILLERY

COURTYARD ELEVATIONS



HEAVEN'S DOOR DISTILLERY

MASSING SW



HEAVEN'S DOOR DISTILLERY

COURTYARD WALL



1864



1890



1895



1968

HEAVEN'S DOOR DISTILLERY

CHURCH HISTORY



HEAVEN'S DOOR DISTILLERY

RENDERINGS