

# **TB Elimination Program**

*Nashville-Davidson County  
Region*

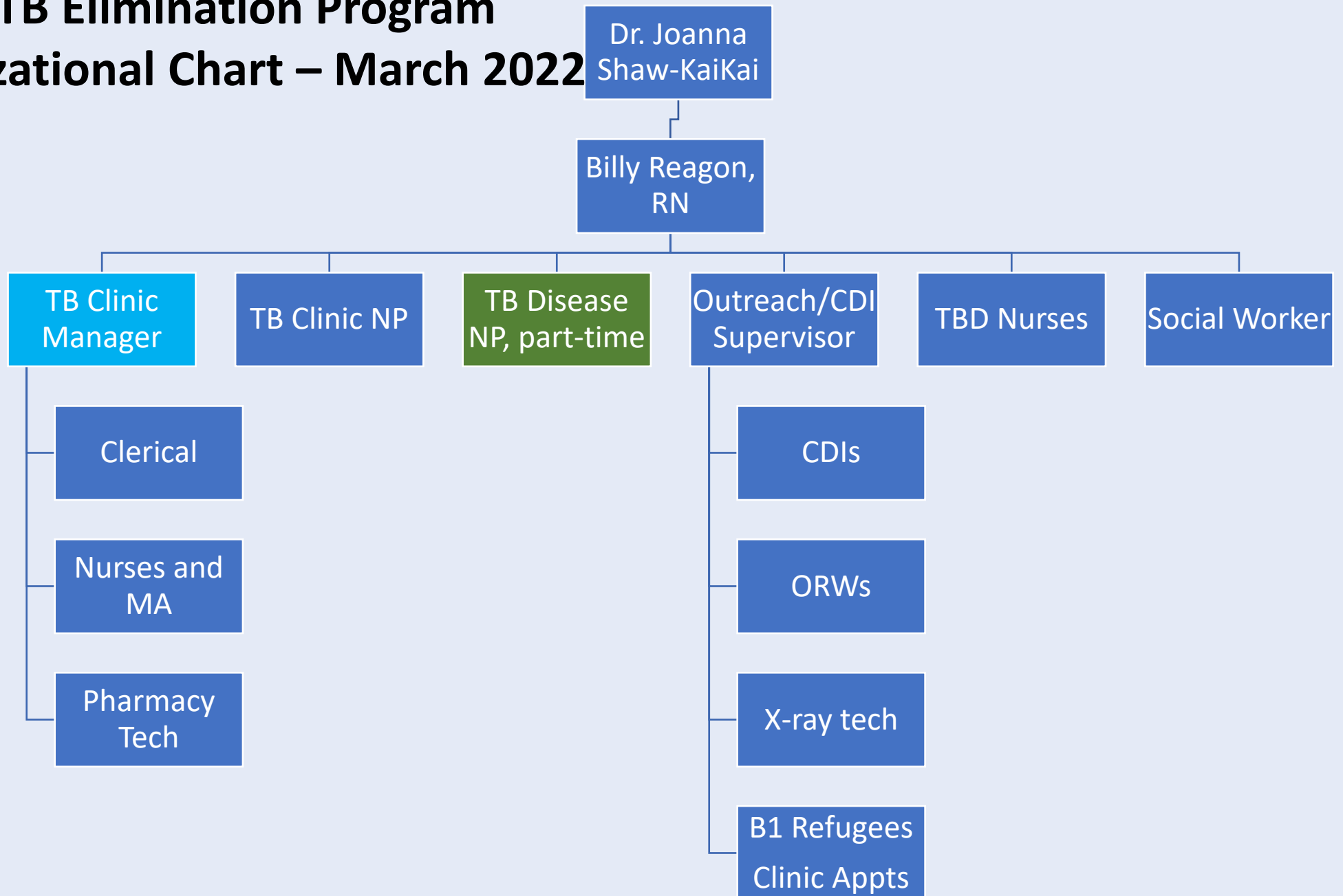
**Board of Health Meeting**

August 11, 2022



**Metro Public Health Dept**  
Nashville / Davidson County  
Protecting, Improving, and Sustaining Health

# MPHD TB Elimination Program Organizational Chart – March 2022



# What is Tuberculosis (TB)?

- *Mycobacterium tuberculosis*
- Primarily acquired via respiratory route - airborne
- 2 stages
  - TB infection (latent)
  - Active (disease)
- Treatable and curable



# TB Infection - Clinic

- More than 250 visits in 2021
  - Positive blood or skin test for TB
  - Contacts of TB disease cases
  - Rehab clearance
  - Immigration & Naturalization

# 2022 TB Epidemiology Summary - Week 31

8/8/2022

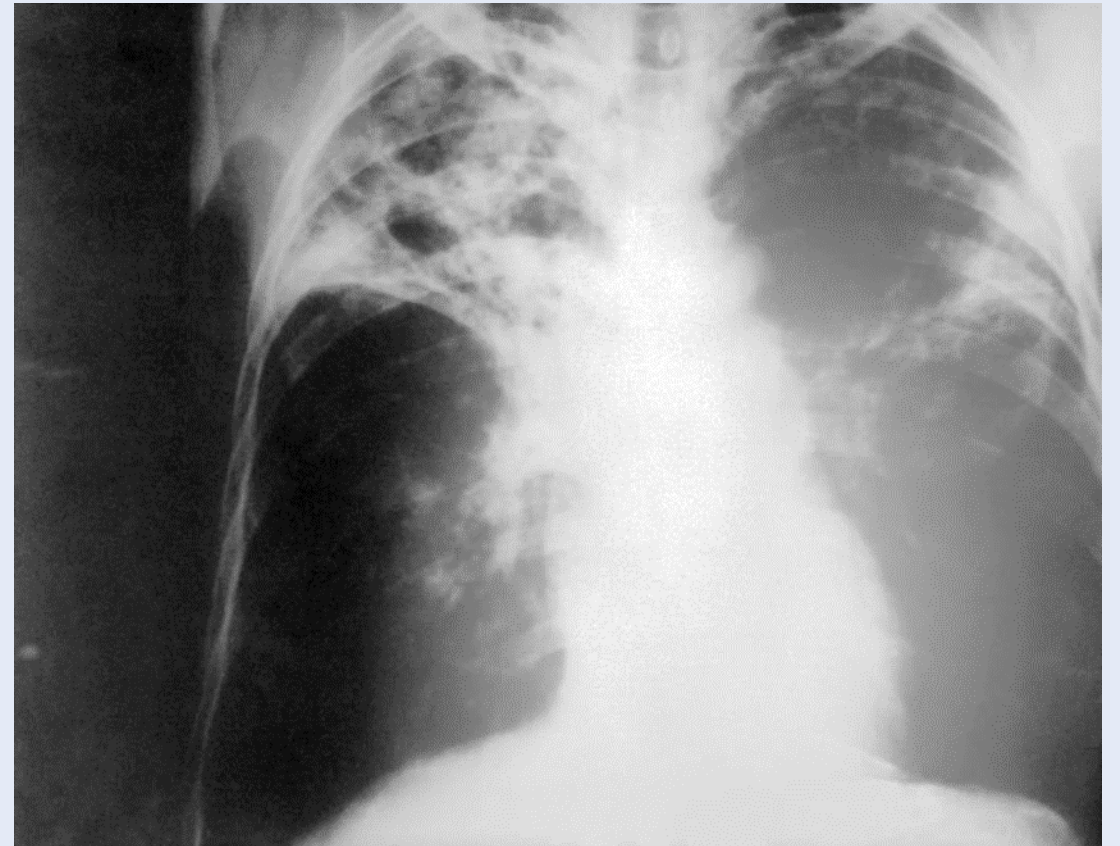
## Nashville/Davidson County

	CY2020		CY2021		YTD2021		YTD2022	
	Total = 29		Total = 20		Total = 8		Total = 17	
	Cases	% Total	Cases	% Total	Cases	% Total	Cases	% Total

We are finding that during the COVID-19 pandemic, there has been delay in testing for TB and diagnosis of TB in the community.

# Current TB disease Cases

- Treatment course complicated by:
  - Chronic health conditions
  - Mental ill
  - Alcohol and/or substance abuse
  - Homelessness/unstable housing
  - Transportation
  - Food insecurity
  - Demanding work schedules
  - No health insurance or primary care provider
  - TB drug resistance



# Strengths

- Field Team
  - Communicable Disease Investigators
  - Outreach workers
- Medical Team
  - Physician, 3 Nurse Practitioners, Nurses
- TBI Referral Process
- Refugee Coordinator
- The ability to perform and review chest x-rays on site
- Sputum induction room in clinic
- Flexibility within the program
- Help TN Dept of Health train providers
- Help train ID fellows and medical residents

# Challenges

- Complexity of TB Infection and TB disease cases
- Shortage of Nurses
- Increased workload while working short-staffed
- Multiple public health clinics within the TB clinic:
  - Hep C patients
  - Monkeypox patients:
    - Testing
    - Treatment
    - Follow-up



# Opportunities and Plans

- Partnership with Tyson Foods
  - Tyson Foods has a very diverse workforce with many cultures in which TB is an endemic
- Partnership with a local Federally Qualified Health Center (FQHC) in effort of eliminating TB in the community.
  - The safety net clinics are needed to assist and provide the additional coordinated care for the patients with TB such as diabetes, heart disease, high blood pressure, etc.

# Thank you!

- Questions?

# Statistics 2021

Location	Cases	Rates (per 100,000 persons)
United States	7,860	2.4
Tennessee	84	1.2
Nashville-Davidson Co.	20	2.9

