

# **Director's Update to the Board of Health**

## **January, 2023**

### **Protecting Health – Preventing the Spread of Infectious Disease**

#### **Ryan White**

The Ryan White Part A (RWPA) Nashville program director and staff, in conjunction with the state health department, United Way, the Memphis Ryan White Part A program and others, recently completed a federally required integrated plan to address the multiple epidemics that often overlap among the HIV population. The final product was submitted to HRSA and CDC at calendar year's end; the public comment period remains open. The integrated plan covers what is called a syndemic (the co-occurrence of more than one epidemic), in this case HIV, substance use disorders, sexually transmitted infections, and viral hepatitis. Taking all these issues into account is felt to be integral to Ending the Epidemic of HIV.

RWPA Nashville's role included hosting focus groups from priority populations of persons living with HIV; Black men ages 18 to 35 who have sex with men; a women's group; and a general group representing persons living with HIV of varying ages, races, and gender identity. We also conducted mixed Nashville TGA (Transitional Grant Area) groups in both Davidson and Rutherford Counties. We assembled a focus group unique to Hispanic HIV patients. The RWPA program has worked for 10 months to ensure the integrated plan is representative of the Nashville TGA, specifically reflecting equity, diversity, and inclusion.

#### **Ryan White II**

HRSA is in the process of issuing award notices for the FY23 Part A grants. Since HRSA is operating under a continuing resolution rather than a budget at this point the awards will provide partial funding. Final awards will be processed after the full FY23 appropriation amount is known. We do not expect any disruptions of service because of this.

### **Improving Health - Services to Individuals & Families**

#### **Air Pollution Permit**

The Air Pollution Control Division posted a Public Notice regarding a construction permit application from Jones Brothers Contractors for a proposed hot-mix asphalt plant on Burnett Road in Old Hickory. The 30-day public comment period originally ended on January 2, 2023.

Council Member Larry Hagar, in whose district the plant is located, brought up concerns based on whether the zoning classification of the property allows for an asphalt plant. Air Pollution Control Director John Finke responded that Air Pollution must evaluate any application based on the proposed operation, and consider only whether that operation can comply with air pollution regulations. If the application indicates that it can, then it is the duty of the Air Pollution Control Division to issue a permit, independently of whether the property is zoned for such a business.

There is history in this fact. After a community uproar several years ago over two natural gas compressor stations, the Metro Council passed an ordinance intended to prevent Air Pollution from issuing permits to facilities that weren't properly zoned. In response the state Legislature passed a law prohibiting local air pollution agencies from considering that very thing (TCA 68-201-115). CM Hagar's argument that the proposed use is not permitted on the property under current zoning restrictions may be valid, but the Air Pollution Control Division legally cannot make that determination.

CM Hagar encouraged his constituents to send comments to the Air Pollution Control Division, and they did. We had received more than 600 comments by the January 2 deadline. Many of the comments

indicated a misunderstanding that there would be some sort of referendum or public hearing regarding the construction of the plant. Given the volume of comments, and in recognition that the comment period spanned both the Christmas holiday and some very nasty weather, Mr. Finke has decided to extend the comment period by two weeks. It is his intent to use the extended period to further inform the affected constituents of MPHD's legal obligations in the permitting process, and of the existence and availability of the application to which comments are supposed to be directed.

### **Diamond Update**

Diamond, the dog that was intentionally set on fire, continues to make amazing progress. She is healthy, happy, and energetic. MACC Kennel Director Dannielle Orlando is fostering her and providing continued care and treatment. Diamond, who now goes by Primrose, and Dannielle recently were featured on WKRN's "Local on 2" program (<https://www.wkrn.com/video/road-to-recovery-helping-primrose-the-dogs-health-journey/8267488/>). Primrose is still facing a couple of surgeries, including reconstruction of both her eyelids.

### **Dental**

Last month we completed the school-based dental sealant program at McMurray Middle School, where a total of 1,426 sealants were placed. In your packet we have included the [flyer we provide the school](#) after completing a program.

In addition, the Lentz Dental Clinic in December performed more than 670 procedures (including at least 18 extractions, 10 crowns with 4 pulpotomies/root canals, 45 fillings, and 15 emergency visits).

## **Creating Healthier Community Environments**

### **Opioids**

You have in your packet a renewal of the [monthly opioid report](#). Also, last week we convened the inaugural meeting of the Opioid Settlement Steering Committee at the request of the Mayor's office. MPHD is represented along with other Metro departments and community partners, with a charge of deciding how best to go about allocating money coming to Metro from the settlement of various lawsuits against pharmaceutical companies and others involved who have been found culpable in court for the opioid epidemic. To date Metro has received \$1,737,809.13 in such payments.

## **Organizational Updates**

### **Comms Team**

The Communications team soon will be back to full strength. An offer has been made to and accepted by Christian Sinclair to serve as the next Marketing Coordinator. He comes to MPHD from the Frist Art Museum, bringing media creation experience, strategic communication skills and experience in the introduction of DEI initiatives to internal stakeholders. The position had been filled since 2020 by Matt Peters, who is looking forward to both cutting back to one job (he is of course also the Public Information Officer) and working with Christian to support new marketing campaigns surrounding public health in our community. We welcome Christian to the team.

### **Meeting at Woodbine**

The Board had requested that it meet soon at the Woodbine clinic. We're looking for a suitable space and working on arrangements to make that happen sometime this spring if possible.

## **Addition to Director’s Update January 2023: Clinical Services**

### **Continuation of services**

Preventive health (East, Lentz 120, Woodbine) will offer COVID vaccine boosters starting January 3, 2023, to prevent any lapse in vaccination offerings after STRIKE team closes down operation. Vaccines will be provided on an appointment basis.

The Sexual Health Center (at Lentz) will offer MPOX vaccine boosters starting January 3, 2023, to prevent any lapse in vaccination offerings after STRIKE team closes down operation. Vaccines will be provided on an appointment basis.

### **Collaboration with DCSO**

Starting January 25, 2023, MPHD is partnering with A Step Ahead (current contracted partner) and the Davidson County Sheriff’s Office to provide family planning services to current incarcerated individuals. Efforts will be led by a nurse practitioner and the family planning administrator to offer a wide variety of options to this population. We look forward to this opportunity and expanding family planning services to others in the community.

### **Colposcopy option at MPHD**

Since partnering with Vanderbilt University’s Women’s Global Health as of August 2021, MPHD has been able to perform 58 colposcopies in-house without needing to refer to outside resources. As a program priority for 2022, each of the nurse practitioners is being trained to perform colposcopies through the ASCCP course. Starting in January 2023, our first nurse practitioner to complete the online didactic and in-person skills training, Eterial Rucker, will be able to start seeing patients on her own. These services are covered for eligible individuals through the TN Breast and Cervical Screening program and internal referral allows the patient to maintain continuity of care.

### **January is Cervical Cancer Awareness Month**

Each of the preventive health sites will participate in Cervical Cancer Awareness month by hosting a “Free Pap” day for individuals that are not covered by family planning funding but can be covered under Breast and Cervical Screening funding. Dates are listed below:

- East ..... January 17, 2023
- Lentz ..... January 24, 2023
- Woodbine ..... January 31, 2023

A look ahead: MPHD along with MNPS will host the K-Readiness Fair on April 22, 2023, at Lentz Public Health Department. Planning is currently underway!

Dental Sealant Program Report for:



*Metro Public Health Dept*  
Nashville/Davidson County  
Protecting, Improving, and Sustaining Health

# McMurray Middle School

December 2022

## The Number of:

- Students Receiving Screening | **155**
- Students Receiving Fluoride Varnish | **154**
- Students Receiving Sealants | **151**
- Students Receiving SDF | **18**
- Teeth treated with SDF | **57**
- Students Referred for Treatment | **44**
- Students with Urgent Needs | **15**
- Students Participation | **24%**

*Please see accompanying list in this email*

It is always truly a pleasure to work with your school family. We appreciate you making us welcome and being such steadfast partners with our program. Looking forward to partnering with you again. Thank you!

**1426**

**Total Sealants  
Placed**

VALUE OF  
SERVICES

**\$116,000!!**

### **Fun Fact:**

Sealants at school are FREE! A filling on the same surface as a sealant can cost on AVERAGE anywhere from \$65-100 depending on the material and where you go in Tennessee!

# Overdose Response Epidemiology and Surveillance Update

Davidson County, TN | Update: 1/03/2023

## Average Number of Weekly Incidents

### Suspected Fatal Drug Overdoses

2021 yearly average: 13.7 deaths per week  
 2022 yearly average: 14.3 deaths per week

### Suspected Nonfatal Drug Overdose Emergency Department (ED) Visits

2021 yearly average: 44.4 incidents per week  
 2022 yearly average: 45.2 incidents per week

### Suspected Drug Overdoses Requiring NFD-EMS Response

2021 yearly average: 108.4 incidents per week  
 2022 yearly average: 108.3 incidents per week

## Cumulative Number of Incidents: Weeks 1-52 | January 1-December 24

### Suspected Fatal Drug Overdoses

2021: 719  
 2022: 741 (607 completed and 134 pending cases, 3.1%)

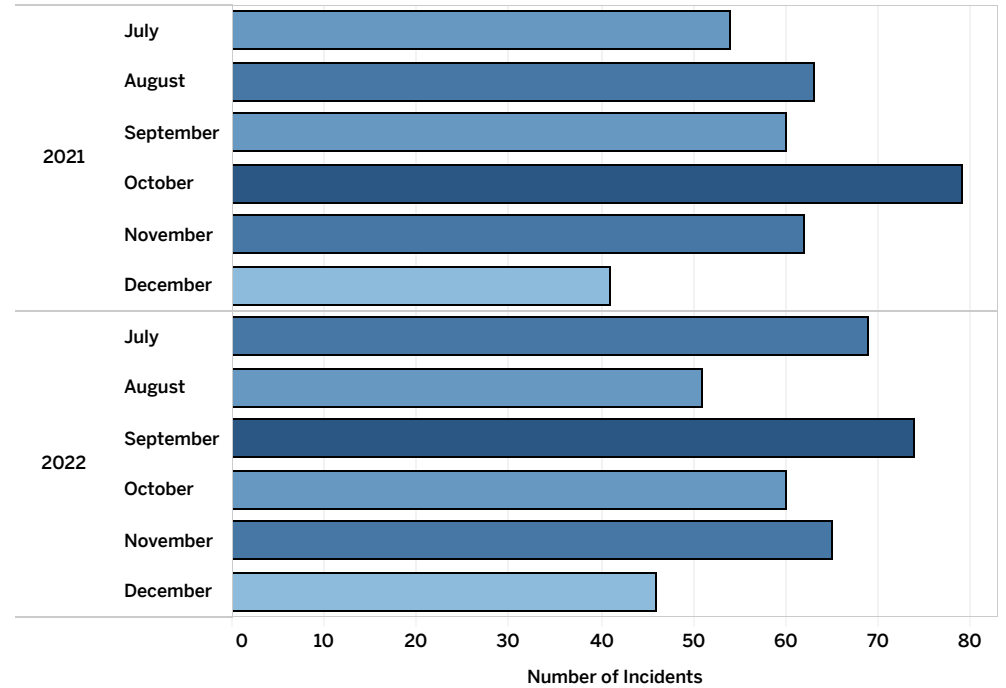
### Suspected Nonfatal Drug Overdose Emergency Department (ED) Visits

2021: 2,323  
 2022: 2,348 (1.1%)

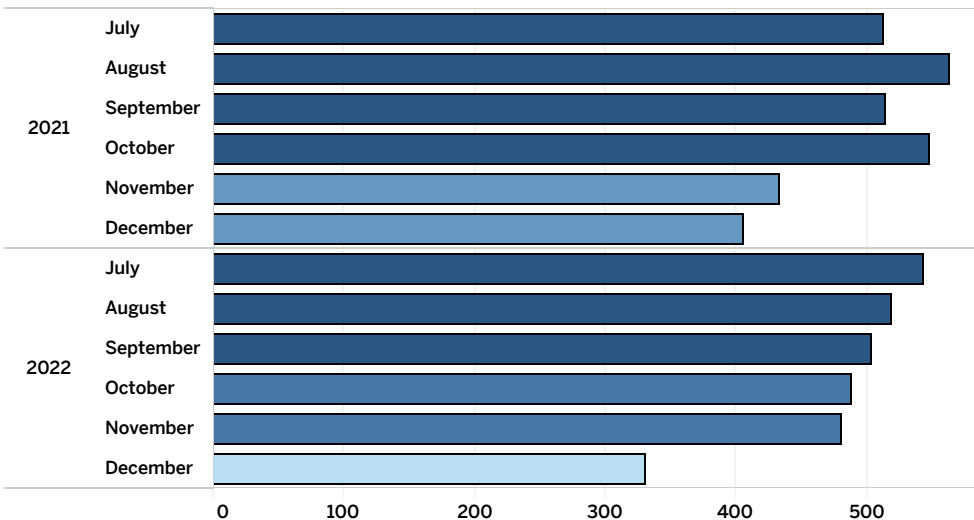
### Suspected Drug Overdoses Requiring NFD-EMS Response

2021: 5,662  
 2022: 5,630 (-0.6%)

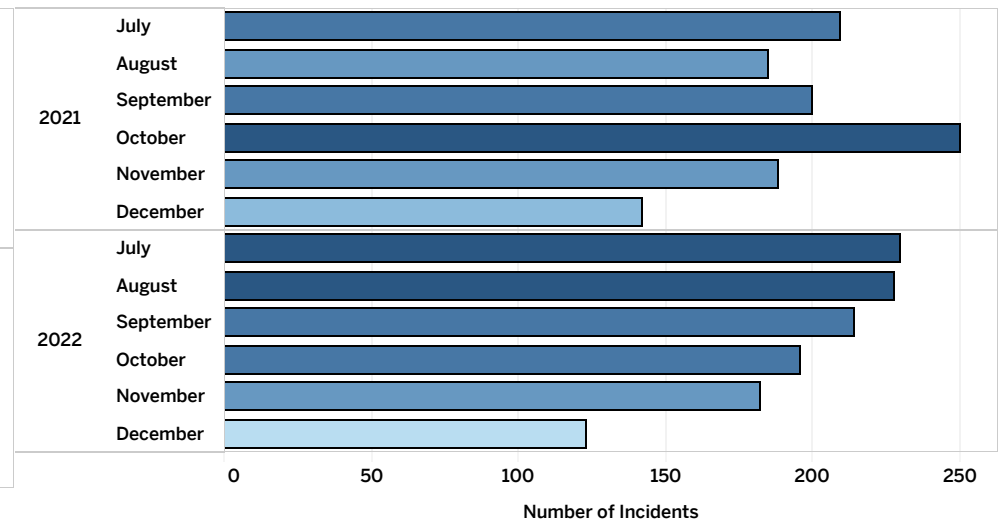
## Suspected Fatal Drug Overdoses, 2021-2022



## Suspected Drug Overdoses Requiring NFD-EMS Response, 2021-2022



## Suspected Nonfatal Drug Overdose-related ED Visits, 2021-2022

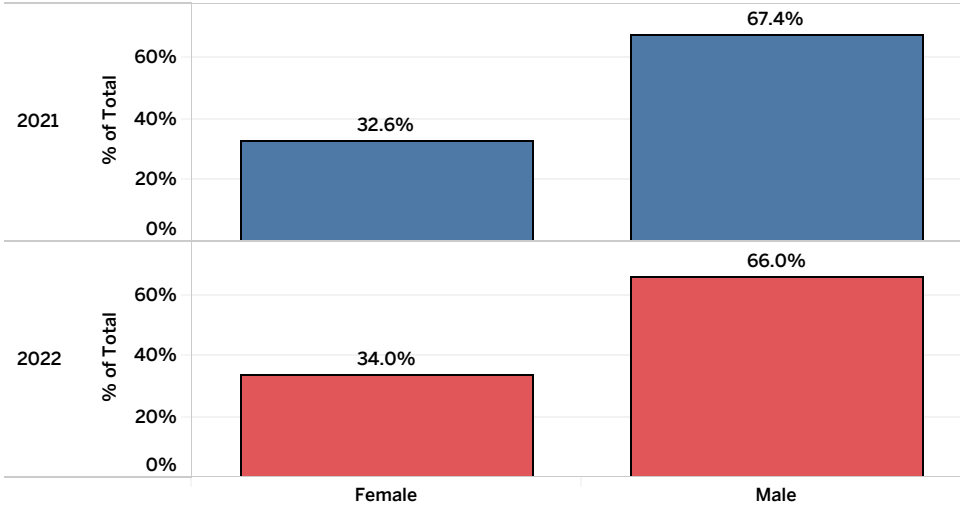


# Overdose Response Epidemiology and Surveillance Update

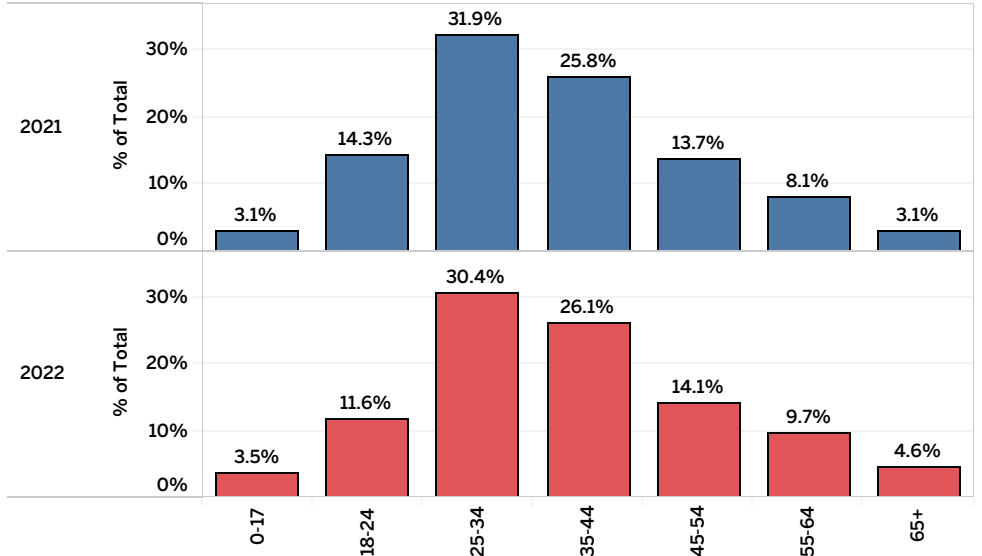
Davidson County, TN | Update: 1/03/2023

## Suspected Drug Overdoses Requiring NFD-EMS Response

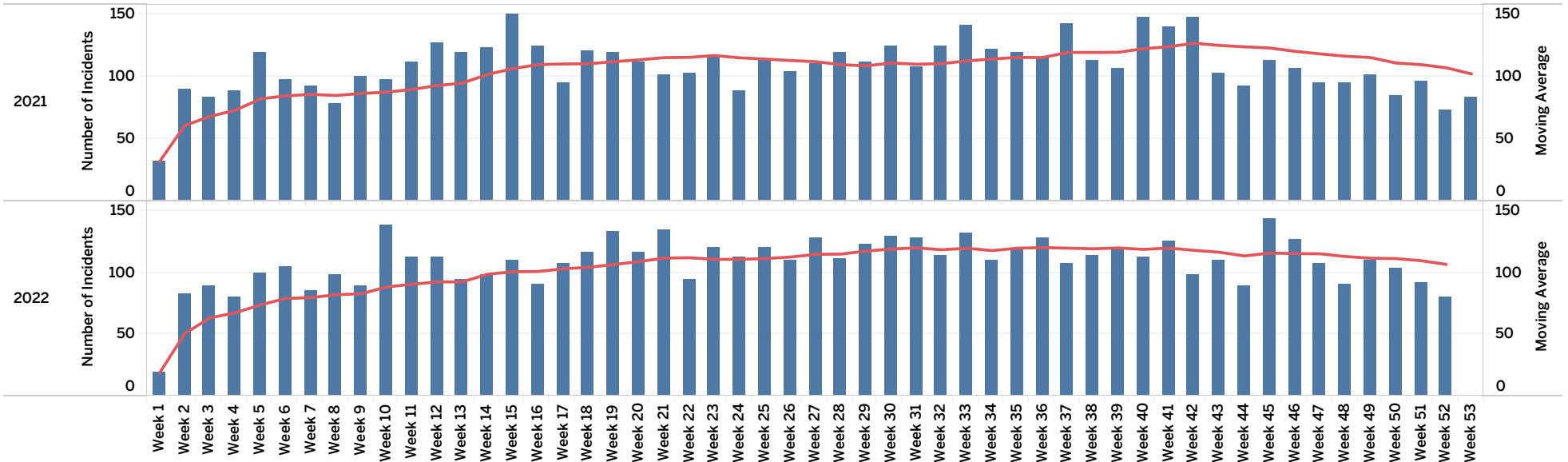
Sex



Age Group



## Suspected Drug Overdoses by Week of Incident with 90-Day Moving Average

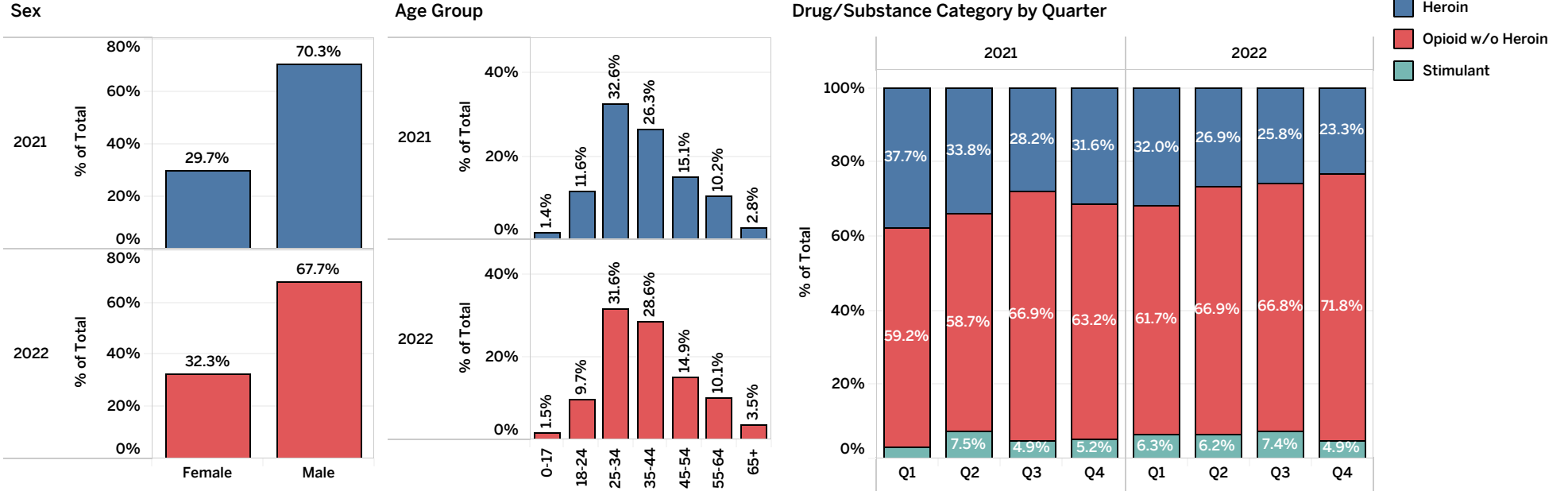


\*\*\*ALL DATA ARE PROVISIONAL, SUBJECT TO CHANGE, AND NOT FOR PUBLIC/MEDIA DISTRIBUTION\*\*\*  
 Prepared by the Overdose Response Program - Metro Public Health Department of Nashville/Davidson County

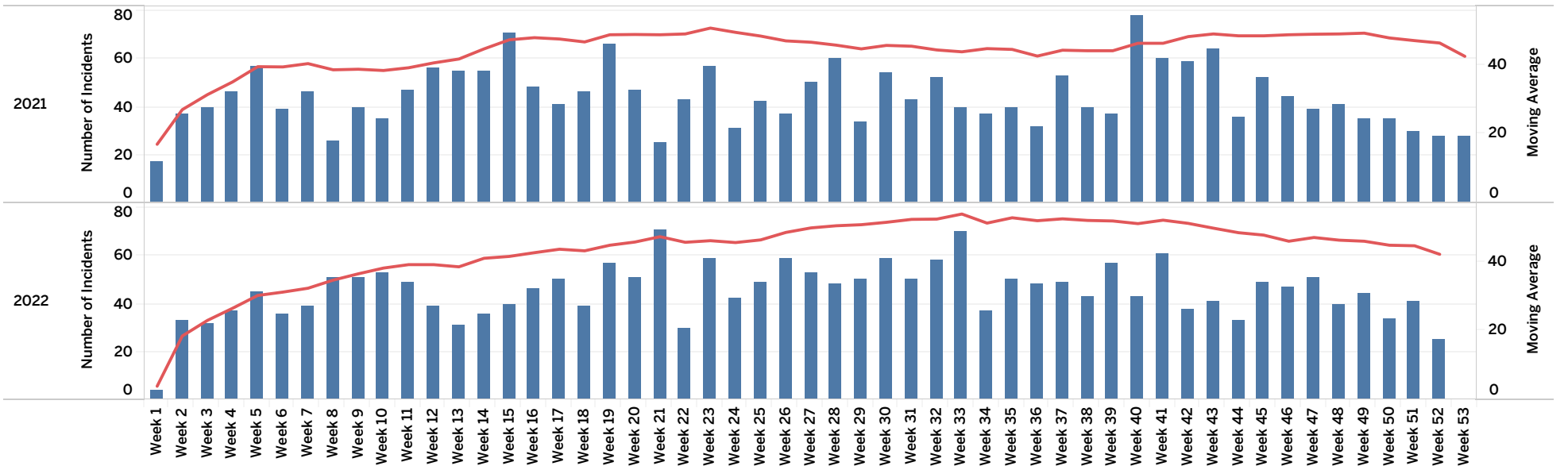
# Overdose Response Epidemiology and Surveillance Update

Davidson County, TN | Update: 1/03/2023

## Suspected Nonfatal Drug Overdose ED Visits



## Nonfatal Drug Overdose ED Visits by Week of Incident with 90-Day Moving Average



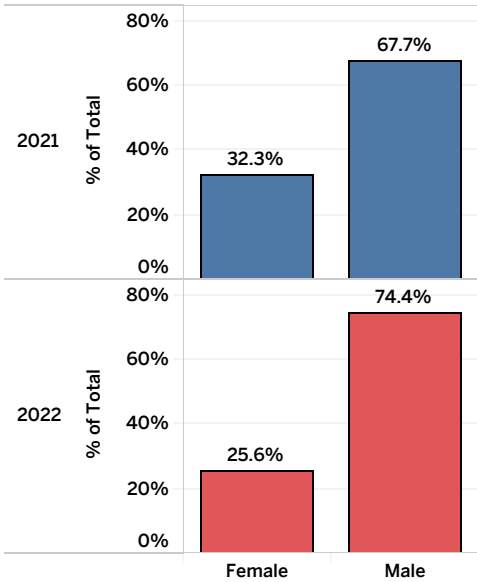
\*\*\*ALL DATA ARE PROVISIONAL, SUBJECT TO CHANGE, AND NOT FOR PUBLIC/MEDIA DISTRIBUTION\*\*\*  
 Prepared by the Overdose Response Program - Metro Public Health Department of Nashville/Davidson County

# Overdose Response Epidemiology and Surveillance Update

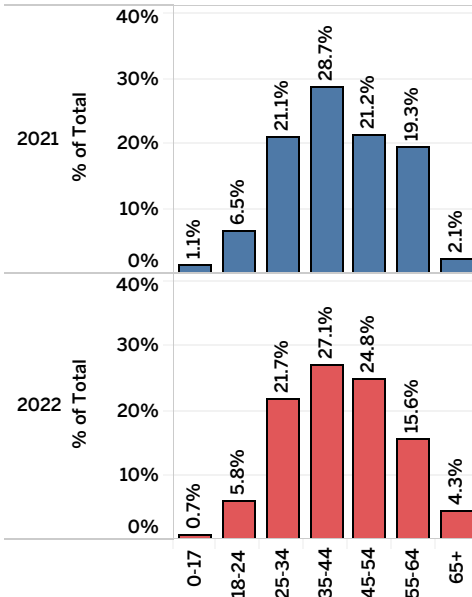
Davidson County, TN | Update: 1/03/2023

## Suspected Fatal Drug Overdoses

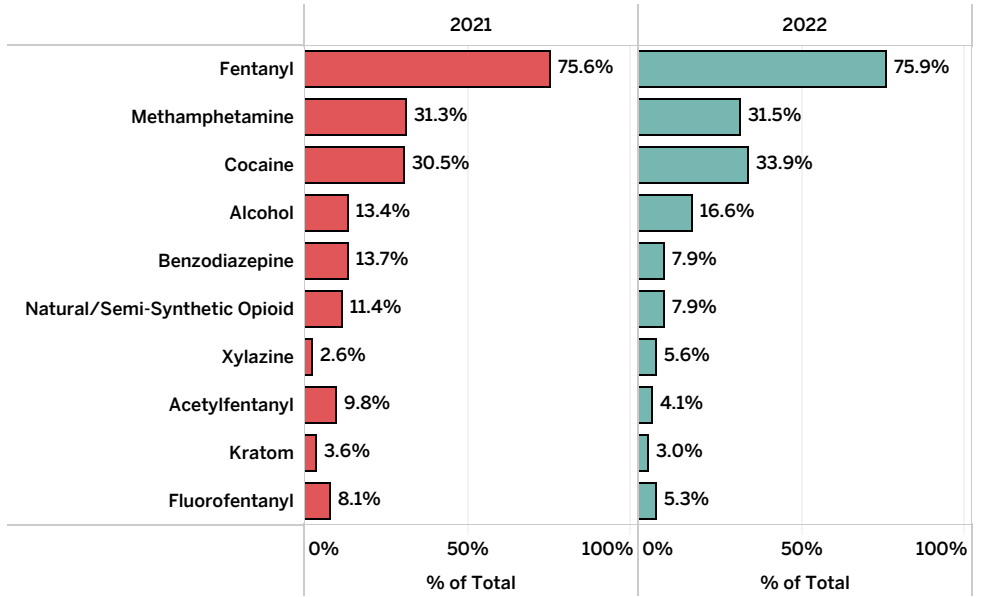
Sex



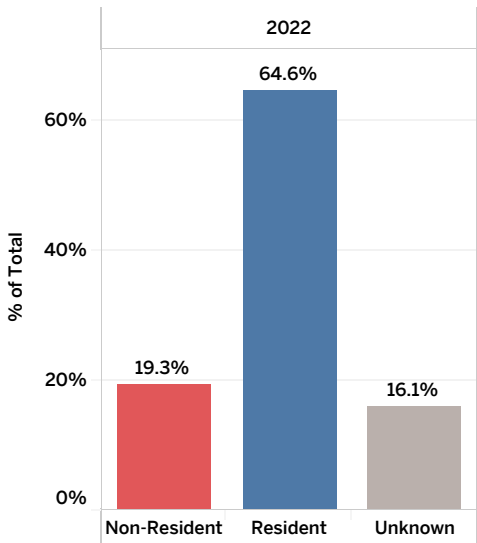
Age Group



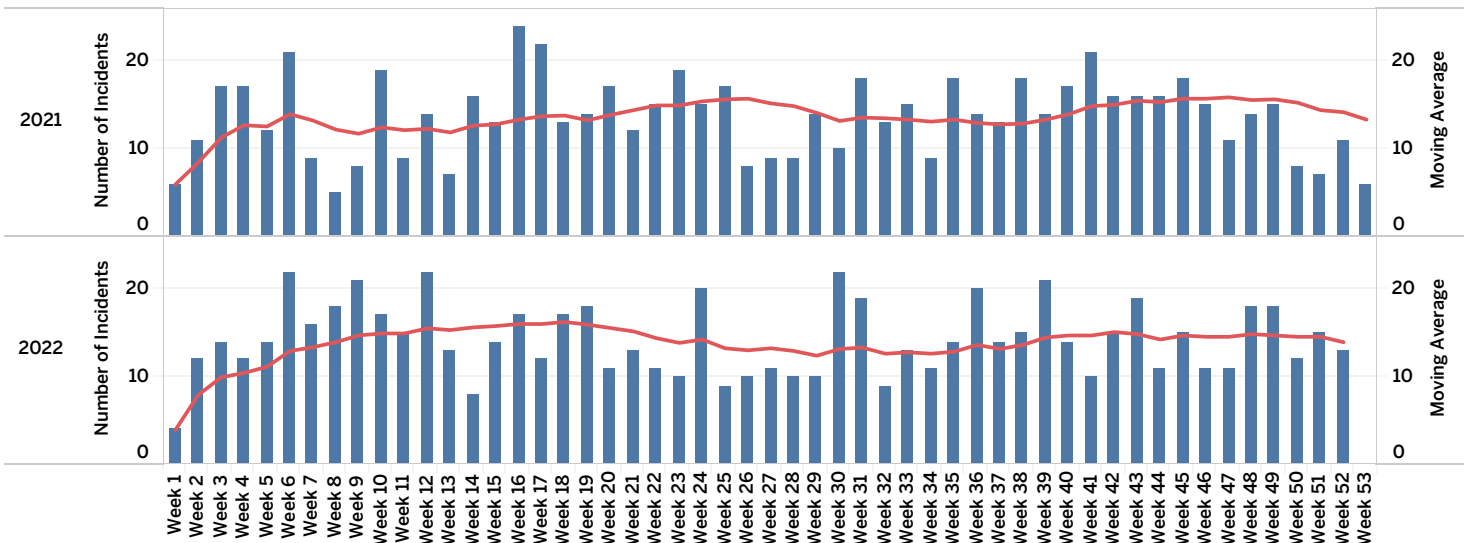
Substances Detected among Suspected Overdose Deaths



Decedent Residency Status



Suspected Fatal Drug Overdoses by Week of Incident with 90-Day Moving Average



\*\*\*ALL DATA ARE PROVISIONAL, SUBJECT TO CHANGE, AND NOT FOR PUBLIC/MEDIA DISTRIBUTION\*\*\*  
 Prepared by the Overdose Response Program - Metro Public Health Department of Nashville/Davidson County



# Overdose Response Epidemiology and Surveillance Update

Davidson County, TN | Update: 1/03/2023

If you have any questions, please contact:

## **Michelle Wemette, DVM, MPH | Epidemiologist**

Division of Epidemiology

Metro Public Health Department of Nashville/Davidson County

Email: michelle.wemette@nashville.gov

Phone: 615-340-8614

## **MPHD Website – Drug Overdose Information**

<https://www.nashville.gov/departments/health/drug-overdose-information>

## **Data Sources**

### **Suspected Fatal Drug Overdoses**

Death Investigation and Decedent Information (DIDI) Database (maintained by the Middle TN Regional Forensic Center)

### **Nonfatal Drug Overdose ED Visits**

ESSENCE-TN (maintained by the TN Department of Health)

### **Suspected Drug Overdoses**

Nashville Fire Department Emergency Medical Services (NFD-EMS) Database

## **Notes**

Data presented in this report were extracted on December 28, 2022 and are provisional. There may be additional fatal/nonfatal drug overdoses reported over this time period in subsequent reports as incidents that occurred during recent months are not yet finalized. Drug overdose death data were accessed from the DIDI database by the Overdose Response Program and represent deaths suspected to be drug overdose-related. Further, these deaths have occurred with Davidson County; cases are included in this total regardless of resident status.

**\*\*If you have information on unusual overdose activity, please contact the Overdose Response Program\*\***

**Opioid.Response@nashville.gov | 615-340-8620**

**NATIONAL FEDERATION OF HUMANE SOCIETIES**  
**BASIC ANIMAL STATS MATRIX**  
**(vrs 9-2012)**

**IMPORTANT NOTES FOR THE BASIC DATA MATRIX**

**Introduction to the Basic Matrix:**

This basic matrix was designed to serve as a tool for basic data collection. It is a simple matrix containing what many (including Asilomar, ASPCA, National Federation, American Humane, UC Davis, Maddies Fund, PetSmart Charities and HSUS) have agreed are the minimum data points (along with definitions) an organization should gather. Whether organizations already gather a great deal of data or have only gathered the basics, this matrix should facilitate the roll up or merging of data at the local, regional or national level by providing a common framework. This matrix does not reflect any preference in data analysis or the calculation of rates but is rather simply a tool for data collection.

**Tracking by Species and Age:**

The risks associated with being an adult dog, puppy, adult cat or kitten (or neonate of any kind) in a shelter environment will vary a great deal. To help shelters assess and understand the differing risks for these populations of animals, this basic animal stats matrix includes a break out by species and age. If tracking statistics broken out by species and age is beyond the capacity of an agency, simply tracking statistics by species would be a place to begin. This document defines puppy and kitten as under 5 months of age (see below: Determining Age). Again – given the differing level of risk – breaking age down further to include a neonate category for both dogs and cats can also be very informative.

**Determining Age:**

This basic matrix utilizes 5 months as the break point between puppy/kitten and adult. At or near 5 months of age there are changes in the teeth which can help guide trained staff regarding proper categorization of the animal. For cats, at 4-5 months of age permanent canines, premolars and molars are coming in (all in by 6 months of age). For dogs, at 5-7 months of age permanent canines, premolars and molars are coming in (all in by 7 months of age). Source: "How to . . . series" from Animal Sheltering, [http://www.animalsheltering.org/resources/magazine/may\\_jun\\_1996/how-to-determine-a-dog-or.pdf](http://www.animalsheltering.org/resources/magazine/may_jun_1996/how-to-determine-a-dog-or.pdf) or contact the National Federation of Humane Societies for a copy of the document.

**Beginning and Ending Shelter Counts:**

These numbers help frame the population of the animals sheltered and cared for by the organization. We are recommending that a shelter do a walk through – physically counting the animals sheltered within the organization, and not forgetting to count those animals who have been admitted but who are not currently within the shelter (foster care, in the care of a veterinary hospital, etc).

**Defining Owner Requested Euthanasia:**

Some shelters offer pet euthanasia to the public as a service whose cost may be subsidized and therefore more affordable than local veterinary clinics, thus ensuring access to this service. Defining when euthanasia should be recorded as "at the request of the owner", or not, is the subject of much discussion.

For the purposes of this document, we are choosing to define owner INTENDED euthanasia as the euthanasia of a pet whose owner brought the pet to the shelter for that service. In other words, the owner brought the pet in specifically for that service – it was their intent before arriving.

Any other definition of "owner requested" euthanasia leaves much up to interpretation and therefore a great deal of variation among organizations and their reporting. We believe the simplicity of this definition helps to ensure consistent application and record keeping.

**Live Admissions Only**

For the purposes of this matrix we are tracking LIVE admissions only, i.e. animals who are alive when they come into an agency's possession. Animals who are dead when taken in to an agency's possession may be a data point to track, but that information is not tracked by this matrix.

**What is Possession?**

"Adoption" and "Transferred to another Agency" both make reference to possession. The primary concept here is one of ownership. For example, in foster care, the agency still has possession or ownership. If adopted or transferred to another Agency, possession is now with the new owner, or with another Agency.

**Where are the "Others"?**

This basic data matrix focuses on canines and felines. Many organizations also provide extraordinary services for other pets (pocket pets, rabbits, ferrets) and animals (wildlife), and that good work is not captured here.

**Why a Basic Matrix?**

This basic matrix was designed to serve as a tool for data collection. It is a simple matrix containing what many have agreed are the minimum data points an organization should consider gathering. By agreeing to this basic matrix - we hope organizations will gather AT LEAST this data, or if an organization all ready gathers a great deal of data, that they will consider rolling up their data into this format to help facilitate (if individual agencies are interested) data collection at a local, regional or national level, which would allow participating agencies to benchmark their work against similar agencies around their region or the nation. This matrix does not reflect any preference for the variety of live release rates used in animal sheltering and welfare. Most rates, other than full Asilomar which requires a conditions matrix, should be able to be calculated from the data points included.



**METRO NASHVILLE**  
ANIMAL CARE & CONTROL

# NFHS Basic Data Matrix

12/01/2022 and 12/31/2022

		Species							Totals	
		Canine			Canine Totals	Feline				Feline Totals
		Adult	Up to 5 Months	Unknown Age		Adult	Up to 5 Months	Unknown Age		
Beginning Animal Count as of 12/01/2022		155	6	1	162	19	41	0	60	222
I N T A K E S	Stray/At Large	204	36	8	248	19	7	0	26	274
	Transferred in from Municipal Shelter	0	0	0	0	0	0	0	0	0
	Transferred in from Other Rescue Group	0	0	0	0	0	0	0	0	0
	Owner Requested Euthanasia	4	0	0	4	0	0	0	0	4
	Relinquished by Owner	20	4	1	25	26	6	0	32	57
	Other Intakes	9	0	0	9	2	0	0	2	11
	<b>Total Intakes</b>	<b>237</b>	<b>40</b>	<b>9</b>	<b>286</b>	<b>47</b>	<b>13</b>	<b>0</b>	<b>60</b>	<b>346</b>
O U T C O M E S	Adoptions	85	14	0	99	39	29	0	68	167
	Returned to Home	57	0	3	60	5	0	0	5	65
	Transferred to Rescue Group	49	26	0	75	4	2	0	6	81
	Other Live Outcomes	0	0	0	0	0	0	0	0	0
	Return to Field	0	0	0	0	0	0	0	0	0
	<b>Total Live Outcomes</b>	<b>191</b>	<b>40</b>	<b>3</b>	<b>234</b>	<b>48</b>	<b>31</b>	<b>0</b>	<b>79</b>	<b>313</b>
	Died in Care	0	1	0	1	2	0	0	2	3
	Lost in Care	2	0	0	2	0	0	0	0	2
	Euthanasia	41	1	6	48	2	1	0	3	51
	Owner Requested Euthanasia	4	0	0	4	0	0	0	0	4
<b>Total Other Outcomes</b>	<b>47</b>	<b>2</b>	<b>6</b>	<b>55</b>	<b>4</b>	<b>1</b>	<b>0</b>	<b>5</b>	<b>60</b>	
<b>Total Outcomes</b>	<b>238</b>	<b>42</b>	<b>9</b>	<b>289</b>	<b>52</b>	<b>32</b>	<b>0</b>	<b>84</b>	<b>373</b>	
Ending Animal Count as of 12/31/2022		155	3	1	159	23	13	0	36	195
Save Rate		81.55%	95.00%	33.33%	81.91%	91.49%	92.31%	0.00%	91.67%	83.63%



**METRO NASHVILLE**  
ANIMAL CARE & CONTROL

# HS Basic Data Matrix Deceased Animal Intake Only

12/01/2022 and 12/31/2022

		Species							Totals	
		Canine			Canine Totals	Feline				Feline Totals
		Adult	Up to 5 Months	Unknown Age		Adult	Up to 5 Months	Unknown Age		
Beginning Animal Count as of 12/01/2022		0	0	0	0	0	0	0	0	0
<b>I N T A K E S</b>	Stray/At Large	1	0	0	1	0	0	1	1	2
	Transferred in from Municipal Shelter	0	0	0	0	0	0	0	0	0
	Transferred in from Other Rescue Group	0	0	0	0	0	0	0	0	0
	Owner Requested Euthanasia	0	0	0	0	0	0	0	0	0
	Relinquished by Owner	0	0	0	0	0	0	0	0	0
	Other Intakes	0	0	0	0	0	0	0	0	0
<b>Total Intakes</b>		<b>1</b>	<b>0</b>	<b>0</b>	<b>1</b>	<b>0</b>	<b>0</b>	<b>1</b>	<b>1</b>	<b>2</b>



**METRO NASHVILLE**  
ANIMAL CARE & CONTROL

# NFHS Basic Data Matrix

01/01/2022 and 12/31/2022

		Species							Totals	
		Canine			Canine Totals	Feline				Feline Totals
		Adult	Up to 5 Months	Unknown Age		Adult	Up to 5 Months	Unknown Age		
Beginning Animal Count as of 01/01/2022		90	3	0	93	15	8	0	23	116
I N T A K E S	Stray/At Large	2336	347	50	2733	401	597	12	1010	3743
	Transferred in from Municipal Shelter	0	0	0	0	0	0	0	0	0
	Transferred in from Other Rescue Group	0	0	0	0	4	0	0	4	4
	Owner Requested Euthanasia	49	0	1	50	6	0	0	6	56
	Relinquished by Owner	280	32	2	314	161	59	2	222	536
	Other Intakes	141	16	3	160	83	14	1	98	258
	<b>Total Intakes</b>	<b>2806</b>	<b>395</b>	<b>56</b>	<b>3257</b>	<b>655</b>	<b>670</b>	<b>15</b>	<b>1340</b>	<b>4597</b>
O U T C O M E S	Adoptions	844	129	0	973	329	364	0	693	1666
	Returned to Home	872	30	25	927	51	2	0	53	980
	Transferred to Rescue Group	640	200	2	842	198	233	5	436	1278
	Other Live Outcomes	1	0	1	2	0	0	0	0	2
	Return to Field	0	0	0	0	3	0	0	3	3
	<b>Total Live Outcomes</b>	<b>2357</b>	<b>359</b>	<b>28</b>	<b>2744</b>	<b>581</b>	<b>599</b>	<b>5</b>	<b>1182</b>	<b>3929</b>
	Died in Care	5	3	0	8	10	9	1	20	28
	Lost in Care	14	1	0	15	6	2	1	9	24
	Euthanasia	347	4	26	377	67	33	8	108	485
	Owner Requested Euthanasia	46	0	1	47	5	0	0	5	52
<b>Total Other Outcomes</b>	<b>412</b>	<b>8</b>	<b>27</b>	<b>447</b>	<b>88</b>	<b>44</b>	<b>10</b>	<b>142</b>	<b>589</b>	
<b>Total Outcomes</b>	<b>2769</b>	<b>367</b>	<b>55</b>	<b>3191</b>	<b>669</b>	<b>643</b>	<b>15</b>	<b>1327</b>	<b>4518</b>	
Ending Animal Count as of 12/31/2022		155	3	1	159	23	13	0	36	195
Save Rate		86.74%	97.97%	52.73%	87.54%	87.23%	93.43%	33.33%	89.74%	88.18%



**METRONASHVILLE**  
ANIMAL CARE & CONTROL

# HS Basic Data Matrix Deceased Animal Intake Only

01/01/2022 and 12/31/2022

		Species							Totals	
		Canine			Canine Totals	Feline				Feline Totals
		Adult	Up to 5 Months	Unknown Age		Adult	Up to 5 Months	Unknown Age		
Beginning Animal Count as of 01/01/2022		0	0	0	0	0	0	0	0	0
<b>I N T A K E S</b>	Stray/At Large	6	0	0	6	1	0	1	2	8
	Transferred in from Municipal Shelter	0	0	0	0	0	0	0	0	0
	Transferred in from Other Rescue Group	0	0	0	0	0	0	0	0	0
	Owner Requested Euthanasia	0	0	0	0	0	0	0	0	0
	Relinquished by Owner	0	1	0	1	0	0	0	0	1
	Other Intakes	2	0	0	2	0	0	0	0	2
<b>Total Intakes</b>		<b>8</b>	<b>1</b>	<b>0</b>	<b>9</b>	<b>1</b>	<b>0</b>	<b>1</b>	<b>2</b>	<b>11</b>