



METROPOLITAN GOVERNMENT OF NASHVILLE AND DAVIDSON COUNTY

**JOHN COOPER
MAYOR**

**NASHVILLE DEPARTMENT OF TRANSPORTATION
AND MULTIMODAL INFRASTRUCTURE**

MEMORANDUM

TO: Metropolitan Traffic and Parking Commission

FROM: Jason Oldham, Assistant Chief of Engineering,
Nashville Department of Transportation

DATE: April 3, 2023

SUBJECT: April 10, 2023, Traffic and Parking Commission Agenda Analysis

PURPOSE:

Provide an overview of all items on the upcoming Metropolitan Traffic and Parking Commission agenda to ensure that commission members have the information necessary for discussion and action prior to the commission meeting.

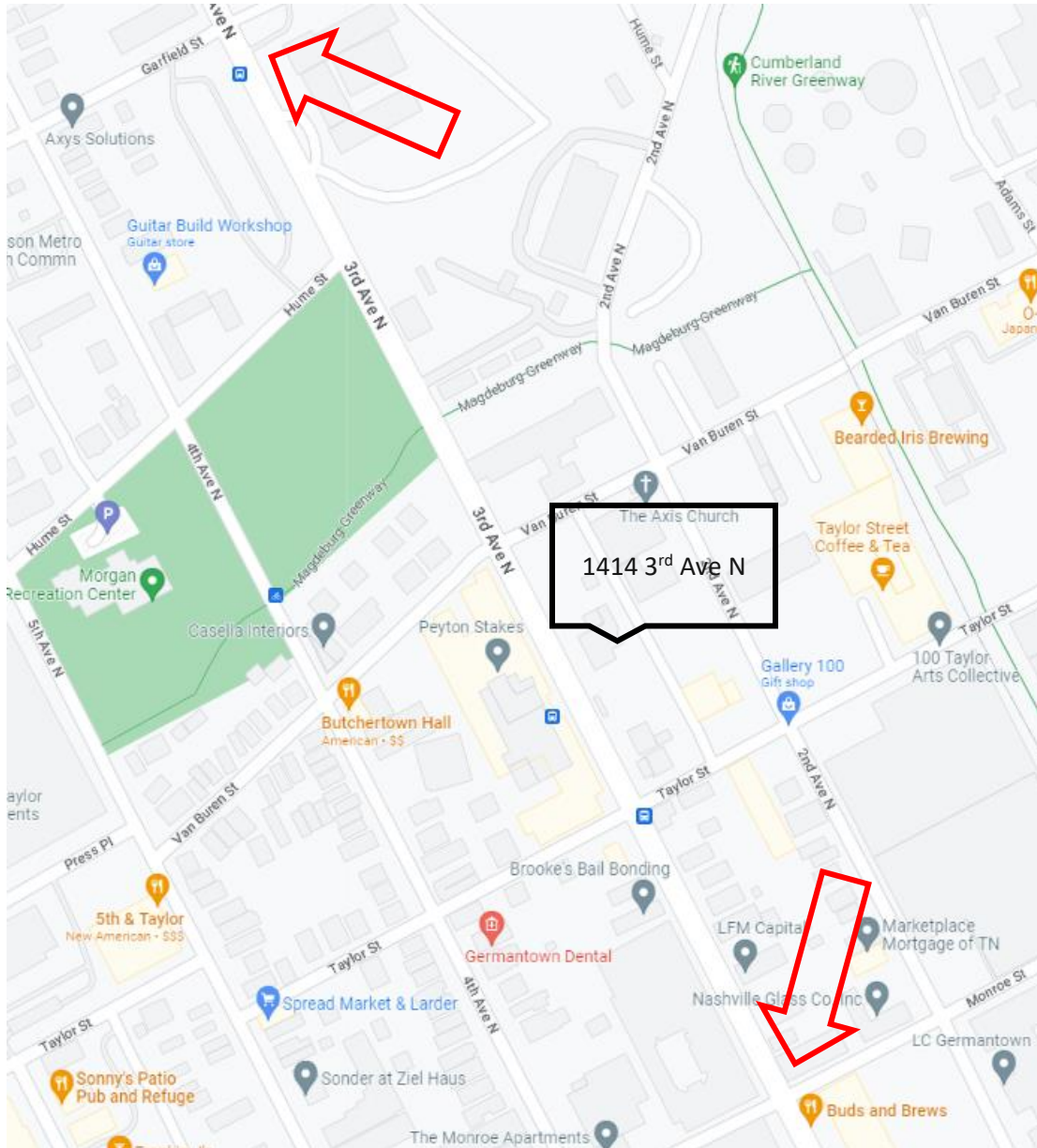
Commissioners are encouraged to contact Nashville Department of Transportation (NDOT) staff prior to the meeting with any questions.

STAFF ANALYSIS:

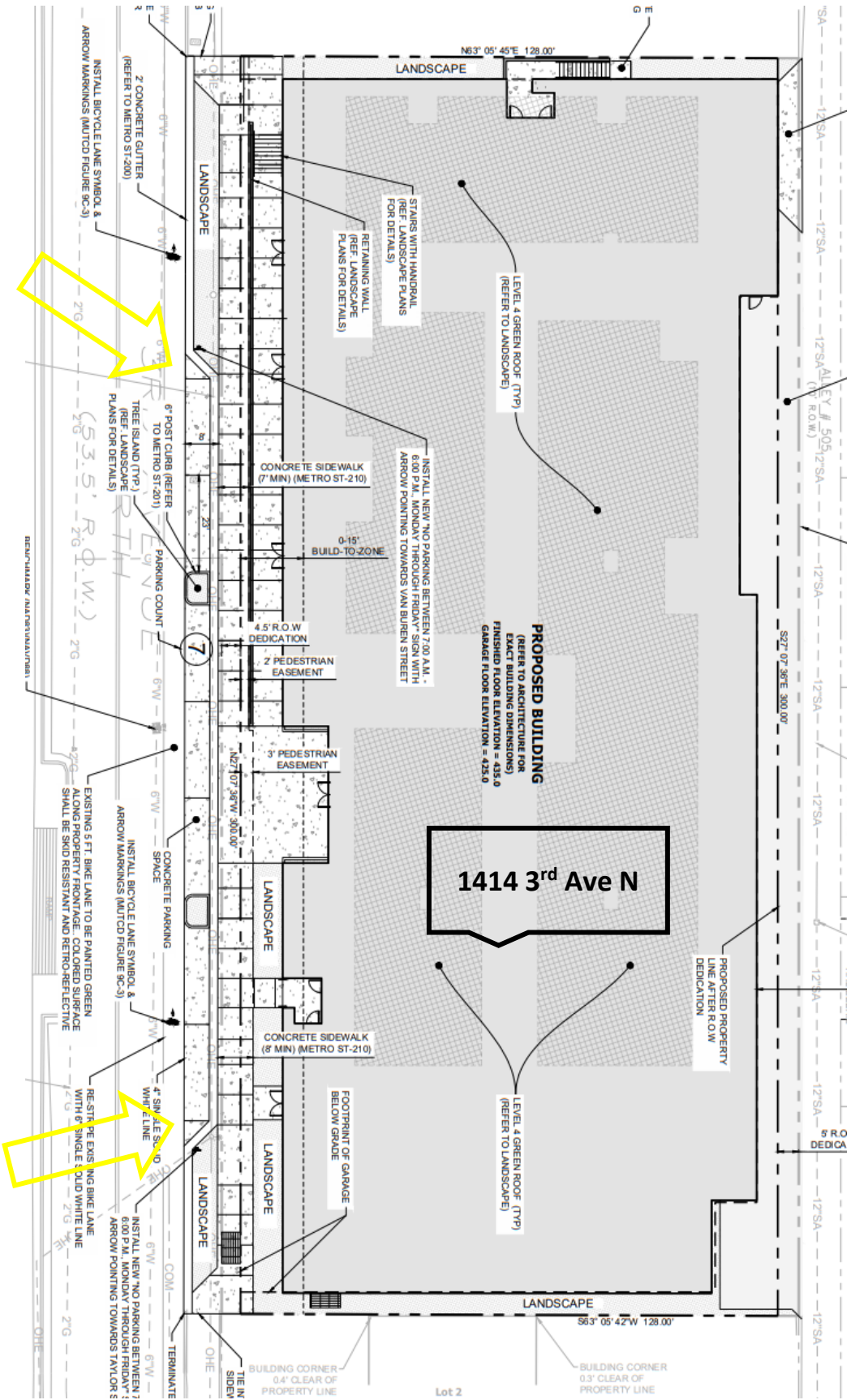
Consent Agenda

Regular Agenda

- 5.01. CD 19: Modification of timed parking restrictions on the east side of 3rd Ave N near 1414 3rd Ave N, requested by CSDG, on behalf of Aster Development, SR TBD.



Analysis: Consultants for CSDG, on behalf of the Aster development at 1414 3rd Ave N are proposing to donate right-of-way, widen a reconstructed sidewalk, and provide on-street parking in designate parking pull-off bays, while retaining the newly-installed bicycle lane on the east side of 3rd Ave N.. Currently, this segment of 3rd Ave N has parking restrictions from 7 AM to 6 PM. In order to accommodate legal on-street parking in new pull-off bays during daytime hours, a revision to the Metro traffic schedule is necessary.



Background: The T&P Commission approved a change to the parking regulation for 3rd Ave N, from Jo Johnston Ave to Rosa Parks Blvd, from NPOS 7AM—5:30 PM to NPOS 7AM—6PM. Since this was implemented, a new northbound bike lane was installed on the east side of 3rd Ave N from just south of Monroe St all the way to Garfield St. Beyond Garfield, the road is shared with bikes. The west side of 3rd Ave N also has a shared use lane, except for a shortened bike lane segment between Van Buren St and Garfield, directly adjacent to Metro Parks property. The remaining curb space on the west side of 3rd Ave N has a substantial number of on-street parking spaces adjacent to residential properties.

While some nearby street signage was changed to indicate No Parking Anytime, signage along other segments of the bike lane remains unchanged.

This proposed change will update the current traffic schedule and will direct NDOT remove the remainder of the existing roadside signage with timed parking restrictions. With this change, NDOT will repost this section with No Parking or Standing Anytime.

Removal of the time restriction in the traffic schedule will prohibit parking in the bicycle lane at all times. The development at 1414 3rd Ave N will be able to install new on-street parking in pull-off bays adjacent to the bicycle lane, and those parking pull-offs will be available 24/7 without encroaching into the bicycle lane.

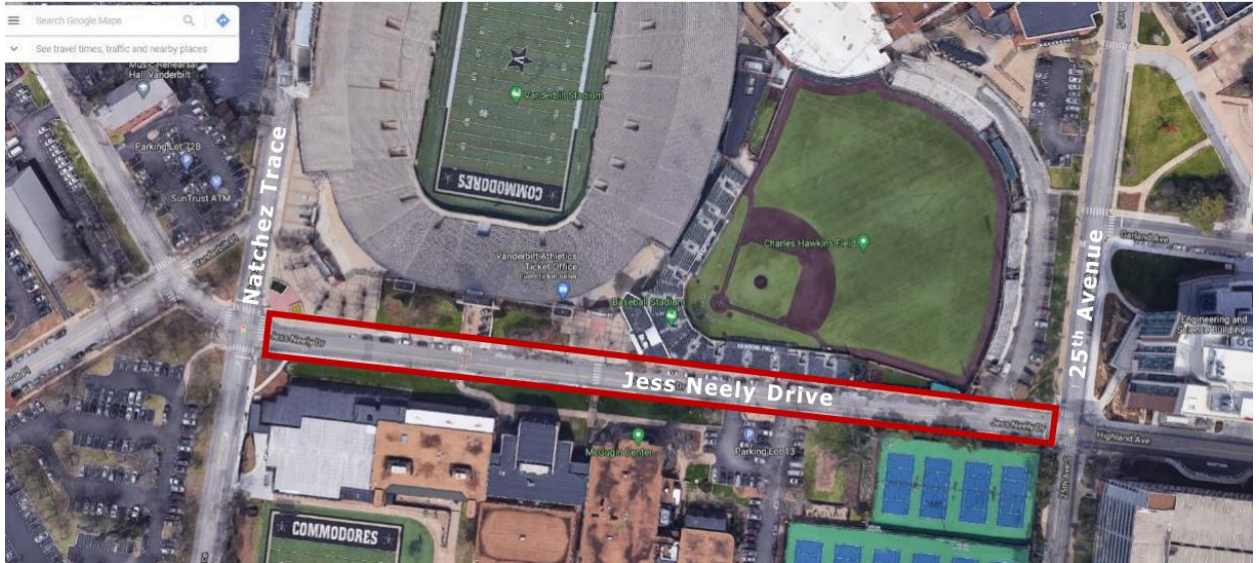


Recommendation: Authorize on-street parking in pull-offs at 1414 3rd Ave N. In addition, approve a modification to the parking regulation on the east side of 3rd Ave N from Monroe St to Garfield St by deleting No Parking or Standing 7AM—6PM and replacing with No Parking or Standing Anytime.

3 rd Ave N	from Monroe St	to Garfield St	East side
DEL	No Parking or Standing 7AM—6PM		
ADD	No Parking or Standing Anytime		

5.02. CD 18: Authorization for permanent closure of Jess Neely Dr to vehicular traffic from Natchez Trace to 25th Ave S, requested by Vanderbilt, SR TBD.

JESS NEELY: PUBLIC VEHICULAR CLOSURE



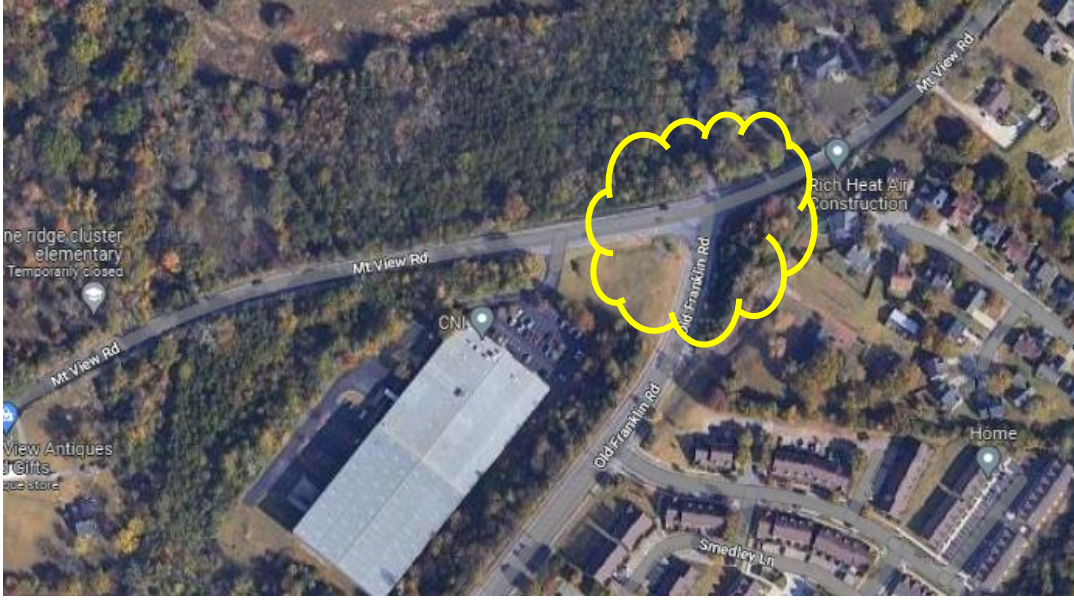
Analysis: This request is from Vanderbilt and is related to new campus improvements. A separate road closure study has been performed by KCI for Vanderbilt.

Recommendation: Approve request from Vanderbilt to close Jess Neely Drive to vehicular traffic from Natchez Trace to 25th Ave N.

5.03. CD 32: Authorization for a new traffic signal at Mt. View Rd & Old Franklin Rd, requested by NDOT, SR 1501418.

Analysis: Located in Antioch this intersection is configured as a three-legged intersection with Old Franklin Rd located in the stem. Flashers have been installed since before 2007. The proposed signal meets warrants for a new installation.

Recommendation: Authorize a new traffic signal at Mt View Rd and Old Franklin Rd.

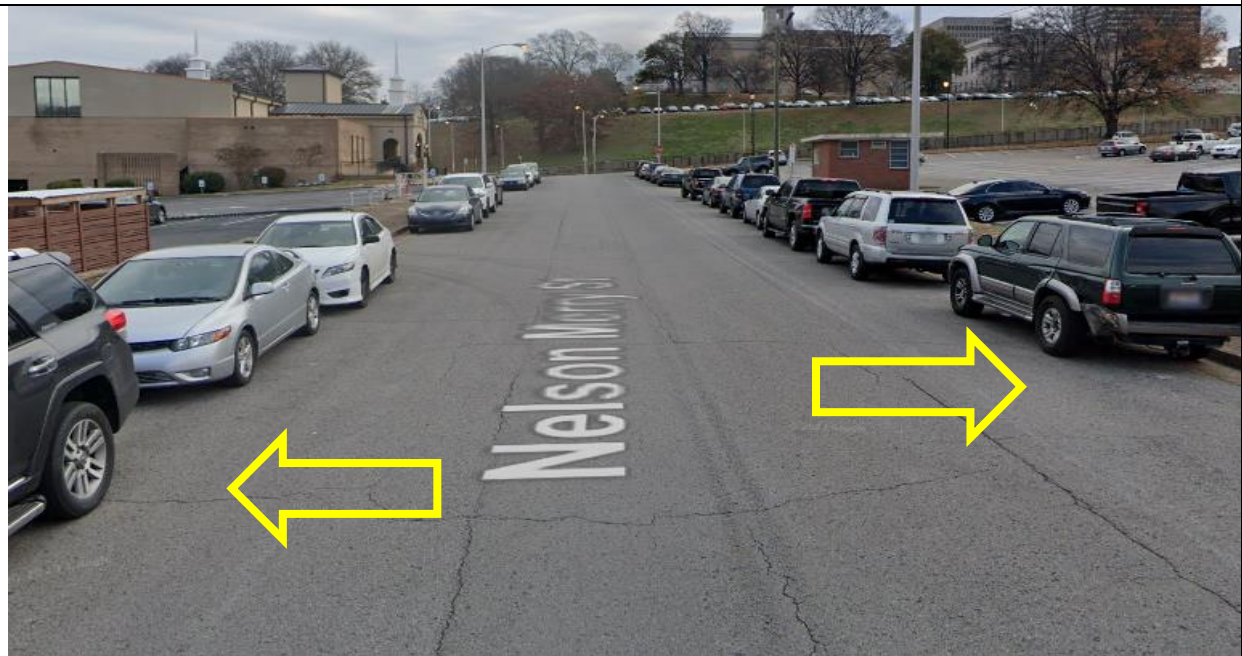


Unfinished Business

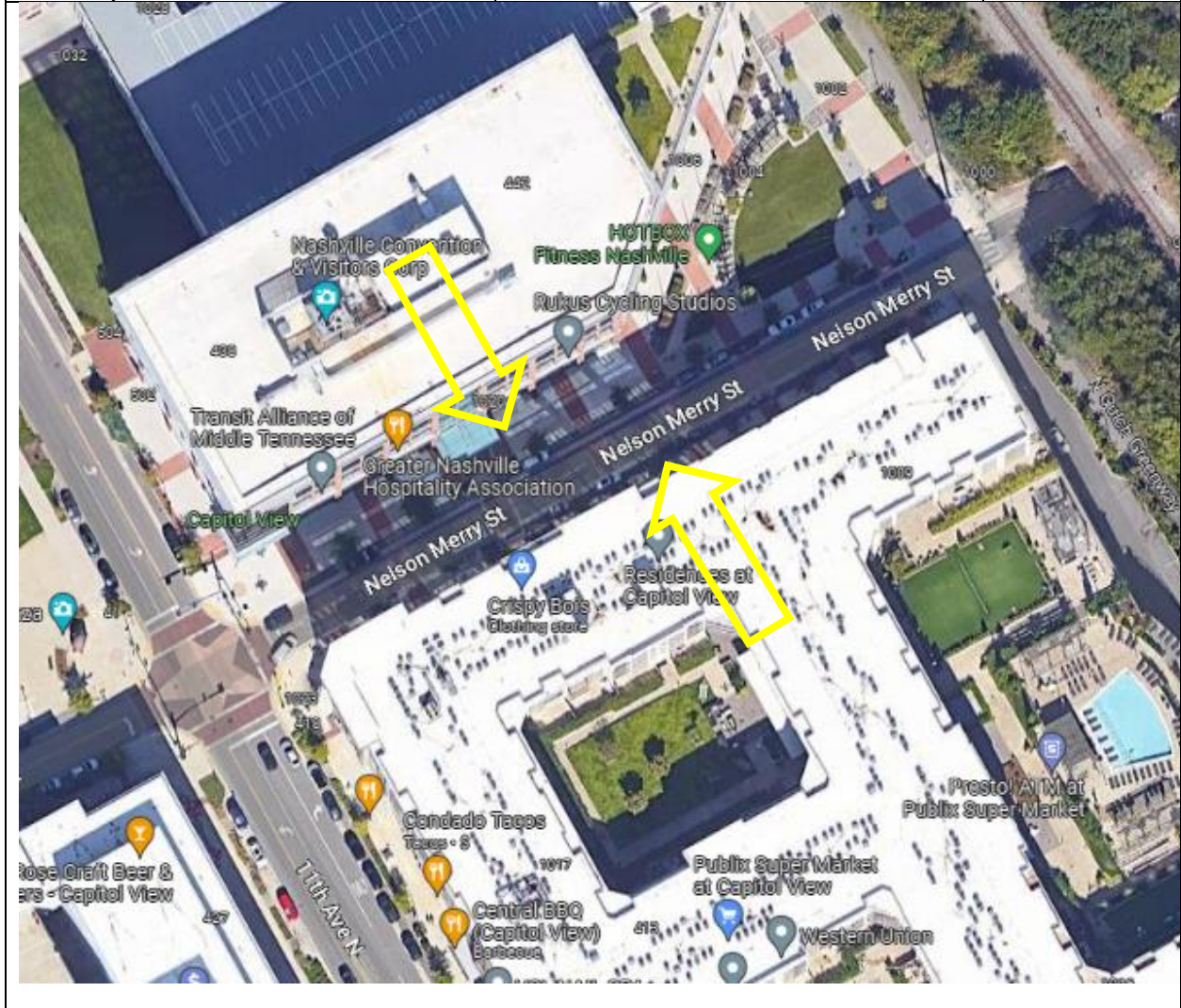
- 6.01. CD Various: Authorization for new smart parking meters at multiple locations, SR TBD. Requested by NDOT.

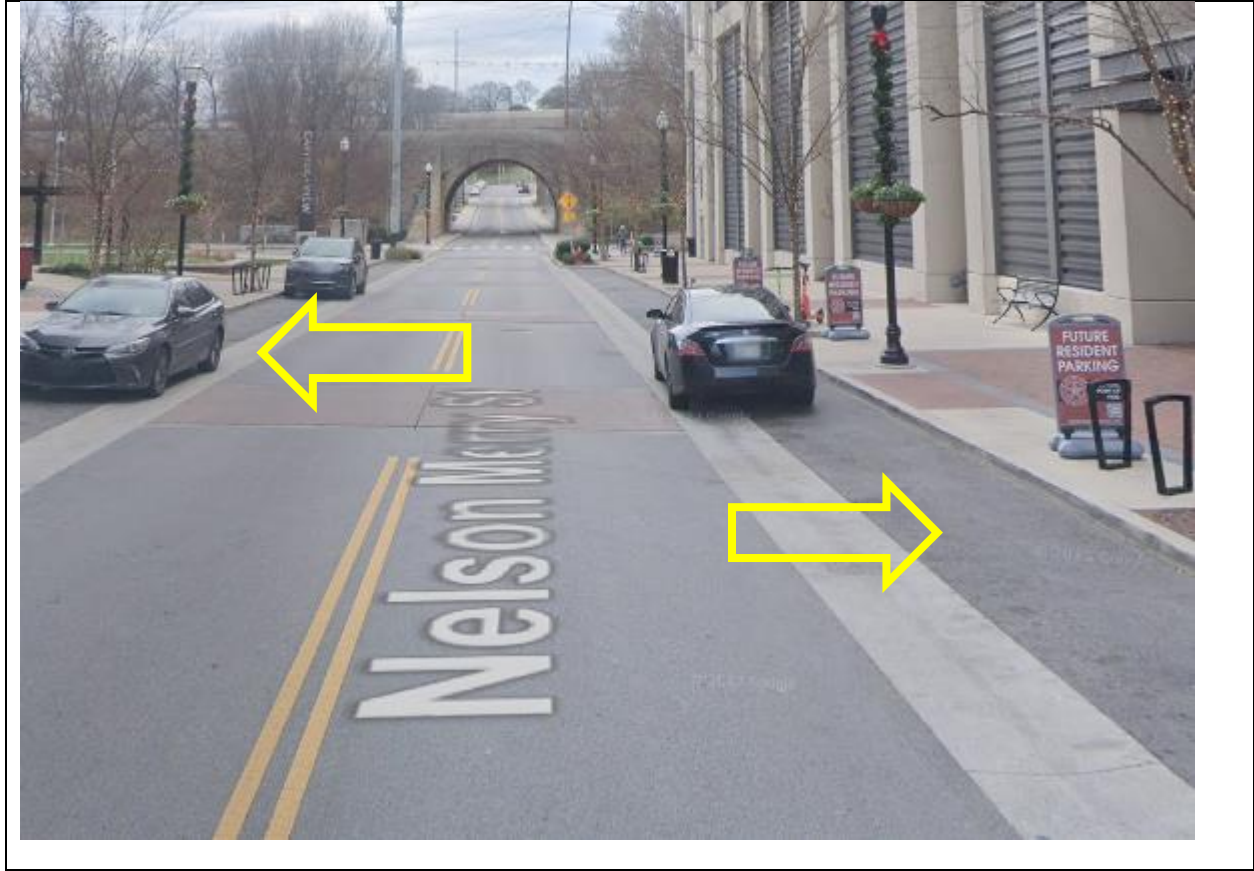
Analysis: These locations were deferred one month at the March meeting. NDOT management is currently working with stakeholders about these requested meter locations, including development of a master plan for Capitol View. These locations should be deferred indefinitely while NDOT performs data collection for master parking plan. These locations may be resubmitted at a later date.

Location	Comments	Pavement width
6.01.01—North and South side of Nelson Merry St between Rev Kelly M Smith Way to Rosa L Parks Blvd	There is existing head-in handicap parking for a church on NE end, which will not be affected by new metered parking. State parking abuts this location to the south.	40 ft

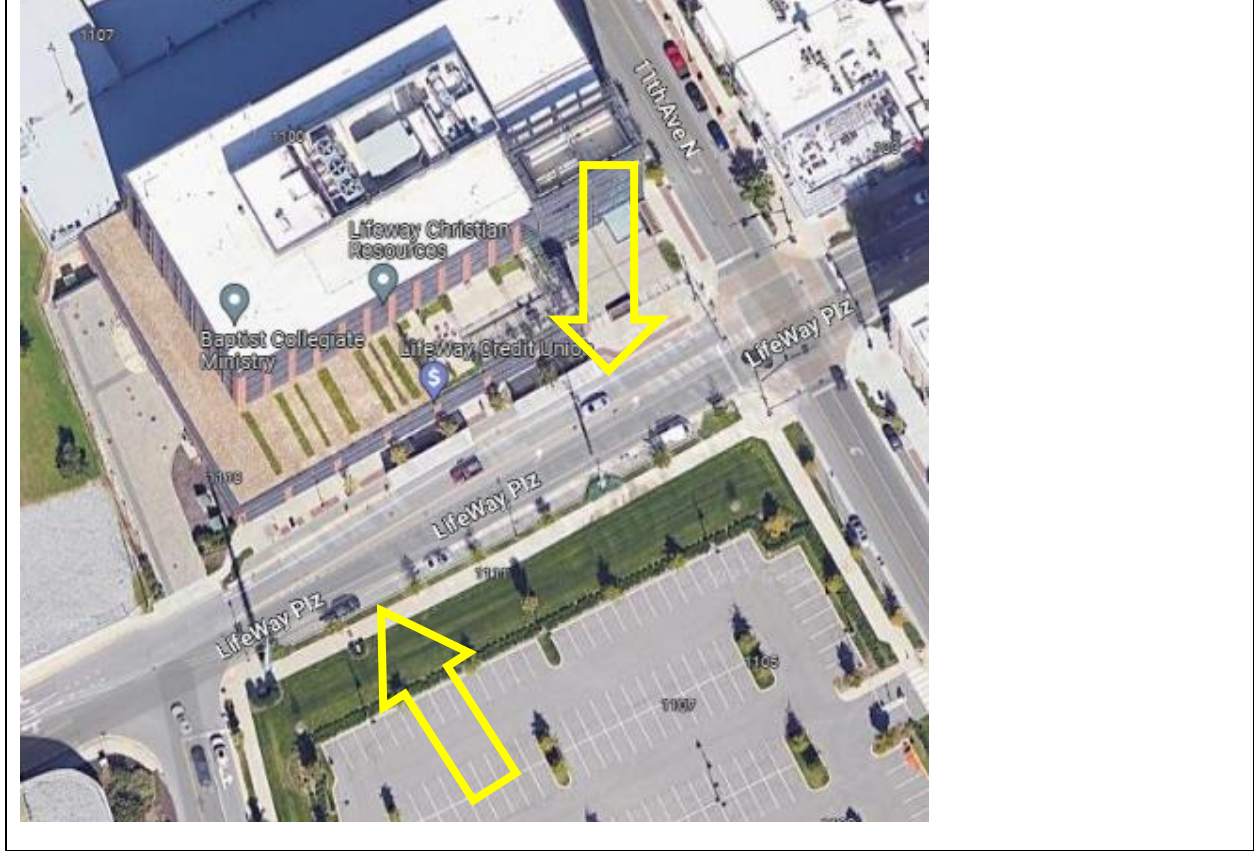


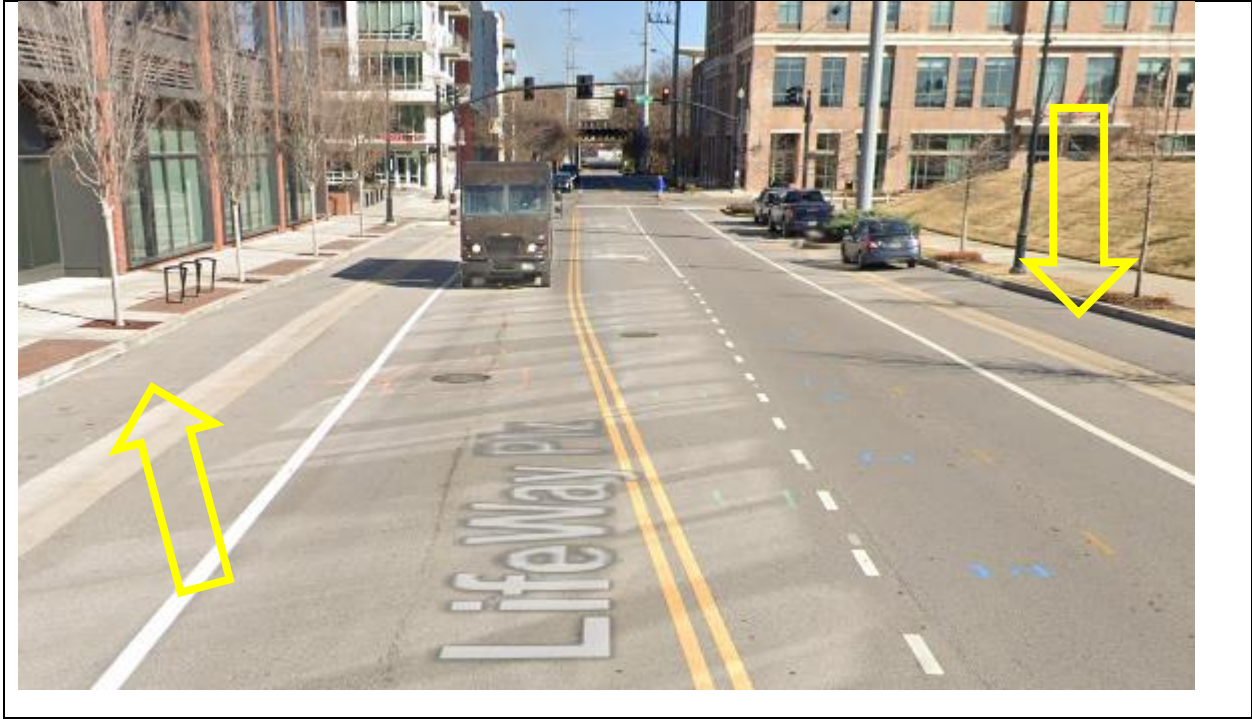
6.01.02—North and South side of Nelson Merry St between 11 th Ave N & North Gulch Greenway	Parking only in designated pull-offs.	36 ft
---	---------------------------------------	-------





<p>6.01.03—North and South side of Lifeway Plaza between 11th Ave N & George L Davis Blvd</p>	<p>Parking only in designated pull-offs. New meters will not affect existing bicycle lane. There are existing 2-hour parking limit signs on Lifeway Plaza, but these appear to be third party signs and no parking time restrictions are in the Metro traffic schedule. These unauthorized signs will be removed by NDOT.</p>	<p>60 ft +/-</p>
--	---	------------------





6.01.04—North side of LifeWay Plaza between 11 th Ave N and 10 th Ave N and south side of LifeWay Plaza at 10 th Ave N	Parking only in designated pull-offs.	48 ft +/-
---	---------------------------------------	-----------



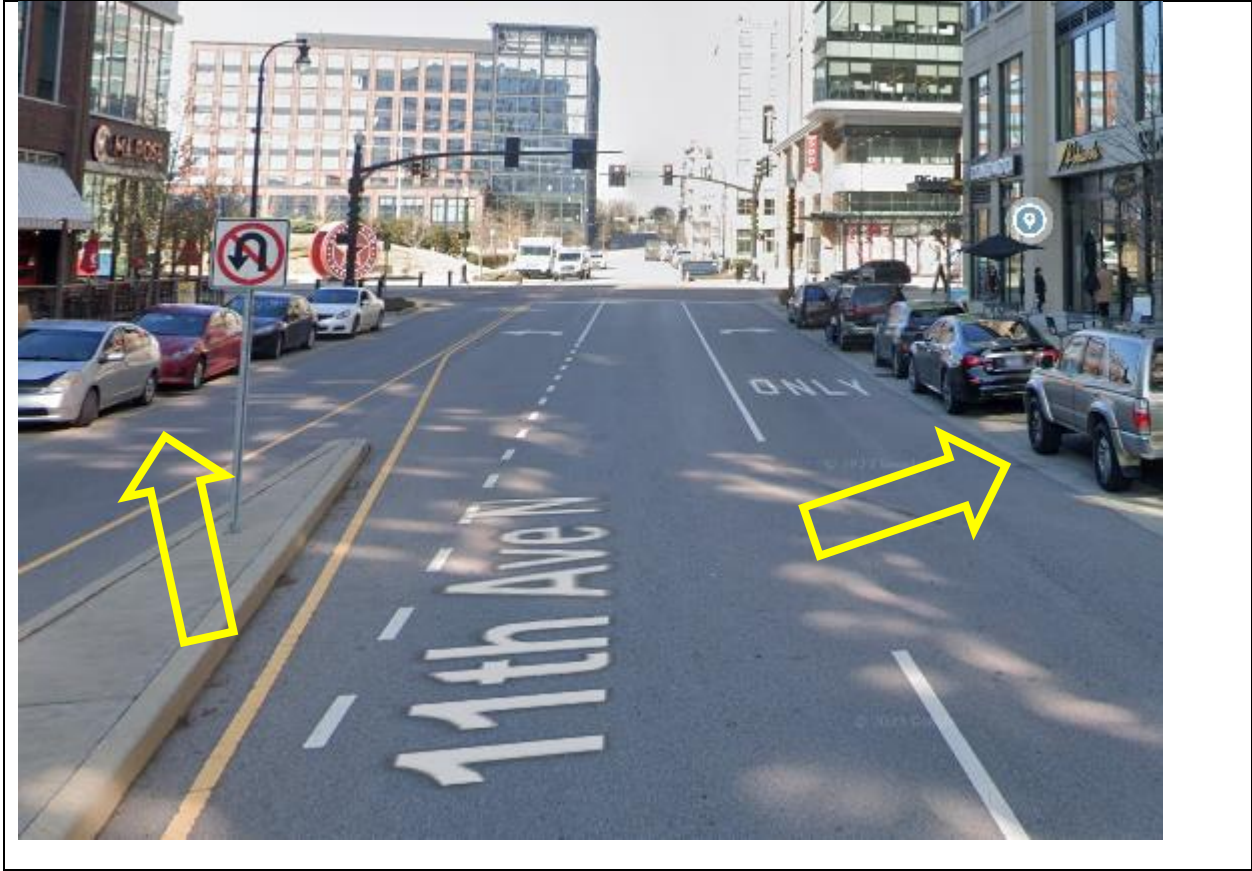


6.01.05—East & West side of 11th Ave N
between Dr. MLK Blvd & Lifeway Plaza

Parking only in designated pull-offs.

48 ft +/-





Recommendation: Defer these five meter authorization requests indefinitely.

- 6.02. CD 19: Authorize removal of 17 metered spaces and three existing loading zones; traffic signal modifications at 3rd Ave N & Deaderick, 3rd Ave N & Union, and 3rd Ave N & Commerce; and signage & pavement marking modifications to facilitate installation of a new bicycle lane on 3rd Ave N from James Robertson Pkwy to Broadway, requested by NDOT, SR 1553379.

Analysis: This item was deferred to April 2023 from the December 2022 Traffic & Parking Commission meeting. At the time of the December meeting, it was anticipated that the Connect Downtown curb study would be complete.

Recommendation: Defer until completion of the Connect Downtown curb study.

- 6.03. Update on parking program
- 6.04. Approval of sidewalk vending regulation restricted area

New Business

- 7.01 Presentation on lowering posted speed limits on local residential streets within the GSD
- 7.02 Policy on Residential Permit Parking

Other Items