

ESTIMATED QUANTITIES

SPEED CUSHIONS

6' X 10.5' SPEED CUSHION WITH ONE ARROW 6

6' X 10.5' SPEED CUSHION TWO ARROWS 3

SIGNING

W17-1 (VAR.) "SPEED CUSHION AHEAD" SIGN (30" X 30") 2

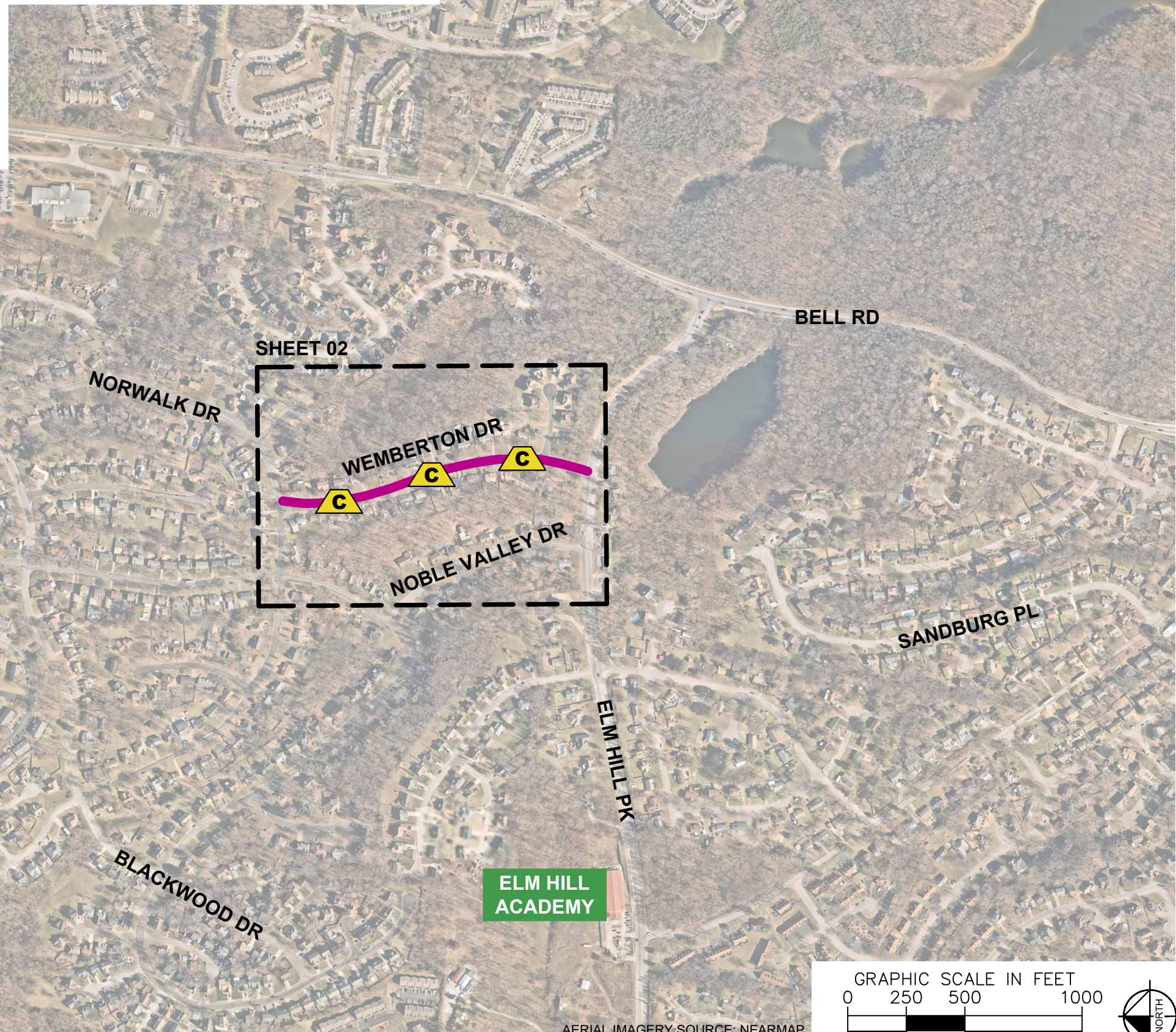
W13-1P "20 M.P.H" SIGN (18" X 18") 2

NOTE: ALL LOCATIONS ARE REFERENCED FROM CENTERLINE OF DRIVEWAYS OR OTHER LANDMARKS TO THE CENTER OF SPEED CUSHIONS OR SIGNS.

LEGEND

 LIMITS OF TRAFFIC CALMING PROJECT

 SPEED CUSHIONS



NDOT

WEMBERTON DRIVE
TRAFFIC CALMING
NASHVILLE, TN

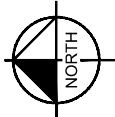
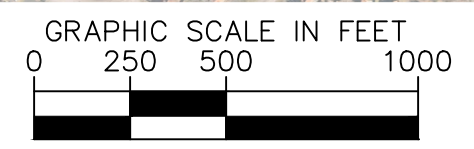


Kimley»Horn

DESIGNED BY:	XXX
DRAWN BY:	JCB
CHECKED BY:	NDOT
DATE:	5/16/2024
KIMLEY-HORN PROJECT NO. 118900046	

KEY

SHEET NUMBER
01



AERIAL IMAGERY SOURCE: NEARMAP

This document, together with the concepts and designs presented herein, is intended only for the specific purpose and client for which it was prepared. Reuse of and improper reliance on this document without written authorization and adaptation by Kimley-Horn and Associates, Inc. shall be without liability to Kimley-Horn and Associates, Inc.

SPEED CUSHIONS



**WEMBERTON DRIVE
TRAFFIC CALMING**
NASHVILLE, TN



DESIGNED BY:	XXX
DRAWN BY:	JCB
CHECKED BY:	NDOT
DATE:	5/16/2024
KIMLEY-HORN PROJECT NO.	118900046

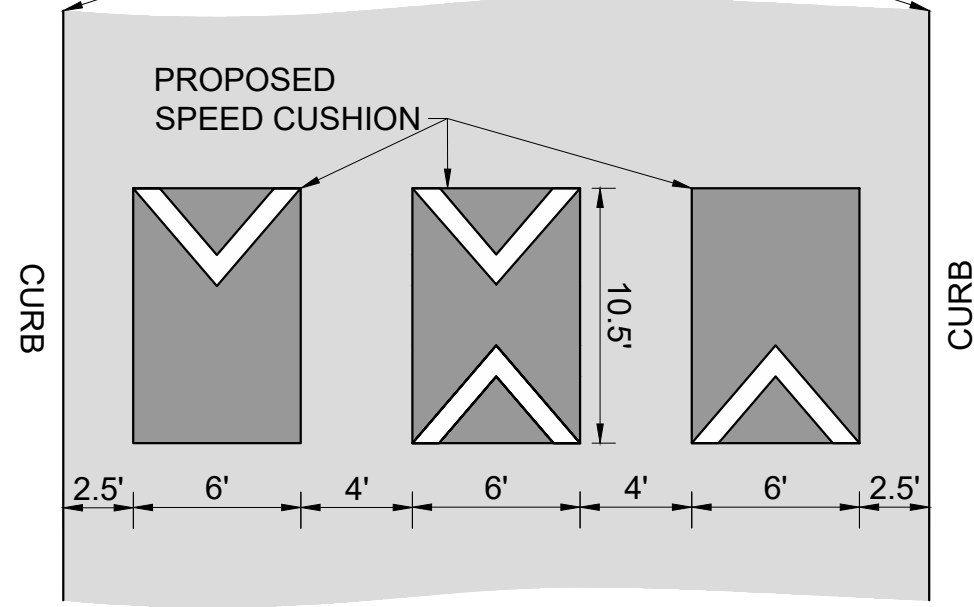
CONCEPT
SHEET NUMBER
02

This document, together with the concepts and designs presented herein, as an instrument of service, is intended only for the specific purpose and client for which it was prepared. Reuse of and improper reliance on this document without written authorization and adaptation by Kimley-Horn and Associates, Inc. shall be without liability to Kimley-Horn and Associates, Inc.

CONFIGURATION A

31' OF PAVEMENT

EXISTING EDGE OF PAVEMENT



WEMBERTON DRIVE
TRAFFIC CALMING
NASHVILLE, TN



DESIGNED BY:	XXX
DRAWN BY:	JCB
CHECKED BY:	NDOT
DATE:	5/16/2024
KIMLEY-HORN PROJECT NO.	118800046

DETAIL

SHEET NUMBER
03