

ESTIMATED QUANTITIES

SPEED CUSHIONS

6' X 7' SPEED CUSHION WITH ONE ARROW	12
--------------------------------------	----

SIGNING

W17-1 (VAR.) "SPEED CUSHION" SIGN (30" X 30")	12
---	----

W13-1P "20 M.P.H." SIGN (18" X 18")	12
-------------------------------------	----

W5-1 "ROAD NARROWS" SIGN (36" X 36")	1
--------------------------------------	---

PAVEMENT MARKINGS AND DELINEATORS

4" WHITE FLEXIBLE DELINEATOR	25
------------------------------	----




4" SOLID WHITE LINE (LF)	25
--------------------------	----

4" DOUBLE SOLID WHITE LINE (LF)	175
---------------------------------	-----

6" SOLID WHITE LINE (LF)	180
--------------------------	-----

NOTE: ALL LOCATIONS ARE REFERENCED FROM CENTERLINE OF DRIVEWAYS OR OTHER LANDMARKS TO THE CENTER OF SPEED CUSHIONS OR SIGNS.

LEGEND

-  LIMITS OF TRAFFIC CALMING PROJECT
-  SPEED CUSHIONS
-  BULB-OUTS

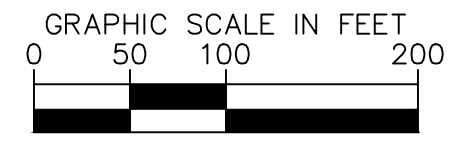
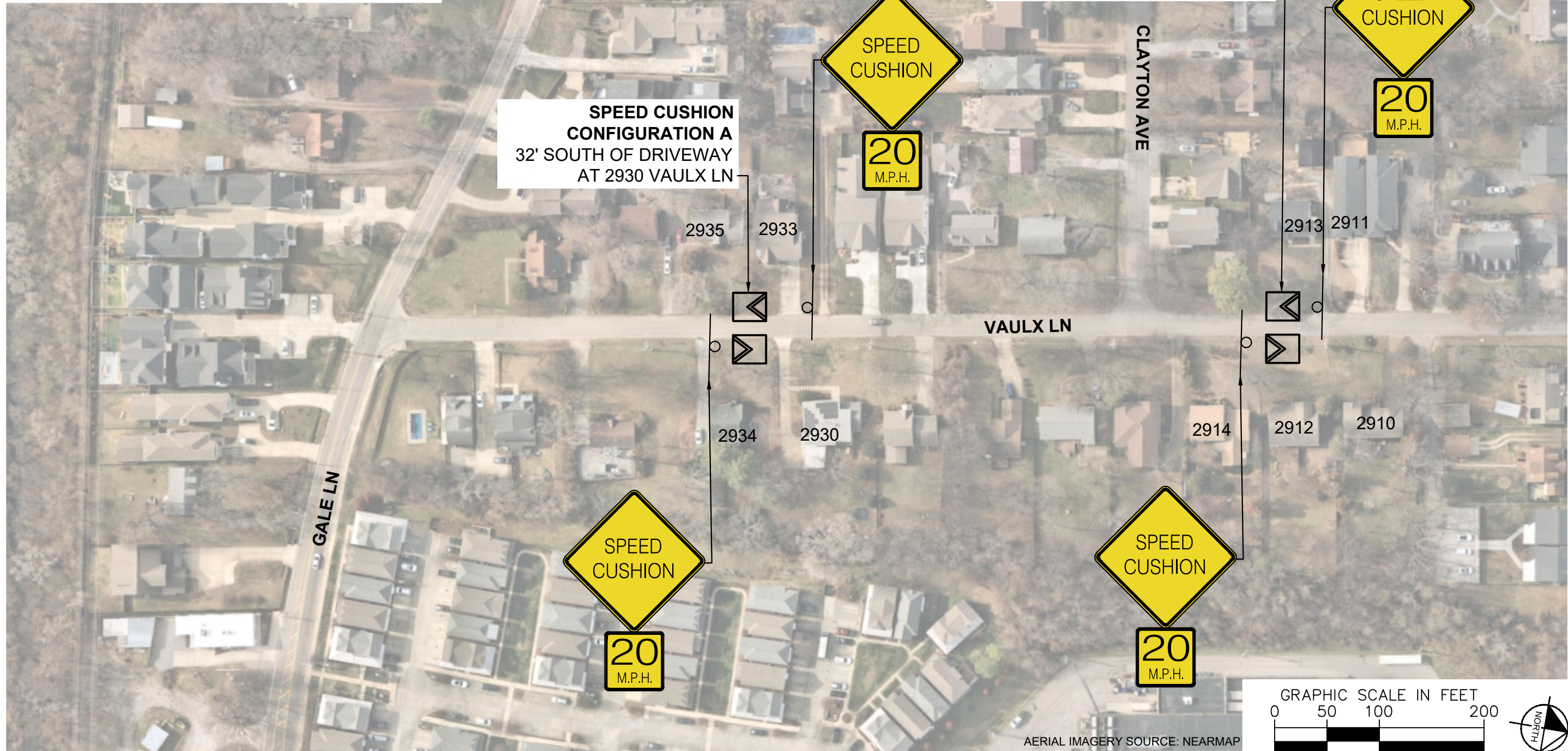
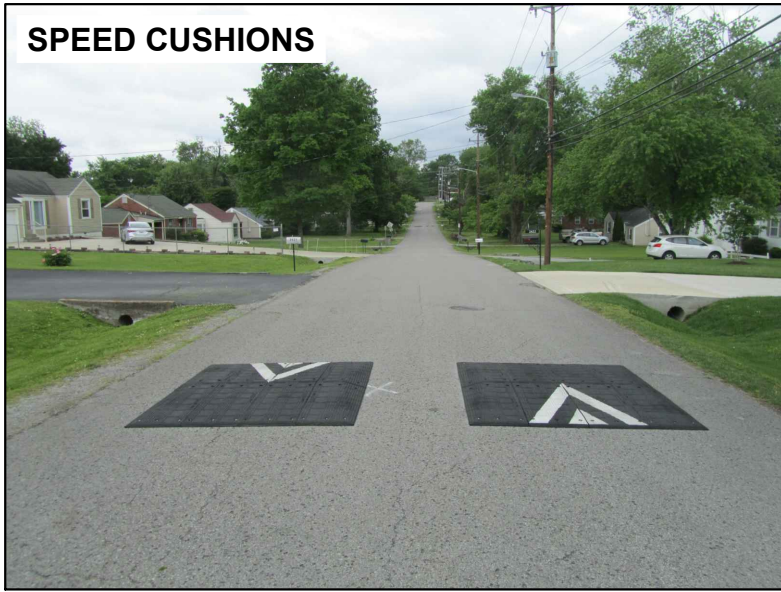


DESIGNED BY:	JLH
DRAWN BY:	JCB
CHECKED BY:	NDOT
DATE:	5/22/2024
KIMLEY-HORN PROJECT NO.:	118800046

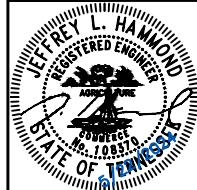
KEY

SHEET NUMBER
01

SPEED CUSHIONS



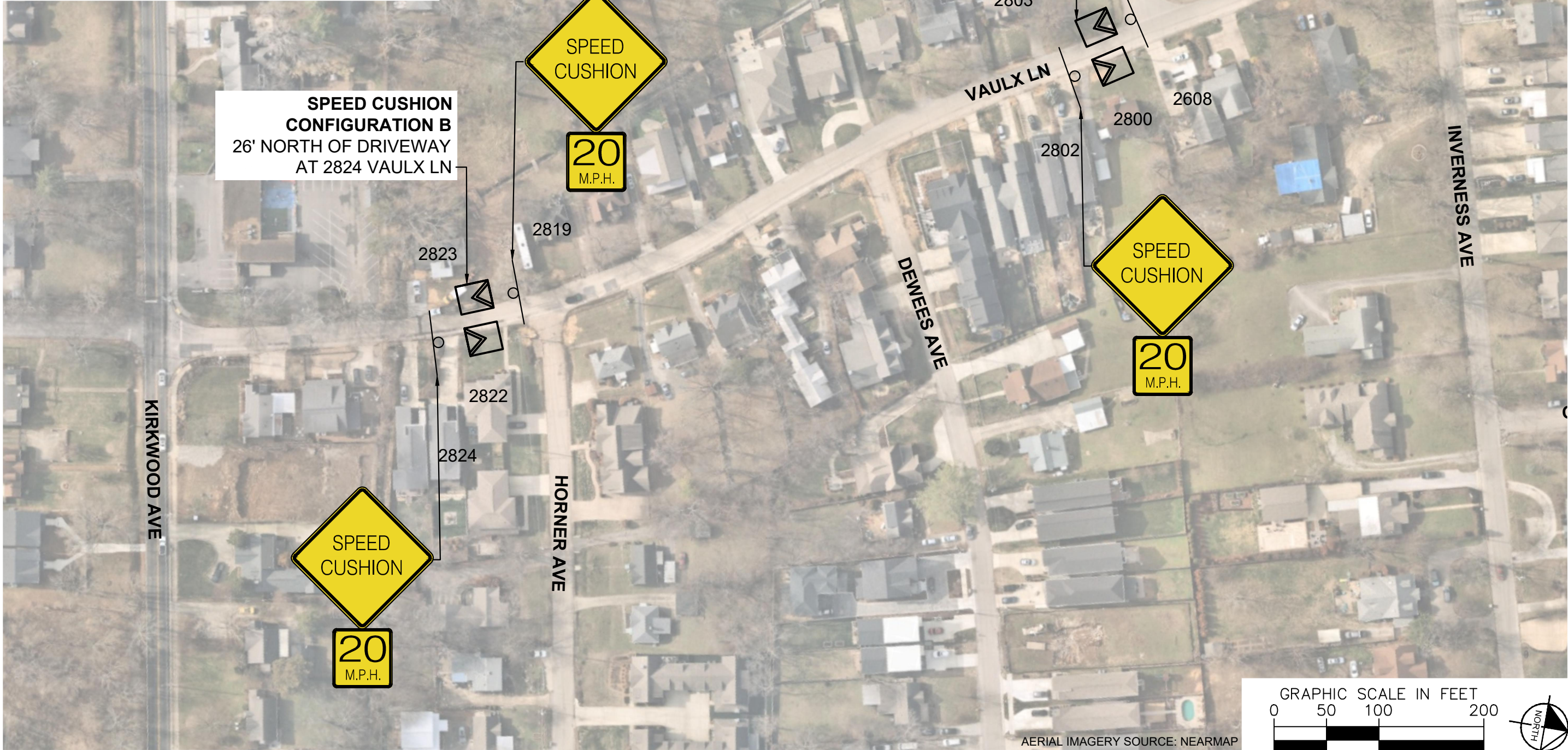
AERIAL IMAGERY SOURCE: NEARMAP



DESIGNED BY:	JLH
DRAWN BY:	JCB
CHECKED BY:	NDOT
DATE:	5/22/2024
KIMLEY-HORN PROJECT NO.:	118900046

This document, together with the concepts and designs presented herein, is intended only for the specific purpose and client for which it was prepared. Reuse of and improper reliance on this document without written authorization and adaptation by Kimley-Horn and Associates, Inc. shall be without liability to Kimley-Horn and Associates, Inc.

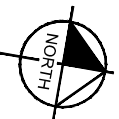
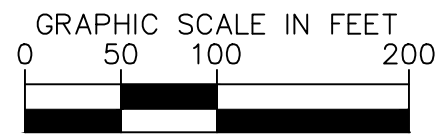
SPEED CUSHIONS



DESIGNED BY:	JLH
DRAWN BY:	JCB
CHECKED BY:	NDOT
DATE:	5/22/2024
KIMLEY-HORN PROJECT NO.:	118900046

CONCEPT

SHEET NUMBER
03



AERIAL IMAGERY SOURCE: NEARMAP

SPEED CUSHIONS

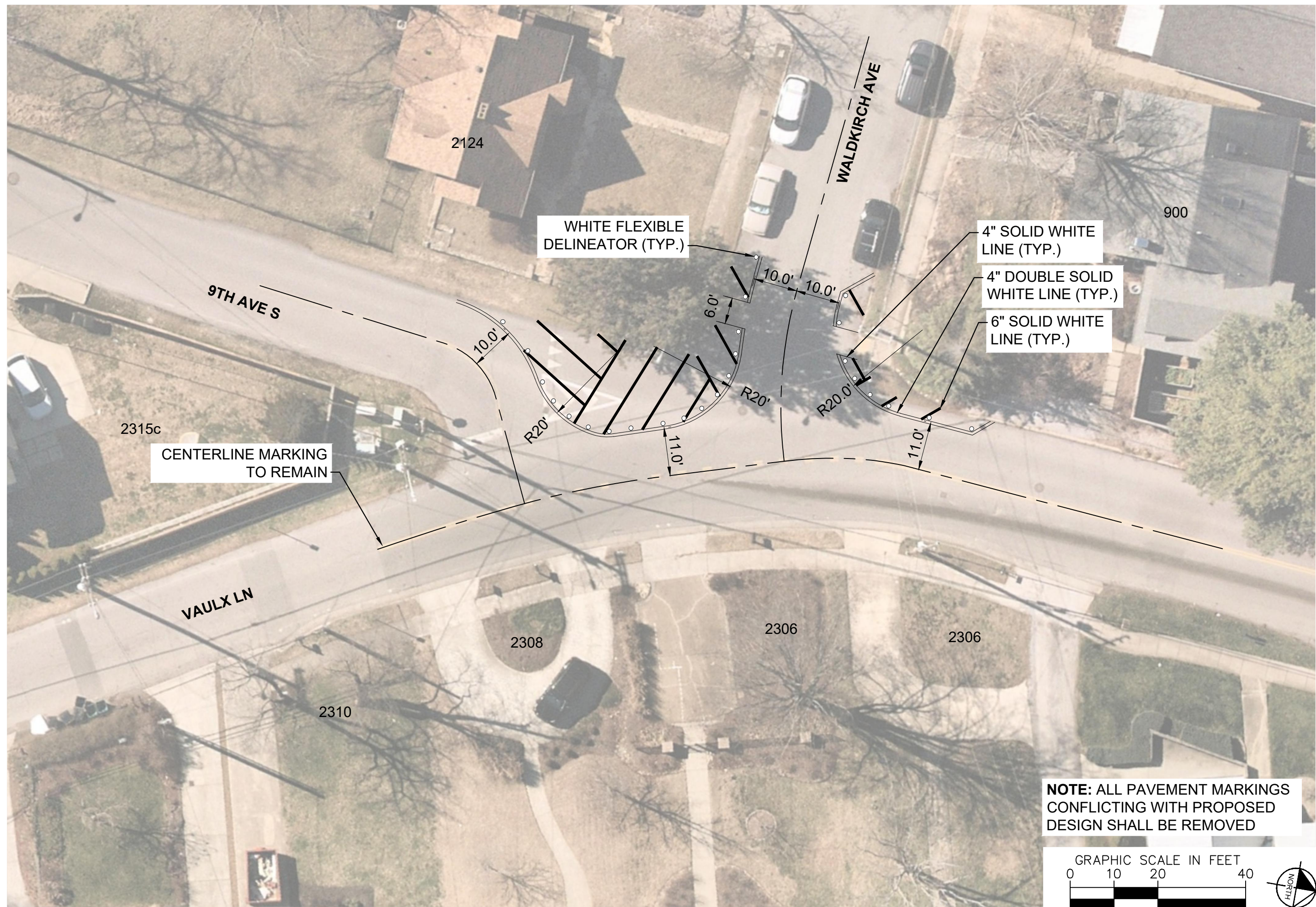


DESIGNED BY:	JLH
DRAWN BY:	JCB
CHECKED BY:	NDOT
DATE:	5/22/2024
KIMLEY-HORN PROJECT NO.:	118900046

CONCEPT

SHEET NUMBER
04

This document, together with the concepts and designs presented herein, is intended only for the specific purpose and client for which it was prepared. Reuse of and improper reliance on this document without written authorization and adaptation by Kimley-Horn and Associates, Inc. shall be without liability to Kimley-Horn and Associates, Inc.



CENTERLINE MARKING TO REMAIN

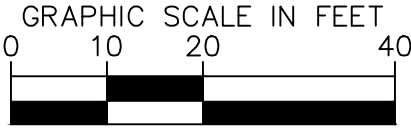
WHITE FLEXIBLE DELINEATOR (TYP.)

4" SOLID WHITE LINE (TYP.)

4" DOUBLE SOLID WHITE LINE (TYP.)

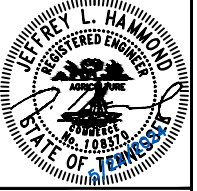
6" SOLID WHITE LINE (TYP.)

NOTE: ALL PAVEMENT MARKINGS CONFLICTING WITH PROPOSED DESIGN SHALL BE REMOVED



NDOT

VAULX LANE
TRAFFIC CALMING
NASHVILLE, TN

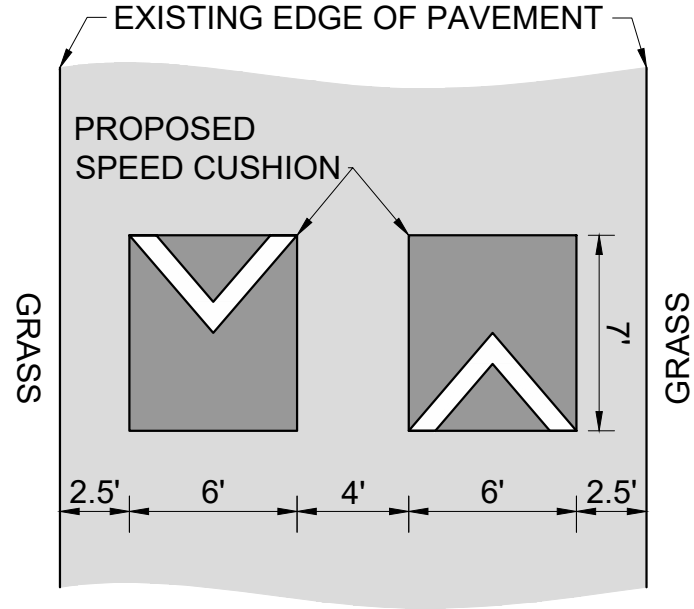


DESIGNED BY: JLH
DRAWN BY: JCB
CHECKED BY: NDOT
DATE: 5/22/2024
KIMLEY-HORN PROJECT NO. 118900046

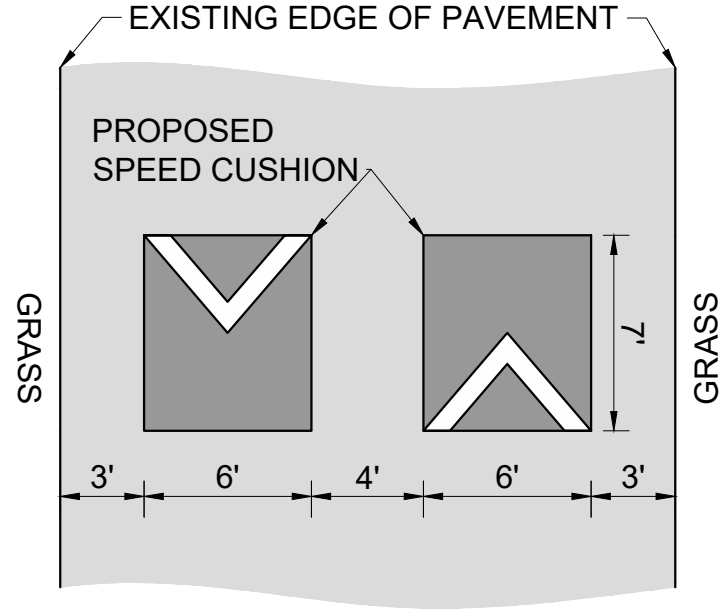
CONCEPT
SHEET NUMBER
05

This document, together with the concepts and designs presented herein, as an instrument of service, is intended only for the specific purpose and client for which it was prepared. Reuse of and improper reliance on this document without written authorization and adaptation by Kimley-Horn and Associates, Inc. shall be without liability to Kimley-Horn and Associates, Inc.

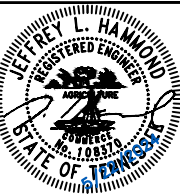
CONFIGURATION A 21' OF PAVEMENT



CONFIGURATION B 22' OF PAVEMENT



VAULX LANE
TRAFFIC CALMING
NASHVILLE, TN



DESIGNED BY:	JLH
DRAWN BY:	JCB
CHECKED BY:	NDOT
DATE:	5/22/2024
KIMLEY-HORN PROJECT NO.	118800046

DETAIL

SHEET NUMBER
06