

### ESTIMATED QUANTITIES

#### SPEED CUSHIONS

6' X 10.5' SPEED CUSHION WITH ONE ARROW	6
---	---

#### SIGNING




W17-1 (VAR.) "SPEED CUSHIONS AHEAD" SIGN (30" X 30")	2
W13-1P "20 M.P.H" SIGN (18" X 18")	2
STOP SIGN (RELOCATED)	2

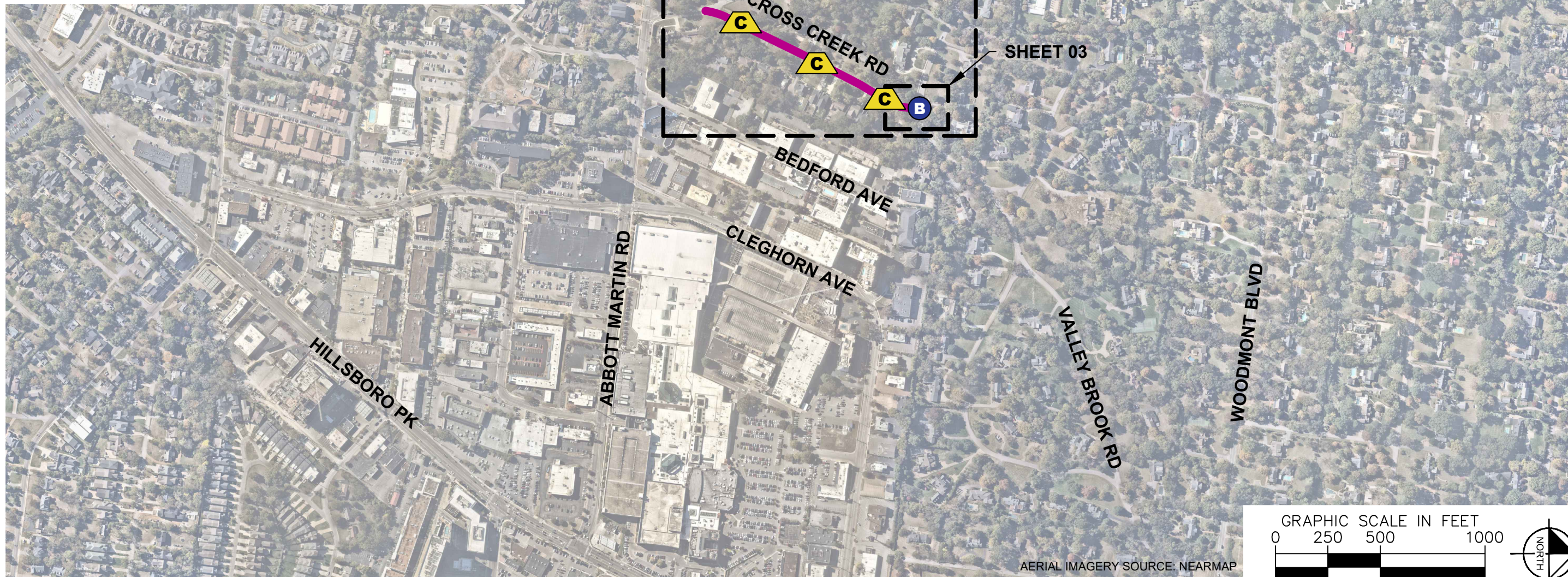
#### PAVEMENT MARKINGS AND DELINEATORS

4" SOLID WHITE LINE (LF)	21
4" DOUBLE SOLID WHITE LINE (LF)	402
6" SOLID WHITE LINE (LF)	304
24" WHITE STOP BAR (LF)	30
BLACK/WHITE RUBBER SPEED BUMP (10')	1
BLACK/WHITE RUBBER SPEED BUMP (19')	1

**NOTE:** ALL LOCATIONS ARE REFERENCED FROM CENTERLINE OF DRIVEWAYS OR OTHER LANDMARKS TO THE CENTER OF SPEED CUSHIONS OR SIGNS.

### LEGEND

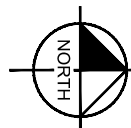
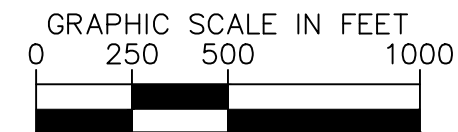
-  LIMITS OF TRAFFIC CALMING PROJECT
-  SPEED CUSHIONS
-  BULB-OUTS



CROSS CREEK ROAD  
TRAFFIC CALMING  
NASHVILLE, TN



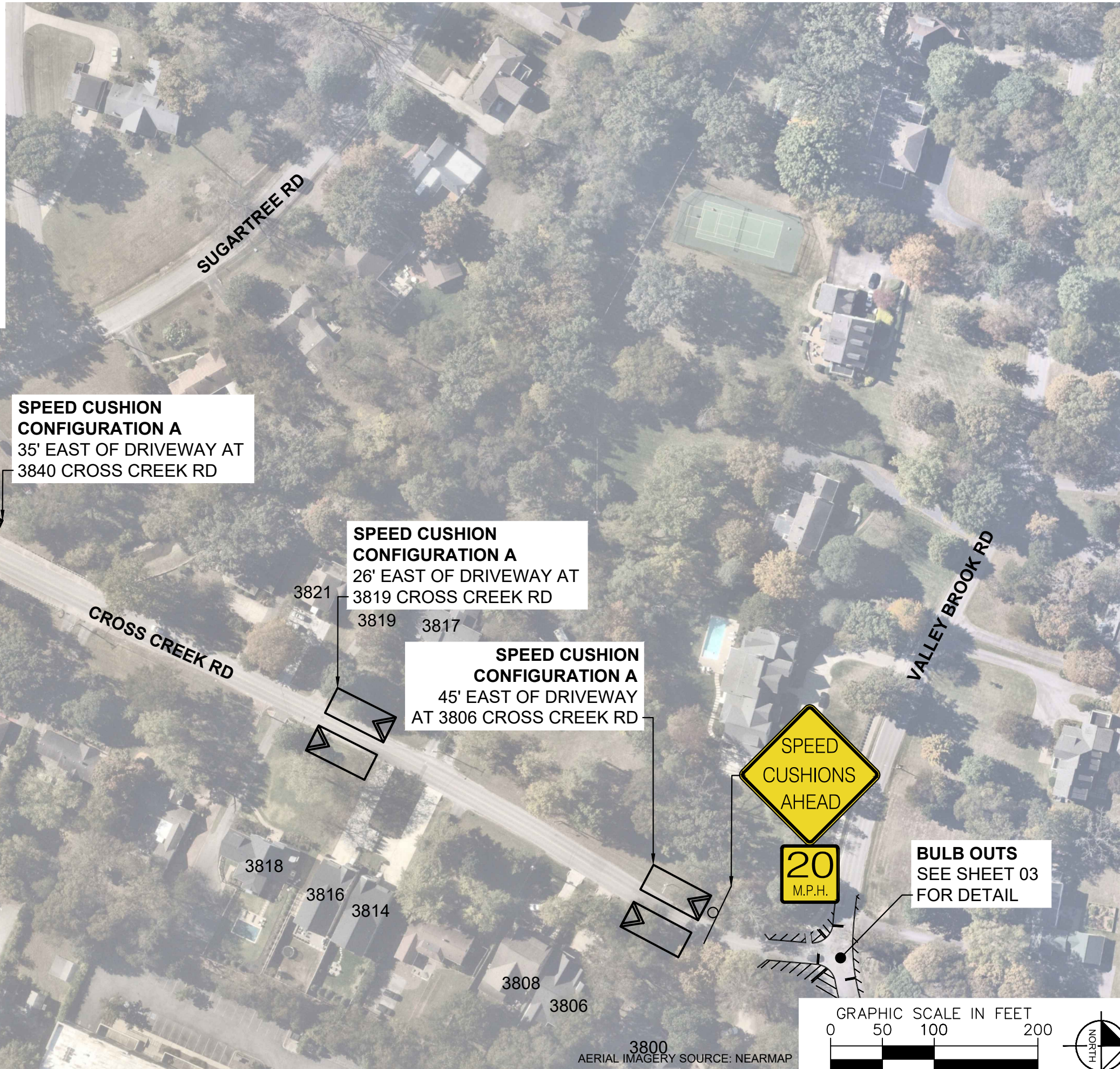
DESIGNED BY:	DJG
DRAWN BY:	TWR
CHECKED BY:	NDOT
DATE:	12/12/2023
KIMLEY-HORN PROJECT NO. 118900036	



### KEY

SHEET NUMBER  
**01**

**SPEED CUSHIONS**



**SPEED CUSHION CONFIGURATION A**  
35' EAST OF DRIVEWAY AT  
3840 CROSS CREEK RD

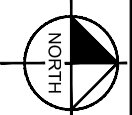
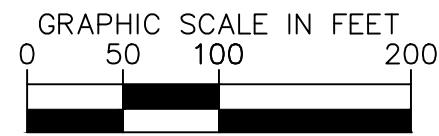
**SPEED CUSHION CONFIGURATION A**  
26' EAST OF DRIVEWAY AT  
3819 CROSS CREEK RD

**SPEED CUSHION CONFIGURATION A**  
45' EAST OF DRIVEWAY  
AT 3806 CROSS CREEK RD

**BULB OUTS**  
SEE SHEET 03  
FOR DETAIL

**20**  
M.P.H.

**SPEED CUSHIONS AHEAD**  
**20**  
M.P.H.



3800  
AERIAL IMAGERY SOURCE: NEARMAP



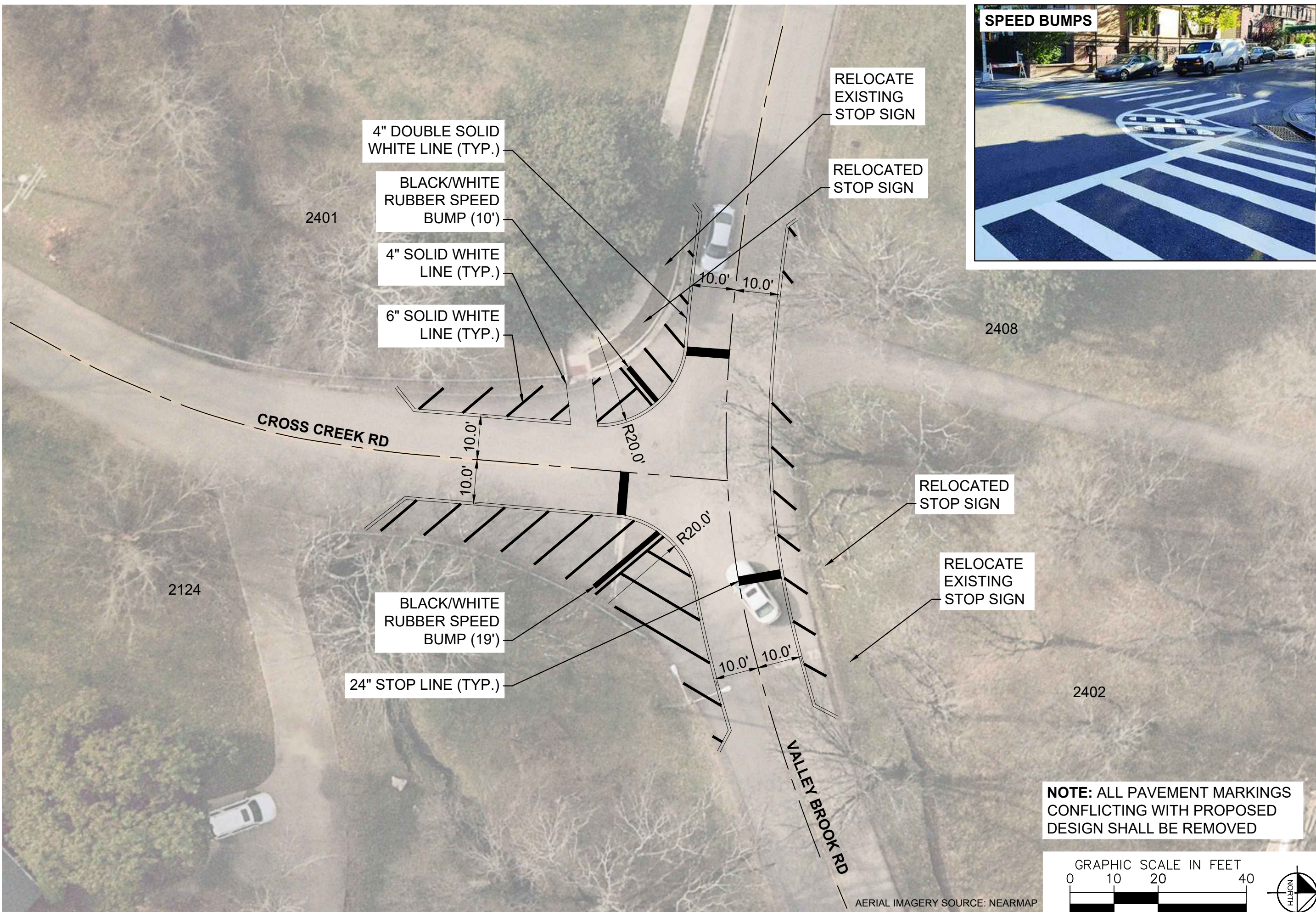
**CROSS CREEK ROAD**  
**TRAFFIC CALMING**  
NASHVILLE, TN



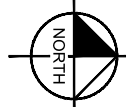
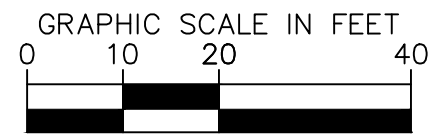
DESIGNED BY:	DJG
DRAWN BY:	TWR
CHECKED BY:	NDOT
DATE:	12/12/2023
KIMLEY-HORN PROJECT NO. 11890036	

**CONCEPT**  
SHEET NUMBER  
**02**

This document, together with the concepts and designs presented herein, is intended only for the specific purpose and client for which it was prepared. Reliance on this document without written authorization and adaptation by Kimley-Horn and Associates, Inc. shall be without liability to Kimley-Horn and Associates, Inc.



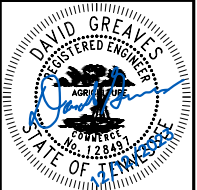
**NOTE: ALL PAVEMENT MARKINGS  
CONFLICTING WITH PROPOSED  
DESIGN SHALL BE REMOVED**



AERIAL IMAGERY SOURCE: NEARMAP



CROSS CREEK ROAD  
TRAFFIC CALMING  
NASHVILLE, TN

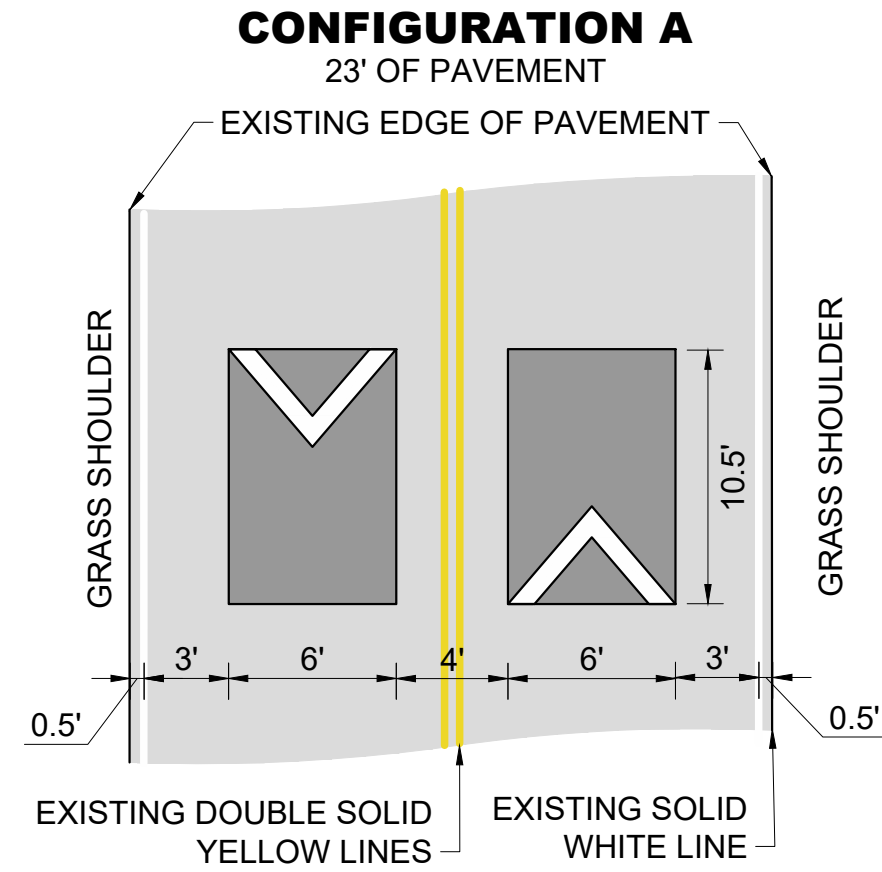


DESIGNED BY:	DJG
DRAWN BY:	TWR
CHECKED BY:	NDOT
DATE:	12/12/2023
KIMLEY-HORN PROJECT NO. 11890036	

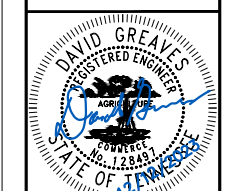
**CONCEPT**

SHEET NUMBER  
**03**

This document, together with the concepts and designs presented herein, is intended only for the specific purpose and client for which it was prepared. Reuse of and improper reliance on this document without written authorization and adaptation by Kimley-Horn and Associates, Inc. shall be without liability to Kimley-Horn and Associates, Inc.



CROSS CREEK ROAD  
TRAFFIC CALMING  
NASHVILLE, TN



DESIGNED BY: DJG  
DRAWN BY: TWR  
CHECKED BY: NDOT  
DATE: 12/12/2023  
KIMLEY-HORN PROJECT NO. 118500036

**DETAIL**

SHEET NUMBER  
**04**