

ESTIMATED QUANTITIES

SPEED CUSHIONS

6' X 10.5' SPEED CUSHION WITH ONE ARROW	18
---	----

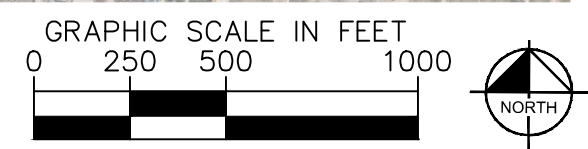
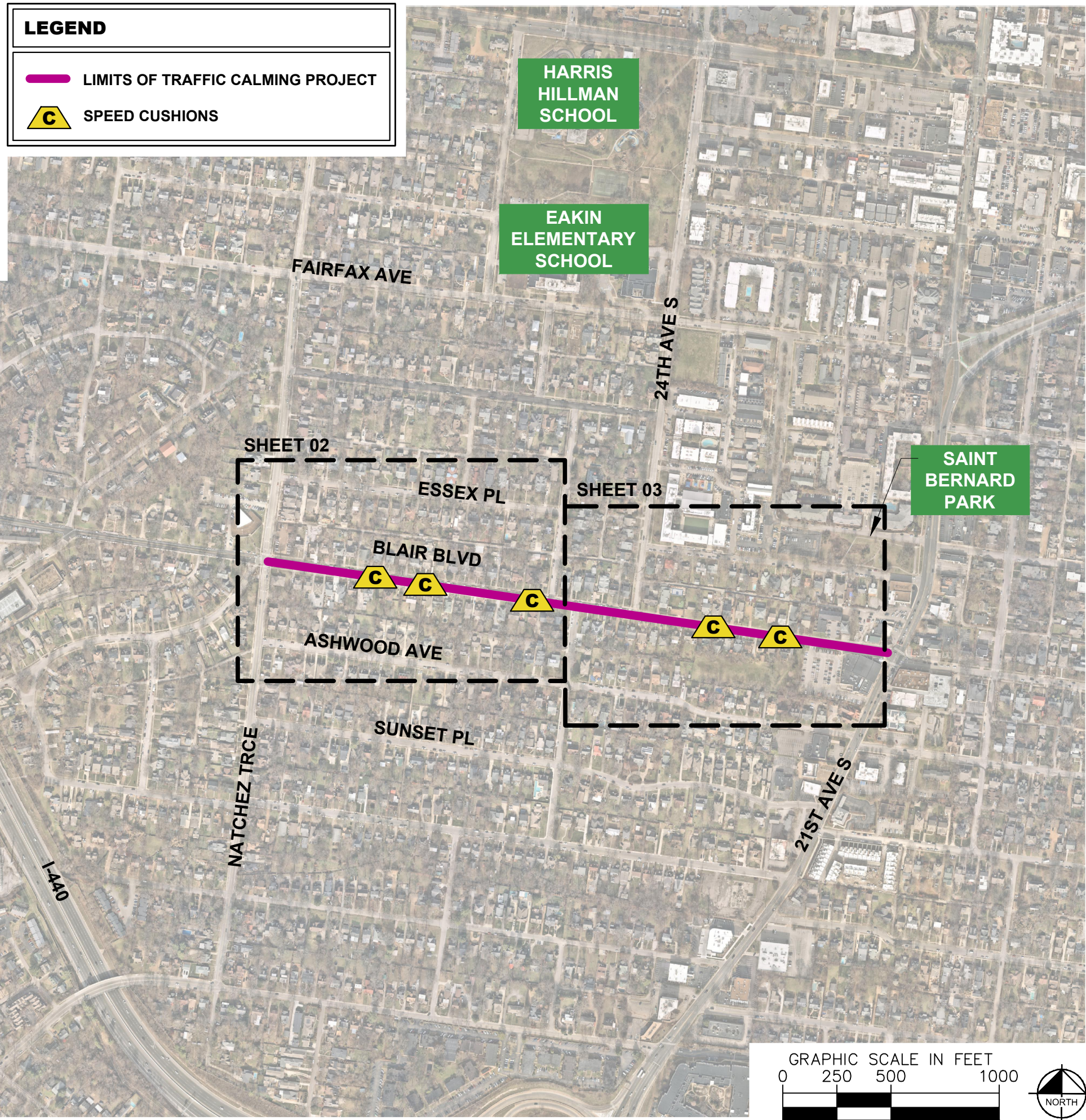
SIGNING

W17-1 (VAR.) "SPEED CUSHIONS AHEAD" SIGN (30" X 30")	4
W13-1P "20 M.P.H" SIGN (18" X 18")	4

NOTE: ALL LOCATIONS ARE REFERENCED FROM CENTERLINE OF DRIVEWAYS OR OTHER LANDMARKS TO THE CENTER OF SPEED CUSHIONS OR SIGNS.

LEGEND

-  LIMITS OF TRAFFIC CALMING PROJECT
-  SPEED CUSHIONS



This document, together with the concepts and designs presented herein, is intended only for the specific purpose and client for which it was prepared. Reuse of and improper reliance on this document without written authorization and adaptation by Kimley-Horn and Associates, Inc. shall be without liability to Kimley-Horn and Associates, Inc.

SPEED CUSHIONS



SPEED CUSHION CONFIGURATION A
10' EAST OF BRICK WALKWAY
AT 2531 BLAIR BLVD

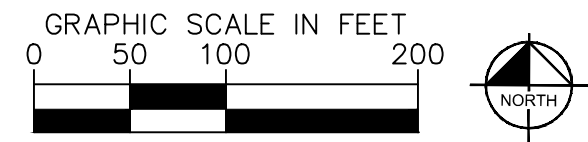
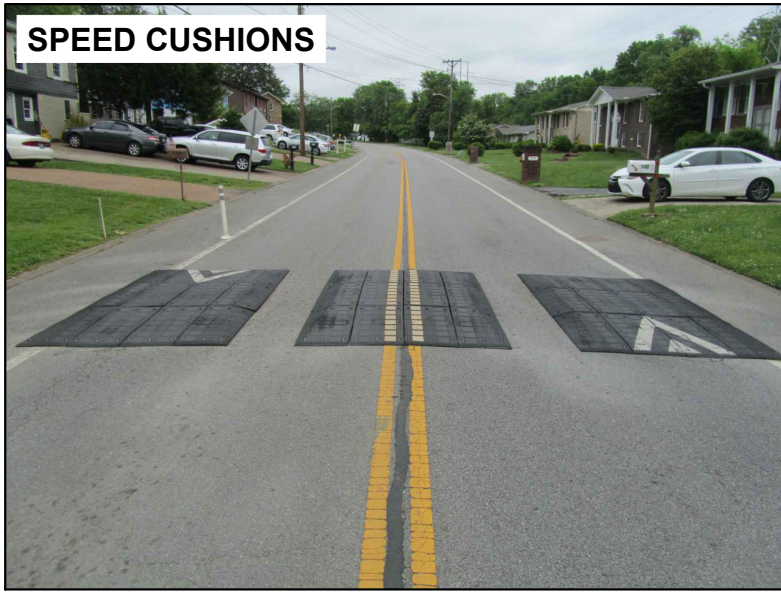
SPEED CUSHION CONFIGURATION A
EVEN WITH STONE WALKWAY
AT 2525 BLAIR BLVD

SPEED CUSHION CONFIGURATION A
38' WEST OF FRONT STEPS
AT 2500 BLAIR BLVD



This document, together with the concepts and designs presented herein, is intended only for the specific purpose and client for which it was prepared. Reuse of and improper reliance on this document without written authorization and adaptation by Kimley-Horn and Associates, Inc. shall be without liability to Kimley-Horn and Associates, Inc.

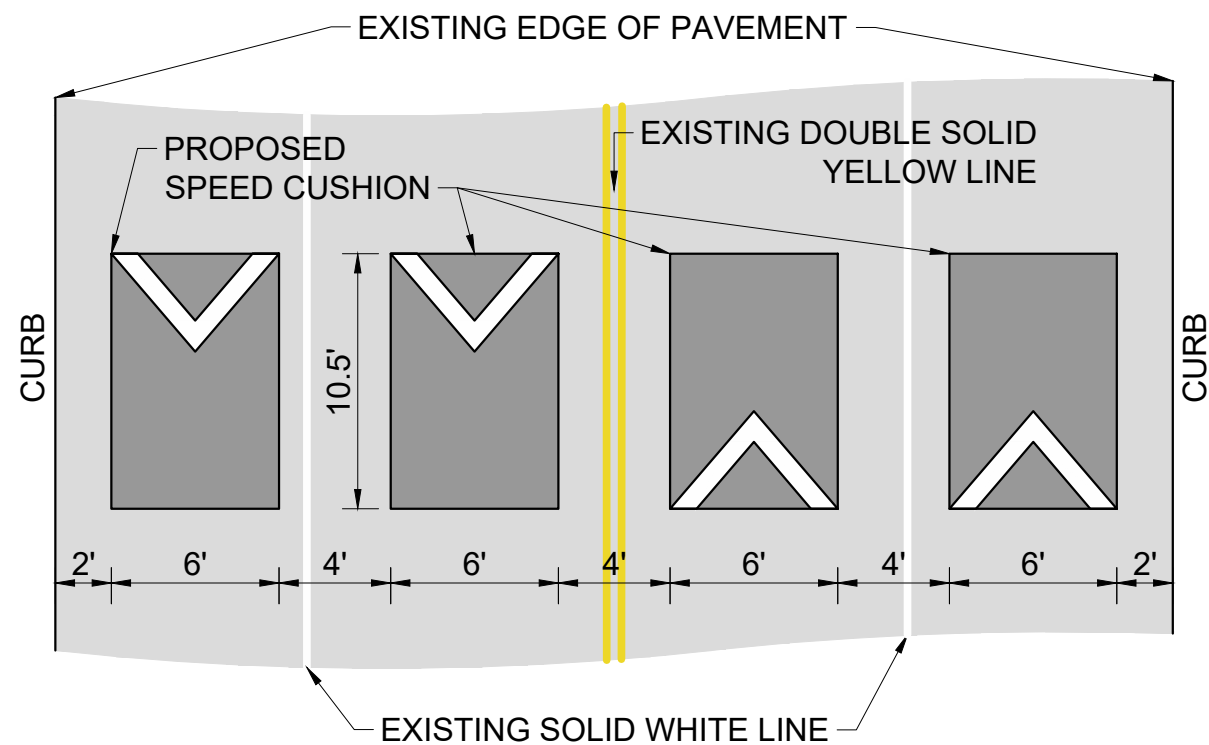
SPEED CUSHIONS



This document, together with the concepts and designs presented herein, as an instrument of service, is intended only for the specific purpose and client for which it was prepared. Reuse or improper reliance on this document without written authorization and adaptation by Kimley-Horn and Associates, Inc. shall be without liability to Kimley-Horn and Associates, Inc.

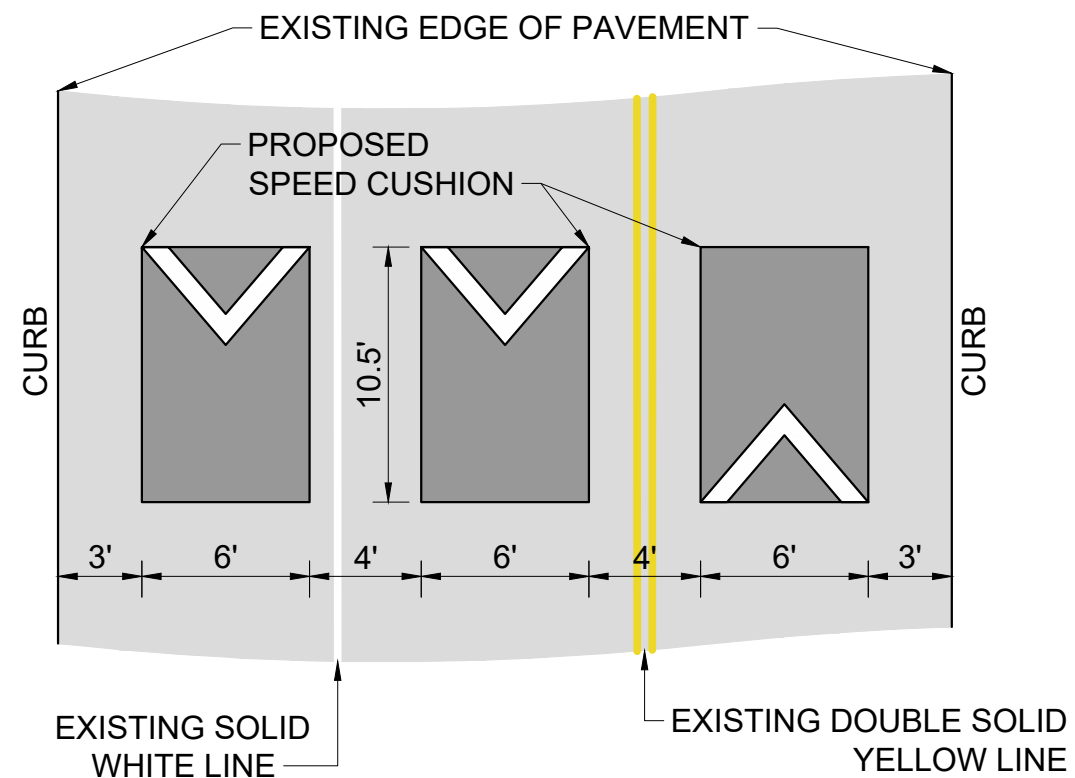
CONFIGURATION A

40' OF PAVEMENT



CONFIGURATION B

32' OF PAVEMENT



NDOT

**BLAIR BOULEVARD
TRAFFIC CALMING**
NASHVILLE, TN

**DRAFT
PRELIMINARY
PLANS**

FOR REVIEW ONLY



DESIGNED BY: JLH
 DRAWN BY: JTL
 CHECKED BY: NDOT
 DATE: 2/29/2024
 KIMLEY-HORN PROJECT NO. 118800046

DETAIL

SHEET NUMBER
04