

### ESTIMATED QUANTITIES

#### SPEED CUSHIONS

6' X 10.5' SPEED CUSHION WITH ONE ARROW	12
---	----

6' X 10.5' SPEED CUSHION WITH DSYL	3
------------------------------------	---

#### SIGNING

W17-1 (VAR.) "SPEED CUSHION" SIGN (30" X 30")	12
---	----

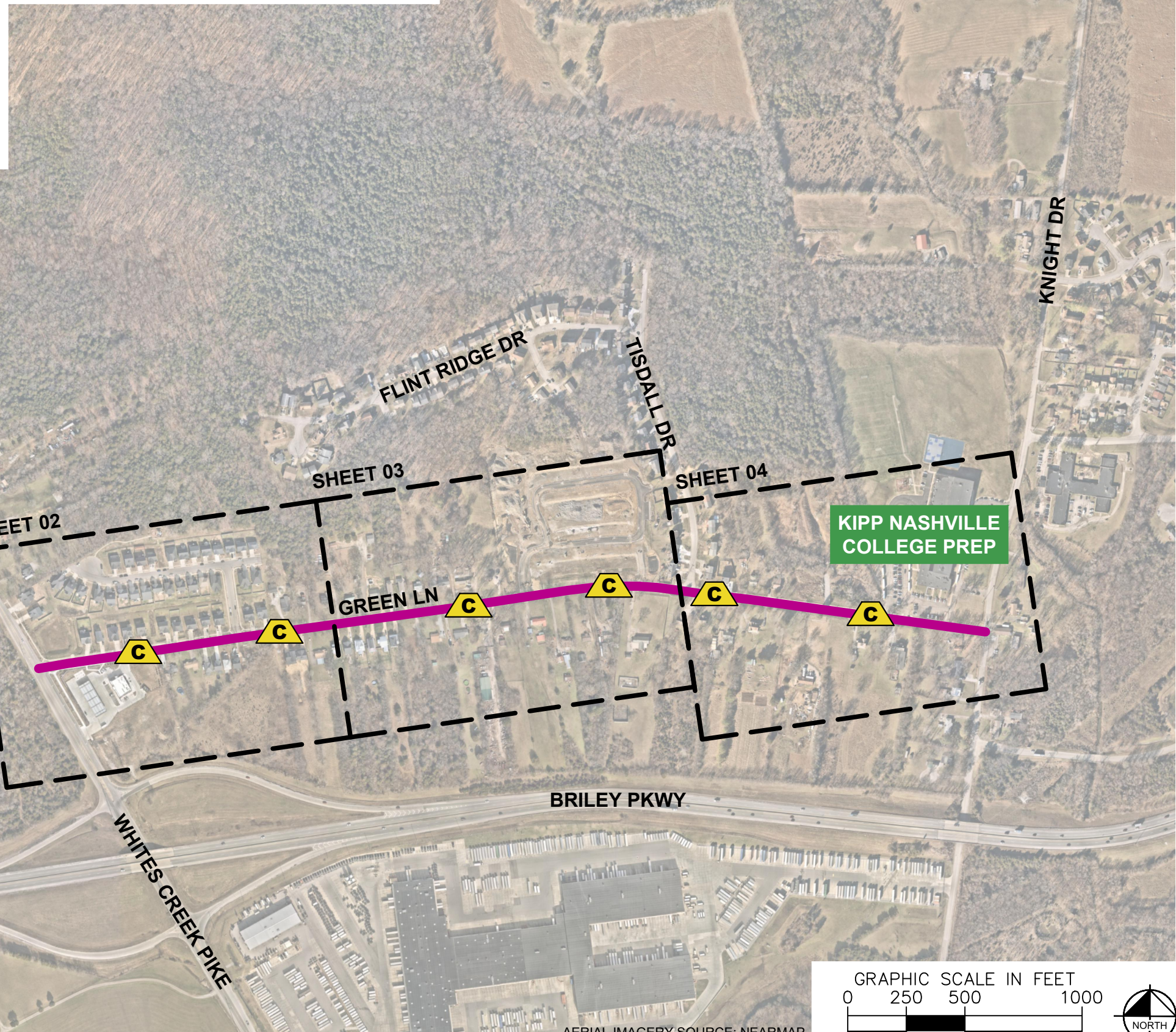
W13-1P "20 M.P.H" SIGN (18" X 18")	12
------------------------------------	----

**NOTE:** ALL LOCATIONS ARE REFERENCED FROM CENTERLINE OF DRIVEWAYS OR OTHER LANDMARKS TO THE CENTER OF SPEED CUSHIONS OR SIGNS.

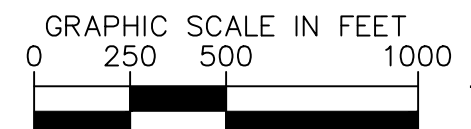
### LEGEND

 LIMITS OF TRAFFIC CALMING PROJECT

 SPEED CUSHIONS

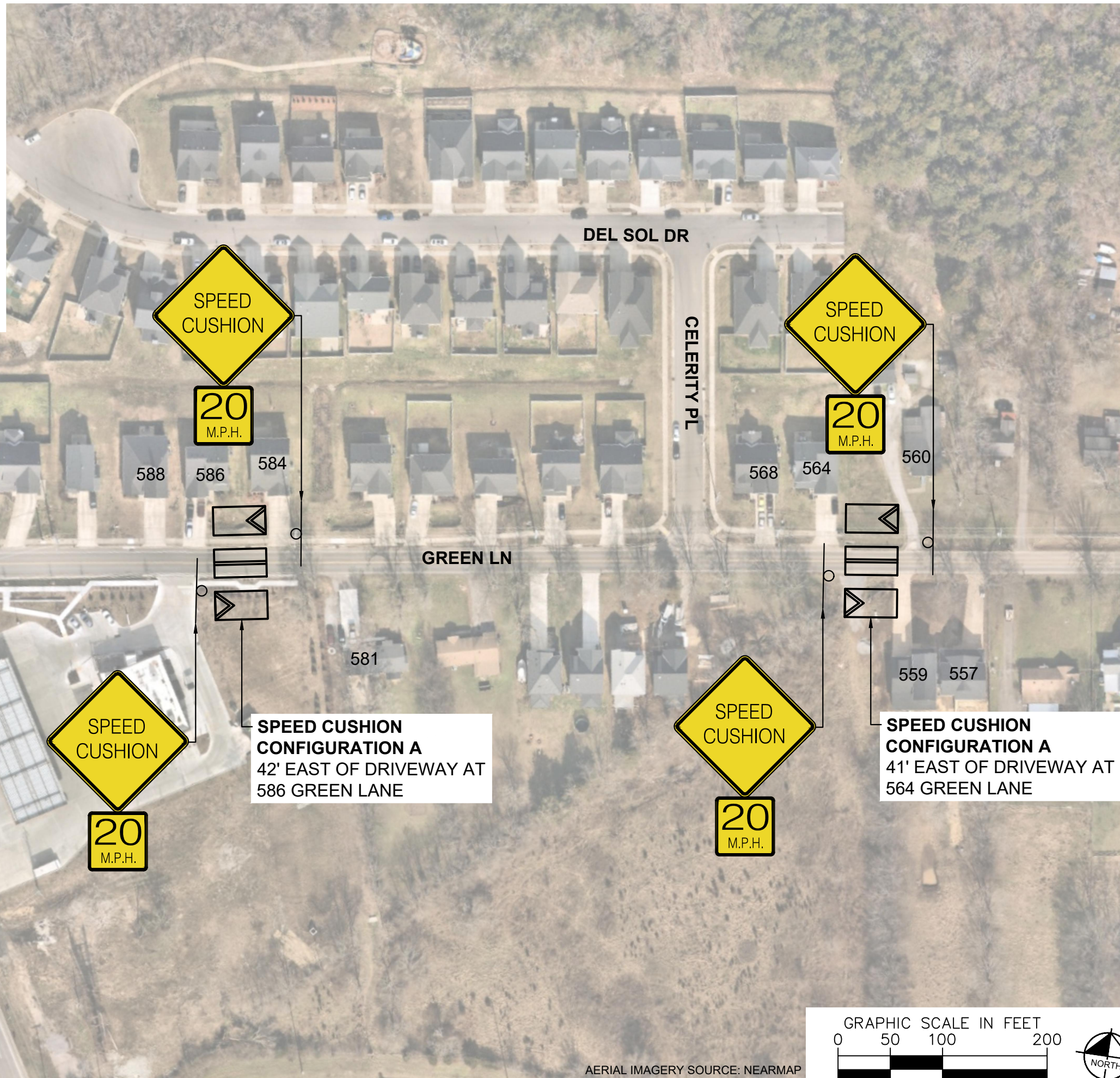


**KIPP NASHVILLE  
COLLEGE PREP**

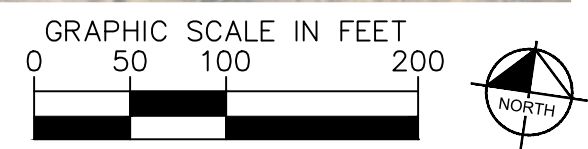
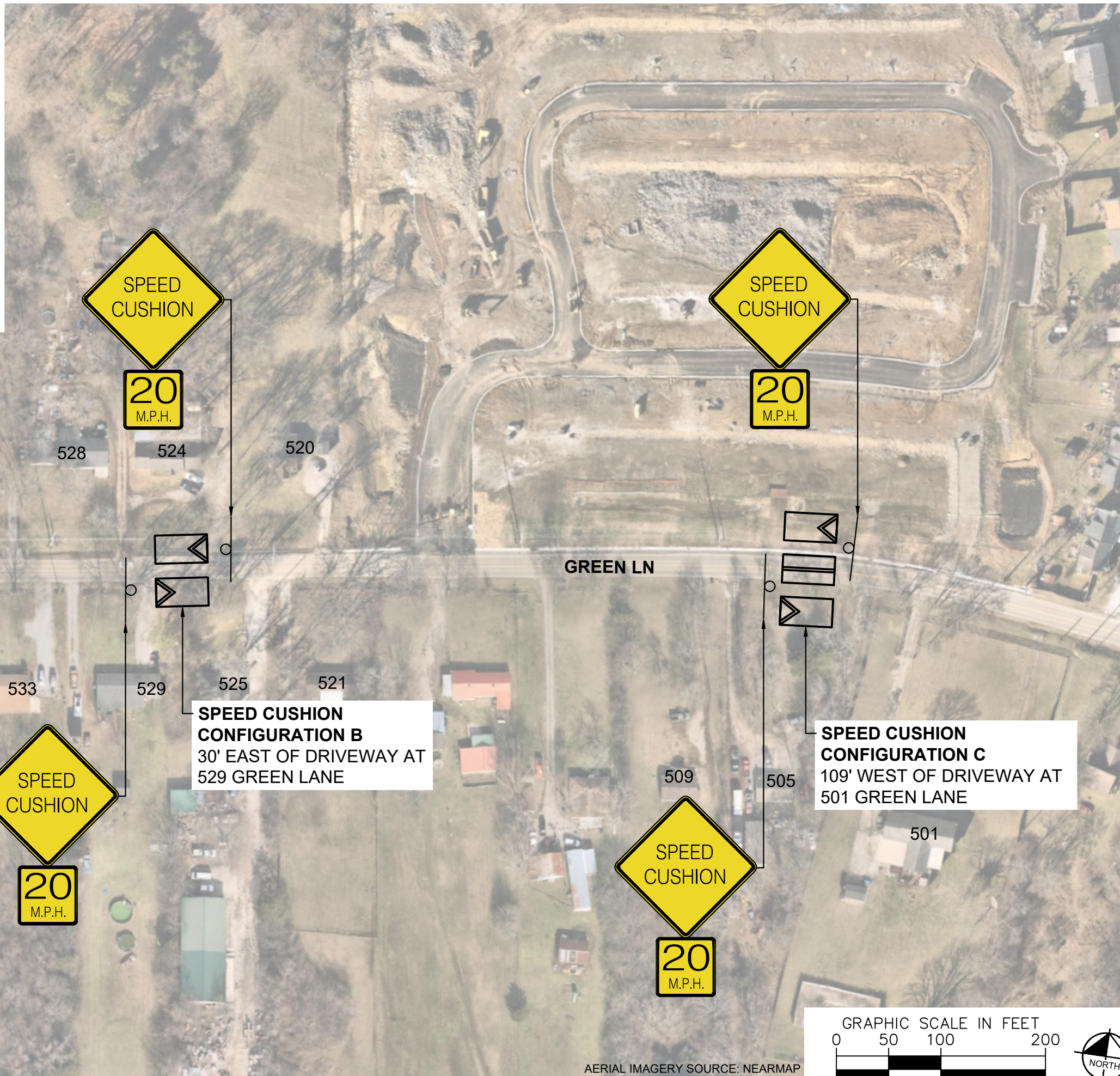


AERIAL IMAGERY SOURCE: NEARMAP

**SPEED CUSHIONS**



**SPEED CUSHIONS**



AERIAL IMAGERY SOURCE: NEARMAP

This document, together with the concepts and designs presented herein, is intended only for the specific purpose and client for which it was prepared. Reuse of and improper reliance on this document without written authorization and adaptation by Kimley-Horn and Associates, Inc. shall be without liability to Kimley-Horn and Associates, Inc.



**SPEED CUSHION CONFIGURATION D**  
60' WEST OF DRIVEWAY AT  
442 GREEN LANE



**SPEED CUSHION CONFIGURATION D**  
48' EAST OF DRIVEWAY AT  
419 GREEN LANE



**NDOT**

**GREEN LANE**  
TRAFFIC CALMING  
NASHVILLE, TN

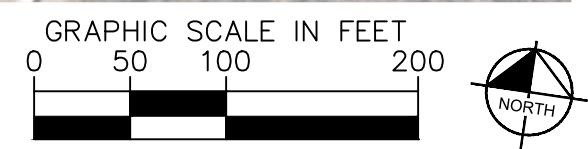
**DRAFT**  
PRELIMINARY  
PLANS  
FOR REVIEW ONLY



DESIGNED BY:	JLH
DRAWN BY:	JCB
CHECKED BY:	NDOT
DATE:	6/6/2024
KIMLEY-HORN PROJECT NO.:	118900046

**CONCEPT**

SHEET NUMBER  
**04**

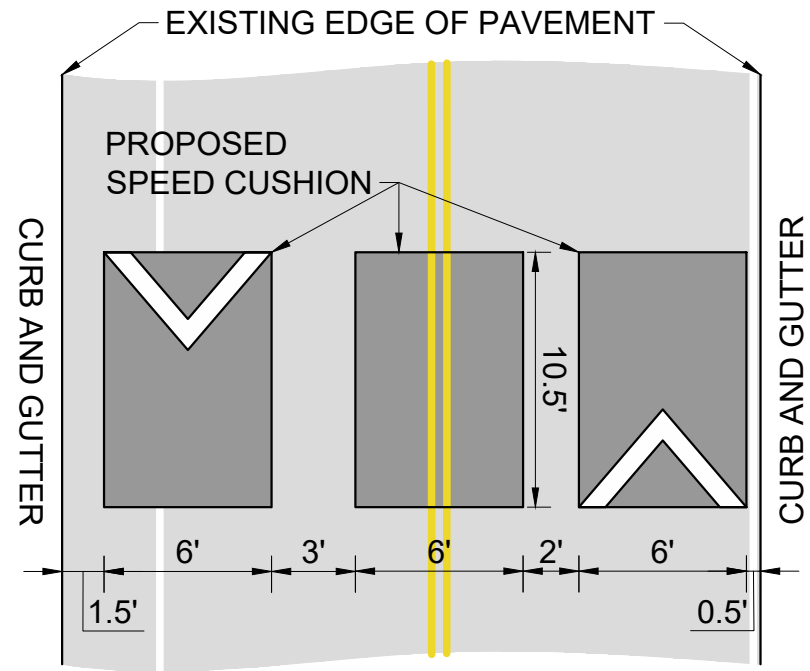


AERIAL IMAGERY SOURCE: NEARMAP

This document, together with the concepts and designs presented herein, as an instrument of service, is intended only for the specific purpose and client for which it was prepared. Reuse of and improper reliance on this document without written authorization and adaptation by Kimley-Horn and Associates, Inc. shall be without liability to Kimley-Horn and Associates, Inc.

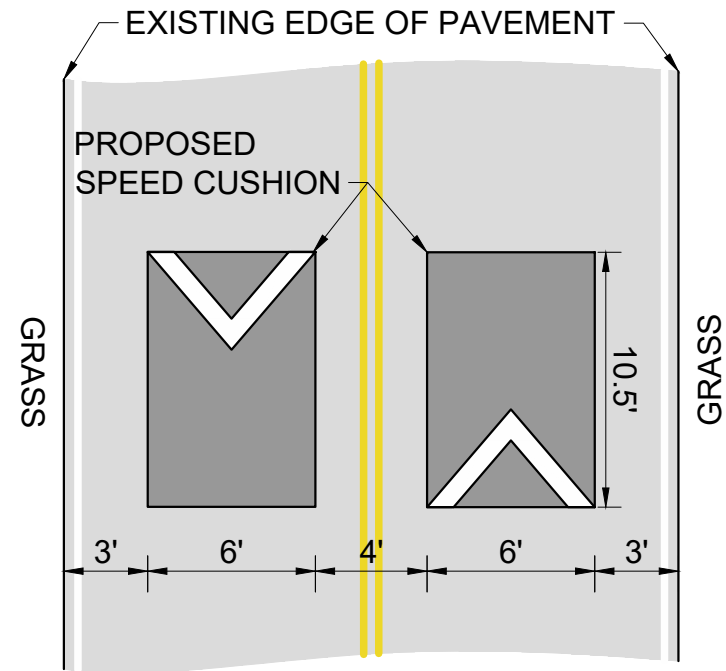
### CONFIGURATION A

25' OF PAVEMENT



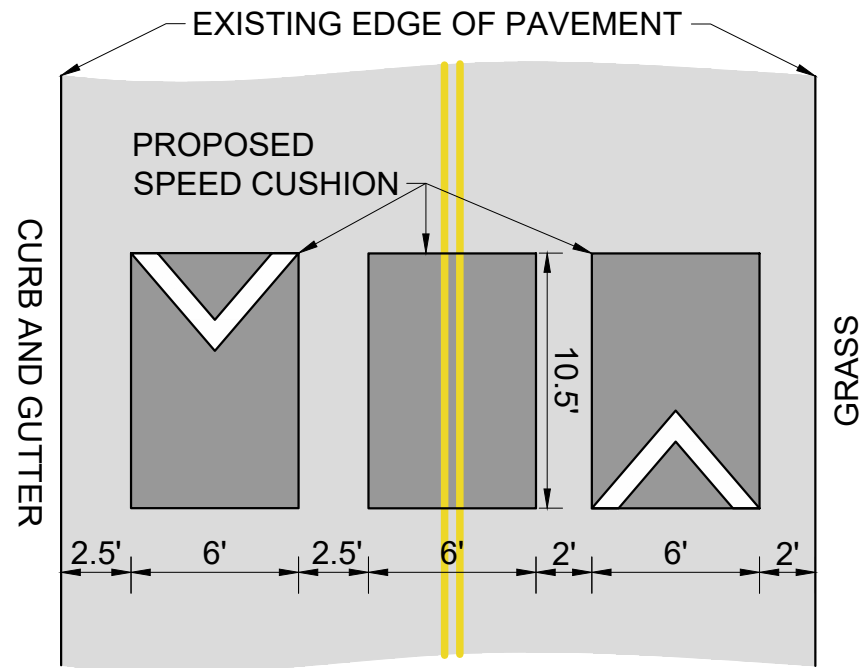
### CONFIGURATION B

22' OF PAVEMENT



### CONFIGURATION C

27' OF PAVEMENT



### CONFIGURATION D

22' OF PAVEMENT

