

ESTIMATED QUANTITIES

SPEED CUSHIONS

6' X 10.5' SPEED CUSHION WITH ONE ARROW	16
---	----

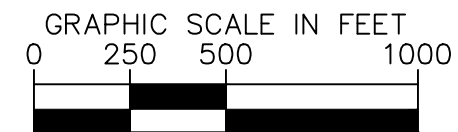
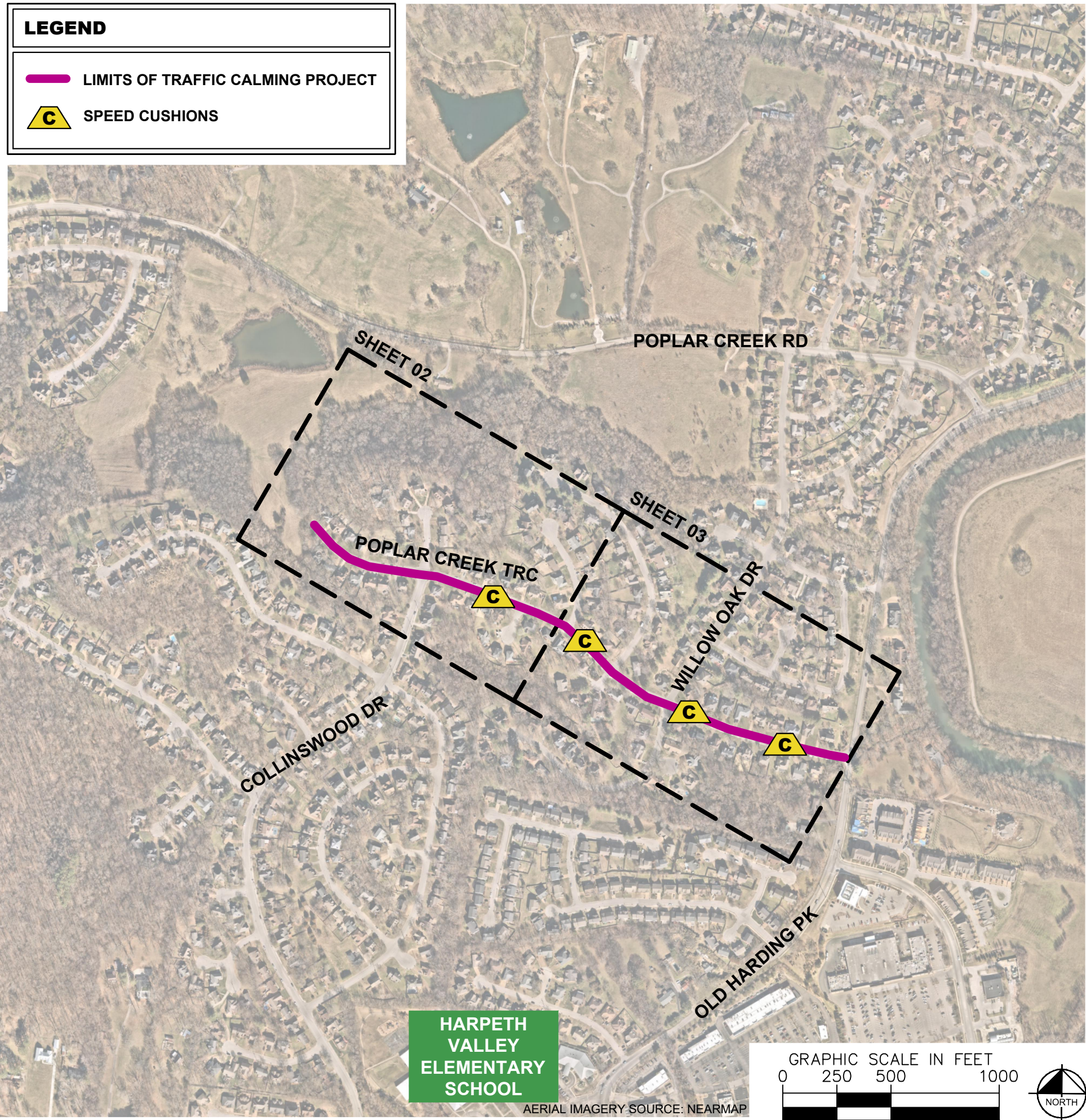
SIGNING

W17-1 (VAR.) "SPEED CUSHION" SIGN (30" X 30")	8
W13-1P "20 M.P.H" SIGN (18" X 18")	8
24" WHITE STOP LINE (LF)	20

NOTE: ALL LOCATIONS ARE REFERENCED FROM CENTERLINE OF DRIVEWAYS OR OTHER LANDMARKS TO THE CENTER OF SPEED CUSHIONS OR SIGNS.

LEGEND

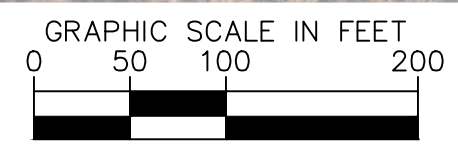
-  LIMITS OF TRAFFIC CALMING PROJECT
-  SPEED CUSHIONS



AERIAL IMAGERY SOURCE: NEARMAP

This document, together with the concepts and designs presented herein, is intended only for the specific purpose and client for which it was prepared. Reuse of and improper reliance on this document without written authorization and adaptation by Kimley-Horn and Associates, Inc. shall be without liability to Kimley-Horn and Associates, Inc.

SPEED CUSHIONS



AERIAL IMAGERY SOURCE: NEARMAP

This document, together with the concepts and designs presented herein, is intended only for the specific purpose and client for which it was prepared. Reuse of and improper reliance on this document without written authorization and adaptation by Kimley-Horn and Associates, Inc. shall be without liability to Kimley-Horn and Associates, Inc.



POPLAR CREEK TRACE
TRAFFIC CALMING
NASHVILLE, TN

DRAFT
PRELIMINARY
PLANS
FOR REVIEW ONLY



DESIGNED BY: JLH
DRAWN BY: JCB
CHECKED BY: NDOT
DATE: 6/10/2024
KIMLEY-HORN PROJECT NO. 118900046

CONCEPT
SHEET NUMBER
02

SPEED CUSHIONS

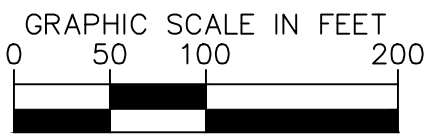


**ROADWAY IMPROVEMENT
INSTALL STOP BAR 20'**

**SPEED CUSHION
CONFIGURATION A
36' WEST OF DRIVEWAY AT
7112 POPLAR CREEK TRACE**

**SPEED CUSHION
CONFIGURATION A
45' WEST OF DRIVEWAY AT
7028 POPLAR CREEK TRACE**

**SPEED CUSHION
CONFIGURATION A
46' WEST OF DRIVEWAY AT
7008 POPLAR CREEK TRACE**



AERIAL IMAGERY SOURCE: NEARMAP

NDOT

**POPLAR CREEK TRACE
TRAFFIC CALMING**
NASHVILLE, TN

**DRAFT
PRELIMINARY
PLANS**
FOR REVIEW ONLY



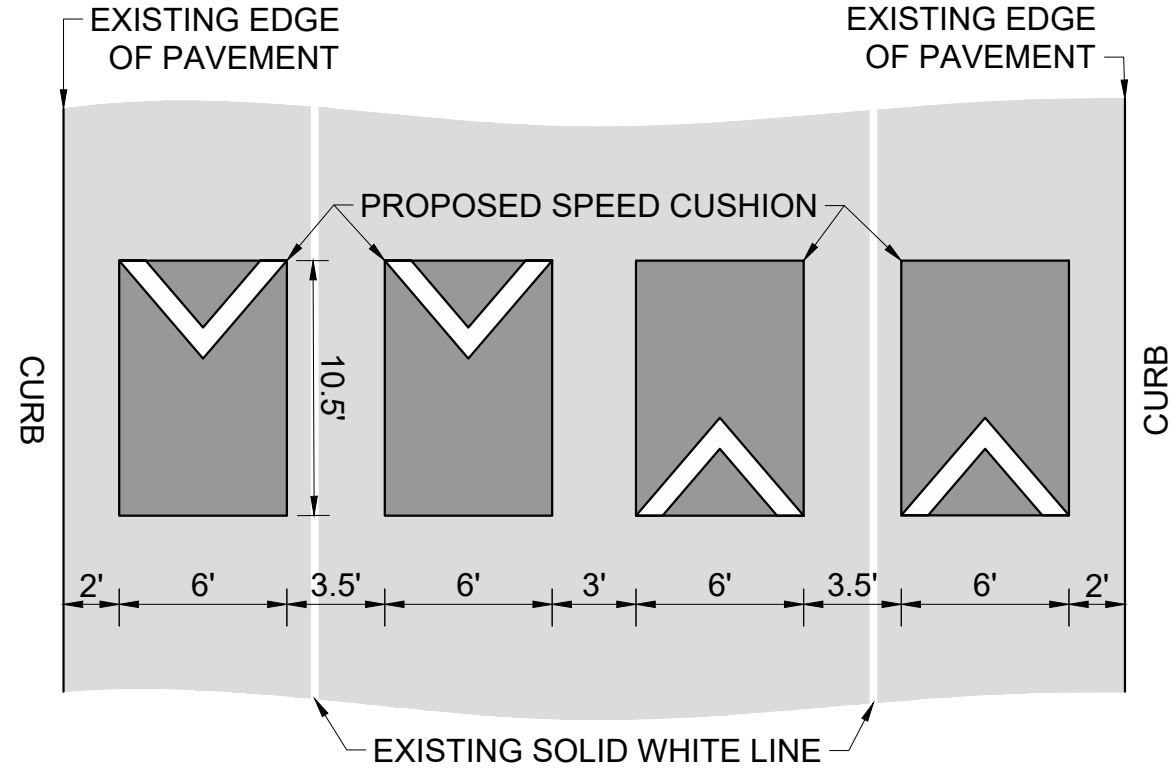
DESIGNED BY:	JLH
DRAWN BY:	JCB
CHECKED BY:	NDOT
DATE:	8/19/2024
KIMLEY-HORN PROJECT NO.:	118900046

CONCEPT
SHEET NUMBER
03

This document, together with the concepts and designs presented herein, is intended only for the specific purpose and client for which it was prepared. Reuse of and improper reliance on this document without written authorization and adaptation by Kimley-Horn and Associates, Inc. shall be without liability to Kimley-Horn and Associates, Inc.

CONFIGURATION B

38' OF PAVEMENT



POPLAR CREEK TRACE
TRAFFIC CALMING
NASHVILLE, TN

DRAFT
PRELIMINARY
PLANS
FOR REVIEW ONLY
6/10/2024



DESIGNED BY:	JLH
DRAWN BY:	JCB
CHECKED BY:	NDOT
DATE:	6/10/2024
KIMLEY-HORN PROJECT NO.:	118800046

DETAIL

SHEET NUMBER
04