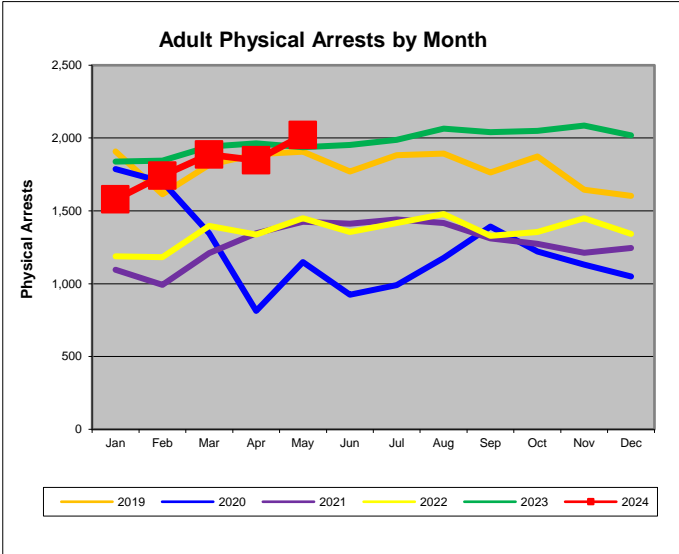
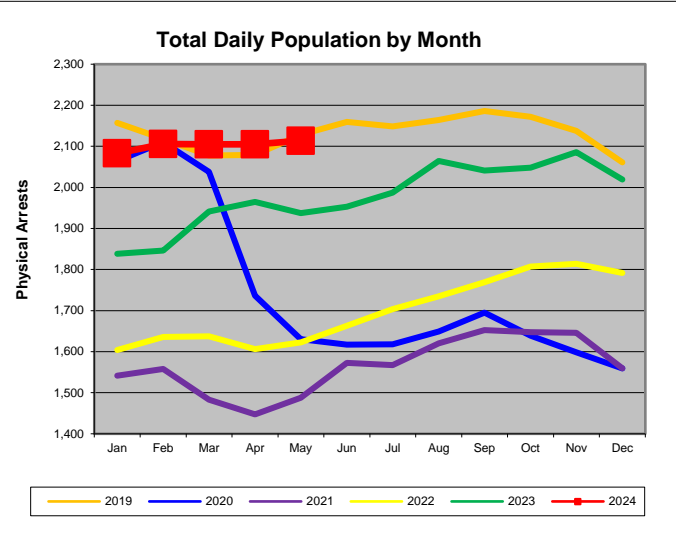


AVERAGE DAILY POPULATION REPORT Davidson County Correctional Facilities

Overview of May 2024	
1.	The ADP in May 2024 was 2,114 which was 0.4% higher than the previous month. The ADP was 9.1% higher than in May 2023, when the population was 1,937.
2.	The ADP for Pretrial Felons was 1,016 which was 0.2% higher than the previous month, and was 9.9% higher than the ADP of 924 in May 2023.
3.	The ADP for Pretrial Misdemeanants was 139, which was 9.6% higher than the previous month, and was 0.2% (rounded) higher than the ADP of 139 in May 2023.
4.	In May 2024 the ADP for Convicted Misdemeanants & DUIs (CM+DUI) was 140. That was 3.0% higher than the previous month, and was 21.9% higher than the ADP of 115 in May 2023.
5.	The average daily male population increased to 1,890 (+0.2%) in May 2024, while the female daily population was 224, a 2.0% increase above the previous month.
6.	The ADP for Locally Sentenced Felons (LSF) was 439 in May 2024. That was 1.6% lower than the previous month, but was 12.1% higher than May 2023 when it was 391.
7.	State Sentenced Felons (TDOC) had an ADP of 183 in May 2024. That was 4.2% higher than the previous month, and was 93.5% higher than May 2023 when the ADP was 94.
8.	LSF inmates were 20.8% of the ADP, while Pretrial Felons (PTF) made up 48.1% of the ADP in May 2024.
9.	All of the Davidson County correctional facilities were below certified capacity during May 2024. However, CDM averaged 99.8% of capacity during the month. The ADP of 2,114 for all facilities was 89.9% of the total system capacity of 2,350 beds.
10.	MDF was closed on 12/7/2020. Since then it has been used occasionally to temporarily house inmates. The capacity for DCSO facilities (minus MDF) in May 2024 was 89.9% (same as above).
11.	There were 2,020 adult physical arrests made in May 2024. That was 9.3% more than the previous month, and was 28.0% more than the arrests made in May 2023.



Disclaimer: All reports and other documents generated by Criminal Justice Planning are based on information drawn from databases owned and maintained by other agencies of state and local government. Therefore, Criminal Justice Planning can not guarantee, or assume responsibility for, the accuracy or completeness of the data or information reflected in any reports or other documents.

Average Daily Population Summary by Classification

Month 2024	Total ADP			Total ADP by Gender					
	Total	Monthly Change	Change Since Jan	Male	Monthly Change	Change Since Jan	Female	Monthly Change	Change Since Jan
Jan	2,083	3.2%		1,865	2.9%		218	5.3%	
Feb	2,106	1.1%	1.1%	1,872	0.4%	0.4%	234	7.2%	7.2%
Mar	2,105	0.0%	1.1%	1,882	0.5%	0.9%	222	-4.7%	2.1%
Apr	2,105	0.0%	1.1%	1,885	0.2%	1.1%	220	-1.3%	0.8%
May	2,114	0.4%	1.5%	1,890	0.2%	1.3%	224	2.0%	2.8%
Jun									
Jul									
Aug									
Sep									
Oct									
Nov									
Dec									
AVG	2,102	0.9%		1,879	0.8%		224	1.7%	

Month 2024	PTF	Monthly Change	Change Since Jan	PTM	Monthly Change	Change Since Jan	CM+DUI	Monthly Change	Change Since Jan
Jan	1,013	3.90%		138	19.7%		127	-1.5%	
Feb	1,031	1.8%	1.8%	134	-3.3%	-3.3%	133	4.2%	4.2%
Mar	1,011	-1.9%	-0.2%	141	5.4%	1.9%	140	5.2%	9.6%
Apr	1,014	0.3%	0.0%	127	-9.8%	-8.1%	136	-2.6%	6.8%
May	1,016	0.2%	0.3%	139	9.6%	0.7%	140	3.0%	10.0%
Jun									
Jul									
Aug									
Sep									
Oct									
Nov									
Dec									
AVG	1,017	0.84%		136	4.3%		135	1.7%	

ADP	Average Daily Population
PTF	Pretrial Felons
PTM	Pretrial Misdemeanants
CM+DUI	Convicted Misdemeanants including DUI's

Notes:

*Classification and gender subtotals may not sum to the monthly total due to rounding.

Source: DCSO Penjail data representing the 11:00 pm facility count.

Average Daily Population Summary by Classification

Month 2024	LSF	Monthly Change	Change Since Jan	PVF	Monthly Change	Change Since Jan
Jan	438	-2.3%		160	6.4%	
Feb	439	0.3%	0.3%	159	0.0%	0.0%
Mar	448	2.0%	2.3%	154	-3.5%	-3.5%
Apr	446	-0.5%	1.9%	162	5.5%	1.8%
May	439	-1.6%	0.3%	154	-5.3%	-3.5%
Jun						
Jul						
Aug						
Sep						
Oct						
Nov						
Dec						
AVG	442	-0.4%		158	0.6%	

Month 2024	PVM	Monthly Change	Change Since Jan	OTHER (a)	Monthly Change	Change Since Jan	TDOC (b)	Monthly Change	Change Since Jan
Jan	27	10.5%		16	-38.5%		164	8.8%	
Feb	32	18.3%	18.3%	17	9.5%	9.5%	160	-2.2%	-2.2%
Mar	31	-2.4%	15.5%	17	-2.6%	6.7%	163	1.9%	-0.4%
Apr	31	0.2%	15.7%	13	-22.2%	-17.0%	175	7.4%	7.0%
May	34	7.7%	24.6%	9	-29.1%	-41.1%	183	4.2%	11.5%
Jun									
Jul									
Aug									
Sep									
Oct									
Nov									
Dec									
AVG	31	6.9%		15	-16.6%		169	4.0%	

LSF	Locally Sentenced Felons
PVF	Probation Violators, Felony
PVM	Probation Violators, Misdemeanor
TDOC	State Sentenced Felons
OTHER	All other classifications including Federal

Notes:

*Classification and gender subtotals may not sum to the monthly total due to rounding.

(a) Other classifications include the following charge classes: CIVCON, FED (including ICE Detainer or Custody holds), GOVERNOR, NONE, NULL.

(b) TDOC classifications include: SPARVIO, STATESPL, STATE. They are State sentenced felons waiting transfer to TN Dept of Correction, State/split felons serving a split sentence of State confinement and probation, and State parole violators.

Source: DCSO Penjail data representing the 11:00 pm facility count.

**Percent of Population by Classification
Including LSF Inmates**

THESE TABLES INCLUDE LOCALLY SENTENCED FELONS

Month 2024	ADP	PTF	PTM	CM/DUI	LSF	PVF	PVM	OTHER (a)	TDOC (b)
Jan	2,083	48.6%	6.6%	6.1%	21.0%	7.7%	1.3%	0.8%	7.9%
Feb	2,106	49.0%	6.4%	6.3%	20.9%	7.6%	1.5%	0.8%	7.6%
Mar	2,105	48.0%	6.7%	6.6%	21.3%	7.3%	1.5%	0.8%	7.8%
Apr	2,105	48.2%	6.0%	6.5%	21.2%	7.7%	1.5%	0.6%	8.3%
May	2,114	48.1%	6.6%	6.6%	20.8%	7.3%	1.6%	0.4%	8.6%
Jun									
Jul									
Aug									
Sep									
Oct									
Nov									
Dec									
AVG	2,102	48.4%	6.5%	6.4%	21.0%	7.5%	1.5%	0.7%	8.0%

Month 2024	ADP	Percent Change	
		Monthly	Since Jan
Jan	2,083	0.0%	
Feb	2,106	1.1%	1.1%
Mar	2,105	0.0%	1.1%
Apr	2,105	0.0%	1.1%
May	2,114	0.4%	1.5%
Jun			
Jul			
Aug			
Sep			
Oct			
Nov			
Dec			

Notes:

(a) Other classifications include the following charge classes: CIVCON, FED (including ICE Detainer or Custody holds), GOVERNOR, NONE, NULL. Detainer or Custody Holds).

(b) TDOC classifications include: SPARVIO, STATESPL, STATE. They are State sentenced felons waiting transfer to TN Dept of Correction, State/split felons serving a split sentence of State confinement and probation, and State parole violators.

Source: DCSO Penjail data representing the 11:00 pm facility count.

Percent of Population by Classification
Excluding LSF Inmates

THESE TABLES EXCLUDE LOCALLY SENTENCED FELONS

Month 2024	ADP	PTF	PTM	CM/DUI	PVF	PVM	OTHER (a)	TDOC (b)
Jan	1,645	61.6%	8.4%	7.7%	9.7%	1.6%	1.0%	10.0%
Feb	1,667	61.9%	8.0%	8.0%	9.6%	1.9%	1.0%	9.6%
Mar	1,657	61.0%	8.5%	8.4%	9.3%	1.9%	1.0%	9.9%
Apr	1,659	61.1%	7.7%	8.2%	9.8%	1.9%	0.8%	10.6%
May	1,675	60.6%	8.3%	8.4%	9.2%	2.0%	0.6%	10.9%
Jun								
Jul								
Aug								
Sep								
Oct								
Nov								
Dec								
AVG	1,661	61.2%	8.2%	8.1%	9.5%	1.9%	0.9%	10.2%

Month 2024	ADP	Percent Change	
		Monthly	Since Jan
Jan	1,645	3.7%	
Feb	1,667	1.3%	1.3%
Mar	1,657	-0.6%	0.7%
Apr	1,659	0.1%	0.9%
May	1,675	1.0%	1.8%
Jun			
Jul			
Aug			
Sep			
Oct			
Nov			
Dec			

Notes:

(a) Other classifications include the following charge classes: CIVCON, FED (including ICE Detainer or Custody holds), GOVERNOR, NONE, NULL. Detainer or Custody Holds).

(b) TDOC classifications include: SPARVIO, STATESPL, STATE. They are State sentenced felons waiting transfer to TN Dept of Correction, State/split felons serving a split sentence of State confinement and probation, and State parole violators.

Source: DCSO Penjail data representing the 11:00 pm facility count.

Percent Change in the Average Daily Population from Current Year to Previous Year

Month	ADP			PTF			PTM		
	2023	2024	% Change	2023	2024	% Change	2023	2024	% Change
Jan	1,838	2,083	13.3%	917	1,013	10.5%	116	138	19.0%
Feb	1,846	2,106	14.1%	900	1,031	14.5%	109	134	22.8%
Mar	1,941	2,105	8.4%	922	1,011	9.6%	133	141	6.0%
Apr	1,965	2,105	7.1%	940	1,014	7.8%	139	127	-8.6%
May	1,937	2,114	9.1%	924	1,016	9.9%	139	139	0.2%
Jun	1,953			939			133		
Jul	1,987			958			140		
Aug	2,064			996			140		
Sep	2,041			969			134		
Oct	2,048			980			126		
Nov	2,086			1,010			122		
Dec	2,019			975			116		
Avg	1,977	2,102	10.4%	953	1,017	10.5%	129	136	7.9%
% Change Curr Yr to Prev Yr			6.3%			6.7%			5.4%

Month	CM+DUI			LSF			PVF		
	2023	2024	% Change	2023	2024	% Change	2023	2024	% Change
Jan	119	127	7.3%	378	438	15.9%	120	160	32.6%
Feb	113	133	17.3%	389	439	12.9%	143	159	11.8%
Mar	111	140	25.6%	394	448	13.5%	153	154	0.8%
Apr	111	136	22.4%	393	446	13.5%	158	162	2.9%
May	115	140	21.9%	391	439	12.1%	149	154	3.3%
Jun	123			388			161		
Jul	132			393			162		
Aug	140			391			181		
Sep	141			417			157		
Oct	144			432			140		
Nov	143			441			144		
Dec	129			448			150		
Avg	127	135	18.9%	405	442	13.6%	151	158	10.3%
% Change Curr Yr to Prev Yr			6.6%			9.2%			4.3%

Month	PVM			Other (a)			TDOC (b)		
	2023	2024	% Change	2023	2024	% Change	2023	2024	% Change
Jan	24	27	12.0%	82	16	-80.6%	82	164	98.9%
Feb	21	32	54.5%	89	17	-80.4%	82	160	95.5%
Mar	26	31	22.8%	103	17	-83.4%	100	163	63.7%
Apr	31	31	2.8%	98	13	-86.6%	95	175	85.4%
May	33	34	3.7%	92	9	-89.7%	94	183	93.5%
Jun	30			75			98		
Jul	27			72			104		
Aug	33			65			118		
Sep	28			62			134		
Oct	22			57			147		
Nov	28			54			144		
Dec	25			26			151		
Avg	27	31	19.1%	73	15	-84.1%	112	169	87.4%
% Change Curr Yr to Prev Yr			15.0%			-80.0%			50.6%

ADP	Average Daily Population		
PTF	Pretrial Felons	PTM	Pretrial Misdemeanants
CM+DUI	Convicted Misdemeanants including DUI's	LSF	Locally Sentenced Felons
PVF	Probation Violators, Felony	PVM	Probation Violators, Misdemeanor
TDOC	State Sentenced Felons		
OTHER	All other classifications including Federal		

Notes:

(a) Other classifications include the following charge classes: CIVCON, FED (including ICE Detainer or Custody holds), GOVERNOR, NONE, NULL. Detainer or Custody Holds).

(b) TDOC classifications include: SPARVIO, STATESPL, STATE. They are State sentenced felons waiting transfer to TN Dept of Correction, State/split felons serving a split sentence of State confinement and probation, and State parole violators.

Source: DCSO Penjail data representing the 11:00 pm facility count.

Average Daily Population By Facility - Detail

2024 Month	DDC - Downtown Detention Center (formerly CJC)			CDM - Correctional Development Center Male			CDF - Correctional Development Center Female			
	Capacity - 762 (a)			Capacity - 768 (f)			Capacity - 252 (as of 12/7/2020) (b)			
	ADP (Includes the Gym and Excludes Processing*)	Percent Change from Previous Month	Average Percent Capacity	ADP	Percent Change from Previous Month	Average Percent Capacity	ADP	Percent Change from Previous Month	Average Percent Capacity	Temporary Covid 19 Males ADP**
Jan	659	13.0%	86.5%	739	23.4%	96.2%	212	25.0%	83.9%	
Feb	657	-0.4%	86.2%	752	1.7%	97.9%	224	6.0%	89.0%	
Mar	662	0.8%	86.8%	756	0.5%	98.4%	217	-3.3%	86.1%	
Apr	663	0.2%	87.0%	753	-0.3%	98.1%	214	-1.1%	85.1%	
May	658	-0.8%	86.4%	767	1.8%	99.8%	218	1.6%	86.4%	
Jun										
Jul										
Aug										
Sep										
Oct										
Nov										
Dec										
YTD AVG	660	2.6%	86.6%	753	5.4%	98.1%	217	5.6%	86.1%	

*Processing includes all inmates in custody who have not been assigned a bed.

**Males who tested positive for COVID19 temporarily housed in CDCF.

2024 Month	HDC - Hill Detention Center			ORC - Offender Re-Entry Center			BCC - Behavioral Care Center				
	Capacity - 0 (as of 5/6/20) (e)			Capacity - 0 (g)			Capacity - 60 (h)				
	ADP	Percent Change from Previous Month	Average Percent Capacity	ADP	Percent Change from Previous Month	Average Percent Capacity	Male ADP	Female ADP	Total ADP	Percent Change from Previous Month	Average Percent Capacity
Jan	0	0.0%		0	0.0%		6	6	13	-25.4%	21.5%
Feb	0	0.0%		0	0.0%		7	9	17	29.3%	27.8%
Mar	0	0.0%		0	0.0%		13	6	18	9.8%	30.5%
Apr	0	0.0%		0	0.0%		13	5	18	-0.9%	30.3%
May	0	0.0%		0	0.0%		11	6	17	-6.4%	28.3%
Jun											
Jul											
Aug											
Sep											
Oct											
Nov											
Dec											
YTD AVG	0	0.0%		0	0.0%		10	7	17	1.3%	27.7%

2024 Month	MCC - Maximum Correctional Center					MDF - Metro Davidson County Detention Facility				
	Capacity - 508 (as of 12/7/2020) (b)					Capacity - 0 (as of 12/7/2020) (c)				
	Male ADP	Female ADP	Total ADP	Percent Change from Previous Month	Average Percent Capacity	Male ADP*	Female ADP	Total ADP	Percent Change from Previous Month	Average Percent Capacity
Jan	460	0	460	8.8%	90.6%	0	0	0	0.0%	0.0%
Feb	457	0	457	-0.8%	89.9%	0	0	0	0.0%	0.0%
Mar	452	0	452	-0.9%	89.0%	0	0	0	0.0%	0.0%
Apr	456	0	456	0.8%	89.8%	0	0	0	0.0%	0.0%
May	454	0	454	-0.4%	89.4%	0	0	0	0.0%	0.0%
Jun										
Jul										
Aug										
Sep										
Oct										
Nov										
Dec										
YTD AVG	456	0	456	1.5%	89.7%	0	0	0	0.0%	0.0%

*Inmates are occasionally temporarily housed in MDF due to issues in other facilities (environmental, quarantine, etc).

*Facility notes are found on page 8.

Average Daily Population By Facility - Summary

		Total All Facilities		
		Capacity - 2,350 (as of 12/7/20) (d)		
2024 Month	ADP	Percent Change from Previous Month	Average Percent Capacity	System Capacity
Jan	2,083	3.1%	88.6%	2,350
Feb	2,106	1.1%	89.6%	2,350
Mar	2,105	0.0%	89.6%	2,350
Apr	2,105	0.0%	89.6%	2,350
May	2,114	0.4%	89.9%	2,350
Jun				2,350
Jul				2,350
Aug				2,350
Sep				2,350
Oct				2,350
Nov				2,350
Dec				2,350
YTD AVG	2,102	0.9%	89.5%	

		Total DCSO Facilities		
		Capacity - 2,350 (as of 12/7/20)		
2024 Month	ADP	Percent Change from Previous Month	Average Percent Capacity	System Capacity
Jan	2,083	3.1%	88.6%	2,350
Feb	2,106	1.1%	89.6%	2,350
Mar	2,105	0.0%	89.6%	2,350
Apr	2,105	0.0%	89.6%	2,350
May	2,114	0.4%	89.9%	2,350
Jun				2,350
Jul				2,350
Aug				2,350
Sep				2,350
Oct				2,350
Nov				2,350
Dec				2,350
YTD AVG	2,102	0.9%	89.5%	

Last Date Facility was Below 100% Capacity*		
Facility	Date	Current Consecutive Days in 2024 Over Capacity
DDC	5/31/24	0
CDM	5/31/24	6
CDF	5/31/24	0
HDC	5/31/24	0
ORC	5/31/24	0
BCC	5/31/24	0
MCC	5/31/24	0
MDF	5/31/24	0
*Between Jan 1 and December 31, 2024.		

Notes:

- (a) Capacity at CJC increased to 807 from 705 in October 2007 through recertification. Capacity decreased to 800 in November 2012 and again to 788 in August 2013. CJC closed for renovation 8/13/16. On 4/16/2020 it began housing inmates and was renamed DDC; new capacity is 762.
- (b) CDF opened in March 2006 when all female inmates were moved there from MDF. In May 2016 all females were moved out of CDF and into MDF; then in August 2016 CDF reopened as MCC (Maximum Correctional Center) and began housing male inmates as a result of renovations at CJC. The capacity at MCC remained at 508. In May 2020, MCC was renamed back to CDF and females were moved from MDF to CDF. Starting 6/25/2020, males testing positive for COVID19 were temporarily housed at CDF. Starting December 2020 due to the temporary closing of MDF, females were housed at CDF (capacity 252), males were housed at MCC (capacity 508).
- (c) Capacity for MDF increased to 1,092 from 892 on 11/1/2005 through recertification. It increased to 1,348 in June 2011. Locally sentenced felon females were moved there in July 2011. In May 2016 all female inmates were moved to MDF because of renovations at CJC. In May 2020, females were moved out of MDF back to CDF. In December 2020, inmates were moved out of MDF into MCC and the facility was temporarily closed by 12/7/2020. Starting Feb 2021, MDF was sometimes used to temporarily house inmates moved from other facilities due to environmental reasons; system capacity remained the same.
- (d) Total capacity for all facilities increased from 3,679 to 3,781 in October 2007; from 3,781 to 3,842 in December 2007; from 3,842 to 4,010 in February 2008, from 4,010 to 4,266 in June 2011. It decreased to 4,259 in November 2012, and again to 4,247 in August 2013. With the temporary closing of CJC in August 2016 due to renovations, the capacity became 3,459. In April 2019, ORC closed so the capacity decreased to 3,159. CJC reopened as DDC in April 2020, resulting in a new capacity of 3,921. In May 2020 the HDC closed, resulting in a capacity of 3,386. The capacity increased to 3,446 on 9/14/2020 with the opening of BCC. On 12/7/2020, system capacity decreased to 2,350 with the temporary closing of MDF and resulting changes to MCC and CDF.
- (e) Total capacity for HDC increased from 474 to 535 in December 2007. Booking functions were moved to HDC in August 2016 due to renovations at CJC, but the capacity remained at 535. HDC was closed on 5/6/2020 and all inmates were moved to DDC.
- (f) Total capacity for CDM increased from 600 to 768 in February 2008.
- (g) ORC temporarily closed in January 2011. It reopened in May 2016 to house inmates due to renovations at CJC; capacity was 300. ORC was closed on 4/7/2019.
- (h) BCC opened on 9/14/2020 with a capacity of 60, comprised of 30 males and 30 females.

Adult Physical Arrests

MONTH	2023	2024	% Change		
			Previous Month to Current Month	2023 Month to 2024 Month	Since January 2024
Jan	1,484	1,578	1.5%	6.3%	
Feb	1,562	1,742	10.4%	11.5%	10.4%
Mar	1,828	1,887	8.3%	3.2%	19.6%
Apr	1,573	1,848	-2.1%	17.5%	17.1%
May	1,782	2,020	9.3%	13.4%	28.0%
Jun	1,691				
Jul	1,826				
Aug	1,818				
Sep	1,634				
Oct	1,659				
Nov	1,599				
Dec	1,555				
YTD Total	20,011	9,075	Avg: 5.5%	Avg: 10.4%	28.0%

MONTH	2023 YTD TOTAL	2024 YTD TOTAL	2023 YTD to 2024 YTD % Change
Jan	1,484	1,578	6.3%
Feb	3,046	3,320	9.0%
Mar	4,874	5,207	6.8%
Apr	6,447	7,055	9.4%
May	8,229	9,075	10.3%
Jun	9,920		
Jul	11,746		
Aug	13,564		
Sep	15,198		
Oct	16,857		
Nov	18,456		
Dec	20,011		

Source: Metropolitan Nashville Police Department, data pulled on 6/17/2024. Adult arrests only. Expungements were removed.

Note: This report includes the number of adult physical arrests made in Davidson County during the time period. A physical arrest is a custodial arrest and represents an individual body and not the number of charges issued to a person. Expungements are removed.