

This document, together with the concepts and designs presented herein, is intended only for the specific purpose and client for which it was prepared. Reuse of and improper reliance on this document without written authorization and adaptation by Kimley-Horn and Associates, Inc. shall be without liability to Kimley-Horn and Associates, Inc.

ESTIMATED QUANTITIES

SPEED CUSHIONS

6' X 10.5' SPEED CUSHION WITH ONE ARROW	10
6' X 10.5' SPEED CUSHION WITH DSYL	1

SIGNING

W17-1 (VAR.) "SPEED CUSHIONS" SIGN (30" X 30")	6
RADAR FEEDBACK SIGN	1
R6-1 (VAR.) "ONE-WAY" SIGN (36" X 12")	3
R1-2 (VAR.) "YIELD" SIGN (36" X 36" X 36")	3
R6-5P (VAR.) "ROUNDBOUT CIRCULATION" PLAQUE (30" X 30")	3
W11-2 (VAR.) "PEDESTRIAN" SIGN (30" X 30")	3
W16-7P (VAR.) "DIAGONAL DOWNWARD ARROW" PLAQUE (21" X 15")	3
W13-1P (VAR.) "20 MPH" SIGN (18" X 18")	6

PAVEMENT MARKINGS AND DELINEATORS





4" WHITE FLEXIBLE DELINEATOR (EA)	81
4" YELLOW FLEXIBLE DELINEATOR (EA)	54
YELLOW REFLECTIVE PAVEMENT MARKERS (EA)	18
4" SOLID WHITE LINE (LF)	800
4" SOLID YELLOW LINE (LF)	785
6" SOLID WHITE LINE (LF)	600
6" DOTTED WHITE EXTENSION EDGE LINE (LF)	75
6" SINGLE SOLID YELLOW LINE (LF)	310
2'X3' WHITE YIELD TRIANGLES (SF)	36
2'X10' CROSSWALK MARKING (SF)	540
TRAFFIC LOGIX RUBBER CURB (EA)	37

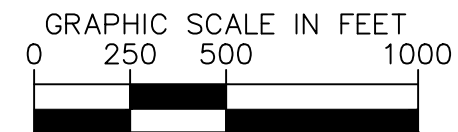
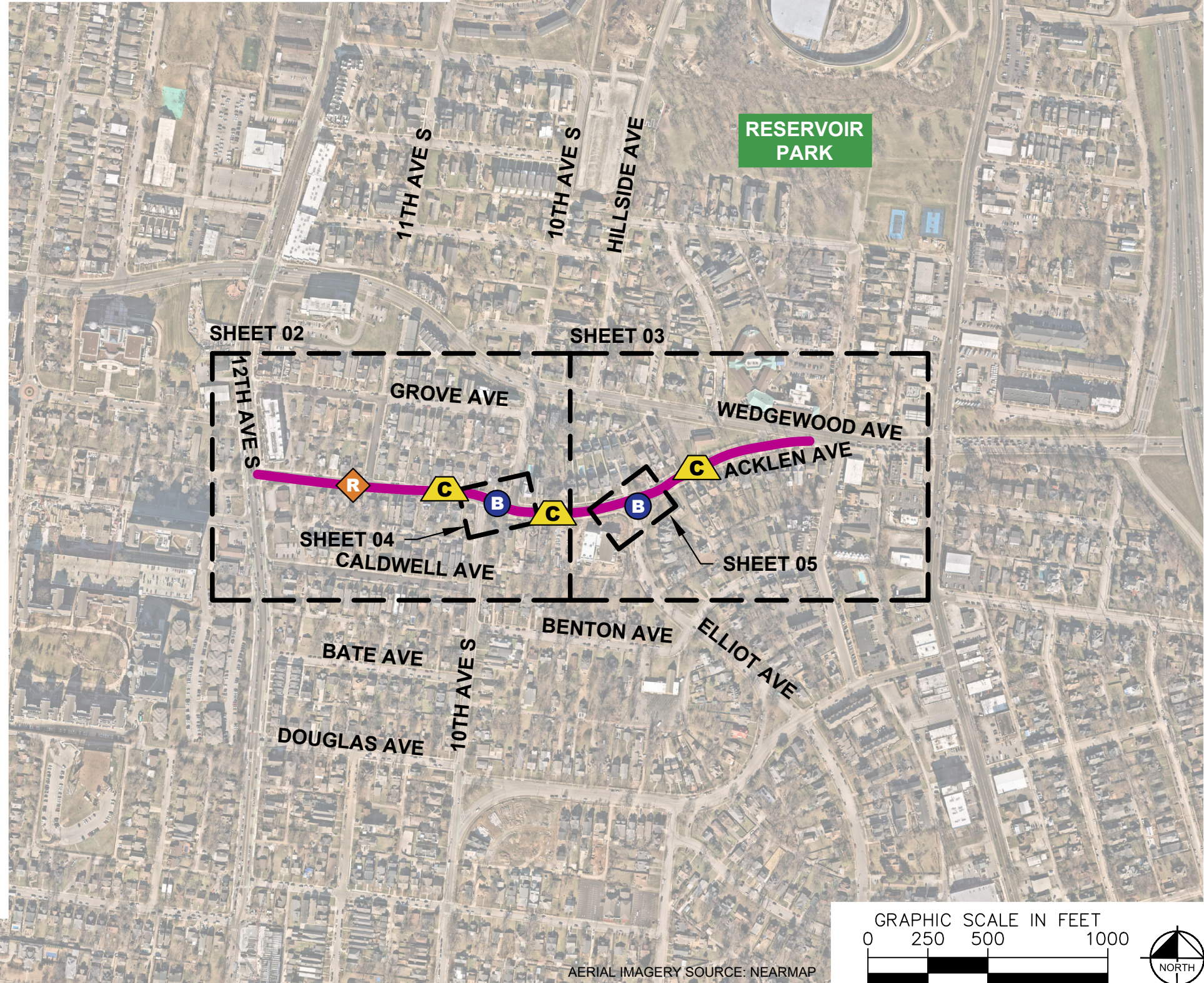
PAVEMENT

ASPHALT CONCRETE MIX GRADING B-M2 (TON)	17.8
ACS MIX GRADING E ROADWAY (TON)	10.2
BITUMINOUS MATERIAL FOR TACK COAT (TRACKLESS) (TON)	0.08

NOTE: ALL LOCATIONS ARE REFERENCED FROM CENTERLINE OF DRIVEWAYS OR OTHER LANDMARKS TO THE CENTER OF SPEED CUSHIONS OR SIGNS.

LEGEND

-  LIMITS OF TRAFFIC CALMING PROJECT
-  SPEED CUSHIONS
-  RADAR FEEDBACK SIGN
-  BULB-OUTS

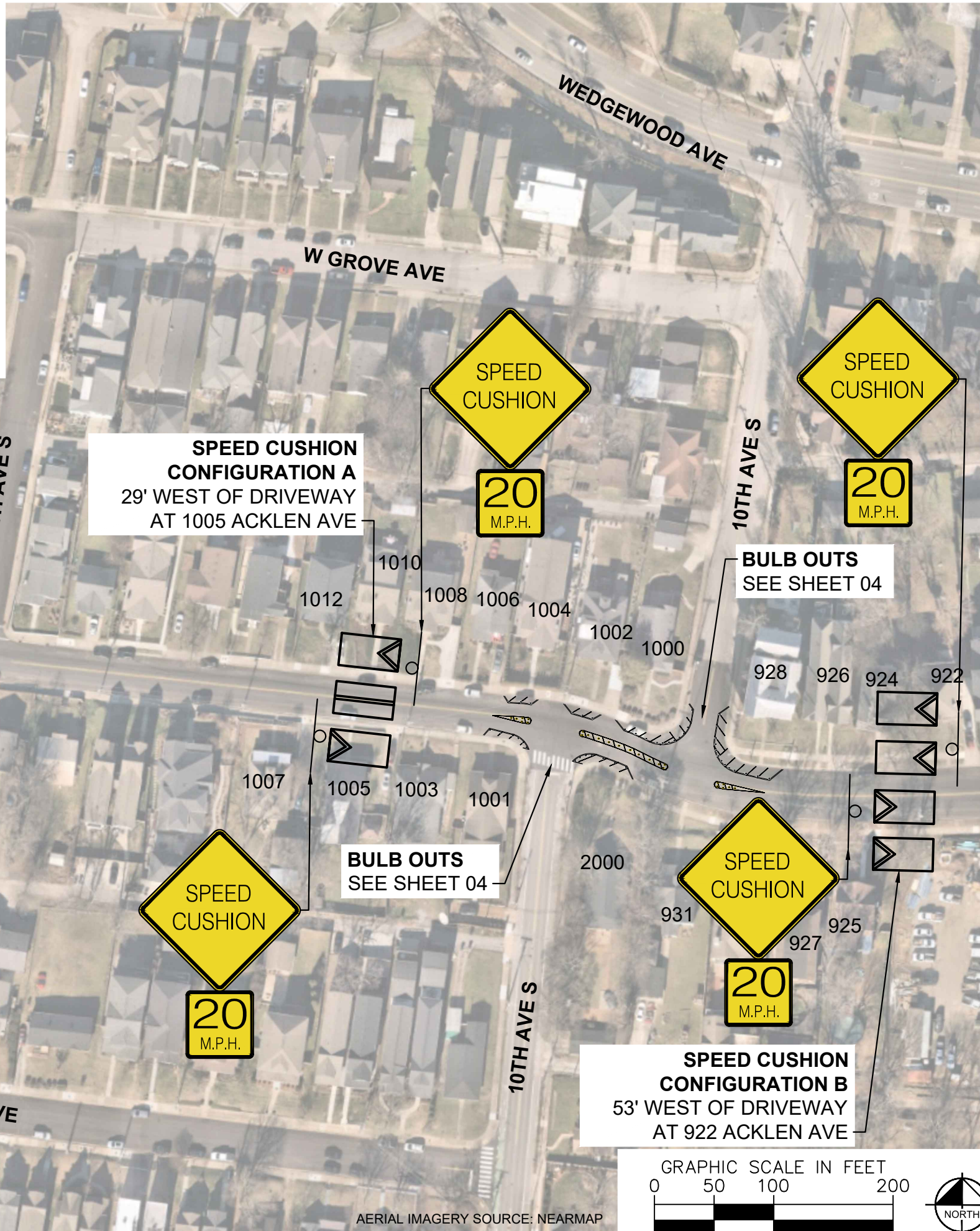


AERIAL IMAGERY SOURCE: NEARMAP

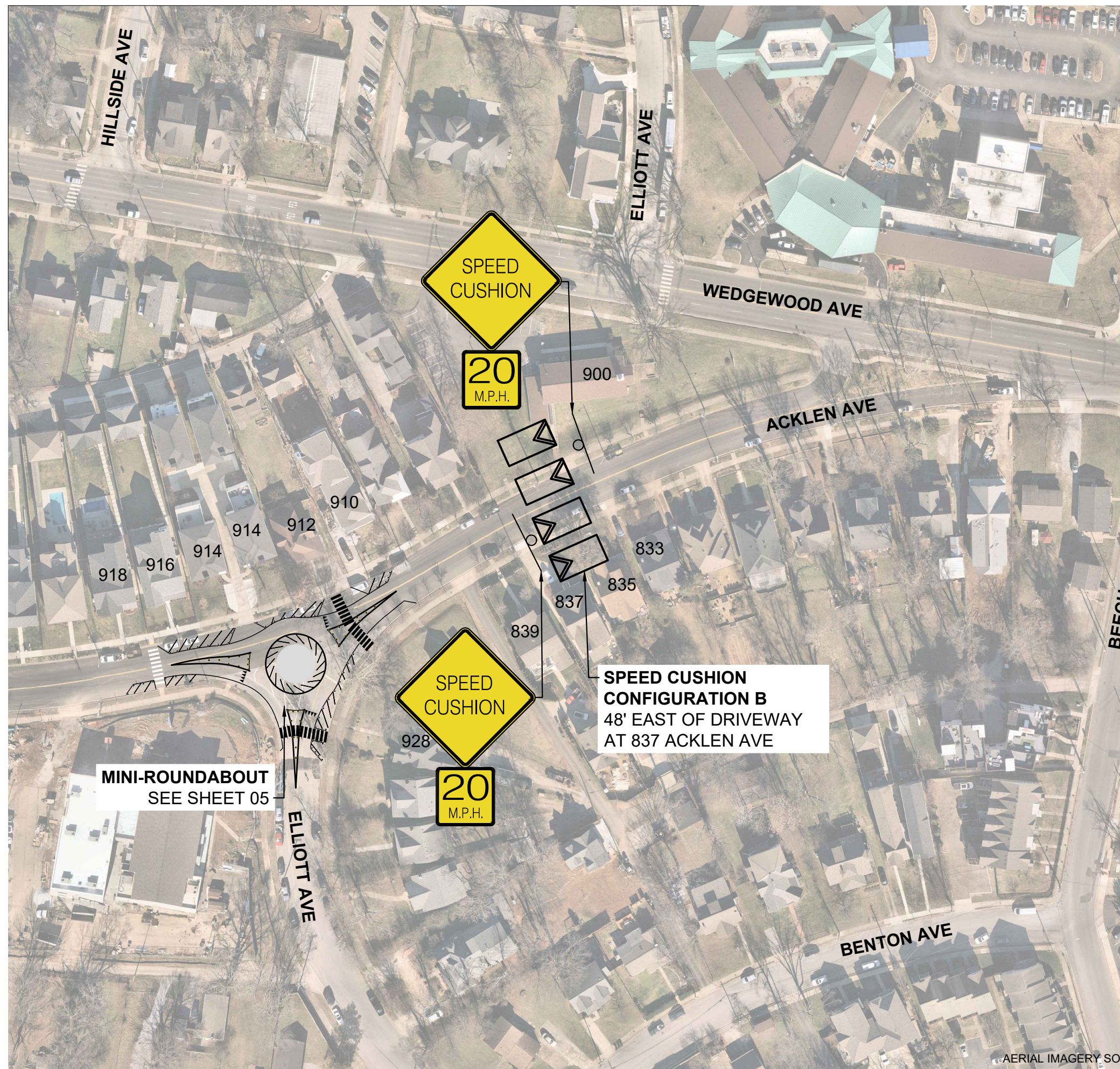
SPEED CUSHIONS



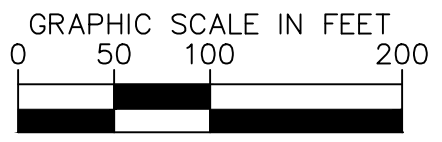
RADAR FEEDBACK SIGN



This document, together with the concepts and designs presented herein, is intended only for the specific purpose and client for which it was prepared. Reuse of and improper reliance on this document without written authorization and adaptation by Kimley-Horn and Associates, Inc. shall be without liability to Kimley-Horn and Associates, Inc.

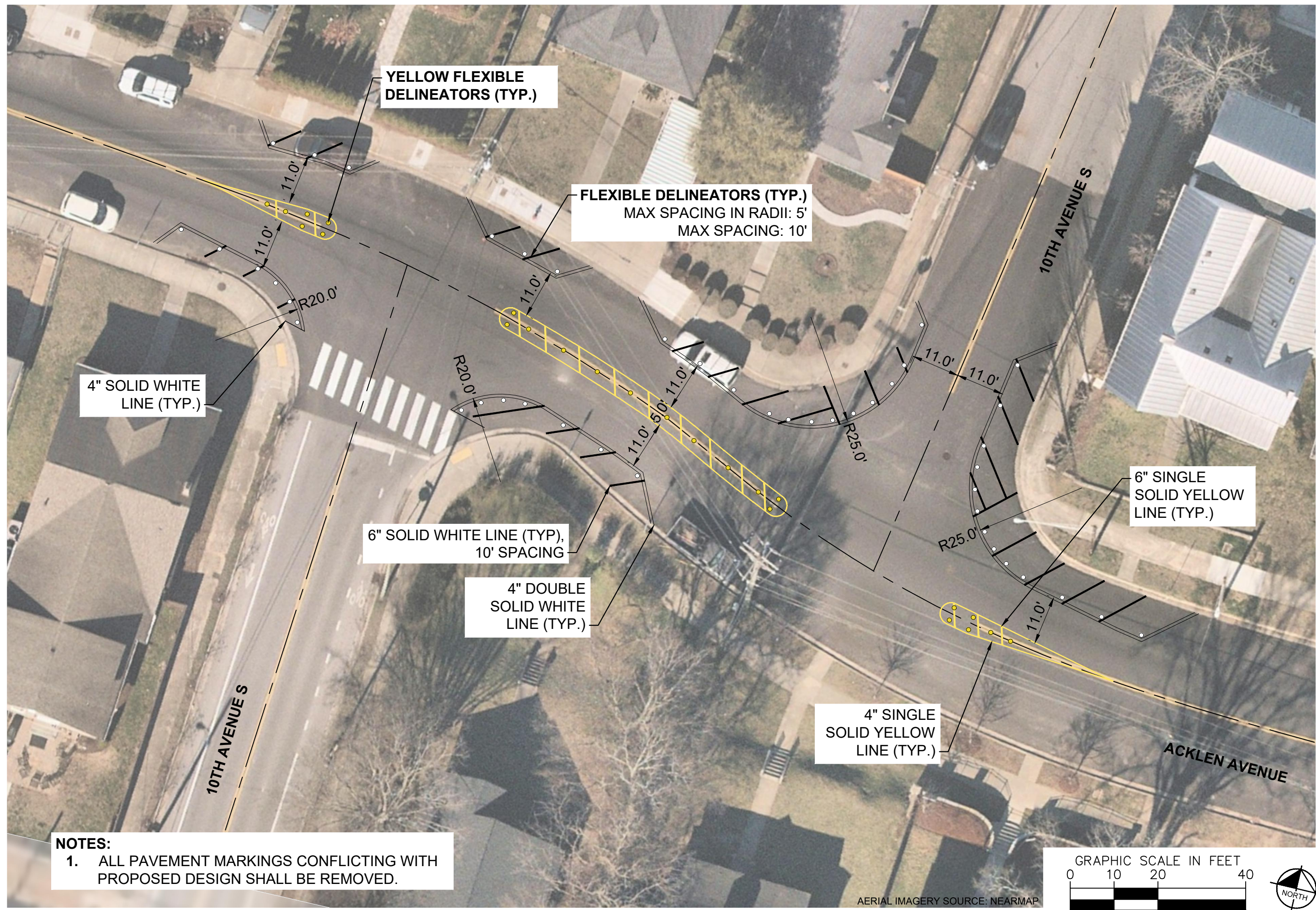


SPEED CUSHIONS

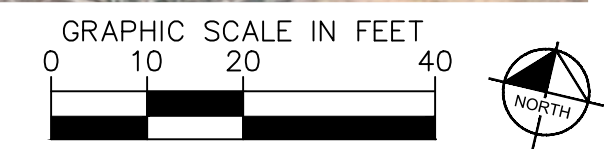


AERIAL IMAGERY SOURCE: NEARMAP

This document, together with the concepts and designs presented herein, is intended only for the specific purpose and client for which it was prepared. Reuse of and improper reliance on this document without written authorization and adaptation by Kimley-Horn and Associates, Inc. shall be without liability to Kimley-Horn and Associates, Inc.



NOTES:
1. ALL PAVEMENT MARKINGS CONFLICTING WITH PROPOSED DESIGN SHALL BE REMOVED.

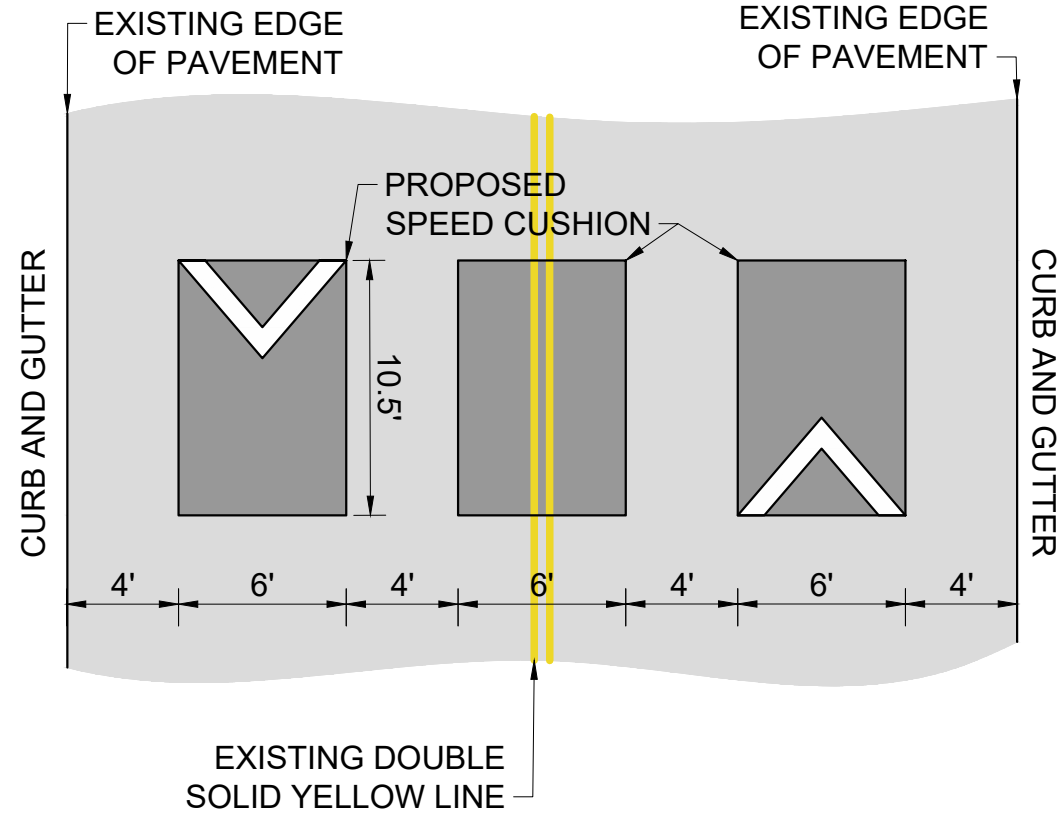


AERIAL IMAGERY SOURCE: NEARMAP

This document, together with the concepts and designs presented herein, as an instrument of service, is intended only for the specific purpose and client for which it was prepared. Reuse of and improper reliance on this document without written authorization and adaptation by Kimley-Horn and Associates, Inc. shall be without liability to Kimley-Horn and Associates, Inc.

CONFIGURATION A

34' OF PAVEMENT



CONFIGURATION B

40' OF PAVEMENT

