

ESTIMATED QUANTITIES

SPEED CUSHIONS

6' X 10.5' SPEED CUSHION WITH ONE ARROW	18
6' X 10.5' SPEED CUSHION TWO ARROWS	9

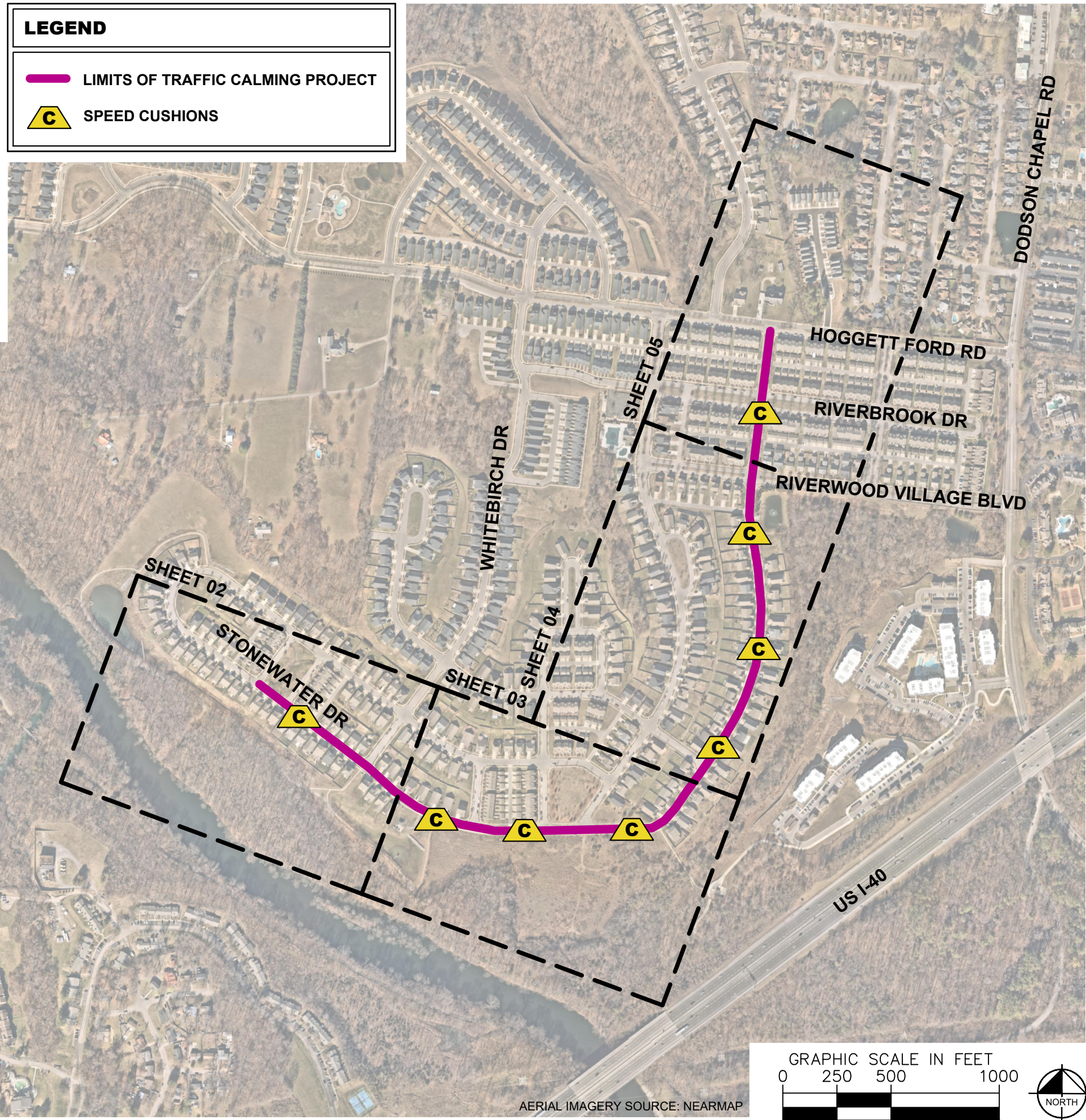
SIGNING

W17-1 (VAR.) "SPEED CUSHION" SIGN (30" X 30")	10
W17-1 (VAR.) "SPEED CUSHION AHEAD" SIGN (30" X 30")	2
W13-1P "20 M.P.H" SIGN (18" X 18")	12

NOTE: ALL LOCATIONS ARE REFERENCED FROM CENTERLINE OF DRIVEWAYS OR OTHER LANDMARKS TO THE CENTER OF SPEED CUSHIONS OR SIGNS.

LEGEND

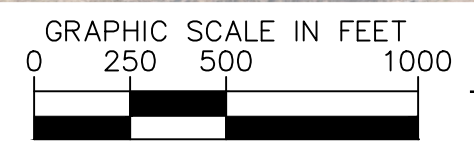
-  LIMITS OF TRAFFIC CALMING PROJECT
-  SPEED CUSHIONS



DESIGNED BY:	XXX
DRAWN BY:	JCB
CHECKED BY:	NDOT
DATE:	5/16/2024
KIMLEY-HORN PROJECT NO.	118900046

KEY

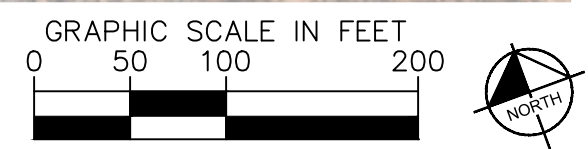
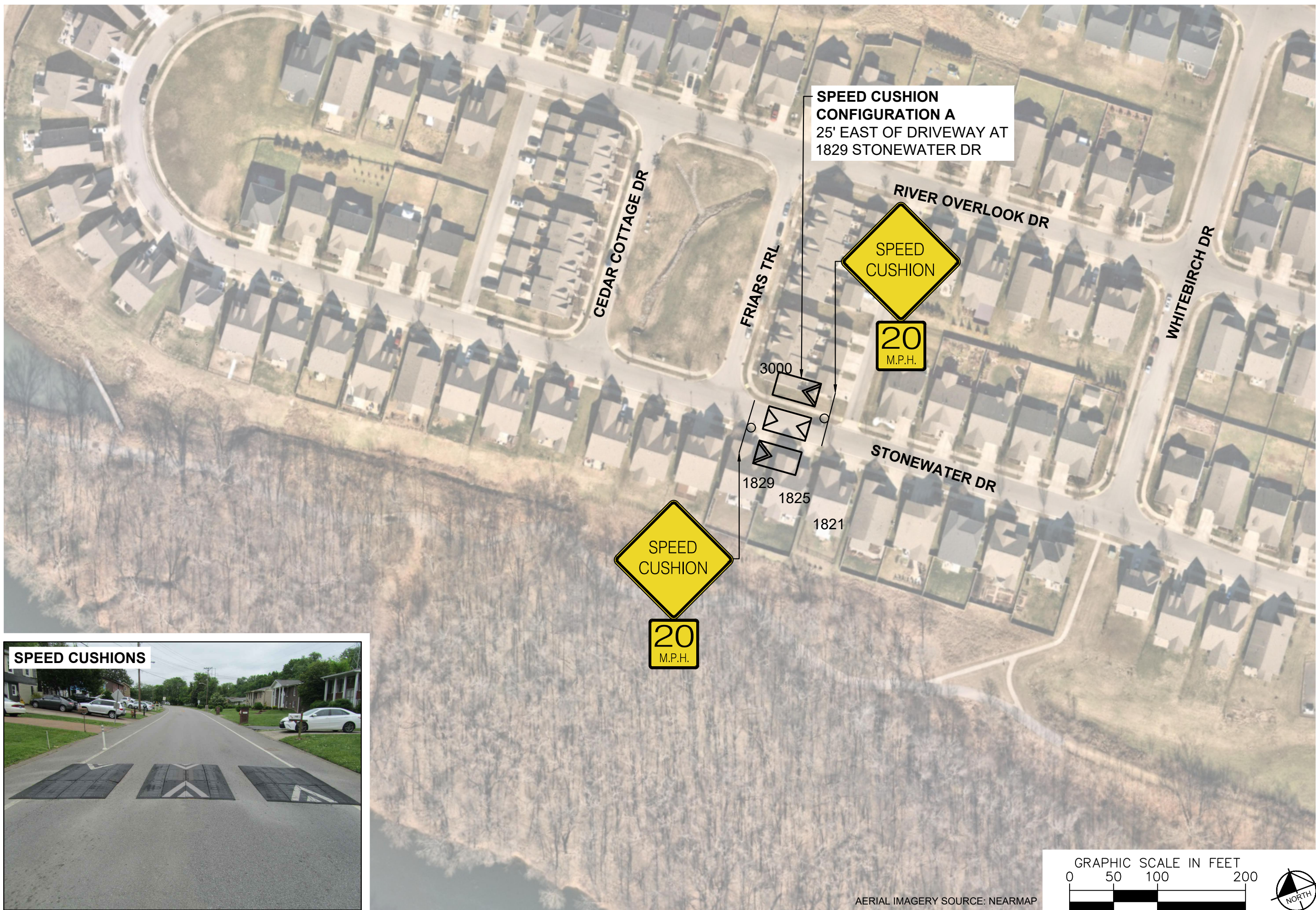
SHEET NUMBER
01



AERIAL IMAGERY SOURCE: NEARMAP

This document, together with the concepts and designs presented herein, is intended only for the specific purpose and client for which it was prepared. Reuse of and improper reliance on this document without written authorization and adaptation by Kimley-Horn and Associates, Inc. shall be without liability to Kimley-Horn and Associates, Inc.

This document, together with the concepts and designs presented herein, is intended only for the specific purpose and client for which it was prepared. Reuse and improper reliance on this document without written authorization and adaptation by Kimley-Horn and Associates, Inc. shall be without liability to Kimley-Horn and Associates, Inc.



AERIAL IMAGERY SOURCE: NEARMAP

NDOT

STONEWATER DRIVE
TRAFFIC CALMING
NASHVILLE, TN



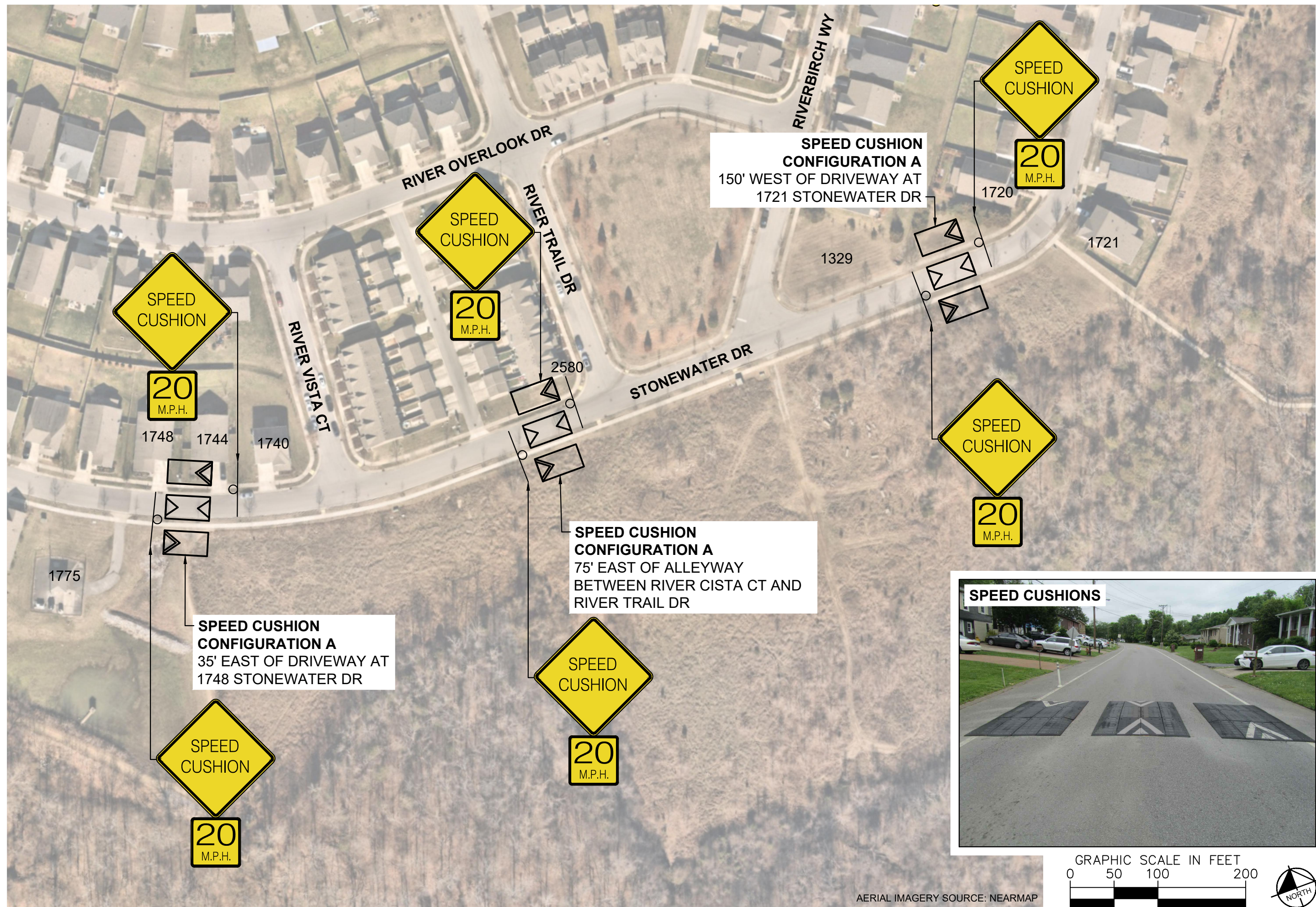
Kimley & Horn

DESIGNED BY:	XXX
DRAWN BY:	JCB
CHECKED BY:	NDOT
DATE:	5/16/2024
KIMLEY-HORN PROJECT NO.:	118900046

CONCEPT

SHEET NUMBER
02

This document, together with the concepts and designs presented herein, is intended only for the specific purpose and client for which it was prepared. Reuse of and improper reliance on this document without written authorization and adaptation by Kimley-Horn and Associates, Inc. shall be without liability to Kimley-Horn and Associates, Inc.



NDOT

STONEWATER DRIVE
TRAFFIC CALMING
NASHVILLE, TN



Kimley-Horn

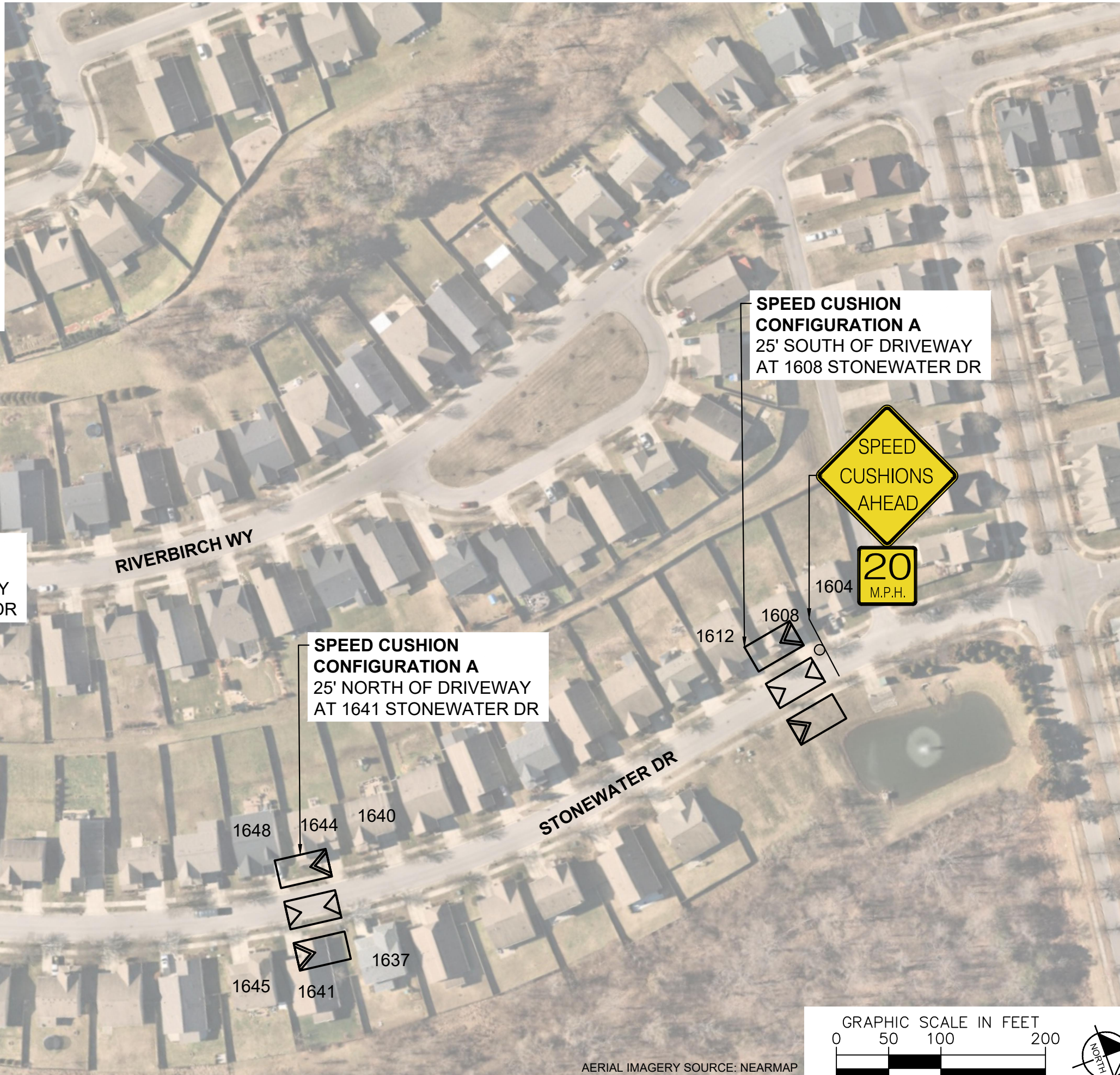
DESIGNED BY:	XXX
DRAWN BY:	JCB
CHECKED BY:	NDOT
DATE:	5/16/2024
KIMLEY-HORN PROJECT NO.:	118900046

CONCEPT

SHEET NUMBER
03

AERIAL IMAGERY SOURCE: NEARMAP

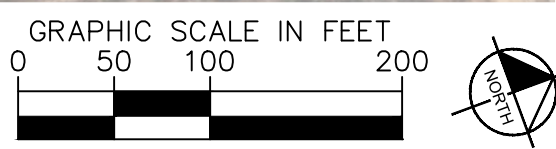
SPEED CUSHIONS



SPEED CUSHION CONFIGURATION A
25' NORTH OF DRIVEWAY
AT 1684 STONEWATER DR

SPEED CUSHION CONFIGURATION A
25' NORTH OF DRIVEWAY
AT 1641 STONEWATER DR

SPEED CUSHION CONFIGURATION A
25' SOUTH OF DRIVEWAY
AT 1608 STONEWATER DR



AERIAL IMAGERY SOURCE: NEARMAP



DESIGNED BY:	XXX
DRAWN BY:	JCB
CHECKED BY:	NDOT
DATE:	5/16/2024
KIMLEY-HORN PROJECT NO.:	118900046

This document, together with the concepts and designs presented herein, is intended only for the specific purpose and client for which it was prepared. Reuse of and improper reliance on this document without written authorization and adaptation by Kimley-Horn and Associates, Inc. shall be without liability to Kimley-Horn and Associates, Inc.



SPEED CUSHION CONFIGURATION A
125' SOUTH OF RIVERBROOK DR
AT STONEWATER DR
INTERSECTION EASTBOUND



SPEED CUSHIONS

NDOT

**STONEWATER DRIVE
TRAFFIC CALMING**
NASHVILLE, TN



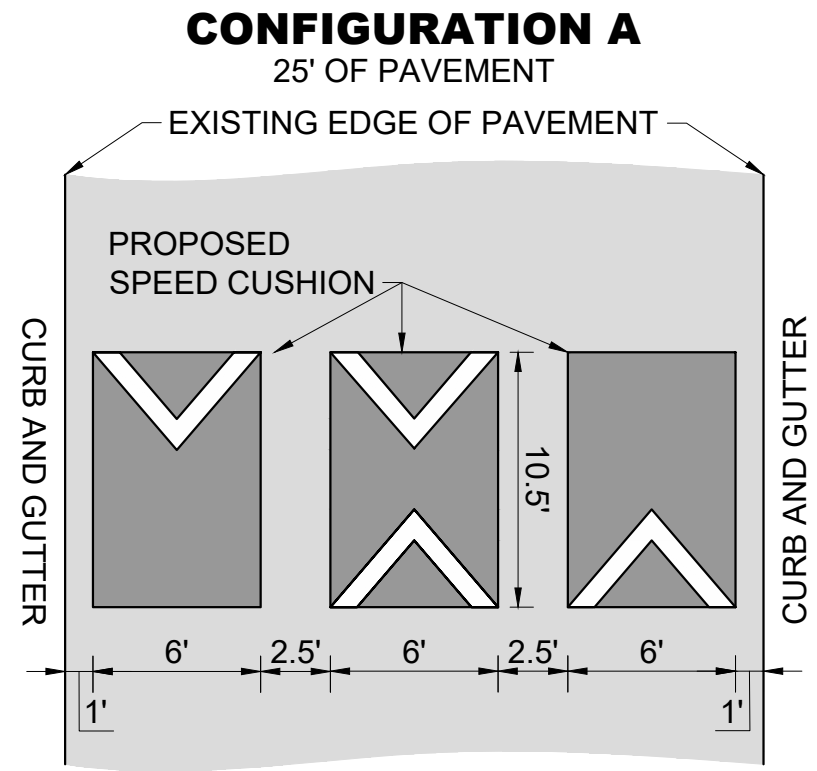
Kimley»Horn

DESIGNED BY:	XXX
DRAWN BY:	JCB
CHECKED BY:	NDOT
DATE:	5/16/2024
KIMLEY-HORN PROJECT NO. 118900046	

CONCEPT

SHEET NUMBER
05

This document, together with the concepts and designs presented herein, as an instrument of service, is intended only for the specific purpose and client for which it was prepared. Reuse of and improper reliance on this document without written authorization and adaptation by Kimley-Horn and Associates, Inc. shall be without liability to Kimley-Horn and Associates, Inc.



STONEWATER DRIVE
TRAFFIC CALMING
NASHVILLE, TN



DESIGNED BY:	XXX
DRAWN BY:	JCB
CHECKED BY:	NDOT
DATE:	5/16/2024
KIMLEY-HORN PROJECT NO.	118800046

DETAIL

SHEET NUMBER
06