





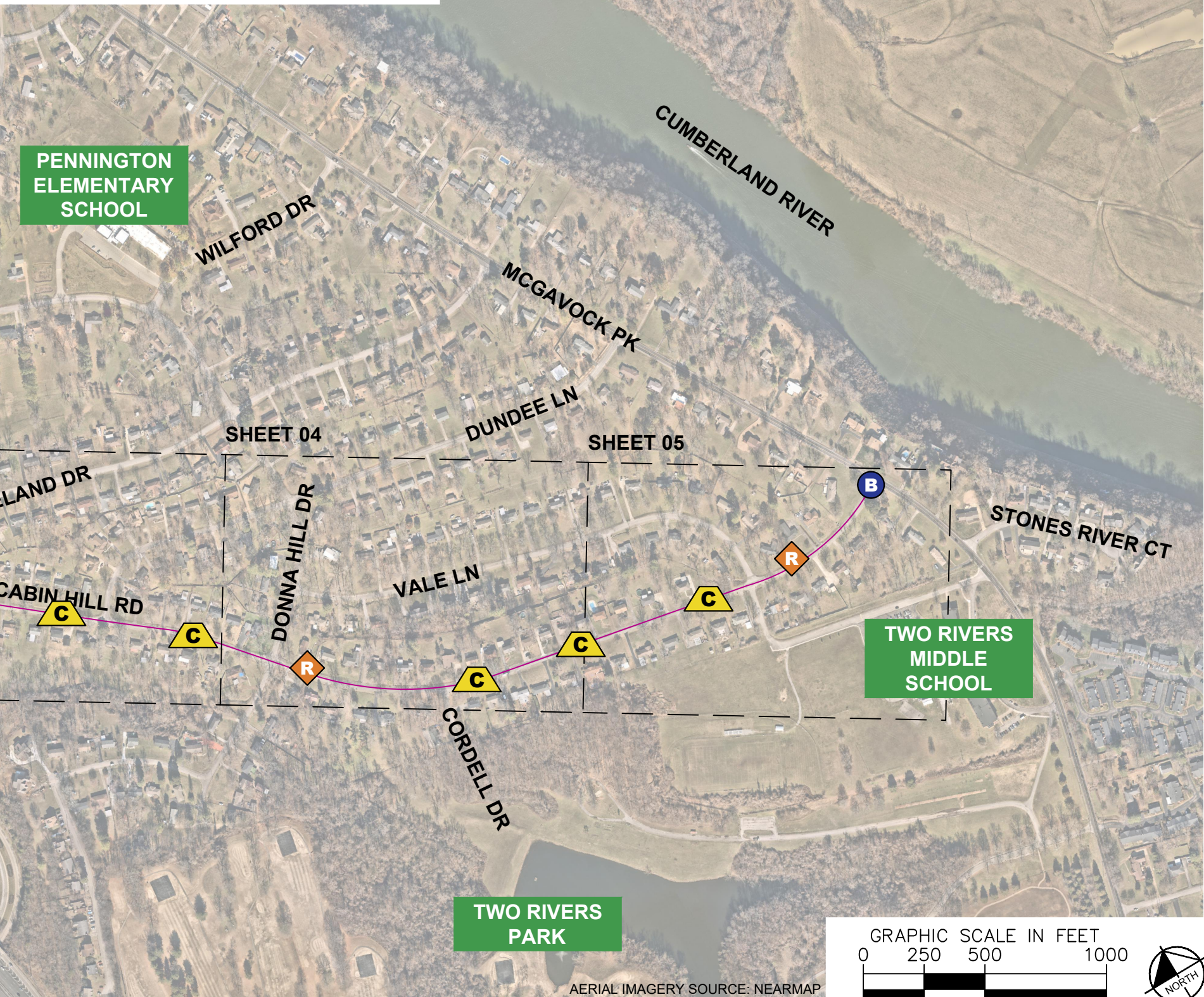
ESTIMATED QUANTITIES

SPEED CUSHIONS	
6' X 10.5' SPEED CUSHION WITH ONE ARROW	16
SIGNING	
W17-1 (VAR.) "SPEED CUSHION" SIGN (30" X 30")	4
W17-1 (VAR.) "SPEED CUSHIONS AHEAD" SIGN (30" X 30")	4
W13-1P "20 M.P.H" SIGN (18" X 18")	8
RADAR FEEDBACK SIGN	2
PAVEMENT MARKINGS AND DELINEATORS	
BULB-OUT STRIPING (LF)	290
4" SOLID WHITE LINE (LF)	165
24" WHITE STOP LINE (LF)	10

NOTE: ALL LOCATIONS ARE REFERENCED FROM CENTERLINE OF DRIVEWAYS OR OTHER LANDMARKS TO THE CENTER OF SPEED CUSHIONS OR SIGNS.

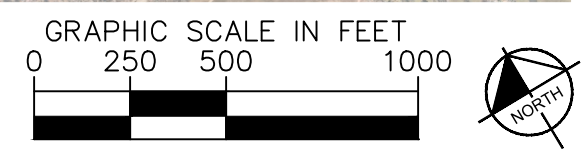
LEGEND

-  LIMITS OF TRAFFIC CALMING PROJECT
-  SPEED CUSHIONS
-  RADAR FEEDBACK SIGN
-  BULB-OUTS



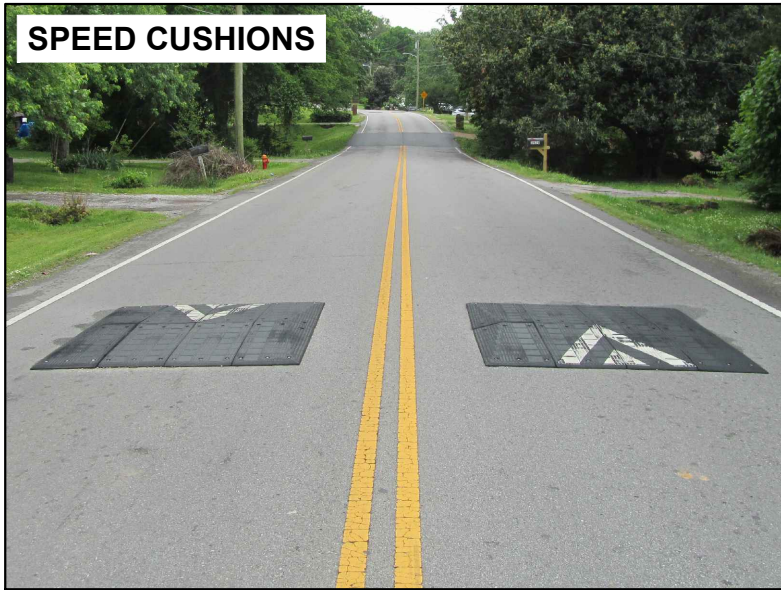
DESIGNED BY:	DJP
DRAWN BY:	DJP
CHECKED BY:	NDOT
DATE:	7/25/2024
KIMLEY-HORN PROJECT NO.:	118900046

KEY
SHEET NUMBER
01



AERIAL IMAGERY SOURCE: NEARMAP

SPEED CUSHIONS



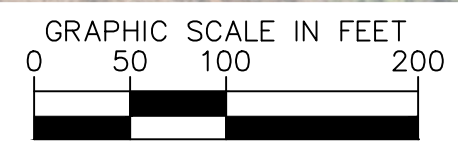
**CABIN HILL ROAD
TRAFFIC CALMING**
NASHVILLE, TN



DESIGNED BY:	DJP
DRAWN BY:	DJP
CHECKED BY:	NDOT
DATE:	7/29/2024
KIMLEY-HORN PROJECT NO.:	11890046

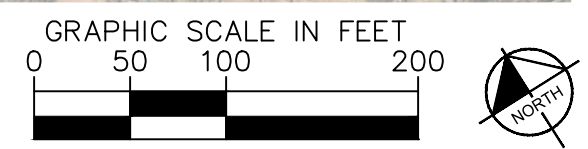
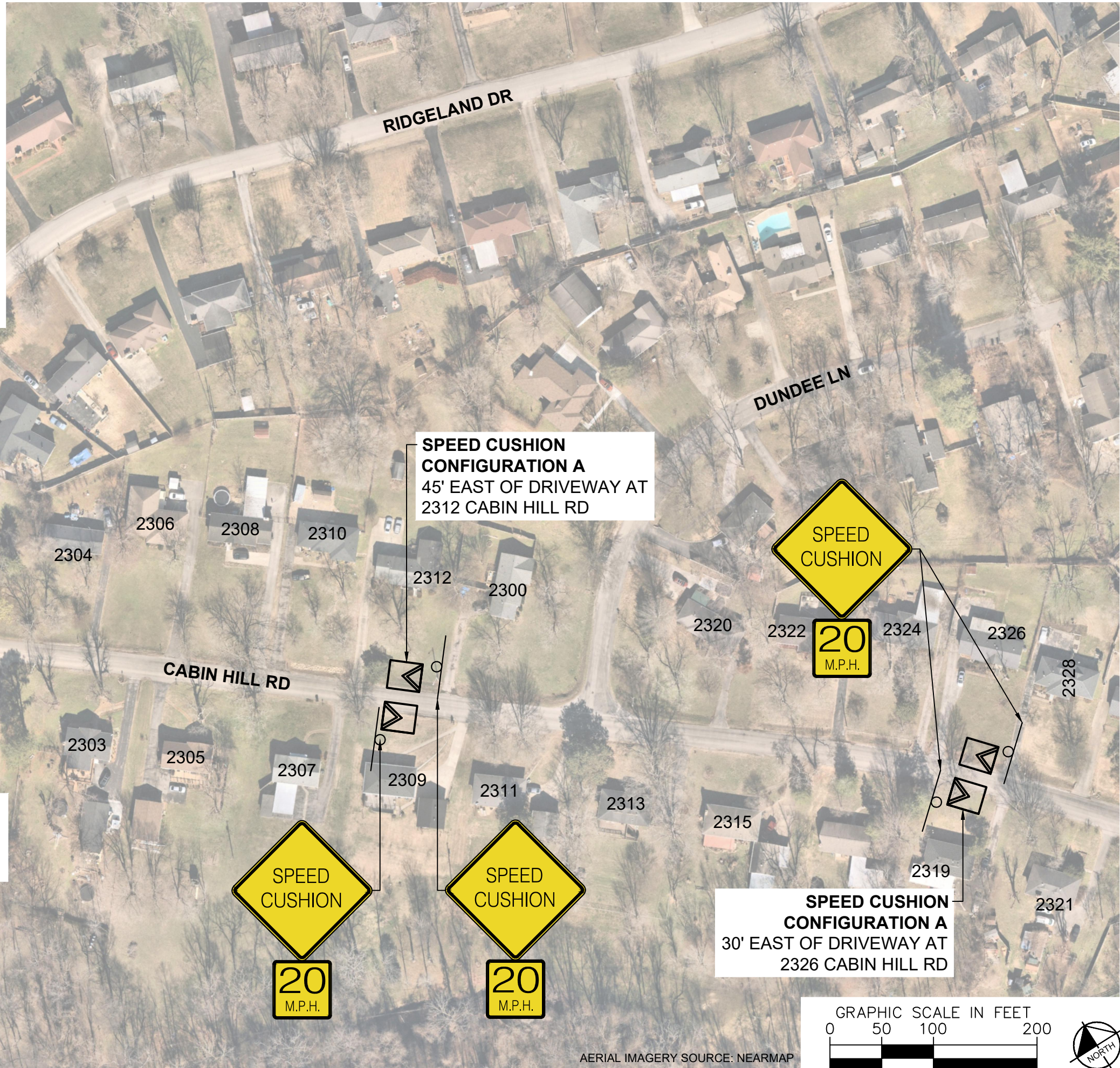
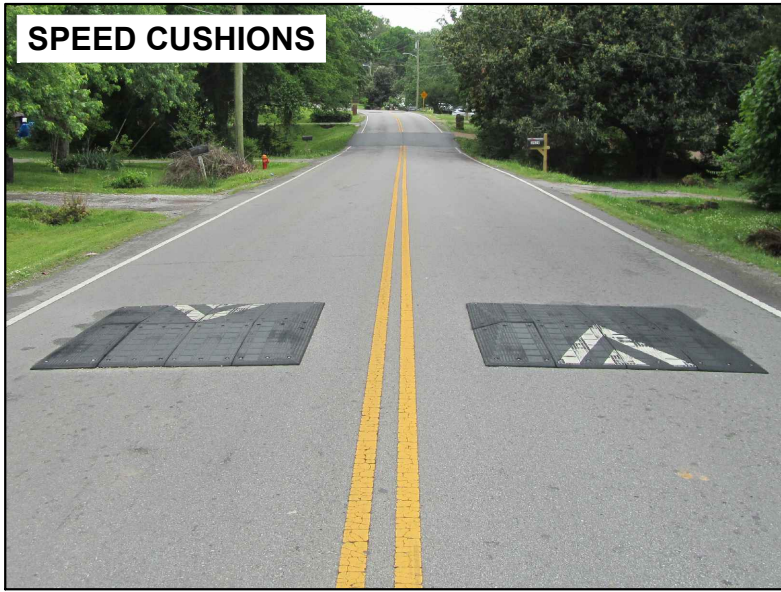
CONCEPT

SHEET NUMBER
02



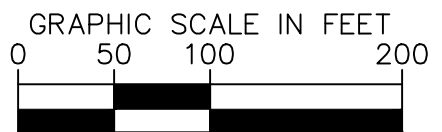
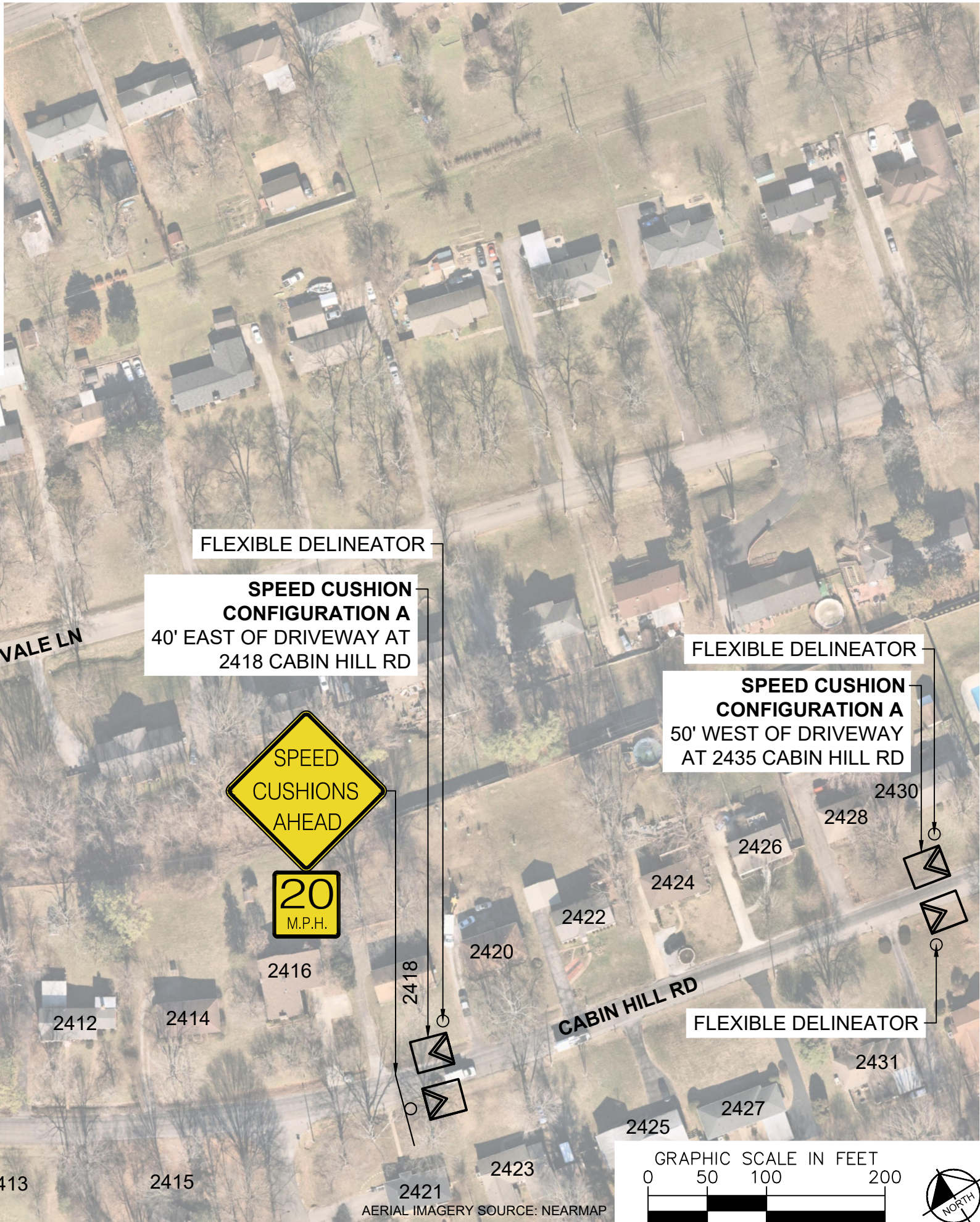
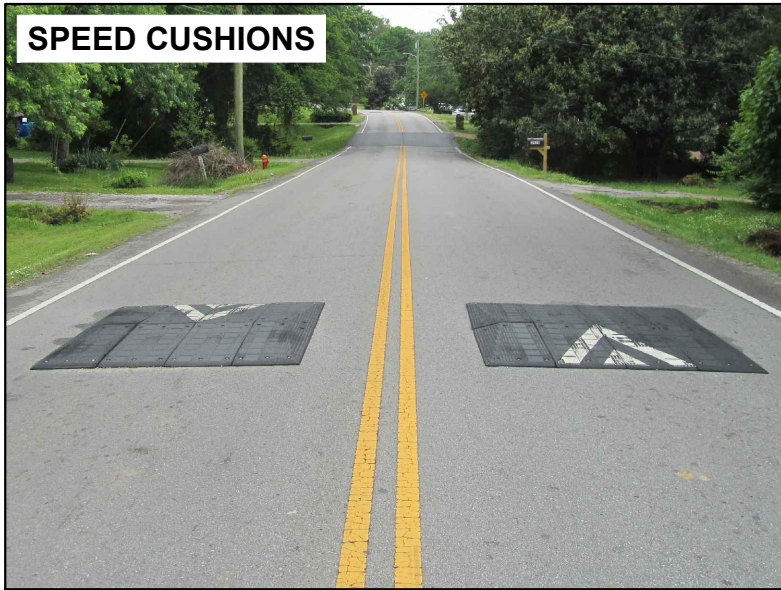
AERIAL IMAGERY SOURCE: NEARMAP

SPEED CUSHIONS



AERIAL IMAGERY SOURCE: NEARMAP

SPEED CUSHIONS



AERIAL IMAGERY SOURCE: NEARMAP



**CABIN HILL ROAD
TRAFFIC CALMING**
NASHVILLE, TN

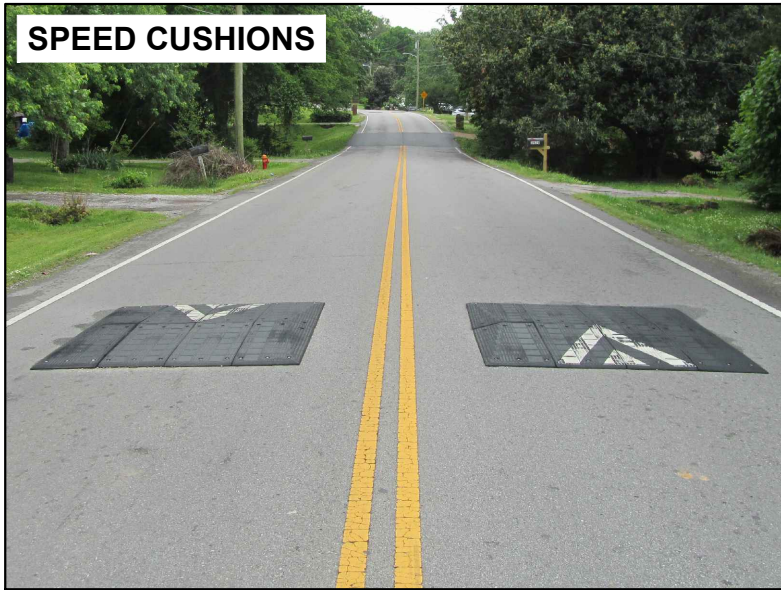


DESIGNED BY:	DJP
DRAWN BY:	DJP
CHECKED BY:	NDOT
DATE:	7/25/2024
KIMLEY-HORN PROJECT NO. 118900046	

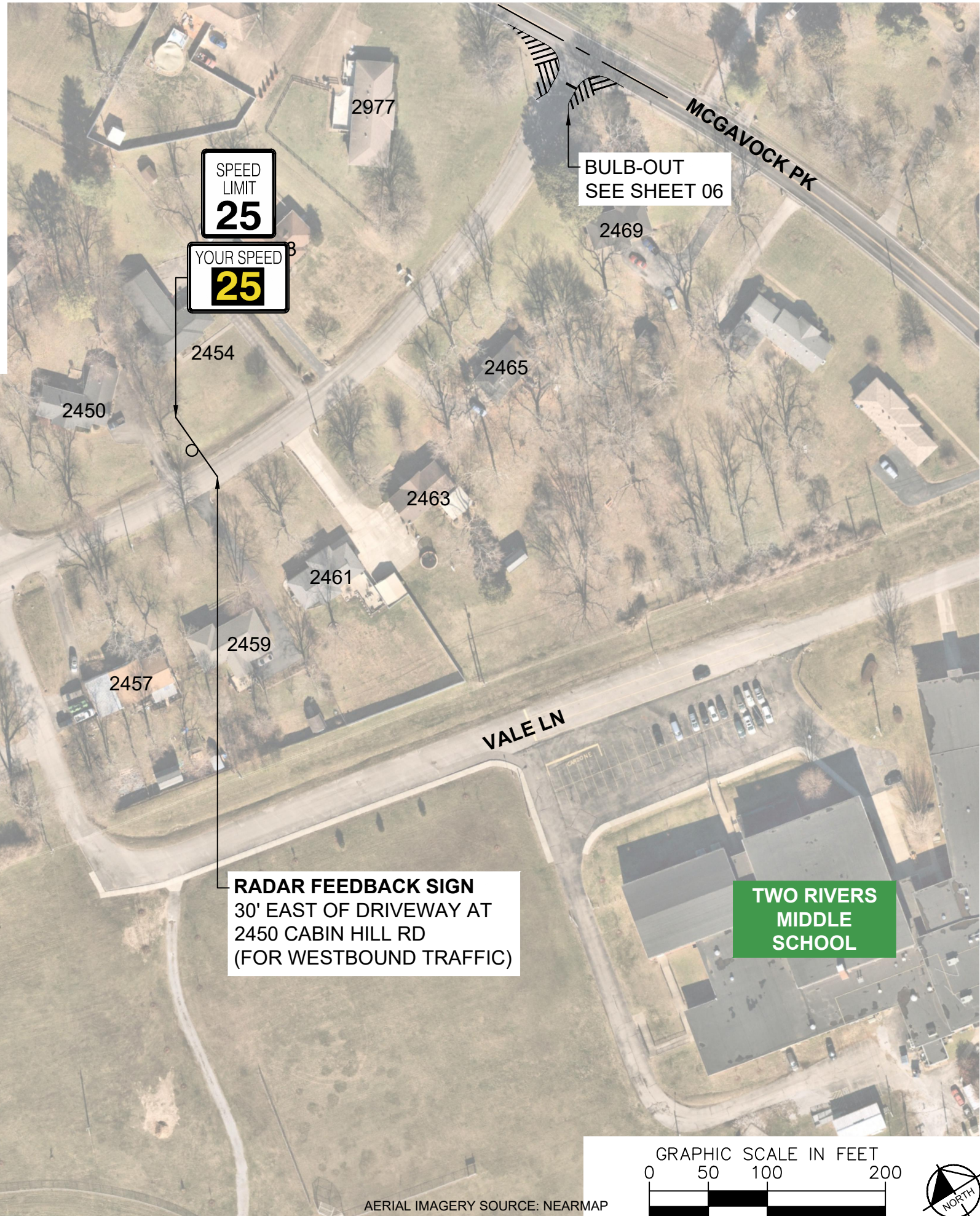
CONCEPT
SHEET NUMBER
04

This document, together with the concepts and designs presented herein, is intended only for the specific purpose and client for which it was prepared. Reuse of and improper reliance on this document without written authorization and adaptation by Kimley-Horn and Associates, Inc. shall be without liability to Kimley-Horn and Associates, Inc.

SPEED CUSHIONS



RADAR FEEDBACK SIGN

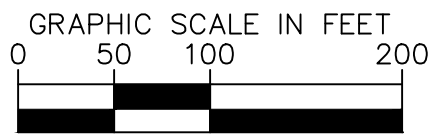


SPEED CUSHION CONFIGURATION A
40' WEST OF DRIVEWAY AT 2451 CABIN HILL RD

FLEXIBLE DELINEATOR

RADAR FEEDBACK SIGN
30' EAST OF DRIVEWAY AT 2450 CABIN HILL RD
(FOR WESTBOUND TRAFFIC)

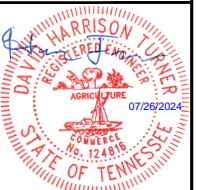
TWO RIVERS MIDDLE SCHOOL



AERIAL IMAGERY SOURCE: NEARMAP

NDOT

CABIN HILL ROAD
TRAFFIC CALMING
NASHVILLE, TN



Kimley»Horn

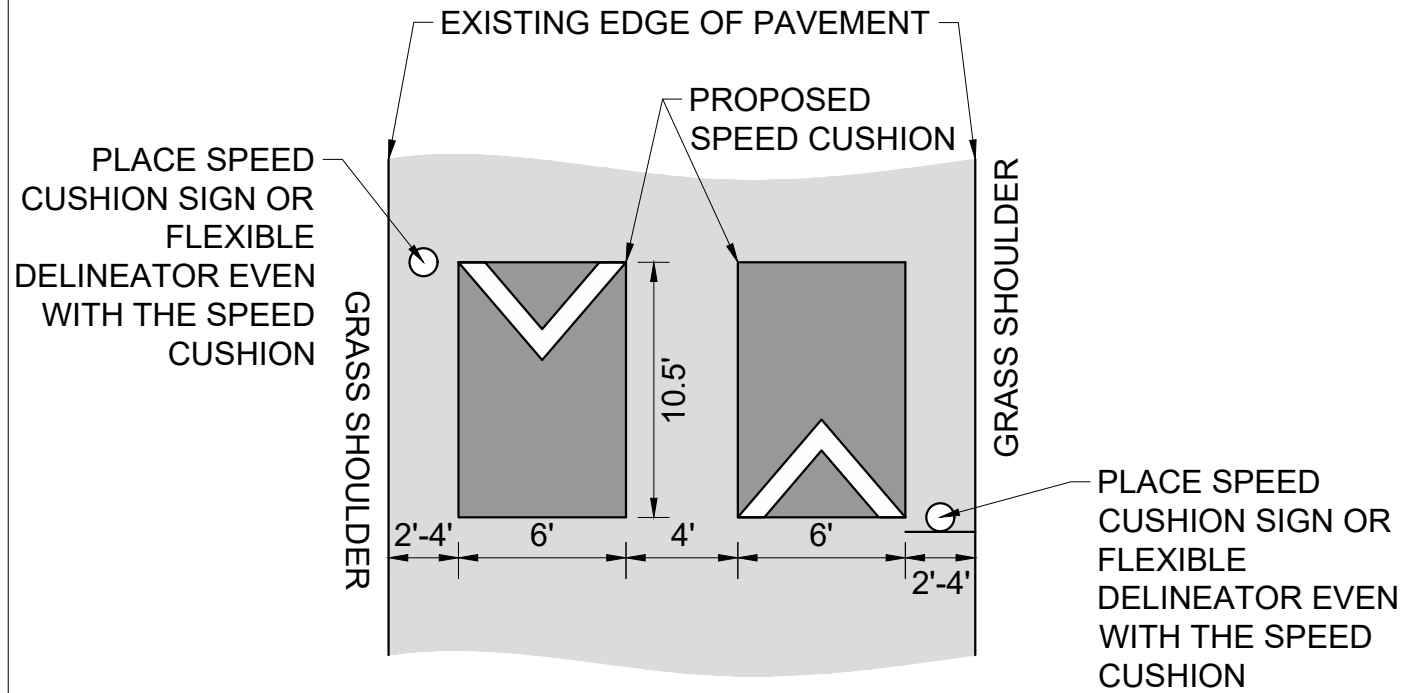
DESIGNED BY:	DJP
DRAWN BY:	DJP
CHECKED BY:	NDOT
DATE:	7/29/2024
KIMLEY-HORN PROJECT NO.:	11890046

CONCEPT

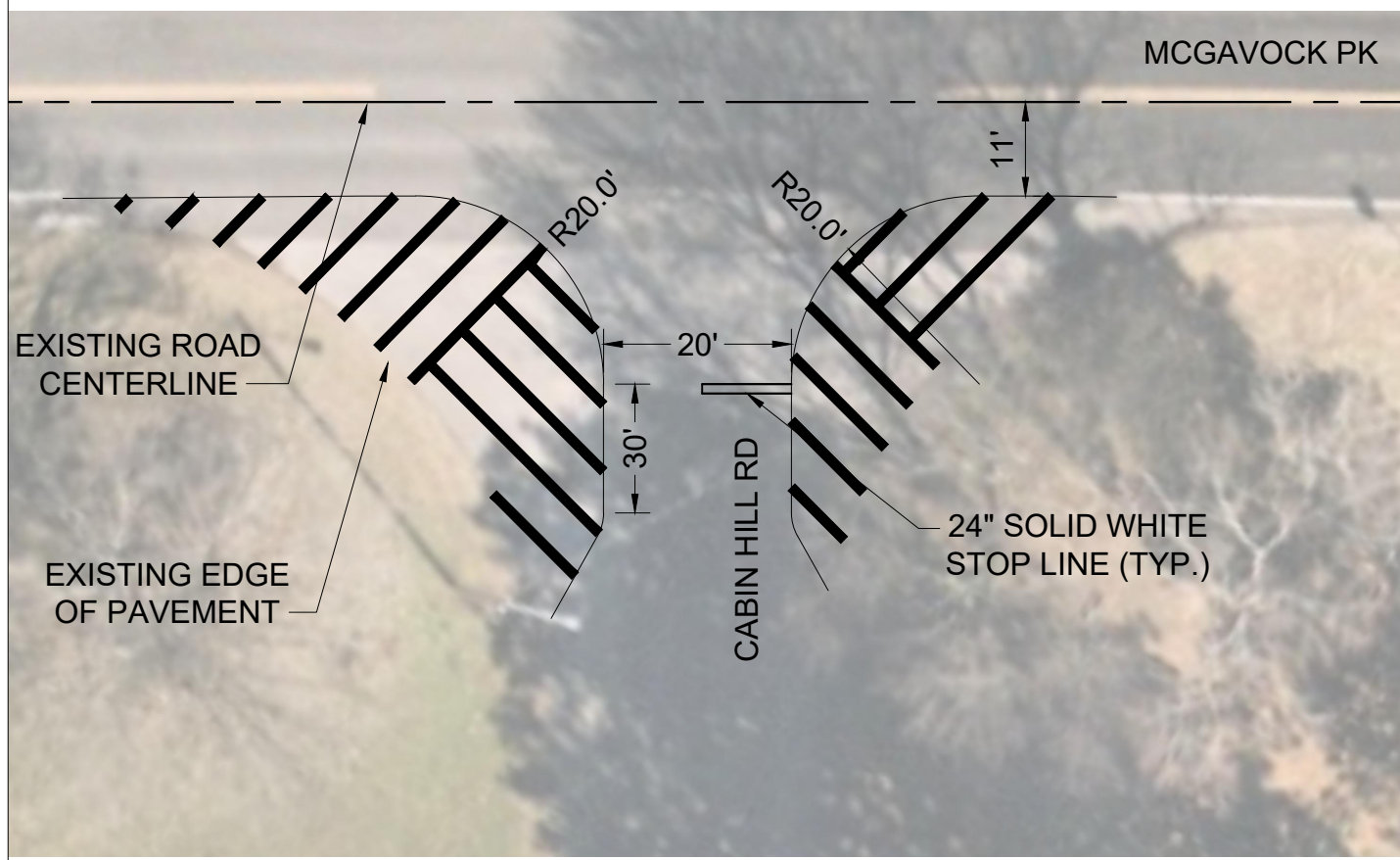
SHEET NUMBER
05

CONFIGURATION A

PAVEMENT WIDTH: 20'-24'



BULB-OUT CONFIGURATION



CABIN HILL ROAD
TRAFFIC CALMING
NASHVILLE, TN



DESIGNED BY:	DJP
DRAWN BY:	DJP
CHECKED BY:	NDOT
DATE:	7/25/2024
KIMLEY-HORN PROJECT NO. 118800046	

DETAIL

SHEET NUMBER
06

This document, together with the concepts and designs presented herein, is intended only for the specific purpose and client for which it was prepared. Reuse of and improper reliance on this document without written authorization and adaptation by Kimley-Horn and Associates, Inc. shall be without liability to Kimley-Horn and Associates, Inc.