

ESTIMATED QUANTITIES

SPEED CUSHIONS

6' X 10.5' SPEED CUSHION WITH ONE ARROW	18
---	----

SIGNING

W17-1 (VAR.) "SPEED CUSHION" SIGN (30" X 30")	18
---	----

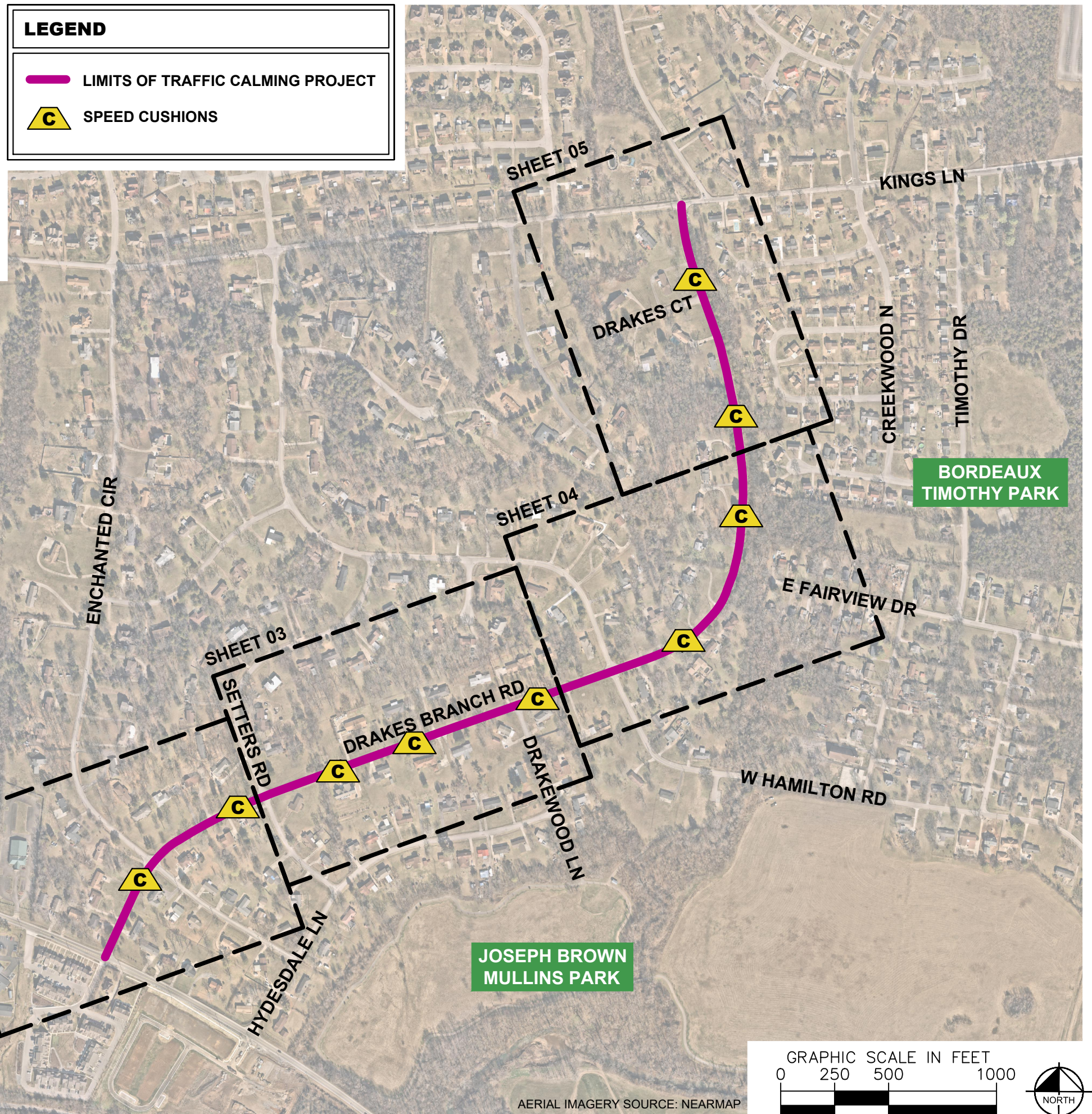
W13-1P "20 M.P.H" SIGN (18" X 18")	18
------------------------------------	----

NOTE: ALL LOCATIONS ARE REFERENCED FROM CENTERLINE OF DRIVEWAYS OR OTHER LANDMARKS TO THE CENTER OF SPEED CUSHIONS OR SIGNS.

LEGEND

 LIMITS OF TRAFFIC CALMING PROJECT

 SPEED CUSHIONS



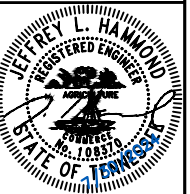
GRAPHIC SCALE IN FEET
0 250 500 1000



AERIAL IMAGERY SOURCE: NEARMAP



**DRAKES BRANCH ROAD
TRAFFIC CALMING**
NASHVILLE, TN



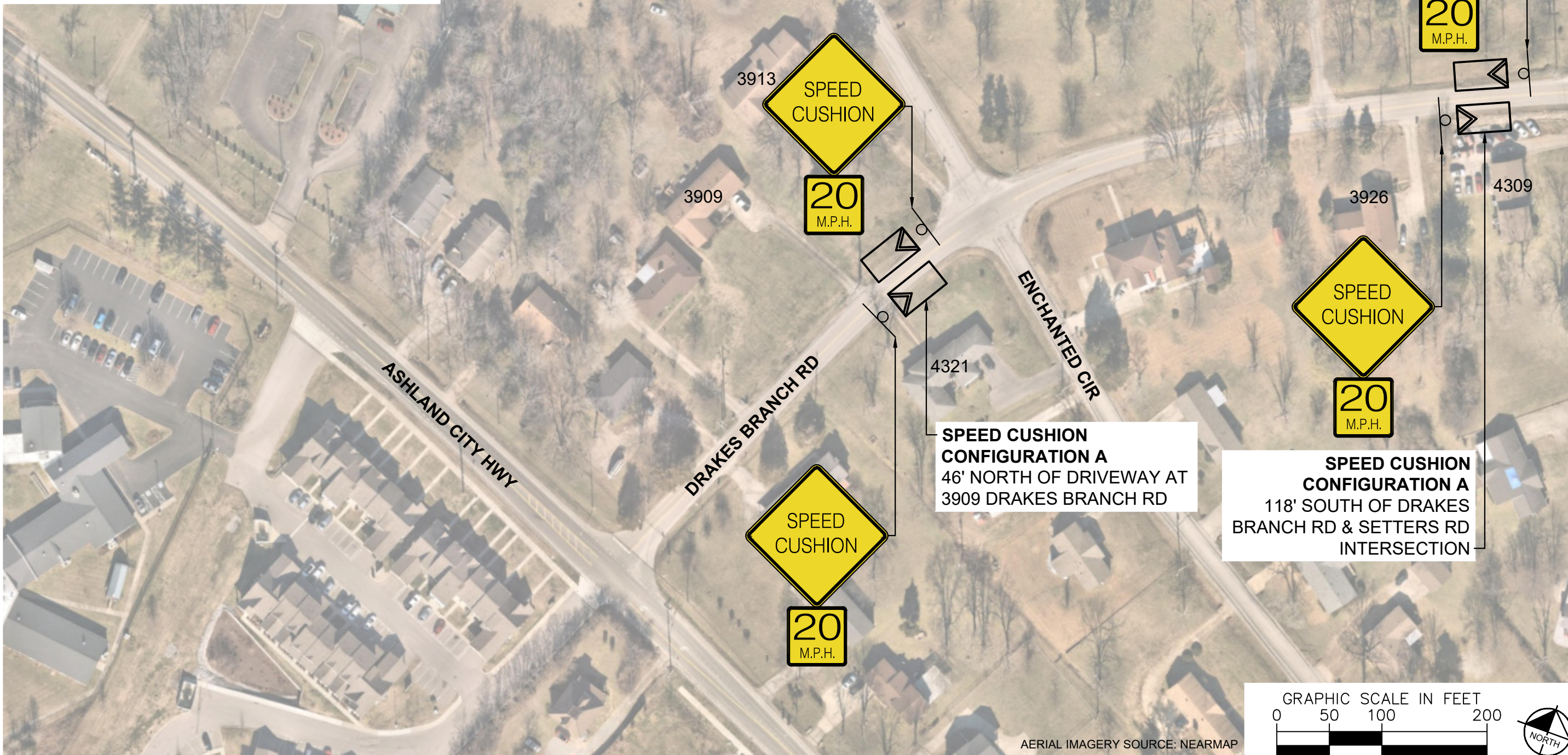
DESIGNED BY: ALB
DRAWN BY: JCB
CHECKED BY: NDOT
DATE: 7/30/2024
KIMLEY-HORN PROJECT NO. 118800051

KEY

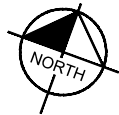
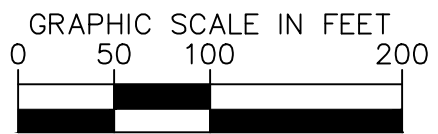
SHEET NUMBER
01

This document, together with the concepts and designs presented herein, is intended only for the specific purpose and client for which it was prepared. Reuse of and improper reliance on this document without written authorization and adaptation by Kimley-Horn and Associates, Inc. shall be without liability to Kimley-Horn and Associates, Inc.

SPEED CUSHIONS



AERIAL IMAGERY SOURCE: NEARMAP



DRAKES BRANCH ROAD
TRAFFIC CALMING
NASHVILLE, TN

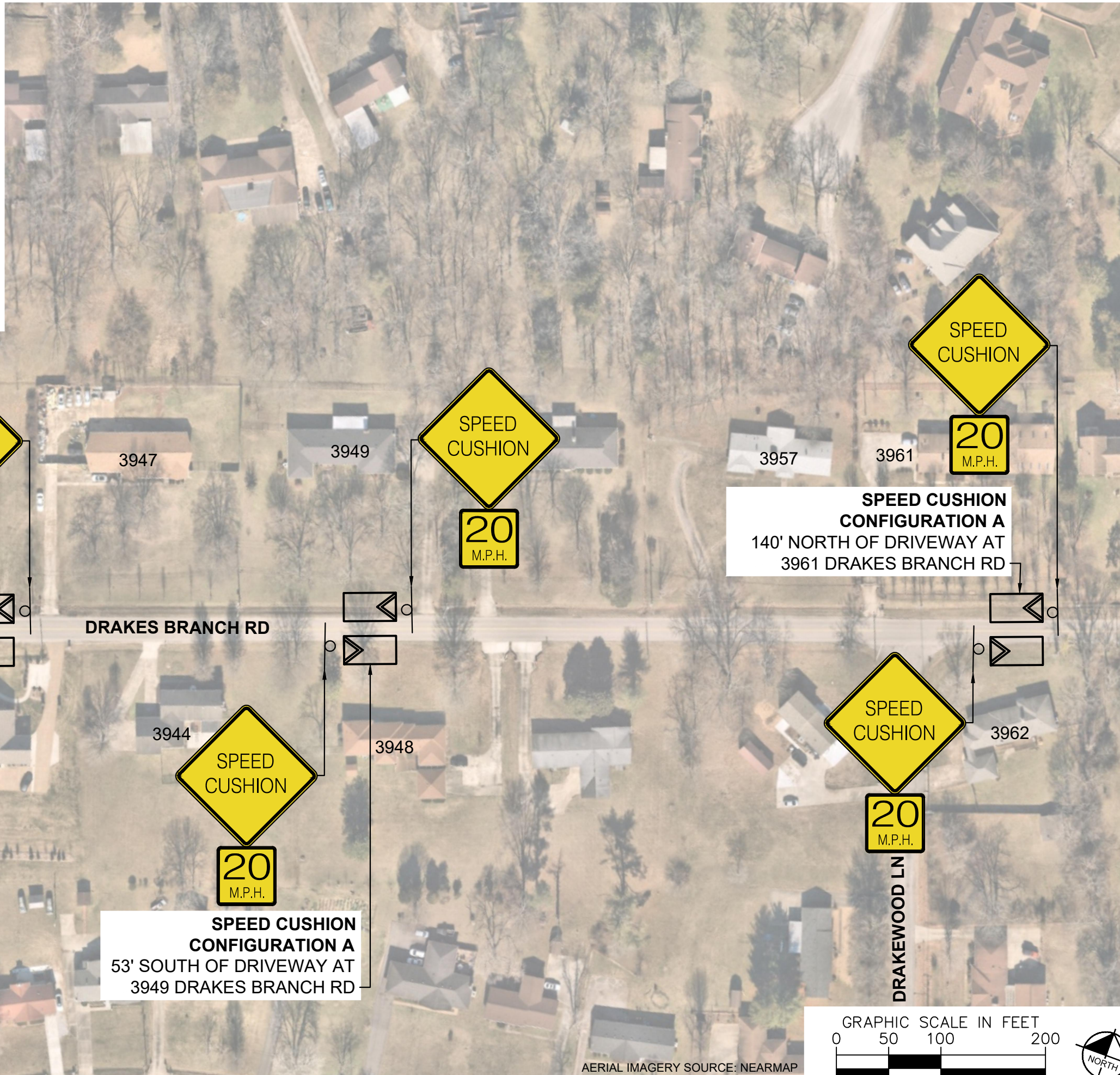


DESIGNED BY:	ALB
DRAWN BY:	JCB
CHECKED BY:	NDOT
DATE:	7/30/2024
KIMLEY-HORN PROJECT NO. 118800051	

CONCEPT

SHEET NUMBER
02

SPEED CUSHIONS



SETTERS RD

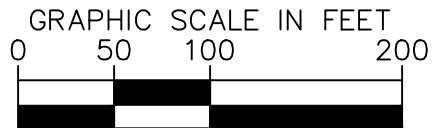
DRAKES BRANCH RD

DRAKEWOOD LN

SPEED CUSHION CONFIGURATION A
60' SOUTH OF DRIVEWAY AT
3947 DRAKES BRANCH RD

SPEED CUSHION CONFIGURATION A
53' SOUTH OF DRIVEWAY AT
3949 DRAKES BRANCH RD

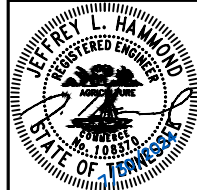
SPEED CUSHION CONFIGURATION A
140' NORTH OF DRIVEWAY AT
3961 DRAKES BRANCH RD



AERIAL IMAGERY SOURCE: NEARMAP



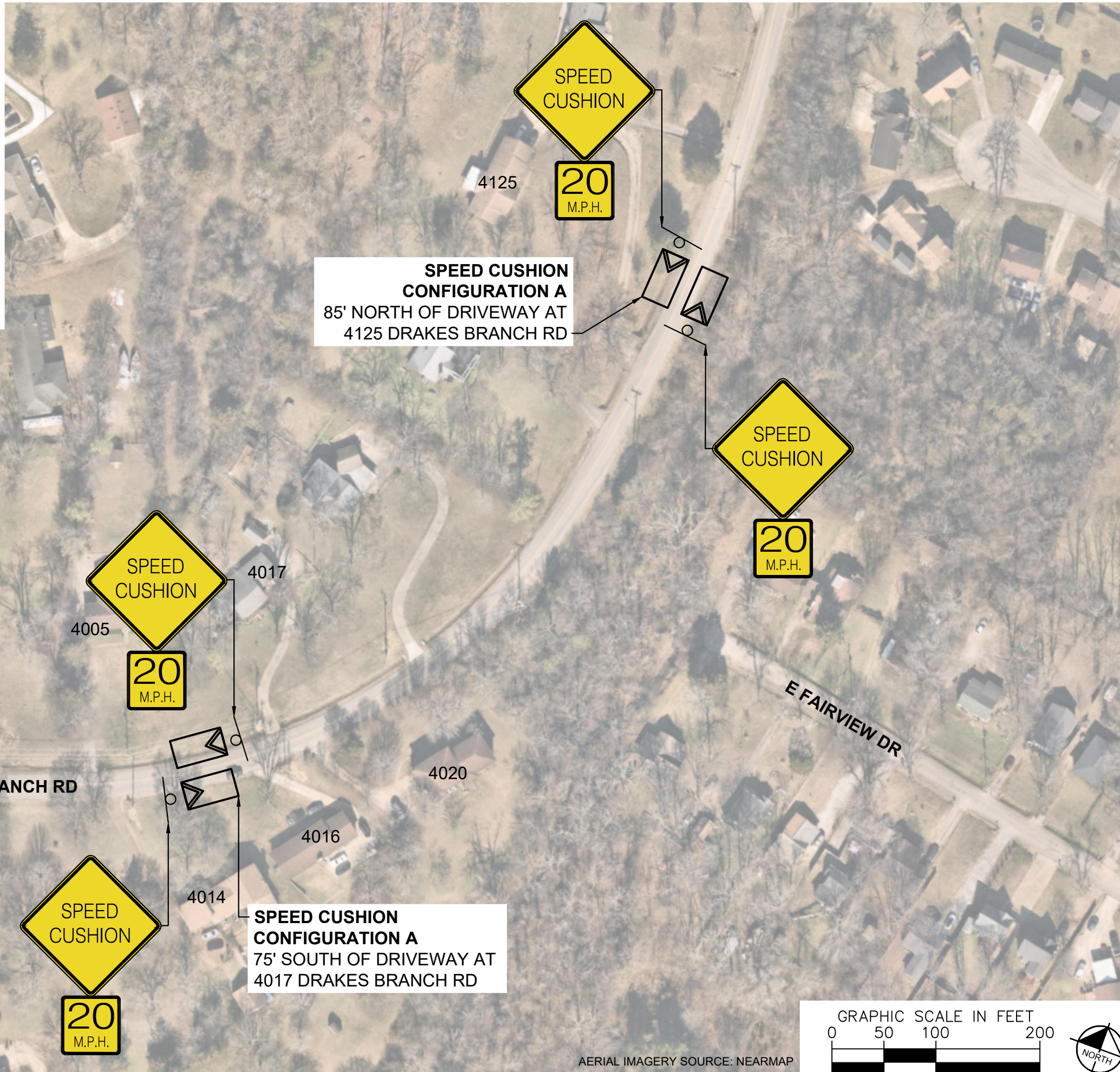
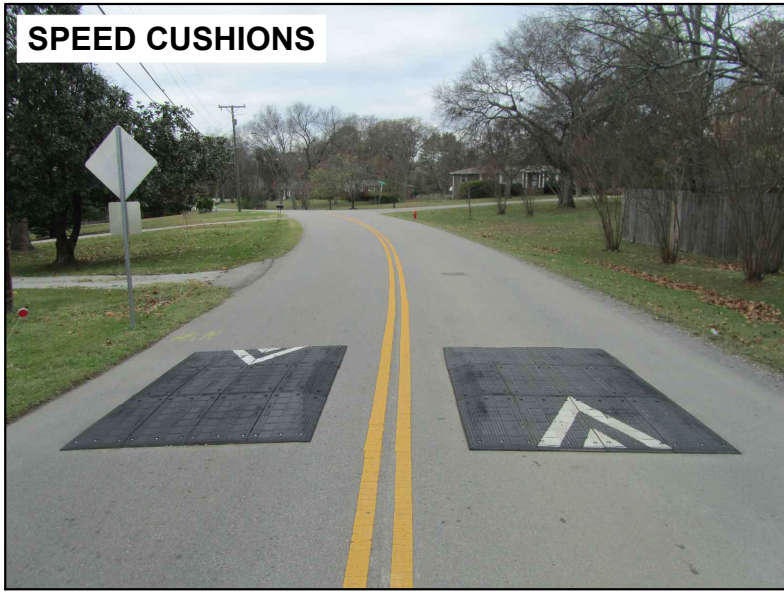
DRAKES BRANCH ROAD
TRAFFIC CALMING
NASHVILLE, TN



DESIGNED BY: ALB
DRAWN BY: JCB
CHECKED BY: NDOT
DATE: 7/30/2024
KIMLEY-HORN PROJECT NO. 11890051

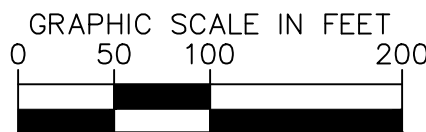
CONCEPT
SHEET NUMBER
03

SPEED CUSHIONS



SPEED CUSHION CONFIGURATION A
85' NORTH OF DRIVEWAY AT
4125 DRAKES BRANCH RD

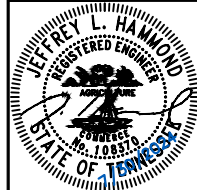
SPEED CUSHION CONFIGURATION A
75' SOUTH OF DRIVEWAY AT
4017 DRAKES BRANCH RD



AERIAL IMAGERY SOURCE: NEARMAP



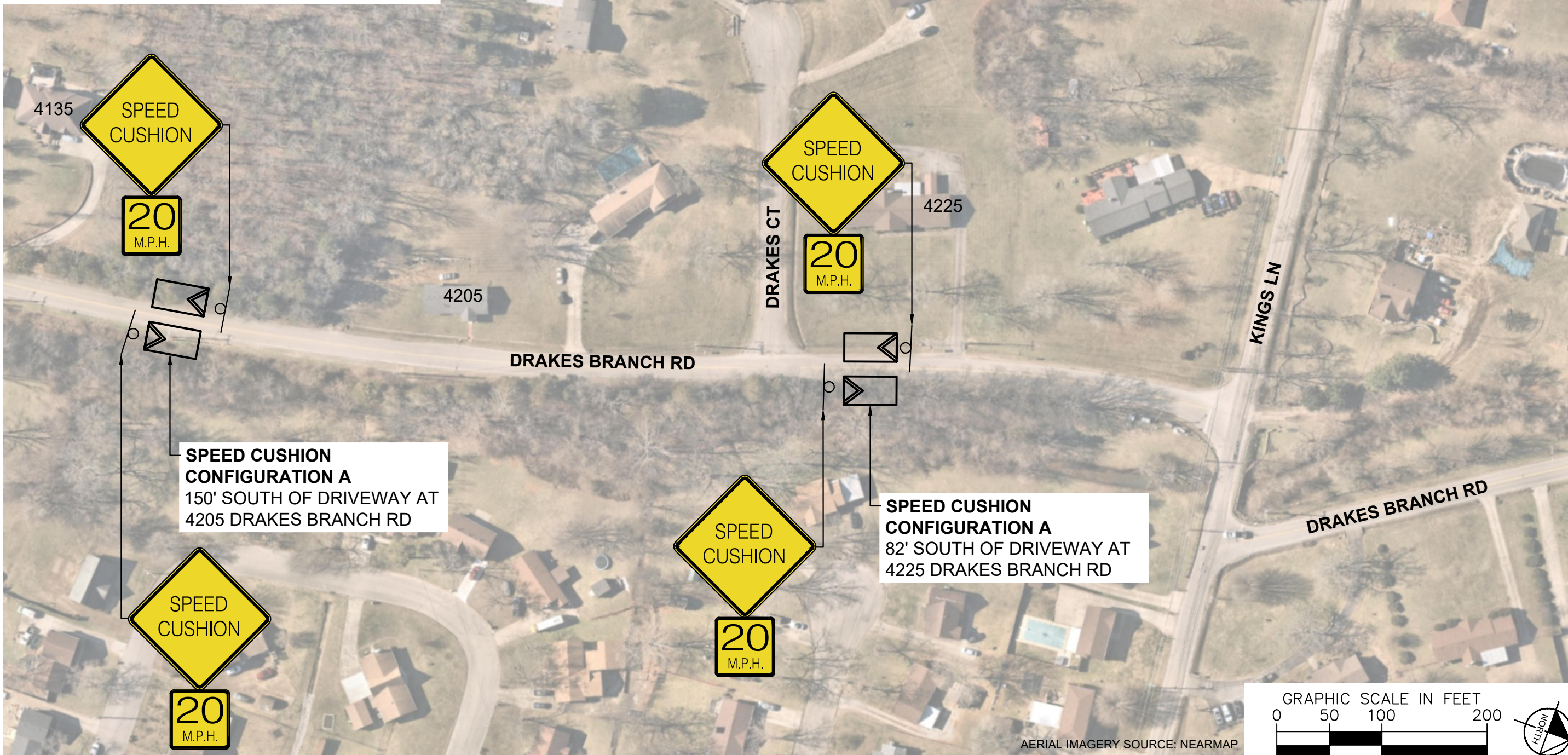
DRAKES BRANCH ROAD
TRAFFIC CALMING
NASHVILLE, TN



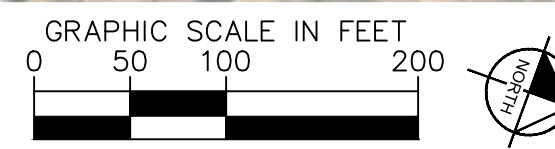
DESIGNED BY: ALB
DRAWN BY: JCB
CHECKED BY: NDOT
DATE: 7/30/2024
KIMLEY-HORN PROJECT NO. 118800051

CONCEPT
SHEET NUMBER
04

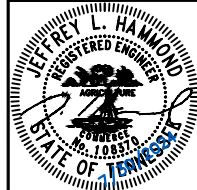
SPEED CUSHIONS



AERIAL IMAGERY SOURCE: NEARMAP



**DRAKES BRANCH ROAD
TRAFFIC CALMING**
NASHVILLE, TN



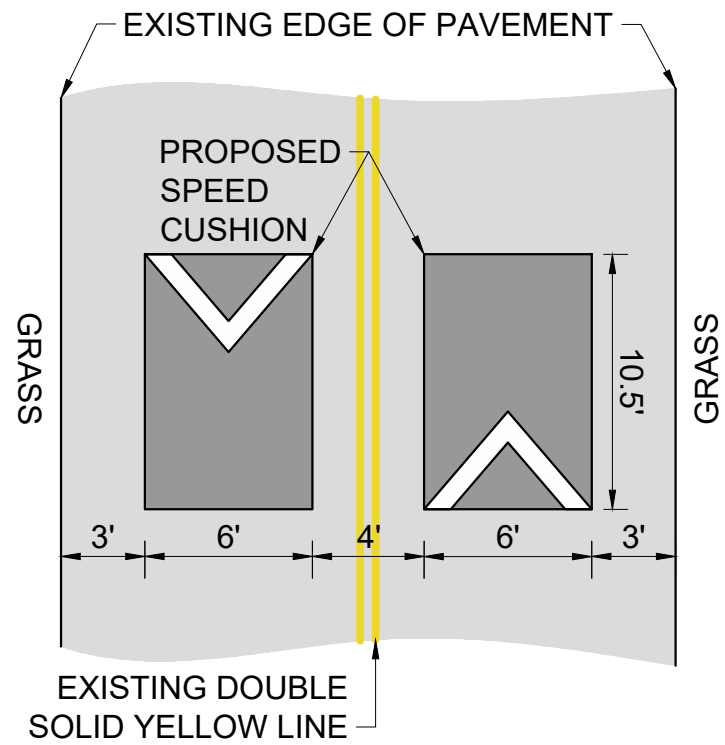
DESIGNED BY:	ALB
DRAWN BY:	JCB
CHECKED BY:	NDOT
DATE:	7/30/2024
KIMLEY-HORN PROJECT NO.:	118800051

CONCEPT
SHEET NUMBER
05

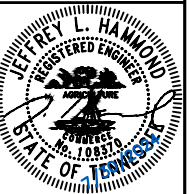
This document, together with the concepts and designs presented herein, is intended only for the specific purpose and client for which it was prepared. Reuse of and improper reliance on this document without written authorization and adaptation by Kimley-Horn and Associates, Inc. shall be without liability to Kimley-Horn and Associates, Inc.

CONFIGURATION A

PAVEMENT WIDTH: 22'



DRAKES BRANCH ROAD
TRAFFIC CALMING
NASHVILLE, TN



DESIGNED BY: ALB
DRAWN BY: JCB
CHECKED BY: NDOT
DATE: 7/30/2024
KIMLEY-HORN PROJECT NO. 118800051

DETAIL

SHEET NUMBER
06

This document, together with the concepts and designs presented herein, as an instrument of service, is intended only for the specific purpose and client for which it was prepared. Reuse of and improper reliance on this document without written authorization and adaptation by Kimley-Horn and Associates, Inc. shall be without liability to Kimley-Horn and Associates, Inc.