

Index Of Sheets

SHEET NO.	DESCRIPTION
1	TITLE SHEET
2A-2B.....	PROPERTY TABLE (OMITTED)
3-17.....	PROPOSED LAYOUTS

PRELIMINARY PLAN SET

PIN 128886.00 EAST NASHVILLE SPOKES

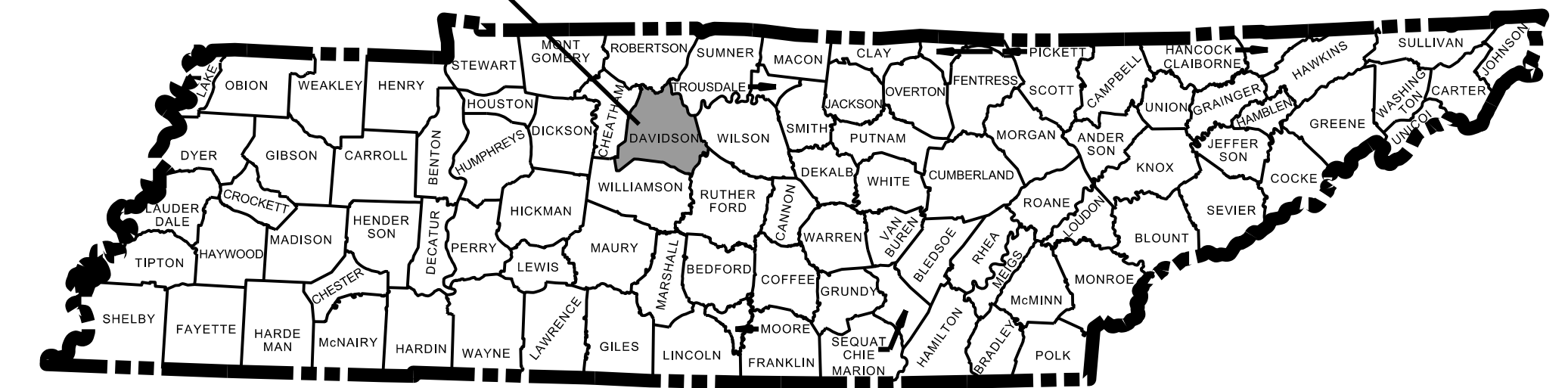
DAVIDSON COUNTY NASHVILLE, TN

PRELIMINARY PLAN SET: 7/30/2024

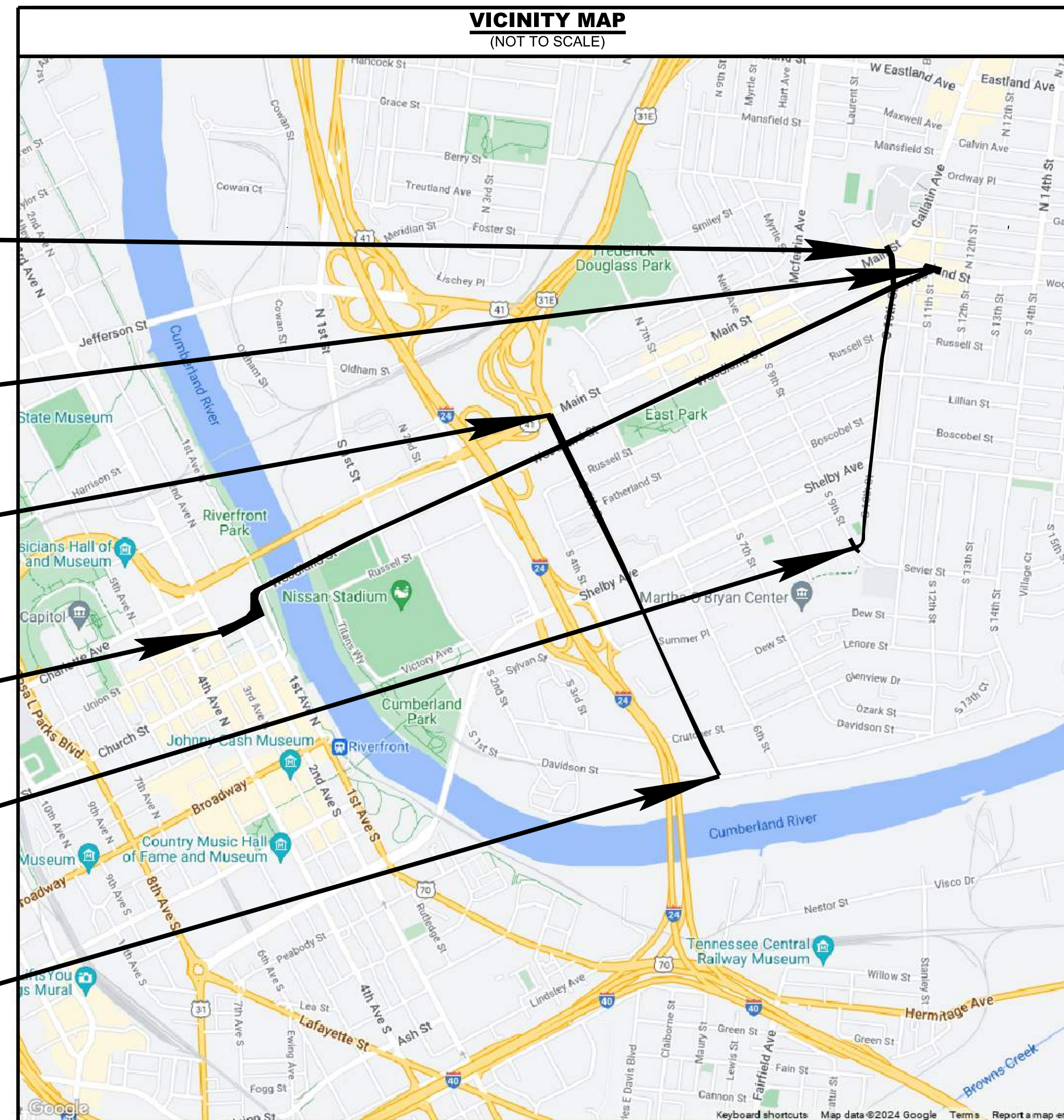
TENN.	YEAR	SHEET NO.
	2024	1
FED. AID PROJECT NO.	STP-M-9312(122)	
STATE PROJ. NO.	19LPLM-F0-188	

LOCALLY MANAGED PROJECT
LOCALLY LET PROJECT

PROJECT LOCATION



- PROJECT BEGIN (S 10TH ST.)
STA. 164+38.00 EAST NASHVILLE SPOKES
- PROJECT END (WOODLAND ST.)
STA. 107+14.00 EAST NASHVILLE SPOKES
- PROJECT BEGIN (S 5TH ST.)
STA. 111+93.00 EAST NASHVILLE SPOKES
- PROJECT BEGIN (UNION ST./WOODLAND ST.)
STA. 9+00.00 EAST NASHVILLE SPOKES
- PROJECT END (S 10TH ST.)
STA. 200+00.00 EAST NASHVILLE SPOKES
- PROJECT END (S 5TH ST.)
STA. 160+00.00 EAST NASHVILLE SPOKES



PROJECT DETAILS	
TDOT PIN #:	128886.00
STATE PROJECT #:	19LPLM-F0-188
DESCRIPTION:	EAST NASHVILLE SPOKES
PROJECT BEGINNING:	N: 667907.74 E: 1738710.45
PROJECT ENDING:	N: 672099.18 E: 1747385.14
SURVEY DATE:	MAY 26TH, 2023
TRAFFIC DATA	
WOODLAND STREET:	AADT (2023): 9,346 SPEED: 35 MPH
5TH STREET NORTH:	AADT (2023): 15,128 SPEED: 30 MPH
10TH STREET NORTH:	AADT (2023): 6,729 SPEED: 25 MPH
COORDINATE VALUES ARE NAD 83 (2011), ARE DATUM ADJUSTED BY THE FACTOR OF 1.00000, AND TIED TO TGRN. ALL ELEVATIONS ARE REFERENCED TO THE NAVD 1988 USING THE GEOID 12B MODEL, OBTAINED ON 11-23-2022.	
NO EXCLUSIONS	
CITY MAYOR	
FREDDIE O'CONNELL EMAIL: MAYOR@NASHVILLE.GOV PHONE: (615) 862-6000	

PROJECT LENGTH
WOODLAND STREET - 1.86 MILES
5TH STREET - 0.91 MILES
10TH STREET - 0.67 MILES
TOTAL PROJECT LENGTH - 3.44 MILES

SPECIAL NOTES

PROPOSALS MAY BE REJECTED IF ANY OF THE UNIT PRICES CONTAINED THEREIN ARE OBVIOUSLY UNBALANCED, EITHER EXCESSIVE OR BELOW THE REASONABLE COST ANALYSIS VALUE.

THIS PROJECT TO BE CONSTRUCTED UNDER THE STANDARD SPECIFICATIONS OF THE TENNESSEE DEPARTMENT OF TRANSPORTATION DATED JANUARY 1, 2021 AND ADDITIONAL SPECIFICATIONS AND SPECIAL PROVISIONS CONTAINED IN THE PLANS AND IN THE PROPOSAL CONTRACT.

DESIGNED BY : KIMLEY-HORN & ASSOCIATES, INC.
DESIGNER : JACOB MCGHEE, P.E. CHECKED BY DAVID CORLEY, P.E.

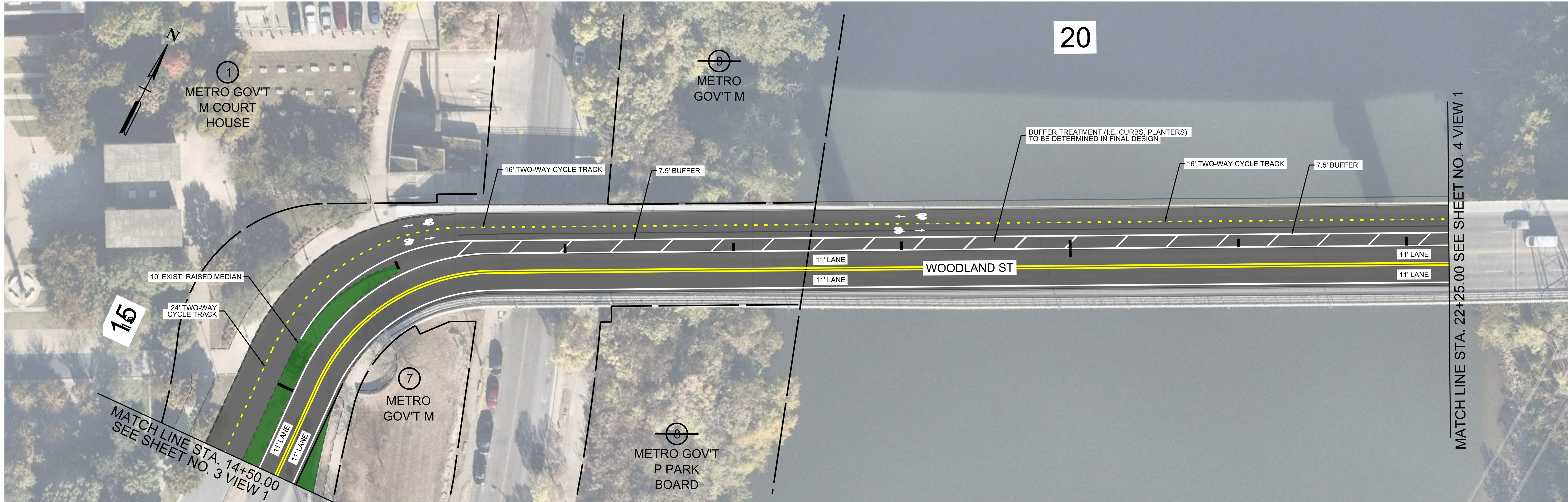
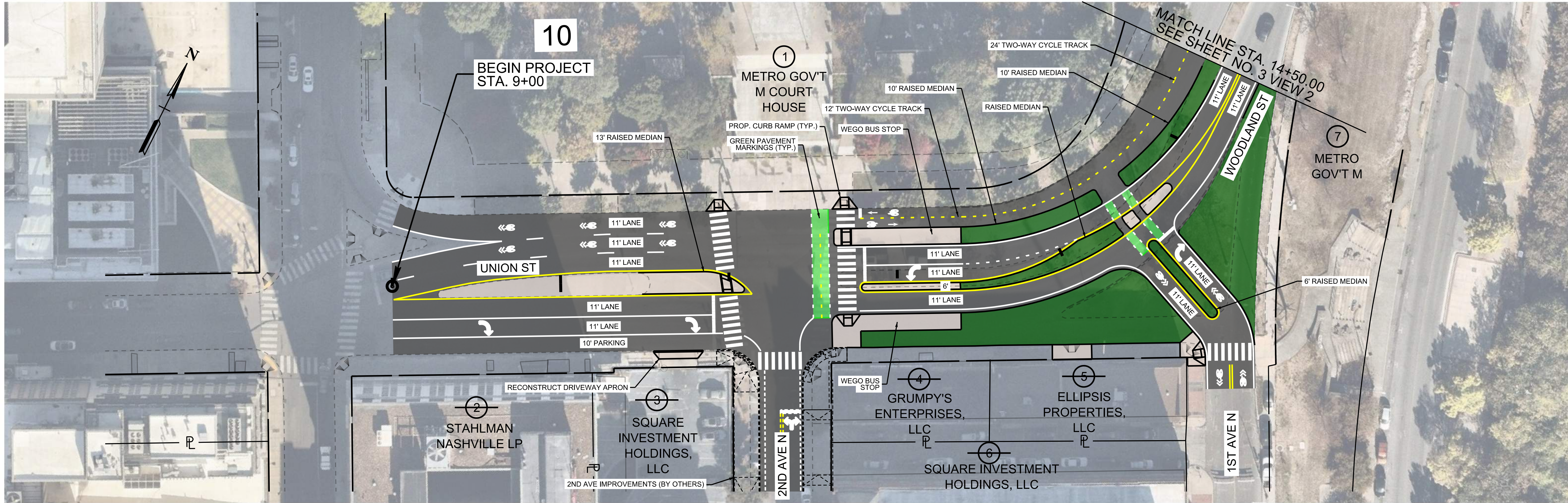
PLANS PREPARED BY



10 LEA AVENUE, SUITE 400, NASHVILLE, TN 37210
MAIN: 615.564.2701 | www.kimley-horn.com
@ 2024 Kimley-Horn and Associates, Inc.

LOCAL GOVERNMENT APPROVAL	PRELIMINARY PLANS
APPROVED: DATE:	

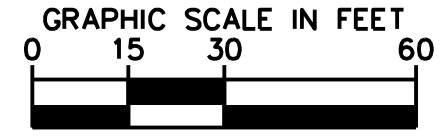
This document, together with the concepts and designs presented herein, is intended only for the specific purpose and client for which it was prepared. Reuse of and improper reliance on this document without written authorization and adaptation by Kimley-Horn and Associates, Inc. shall be without liability to Kimley-Horn and Associates, Inc.



LEGEND

	CONCRETE		ASPHALT
	LANDSCAPING		

PRELIMINARY PLANS



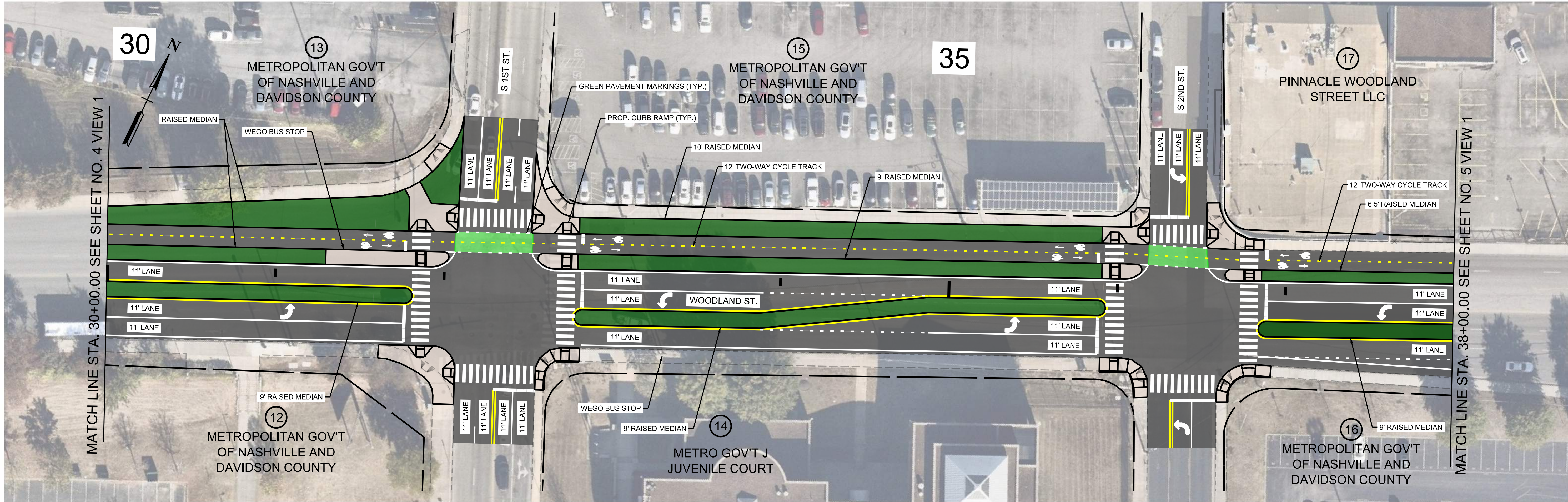
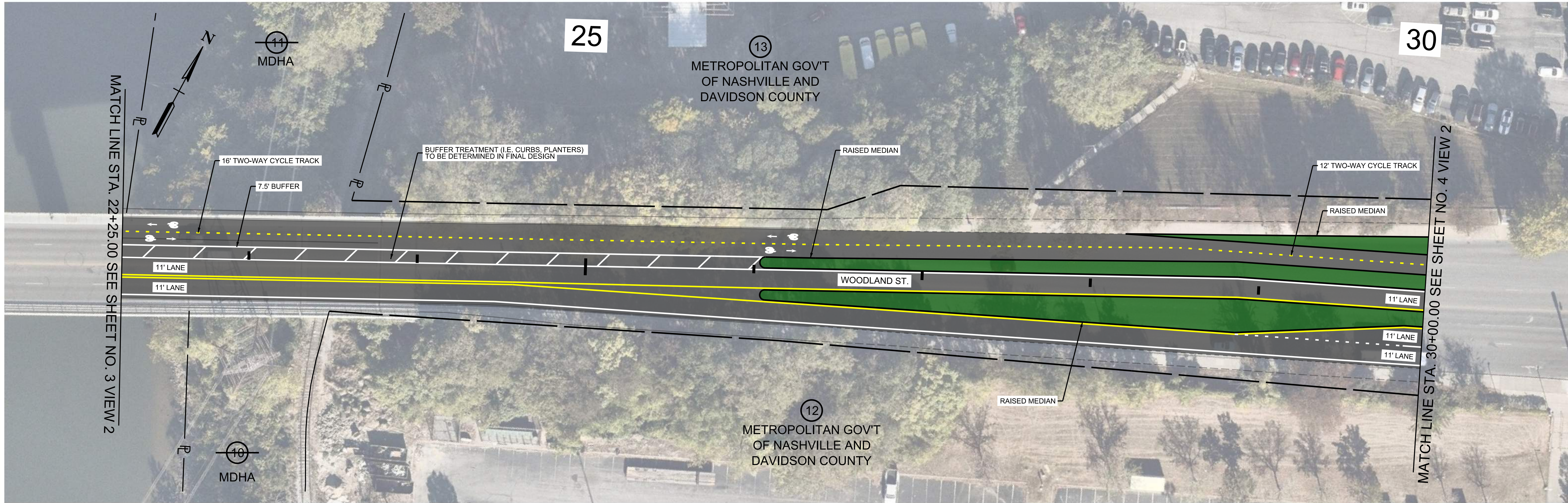
EAST NASHVILLE SPOKES
 PIN 128886.00
 NASHVILLE, TN

DRAFT PRELIMINARY PLANS
 FOR REVIEW ONLY



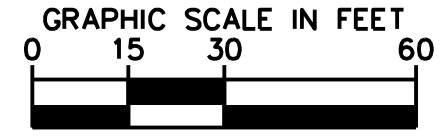
DESIGNED BY:	
DRAWN BY:	
CHECKED BY:	
DATE:	
KIMLEY-HORN PROJECT NO.	118900300
FEDERAL PROJECT NO.	STP-M-9312(122)
PROPOSED LAYOUT	
SHEET NUMBER	3

This document, together with the concepts and designs presented herein, is intended only for the specific purpose and client for which it was prepared. Reuse of and improper reliance on this document without written authorization and adaptation by Kimley-Horn and Associates, Inc. shall be without liability to Kimley-Horn and Associates, Inc.



LEGEND	
	CONCRETE
	ASPHALT
	LANDSCAPING

PRELIMINARY PLANS



EAST NASHVILLE SPOKES
 PIN 128886.00
 NASHVILLE, TN

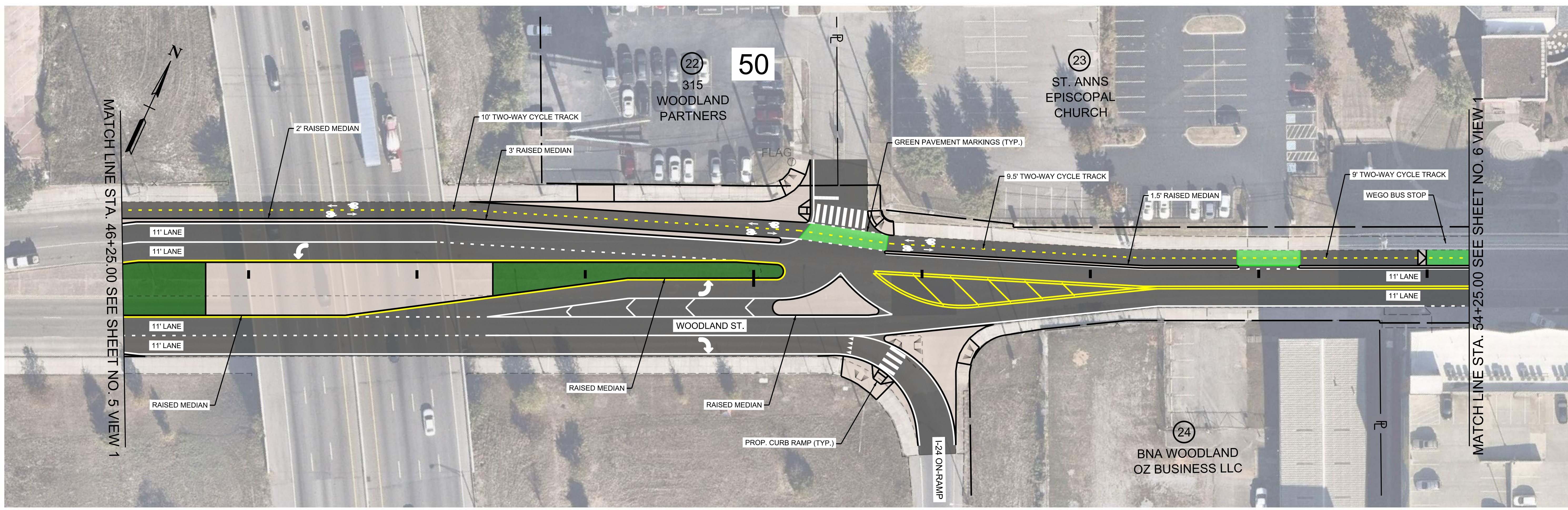
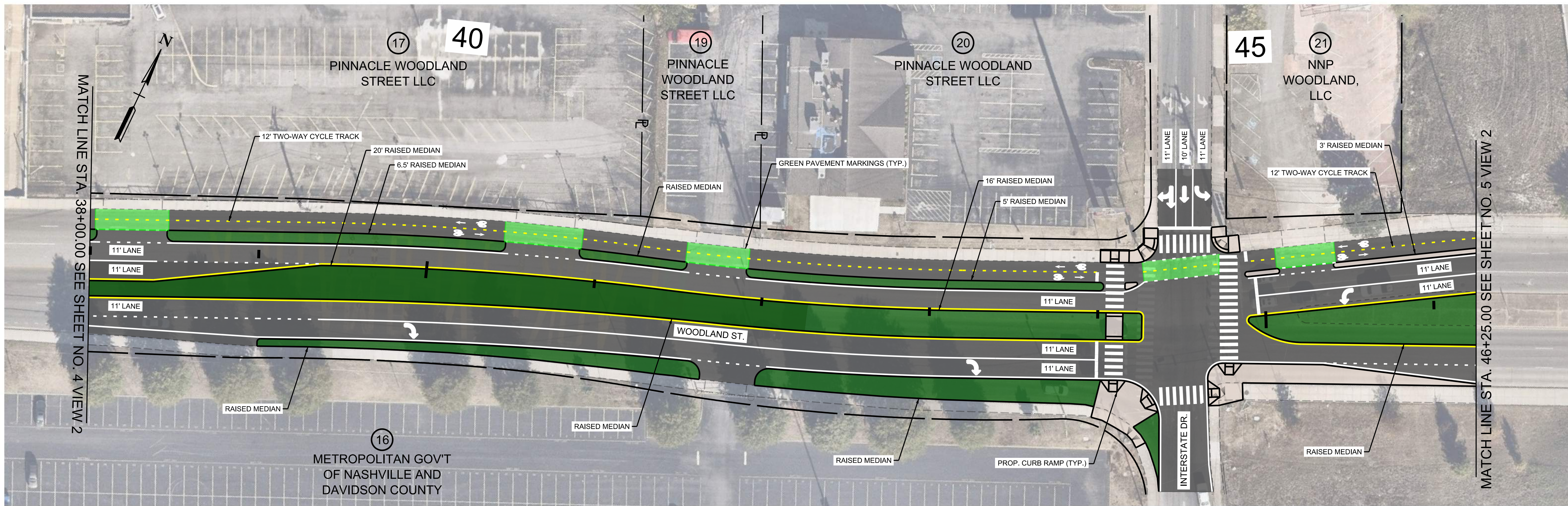
DRAFT PRELIMINARY PLANS
 FOR REVIEW ONLY



DESIGNED BY:
 DRAWN BY:
 CHECKED BY:
 DATE:
 KIMLEY-HORN PROJECT NO. 118900300
 FEDERAL PROJECT NO. STP-M-9312(122)

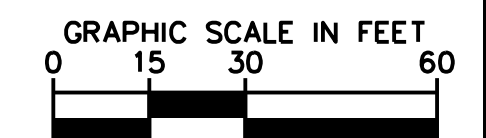
PROPOSED LAYOUT
 SHEET NUMBER
4

This document, together with the concepts and designs presented herein, as an instrument of service, is intended only for the specific purpose and client for which it was prepared. Reuse of and improper reliance on this document without written authorization and adaptation by Kimley-Horn and Associates, Inc. shall be without liability to Kimley-Horn and Associates, Inc.



LEGEND	
 CONCRETE	 ASPHALT
 LANDSCAPING	

**PRELIMINARY
PLANS**



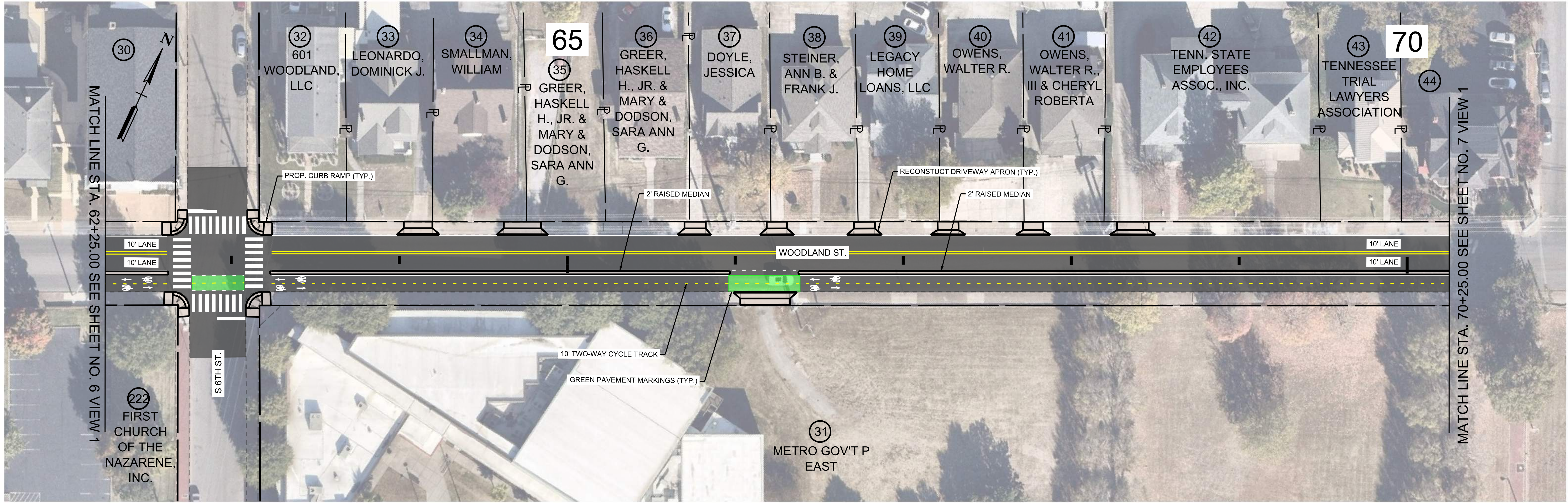
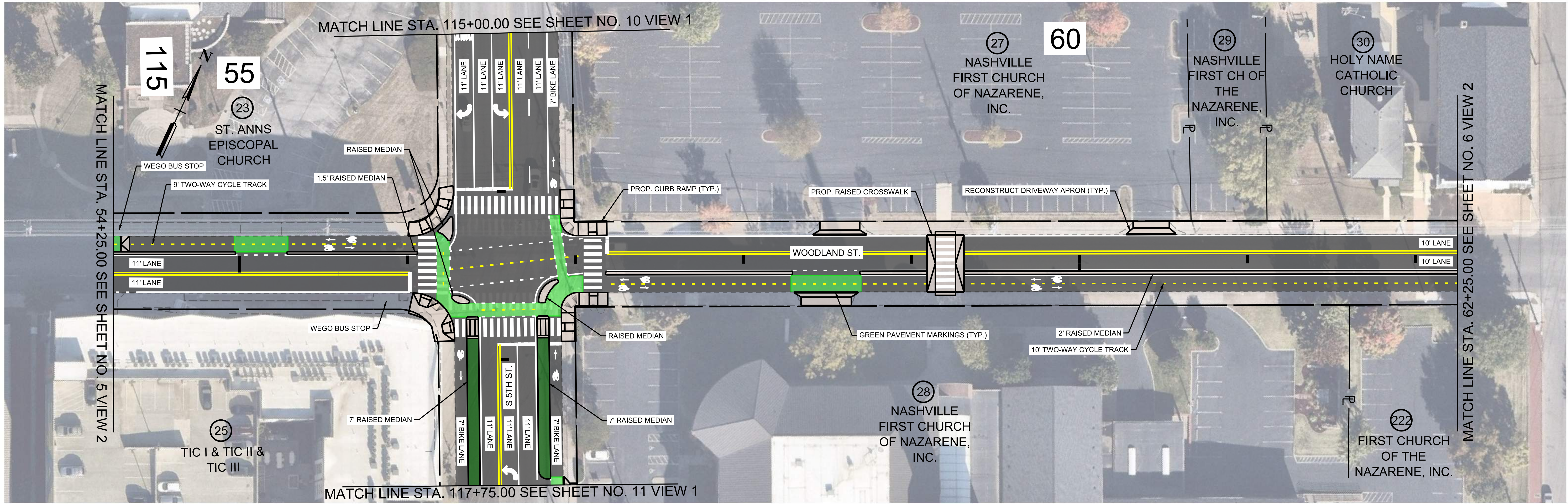
EAST NASHVILLE SPOKES
 PIN 128886.00
 NASHVILLE, TN

**DRAFT
PRELIMINARY
PLANS**
 FOR REVIEW ONLY



DESIGNED BY:	
DRAWN BY:	
CHECKED BY:	
DATE:	
KIMLEY-HORN PROJECT NO.	118900300
FEDERAL PROJECT NO.	STP-M-9312(122)
PROPOSED LAYOUT	
SHEET NUMBER	5

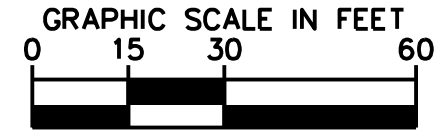
This document, together with the concepts and designs presented herein, is intended only for the specific purpose and client for which it was prepared. Reuse of and improper reliance on this document without written authorization and adaptation by Kimley-Horn and Associates, Inc. shall be without liability to Kimley-Horn and Associates, Inc.



LEGEND	
	CONCRETE
	ASPHALT
	LANDSCAPING

PROPERTY OWNER LEGEND	
(30)	HOLY NAME CATHOLIC CHURCH
(44)	631 WOODLAND HOLDING COMPANY, LLC

PRELIMINARY PLANS



NDOT

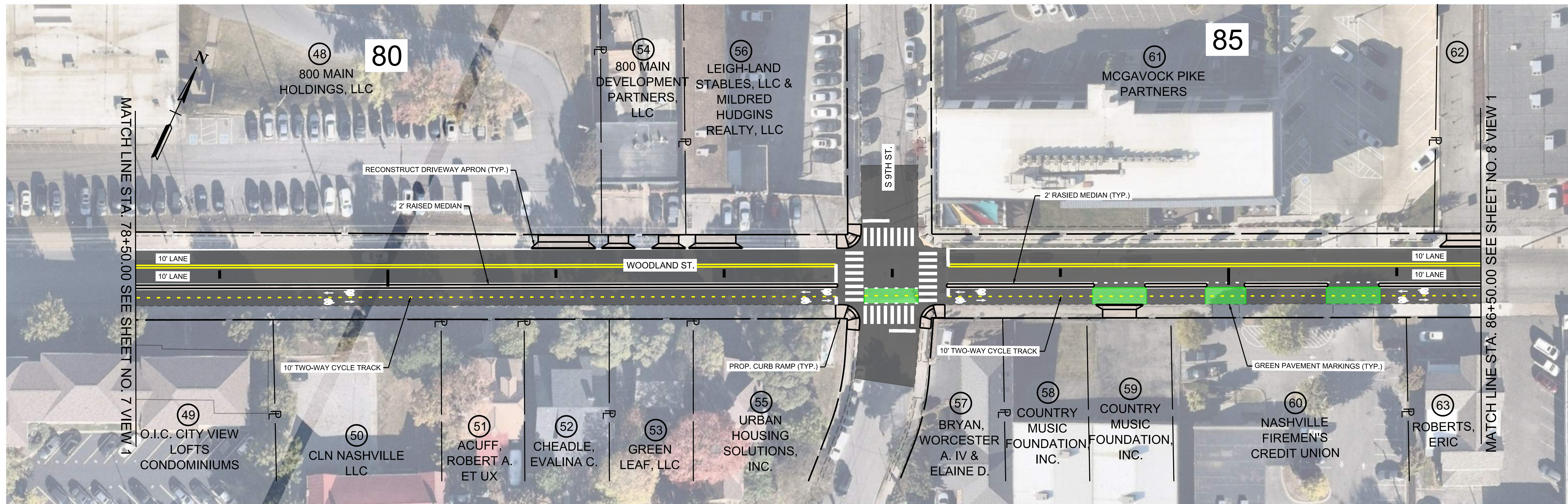
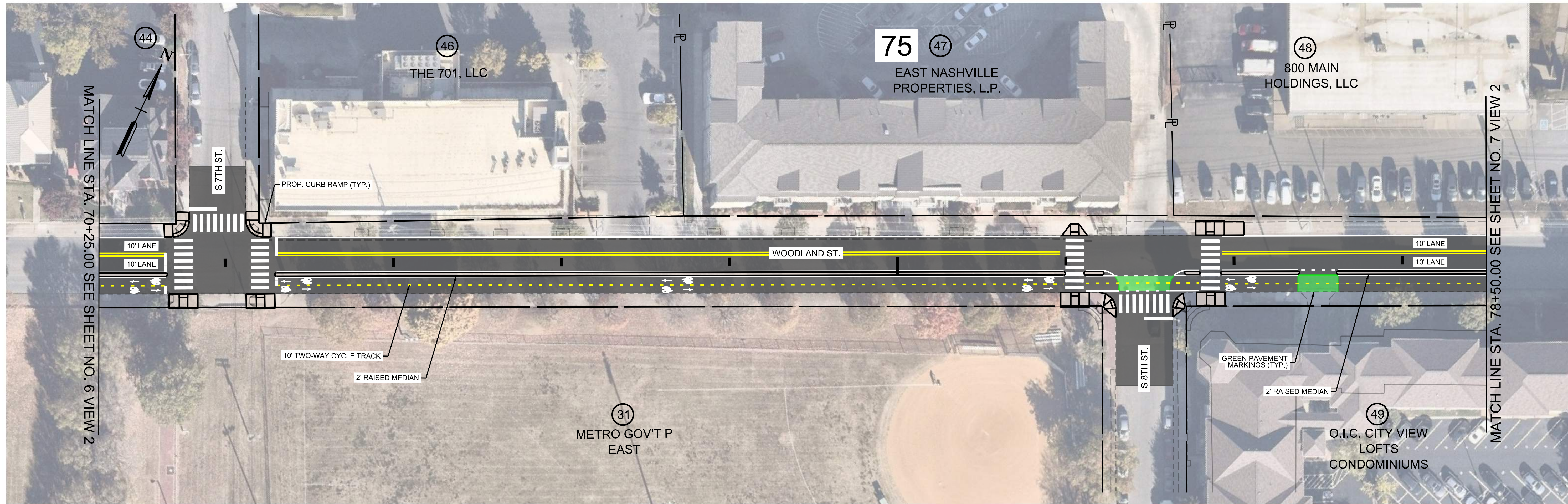
EAST NASHVILLE SPOKES
PIN 128886.00
NASHVILLE, TN

**DRAFT
PRELIMINARY
PLANS
FOR REVIEW ONLY**

Kimley»Horn

DESIGNED BY:	
DRAWN BY:	
CHECKED BY:	
DATE:	
KIMLEY-HORN PROJECT NO.	118900300
FEDERAL PROJECT NO.	STP-M-9312(122)
PROPOSED LAYOUT	
SHEET NUMBER	6

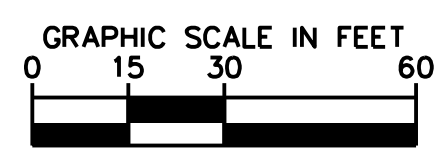
This document, together with the concepts and designs presented herein, is intended only for the specific purpose and client for which it was prepared. Reuse of and improper reliance on this document without written authorization and adaptation by Kimley-Horn and Associates, Inc. shall be without liability to Kimley-Horn and Associates, Inc.



LEGEND	
	CONCRETE
	ASPHALT
	LANDSCAPING

PROPERTY OWNER LEGEND	
44	631 WOODLAND HOLDING COMPANY, LLC
62	H&H INVESTMENTS, LTD.

PRELIMINARY PLANS



NDOT

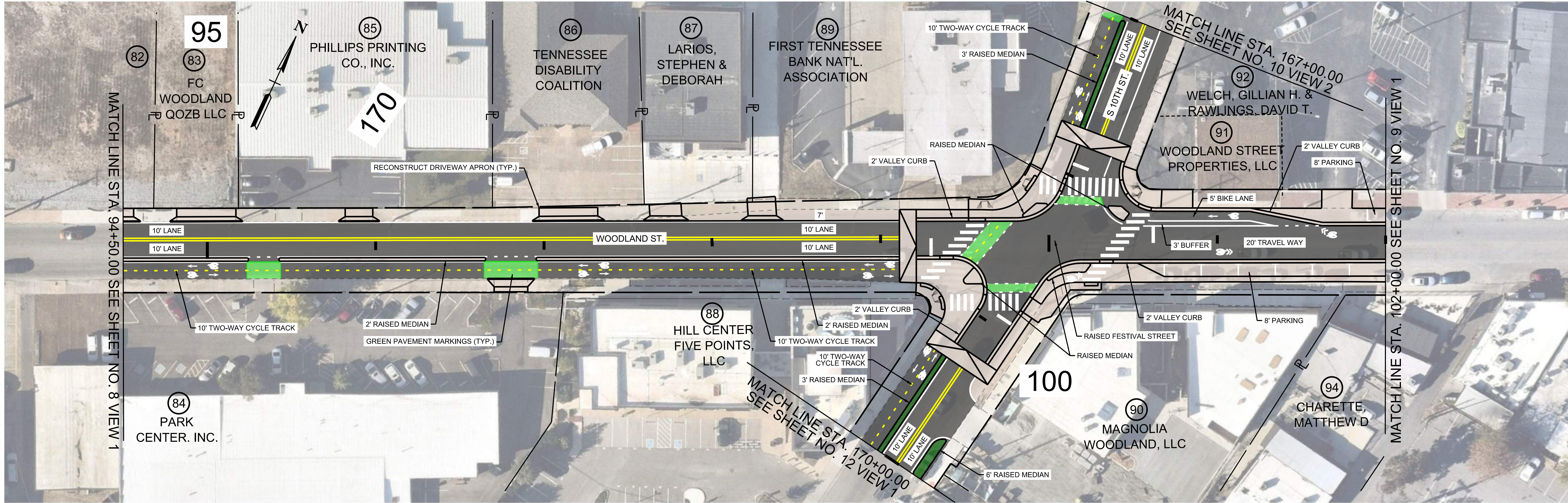
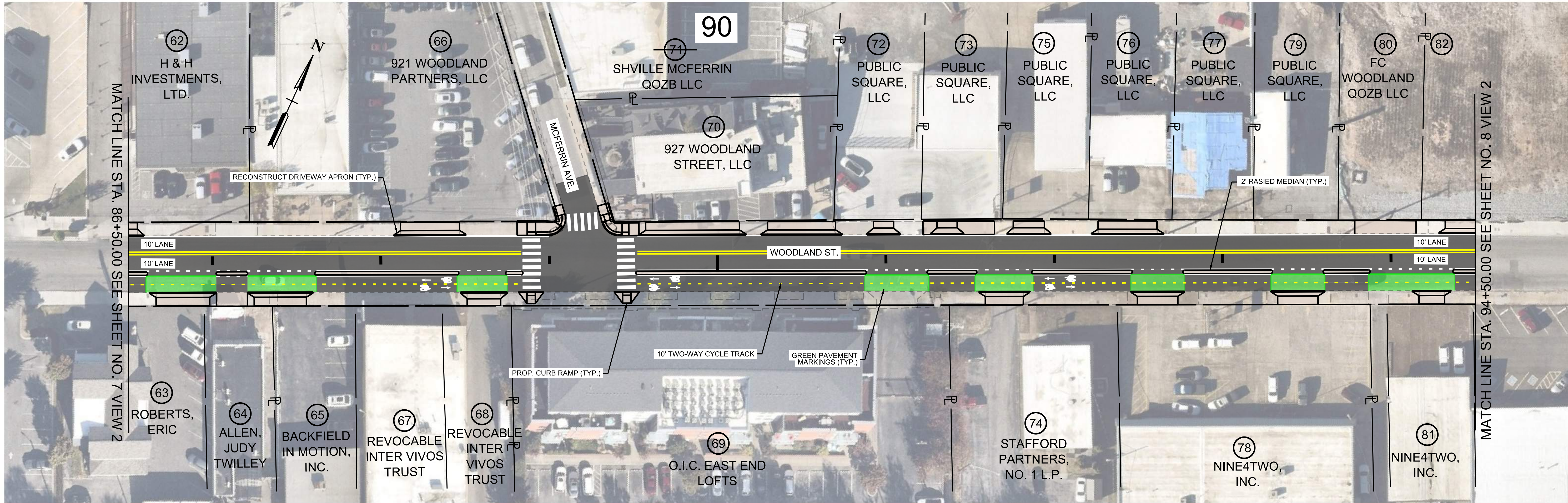
EAST NASHVILLE SPOKES
PIN 128886.00
NASHVILLE, TN

DRAFT PRELIMINARY PLANS FOR REVIEW ONLY

Kimley-Horn

DESIGNED BY:	
DRAWN BY:	
CHECKED BY:	
DATE:	
KIMLEY-HORN PROJECT NO.	118900300
FEDERAL PROJECT NO.	STP-M-9312(122)
PROPOSED LAYOUT	
SHEET NUMBER	7

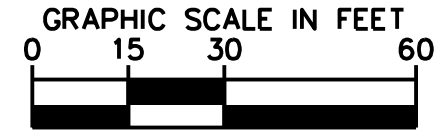
This document, together with the concepts and designs presented herein, is intended only for the specific purpose and client for which it was prepared. Reuse of and improper reliance on this document without written authorization and adaptation by Kimley-Horn and Associates, Inc. shall be without liability to Kimley-Horn and Associates, Inc.



LEGEND	
	CONCRETE
	ASPHALT
	LANDSCAPING

PROPERTY OWNER LEGEND	
	FC WOODLAND QOZB LLC

PRELIMINARY PLANS



NDOT

EAST NASHVILLE SPOKES
PIN 128886.00
NASHVILLE, TN

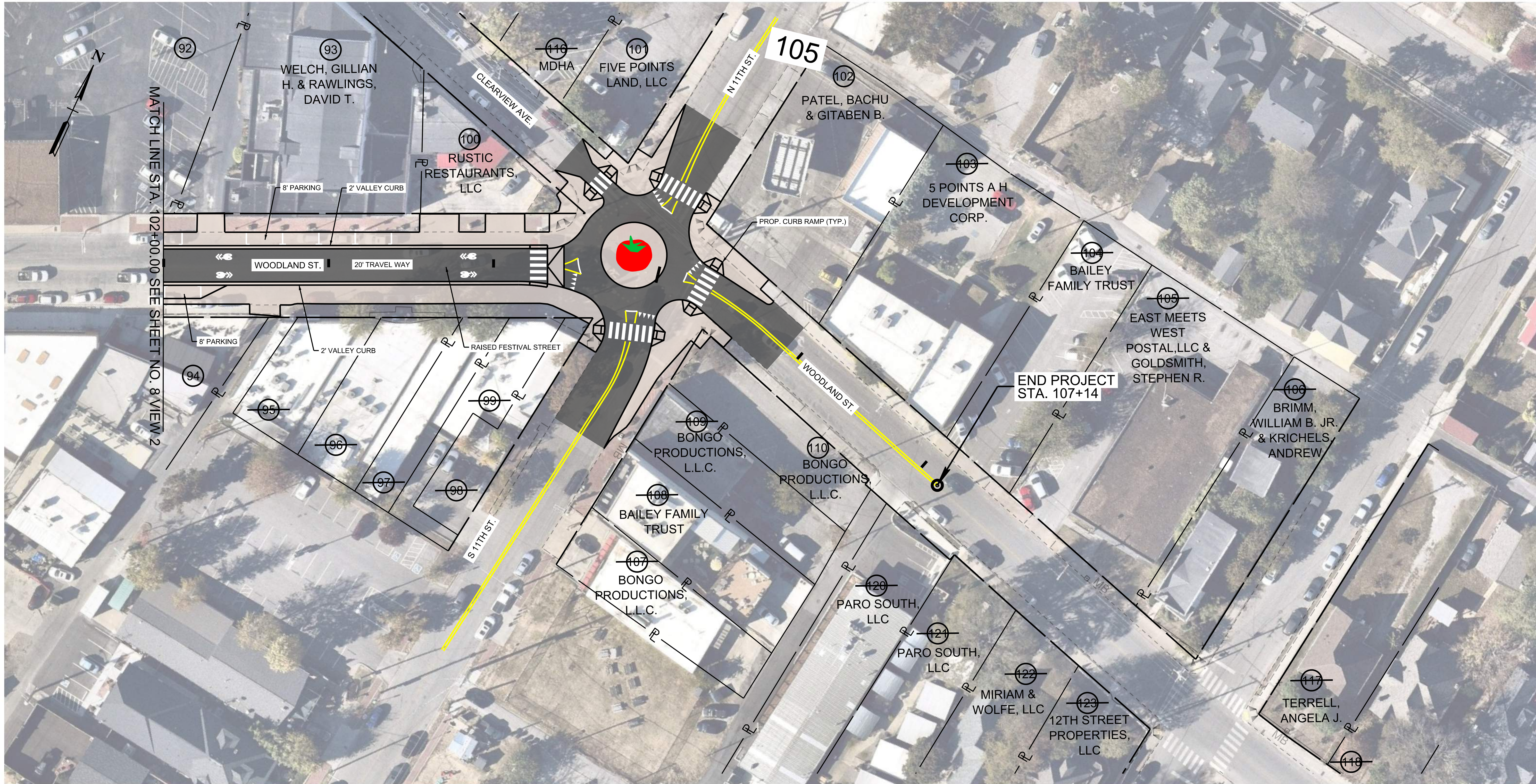
DRAFT PRELIMINARY PLANS FOR REVIEW ONLY

Kimley-Horn

DESIGNED BY:
DRAWN BY:
CHECKED BY:
DATE:
KIMLEY-HORN PROJECT NO. 118900300
FEDERAL PROJECT NO. STP-M-9312(122)

PROPOSED LAYOUT
SHEET NUMBER
8

This document, together with the concepts and designs presented herein, is intended only for the specific purpose and client for which it was prepared. Reuse of and improper reliance on this document without written authorization and adaptation by Kimley-Horn and Associates, Inc. shall be without liability to Kimley-Horn and Associates, Inc.



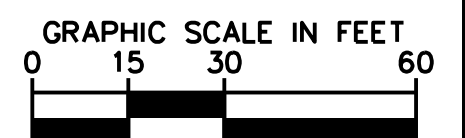
MATCH LINE STA. 102+00.00 SEE SHEET NO. 8 VIEW 2

END PROJECT STA. 107+14

LEGEND	
	CONCRETE
	ASPHALT
	LANDSCAPING

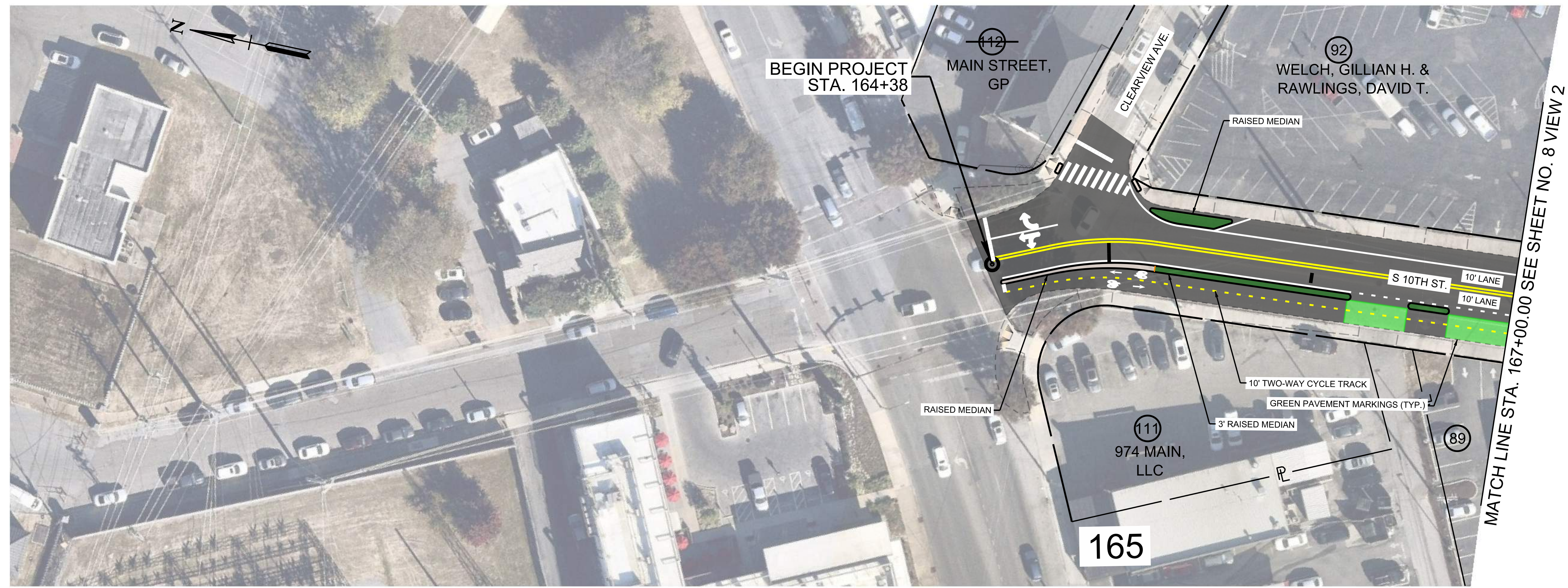
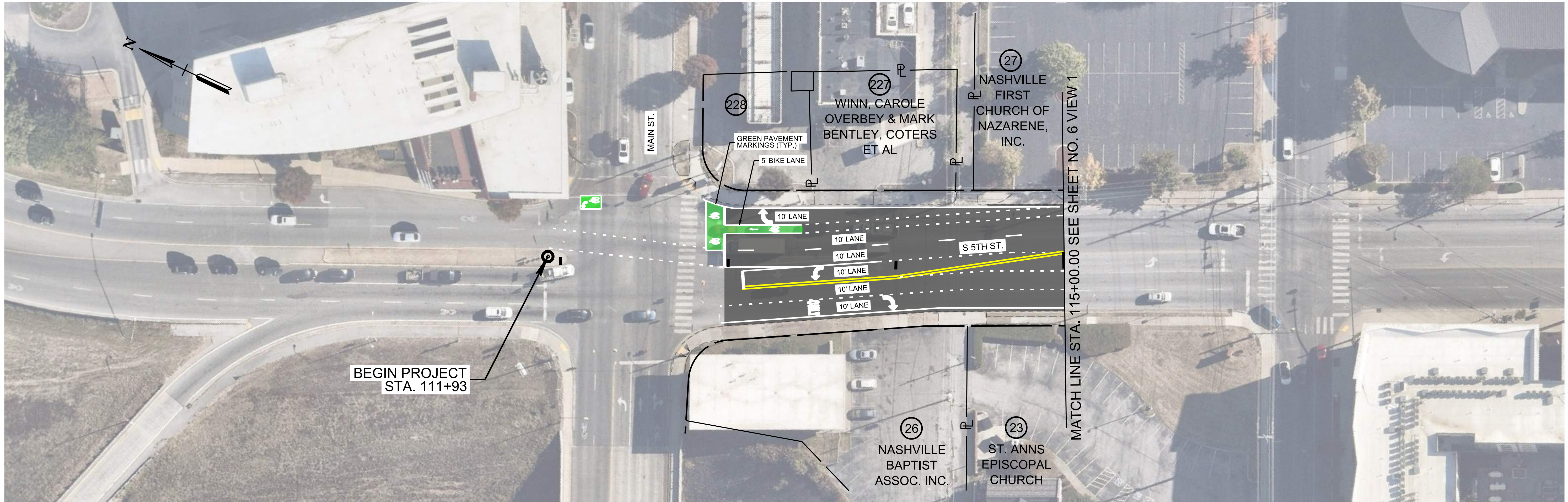
PROPERTY OWNER LEGEND	
92	WELCH, GILLIAN H. & RAWLINGS, DAVID T.
94	CHARETTE, MATTHEW D.
95	WILSON, EMILY, L. & LEHNING, H.W., JR, ETAL
96	GRASS HILL PROPERTIES LLC
97	CLINARD, W. T. ET UX
98	THIRD CIRCLE, LLC
99	THIRD CIRCLE, LLC
118	FRANKLIN, MICHAEL J. & ADRIENNE T.

PRELIMINARY PLANS



DESIGNED BY:	
DRAWN BY:	
CHECKED BY:	
DATE:	
KIMLEY-HORN PROJECT NO.	118900300
FEDERAL PROJECT NO.	STP-M-9312(122)
PROPOSED LAYOUT	
SHEET NUMBER	9

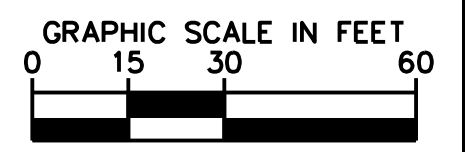
This document, together with the concepts and designs presented herein, as an instrument of service, is intended only for the specific purpose and client for which it was prepared. Reuse of and improper reliance on this document without written authorization and adaptation by Kimley-Horn and Associates, Inc. shall be without liability to Kimley-Horn and Associates, Inc.



LEGEND	
	CONCRETE
	ASPHALT
	LANDSCAPING

PROPERTY OWNER LEGEND	
	WINN, CAROLE OVERBEY & MARK BENTLEY, COTERS ET AL
	FIRST TENNESSEE BANK NAT'L. ASSOCIATION

**PRELIMINARY
PLANS**



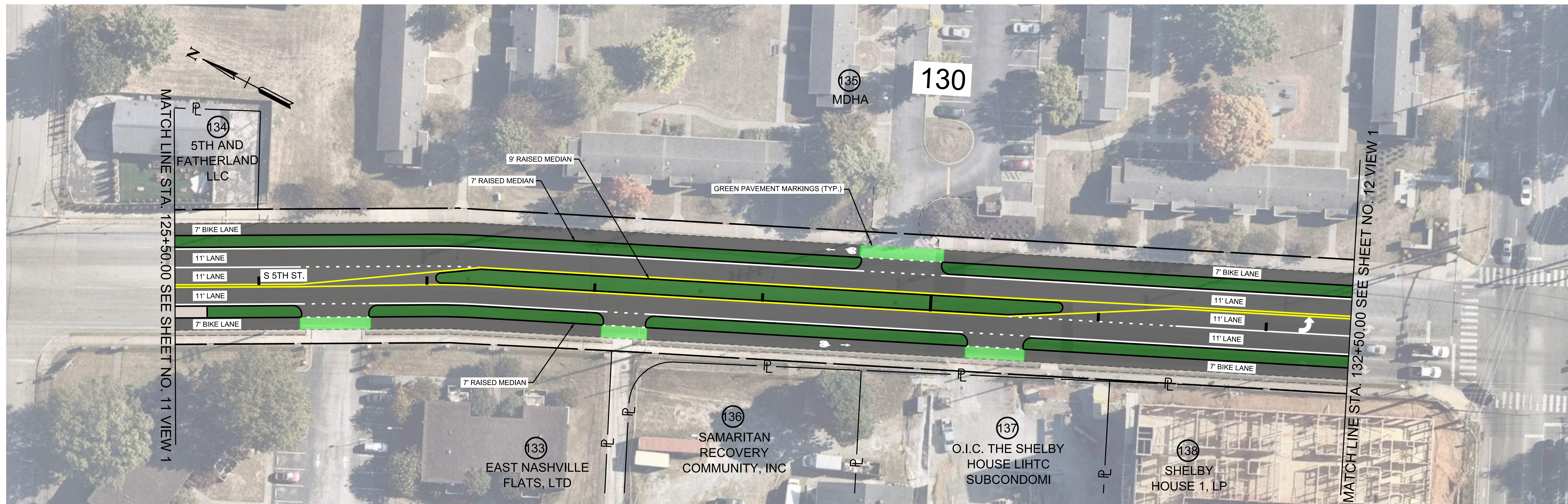
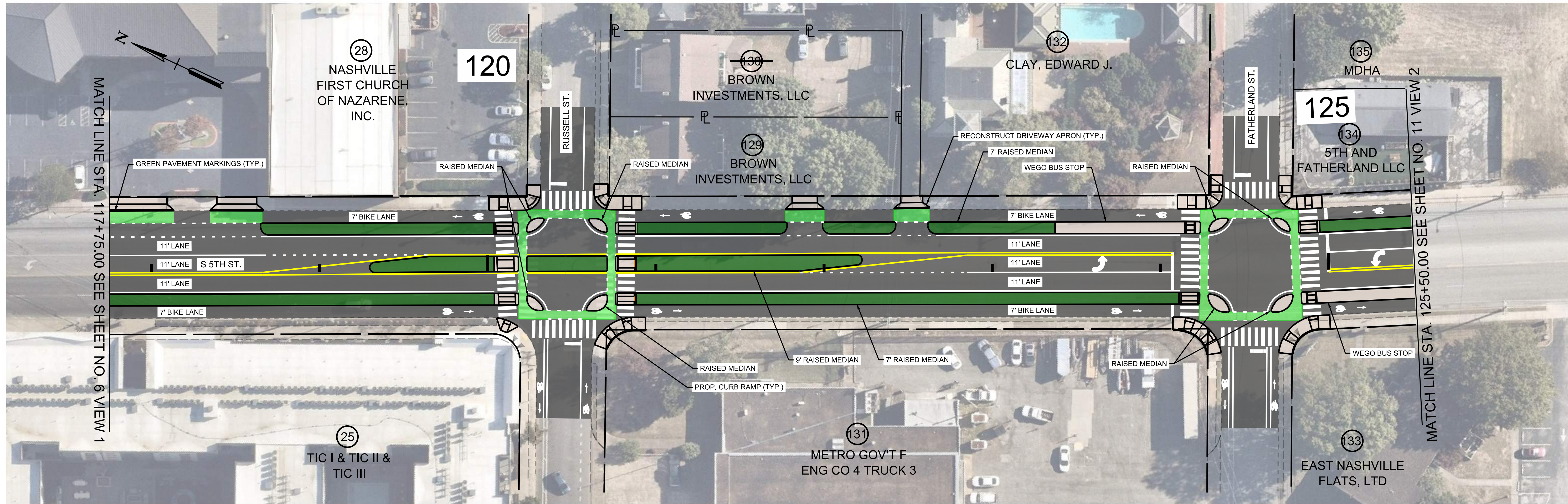
EAST NASHVILLE SPOKES
PIN 128886.00
NASHVILLE, TN

**DRAFT
PRELIMINARY
PLANS**
FOR REVIEW ONLY



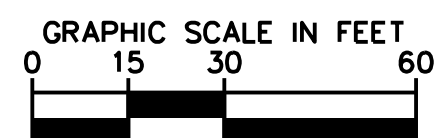
DESIGNED BY:	
DRAWN BY:	
CHECKED BY:	
DATE:	
KIMLEY-HORN PROJECT NO.	118900300
FEDERAL PROJECT NO.	STP-M-9312(122)
PROPOSED LAYOUT	
SHEET NUMBER	10

This document, together with the concepts and designs presented herein, is intended only for the specific purpose and client for which it was prepared. Reuse of and improper reliance on this document without written authorization and adaptation by Kimley-Horn and Associates, Inc. shall be without liability to Kimley-Horn and Associates, Inc.



LEGEND	
	CONCRETE
	ASPHALT
	LANDSCAPING

PRELIMINARY PLANS



NDOT

EAST NASHVILLE SPOKES
 PIN 128886.00
 NASHVILLE, TN

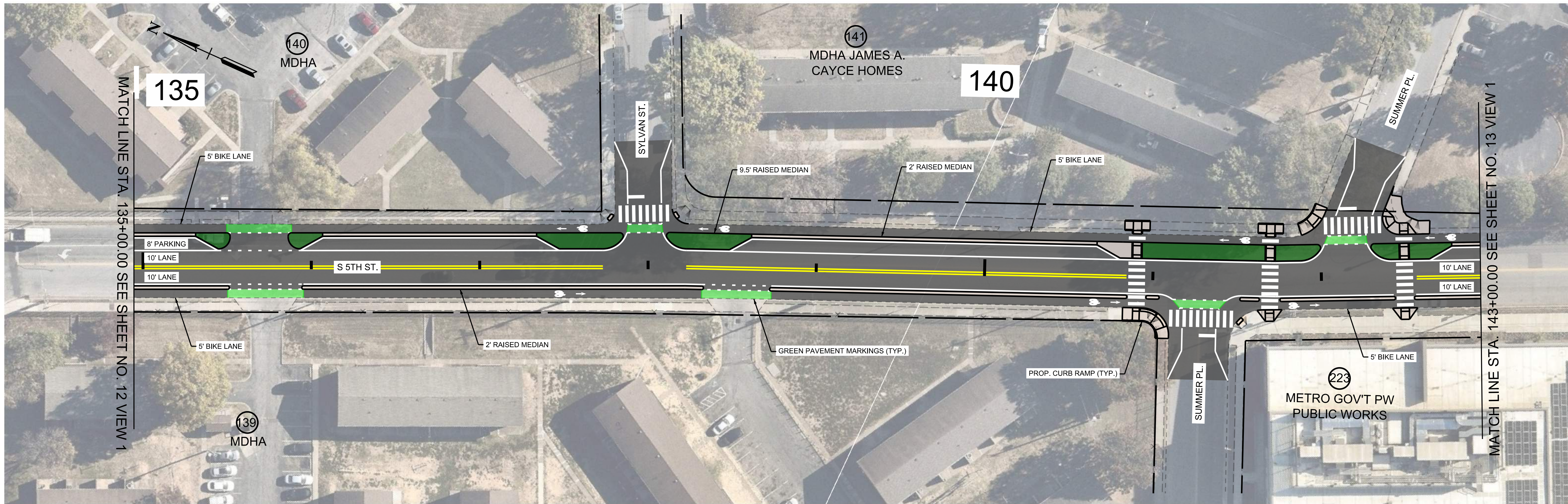
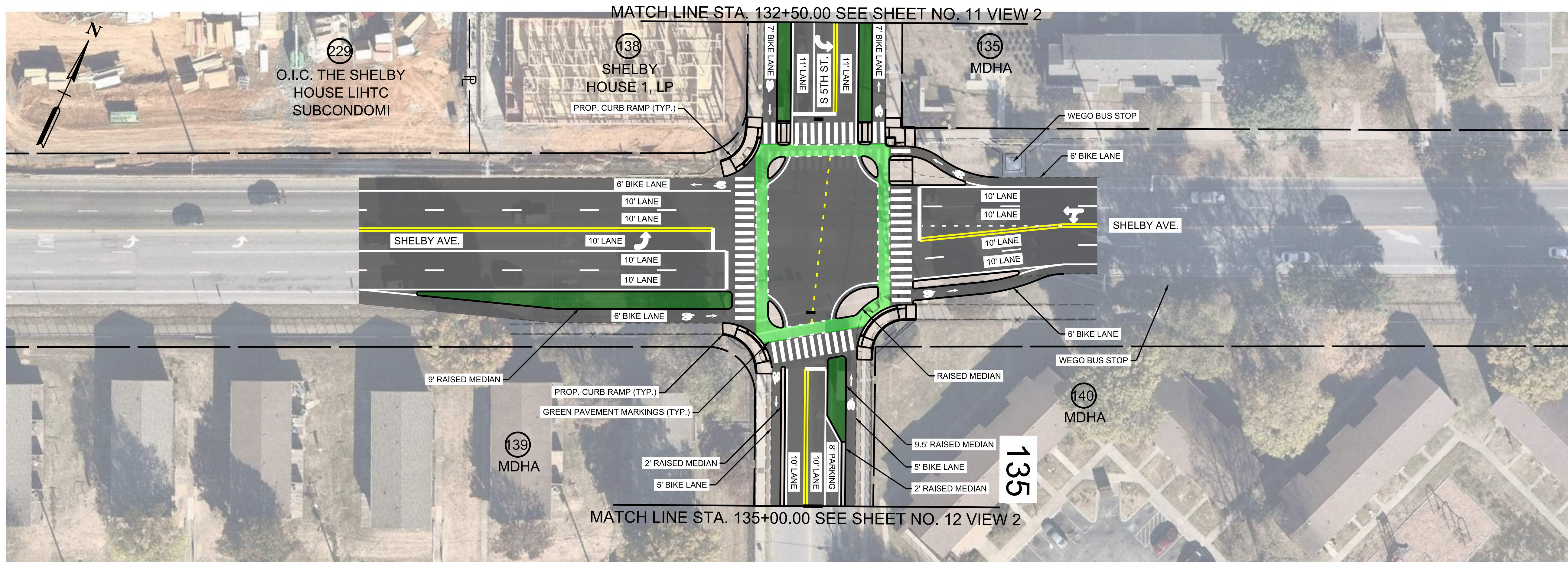
DRAFT PRELIMINARY PLANS
 FOR REVIEW ONLY

Kimley-Horn

DESIGNED BY:
 DRAWN BY:
 CHECKED BY:
 DATE:
 KIMLEY-HORN PROJECT NO. 118900300
 FEDERAL PROJECT NO. STP-M-9312(122)

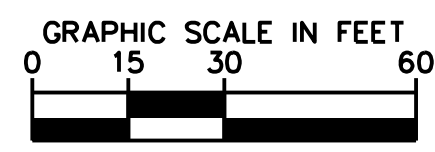
PROPOSED LAYOUT
 SHEET NUMBER
11

This document, together with the concepts and designs presented herein, is intended only for the specific purpose and client for which it was prepared. Reuse of and improper reliance on this document without written authorization and adaptation by Kimley-Horn and Associates, Inc. shall be without liability to Kimley-Horn and Associates, Inc.



LEGEND	
	CONCRETE
	ASPHALT
	LANDSCAPING

PRELIMINARY PLANS



EAST NASHVILLE SPOKES
PIN 128886.00
NASHVILLE, TN

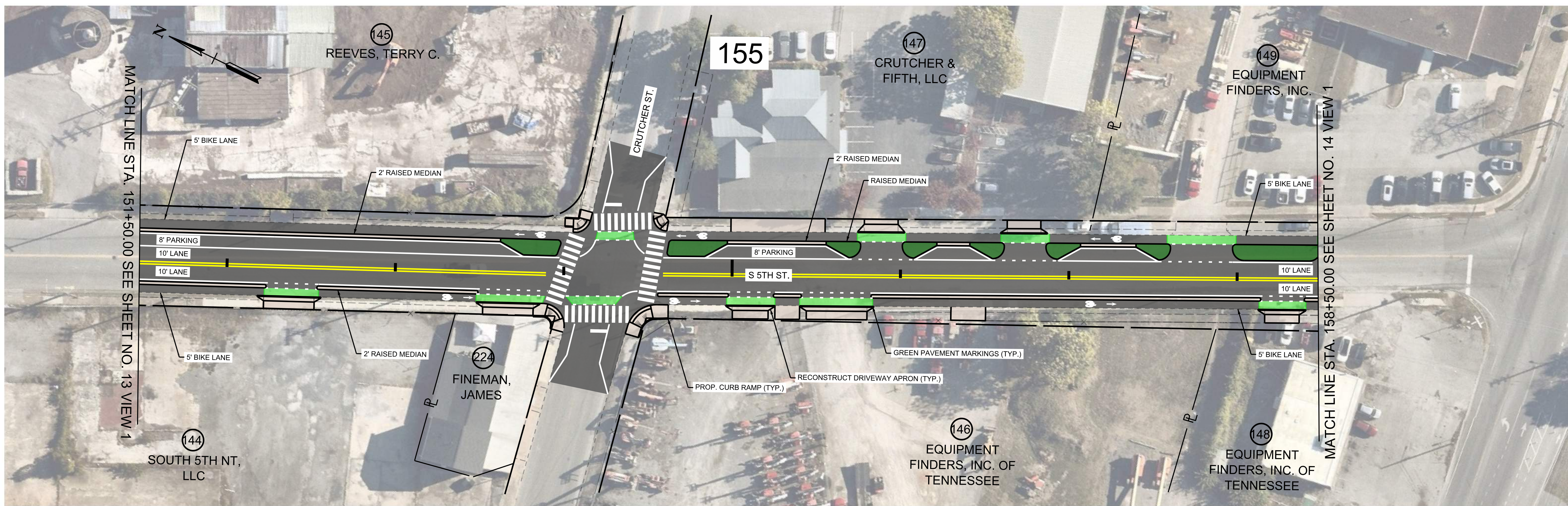
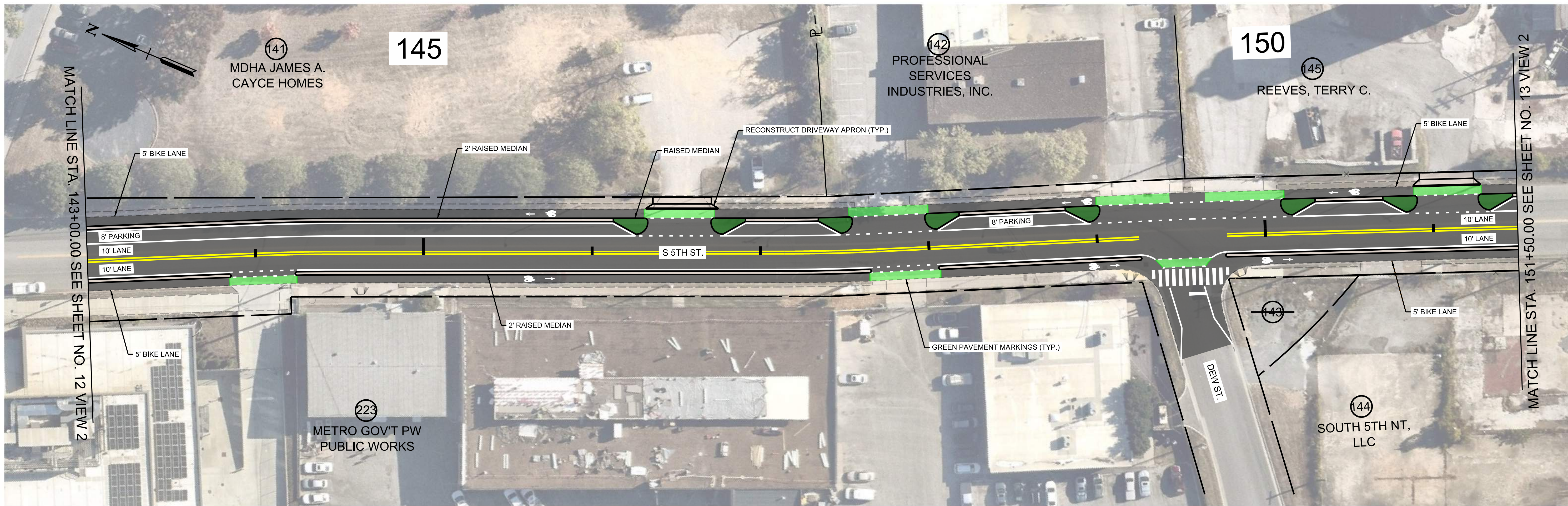
DRAFT
PRELIMINARY PLANS
FOR REVIEW ONLY



DESIGNED BY:
DRAWN BY:
CHECKED BY:
DATE:
KIMLEY-HORN PROJECT NO. 118900300
FEDERAL PROJECT NO. STP-M-9312(122)

PROPOSED LAYOUT
SHEET NUMBER
12

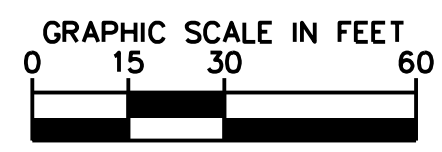
This document, together with the concepts and designs presented herein, is intended only for the specific purpose and client for which it was prepared. Reuse of and improper reliance on this document without written authorization and adaptation by Kimley-Horn and Associates, Inc. shall be without liability to Kimley-Horn and Associates, Inc.



LEGEND	
	CONCRETE
	ASPHALT
	LANDSCAPING

PROPERTY OWNER LEGEND	
	ALTERNATIVE ENERGY PRODUCTS, LLC

PRELIMINARY PLANS



NDOT

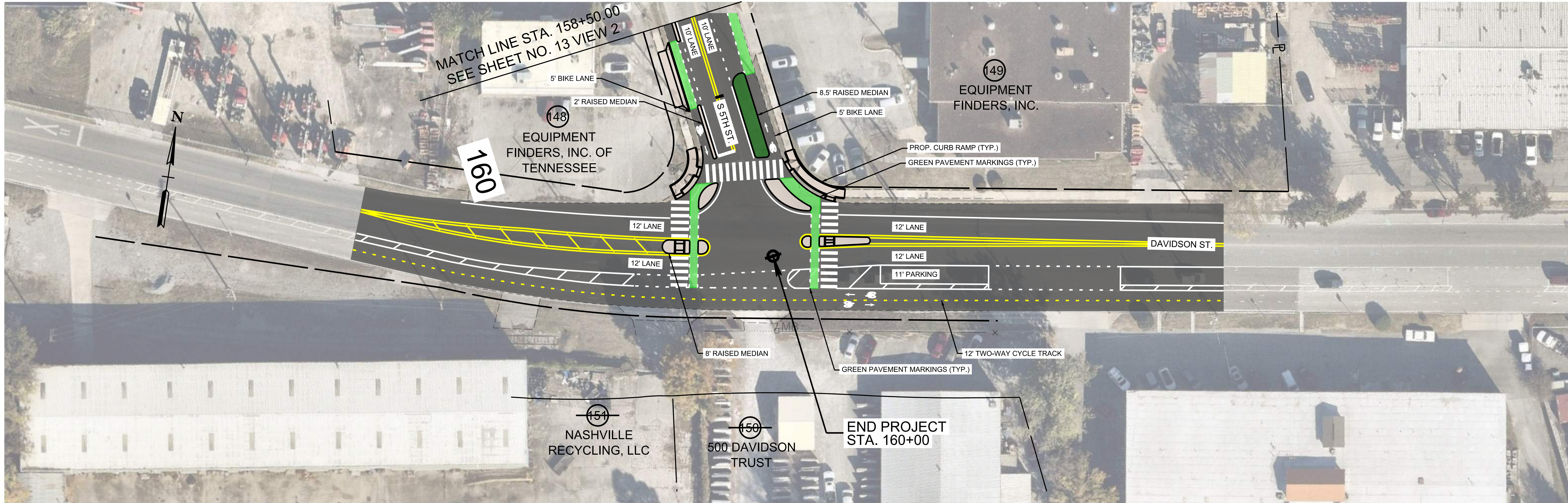
EAST NASHVILLE SPOKES
 PIN 128886.00
 NASHVILLE, TN

DRAFT PRELIMINARY PLANS
 FOR REVIEW ONLY

Kimley-Horn

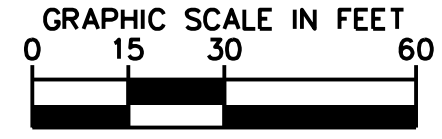
DESIGNED BY:	
DRAWN BY:	
CHECKED BY:	
DATE:	
KIMLEY-HORN PROJECT NO.	118900300
FEDERAL PROJECT NO.	STP-M-9312(122)
PROPOSED LAYOUT	
SHEET NUMBER	13

This document, together with the concepts and designs presented herein, is intended only for the specific purpose and client for which it was prepared. Reuse of and improper reliance on this document without written authorization and adaptation by Kimley-Horn and Associates, Inc. shall be without liability to Kimley-Horn and Associates, Inc.



LEGEND	
	CONCRETE
	ASPHALT
	LANDSCAPING

PRELIMINARY PLANS



EAST NASHVILLE SPOKES
 PIN 128886.00
 NASHVILLE, TN

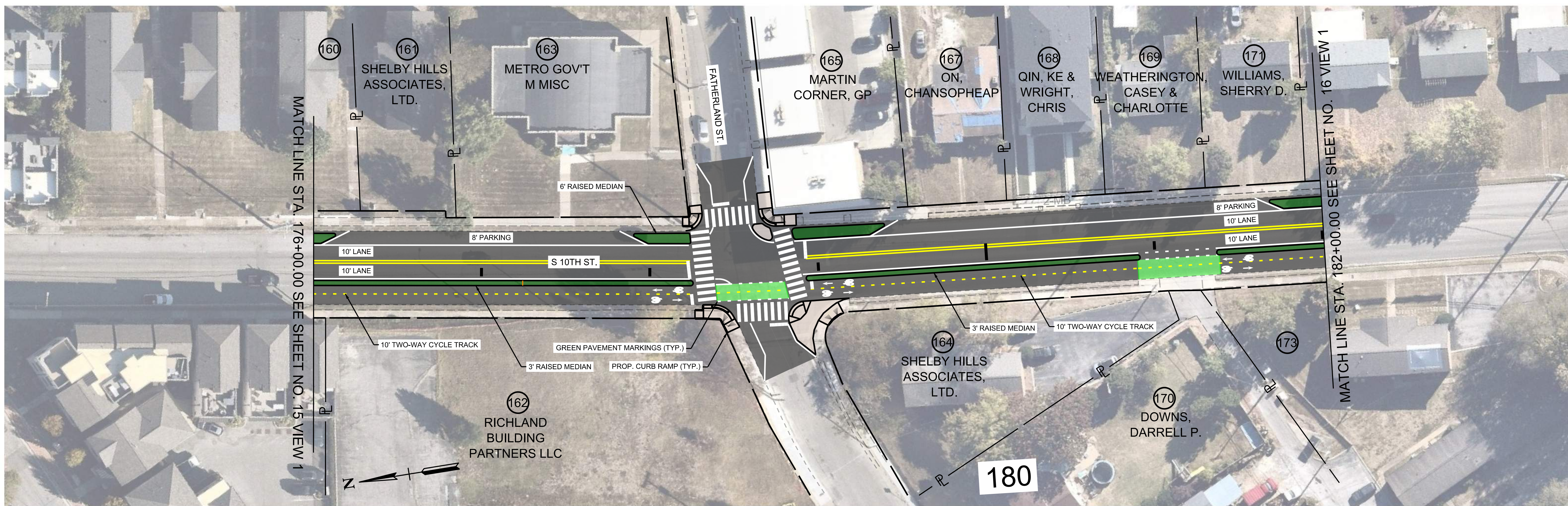
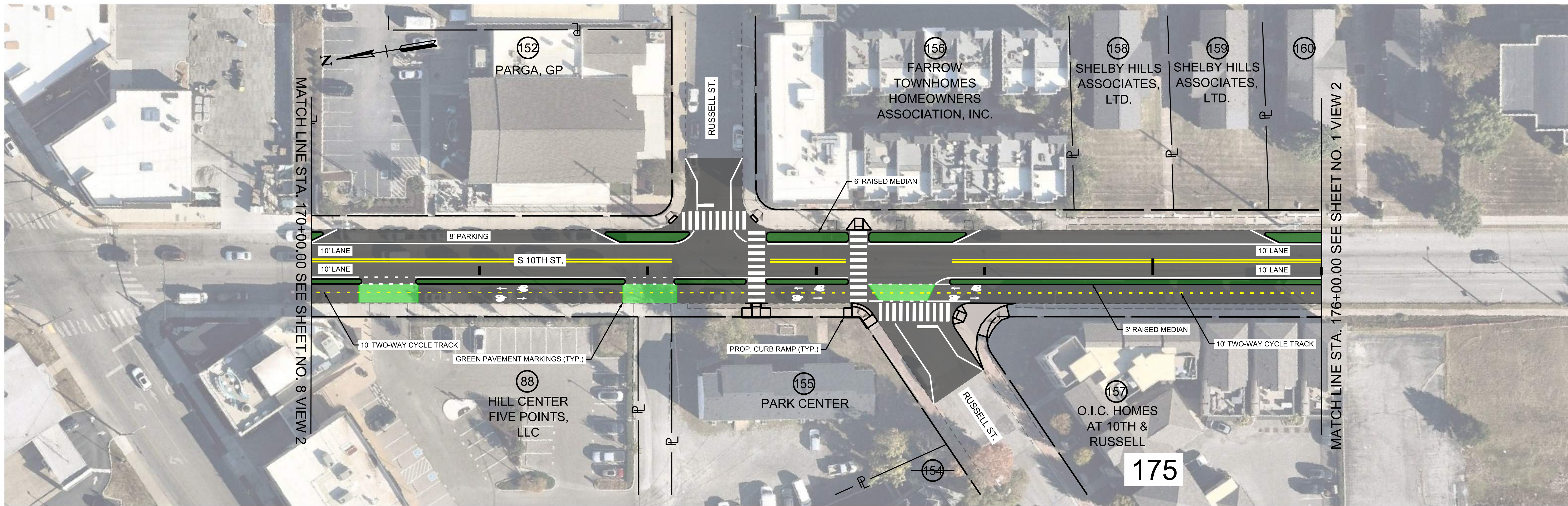
DRAFT PRELIMINARY PLANS
 FOR REVIEW ONLY



DESIGNED BY:
 DRAWN BY:
 CHECKED BY:
 DATE:
 KIMLEY-HORN PROJECT NO. 118900300
 FEDERAL PROJECT NO. STP-M-9312(122)

PROPOSED LAYOUT
 SHEET NUMBER
14

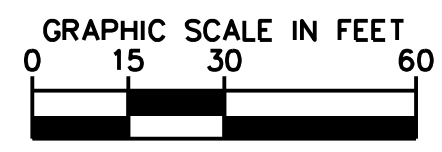
This document, together with the concepts and designs presented herein, as an instrument of service, is intended only for the specific purpose and client for which it was prepared. Reuse of and improper reliance on this document without written authorization and adaptation by Kimley-Horn and Associates, Inc. shall be without liability to Kimley-Horn and Associates, Inc.



LEGEND	
	CONCRETE
	ASPHALT
	LANDSCAPING

PROPERTY OWNER LEGEND	
(154)	ARBUCKLE, JONATHAN A. & BETHANY
(160)	SHELBY HILLS ASSOCIATES, LTD.
(173)	SHELBY HILLS ASSOCIATES, LTD.

PRELIMINARY PLANS



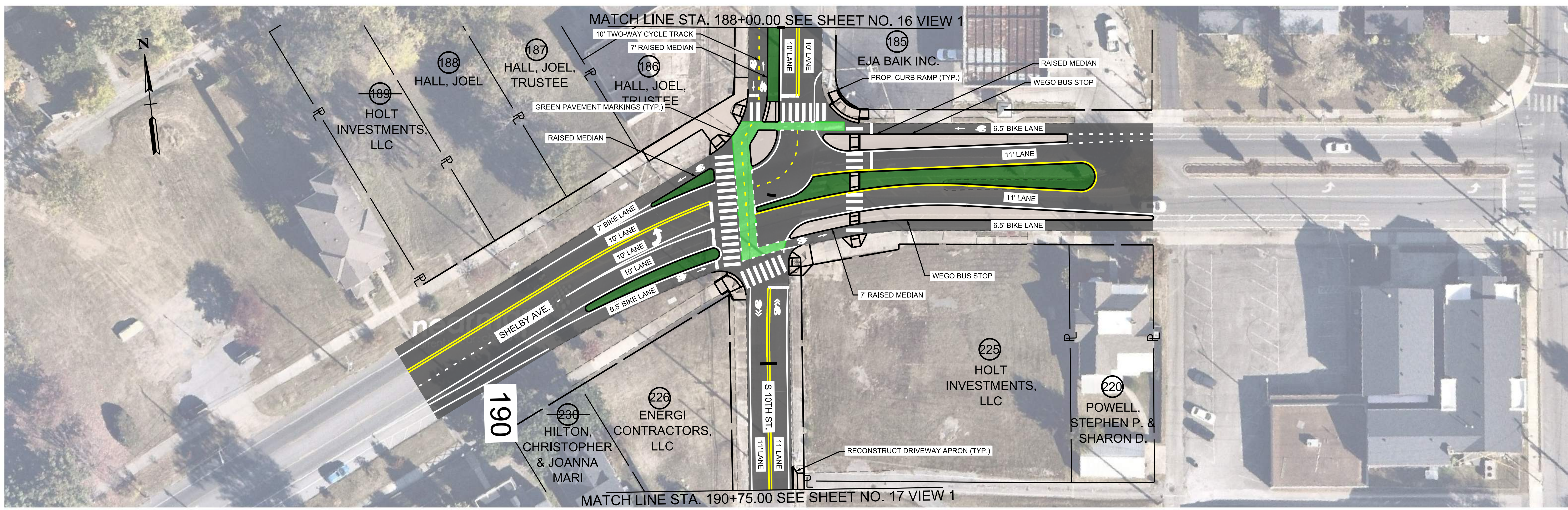
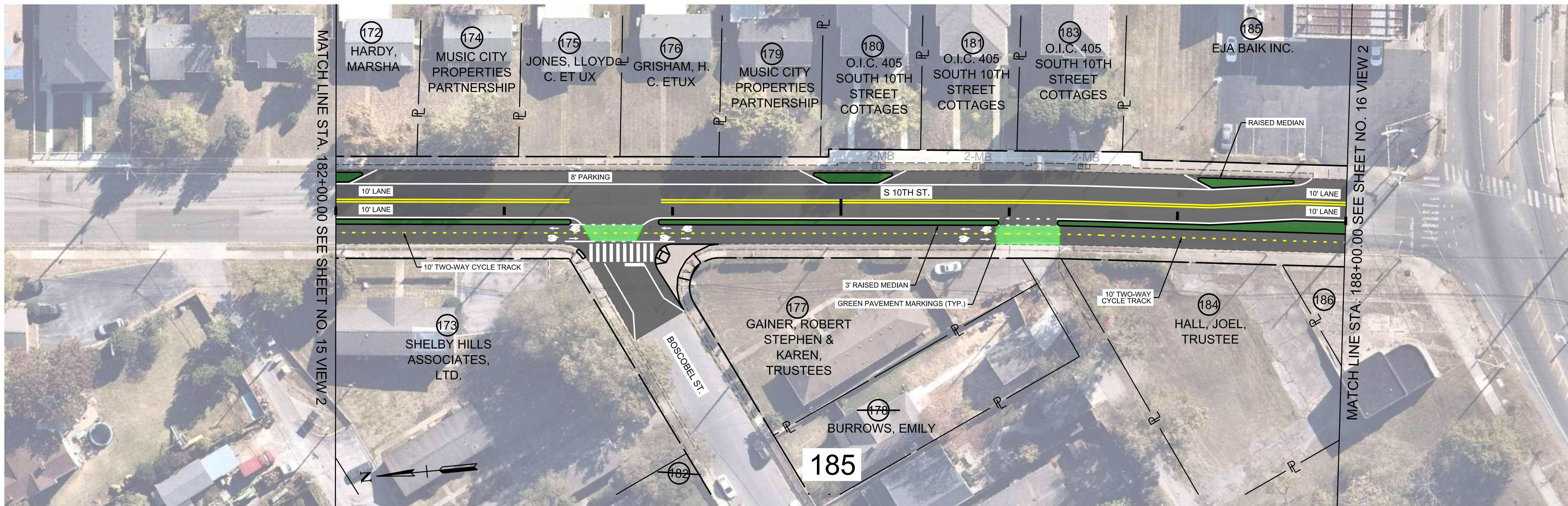
EAST NASHVILLE SPOKES
 PIN 128886.00
 NASHVILLE, TN

DRAFT PRELIMINARY PLANS
 FOR REVIEW ONLY



DESIGNED BY:	
DRAWN BY:	
CHECKED BY:	
DATE:	
KIMLEY-HORN PROJECT NO.	118900300
FEDERAL PROJECT NO.	STP-M-9312(122)
PROPOSED LAYOUT	
SHEET NUMBER	15

This document, together with the concepts and designs presented herein, is intended only for the specific purpose and client for which it was prepared. Reuse of and improper reliance on this document without written authorization and adaptation by Kimley-Horn and Associates, Inc. shall be without liability to Kimley-Horn and Associates, Inc.



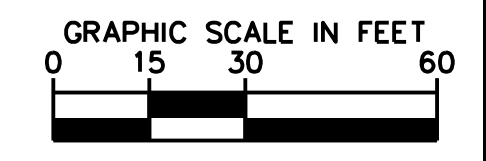
LEGEND

	CONCRETE		ASPHALT
	LANDSCAPING		

PROPERTY OWNER LEGEND

182	O.I.C. HOMES AT 927 BOSCOBEL STREET
186	HALL, JOEL, TRUSTEE

PRELIMINARY PLANS



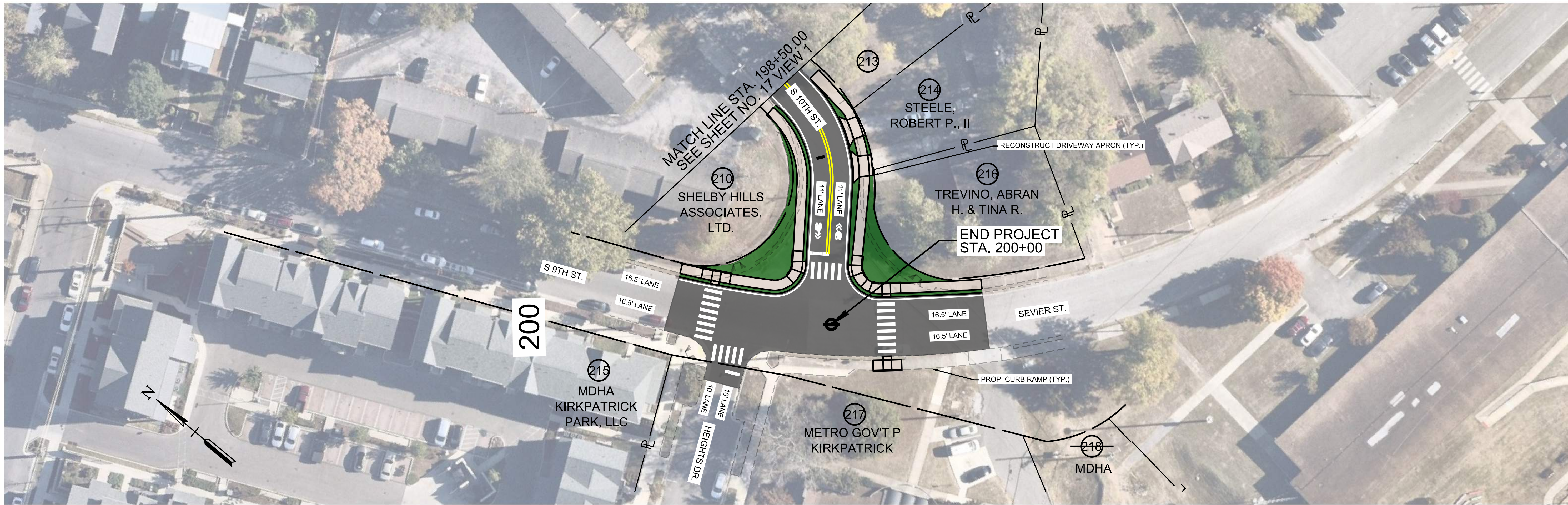
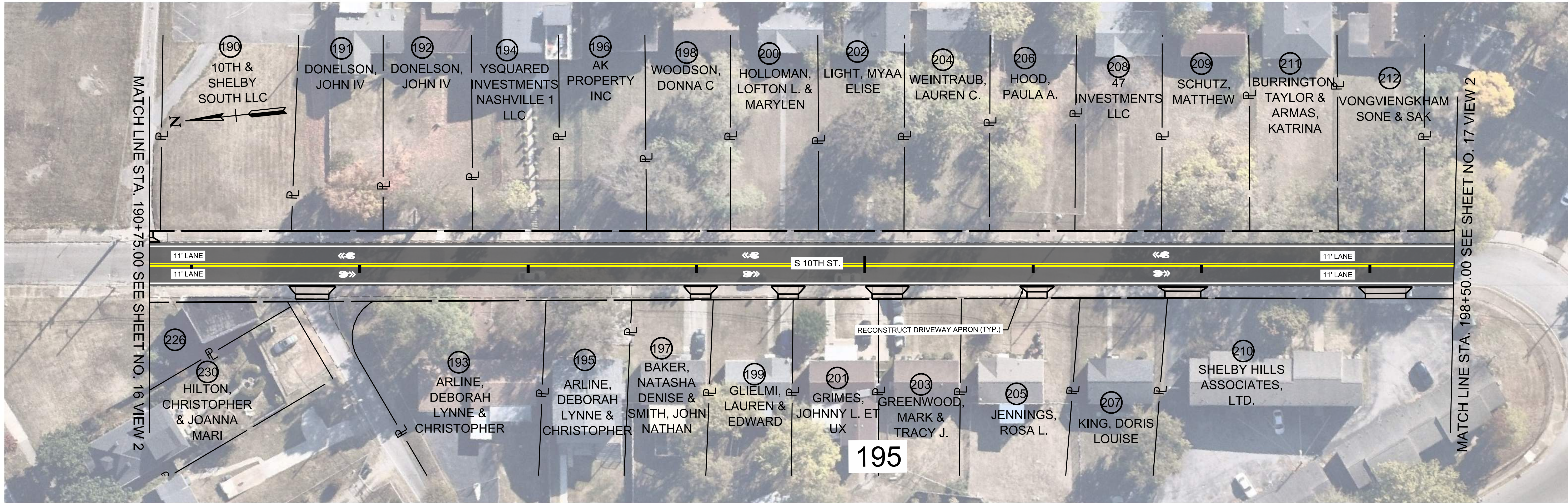
EAST NASHVILLE SPOKES
 PIN 128886.00
 NASHVILLE, TN

DRAFT PRELIMINARY PLANS
 FOR REVIEW ONLY



DESIGNED BY:	
DRAWN BY:	
CHECKED BY:	
DATE:	
KIMLEY-HORN PROJECT NO.	11890300
FEDERAL PROJECT NO.	STP-M-9312(122)
PROPOSED LAYOUT	
SHEET NUMBER	16

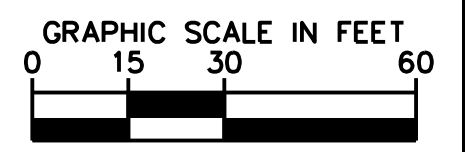
This document, together with the concepts and designs presented herein, is intended only for the specific purpose and client for which it was prepared. Reuse of and improper reliance on this document without written authorization and adaptation by Kimley-Horn and Associates, Inc. shall be without liability to Kimley-Horn and Associates, Inc.



LEGEND	
	CONCRETE
	ASPHALT
	LANDSCAPING

PROPERTY OWNER LEGEND	
213	HARGRETT, PATRICK
226	ENERGI CONTRACTORS, LLC

PRELIMINARY PLANS



NDOT

EAST NASHVILLE SPOKES
PIN 128886.00
NASHVILLE, TN

DRAFT
PRELIMINARY PLANS
FOR REVIEW ONLY

Kimley-Horn

DESIGNED BY:	
DRAWN BY:	
CHECKED BY:	
DATE:	
KIMLEY-HORN PROJECT NO.	118900300
FEDERAL PROJECT NO.	STP-M-9312(122)
PROPOSED LAYOUT	
SHEET NUMBER	17