

ESTIMATED QUANTITIES

SPEED CUSHIONS

6' X 10.5' SPEED CUSHION WITH ONE ARROW	10
-----------------------------------------	----

SIGNING

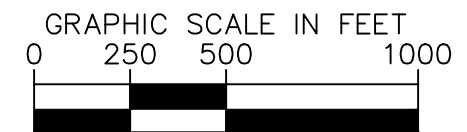
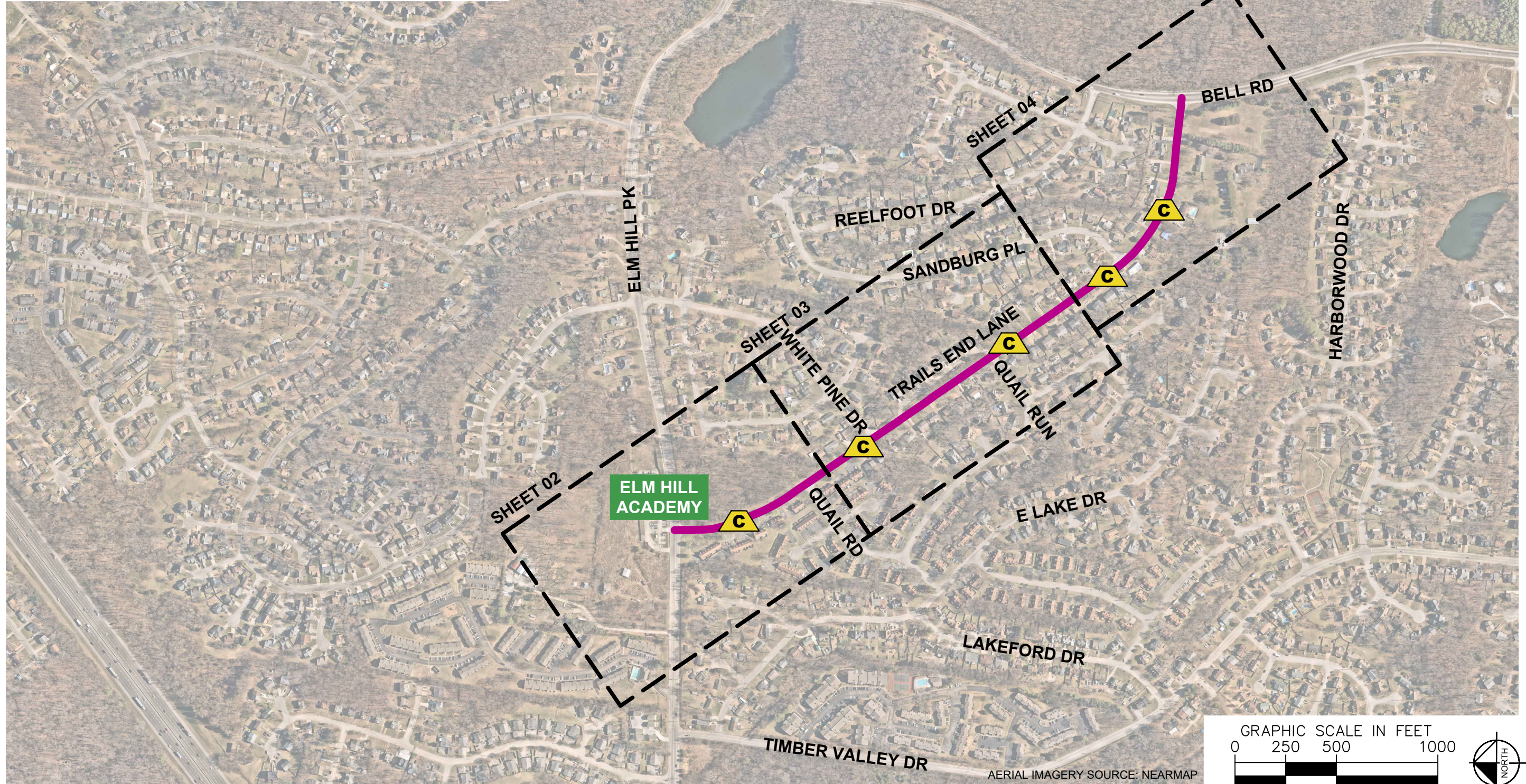
W17-1 (VAR.) "SPEED CUSHION" SIGN (30" X 30")	10
-----------------------------------------------	----

W13-1P "20 M.P.H" SIGN (18" X 18")	10
------------------------------------	----

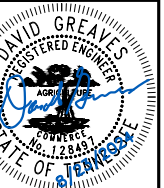
NOTE: ALL LOCATIONS ARE REFERENCED FROM CENTERLINE OF DRIVEWAYS OR OTHER LANDMARKS TO THE CENTER OF SPEED CUSHIONS OR SIGNS.

LEGEND

-  LIMITS OF TRAFFIC CALMING PROJECT
-  SPEED CUSHIONS



AERIAL IMAGERY SOURCE: NEARMAP



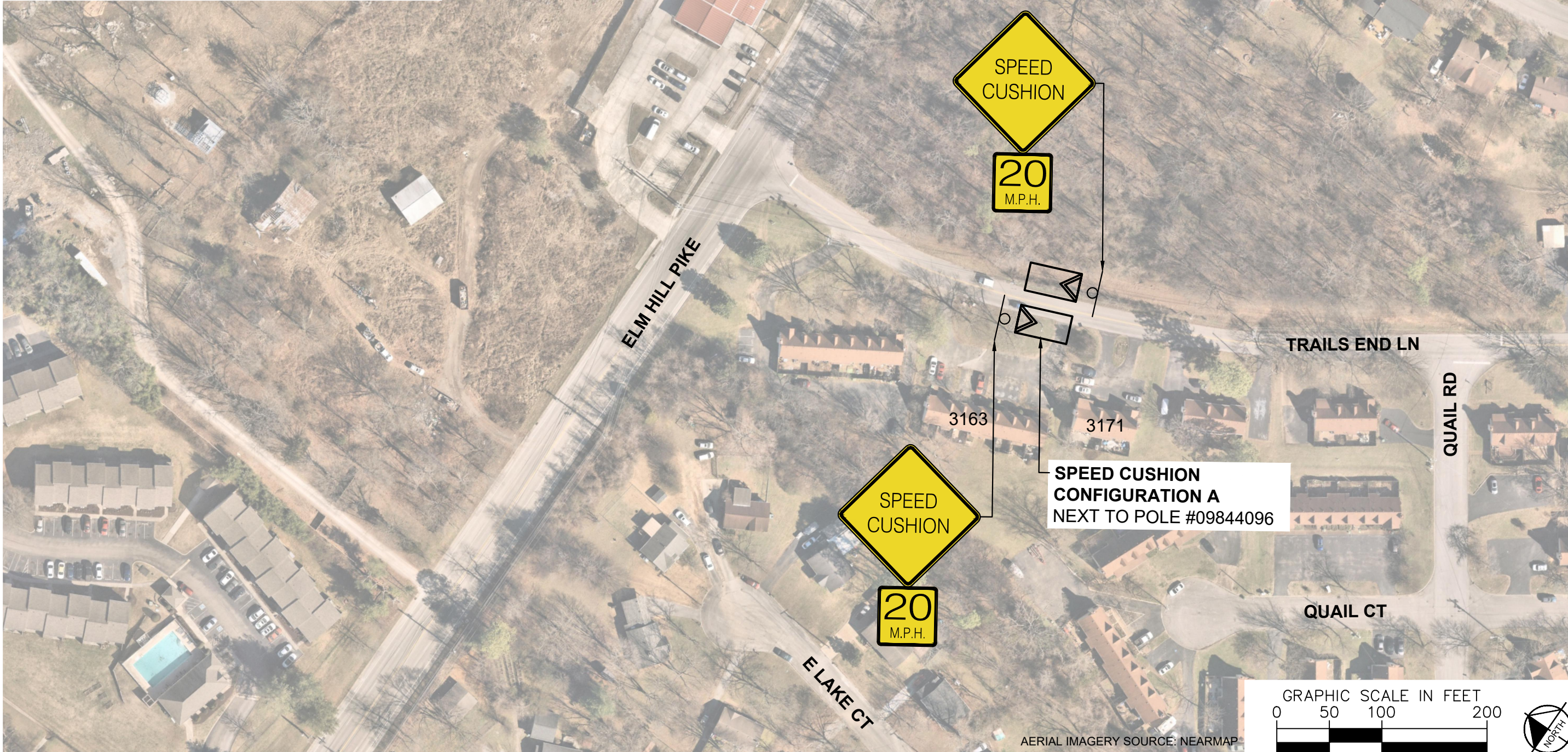
DESIGNED BY:	DJG
DRAWN BY:	RJS
CHECKED BY:	NDOT
DATE:	8/23/2024
KIMLEY-HORN PROJECT NO. 11880051	

KEY

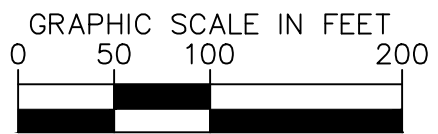
SHEET NUMBER
01

This document, together with the concepts and designs presented herein, is intended only for the specific purpose and client for which it was prepared. Reuse of and improper reliance on this document without written authorization and adaptation by Kimley-Horn and Associates, Inc. shall be without liability to Kimley-Horn and Associates, Inc.

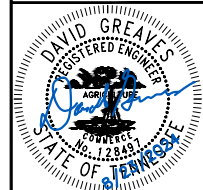
SPEED CUSHIONS



AERIAL IMAGERY SOURCE: NEARMAP



TRAILS END LANE
TRAFFIC CALMING
NASHVILLE, TN



Kimley»Horn

DESIGNED BY:	DJG
DRAWN BY:	RJS
CHECKED BY:	NDOT
DATE:	8/29/2024
KIMLEY-HORN PROJECT NO. 11880051	

CONCEPT
SHEET NUMBER
02

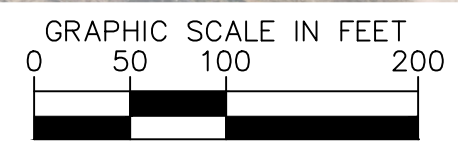
SPEED CUSHIONS



CEDAR RIDGE RD

SPEED CUSHION CONFIGURATION A
20' SOUTH OF DRIVEWAY AT 3193 TRAILS END LN

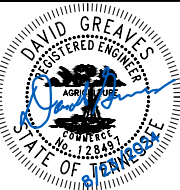
SPEED CUSHION CONFIGURATION A
88' SOUTH OF STOP SIGN AT QUAIL RUN



AERIAL IMAGERY SOURCE: NEARMAP



TRAILS END LANE TRAFFIC CALMING
NASHVILLE, TN



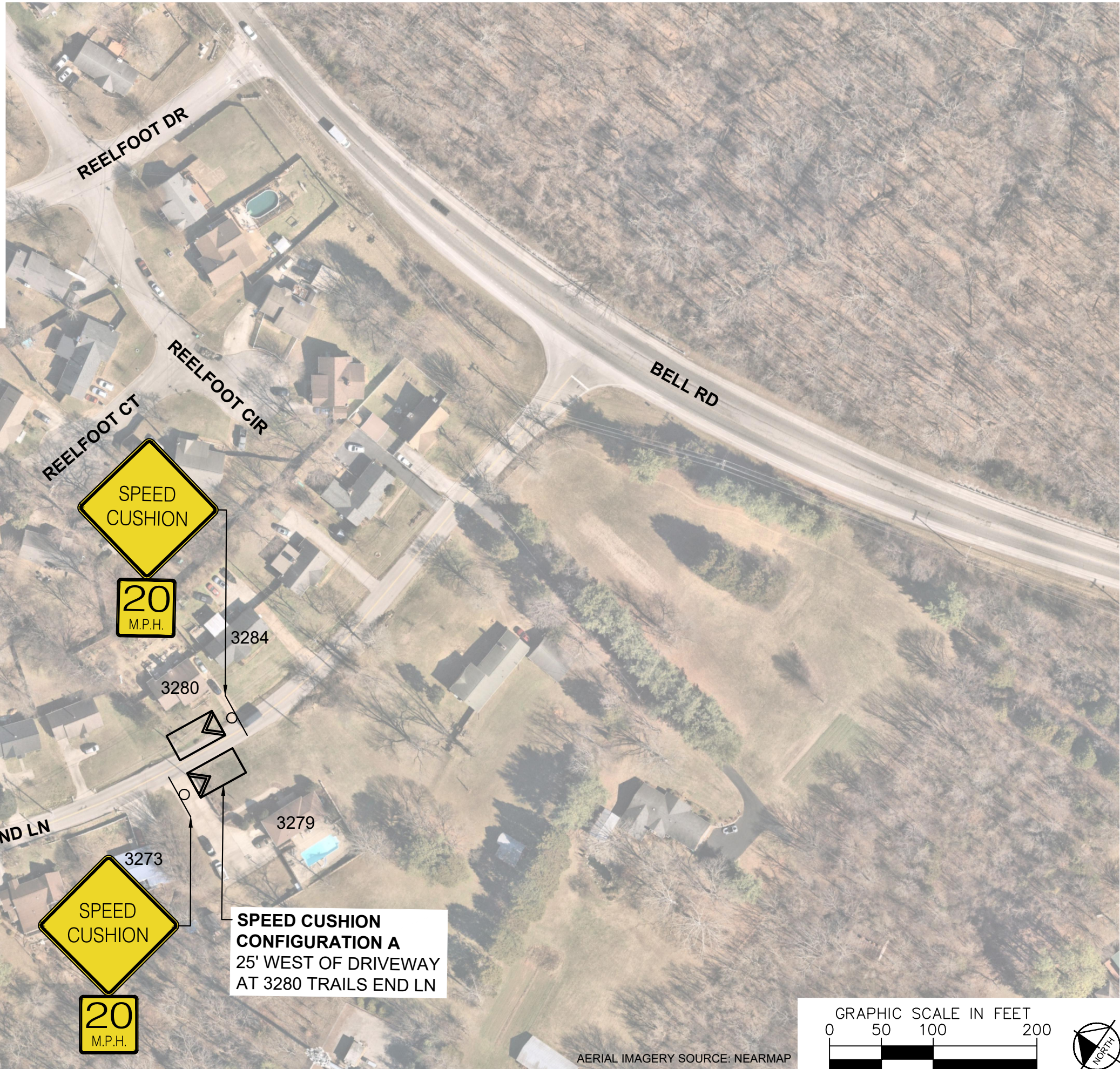
Kimley»Horn

DESIGNED BY:	DJG
DRAWN BY:	RJS
CHECKED BY:	NDOT
DATE:	8/29/2024
KIMLEY-HORN PROJECT NO. 11880051	

CONCEPT

SHEET NUMBER
03

SPEED CUSHIONS

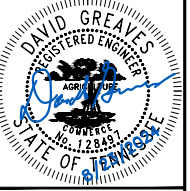


SPEED CUSHION CONFIGURATION A
20' NORTH OF DRIVEWAY AT 3259 TRAILS END LN

SPEED CUSHION CONFIGURATION A
25' WEST OF DRIVEWAY AT 3280 TRAILS END LN



TRAILS END LANE
TRAFFIC CALMING
NASHVILLE, TN

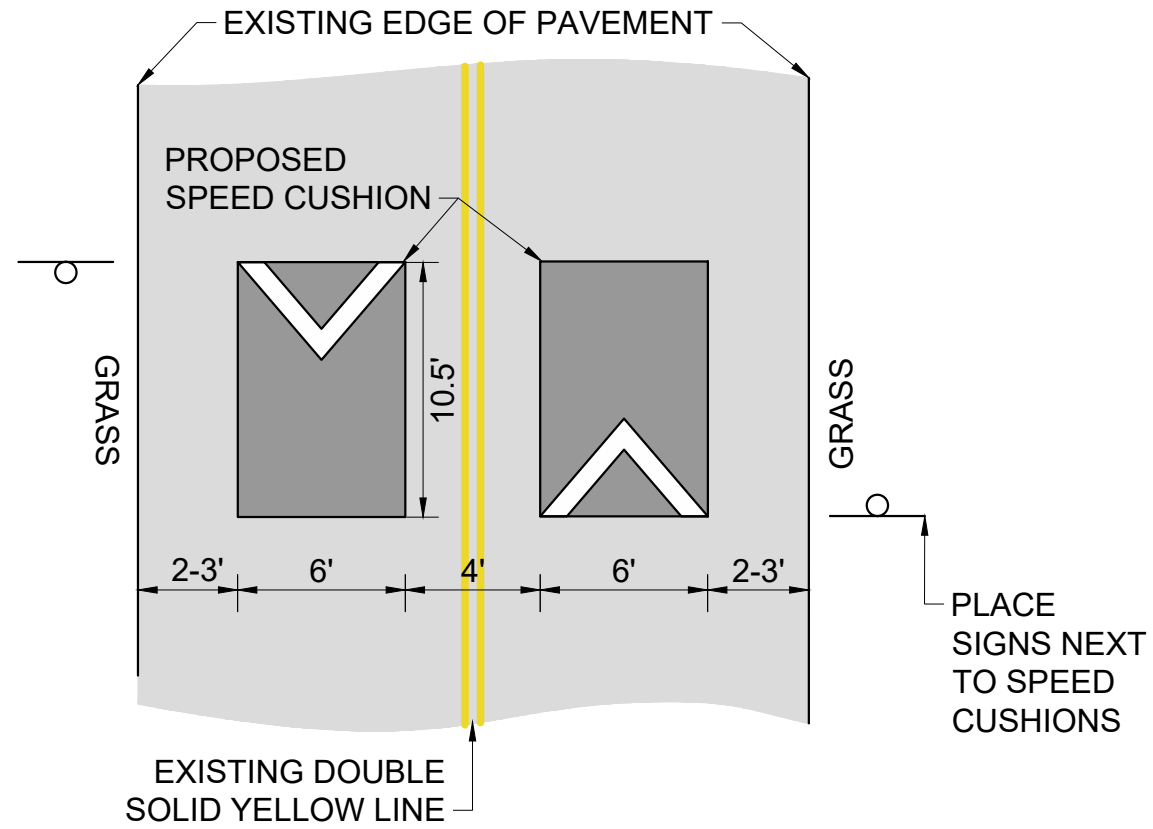


DESIGNED BY:	DJG
DRAWN BY:	RJS
CHECKED BY:	NDOT
DATE:	8/23/2024
KIMLEY-HORN PROJECT NO. 118800051	

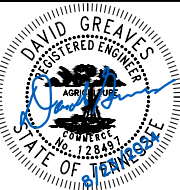
CONCEPT
SHEET NUMBER
04

CONFIGURATION A

PAVEMENT WIDTH: 20'-22'



TRAILS END LANE
TRAFFIC CALMING
NASHVILLE, TN



DESIGNED BY:	DJG
DRAWN BY:	RJS
CHECKED BY:	NDOT
DATE:	8/23/2024
KIMLEY-HORN PROJECT NO. 118800051	

DETAIL

SHEET NUMBER
05

This document, together with the concepts and designs presented herein, is intended only for the specific purpose and client for which it was prepared. Reuse of and improper reliance on this document without written authorization and adaptation by Kimley-Horn and Associates, Inc. shall be without liability to Kimley-Horn and Associates, Inc.