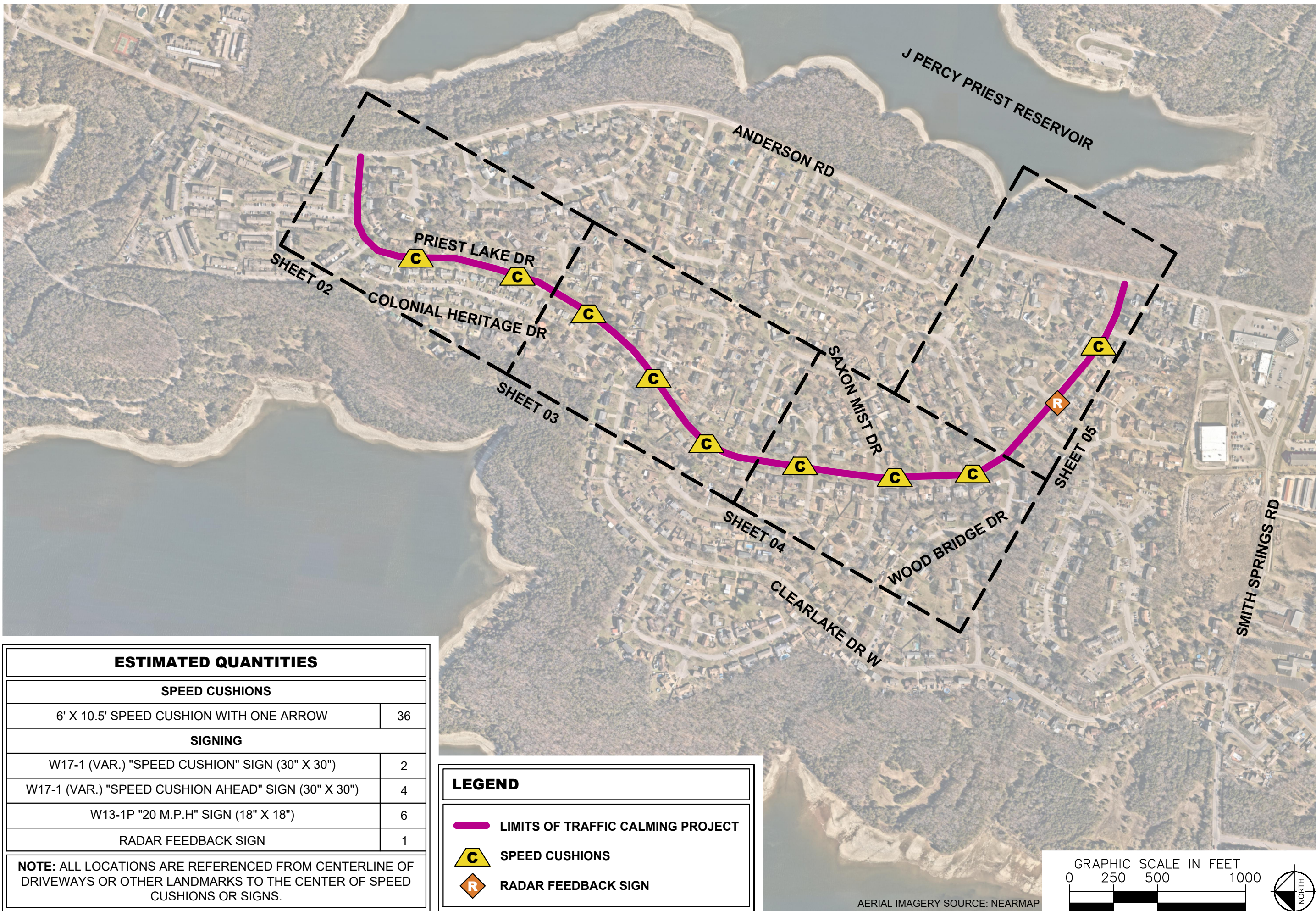


This document, together with the concepts and designs presented herein, is intended only for the specific purpose and client for which it was prepared. Reuse of and improper reliance on this document without written authorization and adaptation by Kimley-Horn and Associates, Inc. shall be without liability to Kimley-Horn and Associates, Inc.



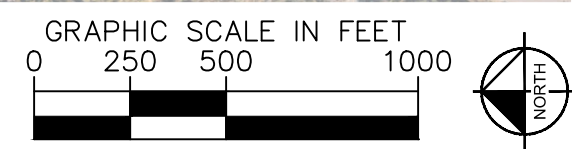
ESTIMATED QUANTITIES

SPEED CUSHIONS	
6' X 10.5' SPEED CUSHION WITH ONE ARROW	36
SIGNING	
W17-1 (VAR.) "SPEED CUSHION" SIGN (30" X 30")	2
W17-1 (VAR.) "SPEED CUSHION AHEAD" SIGN (30" X 30")	4
W13-1P "20 M.P.H" SIGN (18" X 18")	6
RADAR FEEDBACK SIGN	1

NOTE: ALL LOCATIONS ARE REFERENCED FROM CENTERLINE OF DRIVEWAYS OR OTHER LANDMARKS TO THE CENTER OF SPEED CUSHIONS OR SIGNS.

LEGEND

- LIMITS OF TRAFFIC CALMING PROJECT
- C SPEED CUSHIONS
- R RADAR FEEDBACK SIGN



AERIAL IMAGERY SOURCE: NEARMAP



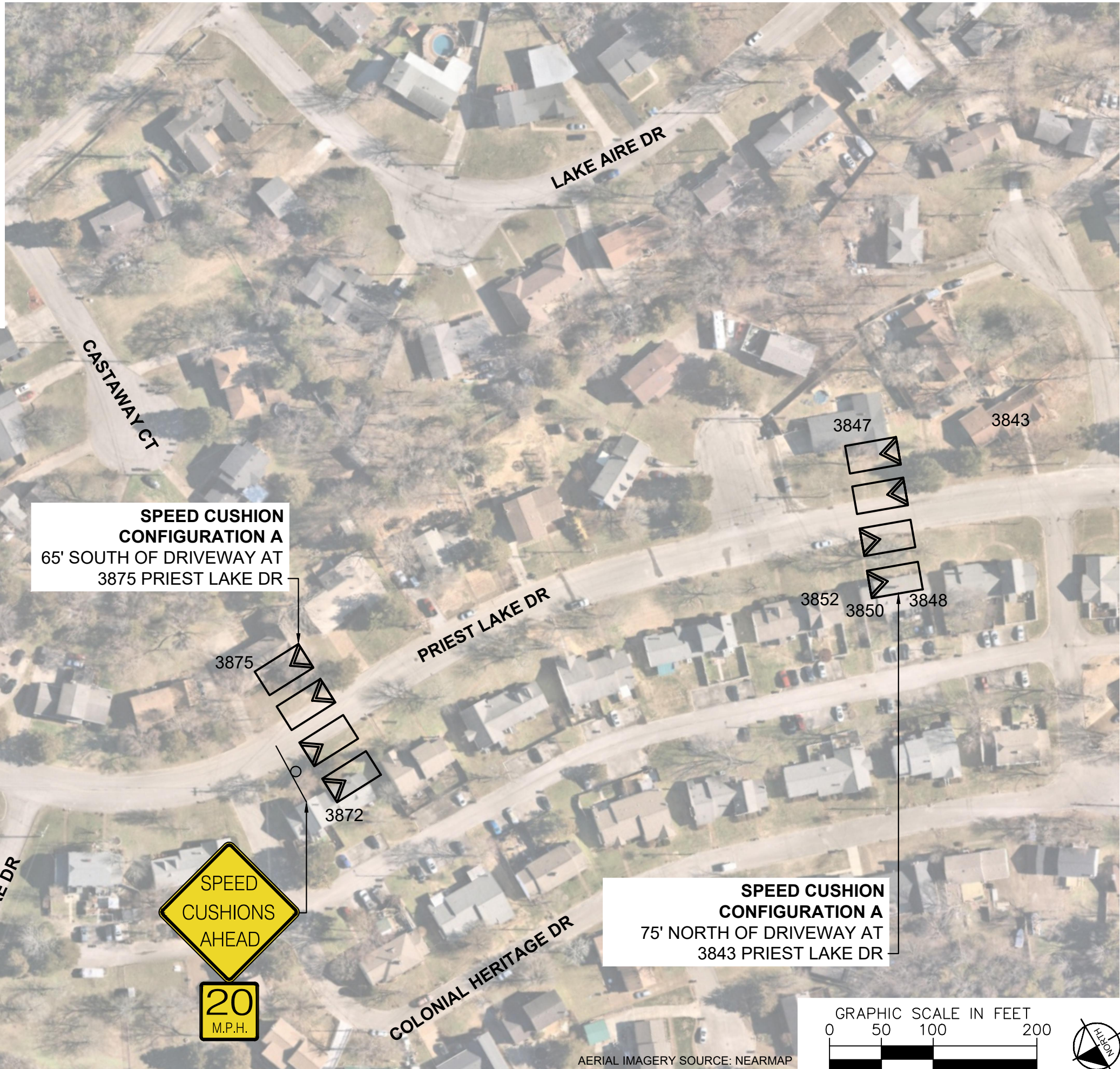
**PRIEST LAKE DRIVE
TRAFFIC CALMING**
NASHVILLE, TN



DESIGNED BY: DHT
DRAWN BY: JCB
CHECKED BY: NDOT
DATE: 5/16/2024
KIMLEY-HORN PROJECT NO. 118900046

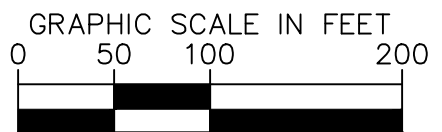
KEY
SHEET NUMBER
01

SPEED CUSHIONS



SPEED CUSHION CONFIGURATION A
65' SOUTH OF DRIVEWAY AT
3875 PRIEST LAKE DR

SPEED CUSHION CONFIGURATION A
75' NORTH OF DRIVEWAY AT
3843 PRIEST LAKE DR



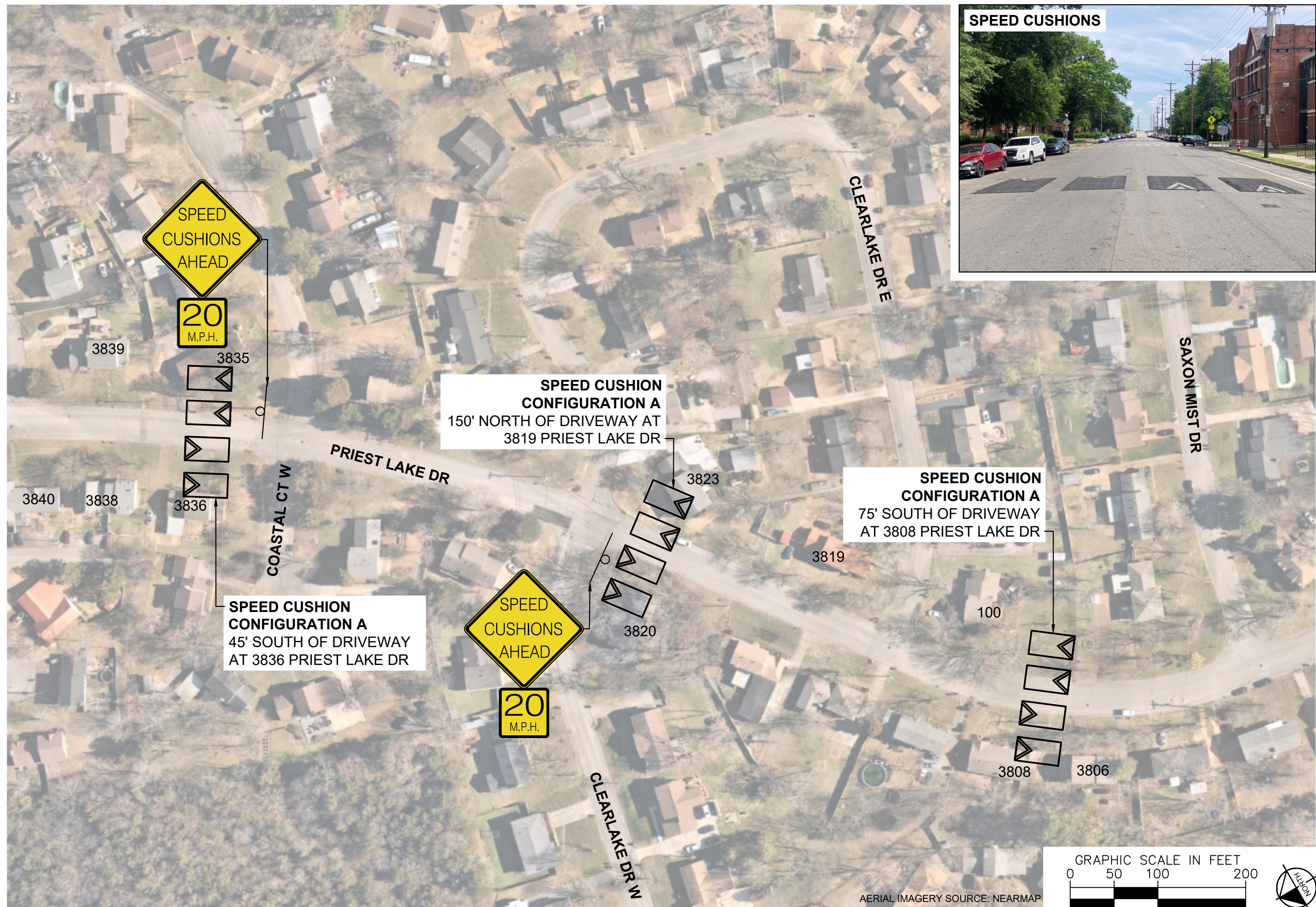
AERIAL IMAGERY SOURCE: NEARMAP



DESIGNED BY:	DHT
DRAWN BY:	JCB
CHECKED BY:	NDOT
DATE:	5/16/2024
KIMLEY-HORN PROJECT NO. 118900046	

This document, together with the concepts and designs presented herein, is intended only for the specific purpose and client for which it was prepared. Reuse of and improper reliance on this document without written authorization and adaptation by Kimley-Horn and Associates, Inc. shall be without liability to Kimley-Horn and Associates, Inc.

This document, together with the concepts and designs presented herein, is intended only for the specific purpose and client for which it was prepared. Reuse of and improper reliance on this document without written authorization and adaptation by Kimley-Horn and Associates, Inc. shall be without liability to Kimley-Horn and Associates, Inc.

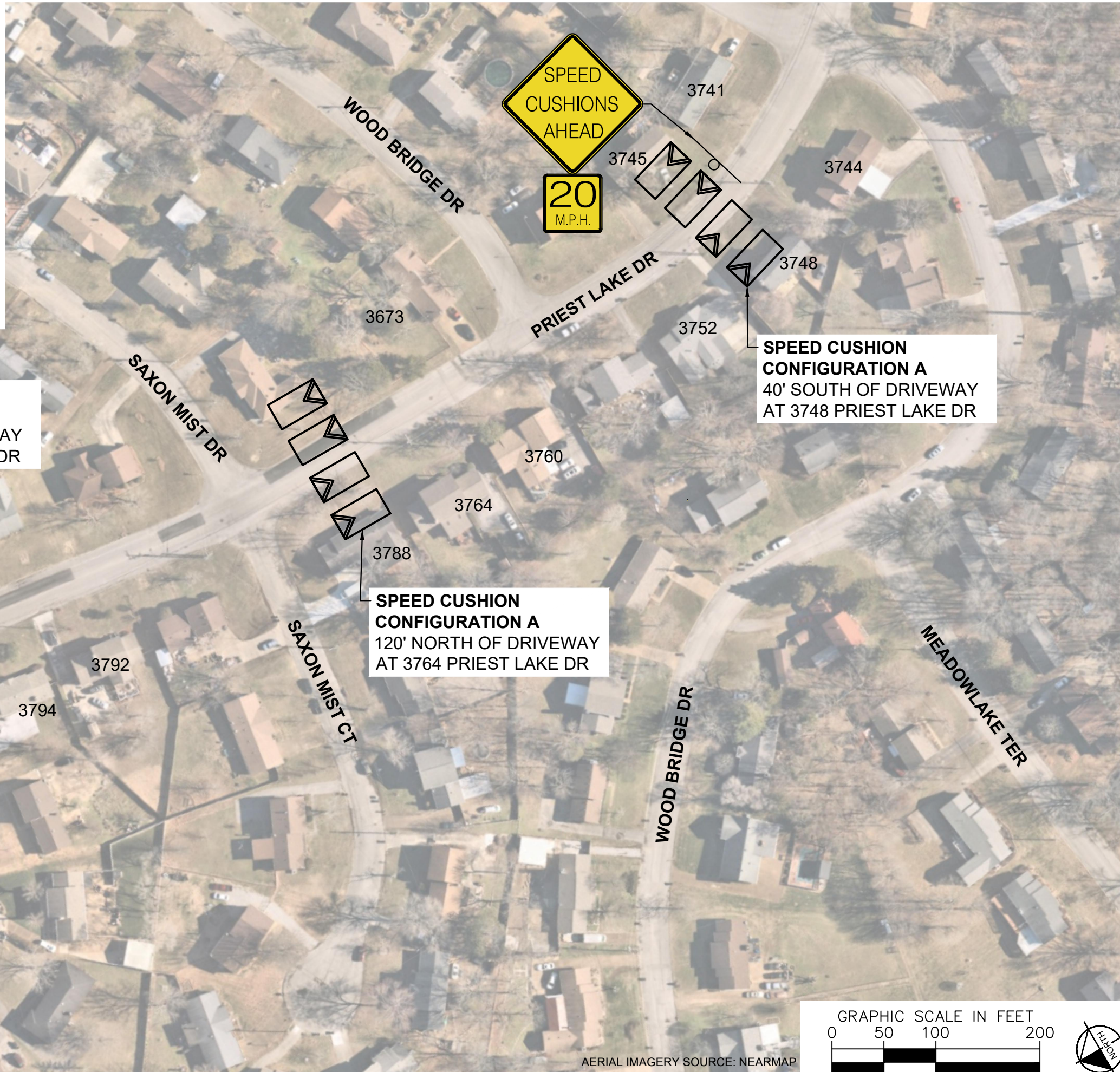


SPEED CUSHIONS



DESIGNED BY:	DHT
DRAWN BY:	JCB
CHECKED BY:	NDOT
DATE:	5/16/2024
KIMLEY-HORN PROJECT NO.:	118900046

SPEED CUSHIONS

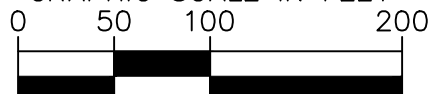


SPEED CUSHION CONFIGURATION A
50' SOUTH OF DRIVEWAY
AT 3809 PRIEST LAKE DR

SPEED CUSHION CONFIGURATION A
120' NORTH OF DRIVEWAY
AT 3764 PRIEST LAKE DR

SPEED CUSHION CONFIGURATION A
40' SOUTH OF DRIVEWAY
AT 3748 PRIEST LAKE DR

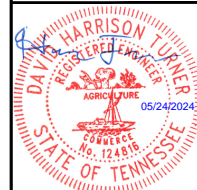
GRAPHIC SCALE IN FEET



AERIAL IMAGERY SOURCE: NEARMAP

NDOT

**PRIEST LAKE DRIVE
TRAFFIC CALMING**
NASHVILLE, TN



Kimley»Horn

DESIGNED BY:	DHT
DRAWN BY:	JCB
CHECKED BY:	NDOT
DATE:	5/16/2024
KIMLEY-HORN PROJECT NO.	118800046

CONCEPT

SHEET NUMBER
04

This document, together with the concepts and designs presented herein, is intended only for the specific purpose and client for which it was prepared. Reuse of and improper reliance on this document without written authorization and adaptation by Kimley-Horn and Associates, Inc. shall be without liability to Kimley-Horn and Associates, Inc.

SPEED CUSHIONS



RADAR FEEDBACK SIGN



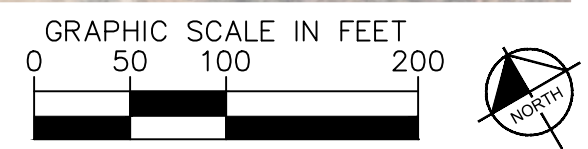
RADAR FEEDBACK SIGN
15' EAST OF DRIVEWAY AT
3732 PRIEST LAKE DR

SPEED CUSHION CONFIGURATION A
30' EAST OF DRIVEWAY AT
3712 PRIEST LAKE DR

SPEED LIMIT
25
YOUR SPEED
25

SPEED CUSHION
20
M.P.H.

SPEED CUSHION
20
M.P.H.



AERIAL IMAGERY SOURCE: NEARMAP

This document, together with the concepts and designs presented herein, is intended only for the specific purpose and client for which it was prepared. Reuse of and improper reliance on this document without written authorization and adaptation by Kimley-Horn and Associates, Inc. shall be without liability to Kimley-Horn and Associates, Inc.

NDOT

**PRIEST LAKE DRIVE
TRAFFIC CALMING**
NASHVILLE, TN



Kimley»Horn

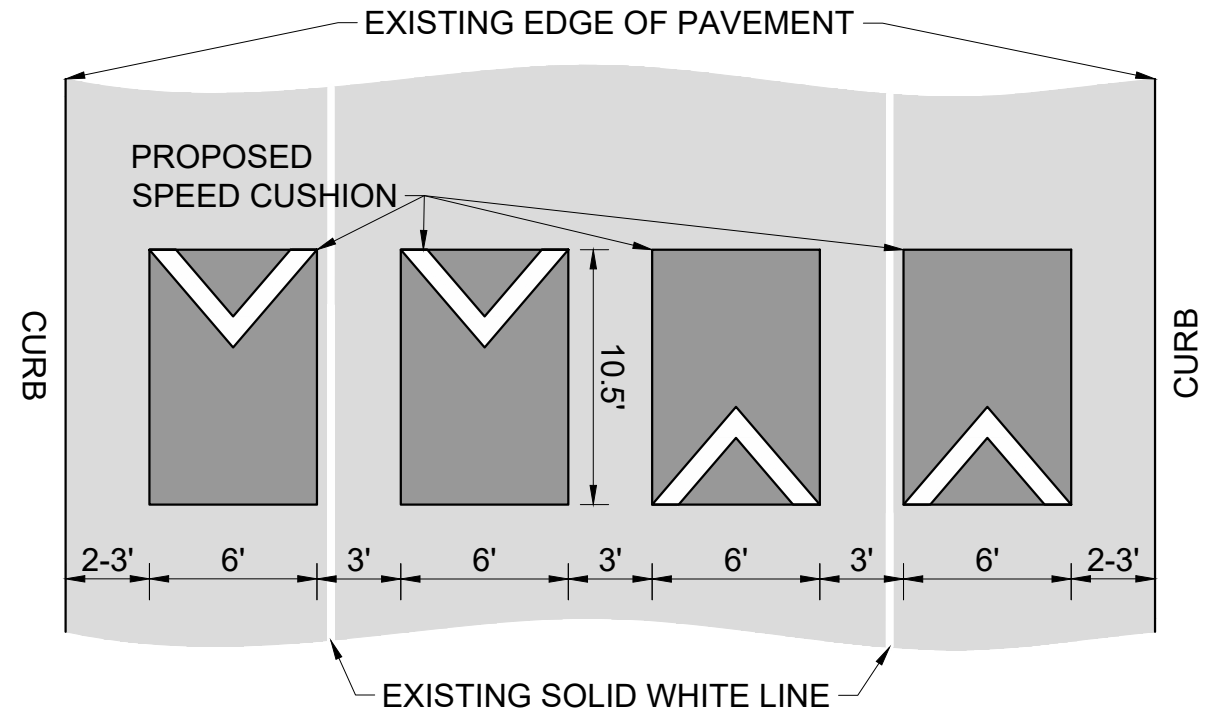
DESIGNED BY:	DHT
DRAWN BY:	JCB
CHECKED BY:	NDOT
DATE:	5/16/2024
KIMLEY-HORN PROJECT NO.:	118900046

CONCEPT
SHEET NUMBER
05

This document, together with the concepts and designs presented herein, as an instrument of service, is intended only for the specific purpose and client for which it was prepared. Reuse of and improper reliance on this document without written authorization and adaptation by Kimley-Horn and Associates, Inc. shall be without liability to Kimley-Horn and Associates, Inc.

CONFIGURATION A

37-39' OF PAVEMENT



PRIEST LAKE DRIVE
TRAFFIC CALMING
NASHVILLE, TN



DESIGNED BY:	DHT
DRAWN BY:	JCB
CHECKED BY:	NDOT
DATE:	5/16/2024
KIMLEY-HORN PROJECT NO.	118800046

DETAIL

SHEET NUMBER
06