

ESTIMATED QUANTITIES

SPEED CUSHIONS

6' X 7' SPEED CUSHION WITH ONE ARROW	8
6' X 7' SPEED CUSHION TWO ARROWS	1

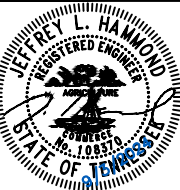
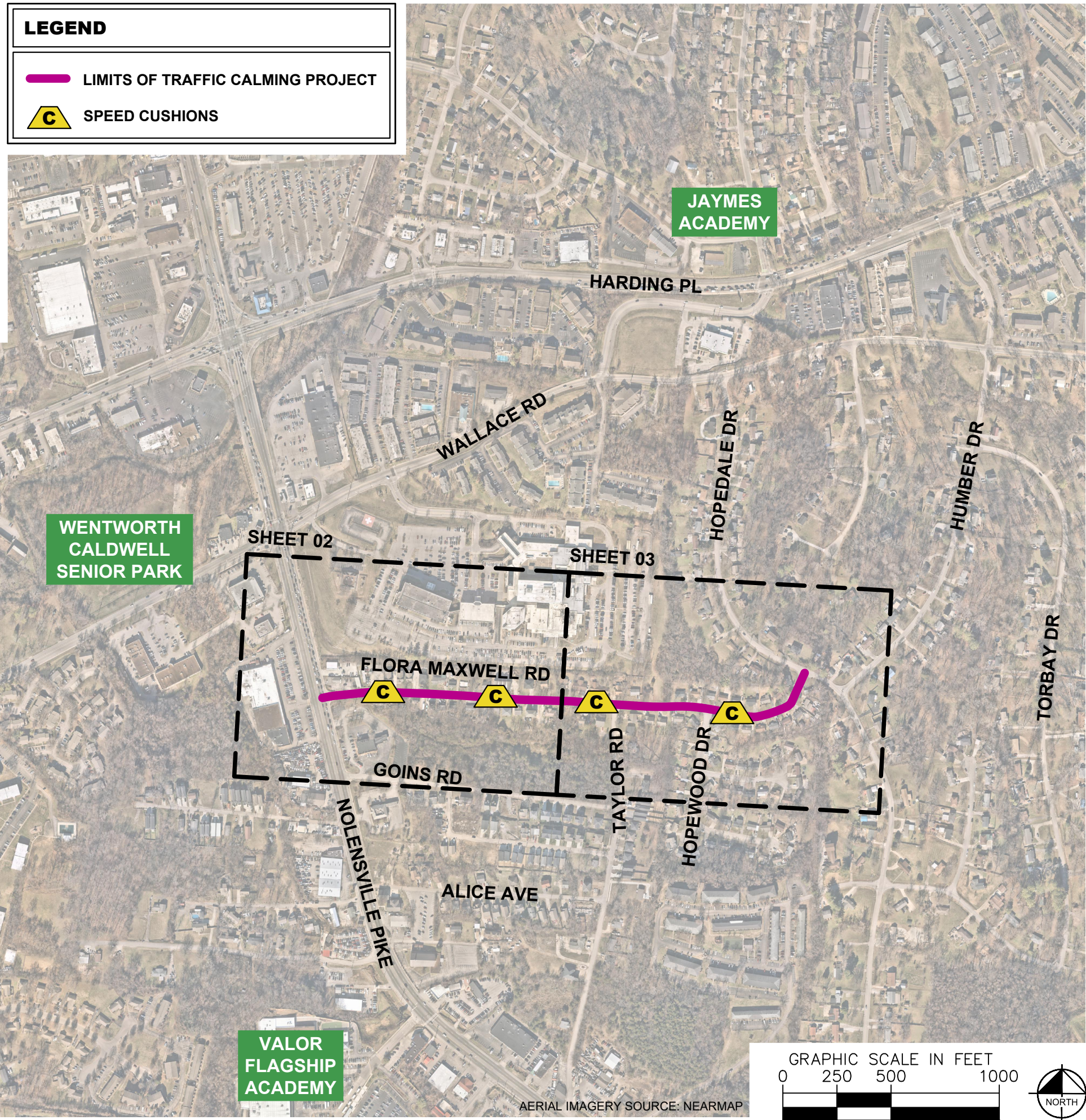
SIGNING

W17-1 (VAR.) "SPEED CUSHION" SIGN (30" X 30")	2
W17-1 (VAR.) "SPEED CUSHIONS AHEAD" SIGN (30" X 30")	2
W13-1P "20 M.P.H" SIGN (18" X 18")	4

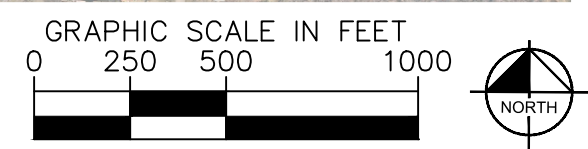
NOTE: ALL LOCATIONS ARE REFERENCED FROM CENTERLINE OF DRIVEWAYS OR OTHER LANDMARKS TO THE CENTER OF SPEED CUSHIONS OR SIGNS.

LEGEND

-  LIMITS OF TRAFFIC CALMING PROJECT
-  SPEED CUSHIONS



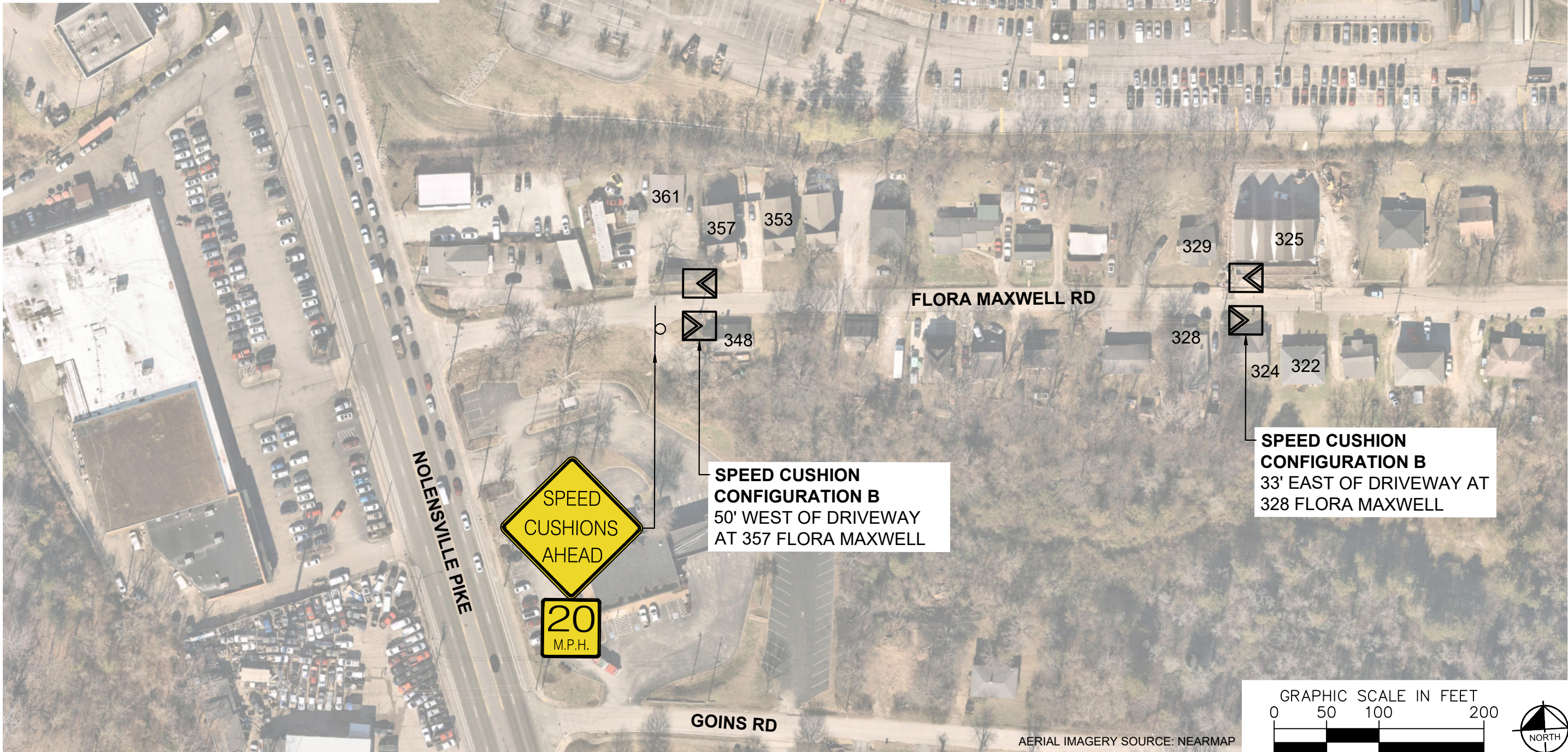
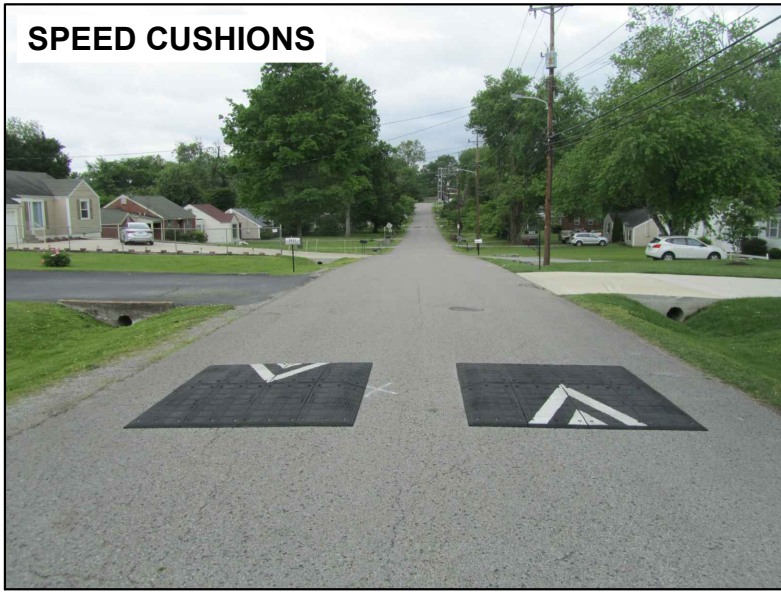
DESIGNED BY:	JHL
DRAWN BY:	RJS
CHECKED BY:	NDOT
DATE:	03/2024
KIMLEY-HORN PROJECT NO.:	118900046



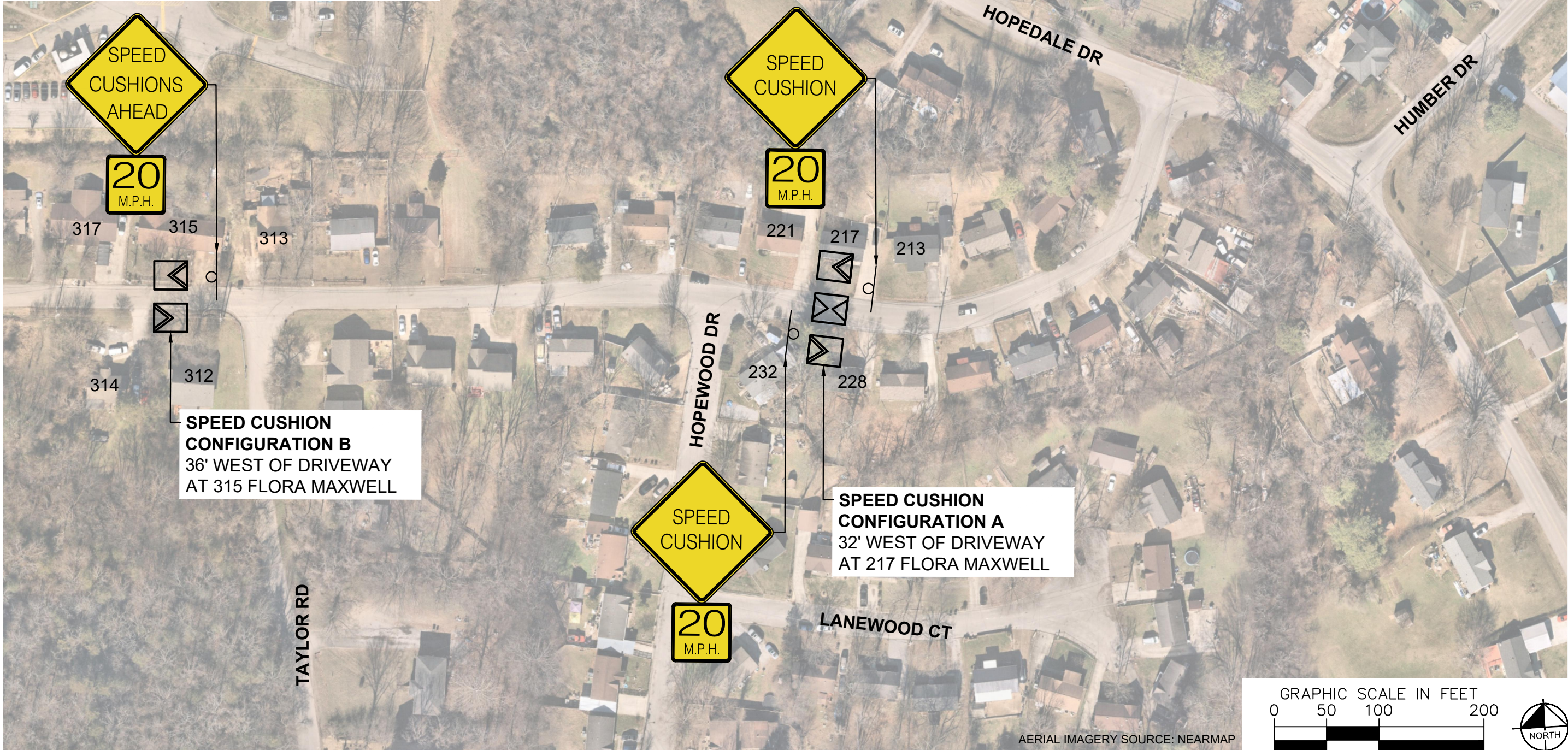
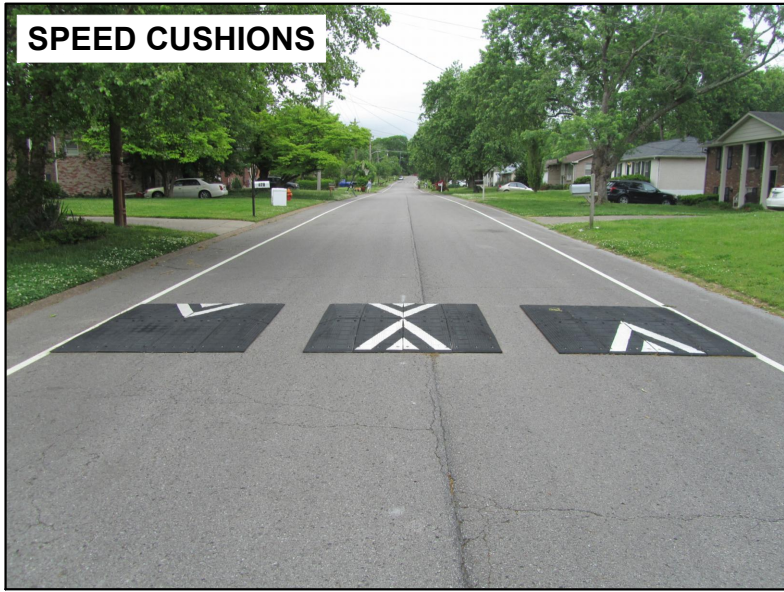
KEY
SHEET NUMBER
01

This document, together with the concepts and designs presented herein, is intended only for the specific purpose and client for which it was prepared. Reuse of and improper reliance on this document without written authorization and adaptation by Kimley-Horn and Associates, Inc. shall be without liability to Kimley-Horn and Associates, Inc.

SPEED CUSHIONS

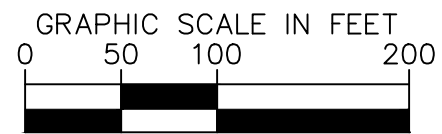


SPEED CUSHIONS



SPEED CUSHION CONFIGURATION B
36' WEST OF DRIVEWAY
AT 315 FLORA MAXWELL

SPEED CUSHION CONFIGURATION A
32' WEST OF DRIVEWAY
AT 217 FLORA MAXWELL



AERIAL IMAGERY SOURCE: NEARMAP



**FLORA MAXWELL ROAD
TRAFFIC CALMING**
NASHVILLE, TN

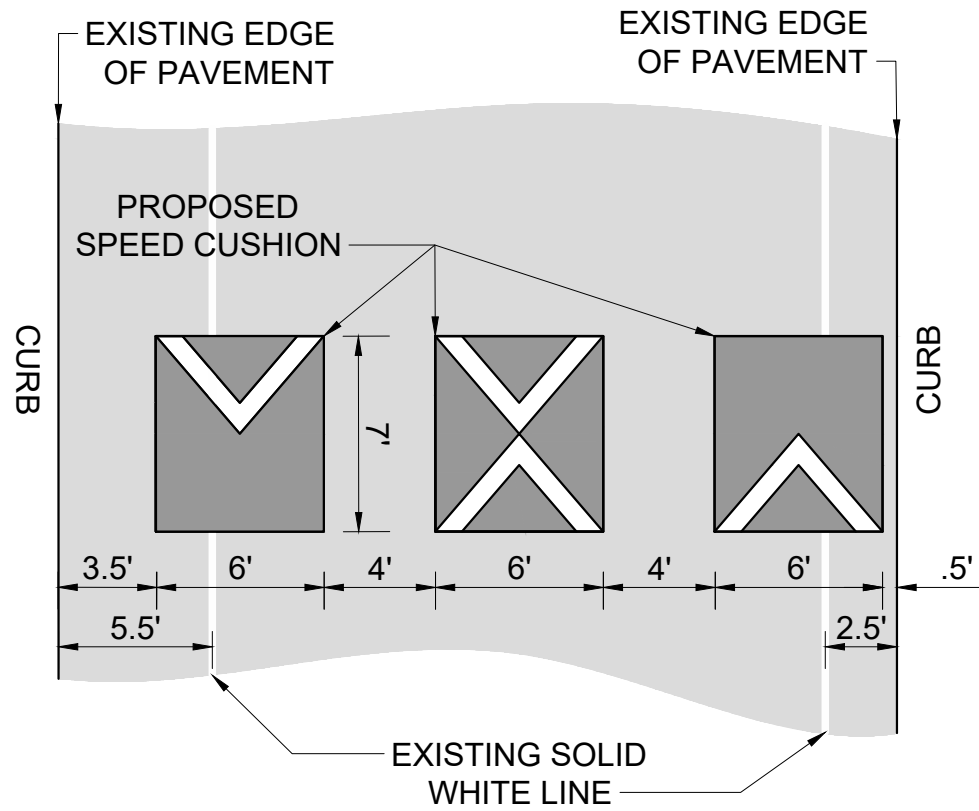


DESIGNED BY:	JHL
DRAWN BY:	RJS
CHECKED BY:	NDOT
DATE:	9/3/2024
KIMLEY-HORN PROJECT NO.:	11880046

CONCEPT
SHEET NUMBER
03

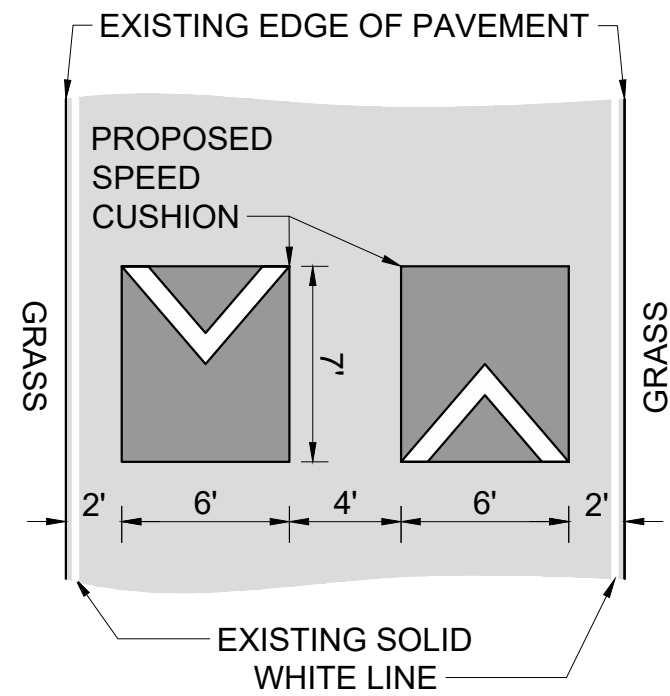
CONFIGURATION A

PAVEMENT WIDTH: 30'



CONFIGURATION B

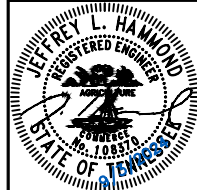
PAVEMENT WIDTH: 20'



This document, together with the concepts and designs presented herein, is intended only for the specific purpose and client for which it was prepared. Reuse of and improper reliance on this document without written authorization and adaptation by Kimley-Horn and Associates, Inc. shall be without liability to Kimley-Horn and Associates, Inc.



FLORA MAXWELL ROAD
TRAFFIC CALMING
NASHVILLE, TN



DESIGNED BY: JHL
DRAWN BY: RJS
CHECKED BY: NDOT
DATE: 8/3/2024
KIMLEY-HORN PROJECT NO. 118800046

DETAIL

SHEET NUMBER
05