

ESTIMATED QUANTITIES

SPEED CUSHIONS

| | |
|---|----|
| 6' X 10.5' SPEED CUSHION WITH ONE ARROW | 16 |
|---|----|

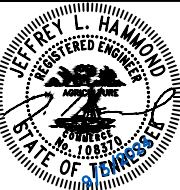
SIGNING

| | |
|---|---|
| W17-1 (VAR.) "SPEED CUSHION" SIGN (30" X 30") | 8 |
| W13-1P "20 M.P.H" SIGN (18" X 18") | 8 |

NOTE: ALL LOCATIONS ARE REFERENCED FROM CENTERLINE OF DRIVEWAYS OR OTHER LANDMARKS TO THE CENTER OF SPEED CUSHIONS OR SIGNS.

LEGEND

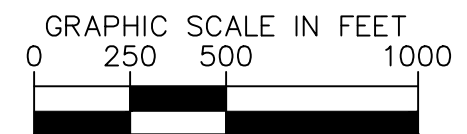
-  LIMITS OF TRAFFIC CALMING PROJECT
-  SPEED CUSHIONS



| | |
|--------------------------|-----------|
| DESIGNED BY: | JLH |
| DRAWN BY: | RJS |
| CHECKED BY: | NDOT |
| DATE: | 03/2024 |
| KIMLEY-HORN PROJECT NO.: | 118800051 |

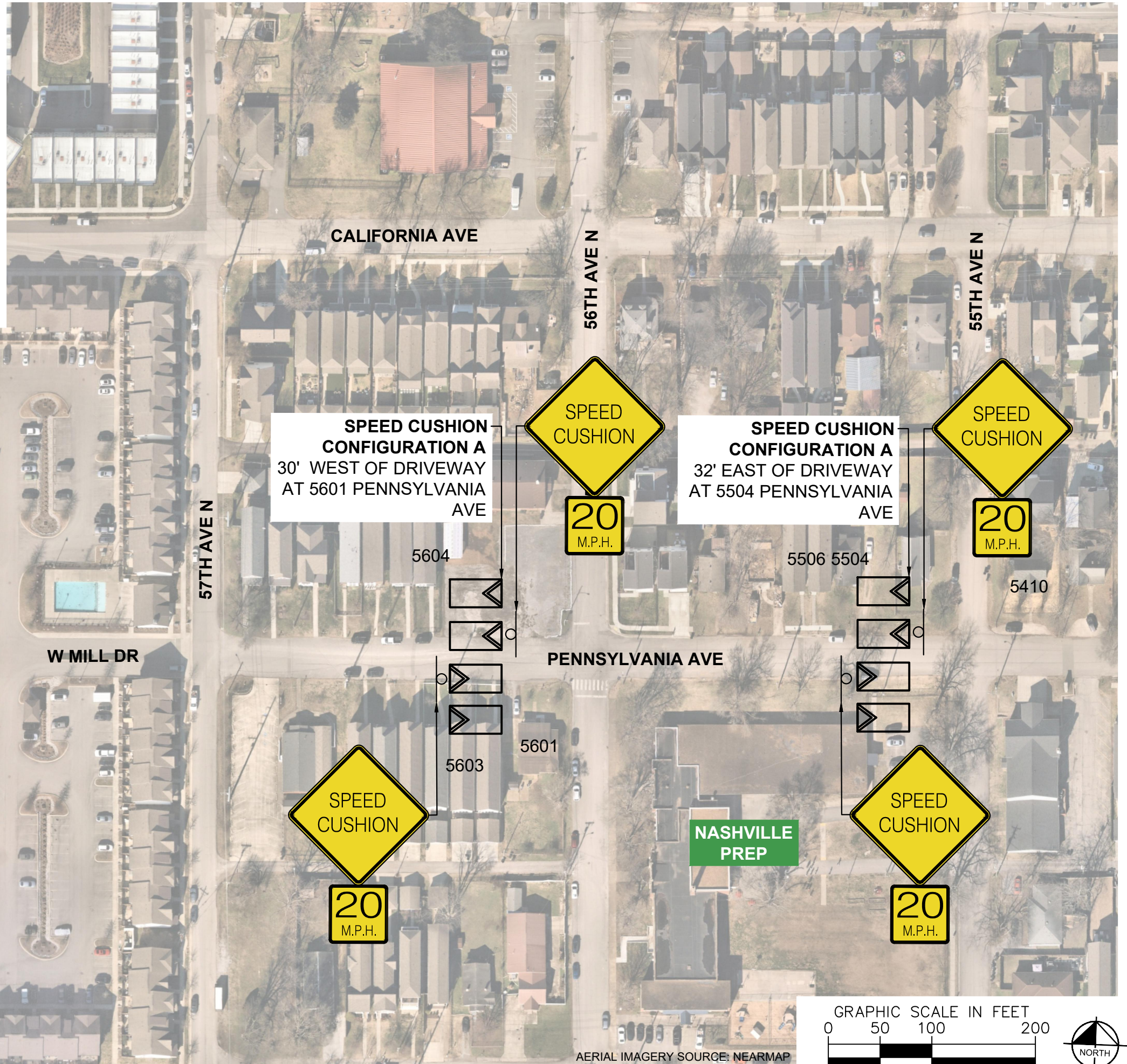
KEY

SHEET NUMBER
01

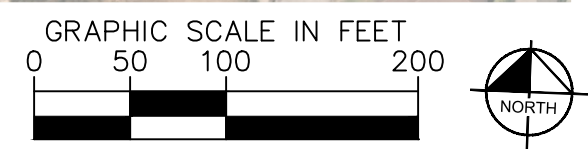


AERIAL IMAGERY SOURCE: NEARMAP

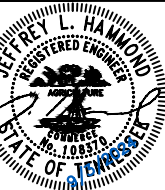
SPEED CUSHIONS



AERIAL IMAGERY SOURCE: NEARMAP



PENNSYLVANIA AVENUE
TRAFFIC CALMING
NASHVILLE, TN

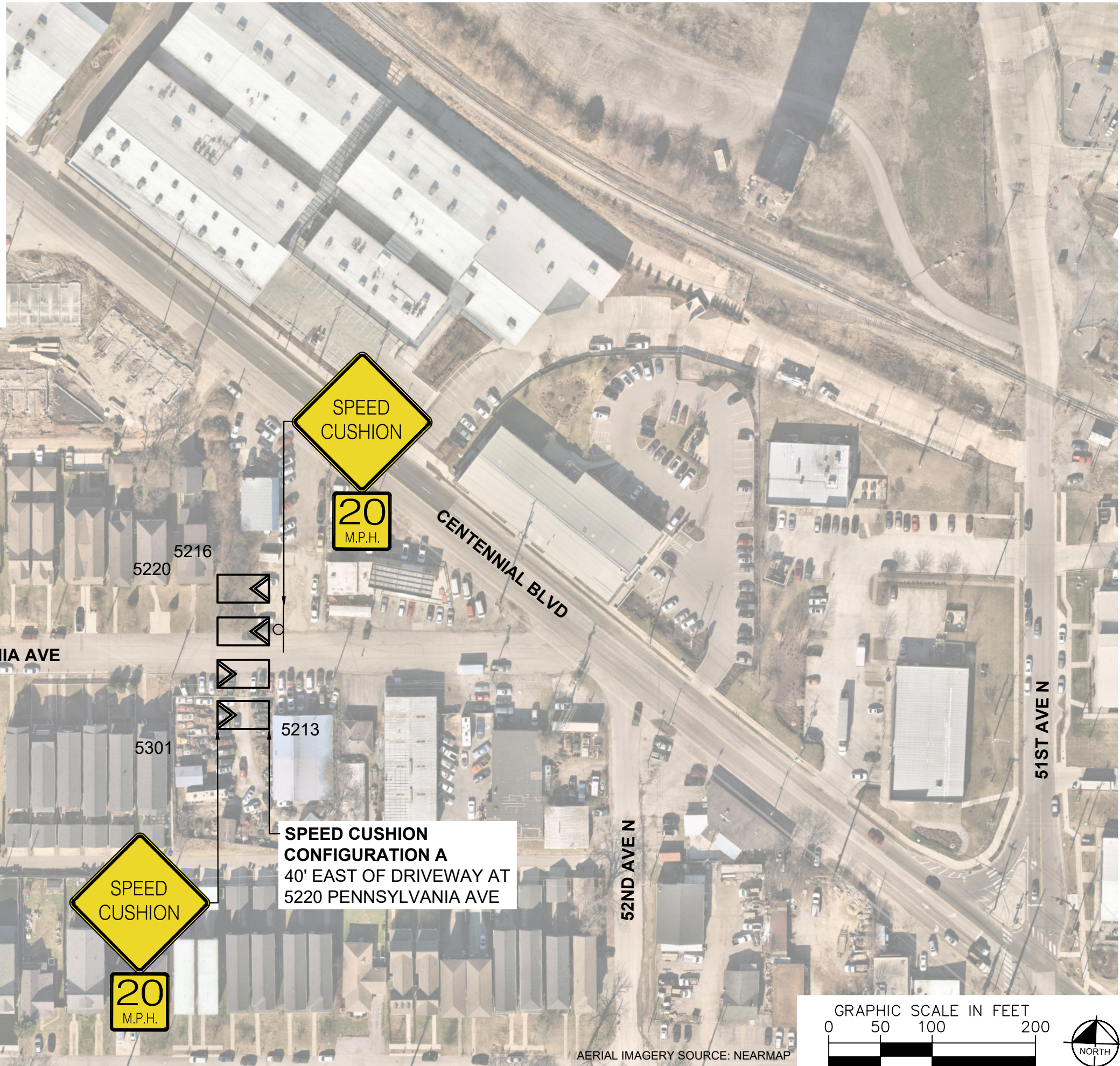


| | |
|--------------------------|-----------|
| DESIGNED BY: | JLH |
| DRAWN BY: | RJS |
| CHECKED BY: | NDOT |
| DATE: | 03/2024 |
| KIMLEY-HORN PROJECT NO.: | 118800051 |

CONCEPT

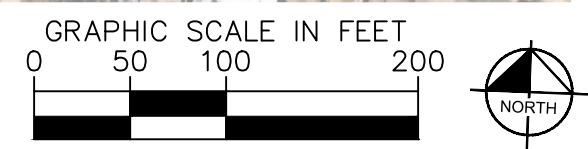
SHEET NUMBER
02

SPEED CUSHIONS



SPEED CUSHION CONFIGURATION A
63' EAST OF DRIVEWAY AT 5404 PENNSYLVANIA AVE

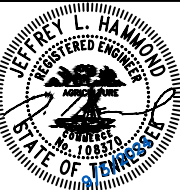
SPEED CUSHION CONFIGURATION A
40' EAST OF DRIVEWAY AT 5220 PENNSYLVANIA AVE



AERIAL IMAGERY SOURCE: NEARMAP



PENNSYLVANIA AVENUE
TRAFFIC CALMING
NASHVILLE, TN



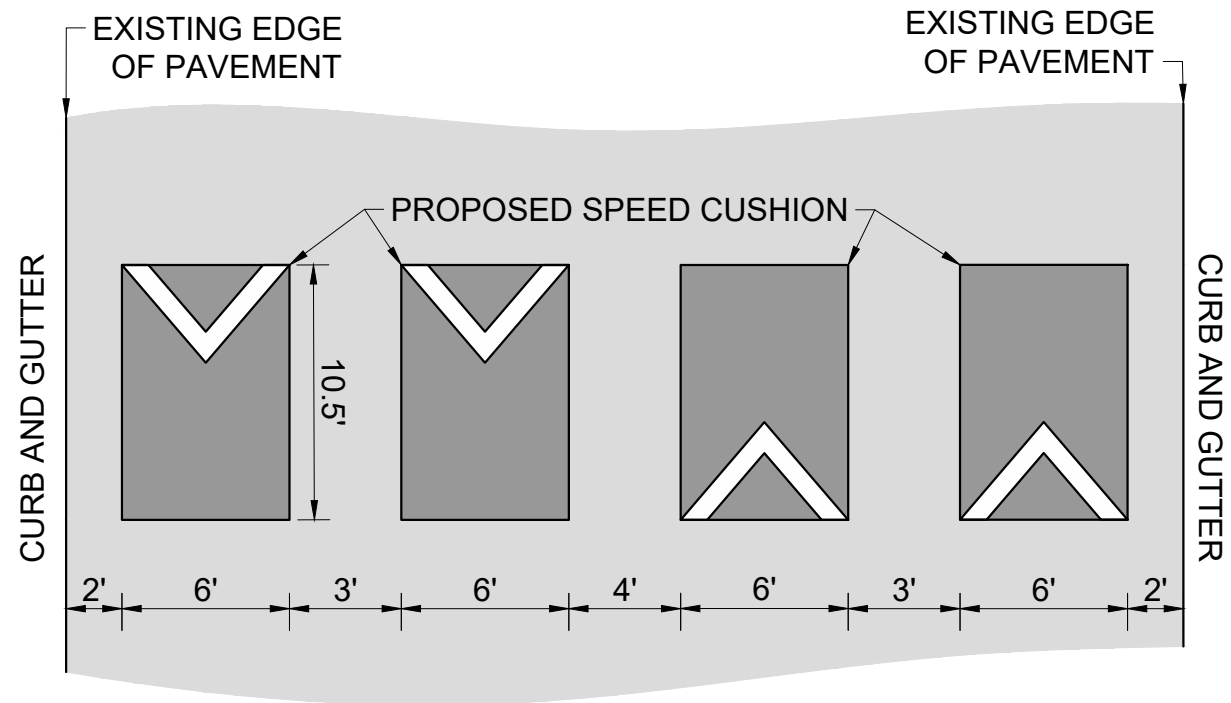
| | |
|-------------------------|-----------|
| DESIGNED BY: | JLH |
| DRAWN BY: | RJS |
| CHECKED BY: | NDOT |
| DATE: | 03/2024 |
| KIMLEY-HORN PROJECT NO. | 118800051 |

CONCEPT
SHEET NUMBER
03

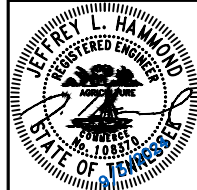
This document, together with the concepts and designs presented herein, is intended only for the specific purpose and client for which it was prepared. Reuse of and improper reliance on this document without written authorization and adaptation by Kimley-Horn and Associates, Inc. shall be without liability to Kimley-Horn and Associates, Inc.

CONFIGURATION A

PAVEMENT WIDTH: 38'



PENNSYLVANIA AVENUE
TRAFFIC CALMING
NASHVILLE, TN



DESIGNED BY: JLH
DRAWN BY: RJS
CHECKED BY: NDOT
DATE: 8/3/2024
KIMLEY-HORN PROJECT NO. 118800051

DETAIL

SHEET NUMBER
04

This document, together with the concepts and designs presented herein, is intended only for the specific purpose and client for which it was prepared. Reuse of and improper reliance on this document without written authorization and adaptation by Kimley-Horn and Associates, Inc. shall be without liability to Kimley-Horn and Associates, Inc.