

East Nashville Water Infrastructure Replacement (WIR) Project Multimodal Improvements

September 12th, 2024

NDOT

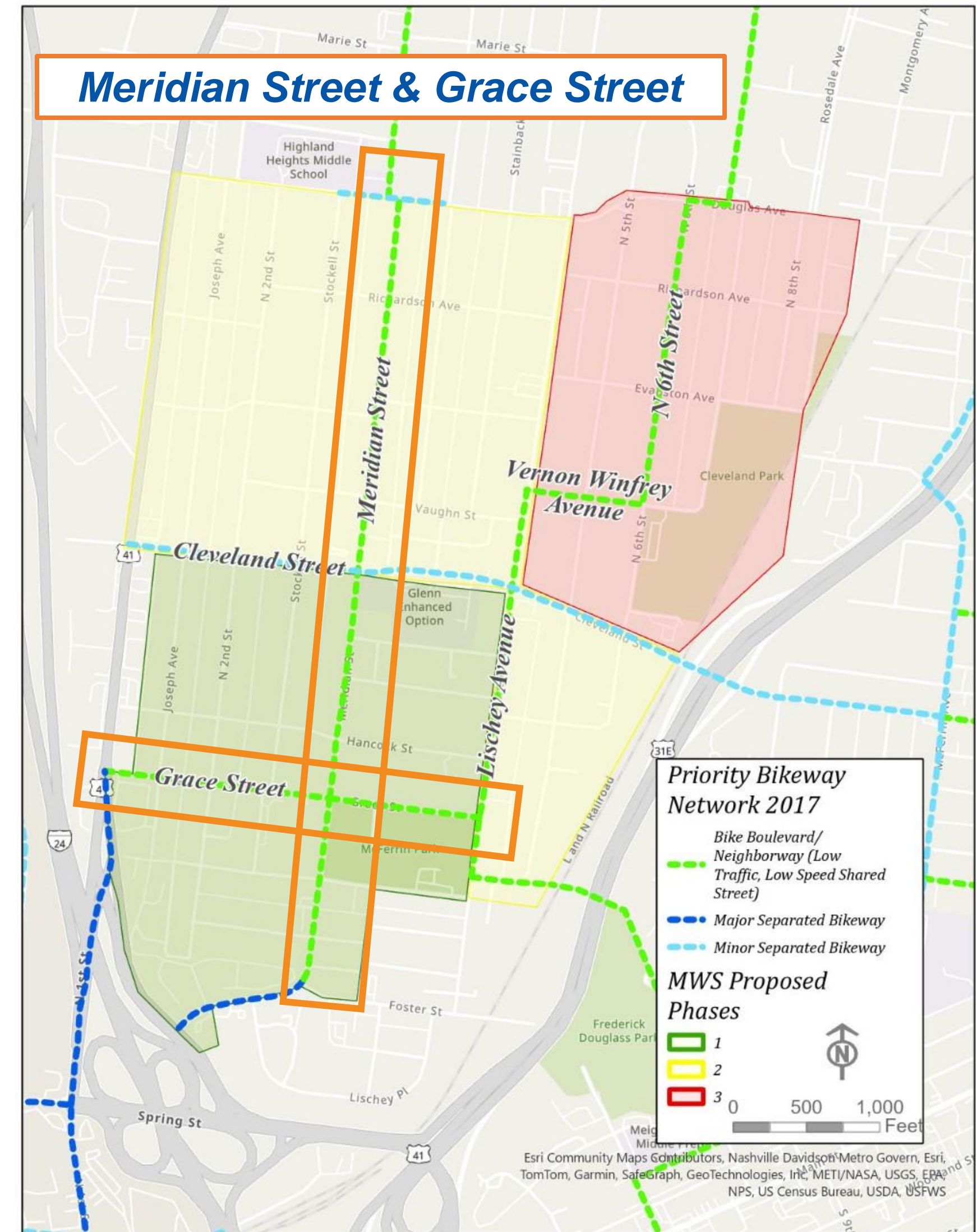


LDA ENGINEERING



Project Origin

- **Metro Water Services (MWS) Water Infrastructure Replacement**
 - Approximately 60,000 LF of water main replacement in the East Nash Community
 - Proposed construction in 3 phases
- **Project alignment with Priority Bikeway Network**
 - Opportunity to advance **mobility** and **accessibility** throughout the East Nash community



Initial Analysis

SAFETY

- Grace Street intersection with Dickerson Pike on **High Injury Network**
- Review **crash history** to determine appropriate safety improvements

+

CONNECTIVITY

- No existing bikeway facilities on Grace Street or Meridian Street
- Proposed Grace Street bikeway **connects to bike and transit routes** and destinations on Dickerson Pike

+

MOBILITY

- Intersections lack **pedestrian crossings** at some locations in the neighborhood
- Currently biking doesn't feel like a **safe, comfortable, and attractive option**



Potential Improvement Opportunities



CURB EXTENSIONS

- Reduce speeds through traffic calming
- Improve livability with potential for green space



BIKEWAYS

- Improved connectivity and mobility
- "Complete streets" increase mobility options and safety for everyone traveling



MOBILITY

- Enhanced visibility, safety, and comfort
- Improved access to transit and destinations

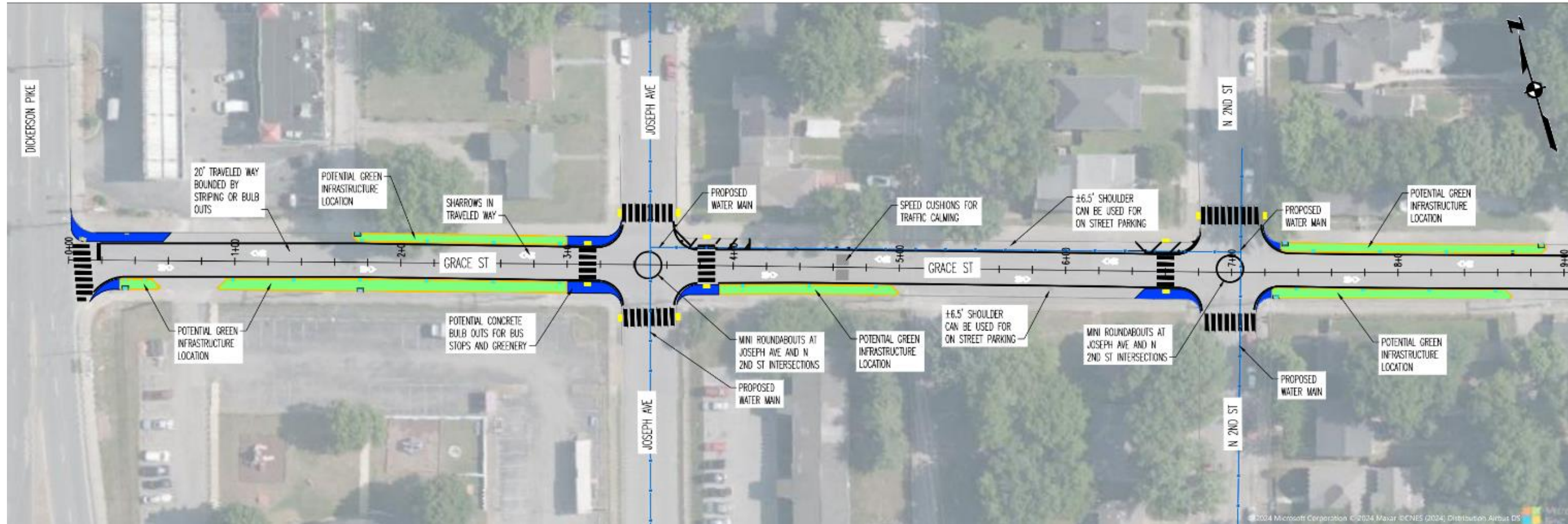


Planning Concept: Grace Street

- Bike Boulevard with Concrete Curb Extensions and Mini Roundabouts



Concrete Curb Extension Example



Grace Street Streetscape & Layout Example

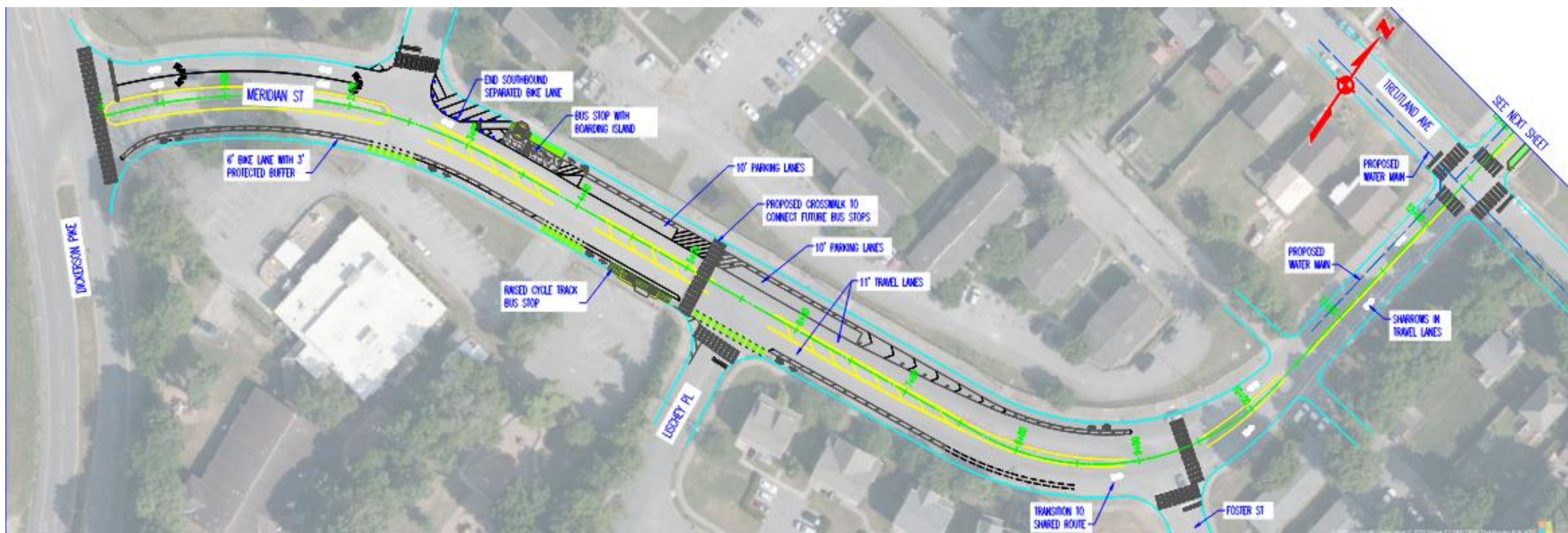


Mini Roundabout Example

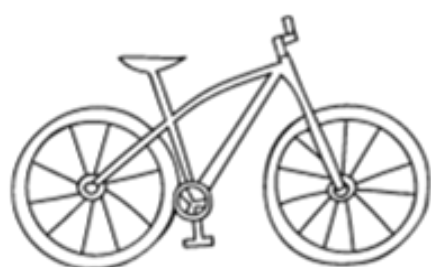


Planning Concept: Meridian Street

- Major Separated Bikeway to transition into Neighborway

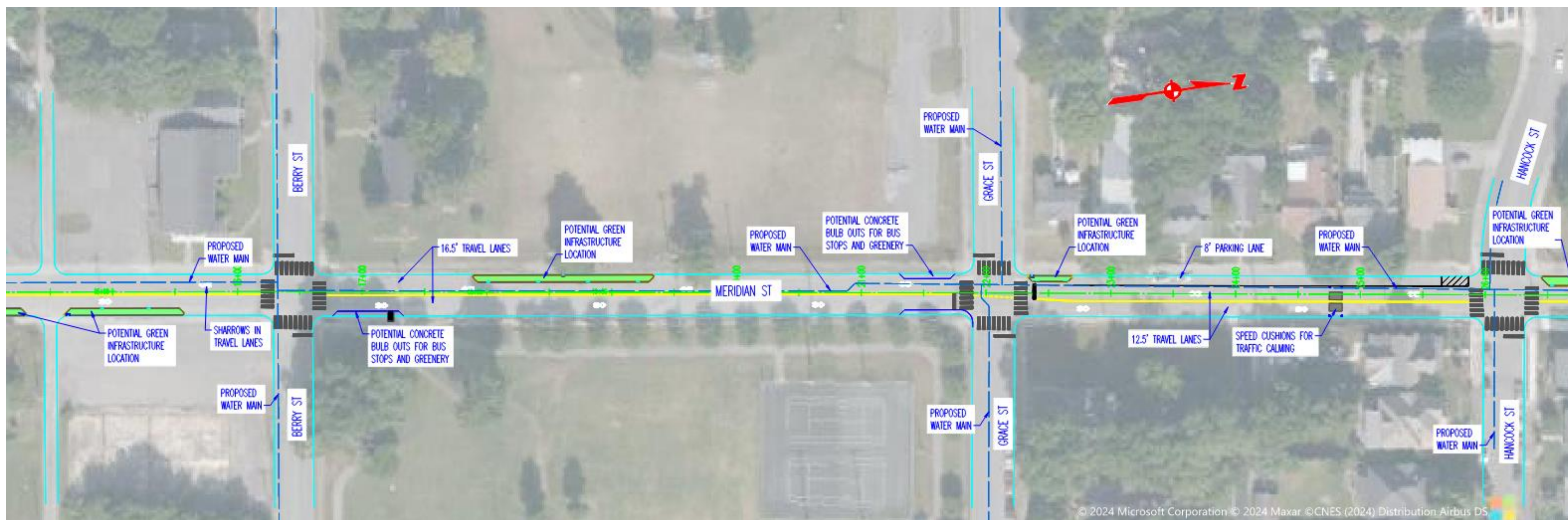


Meridian Street Layout Example 1

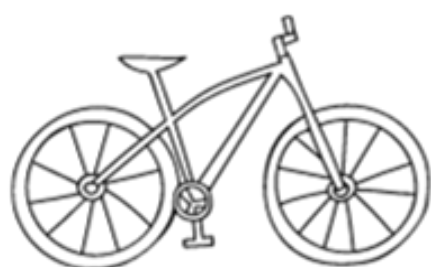


Planning Concept: Meridian Street

- Neighborway with Concrete Curb Extensions & Planters



Meridian Street Layout Example 2



Nashville's Transportation Improvement Program

CHOOSE
HOW YOU
MOVE



ALL-ACCESS
PASS

SIDEWALKS,
SIGNALS, SERVICE
& SAFETY

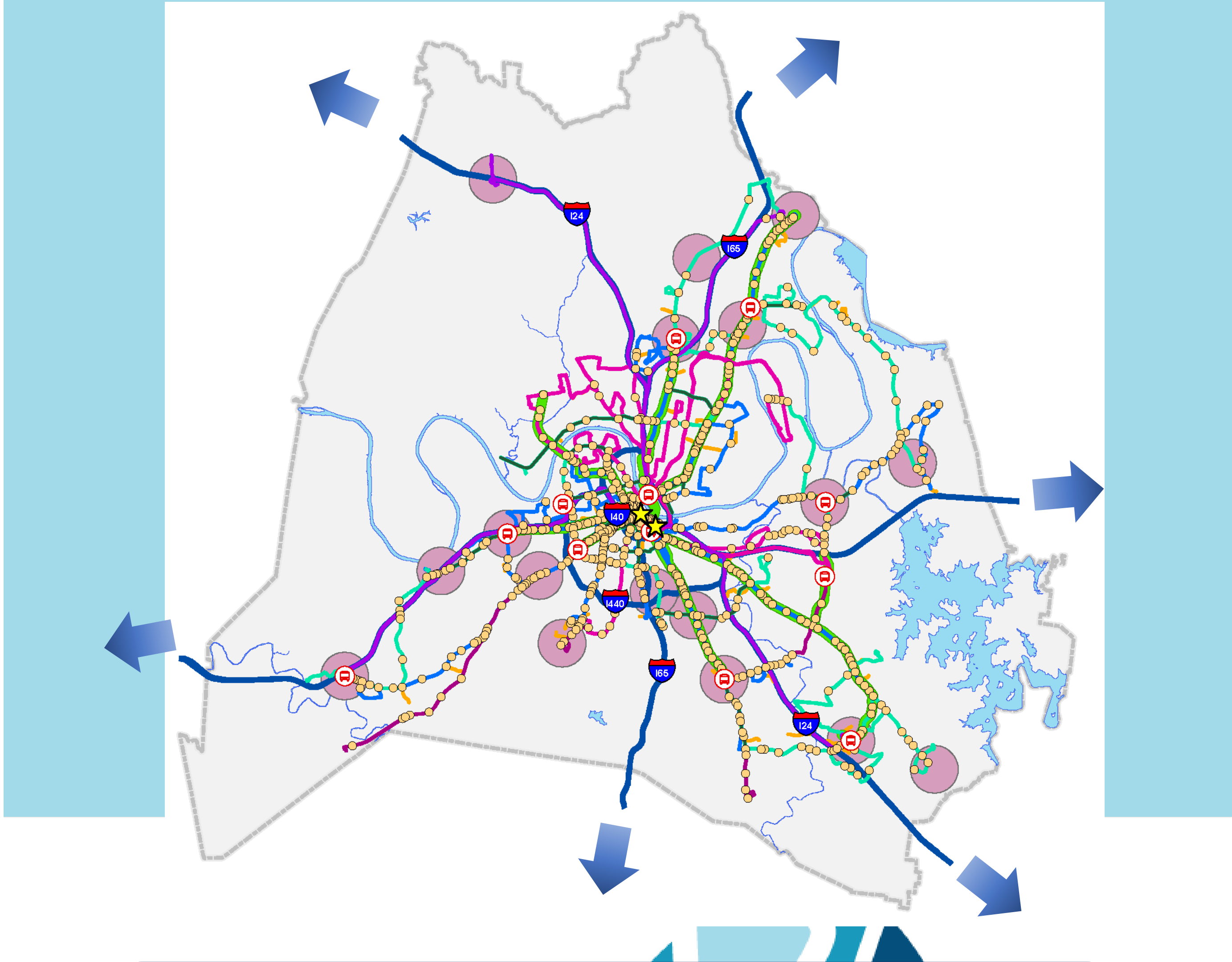


An isometric illustration of a city street scene. It features various buildings, including a tall modern skyscraper on the left, a multi-story office building with solar panels on the roof, a parking garage, a bus stop with a bus, a fountain in a park area, a cafe, and a restaurant. There are cars, a truck, and a motorcycle on the roads. The scene is set on a grid of streets with green spaces and trees.

CHOOSE HOW YOU MOVE

Voters **Decide**
November 5

- Completes the Priority **Sidewalk** Network when combined with annual capital spending
- Upgrades nearly 600 Traffic **Signals**
- 24/7/365 and Expanded Transit **Service**
- Improves **Safety** for All Users



	Sidewalks		Service
	Signals		Safety

Thank you!

NDOT



LDA ENGINEERING

