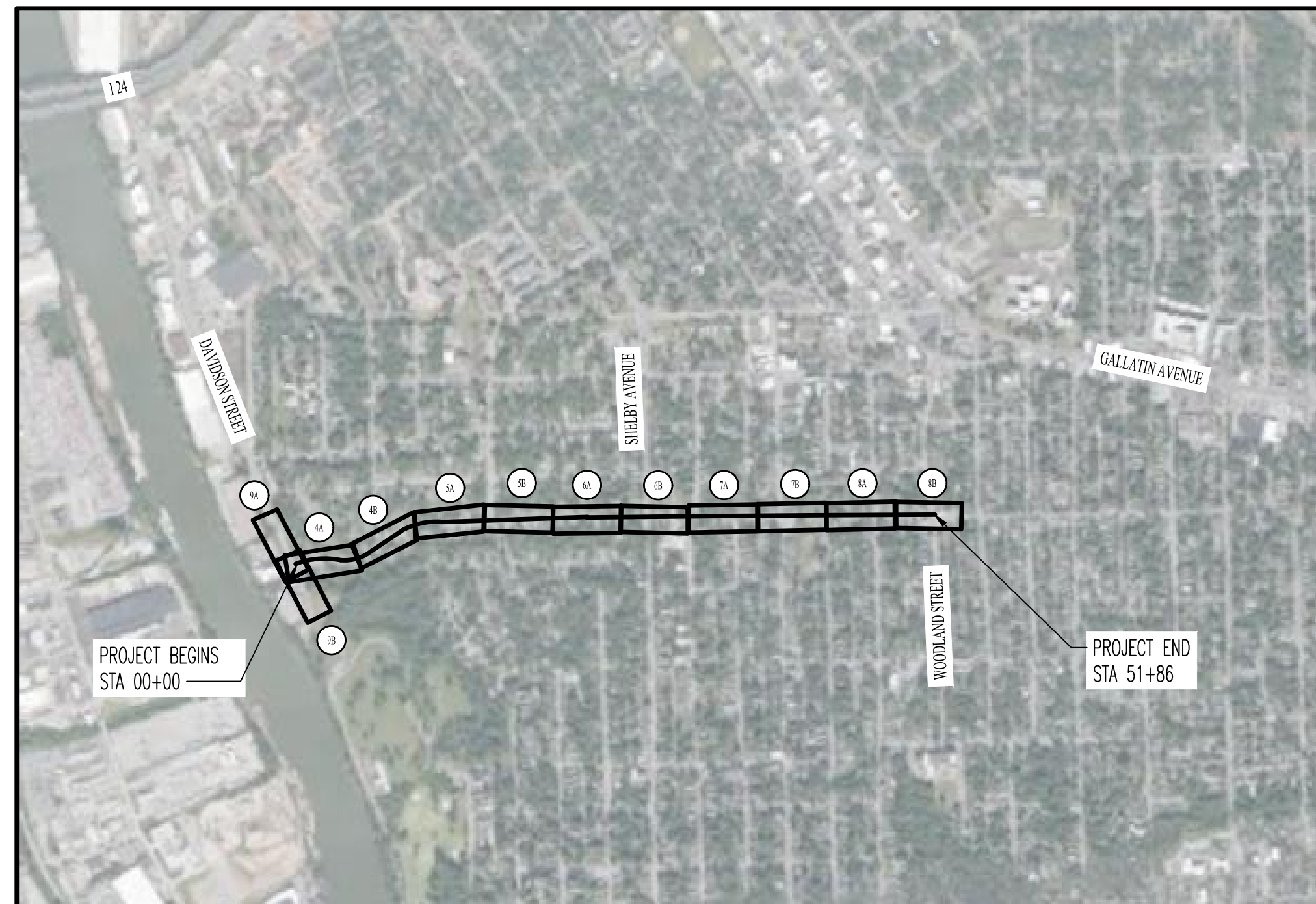


METROPOLITAN GOVERNMENT OF NASHVILLE AND DAVIDSON COUNTY, TENNESSEE

SOUTH 14TH STREET BIKEWAY IMPROVEMENTS FROM DAVIDSON STREET TO WOODLAND STREET SEPTEMBER 2023



LOCATION MAP
SCALE: 1"=1000'

DRAWING INDEX

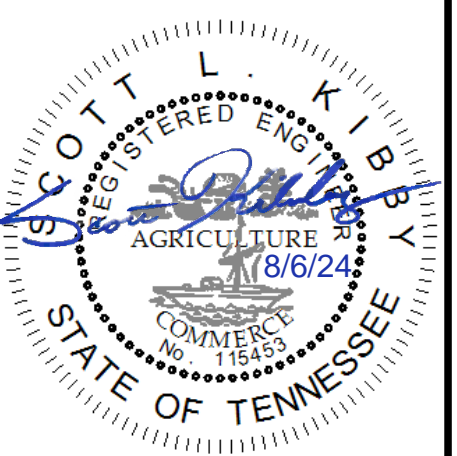
1. COVER SHEET
2. TYPICAL DETAILS
3. TYPICAL DETAILS
4. PROPOSED LAYOUT
5. PROPOSED LAYOUT
6. PROPOSED LAYOUT
7. PROPOSED LAYOUT
8. PROPOSED LAYOUT
9. PROPOSED LAYOUT



LDA ENGINEERING

REV	DATE	REVISION DESCRIPTION
1	04/24/24	ISSUE FOR PERMITS AND BIDDING
2	08/04/24	REVISIONS FOR PERMITS AND BIDDING

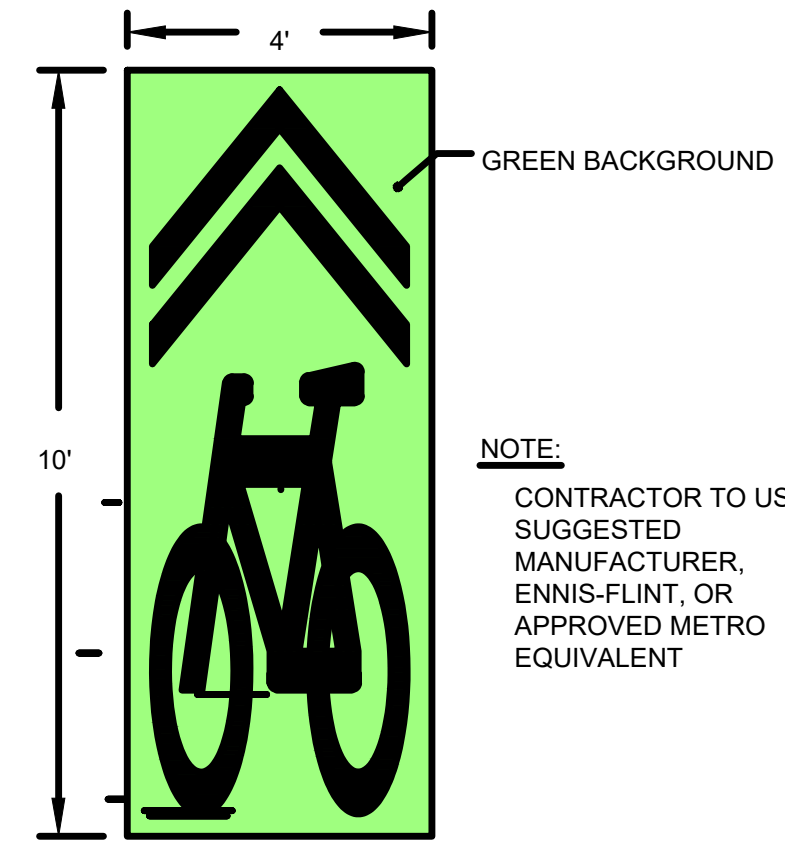
METROPOLITAN GOVERNMENT OF NASHVILLE
AND DAVIDSON COUNTY, TENNESSEE
SOUTH 14TH STREET BIKEWAY IMPROVEMENTS
FROM DAVIDSON STREET TO WOODLAND STREET



PROJECT NUMBER: MET008	
DATE: 9-2023	SCALE: 1"=20'
DRAWN BY: JEP	DESIGNED BY: ZDB

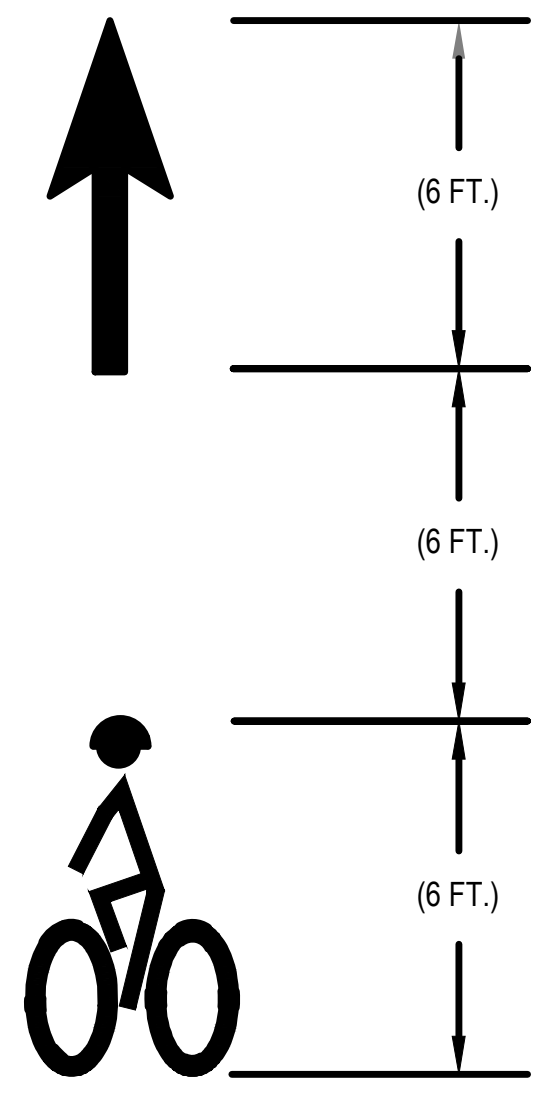
SHEET TITLE:
COVER SHEET

LDA ENGINEERING
402 BNA DRIVE SUITE 403
NASHVILLE, TENNESSEE 37217
TELEPHONE: 877-754-8254
FAX: 865-573-1352



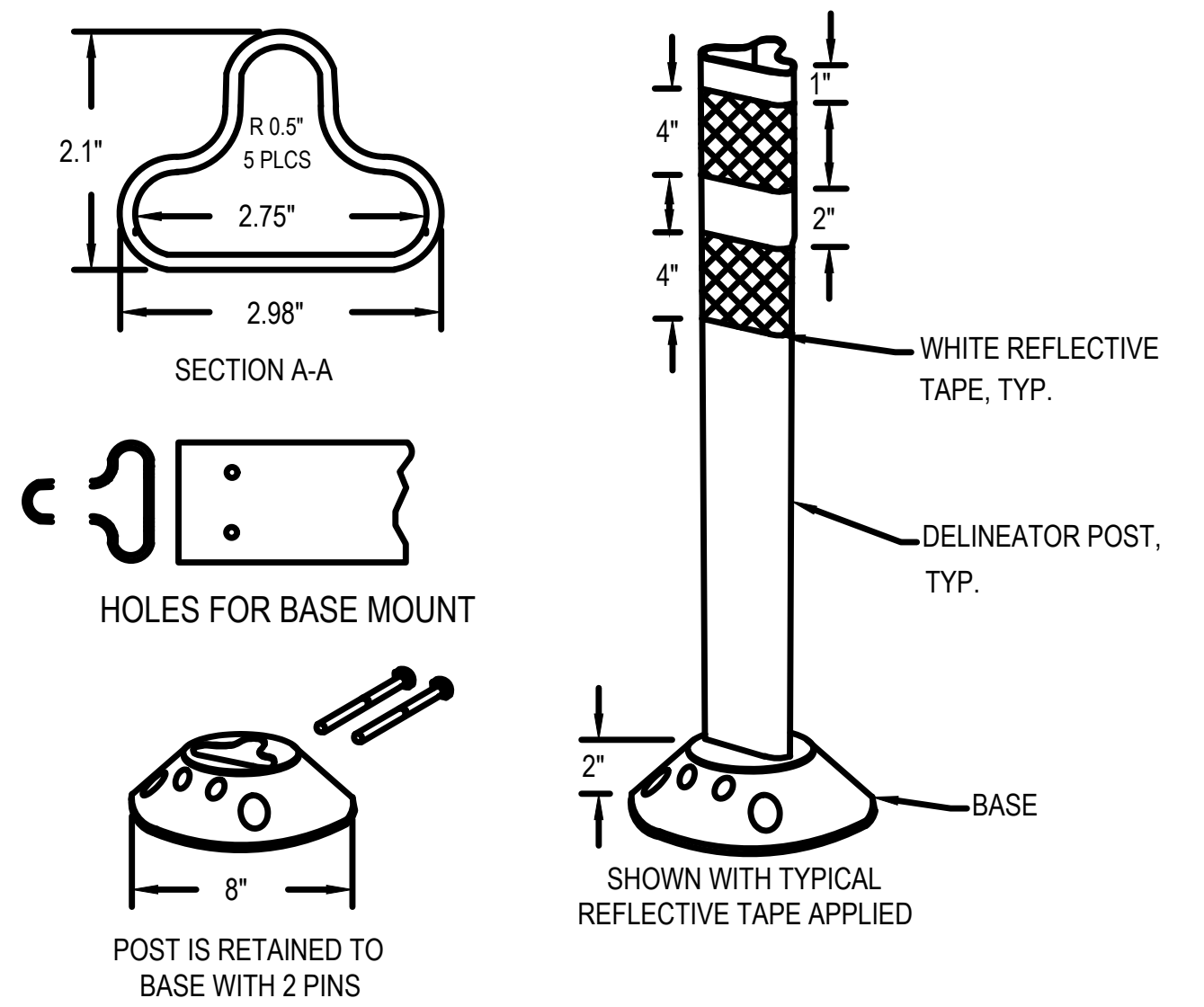
**SHARROW W/ GREEN BACK
GROUND PAVEMENT MARKING
DETAIL**
NOT TO SCALE

NOTE:
CONTRACTOR TO USE
SUGGESTED
MANUFACTURER,
ENNIS-FLINT, OR
APPROVED METRO
EQUIVALENT



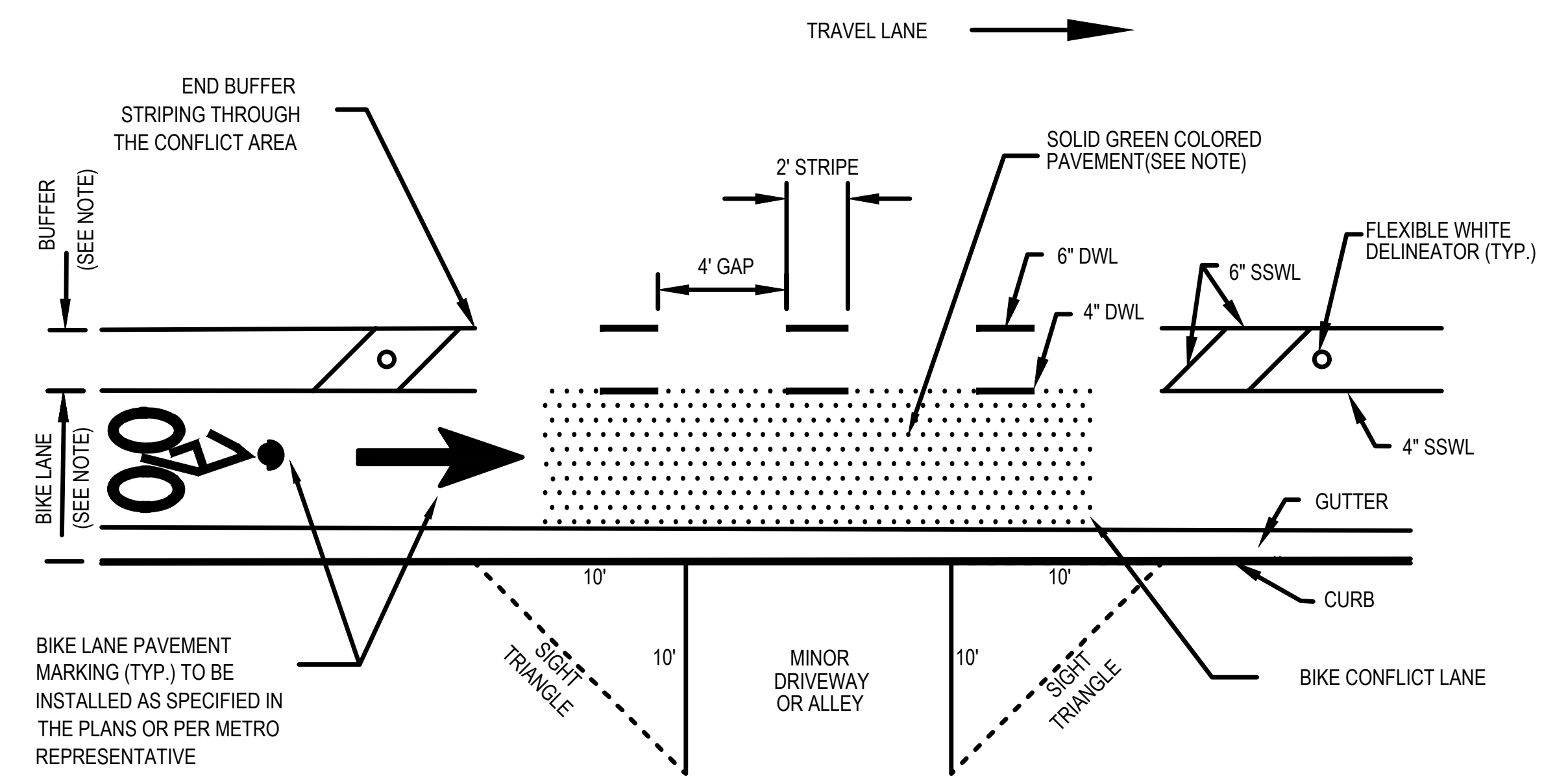
**BIKE LANE PAVEMENT MARKING
DETAIL**
NOT TO SCALE

NOTE:
REFER TO MUTCD 2009 EDITION PART 9 FIGURE 9C-3
WORD, SYMBOL, AND ARROW PAVEMENT MARKINGS FOR
BICYCLE LANES. REDUCED SIZE MARKINGS TO BE USED
WHERE REQUIRED IN THE FIELD, SCALE AS NEEDED.



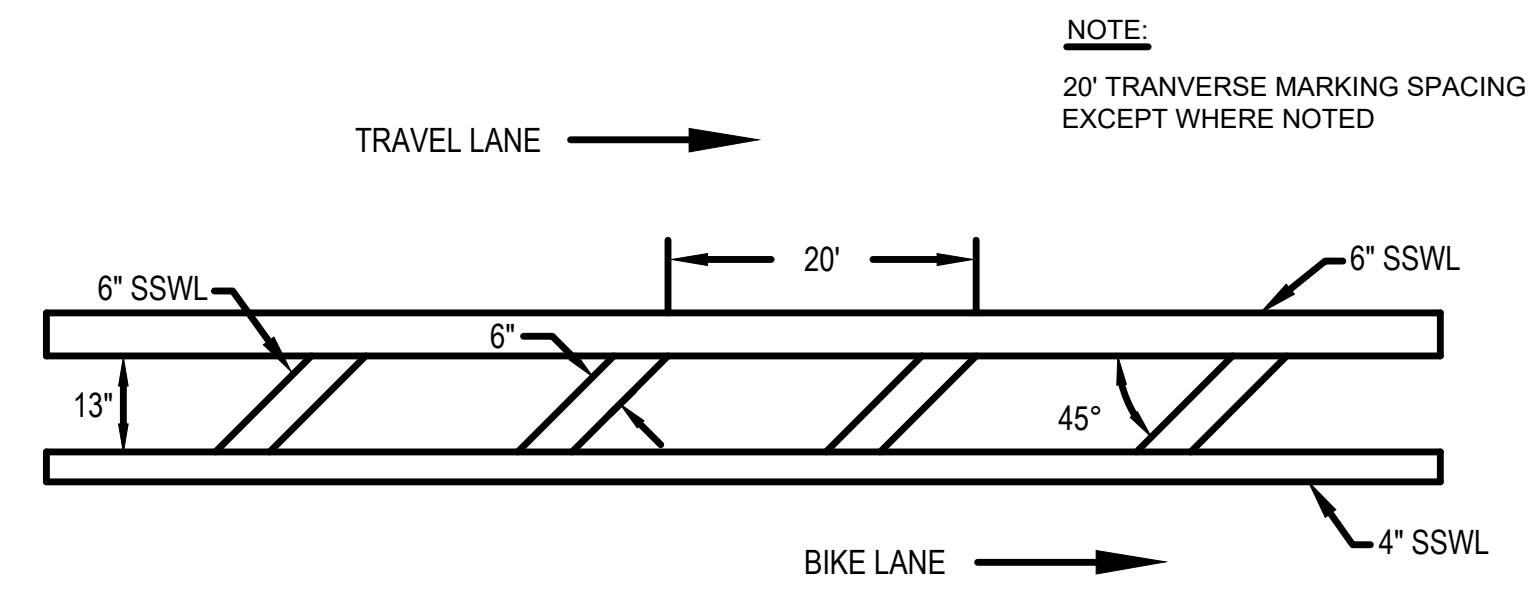
- NOTES:**
- INSTALLATION TO BE COMPLETED IN ACCORDANCE WITH MANUFACTURER'S SPECIFICATIONS.
 - DIMENSIONS, MATERIALS, AND ATTACHMENTS MAY VARY BETWEEN MANUFACTURERS.
 - COLOR OF POST SHALL MATCH COLOR OF APPLICABLE EDGE LINE AS NOTED IN PLANS.
 - SUGGESTED MANUFACTURERS INCLUDE: PEXCO DAVIDSON TRAFFIC CONTROL, SUPERIOR TRAFFIC CONTROL OR APPROVED BY METRO REPRESENTATIVE
 - DELINEATORS SHALL BE SPACED 10' CENTER-TO-CENTER IN THE PLANS
 - CONTRACTOR TO COORDINATE WITH MPW PRIOR TO INSTALLATION.

36" FLEXIBLE DELINEATOR POST DETAIL
NOT TO SCALE



**SIGHT TRIANGLE & BIKE CONFLICT LINE
(BCL) DETAIL AT DRIVEWAYS/ALLEYS**
NOT TO SCALE

NOTE:
SOLID GREEN COLORED
PAVEMENT IS NOT REQUIRED AT
DRIVEWAY LOCATIONS BUT MAY
BE INSTALLED AS NEEDED (SEE
PLANS).



BIKE LANE BUFFER PAVEMENT MARKINGS
NOT TO SCALE

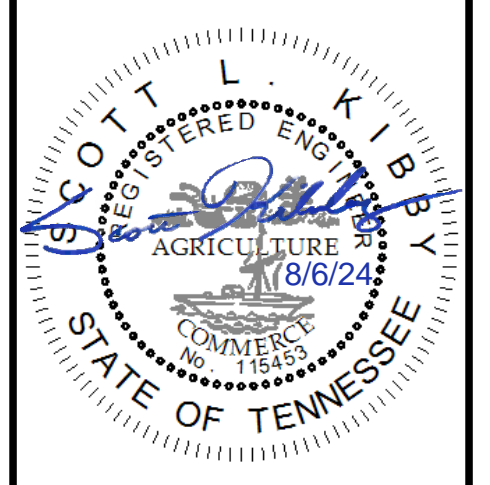
NOTE:
20' TRANSVERSE MARKING SPACING
EXCEPT WHERE NOTED



LDA ENGINEERING

REV	DATE	REVISION DESCRIPTION
1	04/23/24	ISSUE FOR PERMITS
2		

METROPOLITAN GOVERNMENT OF NASHVILLE
AND DAVIDSON COUNTY, TENNESSEE
SOUTH 14TH STREET BIKEWAY IMPROVEMENTS
FROM DAVIDSON STREET TO WOODLAND STREET



PROJECT NUMBER: MET008
DATE: 9-2023 SCALE: 1"=20'
DRAWN BY: JEP DESIGNED BY: ZDB

SHEET TITLE:
TYPICAL DETAILS

C:\SHW\1_P01_006_2023-COA\DESIGN\SUBSET\DWG\SHEET FILES\MET002_5_14R1_ST_DETALS.DWG, 9/5/2024 11:24 AM, JAMES PICKERING



PARALLEL AND BIKELANE INDICATIONS
INDICATE EXISTING MARKINGS WITH SHED
COURTESY OF METRO

REVISION DESCRIPTION
DATE
REV

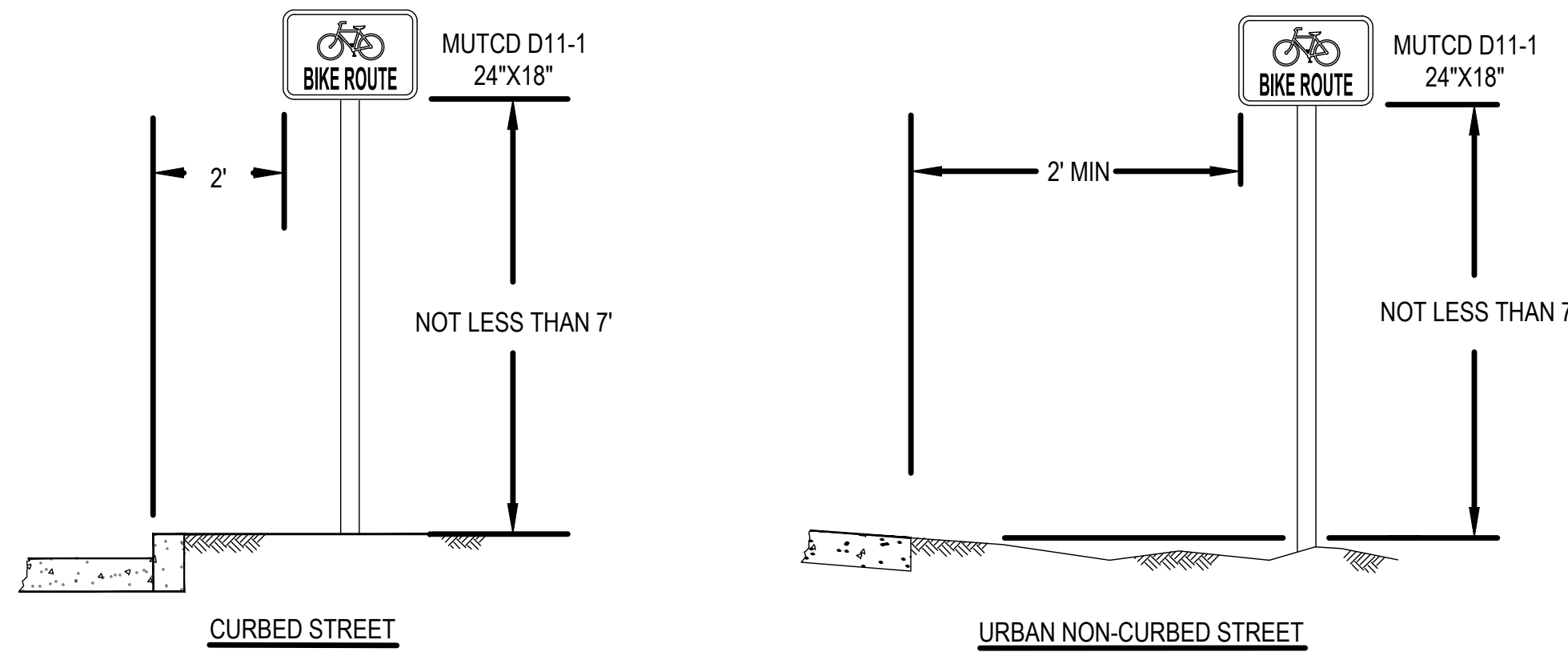
REV	DATE	DESCRIPTION
1	04/23/24	
2	08/06/24	

METROPOLITAN GOVERNMENT OF NASHVILLE
AND DAVIDSON COUNTY, TENNESSEE
SOUTH 14TH STREET BIKEWAY IMPROVEMENTS
FROM DAVIDSON STREET TO WOODLAND STREET



PROJECT NUMBER: MET008
DATE: 9-2023 SCALE: 1"=20'
DRAWN BY: JEP DESIGNED BY: ZDB

SHEET TITLE:
DETAILS



HEIGHT AND LATERAL LOCATION OF SIGNS - TYPICAL INSTALLATIONS

SIGN INSTALLATION NOTES:

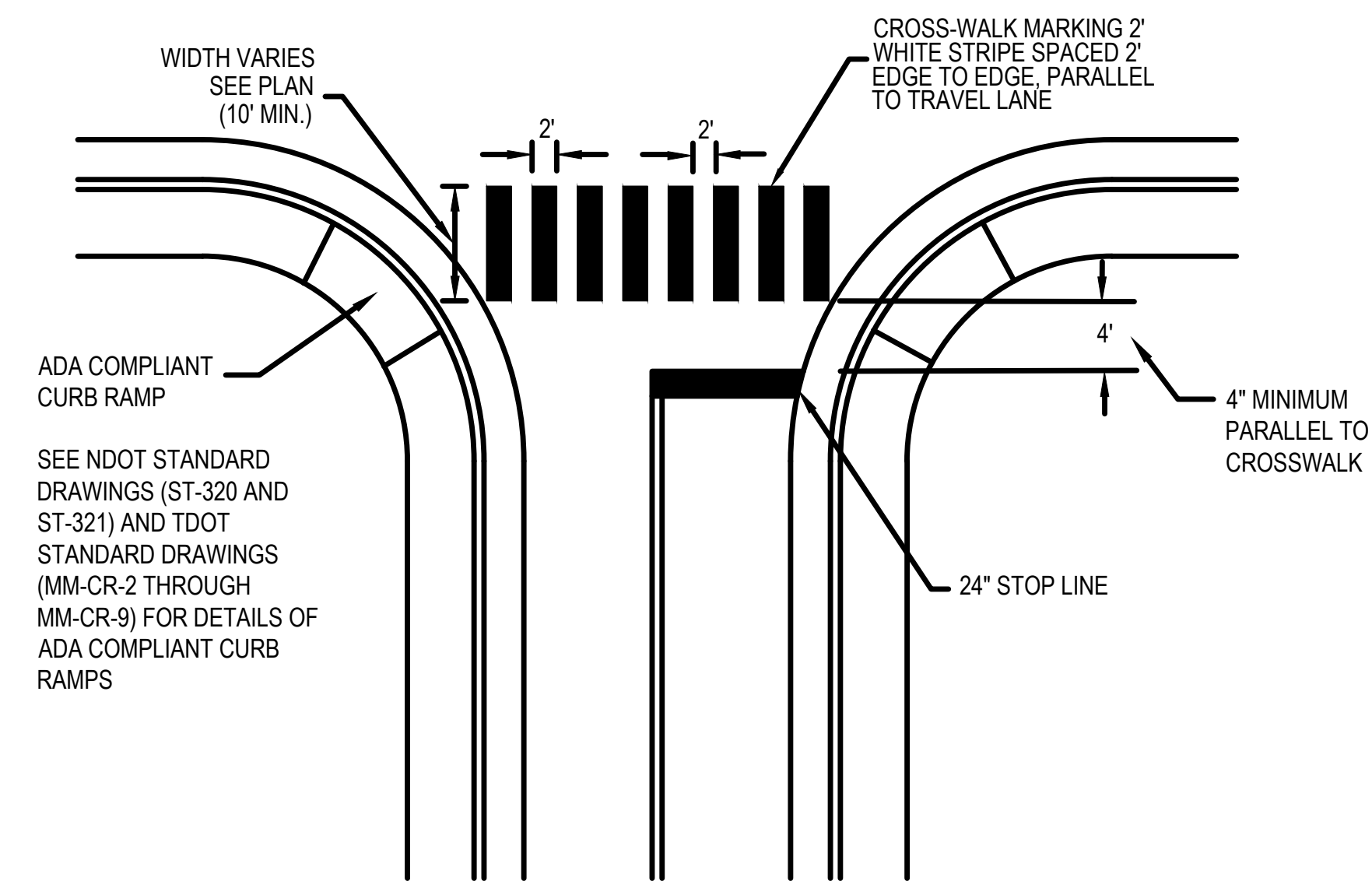
- ALL SIGNS SHALL BE INSTALLED IN THE APPROXIMATE LOCATIONS SHOWN ON PLAN SHEETS. ANY DEVIATION MUST BE APPROVED BY THE METROPOLITAN DEPARTMENT OF PUBLIC WORKS.
- SIGNS SHALL BE INSTALLED IN STRICT ACCORDANCE WITH THE CURRENT EDITION OF THE MANUAL ON UNIFORM TRAFFIC CONTROL DEVICES (2009 MUTCD, WITH REVISIONS 1, 2, & 3), AND SHALL HAVE THE HEIGHT AND CLEARANCE SPECIFICATIONS SHOWN ON THIS SHEET.
- ALL SIGNING EQUIPMENT AND INSTALLATION PROCEDURES SHALL COMPLY WITH THE T.D.O.T. STANDARD SPECIFICATIONS FOR ROAD AND BRIDGE CONSTRUCTION, SECTION 713 - HIGHWAY SIGNING, AND WITH THE SPECIFICATIONS OF METROPOLITAN NASHVILLE AND DAVIDSON COUNTY.

HEIGHT AND LATERAL LOCATION OF SIGNS - TYPICAL INSTALLATIONS

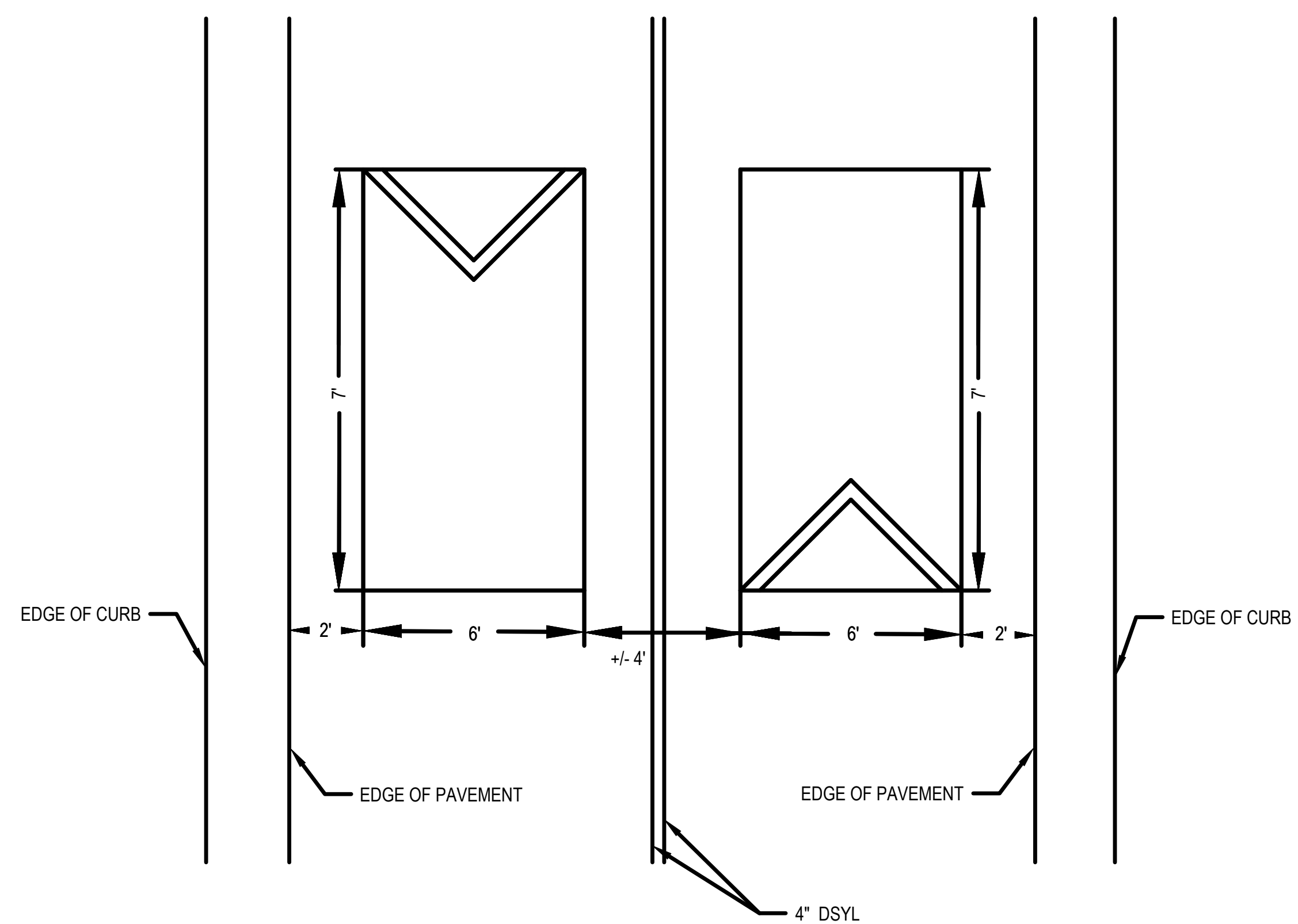
NOT TO SCALE

**SPECIAL NOTES:

- ALL PAVEMENT MARKINGS AND SIGNAGE SHALL BE IN ACCORDANCE WITH THE CURRENT EDITION OF "MANUAL ON UNIFORM TRAFFIC CONTROL DEVICES" (2009 MUTCD, WITH REVISIONS 1, 2, & 3)
- CONTRACTOR IS RESPONSIBLE FOR INSTALLATION OF ROADWAY MARKINGS AND SIGNS.
- BIKEWAY SIGNAGE SHALL BE PLACED PER DIRECTION OF THE FIELD ENGINEER.
- SHARROW AND BIKE LANE PAVEMENT MARKING SHALL BE PLACED PER DIRECTION OF METRO REPRESENTATIVE.
- SHARROW AND BIKE LANE PAVEMENT MARKING SHALL NOT BE PLACED IN FRONT OF DRIVEWAYS.
- BIKEWAY PROJECTS SHALL COORDINATE WITH METRO TRAFFIC DEPARTMENT.

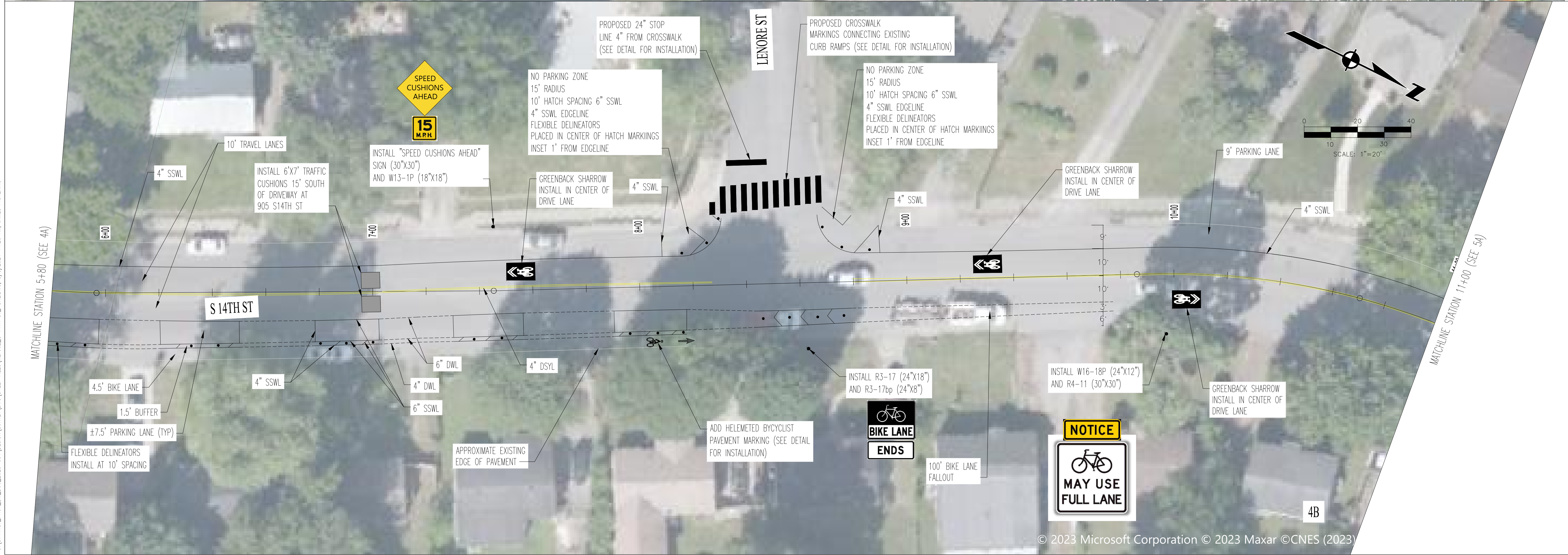
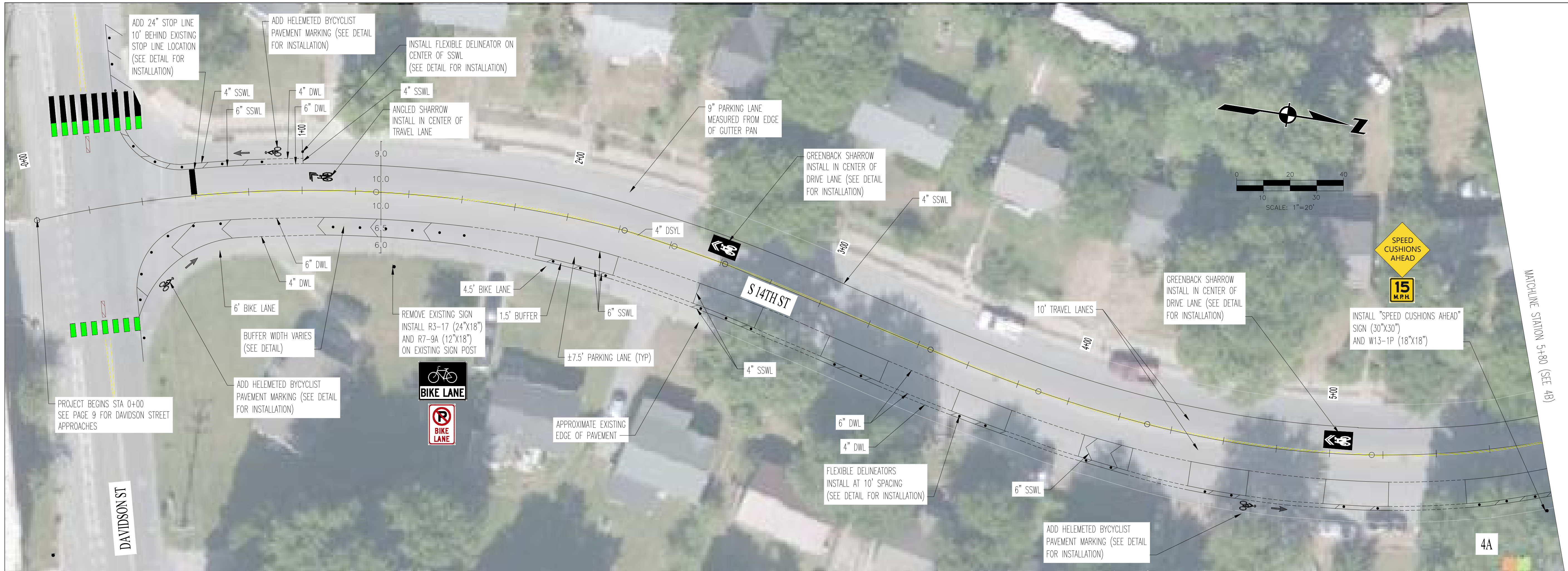


TYPICAL STOP LINE PLACEMENT AND CROSSWALK MARKINGS
NOT TO SCALE



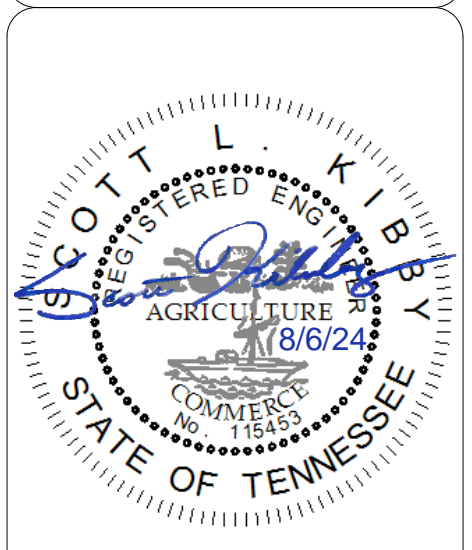
SPEED CUSHION DETAIL
NOT TO SCALE

C:\SHEET_PHOTO_2023-COA\DESIGN\SURVEY\DWG\SHEET FILES\MET002_3_14TH_ST_DETALS.DWG, 9/5/2024 11:25 AM, JAMES PICKERING



REV	DATE	REVISION DESCRIPTION
1		
2		

METROPOLITAN GOVERNMENT OF NASHVILLE
AND DAVIDSON COUNTY, TENNESSEE
SOUTH 14TH STREET BIKEWAY IMPROVEMENTS
FROM DAVIDSON STREET TO WOODLAND STREET



PROJECT NUMBER:	MET008
DATE:	9-2023
DRAWN BY:	JEP
DESIGNED BY:	ZDB
SHEET TITLE:	PROPOSED LAYOUT
SHEET	4 OF 9

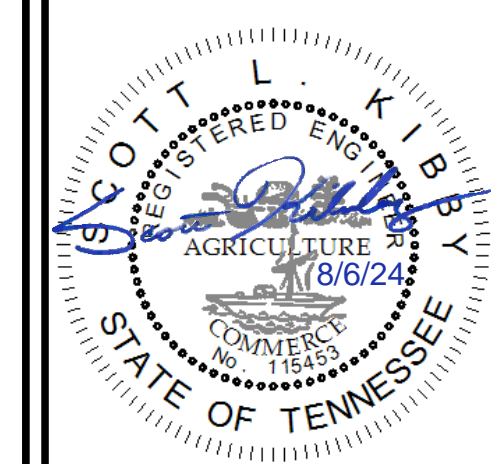
C:\S\14TH_ST_FINAL_006_2023-09-05\CONSTRUCTION\DWG\SHEET FILES\MET008_S_14TH_ST_SHEET.DWG, 8/15/2024 11:25 AM, JAMES PROKING



LDA ENGINEERING

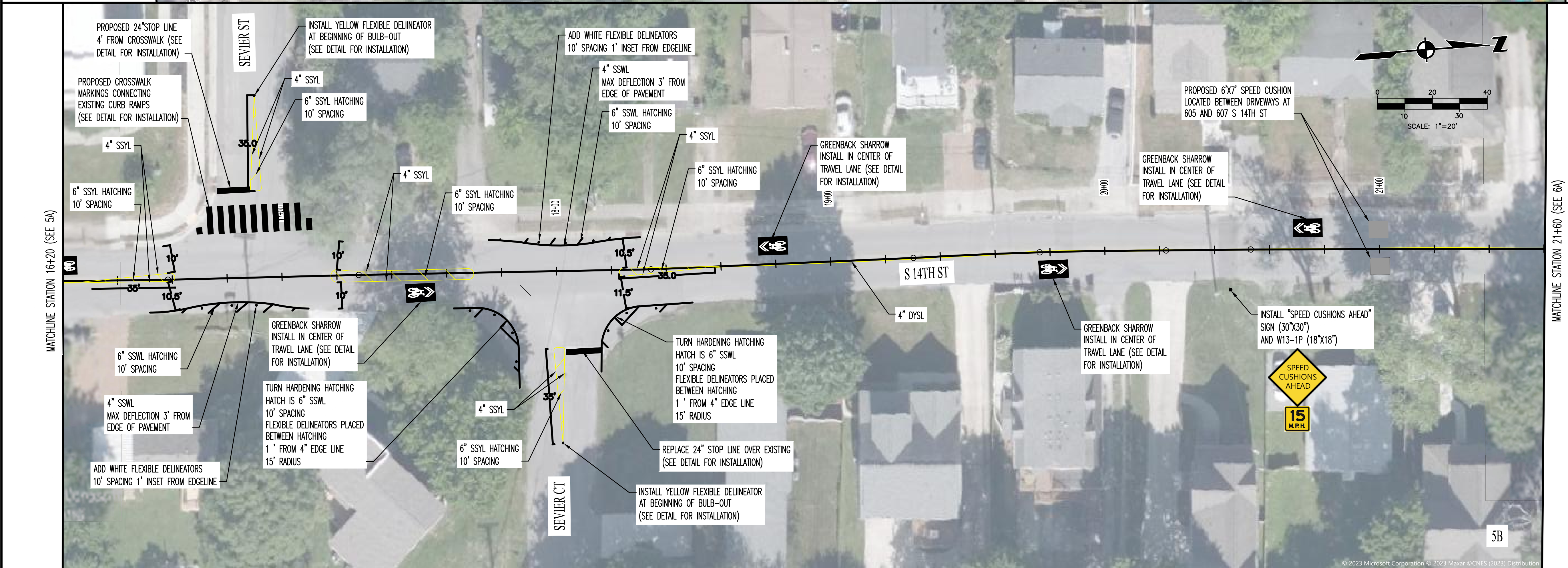
REV	DATE	REVISION DESCRIPTION
1	04/23/24	ISSUE FOR PERMITS AND FIELD CONSTRUCTION
2		REVISION

METROPOLITAN GOVERNMENT OF NASHVILLE
AND DAVIDSON COUNTY, TENNESSEE
SOUTH 14TH STREET BIKEWAY IMPROVEMENTS
FROM DAVIDSON STREET TO WOODLAND STREET



PROJECT NUMBER: MET008
DATE: 9-2023 SCALE: 1"=20'
DRAWN BY: JEP DESIGNED BY: ZDB

SHEET TITLE:
PROPOSED LAYOUT



C:\SHSHEET_PLOT_BWL_006_2023-COA\DESIGN\SUBSET\DWG\SHEET FILES\MET008_5_14TH_ST_SHEET.DWG, 8/5/2024 11:26 AM, JAMES PROCKING

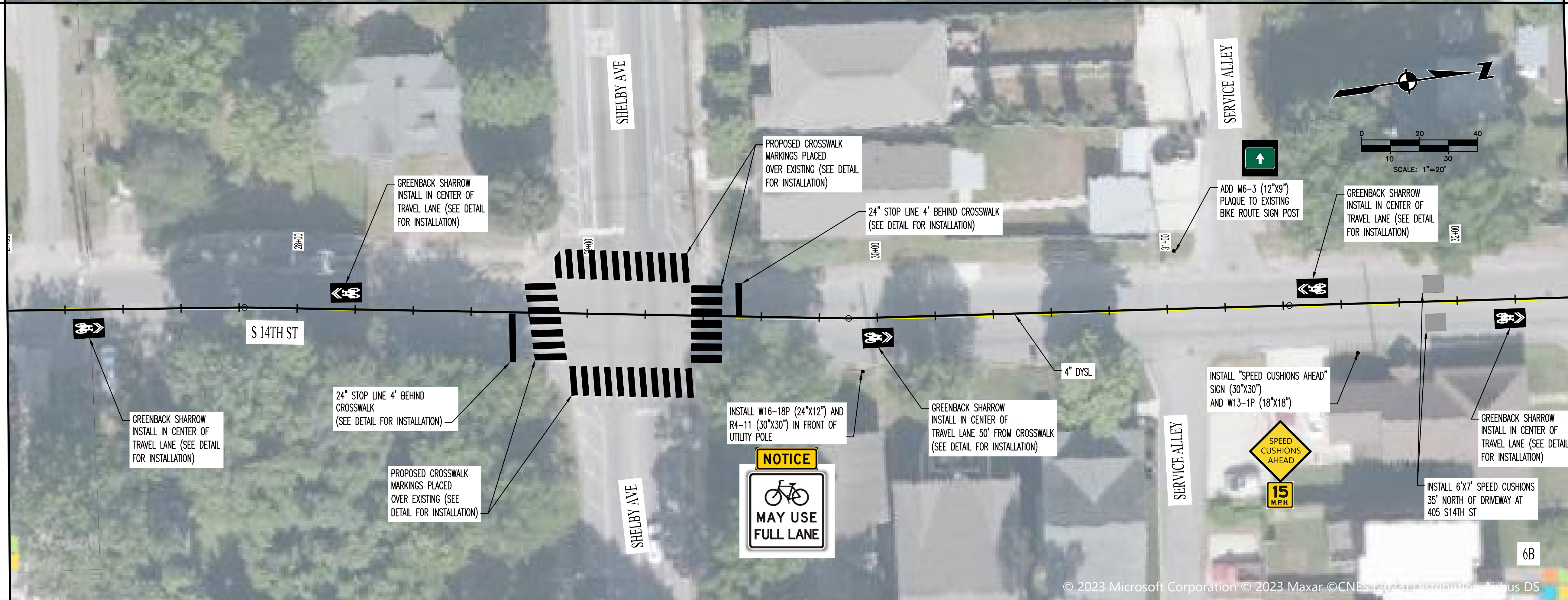
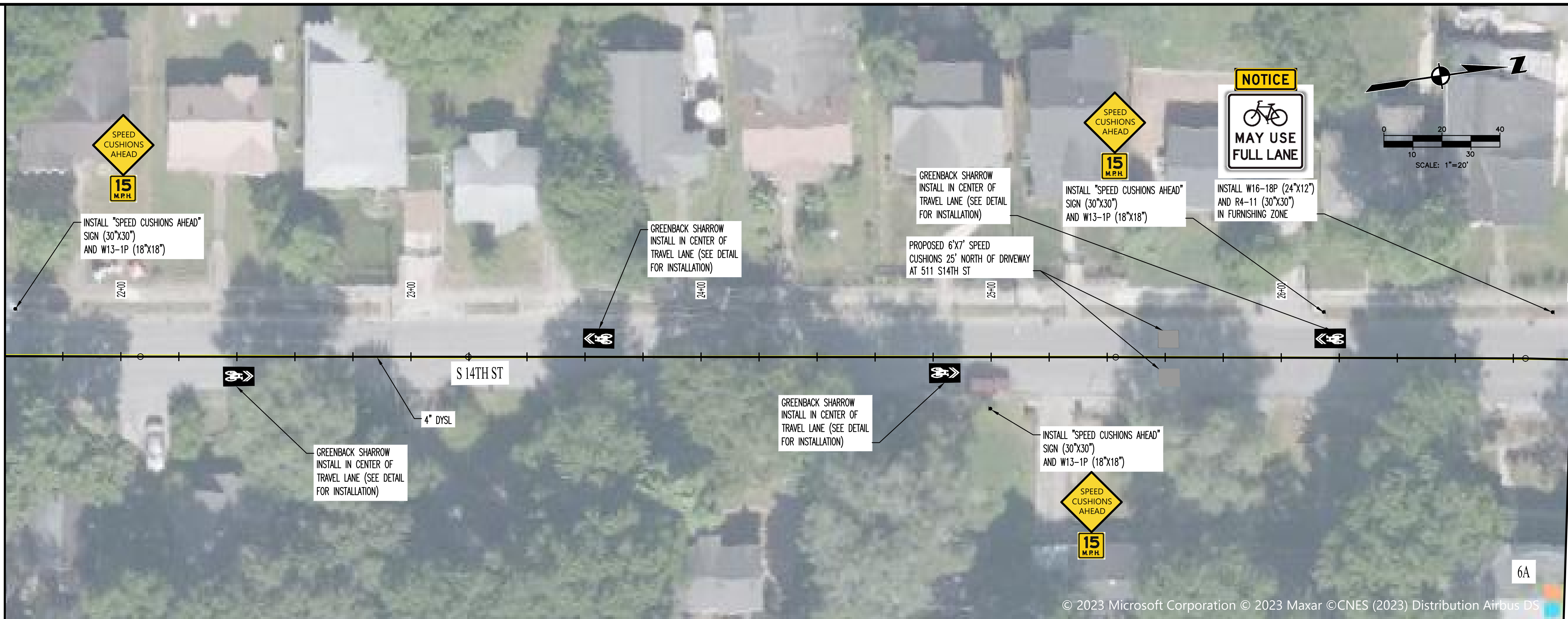
C:\S\HSET_P\01_B\1_006_2023-COA\DESIGN\SURVEY\DWG\SHEET FILES\MET008_5_14TH_ST_SHE.DWG, 8/5/2024 11:26 AM, JAMES PROKING

MATCHLINE STATION 21+60 (SEE 5B)

MATCHLINE STATION 27+00 (SEE 6A)

MATCHLINE STATION 27+00 (SEE 5B)

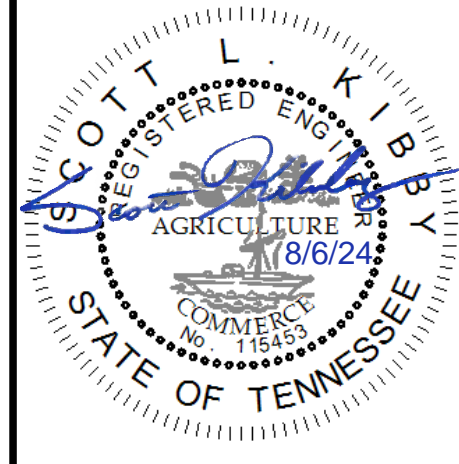
MATCHLINE STATION 32+40 (SEE 7A)



LDA ENGINEERING

REV	DATE	REVISION DESCRIPTION
1	04/23/24	ISSUE FOR PERMITS AND BIDDING
2		REVISIONS

METROPOLITAN GOVERNMENT OF NASHVILLE
AND DAVIDSON COUNTY, TENNESSEE
SOUTH 14TH STREET BIKEWAY IMPROVEMENTS
FROM DAVIDSON STREET TO WOODLAND STREET



PROJECT NUMBER: MET008
DATE: 9-2023 SCALE: 1"=20'
DRAWN BY: JEP DESIGNED BY: ZDB

SHEET TITLE:
PROPOSED LAYOUT

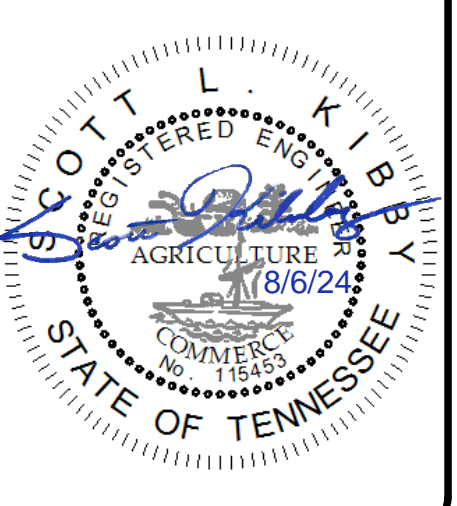
THIS DOCUMENT AND THE IDEAS AND DESIGNS INCORPORATED HEREIN, AS AN INSTRUMENT OF PROFESSIONAL SERVICE, IS THE PROPERTY OF LDA ENGINEERING AND IS NOT TO BE USED, IN WHOLE OR IN PART, FOR ANY OTHER PROJECT WITHOUT THE WRITTEN AUTHORIZATION OF LDA ENGINEERING.



LDA ENGINEERING

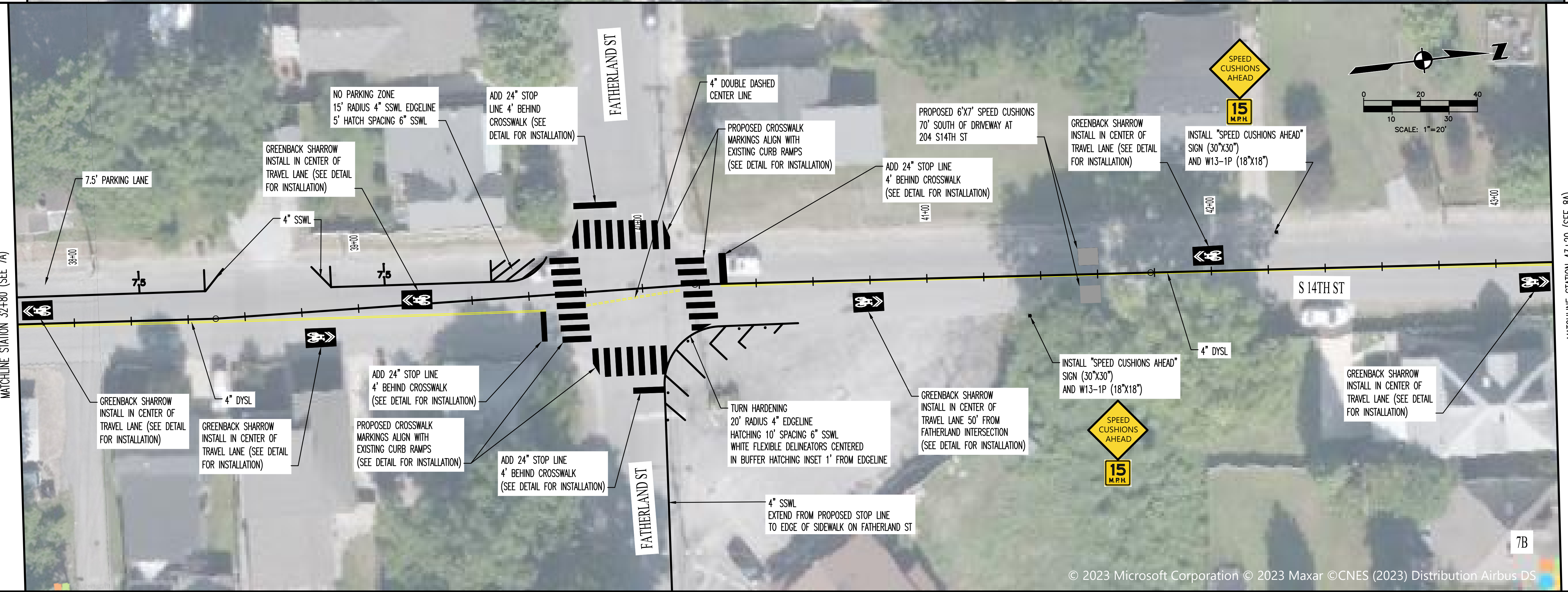
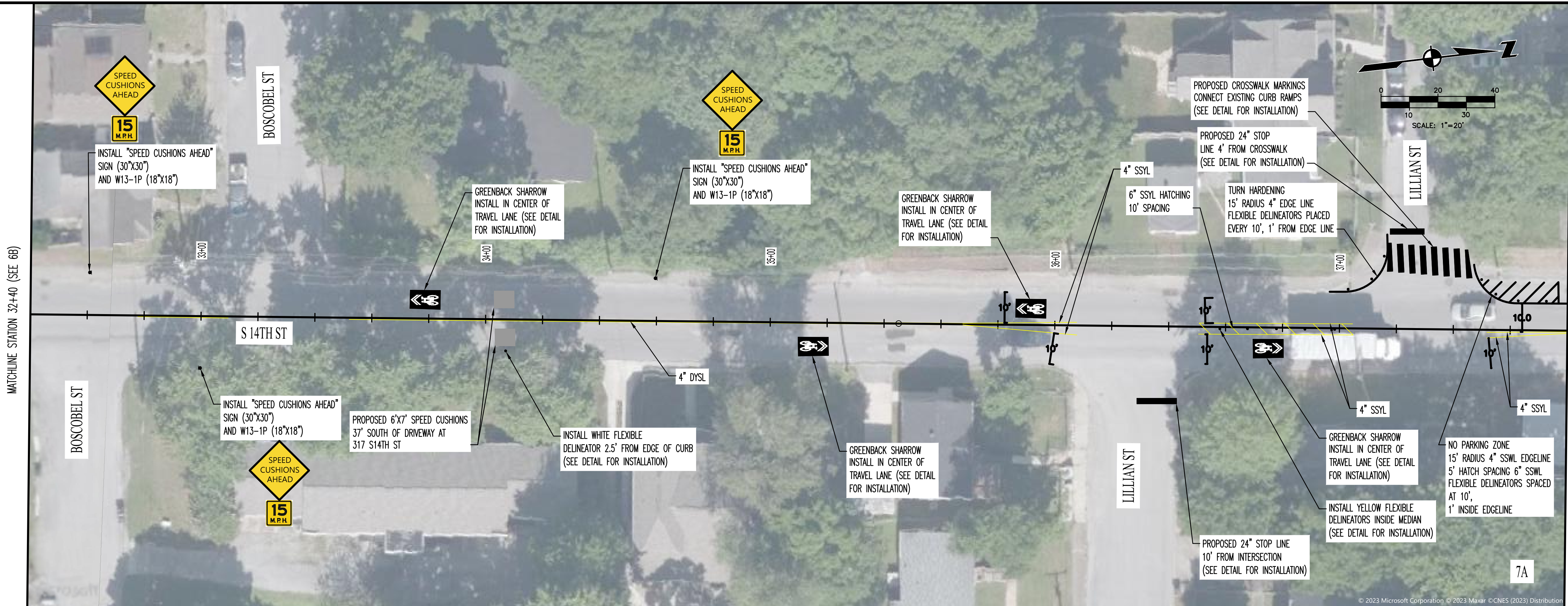
REV	DATE	REVISION DESCRIPTION
1	04/23/24	PARKING LANE AND BIKELANE IDENTIFICATION
2		REPLACE SPEED CUSHIONS WITH SPEED CUSHIONS WITH SPEED CUSHIONS

METROPOLITAN GOVERNMENT OF NASHVILLE
AND DAVIDSON COUNTY, TENNESSEE
SOUTH 14TH STREET BIKEWAY IMPROVEMENTS
FROM DAVIDSON STREET TO WOODLAND STREET



PROJECT NUMBER: MET008
DATE: 9-2023 SCALE: 1"=20'
DRAWN BY: JEP DESIGNED BY: ZDB

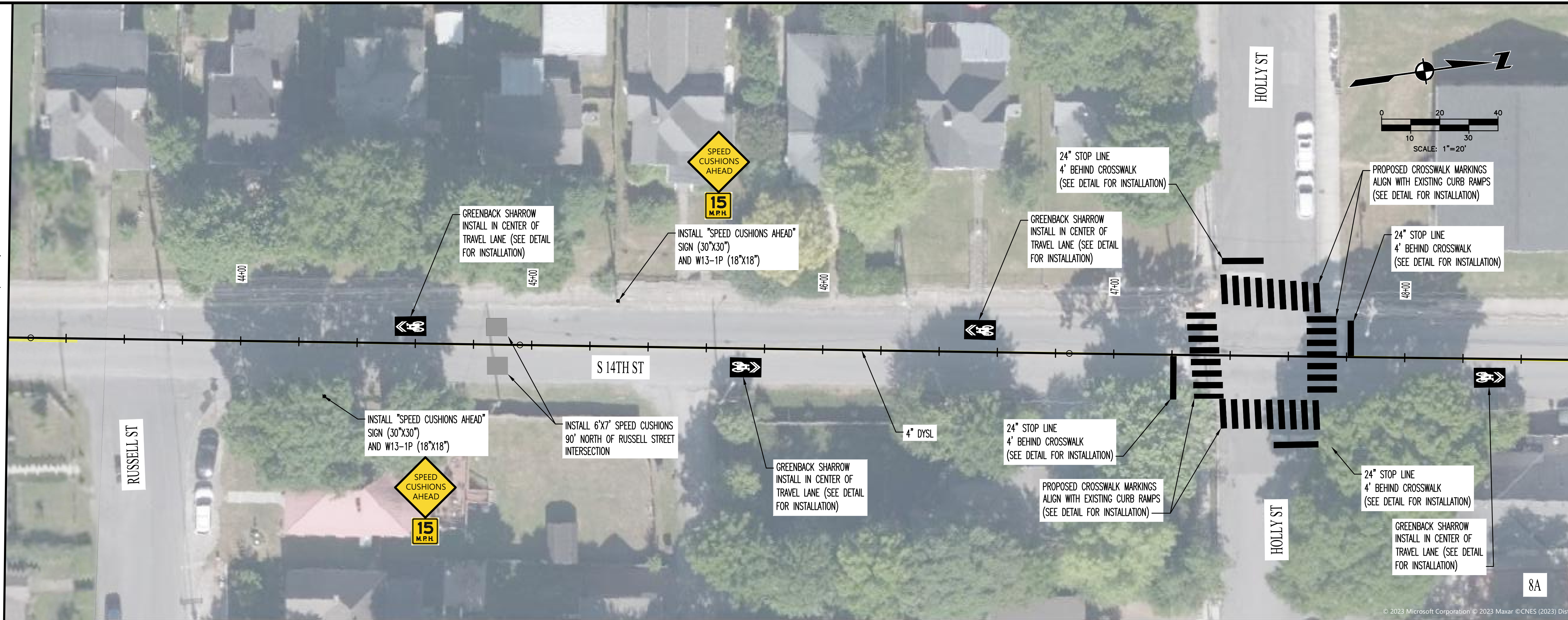
SHEET TITLE: PROPOSED LAYOUT



C:\SHEET_PLOT_BM_006_2023-COA\DESIGN\SHEET\DWG\SHEET FILES\MET002_S_14TH_ST_SHEET.DWG, 8/5/2024 11:26 AM, JAMES PROCKING

C:\SHEET_PHOTO_2025-COA\DESIGN\SURVEY\DWG\SHEET FILES\MET008_5_14TH_ST_SHEET.DWG, 8/5/2024 11:26 AM, JAMES PROCKING

MATCHLINE STATION 43+20 (SEE 7B)

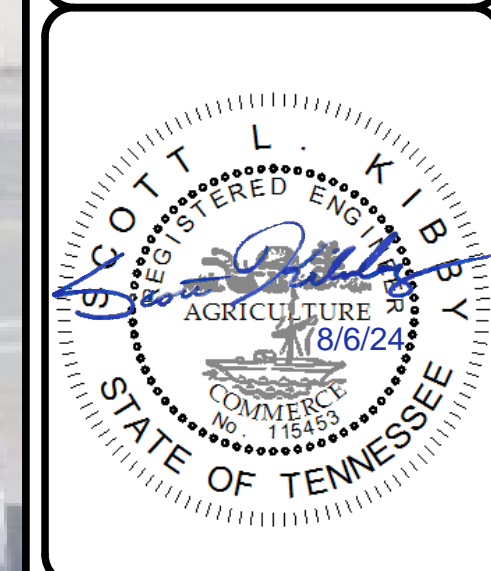


MATCHLINE STATION 48+60 (SEE 8B)



REV	DATE	REVISION DESCRIPTION
1	04/23/24	PROPOSED LANE AND BIKE LANE INDICATIONS
2	08/05/24	REPLACE SPEED CUSHIONS WITH SPEED CUSHIONS WITH SPEED

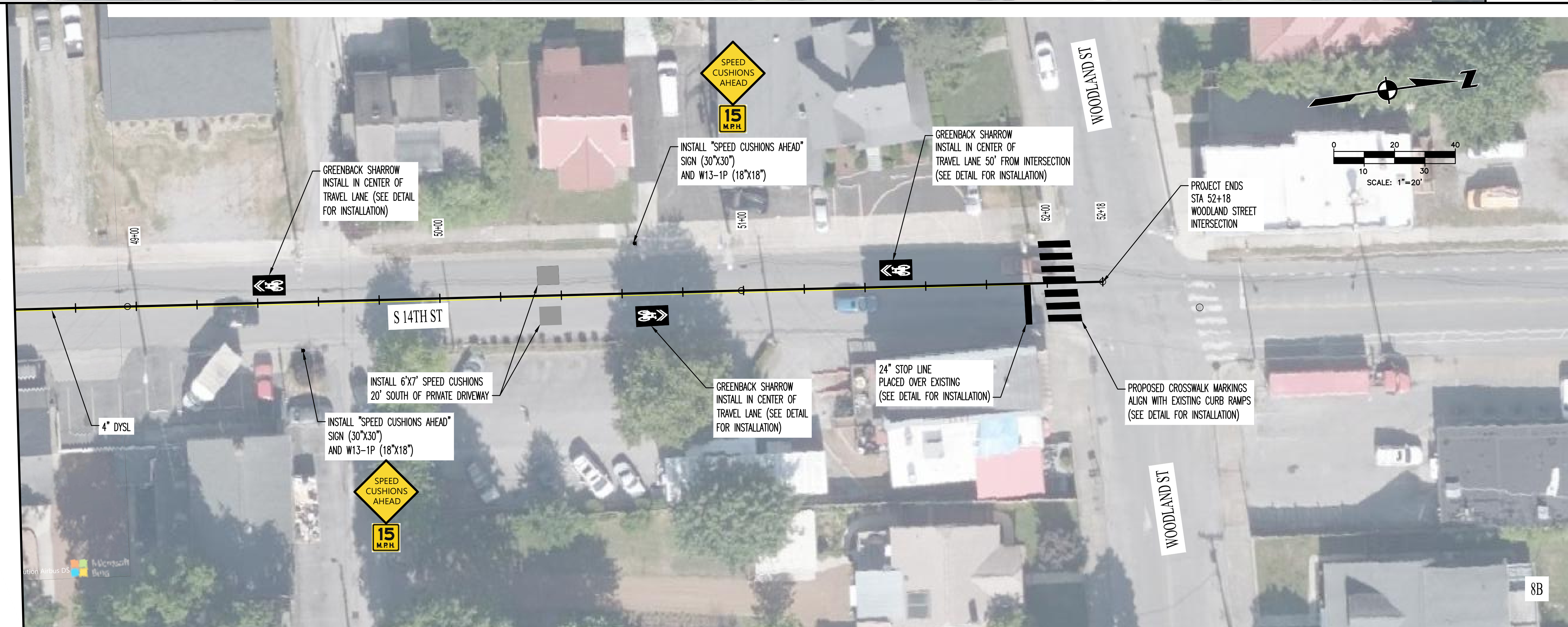
METROPOLITAN GOVERNMENT OF NASHVILLE
AND DAVIDSON COUNTY, TENNESSEE
SOUTH 14TH STREET BIKEWAY IMPROVEMENTS
FROM DAVIDSON STREET TO WOODLAND STREET



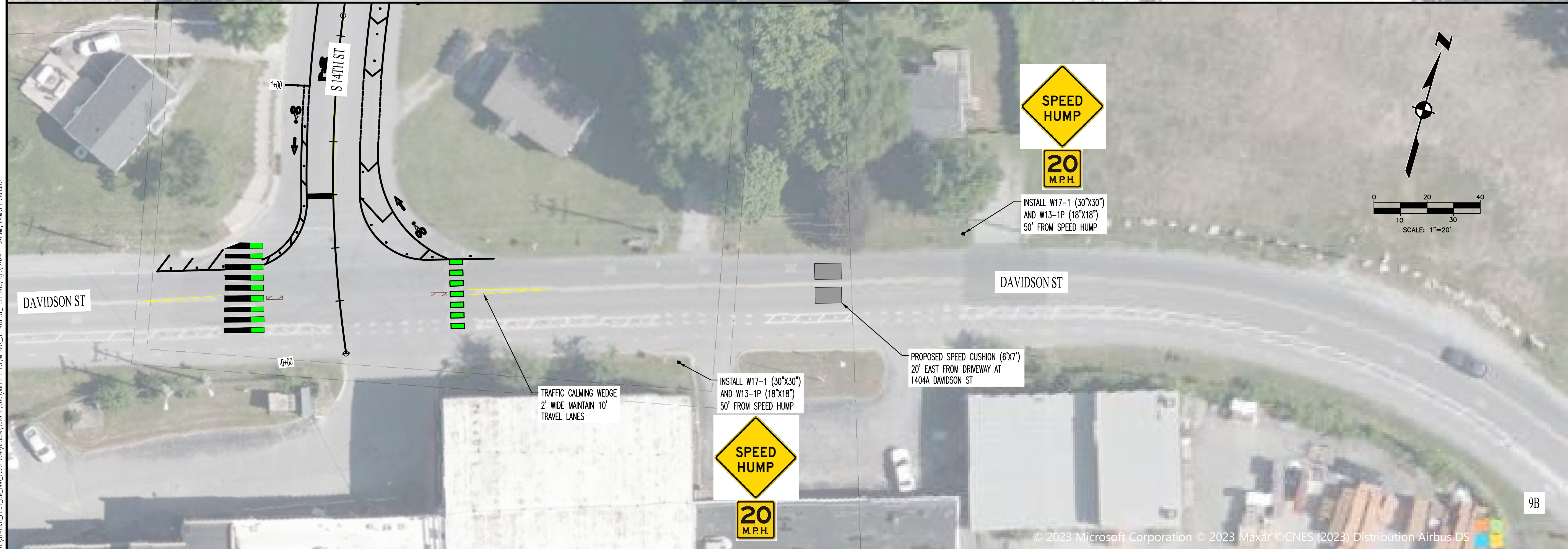
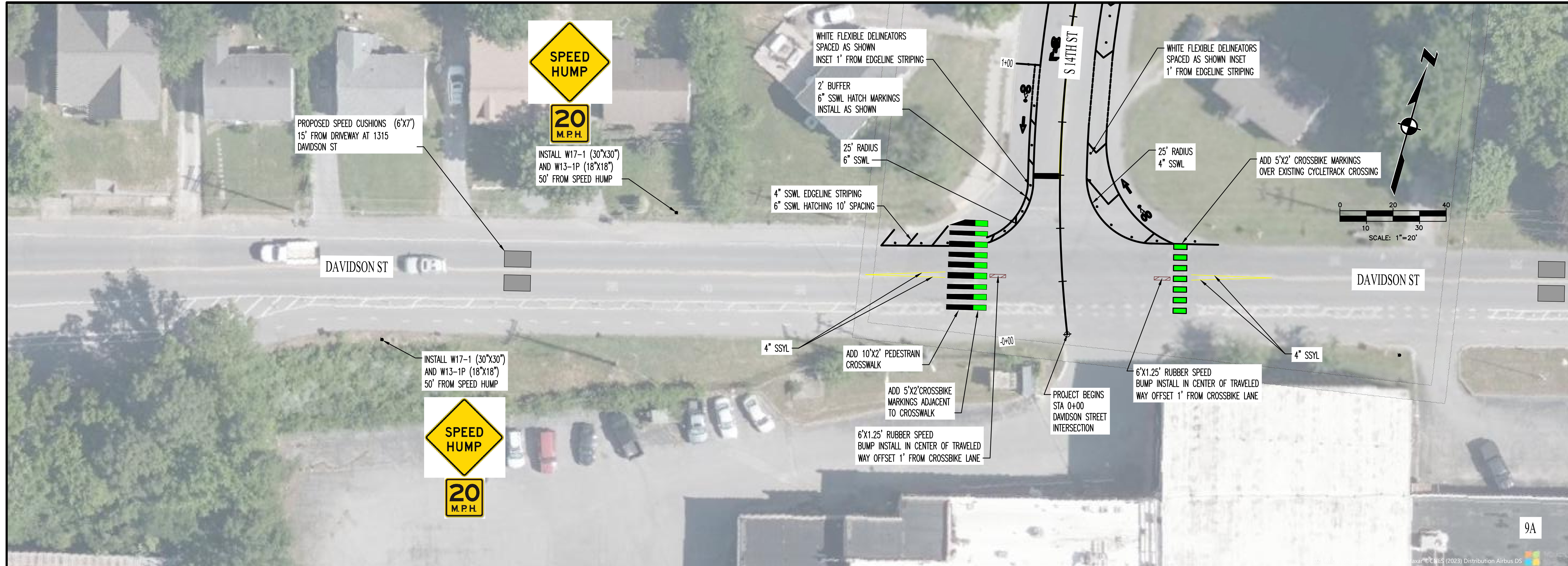
PROJECT NUMBER: MET008
DATE: 9-2023 SCALE: 1"=20'
DRAWN BY: JEP DESIGNED BY: ZDB

SHEET TITLE:
PROPOSED LAYOUT

MATCHLINE STATION 48+60 (SEE 8A)



8B

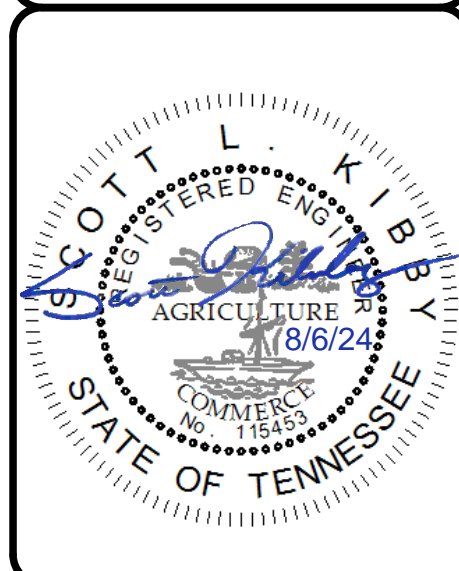


C:\SHEET_PHOTO_006_2023-COA\DESIGN\SHEET\DWG\SHEET FILES\WED02_5_14TH ST_SHEET.DWG, 8/29/2024 11:26 AM, JAMES PROCKING



REV	DATE	REVISION DESCRIPTION
1	04/23/24	PARALLEL AND BIKE LANE INDICATORS
2		REMOVE SPEED HUMP WITH SPEED CUSHION FROM 1404A DAVIDSON ST

METROPOLITAN GOVERNMENT OF NASHVILLE
AND DAVIDSON COUNTY, TENNESSEE
SOUTH 14TH STREET BIKEWAY IMPROVEMENTS
FROM DAVIDSON STREET TO WOODLAND STREET



PROJECT NUMBER: MET008	
DATE: 9-2023	SCALE: 1"=20'
DRAWN BY: JEP	DESIGNED BY: ZDB
SHEET TITLE: PROPOSED LAYOUT	
SHEET 9 OF 9	