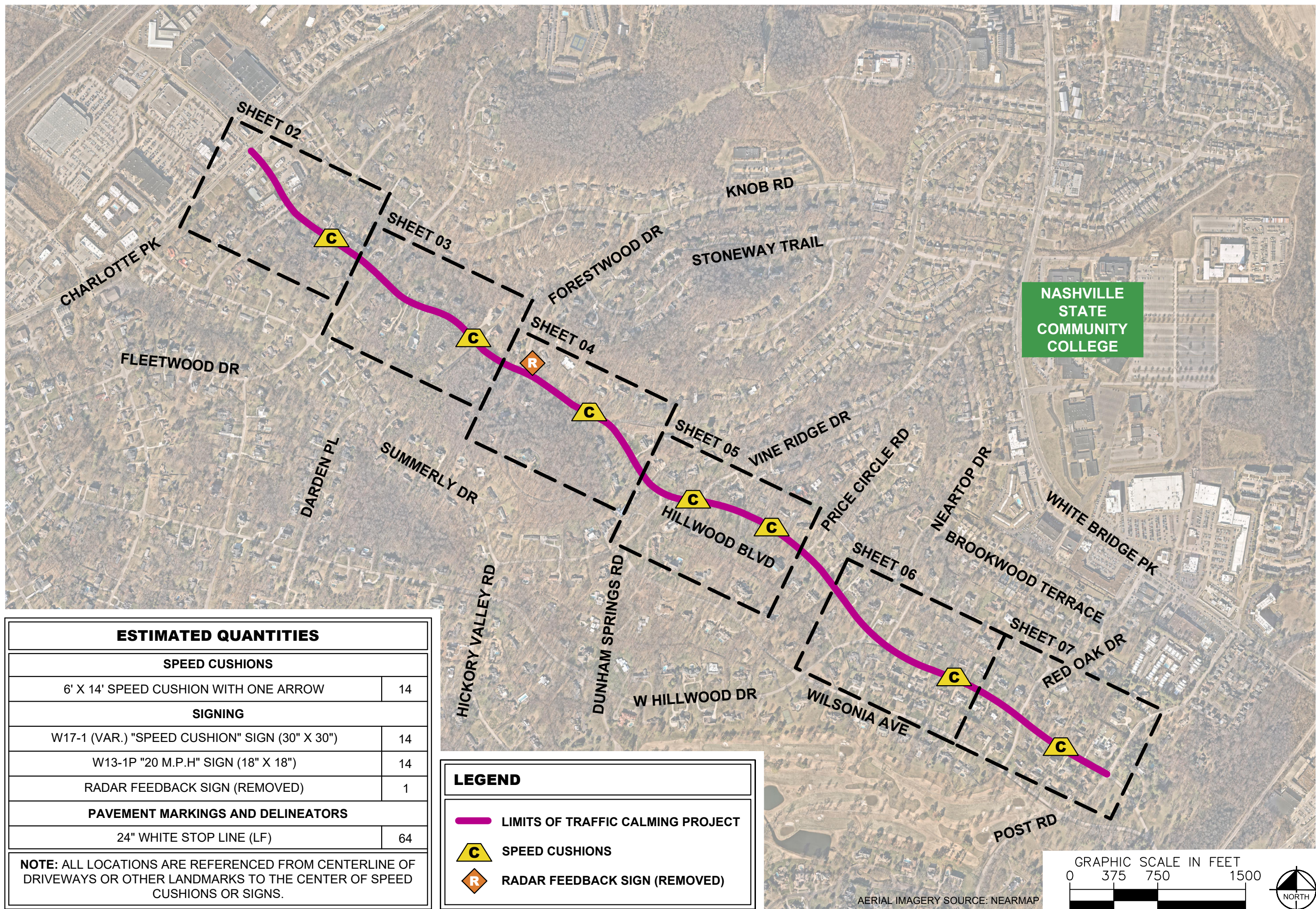


This document, together with the concepts and designs presented herein, is intended only for the specific purpose and client for which it was prepared. Reuse of and improper reliance on this document without written authorization and adaptation by Kimley-Horn and Associates, Inc. shall be without liability to Kimley-Horn and Associates, Inc.



ESTIMATED QUANTITIES

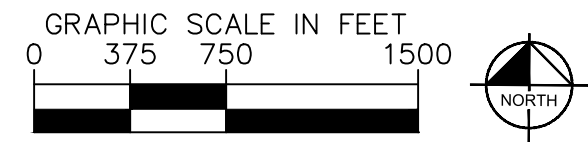
SPEED CUSHIONS	
6' X 14' SPEED CUSHION WITH ONE ARROW	14
SIGNING	
W17-1 (VAR.) "SPEED CUSHION" SIGN (30" X 30")	14
W13-1P "20 M.P.H." SIGN (18" X 18")	14
RADAR FEEDBACK SIGN (REMOVED)	1
PAVEMENT MARKINGS AND DELINEATORS	
24" WHITE STOP LINE (LF)	64

NOTE: ALL LOCATIONS ARE REFERENCED FROM CENTERLINE OF DRIVEWAYS OR OTHER LANDMARKS TO THE CENTER OF SPEED CUSHIONS OR SIGNS.

LEGEND

- █ LIMITS OF TRAFFIC CALMING PROJECT
- ▲ SPEED CUSHIONS
- ◆ RADAR FEEDBACK SIGN (REMOVED)

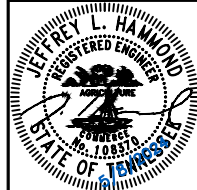
NASHVILLE STATE COMMUNITY COLLEGE



AERIAL IMAGERY SOURCE: NEARMAP



**HILLWOOD BLVD
TRAFFIC CALMING**
NASHVILLE, TN



DESIGNED BY: JLH
DRAWN BY: JTL
CHECKED BY: NDOT
DATE: 5/8/2024
KIMLEY-HORN PROJECT NO. 118900046

KEY
SHEET NUMBER
01

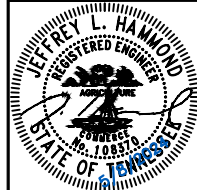
This document, together with the concepts and designs presented herein, is intended only for the specific purpose and client for which it was prepared. Reuse or improper reliance on this document without written authorization and adaptation by Kimley-Horn and Associates, Inc. shall be without liability to Kimley-Horn and Associates, Inc.



SPEED CUSHIONS



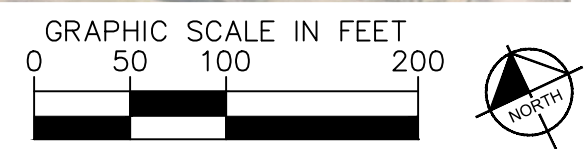
HILLWOOD BLVD
TRAFFIC CALMING
NASHVILLE, TN



DESIGNED BY: JLH
DRAWN BY: JTL
CHECKED BY: NDOT
DATE: 5/8/2024
KIMLEY-HORN PROJECT NO. 118900046

CONCEPT
SHEET NUMBER
02

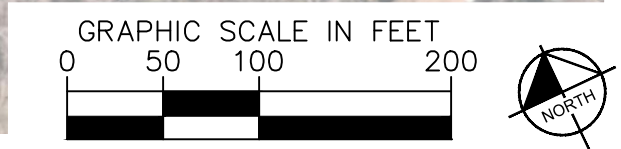
AERIAL IMAGERY SOURCE: NEARMAP



This document, together with the concepts and designs presented herein, is intended only for the specific purpose and client for which it was prepared. Reuse of and improper reliance on this document without written authorization and adaptation by Kimley-Horn and Associates, Inc. shall be without liability to Kimley-Horn and Associates, Inc.



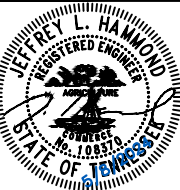
SPEED CUSHIONS



AERIAL IMAGERY SOURCE: NEARMAP



HILLWOOD BLVD
TRAFFIC CALMING
NASHVILLE, TN



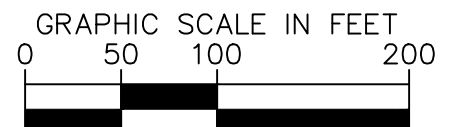
DESIGNED BY: JLH
DRAWN BY: JTL
CHECKED BY: NDOT
DATE: 5/8/2024
KIMLEY-HORN PROJECT NO. 118900046

CONCEPT
SHEET NUMBER
03

This document, together with the concepts and designs presented herein, is intended only for the specific purpose and client for which it was prepared. Reuse of and improper reliance on this document without written authorization and adaptation by Kimley-Horn and Associates, Inc. shall be without liability to Kimley-Horn and Associates, Inc.



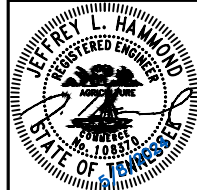
SPEED CUSHIONS



AERIAL IMAGERY SOURCE: NEARMAP



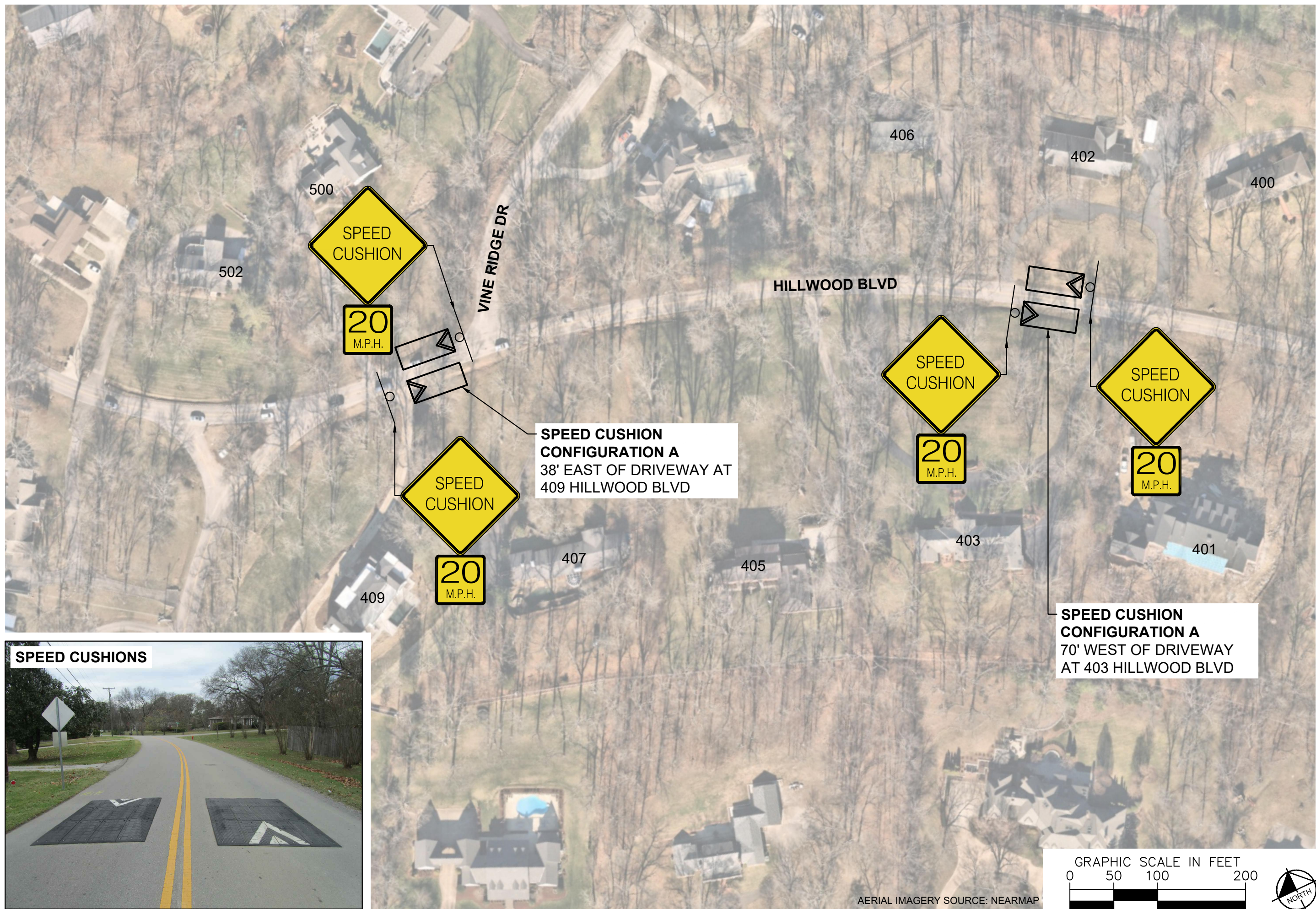
HILLWOOD BLVD
TRAFFIC CALMING
NASHVILLE, TN



DESIGNED BY:	JLH
DRAWN BY:	JTL
CHECKED BY:	NDOT
DATE:	5/8/2024
KIMLEY-HORN PROJECT NO.:	118900046

CONCEPT
SHEET NUMBER
04

This document, together with the concepts and designs presented herein, is intended only for the specific purpose and client for which it was prepared. Reuse and improper reliance on this document without written authorization and adaptation by Kimley-Horn and Associates, Inc. shall be without liability to Kimley-Horn and Associates, Inc.

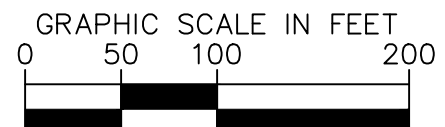


SPEED CUSHIONS



SPEED CUSHION CONFIGURATION A
38' EAST OF DRIVEWAY AT
409 HILLWOOD BLVD

SPEED CUSHION CONFIGURATION A
70' WEST OF DRIVEWAY
AT 403 HILLWOOD BLVD



AERIAL IMAGERY SOURCE: NEARMAP



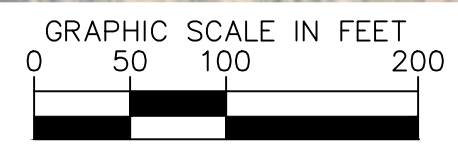
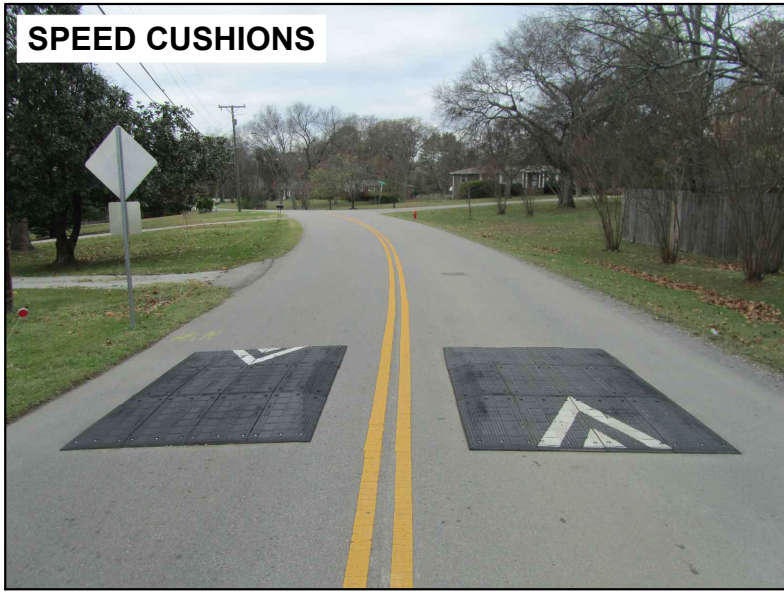
**HILLWOOD BLVD
TRAFFIC CALMING**
NASHVILLE, TN



DESIGNED BY:	JLH
DRAWN BY:	JTL
CHECKED BY:	NDOT
DATE:	5/8/2024
KIMLEY-HORN PROJECT NO.:	118900046

CONCEPT
SHEET NUMBER
05

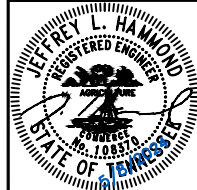
SPEED CUSHIONS



AERIAL IMAGERY SOURCE: NEARMAP



**HILLWOOD BLVD
TRAFFIC CALMING**
NASHVILLE, TN



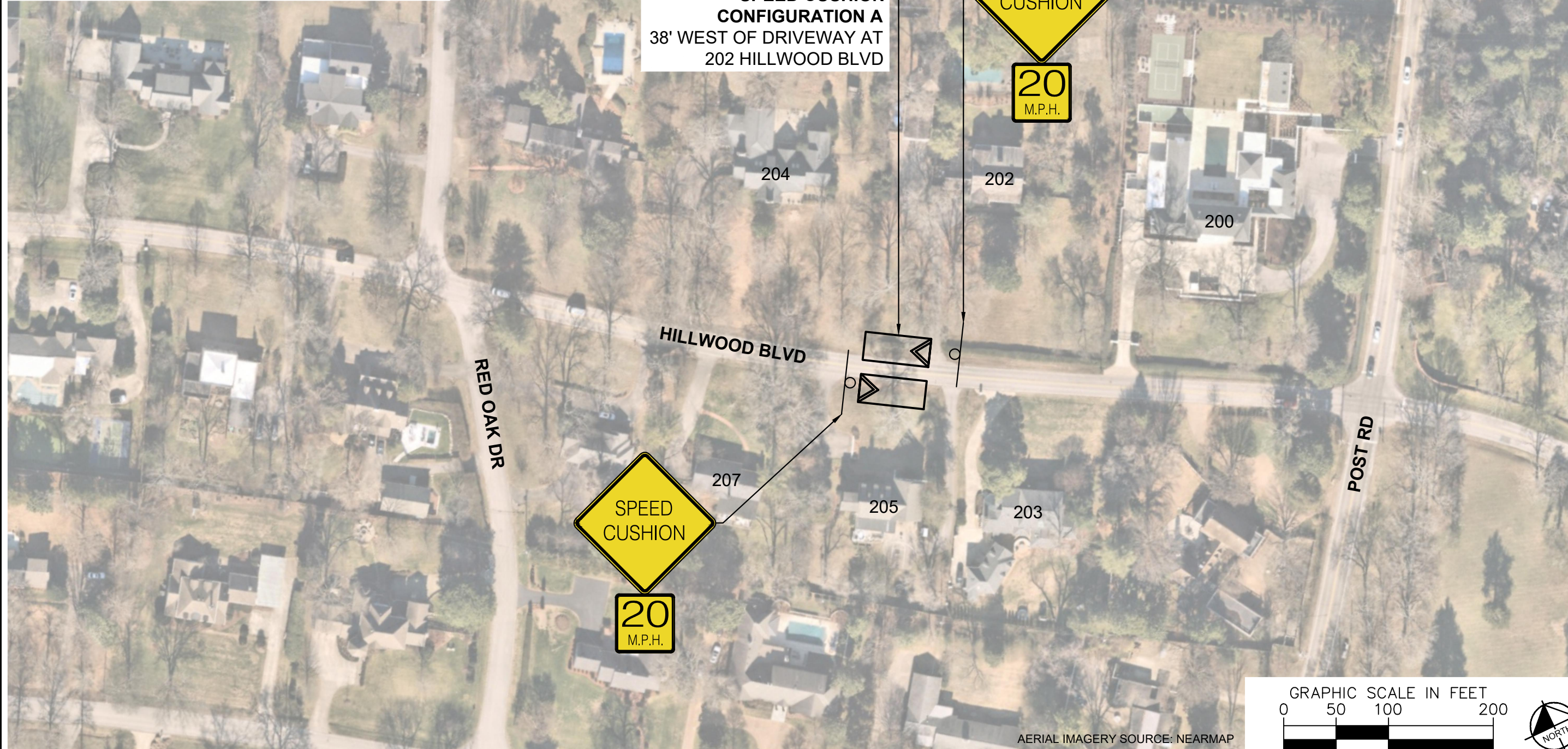
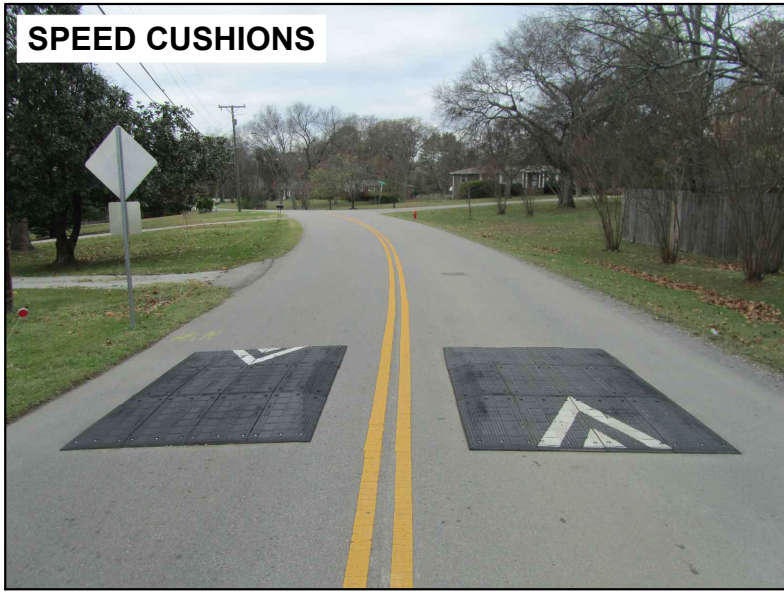
DESIGNED BY:	JLH
DRAWN BY:	JTL
CHECKED BY:	NDOT
DATE:	5/8/2024
KIMLEY-HORN PROJECT NO. 118900046	

CONCEPT

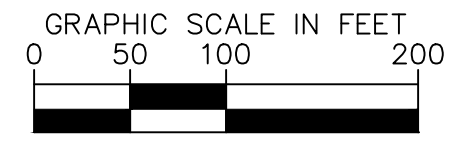
SHEET NUMBER
06

This document, together with the concepts and designs presented herein, is intended only for the specific purpose and client for which it was prepared. Reuse of and improper reliance on this document without written authorization and adaptation by Kimley-Horn and Associates, Inc. shall be without liability to Kimley-Horn and Associates, Inc.

SPEED CUSHIONS



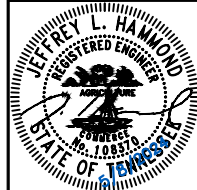
SPEED CUSHION CONFIGURATION A
38' WEST OF DRIVEWAY AT
202 HILLWOOD BLVD



AERIAL IMAGERY SOURCE: NEARMAP



HILLWOOD BLVD
TRAFFIC CALMING
NASHVILLE, TN



DESIGNED BY:	JLH
DRAWN BY:	JTL
CHECKED BY:	NDOT
DATE:	5/9/2024
KIMLEY-HORN PROJECT NO.:	118900046

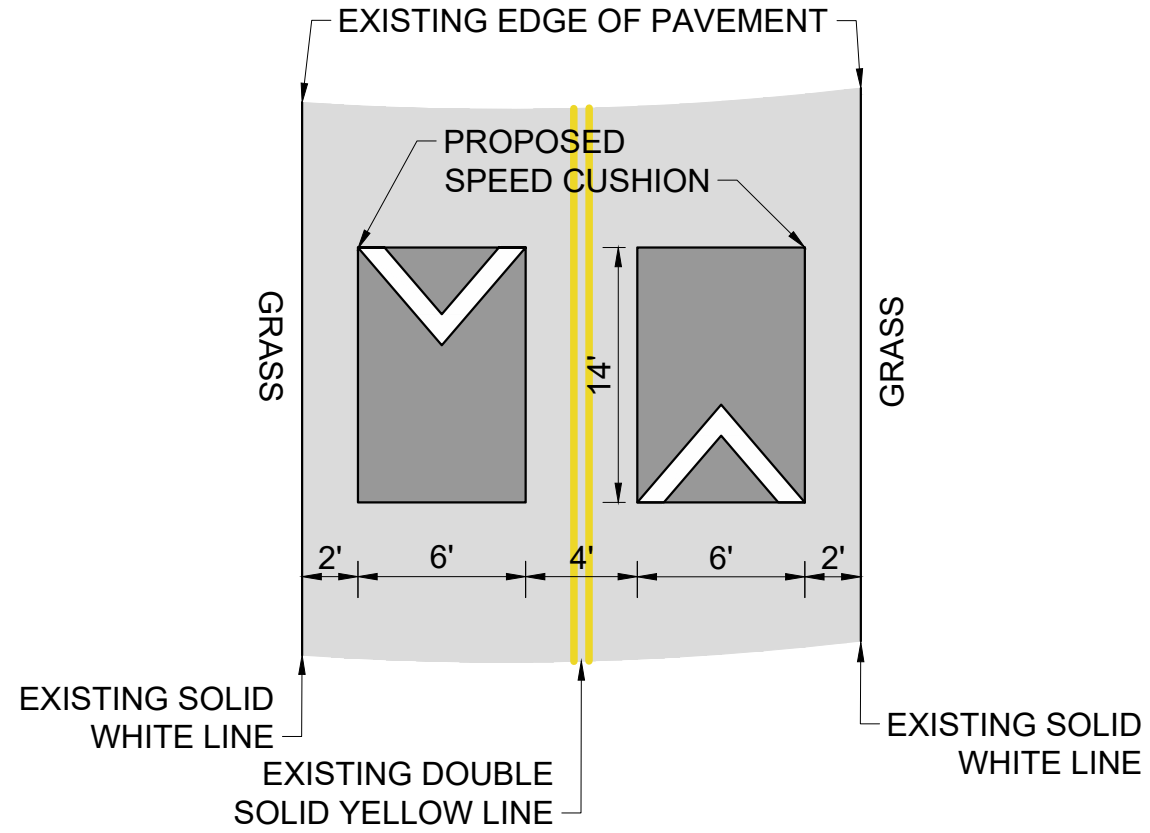
CONCEPT
SHEET NUMBER
07

This document, together with the concepts and designs presented herein, is intended only for the specific purpose and client for which it was prepared. Reuse of and improper reliance on this document without written authorization and adaptation by Kimley-Horn and Associates, Inc. shall be without liability to Kimley-Horn and Associates, Inc.

This document, together with the concepts and designs presented herein, as an instrument of service, is intended only for the specific purpose and client for which it was prepared. Reuse of and improper reliance on this document without written authorization and adaptation by Kimley-Horn and Associates, Inc. shall be without liability to Kimley-Horn and Associates, Inc.

CONFIGURATION A

20' OF PAVEMENT



HILLWOOD BLVD
TRAFFIC CALMING
NASHVILLE, TN



DESIGNED BY:	JLH
DRAWN BY:	JTL
CHECKED BY:	NDOT
DATE:	5/8/2024
KIMLEY-HORN PROJECT NO.:	118800046

DETAIL

SHEET NUMBER
08