

ESTIMATED QUANTITIES

SPEED CUSHIONS

6' X 10.5' SPEED CUSHION WITH ONE ARROW	16
6' X 10.5' SPEED CUSHION WITH DSYL	8

SIGNING





W17-1 (VAR.) "SPEED CUSHION" SIGN (30" X 30")	4
W17-1 (VAR.) "SPEED CUSHIONS AHEAD" SIGN (30" X 30")	6
W13-1P "20 M.P.H" SIGN (18" X 18")	10
RADAR FEEDBACK SIGN	2

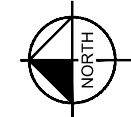
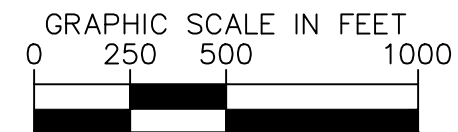
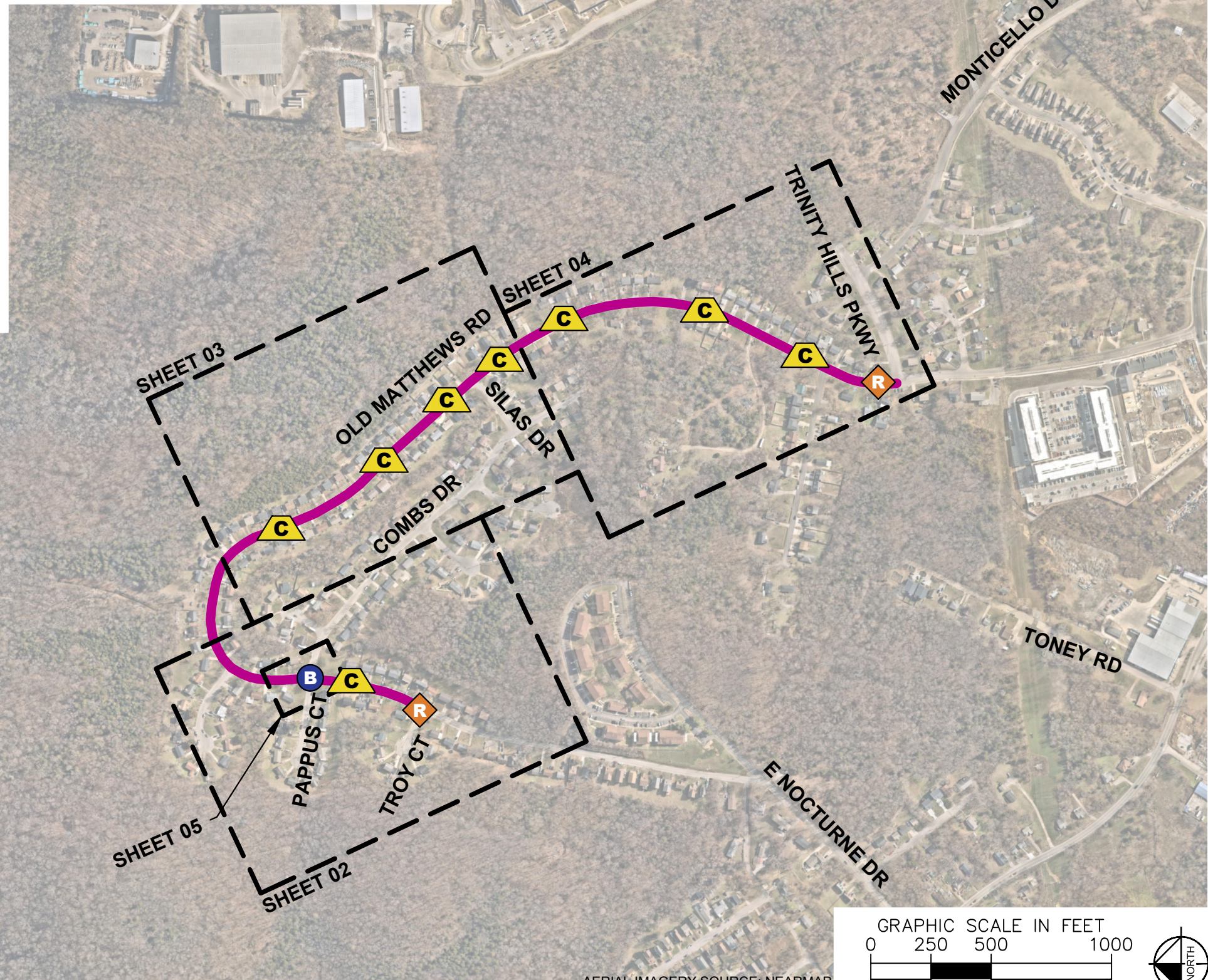
PAVEMENT MARKINGS AND DELINEATORS

4" WHITE FLEXIBLE DELINEATOR	73
4" DOUBLE SOLID WHITE LINE (LF)	420
6" SOLID WHITE LINE (LF)	400
24" WHITE STOP BAR (LF)	20

NOTE: ALL LOCATIONS ARE REFERENCED FROM CENTERLINE OF DRIVEWAYS OR OTHER LANDMARKS TO THE CENTER OF SPEED CUSHIONS OR SIGNS.

LEGEND

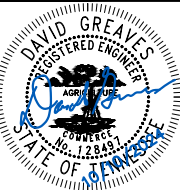
-  LIMITS OF TRAFFIC CALMING PROJECT
-  SPEED CUSHIONS
-  RADAR FEEDBACK SIGN
-  BULB-OUTS



AERIAL IMAGERY SOURCE: NEARMAP



OLD MATTHEWS ROAD
TRAFFIC CALMING
NASHVILLE, TN

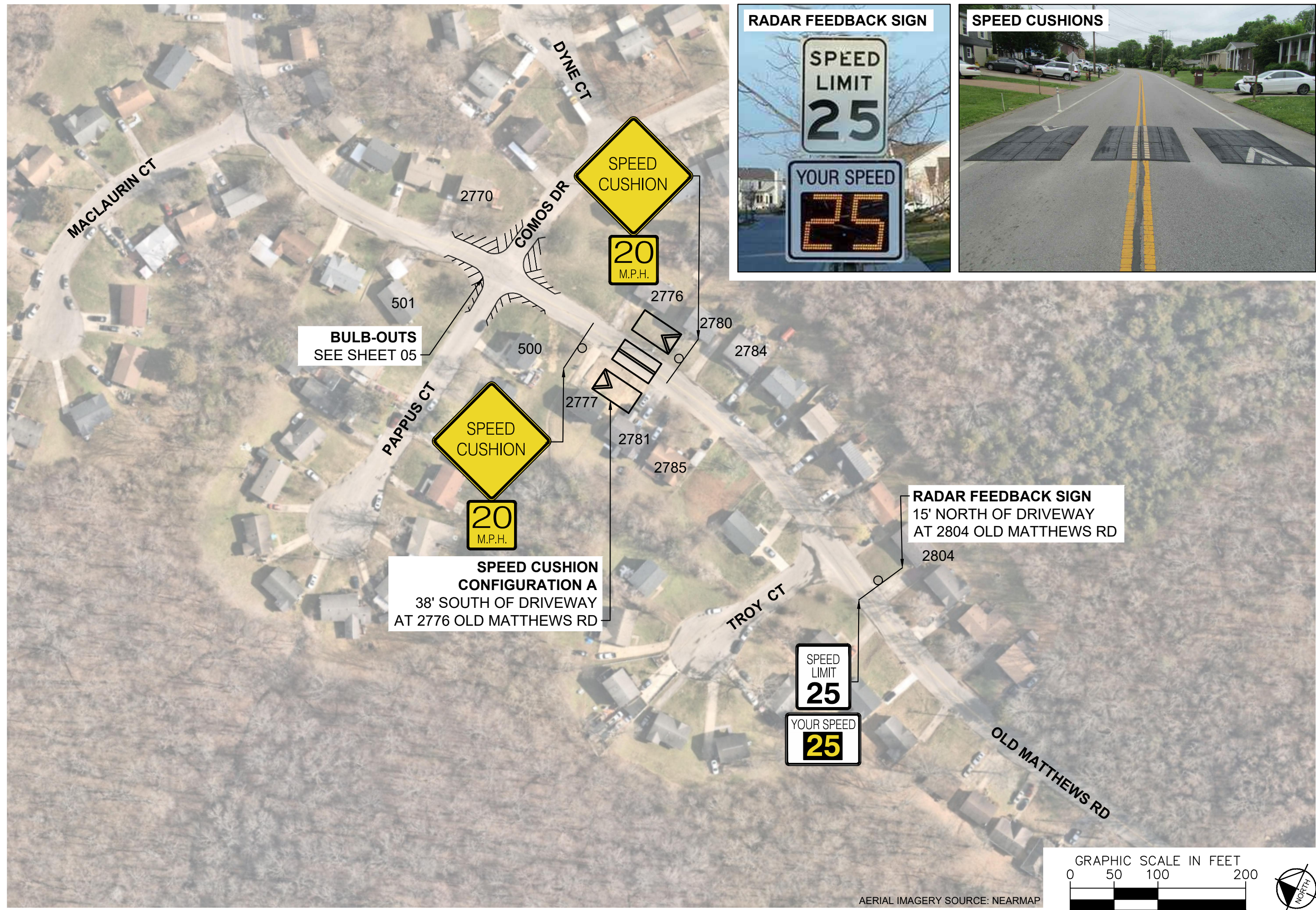


DESIGNED BY:	DJG
DRAWN BY:	JCB
CHECKED BY:	NDOT
DATE:	10/10/2024
KIMLEY-HORN PROJECT NO. 118900046	

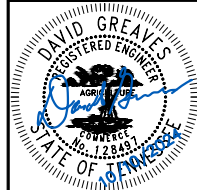
KEY
SHEET NUMBER
01

This document, together with the concepts and designs presented herein, is intended only for the specific purpose and client for which it was prepared. Reuse of and improper reliance on this document without written authorization and adaptation by Kimley-Horn and Associates, Inc. shall be without liability to Kimley-Horn and Associates, Inc.

This document, together with the concepts and designs presented herein, is intended only for the specific purpose and client for which it was prepared. Reuse of and improper reliance on this document without written authorization and adaptation by Kimley-Horn and Associates, Inc. shall be without liability to Kimley-Horn and Associates, Inc.



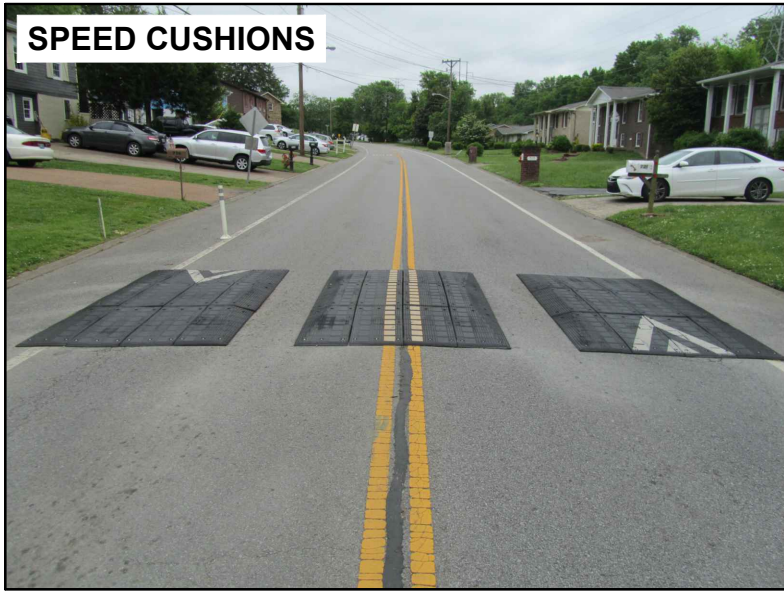
OLD MATTHEWS ROAD
TRAFFIC CALMING
NASHVILLE, TN



DESIGNED BY:	DJG
DRAWN BY:	JCB
CHECKED BY:	NDOT
DATE:	10/10/2024
KIMLEY-HORN PROJECT NO.:	118900046

CONCEPT
SHEET NUMBER
02

SPEED CUSHIONS

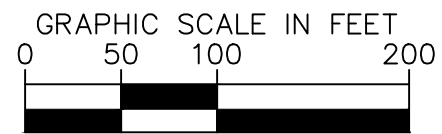


SPEED CUSHION CONFIGURATION A
24' SOUTH OF NORTHERN DRIVEWAY AT 2687 OLD MATTHEWS RD

SPEED CUSHION CONFIGURATION A
20' SOUTH OF DRIVEWAY AT 2713 OLD MATTHEWS RD

SPEED CUSHION CONFIGURATION B
28' SOUTH OF DRIVEWAY AT 2655 OLD MATTHEWS RD

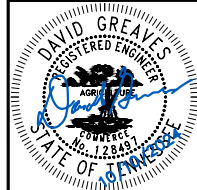
SPEED CUSHION CONFIGURATION A
28' SOUTH OF DRIVEWAY AT 2654 OLD MATTHEWS RD



AERIAL IMAGERY SOURCE: NEARMAP



OLD MATTHEWS ROAD
TRAFFIC CALMING
NASHVILLE, TN



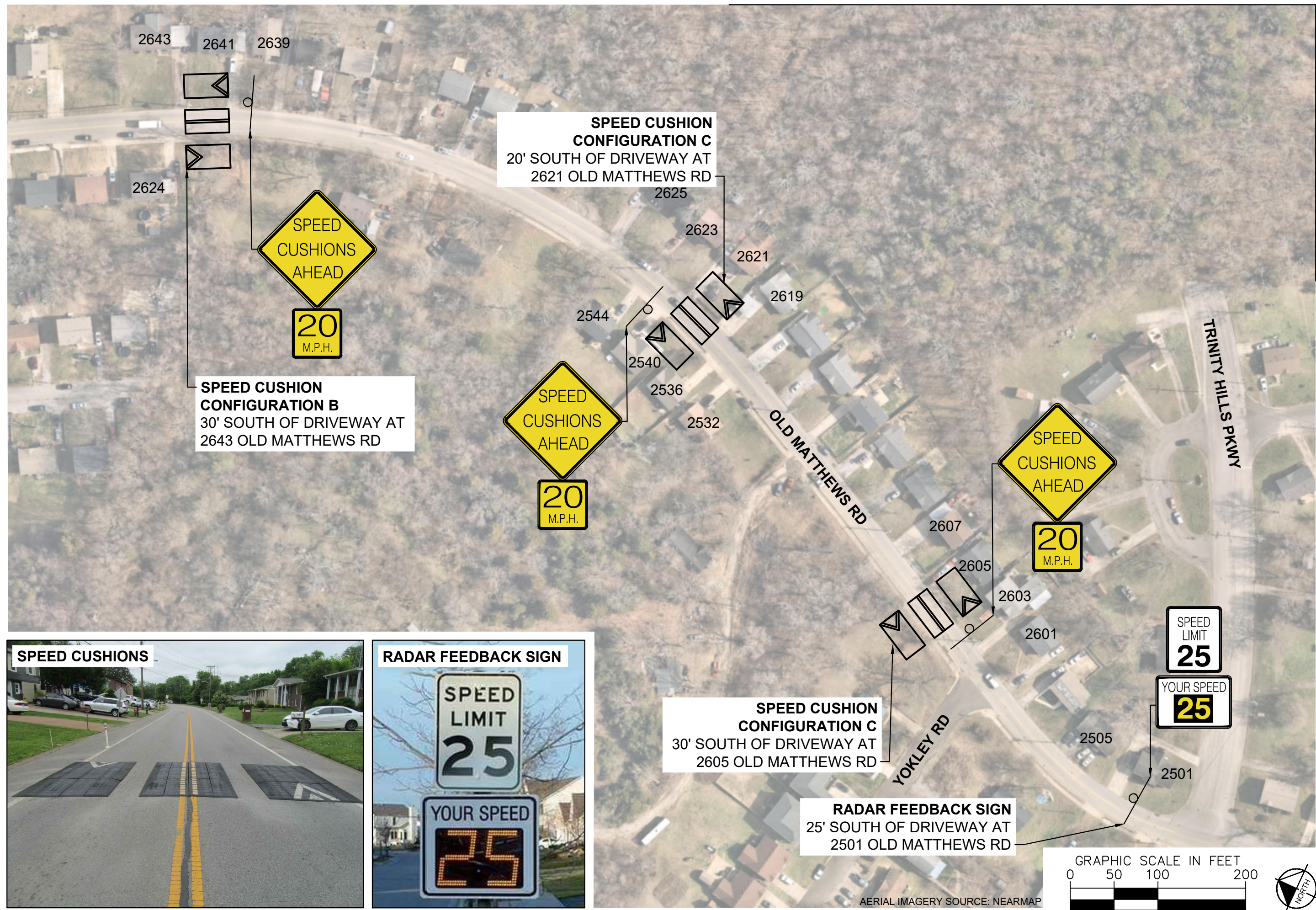
Kimley»Horn

DESIGNED BY:	DJG
DRAWN BY:	JCB
CHECKED BY:	NDOT
DATE:	10/10/2024
KIMLEY-HORN PROJECT NO.:	118900046

CONCEPT
SHEET NUMBER
03

This document, together with the concepts and designs presented herein, is intended only for the specific purpose and client for which it was prepared. Reuse of and improper reliance on this document without written authorization and adaptation by Kimley-Horn and Associates, Inc. shall be without liability to Kimley-Horn and Associates, Inc.

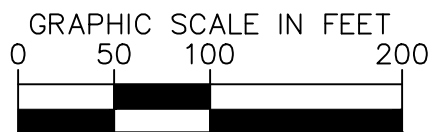
This document, together with the concepts and designs presented herein, is intended only for the specific purpose and client for which it was prepared. Reuse of and improper reliance on this document without written authorization and adaptation by Kimley-Horn and Associates, Inc. shall be without liability to Kimley-Horn and Associates, Inc.



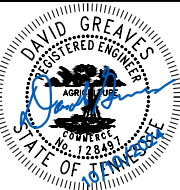
SPEED CUSHIONS



RADAR FEEDBACK SIGN

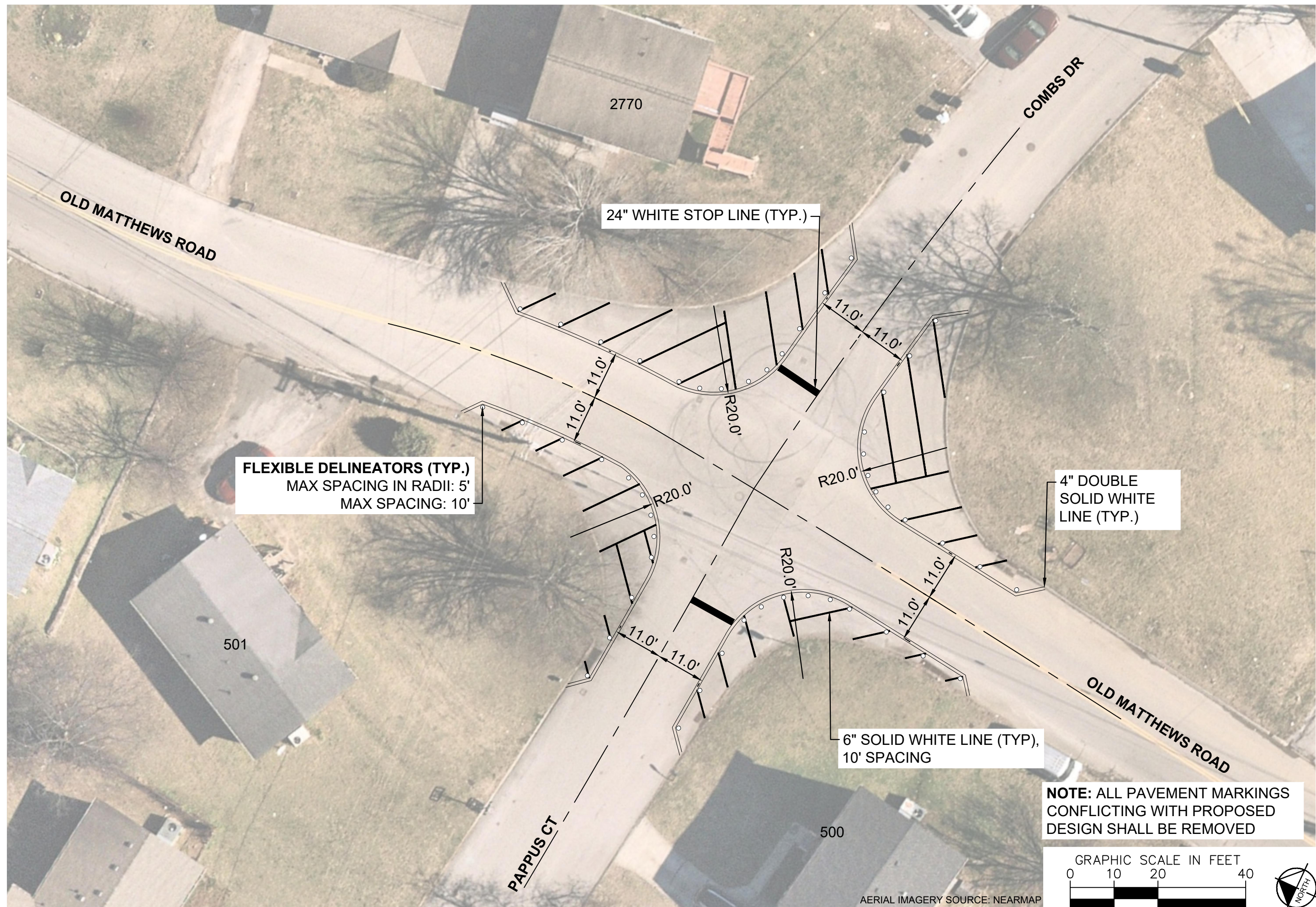


AERIAL IMAGERY SOURCE: NEARMAP

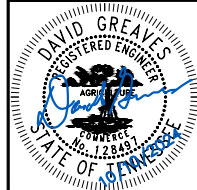


DESIGNED BY:	DJG
DRAWN BY:	JCB
CHECKED BY:	NDOT
DATE:	10/10/2024
KIMLEY-HORN PROJECT NO.:	118900046

This document, together with the concepts and designs presented herein, is intended only for the specific purpose and client for which it was prepared. Reuse of and improper reliance on this document without written authorization and adaptation by Kimley-Horn and Associates, Inc. shall be without liability to Kimley-Horn and Associates, Inc.



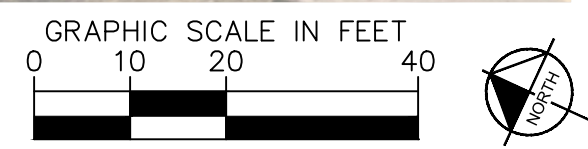
OLD MATTHEWS ROAD
TRAFFIC CALMING
NASHVILLE, TN



DESIGNED BY:	DJG
DRAWN BY:	JCB
CHECKED BY:	NDOT
DATE:	10/10/2024
KIMLEY-HORN PROJECT NO. 118900046	

CONCEPT
SHEET NUMBER
05

**NOTE: ALL PAVEMENT MARKINGS
CONFLICTING WITH PROPOSED
DESIGN SHALL BE REMOVED**

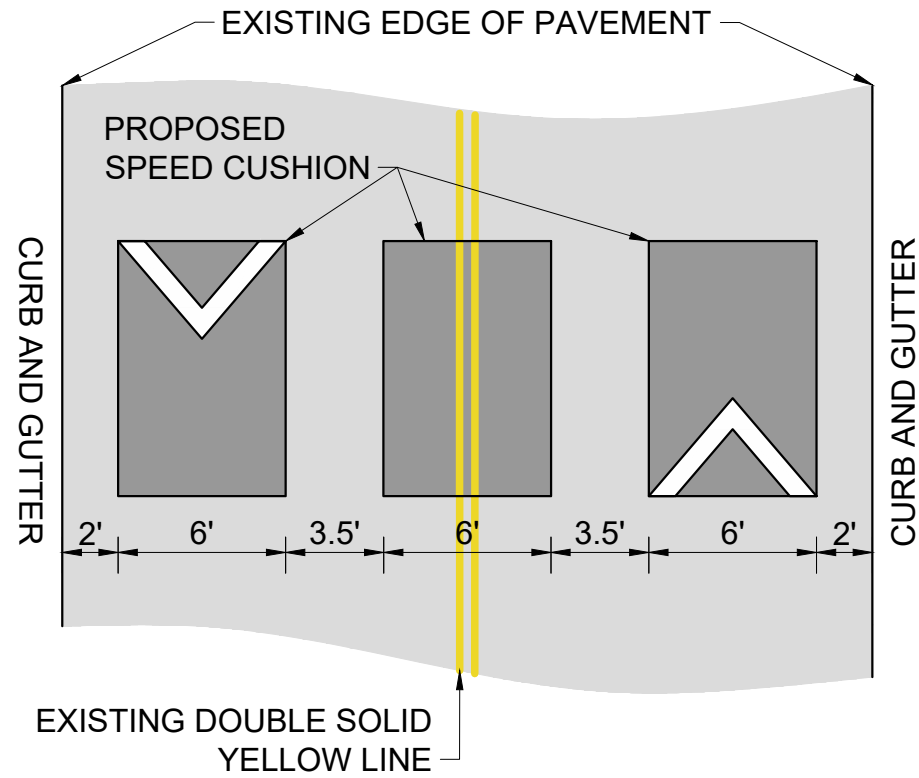


AERIAL IMAGERY SOURCE: NEARMAP

This document, together with the concepts and designs presented herein, as an instrument of service, is intended only for the specific purpose and client for which it was prepared. Reuse of and improper reliance on this document without written authorization and adaptation by Kimley-Horn and Associates, Inc. shall be without liability to Kimley-Horn and Associates, Inc.

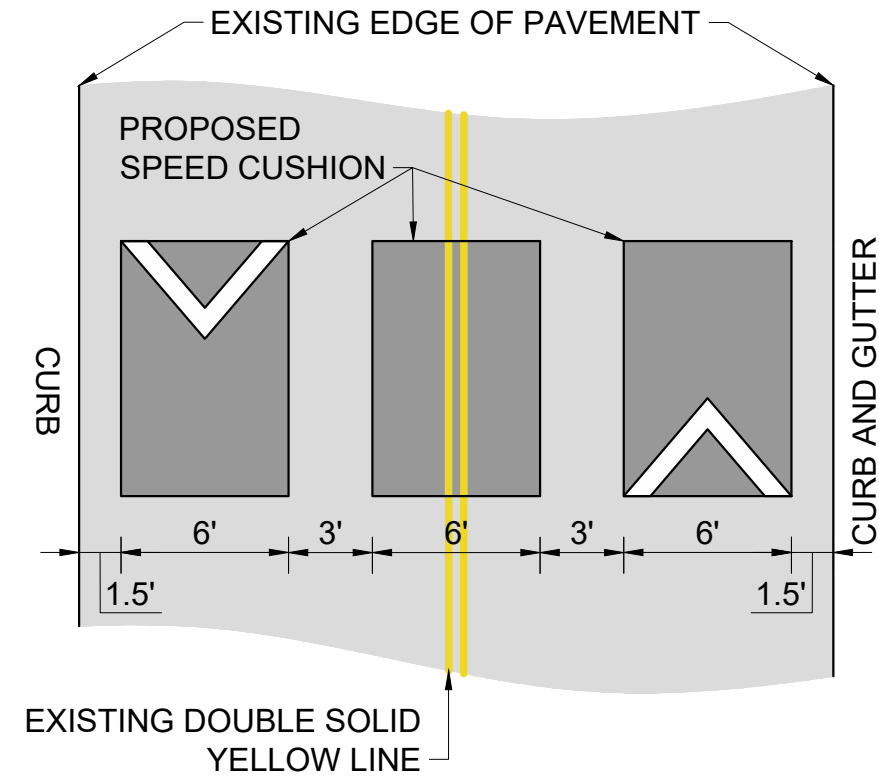
CONFIGURATION A

29' OF PAVEMENT



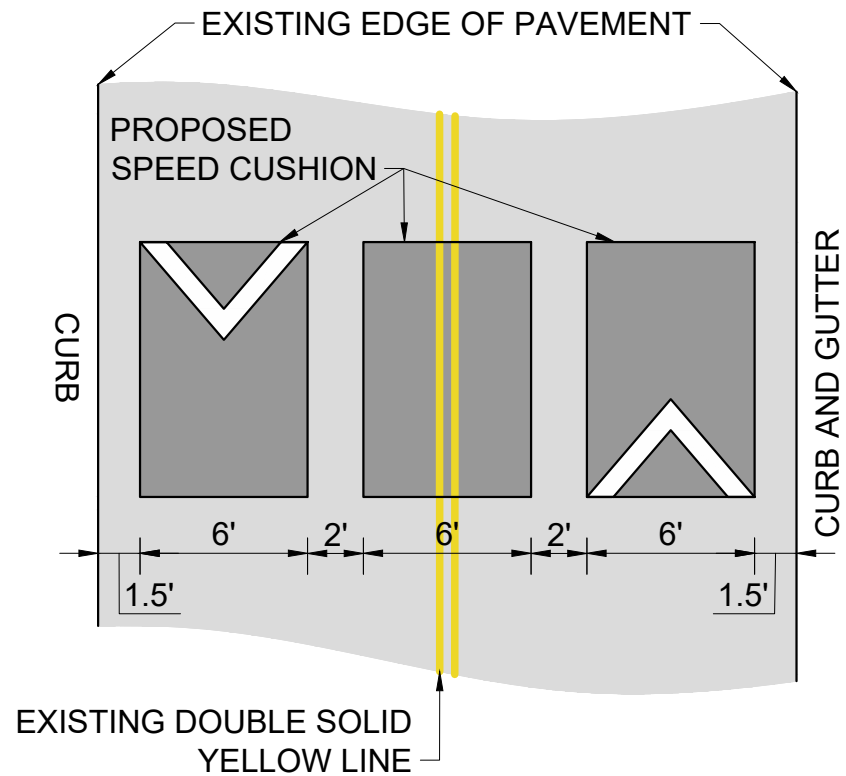
CONFIGURATION B

27' OF PAVEMENT

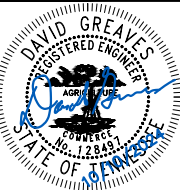


CONFIGURATION C

25' OF PAVEMENT



OLD MATTHEWS ROAD
TRAFFIC CALMING
NASHVILLE, TN



DESIGNED BY:	DJG
DRAWN BY:	JCB
CHECKED BY:	NDOT
DATE:	10/10/2024
KIMLEY-HORN PROJECT NO.:	118800046

DETAIL

SHEET NUMBER
06