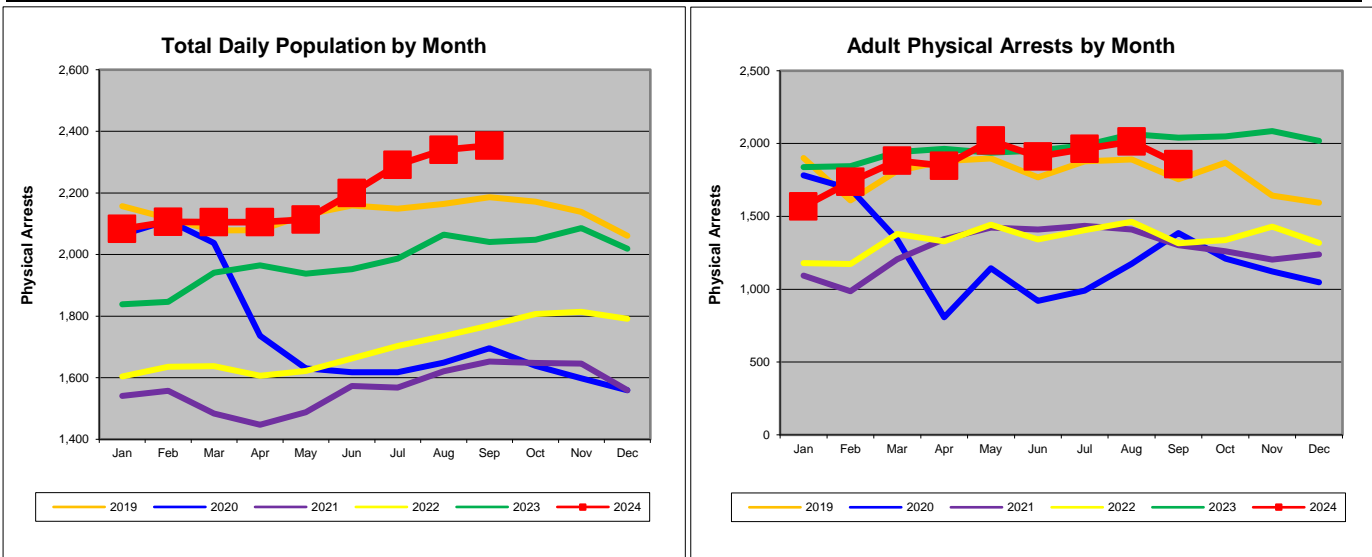


AVERAGE DAILY POPULATION REPORT

Davidson County Correctional Facilities

Overview of September 2024

1. The ADP in September 2024 was 2,354 which was 0.6% higher than the previous month. The ADP was 15.3% higher than in September 2023, when the population was 2,041.
2. The ADP for Pretrial Felons was 1,195 which was 2.5% higher than the previous month, and was 23.4% higher than the ADP of 969 in September 2023.
3. The ADP for Pretrial Misdemeanants was 168, which was 2.6% higher than the previous month, and was 25.2% higher than the ADP of 134 in September 2023.
4. In September 2024 the ADP for Convicted Misdemeanants & DUIs (CM+DUI) was 138. That was 15.5% lower than the previous month, and was 2.1% lower than the ADP of 141 in September 2023.
5. The average daily male population increased to 2,097 (+1.3%) in September 2024, while the female daily population was 257, a 5.0% decrease below the previous month.
6. The ADP for Locally Sentenced Felons (LSF) was 447 in September 2024. That was 5.6% higher than the previous month, and was 7.2% higher than September 2023 when it was 417.
7. State Sentenced Felons (TDOC) had an ADP of 174 in September 2024. That was 3.8% lower than the previous month, but was 30.2% higher than September 2023 when the ADP was 134.
8. LSF inmates were 19.0% of the ADP, while Pretrial Felons (PTF) made up 50.8% of the ADP in September 2024.
9. Of the Davidson County correctional facilities, CDM averaged 107.0% of capacity, CDF was at 100.3%, and MCC was 102.0% of capacity during September 2024. All the other facilities were below capacity for the month.
10. The ADP of 2,354 for all DCSO facilities in September 2024 was 100.2% of the total system capacity of 2,350 beds.
11. There were 1,858 adult physical arrests made in September 2024. That was 7.8% less than the previous month, but was 15.8% more arrests than in September 2023.



Disclaimer: All reports and other documents generated by Criminal Justice Planning are based on information drawn from databases owned and maintained by other agencies of state and local government. Therefore, Criminal Justice Planning can not guarantee, or assume responsibility for, the accuracy or completeness of the data or information reflected in any reports or other documents.

Average Daily Population Summary by Classification

Month 2024	Total ADP			Total ADP by Gender					
	Total	Monthly Change	Change Since Jan	Male	Monthly Change	Change Since Jan	Female	Monthly Change	Change Since Jan
Jan	2,083	3.2%		1,865	2.9%		218	5.3%	
Feb	2,106	1.1%	1.1%	1,872	0.4%	0.4%	234	7.2%	7.2%
Mar	2,105	0.0%	1.1%	1,882	0.5%	0.9%	222	-4.7%	2.1%
Apr	2,105	0.0%	1.1%	1,885	0.2%	1.1%	220	-1.3%	0.8%
May	2,114	0.4%	1.5%	1,890	0.2%	1.3%	224	2.0%	2.8%
Jun	2,199	4.0%	5.6%	1,966	4.0%	5.4%	233	4.1%	7.0%
Jul	2,291	4.2%	10.0%	2,033	3.4%	9.0%	258	10.5%	18.3%
Aug	2,340	2.1%	12.3%	2,070	1.8%	11.0%	270	4.8%	24.0%
Sep	2,354	0.6%	13.0%	2,097	1.3%	12.5%	257	-5.0%	17.8%
Oct									
Nov									
Dec									
AVG	2,188	1.7%		1,951	1.6%		237	2.6%	

Month 2024	PTF	Monthly Change	Change Since Jan	PTM	Monthly Change	Change Since Jan	CM+DUI	Monthly Change	Change Since Jan
Jan	1,013	3.90%		138	19.7%		127	-1.5%	
Feb	1,031	1.8%	1.8%	134	-3.3%	-3.3%	133	4.2%	4.2%
Mar	1,011	-1.9%	-0.2%	141	5.4%	1.9%	140	5.2%	9.6%
Apr	1,014	0.3%	0.0%	127	-9.8%	-8.1%	136	-2.6%	6.8%
May	1,016	0.2%	0.3%	139	9.6%	0.7%	140	3.0%	10.0%
Jun	1,073	5.6%	5.9%	150	7.4%	8.2%	134	-4.0%	5.6%
Jul	1,135	5.9%	12.1%	156	4.4%	13.0%	151	12.4%	18.6%
Aug	1,166	2.7%	15.1%	164	5.0%	18.6%	163	8.0%	28.1%
Sep	1,195	2.5%	17.9%	168	2.6%	21.6%	138	-15.5%	8.3%
Oct									
Nov									
Dec									
AVG	1,072	2.31%		146	4.5%		140	1.0%	

ADP	Average Daily Population
PTF	Pretrial Felons
PTM	Pretrial Misdemeanants
CM+DUI	Convicted Misdemeanants including DUI's

Notes:

*Classification and gender subtotals may not sum to the monthly total due to rounding.

Source: DCSO Penjail data representing the 11:00 pm facility count.

Average Daily Population Summary by Classification

Month 2024	LSF	Monthly Change	Change Since Jan	PVF	Monthly Change	Change Since Jan
Jan	438	-2.3%		160	6.4%	
Feb	439	0.3%	0.3%	159	0.0%	0.0%
Mar	448	2.0%	2.3%	154	-3.5%	-3.5%
Apr	446	-0.5%	1.9%	162	5.5%	1.8%
May	439	-1.6%	0.3%	154	-5.3%	-3.5%
Jun	433	-1.3%	-1.0%	168	9.2%	5.4%
Jul	419	-3.3%	-4.3%	190	12.9%	19.0%
Aug	424	1.2%	-3.2%	186	-2.2%	16.4%
Sep	447	5.6%	2.2%	180	-2.9%	13.0%
Oct						
Nov						
Dec						
AVG	437	0.0%		168	2.2%	

Month 2024	PVM	Monthly Change	Change Since Jan	OTHER (a)	Monthly Change	Change Since Jan	TDOC (b)	Monthly Change	Change Since Jan
Jan	27	10.5%		16	-38.5%		164	8.8%	
Feb	32	18.3%	18.3%	17	9.5%	9.5%	160	-2.2%	-2.2%
Mar	31	-2.4%	15.5%	17	-2.6%	6.7%	163	1.9%	-0.4%
Apr	31	0.2%	15.7%	13	-22.2%	-17.0%	175	7.4%	7.0%
May	34	7.7%	24.6%	9	-29.1%	-41.1%	183	4.2%	11.5%
Jun	40	18.3%	47.4%	10	2.3%	-39.8%	192	4.9%	17.0%
Jul	46	14.3%	68.5%	10	4.5%	-37.0%	184	-3.9%	12.4%
Aug	49	7.0%	80.3%	8	-18.0%	-48.4%	181	-1.9%	10.3%
Sep	45	-9.0%	64.0%	7	-10.4%	-53.8%	174	-3.8%	6.1%
Oct									
Nov									
Dec									
AVG	37	7.2%		12	-11.6%		175	1.7%	

LSF	Locally Sentenced Felons
PVF	Probation Violators, Felony
PVM	Probation Violators, Misdemeanor
TDOC	State Sentenced Felons
OTHER	All other classifications including Federal

Notes:

*Classification and gender subtotals may not sum to the monthly total due to rounding.

(a) Other classifications include the following charge classes: CIVCON, FED (including ICE Detainer or Custody holds), GOVERNOR, NONE, NULL.

(b) TDOC classifications include: SPARVIO, STATESPL, STATE. They are State sentenced felons waiting transfer to TN Dept of Correction, State/split felons serving a split sentence of State confinement and probation, and State parole violators.

Source: DCSO Penjail data representing the 11:00 pm facility count.

**Percent of Population by Classification
Including LSF Inmates**

THESE TABLES INCLUDE LOCALLY SENTENCED FELONS

Month 2024	ADP	PTF	PTM	CM/DUI	LSF	PVF	PVM	OTHER (a)	TDOC (b)
Jan	2,083	48.6%	6.6%	6.1%	21.0%	7.7%	1.3%	0.8%	7.9%
Feb	2,106	49.0%	6.4%	6.3%	20.9%	7.6%	1.5%	0.8%	7.6%
Mar	2,105	48.0%	6.7%	6.6%	21.3%	7.3%	1.5%	0.8%	7.8%
Apr	2,105	48.2%	6.0%	6.5%	21.2%	7.7%	1.5%	0.6%	8.3%
May	2,114	48.1%	6.6%	6.6%	20.8%	7.3%	1.6%	0.4%	8.6%
Jun	2,199	48.8%	6.8%	6.1%	19.7%	7.6%	1.8%	0.4%	8.7%
Jul	2,291	49.6%	6.8%	6.6%	18.3%	8.3%	2.0%	0.4%	8.0%
Aug	2,340	49.8%	7.0%	7.0%	18.1%	7.9%	2.1%	0.4%	7.7%
Sep	2,354	50.8%	7.1%	5.9%	19.0%	7.7%	1.9%	0.3%	7.4%
Oct									
Nov									
Dec									
AVG	2,188	49.0%	6.7%	6.4%	20.0%	7.7%	1.7%	0.6%	8.0%

Month 2024	ADP	Percent Change	
		Monthly	Since Jan
Jan	2,083	0.0%	
Feb	2,106	1.1%	1.1%
Mar	2,105	0.0%	1.1%
Apr	2,105	0.0%	1.1%
May	2,114	0.4%	1.5%
Jun	2,199	4.0%	5.6%
Jul	2,291	4.2%	10.0%
Aug	2,340	2.1%	12.3%
Sep	2,354	0.6%	13.0%
Oct			
Nov			
Dec			

Notes:

(a) Other classifications include the following charge classes: CIVCON, FED (including ICE Detainer or Custody holds), GOVERNOR, NONE, NULL. Detainer or Custody Holds).

(b) TDOC classifications include: SPARVIO, STATESPL, STATE. They are State sentenced felons waiting transfer to TN Dept of Correction, State/split felons serving a split sentence of State confinement and probation, and State parole violators.

Source: DCSO Penjail data representing the 11:00 pm facility count.

Percent of Population by Classification
Excluding LSF Inmates

THESE TABLES EXCLUDE LOCALLY SENTENCED FELONS

Month 2024	ADP	PTF	PTM	CM/DUI	PVF	PVM	OTHER (a)	TDOC (b)
Jan	1,645	61.6%	8.4%	7.7%	9.7%	1.6%	1.0%	10.0%
Feb	1,667	61.9%	8.0%	8.0%	9.6%	1.9%	1.0%	9.6%
Mar	1,657	61.0%	8.5%	8.4%	9.3%	1.9%	1.0%	9.9%
Apr	1,659	61.1%	7.7%	8.2%	9.8%	1.9%	0.8%	10.6%
May	1,675	60.6%	8.3%	8.4%	9.2%	2.0%	0.6%	10.9%
Jun	1,766	60.7%	8.5%	7.6%	9.5%	2.3%	0.5%	10.9%
Jul	1,872	60.6%	8.3%	8.1%	10.1%	2.4%	0.5%	9.8%
Aug	1,916	60.8%	8.6%	8.5%	9.7%	2.6%	0.4%	9.4%
Sep	1,907	62.7%	8.8%	7.2%	9.5%	2.3%	0.4%	9.1%
Oct								
Nov								
Dec								
AVG	1,752	61.2%	8.3%	8.0%	9.6%	2.1%	0.7%	10.0%

Month 2024	ADP	Percent Change	
		Monthly	Since Jan
Jan	1,645	3.7%	
Feb	1,667	1.3%	1.3%
Mar	1,657	-0.6%	0.7%
Apr	1,659	0.1%	0.9%
May	1,675	1.0%	1.8%
Jun	1,766	5.4%	7.3%
Jul	1,872	6.0%	13.8%
Aug	1,916	2.3%	16.5%
Sep	1,907	-0.5%	15.9%
Oct			
Nov			
Dec			

Notes:

(a) Other classifications include the following charge classes: CIVCON, FED (including ICE Detainer or Custody holds), GOVERNOR, NONE, NULL. Detainer or Custody Holds).

(b) TDOC classifications include: SPARVIO, STATESPL, STATE. They are State sentenced felons waiting transfer to TN Dept of Correction, State/split felons serving a split sentence of State confinement and probation, and State parole violators.

Source: DCSO Penjail data representing the 11:00 pm facility count.

Percent Change in the Average Daily Population from Current Year to Previous Year

Month	ADP			PTF			PTM		
	2023	2024	% Change	2023	2024	% Change	2023	2024	% Change
Jan	1,838	2,083	13.3%	917	1,013	10.5%	116	138	19.0%
Feb	1,846	2,106	14.1%	900	1,031	14.5%	109	134	22.8%
Mar	1,941	2,105	8.4%	922	1,011	9.6%	133	141	6.0%
Apr	1,965	2,105	7.1%	940	1,014	7.8%	139	127	-8.6%
May	1,937	2,114	9.1%	924	1,016	9.9%	139	139	0.2%
Jun	1,953	2,199	12.6%	939	1,073	14.2%	133	150	12.4%
Jul	1,987	2,291	15.3%	958	1,135	18.5%	140	156	11.6%
Aug	2,064	2,340	13.3%	996	1,166	17.0%	140	164	17.4%
Sep	2,041	2,354	15.3%	969	1,195	23.4%	134	168	25.2%
Oct	2,048			980			126		
Nov	2,086			1,010			122		
Dec	2,019			975			116		
Avg	1,977	2,188	12.1%	953	1,072	13.9%	129	146	11.8%
% Change Curr Yr to Prev Yr			10.7%			12.6%			13.6%

Month	CM+DUI			LSF			PVF		
	2023	2024	% Change	2023	2024	% Change	2023	2024	% Change
Jan	119	127	7.3%	378	438	15.9%	120	160	32.6%
Feb	113	133	17.3%	389	439	12.9%	143	159	11.8%
Mar	111	140	25.6%	394	448	13.5%	153	154	0.8%
Apr	111	136	22.4%	393	446	13.5%	158	162	2.9%
May	115	140	21.9%	391	439	12.1%	149	154	3.3%
Jun	123	134	9.2%	388	433	11.7%	161	168	4.7%
Jul	132	151	14.7%	393	419	6.6%	162	190	17.4%
Aug	140	163	16.4%	391	424	8.2%	181	186	2.4%
Sep	141	138	-2.1%	417	447	7.2%	157	180	14.9%
Oct	144			432			140		
Nov	143			441			144		
Dec	129			448			150		
Avg	127	140	14.7%	405	437	11.3%	151	168	10.1%
% Change Curr Yr to Prev Yr			10.7%			8.0%			11.0%

Month	PVM			Other (a)			TDOC (b)		
	2023	2024	% Change	2023	2024	% Change	2023	2024	% Change
Jan	24	27	12.0%	82	16	-80.6%	82	164	98.9%
Feb	21	32	54.5%	89	17	-80.4%	82	160	95.5%
Mar	26	31	22.8%	103	17	-83.4%	100	163	63.7%
Apr	31	31	2.8%	98	13	-86.6%	95	175	85.4%
May	33	34	3.7%	92	9	-89.7%	94	183	93.5%
Jun	30	40	34.3%	75	10	-87.3%	98	192	95.5%
Jul	27	46	71.3%	72	10	-86.1%	104	184	77.9%
Aug	33	49	49.5%	65	8	-87.4%	118	181	53.8%
Sep	28	45	60.6%	62	7	-88.1%	134	174	30.2%
Oct	22			57			147		
Nov	28			54			144		
Dec	25			26			151		
Avg	27	37	34.6%	73	12	-85.5%	112	175	77.1%
% Change Curr Yr to Prev Yr			37.3%			-83.5%			56.0%

ADP	Average Daily Population		
PTF	Pretrial Felons	PTM	Pretrial Misdemeanants
CM+DUI	Convicted Misdemeanants including DUI's	LSF	Locally Sentenced Felons
PVF	Probation Violators, Felony	PVM	Probation Violators, Misdemeanor
TDOC	State Sentenced Felons		
OTHER	All other classifications including Federal		

Notes:

(a) Other classifications include the following charge classes: CIVCON, FED (including ICE Detainer or Custody holds), GOVERNOR, NONE, NULL. Detainer or Custody Holds).

(b) TDOC classifications include: SPARVIO, STATESPL, STATE. They are State sentenced felons waiting transfer to TN Dept of Correction, State/split felons serving a split sentence of State confinement and probation, and State parole violators.

Source: DCSO Penjail data representing the 11:00 pm facility count.

Average Daily Population By Facility - Detail

2024 Month	DDC - Downtown Detention Center (formerly CJC)			CDM - Correctional Development Center Male			CDF - Correctional Development Center Female			
	Capacity - 762 (a)			Capacity - 768 (f)			Capacity - 252 (as of 12/7/2020) (b)			
	ADP (Includes the Gym and Excludes Processing*)	Percent Change from Previous Month	Average Percent Capacity	ADP	Percent Change from Previous Month	Average Percent Capacity	ADP	Percent Change from Previous Month	Average Percent Capacity	Temporary Covid 19 Males ADP**
Jan	659	13.0%	86.5%	739	23.4%	96.2%	212	25.0%	83.9%	
Feb	657	-0.4%	86.2%	752	1.7%	97.9%	224	6.0%	89.0%	
Mar	662	0.8%	86.8%	756	0.5%	98.4%	217	-3.3%	86.1%	
Apr	663	0.2%	87.0%	753	-0.3%	98.1%	214	-1.1%	85.1%	
May	658	-0.8%	86.4%	767	1.8%	99.8%	218	1.6%	86.4%	
Jun	688	4.5%	90.3%	797	3.9%	103.8%	223	2.5%	88.6%	
Jul	700	1.7%	91.9%	815	2.3%	106.1%	249	11.7%	98.9%	
Aug	722	3.1%	94.7%	817	0.2%	106.4%	260	4.3%	103.1%	
Sep	743	3.0%	97.6%	822	0.6%	107.0%	253	-2.7%	100.3%	
Oct										
Nov										
Dec										
YTD AVG	684	2.8%	89.7%	780	3.8%	101.5%	230	4.9%	91.3%	

*Processing includes all inmates in custody who have not been assigned a bed.

**Males who tested positive for COVID19 temporarily housed in CDCF.

2024 Month	HDC - Hill Detention Center			ORC - Offender Re-Entry Center			BCC - Behavioral Care Center				
	Capacity - 0 (as of 5/6/20) (e)			Capacity - 0 (g)			Capacity - 60 (h)				
	ADP	Percent Change from Previous Month	Average Percent Capacity	ADP	Percent Change from Previous Month	Average Percent Capacity	Male ADP	Female ADP	Total ADP	Percent Change from Previous Month	Average Percent Capacity
Jan	0	0.0%		0	0.0%		6	6	13	-25.4%	21.5%
Feb	0	0.0%		0	0.0%		7	9	17	29.3%	27.8%
Mar	0	0.0%		0	0.0%		13	6	18	9.8%	30.5%
Apr	0	0.0%		0	0.0%		13	5	18	-0.9%	30.3%
May	0	0.0%		0	0.0%		11	6	17	-6.4%	28.3%
Jun	0	0.0%		0	0.0%		17	10	27	56.9%	44.4%
Jul	0	0.0%		0	0.0%		8	9	17	-36.9%	28.1%
Aug	0	0.0%		0	0.0%		19	10	29	72.8%	48.5%
Sep	0	0.0%		0	0.0%		13	4	17	-40.1%	29.1%
Oct											
Nov											
Dec											
YTD AVG	0	0.0%		0	0.0%		12	7	19	6.6%	32.1%

2024 Month	MCC - Maximum Correctional Center					MDF - Metro Davidson County Detention Facility				
	Capacity - 508 (as of 12/7/2020) (b)					Capacity - 0 (as of 12/7/2020) (c)				
	Male ADP	Female ADP	Total ADP	Percent Change from Previous Month	Average Percent Capacity	Male ADP*	Female ADP	Total ADP	Percent Change from Previous Month	Average Percent Capacity
Jan	460	0	460	8.8%	90.6%	0	0	0	0.0%	0.0%
Feb	457	0	457	-0.8%	89.9%	0	0	0	0.0%	0.0%
Mar	452	0	452	-0.9%	89.0%	0	0	0	0.0%	0.0%
Apr	456	0	456	0.8%	89.8%	0	0	0	0.0%	0.0%
May	454	0	454	-0.4%	89.4%	0	0	0	0.0%	0.0%
Jun	465	0	465	2.3%	91.5%	0	0	0	0.0%	0.0%
Jul	510	0	510	9.8%	100.4%	0	0	0	0.0%	0.0%
Aug	512	0	512	0.4%	100.9%	0	0	0	0.0%	0.0%
Sep	518	0	518	1.2%	102.0%	0	0	0	0.0%	0.0%
Oct										
Nov										
Dec										
YTD AVG	476	0	476	2.3%	93.7%	0	0	0	0.0%	0.0%

*Inmates are occasionally temporarily housed in MDF due to issues in other facilities (environmental, quarantine, etc).

*Facility notes are found on page 8.

Average Daily Population By Facility - Summary

Total All Facilities				
Capacity - 2,350 (as of 12/7/20) (d)				
2024 Month	ADP	Percent Change from Previous Month	Average Percent Capacity	System Capacity
Jan	2,083	3.1%	88.6%	2,350
Feb	2,106	1.1%	89.6%	2,350
Mar	2,105	0.0%	89.6%	2,350
Apr	2,105	0.0%	89.6%	2,350
May	2,114	0.4%	89.9%	2,350
Jun	2,199	4.0%	93.6%	2,350
Jul	2,291	4.2%	97.5%	2,350
Aug	2,340	2.1%	99.6%	2,350
Sep	2,354	0.6%	100.2%	2,350
Oct				2,350
Nov				2,350
Dec				2,350
YTD AVG	2,188	1.7%	93.1%	

Total DCSO Facilities				
Capacity - 2,350 (as of 12/7/20)				
2024 Month	ADP	Percent Change from Previous Month	Average Percent Capacity	System Capacity
Jan	2,083	3.1%	88.6%	2,350
Feb	2,106	1.1%	89.6%	2,350
Mar	2,105	0.0%	89.6%	2,350
Apr	2,105	0.0%	89.6%	2,350
May	2,114	0.4%	89.9%	2,350
Jun	2,199	4.0%	93.6%	2,350
Jul	2,291	4.2%	97.5%	2,350
Aug	2,340	2.1%	99.6%	2,350
Sep	2,354	0.6%	100.2%	2,350
Oct				2,350
Nov				2,350
Dec				2,350
YTD AVG	2,188	1.7%	93.1%	

Last Date Facility was Below 100% Capacity*		
Facility	Date	Current Consecutive Days in 2024 Over Capacity
DDC	9/30/24	0
CDM	9/30/24	128
CDF	9/30/24	7
HDC	9/30/24	0
ORC	9/30/24	0
BCC	9/30/24	0
MCC	9/30/24	0
MDF	9/30/24	0
*Between Jan 1 and December 31, 2024.		

Notes:

- (a) Capacity at CJC increased to 807 from 705 in October 2007 through recertification. Capacity decreased to 800 in November 2012 and again to 788 in August 2013. CJC closed for renovation 8/13/16. On 4/16/2020 it began housing inmates and was renamed DDC; new capacity is 762.
- (b) CDF opened in March 2006 when all female inmates were moved there from MDF. In May 2016 all females were moved out of CDF and into MDF; then in August 2016 CDF reopened as MCC (Maximum Correctional Center) and began housing male inmates as a result of renovations at CJC. The capacity at MCC remained at 508. In May 2020, MCC was renamed back to CDF and females were moved from MDF to CDF. Starting 6/25/2020, males testing positive for COVID19 were temporarily housed at CDF. Starting December 2020 due to the temporary closing of MDF, females were housed at CDF (capacity 252), males were housed at MCC (capacity 508).
- (c) Capacity for MDF increased to 1,092 from 892 on 11/1/2005 through recertification. It increased to 1,348 in June 2011. Locally sentenced felon females were moved there in July 2011. In May 2016 all female inmates were moved to MDF because of renovations at CJC. In May 2020, females were moved out of MDF back to CDF. In December 2020, inmates were moved out of MDF into MCC and the facility was temporarily closed by 12/7/2020. Starting Feb 2021, MDF was sometimes used to temporarily house inmates moved from other facilities due to environmental reasons; system capacity remained the same.
- (d) Total capacity for all facilities increased from 3,679 to 3,781 in October 2007; from 3,781 to 3,842 in December 2007; from 3,842 to 4,010 in February 2008, from 4,010 to 4,266 in June 2011. It decreased to 4,259 in November 2012, and again to 4,247 in August 2013. With the temporary closing of CJC in August 2016 due to renovations, the capacity became 3,459. In April 2019, ORC closed so the capacity decreased to 3,159. CJC reopened as DDC in April 2020, resulting in a new capacity of 3,921. In May 2020 the HDC closed, resulting in a capacity of 3,386. The capacity increased to 3,446 on 9/14/2020 with the opening of BCC. On 12/7/2020, system capacity decreased to 2,350 with the temporary closing of MDF and resulting changes to MCC and CDF.
- (e) Total capacity for HDC increased from 474 to 535 in December 2007. Booking functions were moved to HDC in August 2016 due to renovations at CJC, but the capacity remained at 535. HDC was closed on 5/6/2020 and all inmates were moved to DDC.
- (f) Total capacity for CDM increased from 600 to 768 in February 2008.
- (g) ORC temporarily closed in January 2011. It reopened in May 2016 to house inmates due to renovations at CJC; capacity was 300. ORC was closed on 4/7/2019.
- (h) BCC opened on 9/14/2020 with a capacity of 60, comprised of 30 males and 30 females.

Adult Physical Arrests

MONTH	2023	2024	% Change		
			Previous Month to Current Month	2023 Month to 2024 Month	Since January 2024
Jan	1,459	1,567	1.5%	7.4%	
Feb	1,549	1,738	10.9%	12.2%	10.9%
Mar	1,800	1,882	8.3%	4.6%	20.1%
Apr	1,528	1,847	-1.9%	20.9%	17.9%
May	1,742	2,020	9.4%	16.0%	28.9%
Jun	1,653	1,911	-5.4%	15.6%	22.0%
Jul	1,786	1,964	2.8%	10.0%	25.3%
Aug	1,777	2,015	2.6%	13.4%	28.6%
Sep	1,604	1,858	-7.8%	15.8%	18.6%
Oct	1,638				
Nov	1,584				
Dec	1,544				
YTD Total	19,664	16,802	MONTH	Avg: 12.9%	18.6%

MONTH	2023 YTD TOTAL	2024 YTD TOTAL	2023 YTD to 2024 YTD % Change
Jan	1,459	1,567	7.4%
Feb	3,008	3,305	9.9%
Mar	4,808	5,187	7.9%
Apr	6,336	7,034	11.0%
May	8,078	9,054	12.1%
Jun	9,731	10,965	12.7%
Jul	11,517	12,929	12.3%
Aug	13,294	14,944	12.4%
Sep	14,898	16,802	12.8%
Oct	16,536		
Nov	18,120		
Dec	19,664		

Source: Metropolitan Nashville Police Department, data pulled on 10/21/2024. Adult arrests only. Expungements were removed.

Note: This report includes the number of adult physical arrests made in Davidson County during the time period. A physical arrest is a custodial arrest and represents an individual body and not the number of charges issued to a person. Expungements are removed.