

ESTIMATED QUANTITIES

SPEED CUSHIONS

6' X14' SPEED CUSHION WITH ONE ARROW	10
--------------------------------------	----

SIGNING

W17-1 (VAR.) "SPEED CUSHION" SIGN (30" X 30")	10
W13-1P "20 M.P.H" SIGN (18" X 18")	10

NOTE: ALL LOCATIONS ARE REFERENCED FROM CENTERLINE OF DRIVEWAYS OR OTHER LANDMARKS TO THE CENTER OF SPEED CUSHIONS OR SIGNS.

LEGEND

-  LIMITS OF TRAFFIC CALMING PROJECT
-  SPEED CUSHIONS



DESIGNED BY:	DHT
DRAWN BY:	DKW
CHECKED BY:	NDOT
DATE:	1/29/2024
KIMLEY-HORN PROJECT NO. 118800046	

KEY
SHEET NUMBER
01

STONES RIVER
BEND PARK

STONES RIVER

SHEET 02

SHEET 03

LEBANON PIKE

MCGAVOCK PIKE

GRAYLYNN DR

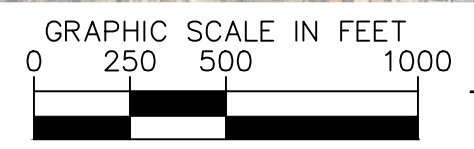
SPRING VALLEY RD

OVERHILL CIR

CUMBERLAND CIR

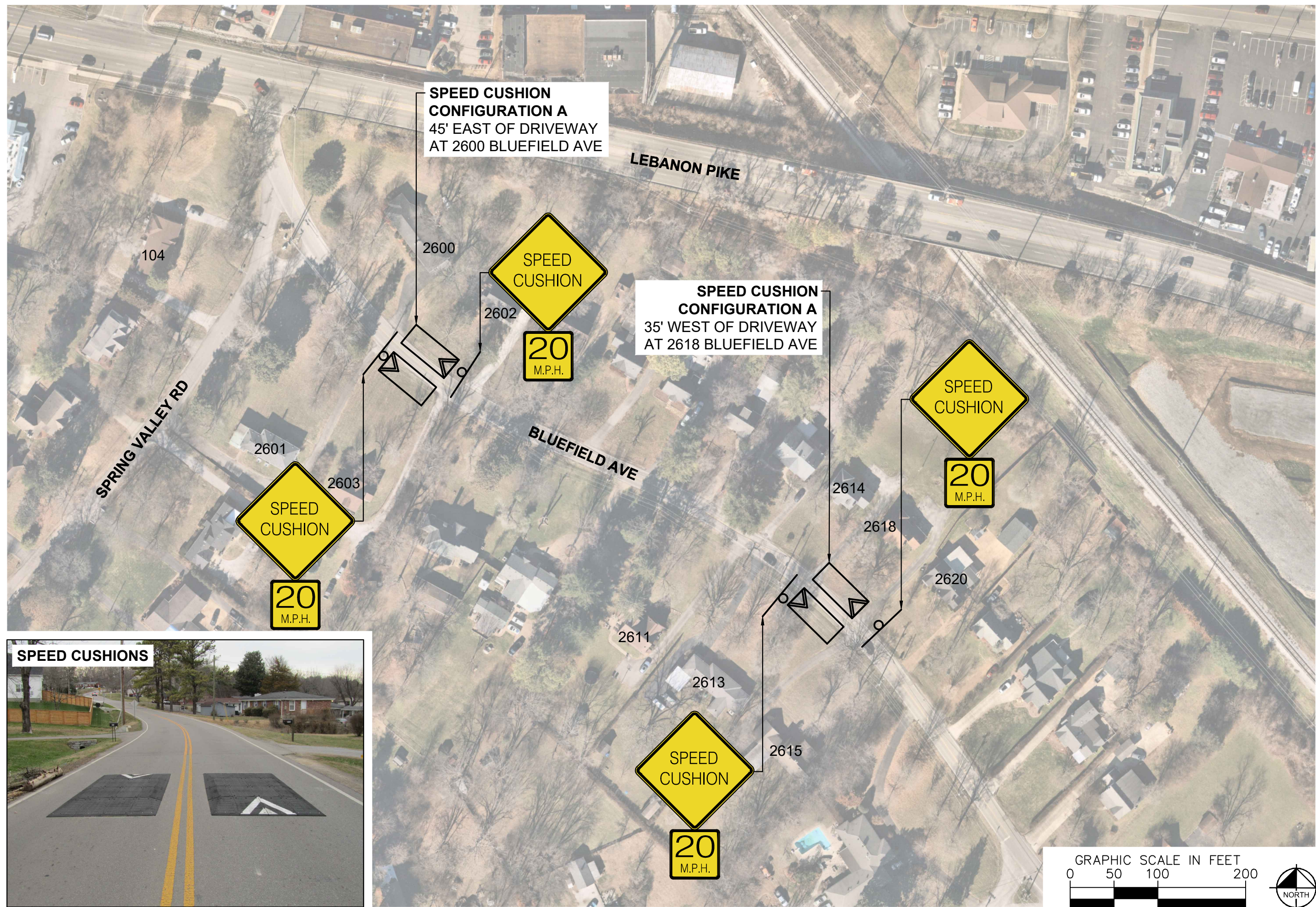
BLUEFIELD AVE

DONELSON PIKE

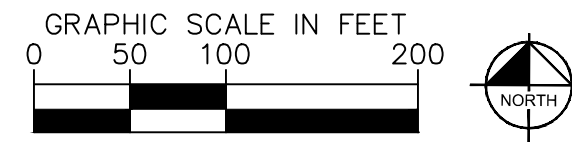


This document, together with the concepts and designs presented herein, is intended only for the specific purpose and client for which it was prepared. Reuse of and improper reliance on this document without written authorization and adaptation by Kimley-Horn and Associates, Inc. shall be without liability to Kimley-Horn and Associates, Inc.

This document, together with the concepts and designs presented herein, is intended only for the specific purpose and client for which it was prepared. Reuse of and improper reliance on this document without written authorization and adaptation by Kimley-Horn and Associates, Inc. shall be without liability to Kimley-Horn and Associates, Inc.



SPEED CUSHIONS



NDOT

**BLUEFIELD AVENUE
TRAFFIC CALMING**
NASHVILLE, TN

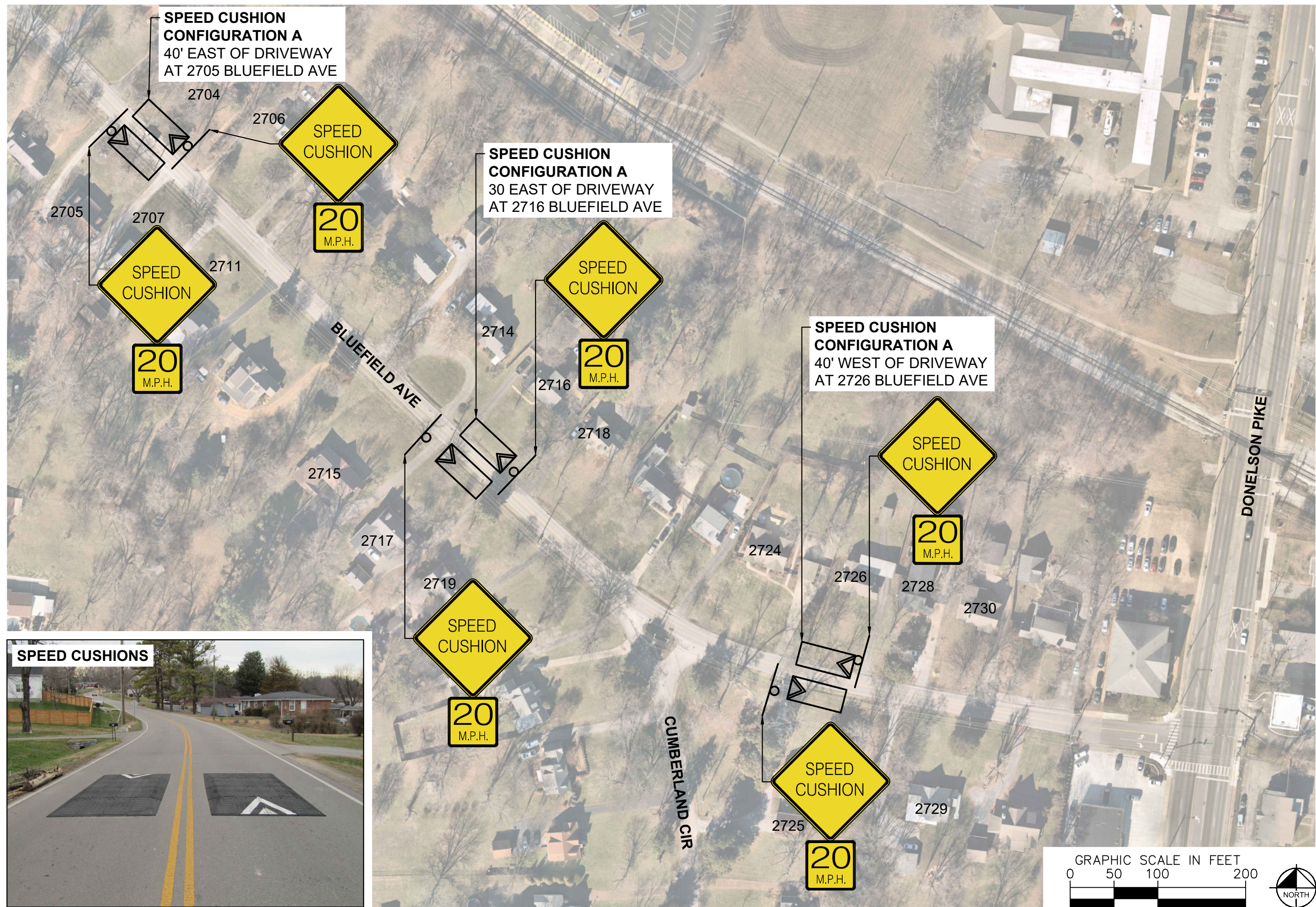


Kimley-Horn

DESIGNED BY:	DHT
DRAWN BY:	DKW
CHECKED BY:	NDOT
DATE:	1/29/2024
KIMLEY-HORN PROJECT NO.:	118900046

CONCEPT
SHEET NUMBER
02

This document, together with the concepts and designs presented herein, is intended only for the specific purpose and client for which it was prepared. Reuse or improper reliance on this document without written authorization and adaptation by Kimley-Horn and Associates, Inc. shall be without liability to Kimley-Horn and Associates, Inc.



SPEED CUSHION CONFIGURATION A
40' EAST OF DRIVEWAY
AT 2705 BLUEFIELD AVE

SPEED CUSHION CONFIGURATION A
30 EAST OF DRIVEWAY
AT 2716 BLUEFIELD AVE

SPEED CUSHION CONFIGURATION A
40' WEST OF DRIVEWAY
AT 2726 BLUEFIELD AVE

SPEED CUSHIONS



NDOT

BLUEFIELD AVENUE
TRAFFIC CALMING
NASHVILLE, TN



Kimley-Horn

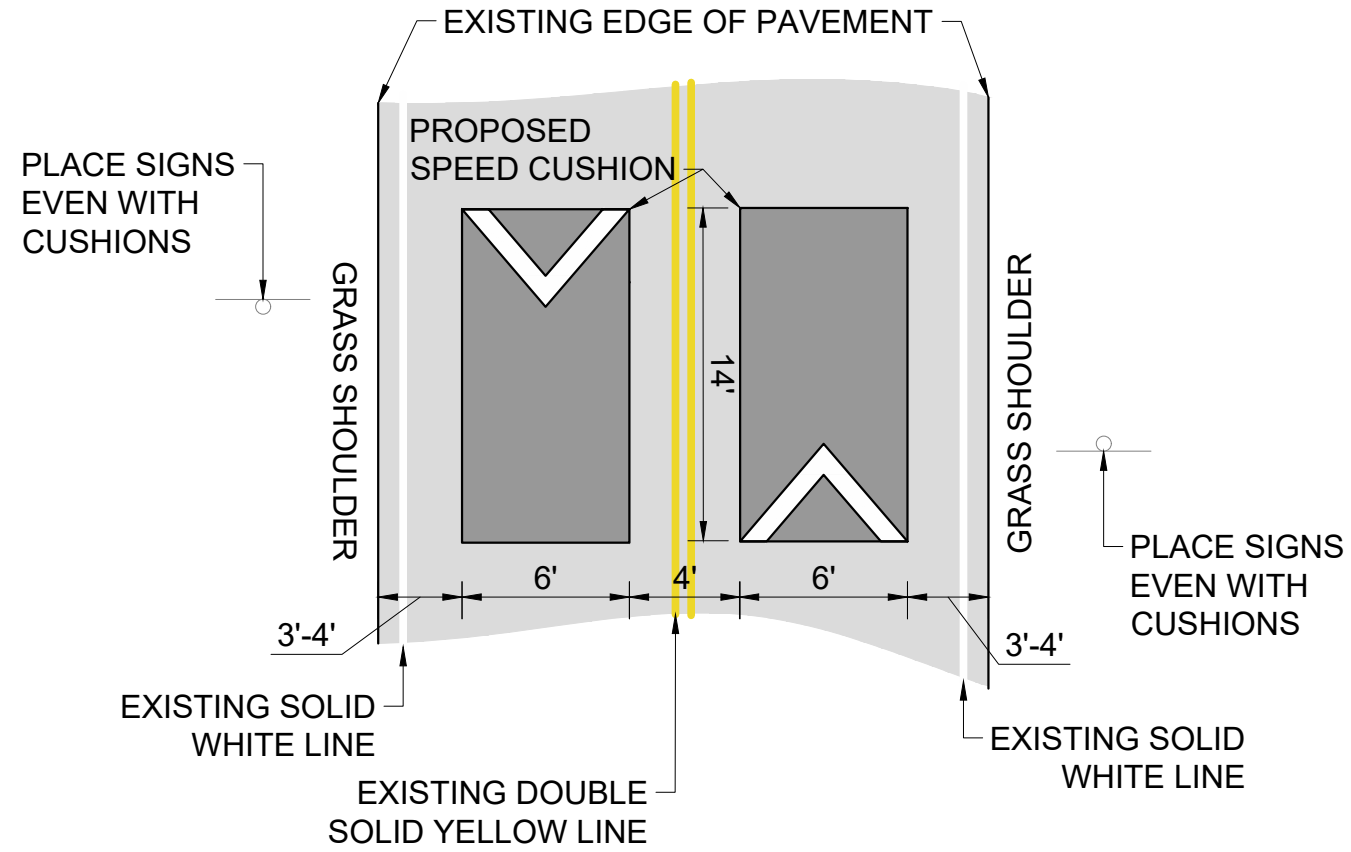
DESIGNED BY: DHT
DRAWN BY: DKW
CHECKED BY: NDOT
DATE: 1/29/2024
KIMLEY-HORN PROJECT NO. 118900046

CONCEPT
SHEET NUMBER
03

This document, together with the concepts and designs presented herein, as an instrument of service, is intended only for the specific purpose and client for which it was prepared. Reuse of and improper reliance on this document without written authorization and adaptation by Kimley-Horn and Associates, Inc. shall be without liability to Kimley-Horn and Associates, Inc.

CONFIGURATION A

22' - 24' OF PAVEMENT



BLUEFIELD AVENUE
TRAFFIC CALMING
NASHVILLE, TN



DESIGNED BY:	DHT
DRAWN BY:	DKW
CHECKED BY:	NDOT
DATE:	1/29/2024
KIMLEY-HORN PROJECT NO.	118800046

DETAIL

SHEET NUMBER
04