

ESTIMATED QUANTITIES

SPEED CUSHIONS

6' X 10.5' SPEED CUSHION WITH ONE ARROW	6
6' X 10.5' SPEED CUSHION TWO ARROWS	12

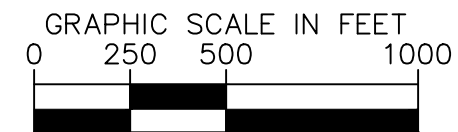
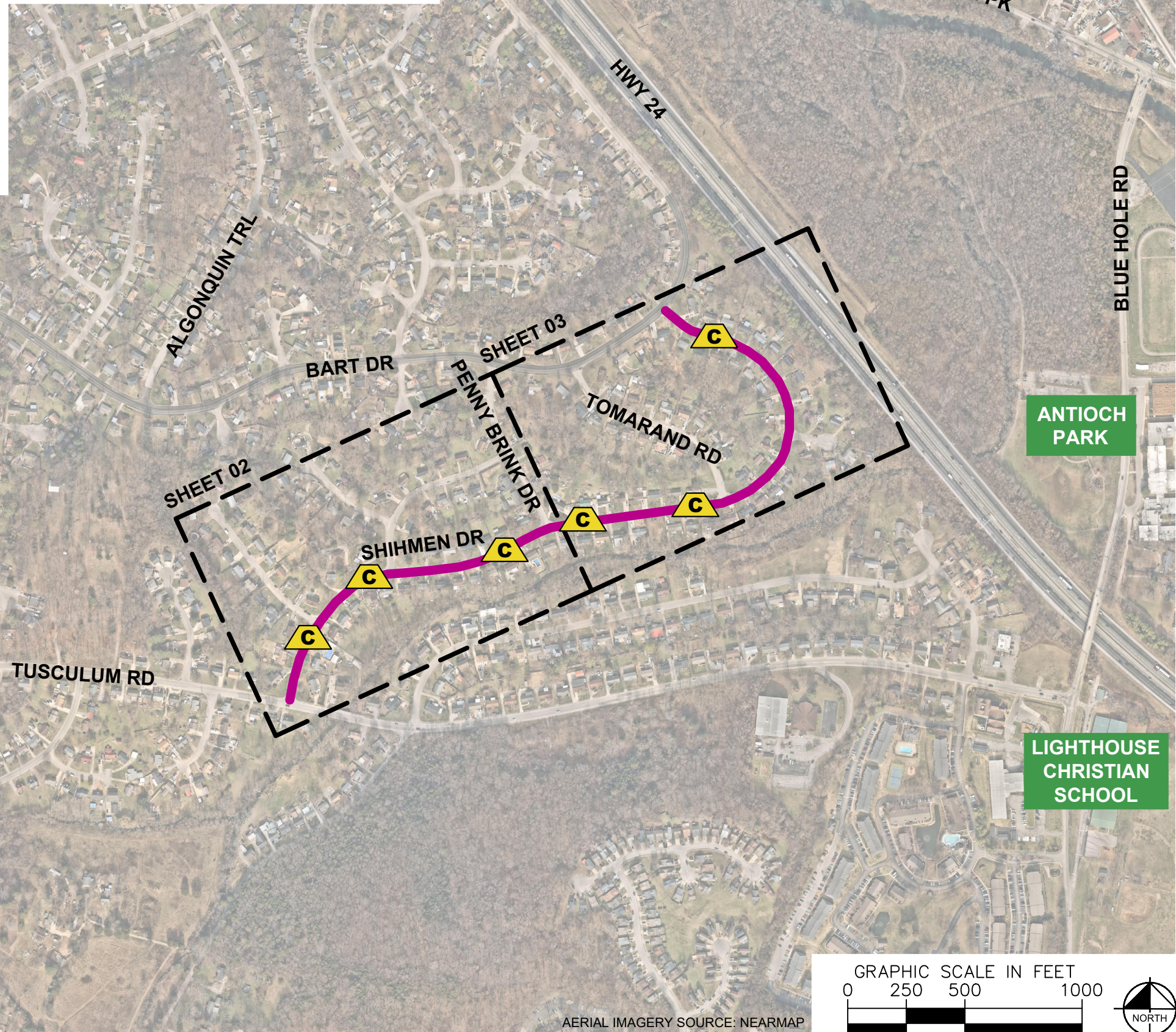
SIGNING

W17-1 (VAR.) "SPEED CUSHION" SIGN (30" X 30")	4
W17-1 (VAR.) "SPEED CUSHIONS AHEAD" SIGN (30" X 30")	4
W13-1P "20 M.P.H" SIGN (18" X 18")	8

NOTE: ALL LOCATIONS ARE REFERENCED FROM CENTERLINE OF DRIVEWAYS OR OTHER LANDMARKS TO THE CENTER OF SPEED CUSHIONS OR SIGNS.

LEGEND

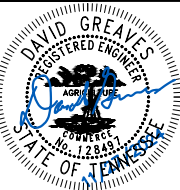
-  LIMITS OF TRAFFIC CALMING PROJECT
-  SPEED CUSHIONS



AERIAL IMAGERY SOURCE: NEARMAP



SHIHMEN DRIVE
TRAFFIC CALMING
NASHVILLE, TN

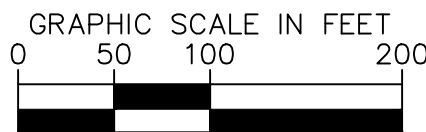
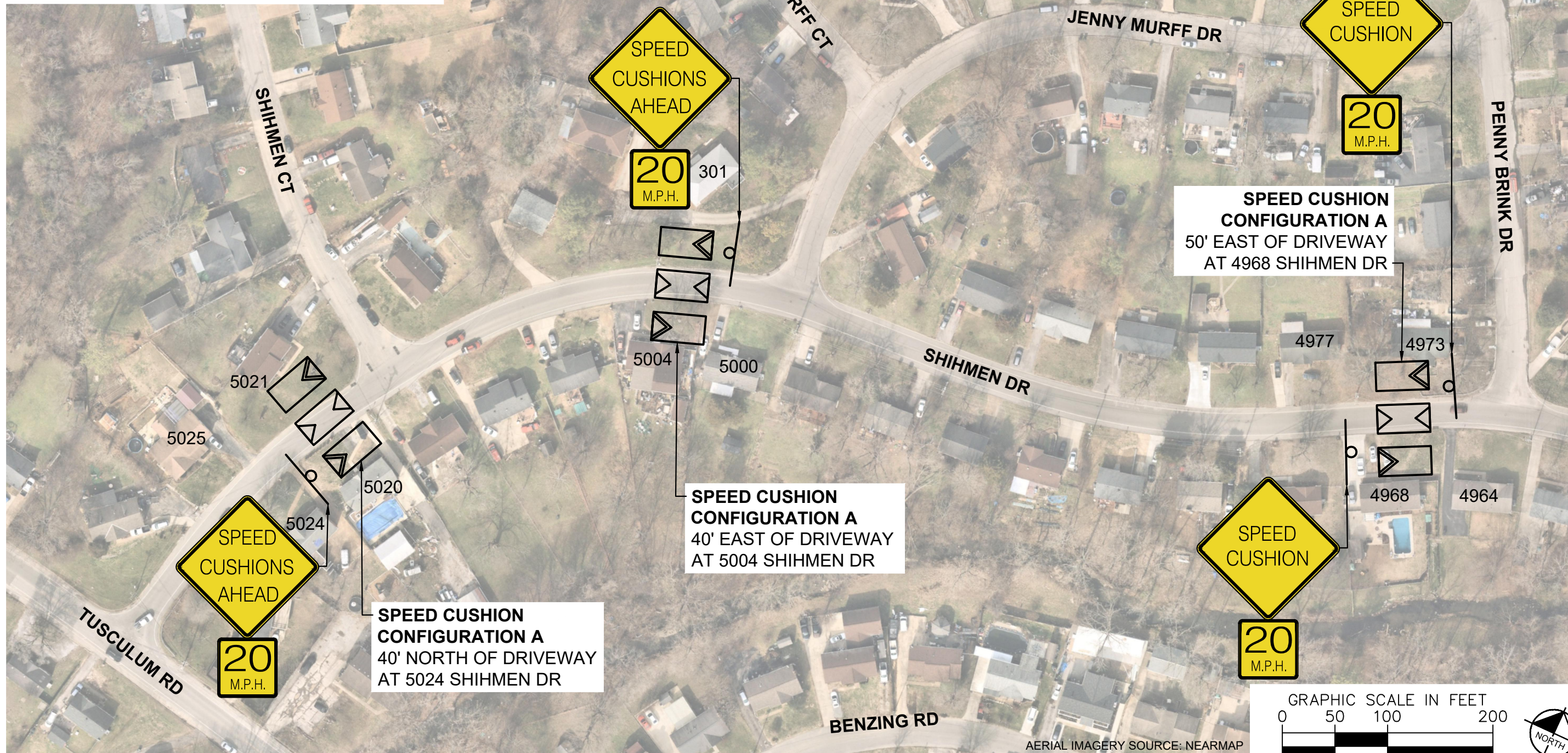


DESIGNED BY:	DJG
DRAWN BY:	RJS
CHECKED BY:	NDOT
DATE:	11/27/2024
KIMLEY-HORN PROJECT NO. 11890046	

KEY
SHEET NUMBER
01

This document, together with the concepts and designs presented herein, is intended only for the specific purpose and client for which it was prepared. Reuse or improper reliance on this document without written authorization and adaptation by Kimley-Horn and Associates, Inc. shall be without liability to Kimley-Horn and Associates, Inc.

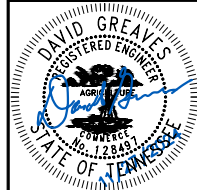
SPEED CUSHIONS



AERIAL IMAGERY SOURCE: NEARMAP



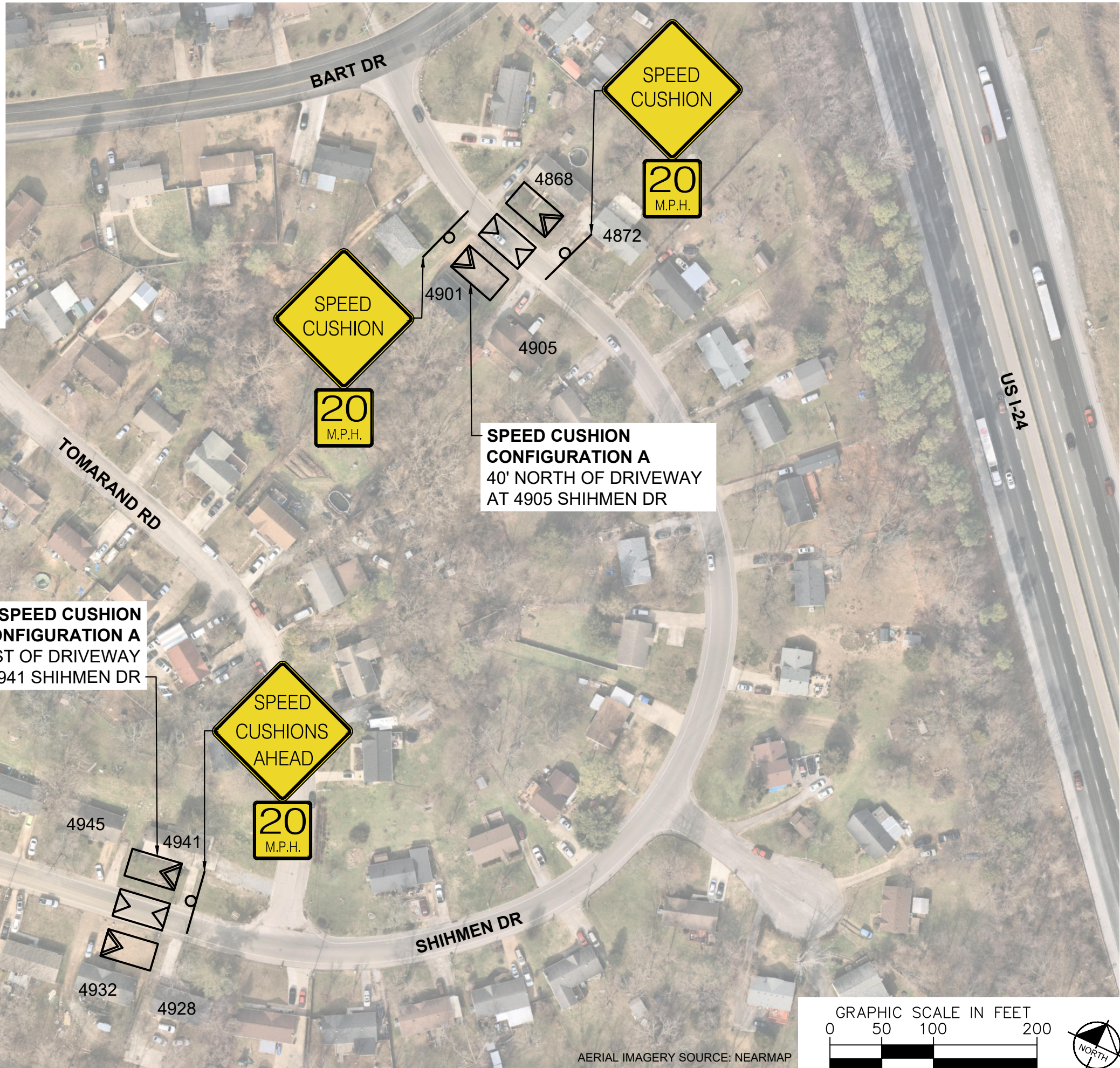
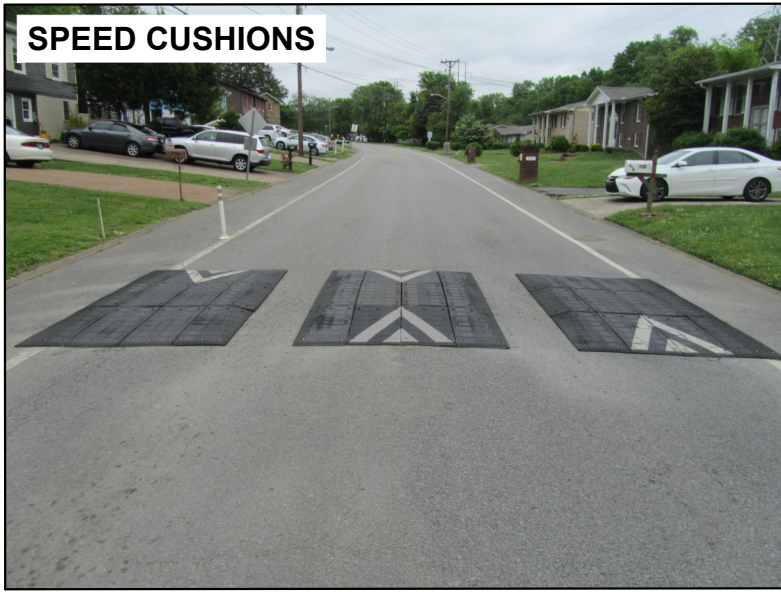
SHIHMEN DRIVE
TRAFFIC CALMING
NASHVILLE, TN



DESIGNED BY:	DJG
DRAWN BY:	RJS
CHECKED BY:	NDOT
DATE:	11/27/2024
KIMLEY-HORN PROJECT NO. 11890046	

CONCEPT
SHEET NUMBER
02

SPEED CUSHIONS



SPEED CUSHION CONFIGURATION A
35' EAST OF DRIVEWAY
AT 4969 SHIHMEN DR

SPEED CUSHION CONFIGURATION A
40' NORTH OF DRIVEWAY
AT 4905 SHIHMEN DR

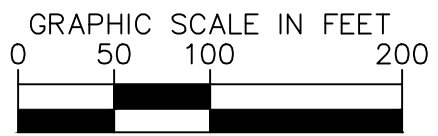
SPEED CUSHION CONFIGURATION A
35' WEST OF DRIVEWAY
AT 4941 SHIHMEN DR

SPEED CUSHIONS AHEAD
20 M.P.H.

SPEED CUSHIONS AHEAD
20 M.P.H.

SPEED CUSHION
20 M.P.H.

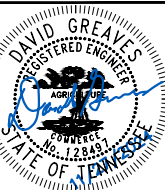
SPEED CUSHION
20 M.P.H.



AERIAL IMAGERY SOURCE: NEARMAP



SHIHMEN DRIVE
TRAFFIC CALMING
NASHVILLE, TN

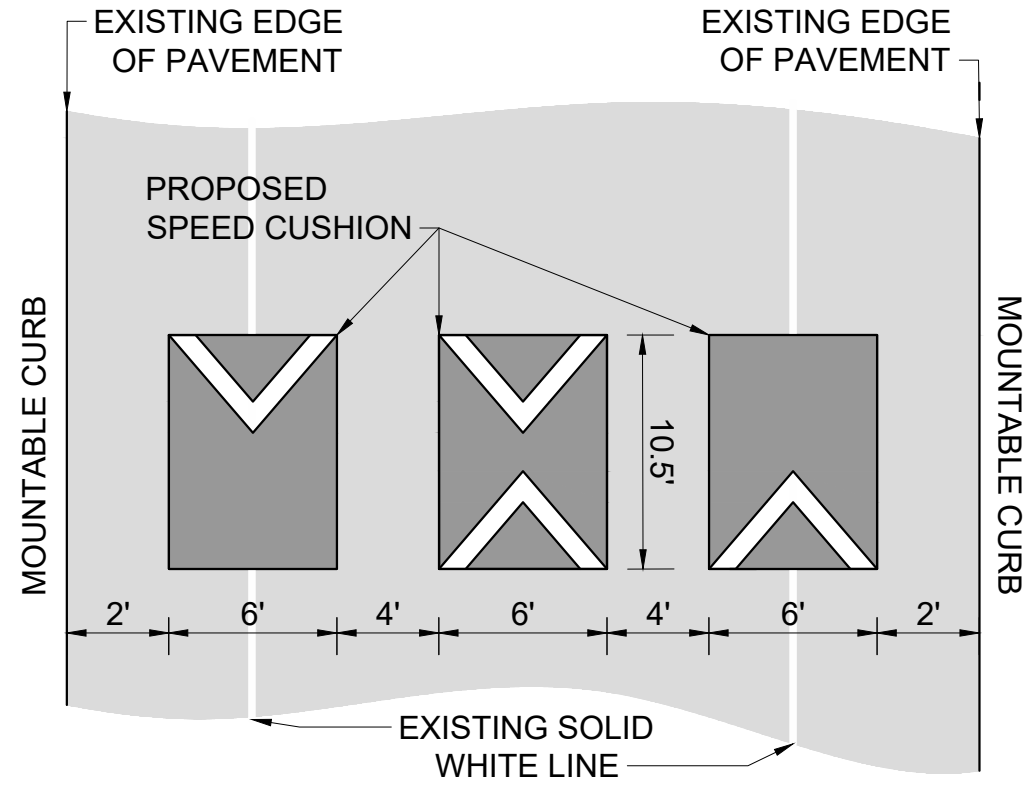


DESIGNED BY:	DJG
DRAWN BY:	RJS
CHECKED BY:	NDOT
DATE:	11/27/2024
KIMLEY-HORN PROJECT NO.:	11890046

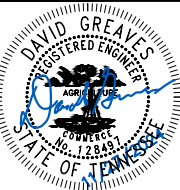
CONCEPT
SHEET NUMBER
03

CONFIGURATION A

30' OF PAVEMENT



SHIHMEN DRIVE
TRAFFIC CALMING
NASHVILLE, TN



DESIGNED BY:	DJG
DRAWN BY:	RJS
CHECKED BY:	NDOT
DATE:	11/27/2024
KIMLEY-HORN PROJECT NO. 118800046	

DETAIL

SHEET NUMBER
04

This document, together with the concepts and designs presented herein, is intended only for the specific purpose and client for which it was prepared. Reuse of and improper reliance on this document without written authorization and adaptation by Kimley-Horn and Associates, Inc. shall be without liability to Kimley-Horn and Associates, Inc.