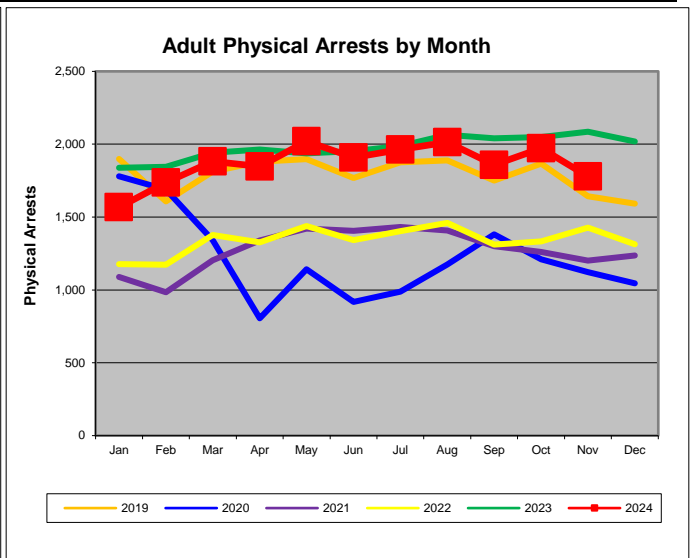
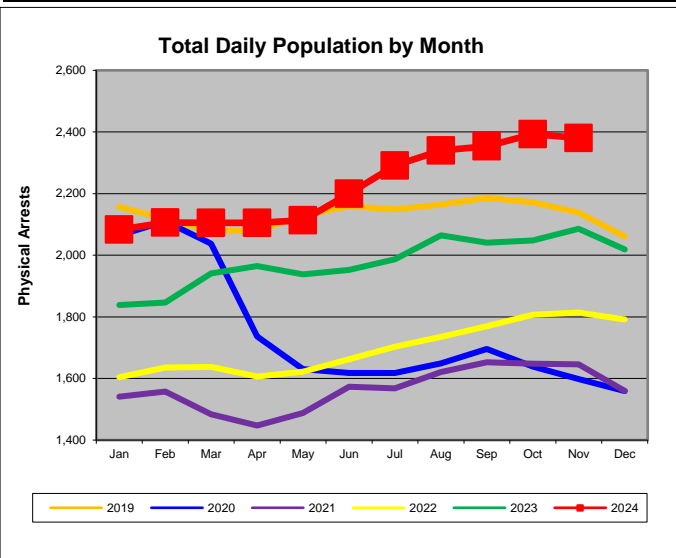


## AVERAGE DAILY POPULATION REPORT Davidson County Correctional Facilities

### Overview of November 2024

1. The ADP in November 2024 was 2,381 which was 0.5% lower than the previous month. The ADP was 14.1% higher than in November 2023, when the population was 2,086.
2. The ADP for Pretrial Felons was 1,223 which was 0.1% higher than the previous month, and was 21.1% higher than the ADP of 1,010 in November 2023.
3. The ADP for Pretrial Misdemeanants was 151, which was 9.0% lower than the previous month, but was 23.9% higher than the ADP of 122 in November 2023.
4. In November 2024 the ADP for Convicted Misdemeanants & DUIs (CM+DUI) was 156. That was 4.2% higher than the previous month, and was 9.4% higher than the ADP of 143 in November 2023.
5. The average daily male population declined to 2,125 (-0.2%) in November 2024, while the female daily population was 255, a 3.1% decline below the previous month.
6. The ADP for Locally Sentenced Felons (LSF) was 450 in November 2024. That was higher (+1.3%) than the previous month, and was 2.1% higher than November 2023 when it was 441.
7. State Sentenced Felons (TDOC) had an ADP of 159 in November 2024. That was 3.7% lower than the previous month, but was 10.1% higher than November 2023 when the ADP was 144.
8. LSF inmates were 18.9% of the ADP, while Pretrial Felons (PTF) made up 51.4% of the ADP in November 2024.
9. Of the Davidson County correctional facilities, CDM averaged 107.4% of capacity, MCC was 101.9%, and DDC was 100.2% of capacity during November 2024.
10. The ADP of 2,381 for all DCSO facilities in November 2024 was 101.3% of the total system capacity of 2,350 beds.
11. There were 1,780 adult physical arrests made in November 2024. That was 9.7% fewer than the previous month, but was 12.4% more arrests than in November 2023.



Disclaimer: All reports and other documents generated by Criminal Justice Planning are based on information drawn from databases owned and maintained by other agencies of state and local government. Therefore, Criminal Justice Planning can not guarantee, or assume responsibility for, the accuracy or completeness of the data or information reflected in any reports or other documents.

## Average Daily Population Summary by Classification

| Month 2024 | Total ADP    |                |                  | Total ADP by Gender |                |                  |            |                |                  |
|------------|--------------|----------------|------------------|---------------------|----------------|------------------|------------|----------------|------------------|
|            | Total        | Monthly Change | Change Since Jan | Male                | Monthly Change | Change Since Jan | Female     | Monthly Change | Change Since Jan |
| Jan        | 2,083        | 3.2%           |                  | 1,865               | 2.9%           |                  | 218        | 5.3%           |                  |
| Feb        | 2,106        | 1.1%           | 1.1%             | 1,872               | 0.4%           | 0.4%             | 234        | 7.2%           | 7.2%             |
| Mar        | 2,105        | 0.0%           | 1.1%             | 1,882               | 0.5%           | 0.9%             | 222        | -4.7%          | 2.1%             |
| Apr        | 2,105        | 0.0%           | 1.1%             | 1,885               | 0.2%           | 1.1%             | 220        | -1.3%          | 0.8%             |
| May        | 2,114        | 0.4%           | 1.5%             | 1,890               | 0.2%           | 1.3%             | 224        | 2.0%           | 2.8%             |
| Jun        | 2,199        | 4.0%           | 5.6%             | 1,966               | 4.0%           | 5.4%             | 233        | 4.1%           | 7.0%             |
| Jul        | 2,291        | 4.2%           | 10.0%            | 2,033               | 3.4%           | 9.0%             | 258        | 10.5%          | 18.3%            |
| Aug        | 2,340        | 2.1%           | 12.3%            | 2,070               | 1.8%           | 11.0%            | 270        | 4.8%           | 24.0%            |
| Sep        | 2,354        | 0.6%           | 13.0%            | 2,097               | 1.3%           | 12.5%            | 257        | -5.0%          | 17.8%            |
| Oct        | 2,393        | 1.7%           | 14.9%            | 2,130               | 1.6%           | 14.2%            | 263        | 2.5%           | 20.7%            |
| Nov        | 2,381        | -0.5%          | 14.3%            | 2,125               | -0.2%          | 14.0%            | 255        | -3.1%          | 17.0%            |
| Dec        |              |                |                  |                     |                |                  |            |                |                  |
| <b>AVG</b> | <b>2,225</b> | <b>1.5%</b>    |                  | <b>1,983</b>        | <b>1.5%</b>    |                  | <b>241</b> | <b>2.0%</b>    |                  |

| Month 2024 | PTF          | Monthly Change | Change Since Jan | PTM        | Monthly Change | Change Since Jan | CM+DUI     | Monthly Change | Change Since Jan |
|------------|--------------|----------------|------------------|------------|----------------|------------------|------------|----------------|------------------|
| Jan        | 1,013        | 3.90%          |                  | 138        | 19.7%          |                  | 127        | -1.5%          |                  |
| Feb        | 1,031        | 1.8%           | 1.8%             | 134        | -3.3%          | -3.3%            | 133        | 4.2%           | 4.2%             |
| Mar        | 1,011        | -1.9%          | -0.2%            | 141        | 5.4%           | 1.9%             | 140        | 5.2%           | 9.6%             |
| Apr        | 1,014        | 0.3%           | 0.0%             | 127        | -9.8%          | -8.1%            | 136        | -2.6%          | 6.8%             |
| May        | 1,016        | 0.2%           | 0.3%             | 139        | 9.6%           | 0.7%             | 140        | 3.0%           | 10.0%            |
| Jun        | 1,073        | 5.6%           | 5.9%             | 150        | 7.4%           | 8.2%             | 134        | -4.0%          | 5.6%             |
| Jul        | 1,135        | 5.9%           | 12.1%            | 156        | 4.4%           | 13.0%            | 151        | 12.4%          | 18.6%            |
| Aug        | 1,166        | 2.7%           | 15.1%            | 164        | 5.0%           | 18.6%            | 163        | 8.0%           | 28.1%            |
| Sep        | 1,195        | 2.5%           | 17.9%            | 168        | 2.6%           | 21.6%            | 138        | -15.5%         | 8.3%             |
| Oct        | 1,221        | 2.2%           | 20.5%            | 166        | -1.1%          | 20.3%            | 150        | 8.8%           | 17.8%            |
| Nov        | 1,223        | 0.1%           | 20.7%            | 151        | -9.0%          | 9.5%             | 156        | 4.2%           | 22.7%            |
| Dec        |              |                |                  |            |                |                  |            |                |                  |
| <b>AVG</b> | <b>1,100</b> | <b>2.10%</b>   |                  | <b>149</b> | <b>2.8%</b>    |                  | <b>143</b> | <b>2.0%</b>    |                  |

|               |   |
|---------------|---|
| <b>ADP</b>    | Average Daily Population                |
| <b>PTF</b>    | Pretrial Felons                         |
| <b>PTM</b>    | Pretrial Misdemeanants                  |
| <b>CM+DUI</b> | Convicted Misdemeanants including DUI's |

Notes:

\*Classification and gender subtotals may not sum to the monthly total due to rounding.

Source: DCSO Penjail data representing the 11:00 pm facility count.

## Average Daily Population Summary by Classification

| Month 2024 | LSF        | Monthly Change | Change Since Jan | PVF        | Monthly Change | Change Since Jan |
|------------|------------|----------------|------------------|------------|----------------|------------------|
| Jan        | 438        | -2.3%          |                  | 160        | 6.4%           |                  |
| Feb        | 439        | 0.3%           | 0.3%             | 159        | 0.0%           | 0.0%             |
| Mar        | 448        | 2.0%           | 2.3%             | 154        | -3.5%          | -3.5%            |
| Apr        | 446        | -0.5%          | 1.9%             | 162        | 5.5%           | 1.8%             |
| May        | 439        | -1.6%          | 0.3%             | 154        | -5.3%          | -3.5%            |
| Jun        | 433        | -1.3%          | -1.0%            | 168        | 9.2%           | 5.4%             |
| Jul        | 419        | -3.3%          | -4.3%            | 190        | 12.9%          | 19.0%            |
| Aug        | 424        | 1.2%           | -3.2%            | 186        | -2.2%          | 16.4%            |
| Sep        | 447        | 5.6%           | 2.2%             | 180        | -2.9%          | 13.0%            |
| Oct        | 444        | -0.6%          | 1.5%             | 199        | 10.3%          | 24.6%            |
| Nov        | 450        | 1.3%           | 2.9%             | 191        | -3.8%          | 19.8%            |
| Dec        |            |                |                  |            |                |                  |
| <b>AVG</b> | <b>439</b> | <b>0.1%</b>    |                  | <b>173</b> | <b>2.4%</b>    |                  |

| Month 2024 | PVM       | Monthly Change | Change Since Jan | OTHER (a) | Monthly Change | Change Since Jan | TDOC (b)   | Monthly Change | Change Since Jan |
|------------|-----------|----------------|------------------|-----------|----------------|------------------|------------|----------------|------------------|
| Jan        | 27        | 10.5%          |                  | 16        | -38.5%         |                  | 164        | 8.8%           |                  |
| Feb        | 32        | 18.3%          | 18.3%            | 17        | 9.5%           | 9.5%             | 160        | -2.2%          | -2.2%            |
| Mar        | 31        | -2.4%          | 15.5%            | 17        | -2.6%          | 6.7%             | 163        | 1.9%           | -0.4%            |
| Apr        | 31        | 0.2%           | 15.7%            | 13        | -22.2%         | -17.0%           | 175        | 7.4%           | 7.0%             |
| May        | 34        | 7.7%           | 24.6%            | 9         | -29.1%         | -41.1%           | 183        | 4.2%           | 11.5%            |
| Jun        | 40        | 18.3%          | 47.4%            | 10        | 2.3%           | -39.8%           | 192        | 4.9%           | 17.0%            |
| Jul        | 46        | 14.3%          | 68.5%            | 10        | 4.5%           | -37.0%           | 184        | -3.9%          | 12.4%            |
| Aug        | 49        | 7.0%           | 80.3%            | 8         | -18.0%         | -48.4%           | 181        | -1.9%          | 10.3%            |
| Sep        | 45        | -9.0%          | 64.0%            | 7         | -10.4%         | -53.8%           | 174        | -3.8%          | 6.1%             |
| Oct        | 40        | -10.5%         | 46.7%            | 8         | 13.0%          | -47.8%           | 165        | -5.2%          | 0.6%             |
| Nov        | 39        | -0.9%          | 45.5%            | 11        | 28.9%          | -32.7%           | 159        | -3.7%          | -3.1%            |
| Dec        |           |                |                  |           |                |                  |            |                |                  |
| <b>AVG</b> | <b>38</b> | <b>4.9%</b>    |                  | <b>12</b> | <b>-5.7%</b>   |                  | <b>173</b> | <b>0.6%</b>    |                  |

|              |   |
|--------------|---|
| <b>LSF</b>   | Locally Sentenced Felons                    |
| <b>PVF</b>   | Probation Violators, Felony                 |
| <b>PVM</b>   | Probation Violators, Misdemeanor            |
| <b>TDOC</b>  | State Sentenced Felons                      |
| <b>OTHER</b> | All other classifications including Federal |

Notes:

\*Classification and gender subtotals may not sum to the monthly total due to rounding.

(a) Other classifications include the following charge classes: CIVCON, FED (including ICE Detainer or Custody holds), GOVERNOR, NONE, NULL.

(b) TDOC classifications include: SPARVIO, STATESPL, STATE. They are State sentenced felons waiting transfer to TN Dept of Correction, State/split felons serving a split sentence of State confinement and probation, and State parole violators.

Source: DCSO Penjail data representing the 11:00 pm facility count.

**Percent of Population by Classification  
Including LSF Inmates**

**THESE TABLES INCLUDE LOCALLY SENTENCED FELONS**

| Month 2024 | ADP          | PTF          | PTM         | CM/DUI      | LSF          | PVF         | PVM         | OTHER (a)   | TDOC (b)    |
|------------|--------------|--------------|-------------|-------------|--------------|-------------|-------------|-------------|-------------|
| Jan        | 2,083        | 48.6%        | 6.6%        | 6.1%        | 21.0%        | 7.7%        | 1.3%        | 0.8%        | 7.9%        |
| Feb        | 2,106        | 49.0%        | 6.4%        | 6.3%        | 20.9%        | 7.6%        | 1.5%        | 0.8%        | 7.6%        |
| Mar        | 2,105        | 48.0%        | 6.7%        | 6.6%        | 21.3%        | 7.3%        | 1.5%        | 0.8%        | 7.8%        |
| Apr        | 2,105        | 48.2%        | 6.0%        | 6.5%        | 21.2%        | 7.7%        | 1.5%        | 0.6%        | 8.3%        |
| May        | 2,114        | 48.1%        | 6.6%        | 6.6%        | 20.8%        | 7.3%        | 1.6%        | 0.4%        | 8.6%        |
| Jun        | 2,199        | 48.8%        | 6.8%        | 6.1%        | 19.7%        | 7.6%        | 1.8%        | 0.4%        | 8.7%        |
| Jul        | 2,291        | 49.6%        | 6.8%        | 6.6%        | 18.3%        | 8.3%        | 2.0%        | 0.4%        | 8.0%        |
| Aug        | 2,340        | 49.8%        | 7.0%        | 7.0%        | 18.1%        | 7.9%        | 2.1%        | 0.4%        | 7.7%        |
| Sep        | 2,354        | 50.8%        | 7.1%        | 5.9%        | 19.0%        | 7.7%        | 1.9%        | 0.3%        | 7.4%        |
| Oct        | 2,393        | 51.0%        | 7.0%        | 6.3%        | 18.6%        | 8.3%        | 1.7%        | 0.3%        | 6.9%        |
| Nov        | 2,381        | 51.4%        | 6.4%        | 6.6%        | 18.9%        | 8.0%        | 1.7%        | 0.5%        | 6.7%        |
| Dec        |              |              |             |             |              |             |             |             |             |
| <b>AVG</b> | <b>2,225</b> | <b>49.4%</b> | <b>6.7%</b> | <b>6.4%</b> | <b>19.8%</b> | <b>7.8%</b> | <b>1.7%</b> | <b>0.5%</b> | <b>7.8%</b> |

| Month 2024 | ADP   | Percent Change |           |
|------------|-------|----------------|-----------|
|            |       | Monthly        | Since Jan |
| Jan        | 2,083 | 0.0%           |           |
| Feb        | 2,106 | 1.1%           | 1.1%      |
| Mar        | 2,105 | 0.0%           | 1.1%      |
| Apr        | 2,105 | 0.0%           | 1.1%      |
| May        | 2,114 | 0.4%           | 1.5%      |
| Jun        | 2,199 | 4.0%           | 5.6%      |
| Jul        | 2,291 | 4.2%           | 10.0%     |
| Aug        | 2,340 | 2.1%           | 12.3%     |
| Sep        | 2,354 | 0.6%           | 13.0%     |
| Oct        | 2,393 | 1.7%           | 14.9%     |
| Nov        | 2,381 | -0.5%          | 14.3%     |
| Dec        |       |                |           |

Notes:

(a) Other classifications include the following charge classes: CIVCON, FED (including ICE Detainer or Custody holds), GOVERNOR, NONE, NULL. Detainer or Custody Holds).

(b) TDOC classifications include: SPARVIO, STATESPL, STATE. They are State sentenced felons waiting transfer to TN Dept of Correction, State/split felons serving a split sentence of State confinement and probation, and State parole violators.

Source: DCSO Penjail data representing the 11:00 pm facility count.

## Percent of Population by Classification Excluding LSF Inmates

**THESE TABLES EXCLUDE LOCALLY SENTENCED FELONS**

| Month 2024 | ADP          | PTF          | PTM         | CM/DUI      | PVF         | PVM         | OTHER (a)   | TDOC (b)    |
|------------|--------------|--------------|-------------|-------------|-------------|-------------|-------------|-------------|
| Jan        | 1,645        | 61.6%        | 8.4%        | 7.7%        | 9.7%        | 1.6%        | 1.0%        | 10.0%       |
| Feb        | 1,667        | 61.9%        | 8.0%        | 8.0%        | 9.6%        | 1.9%        | 1.0%        | 9.6%        |
| Mar        | 1,657        | 61.0%        | 8.5%        | 8.4%        | 9.3%        | 1.9%        | 1.0%        | 9.9%        |
| Apr        | 1,659        | 61.1%        | 7.7%        | 8.2%        | 9.8%        | 1.9%        | 0.8%        | 10.6%       |
| May        | 1,675        | 60.6%        | 8.3%        | 8.4%        | 9.2%        | 2.0%        | 0.6%        | 10.9%       |
| Jun        | 1,766        | 60.7%        | 8.5%        | 7.6%        | 9.5%        | 2.3%        | 0.5%        | 10.9%       |
| Jul        | 1,872        | 60.6%        | 8.3%        | 8.1%        | 10.1%       | 2.4%        | 0.5%        | 9.8%        |
| Aug        | 1,916        | 60.8%        | 8.6%        | 8.5%        | 9.7%        | 2.6%        | 0.4%        | 9.4%        |
| Sep        | 1,907        | 62.7%        | 8.8%        | 7.2%        | 9.5%        | 2.3%        | 0.4%        | 9.1%        |
| Oct        | 1,949        | 62.6%        | 8.5%        | 7.7%        | 10.2%       | 2.0%        | 0.4%        | 8.5%        |
| Nov        | 1,930        | 63.3%        | 7.8%        | 8.1%        | 9.9%        | 2.0%        | 0.6%        | 8.2%        |
| Dec        |              |              |             |             |             |             |             |             |
| <b>AVG</b> | <b>1,786</b> | <b>61.5%</b> | <b>8.3%</b> | <b>8.0%</b> | <b>9.7%</b> | <b>2.1%</b> | <b>0.7%</b> | <b>9.7%</b> |

| Month 2024 | ADP   | Percent Change |           |
|------------|-------|----------------|-----------|
|            |       | Monthly        | Since Jan |
| Jan        | 1,645 | 3.7%           |           |
| Feb        | 1,667 | 1.3%           | 1.3%      |
| Mar        | 1,657 | -0.6%          | 0.7%      |
| Apr        | 1,659 | 0.1%           | 0.9%      |
| May        | 1,675 | 1.0%           | 1.8%      |
| Jun        | 1,766 | 5.4%           | 7.3%      |
| Jul        | 1,872 | 6.0%           | 13.8%     |
| Aug        | 1,916 | 2.3%           | 16.5%     |
| Sep        | 1,907 | -0.5%          | 15.9%     |
| Oct        | 1,949 | 2.2%           | 18.5%     |
| Nov        | 1,930 | -1.0%          | 17.3%     |
| Dec        |       |                |           |

Notes:

(a) Other classifications include the following charge classes: CIVCON, FED (including ICE Detainer or Custody holds), GOVERNOR, NONE, NULL. Detainer or Custody Holds).

(b) TDOC classifications include: SPARVIO, STATESPL, STATE. They are State sentenced felons waiting transfer to TN Dept of Correction, State/split felons serving a split sentence of State confinement and probation, and State parole violators.

Source: DCSO Penjail data representing the 11:00 pm facility count.

**Percent Change in the Average Daily Population from Current Year to Previous Year**

| Month                              | ADP          |              |              | PTF        |              |              | PTM        |            |              |
|------------------------------------|--------------|--------------|--------------|------------|--------------|--------------|------------|------------|--------------|
|                                    | 2023         | 2024         | % Change     | 2023       | 2024         | % Change     | 2023       | 2024       | % Change     |
| Jan                                | 1,838        | 2,083        | 13.3%        | 917        | 1,013        | 10.5%        | 116        | 138        | 19.0%        |
| Feb                                | 1,846        | 2,106        | 14.1%        | 900        | 1,031        | 14.5%        | 109        | 134        | 22.8%        |
| Mar                                | 1,941        | 2,105        | 8.4%         | 922        | 1,011        | 9.6%         | 133        | 141        | 6.0%         |
| Apr                                | 1,965        | 2,105        | 7.1%         | 940        | 1,014        | 7.8%         | 139        | 127        | -8.6%        |
| May                                | 1,937        | 2,114        | 9.1%         | 924        | 1,016        | 9.9%         | 139        | 139        | 0.2%         |
| Jun                                | 1,953        | 2,199        | 12.6%        | 939        | 1,073        | 14.2%        | 133        | 150        | 12.4%        |
| Jul                                | 1,987        | 2,291        | 15.3%        | 958        | 1,135        | 18.5%        | 140        | 156        | 11.6%        |
| Aug                                | 2,064        | 2,340        | 13.3%        | 996        | 1,166        | 17.0%        | 140        | 164        | 17.4%        |
| Sep                                | 2,041        | 2,354        | 15.3%        | 969        | 1,195        | 23.4%        | 134        | 168        | 25.2%        |
| Oct                                | 2,048        | 2,393        | 16.8%        | 980        | 1,221        | 24.6%        | 126        | 166        | 32.1%        |
| Nov                                | 2,086        | 2,381        | 14.1%        | 1,010      | 1,223        | 21.1%        | 122        | 151        | 23.9%        |
| Dec                                | 2,019        |              |              | 975        |              |              | 116        |            |              |
| <b>Avg</b>                         | <b>1,977</b> | <b>2,225</b> | <b>12.7%</b> | <b>953</b> | <b>1,100</b> | <b>15.5%</b> | <b>129</b> | <b>149</b> | <b>14.7%</b> |
| <b>% Change Curr Yr to Prev Yr</b> |              |              | <b>12.5%</b> |            |              | <b>15.4%</b> |            |            | <b>15.3%</b> |

| Month                              | CM+DUI     |            |              | LSF        |            |             | PVF        |            |              |
|------------------------------------|------------|------------|--------------|------------|------------|-------------|------------|------------|--------------|
|                                    | 2023       | 2024       | % Change     | 2023       | 2024       | % Change    | 2023       | 2024       | % Change     |
| Jan                                | 119        | 127        | 7.3%         | 378        | 438        | 15.9%       | 120        | 160        | 32.6%        |
| Feb                                | 113        | 133        | 17.3%        | 389        | 439        | 12.9%       | 143        | 159        | 11.8%        |
| Mar                                | 111        | 140        | 25.6%        | 394        | 448        | 13.5%       | 153        | 154        | 0.8%         |
| Apr                                | 111        | 136        | 22.4%        | 393        | 446        | 13.5%       | 158        | 162        | 2.9%         |
| May                                | 115        | 140        | 21.9%        | 391        | 439        | 12.1%       | 149        | 154        | 3.3%         |
| Jun                                | 123        | 134        | 9.2%         | 388        | 433        | 11.7%       | 161        | 168        | 4.7%         |
| Jul                                | 132        | 151        | 14.7%        | 393        | 419        | 6.6%        | 162        | 190        | 17.4%        |
| Aug                                | 140        | 163        | 16.4%        | 391        | 424        | 8.2%        | 181        | 186        | 2.4%         |
| Sep                                | 141        | 138        | -2.1%        | 417        | 447        | 7.2%        | 157        | 180        | 14.9%        |
| Oct                                | 144        | 150        | 4.2%         | 432        | 444        | 2.8%        | 140        | 199        | 42.0%        |
| Nov                                | 143        | 156        | 9.4%         | 441        | 450        | 2.1%        | 144        | 191        | 32.7%        |
| Dec                                | 129        |            |              | 448        |            |             | 150        |            |              |
| <b>Avg</b>                         | <b>127</b> | <b>143</b> | <b>13.3%</b> | <b>405</b> | <b>439</b> | <b>9.7%</b> | <b>151</b> | <b>173</b> | <b>15.1%</b> |
| <b>% Change Curr Yr to Prev Yr</b> |            |            | <b>12.5%</b> |            |            | <b>8.4%</b> |            |            | <b>14.3%</b> |

| Month                              | PVM       |           |              | Other (a) |           |               | TDOC (b)   |            |              |
|------------------------------------|-----------|-----------|--------------|-----------|-----------|---------------|------------|------------|--------------|
|                                    | 2023      | 2024      | % Change     | 2023      | 2024      | % Change      | 2023       | 2024       | % Change     |
| Jan                                | 24        | 27        | 12.0%        | 82        | 16        | -80.6%        | 82         | 164        | 98.9%        |
| Feb                                | 21        | 32        | 54.5%        | 89        | 17        | -80.4%        | 82         | 160        | 95.5%        |
| Mar                                | 26        | 31        | 22.8%        | 103       | 17        | -83.4%        | 100        | 163        | 63.7%        |
| Apr                                | 31        | 31        | 2.8%         | 98        | 13        | -86.6%        | 95         | 175        | 85.4%        |
| May                                | 33        | 34        | 3.7%         | 92        | 9         | -89.7%        | 94         | 183        | 93.5%        |
| Jun                                | 30        | 40        | 34.3%        | 75        | 10        | -87.3%        | 98         | 192        | 95.5%        |
| Jul                                | 27        | 46        | 71.3%        | 72        | 10        | -86.1%        | 104        | 184        | 77.9%        |
| Aug                                | 33        | 49        | 49.5%        | 65        | 8         | -87.4%        | 118        | 181        | 53.8%        |
| Sep                                | 28        | 45        | 60.6%        | 62        | 7         | -88.1%        | 134        | 174        | 30.2%        |
| Oct                                | 22        | 40        | 77.3%        | 57        | 8         | -85.4%        | 147        | 165        | 12.5%        |
| Nov                                | 28        | 39        | 43.2%        | 54        | 11        | -80.3%        | 144        | 159        | 10.1%        |
| Dec                                | 25        |           |              | 26        |           |               | 151        |            |              |
| <b>Avg</b>                         | <b>27</b> | <b>38</b> | <b>39.3%</b> | <b>73</b> | <b>12</b> | <b>-85.0%</b> | <b>112</b> | <b>173</b> | <b>65.2%</b> |
| <b>% Change Curr Yr to Prev Yr</b> |           |           | <b>39.0%</b> |           |           | <b>-84.1%</b> |            |            | <b>53.8%</b> |

|        |   |     |                                  |
|--------|---|-----|----------------------------------|
| ADP    | Average Daily Population                    |     |                                  |
| PTF    | Pretrial Felons                             | PTM | Pretrial Misdemeanants           |
| CM+DUI | Convicted Misdemeanants including DUI's     | LSF | Locally Sentenced Felons         |
| PVF    | Probation Violators, Felony                 | PVM | Probation Violators, Misdemeanor |
| TDOC   | State Sentenced Felons                      |     |                                  |
| OTHER  | All other classifications including Federal |     |                                  |

**Notes:**

(a) Other classifications include the following charge classes: CIVCON, FED (including ICE Detainer or Custody holds), GOVERNOR, NONE, NULL. Detainer or Custody Holds).

(b) TDOC classifications include: SPARVIO, STATESPL, STATE. They are State sentenced felons waiting transfer to TN Dept of Correction, State/split felons serving a split sentence of State confinement and probation, and State parole violators.

Source: DCSO Penjail data representing the 11:00 pm facility count.

**Average Daily Population By Facility - Detail**

| 2024 Month | DDC - Downtown Detention Center (formerly CJC)  |                                    |                          | CDM - Correctional Development Center Male |                                    |                          | CDF - Correctional Development Center Female |                                    |                          |                                |
|------------|---|------------------------------------|--------------------------|--|------------------------------------|--------------------------|--|------------------------------------|--------------------------|--------------------------------|
|            | Capacity - 762 (a)                              |                                    |                          | Capacity - 768 (f)                         |                                    |                          | Capacity - 252 (as of 12/7/2020) (b)         |                                    |                          |                                |
|            | ADP (Includes the Gym and Excludes Processing*) | Percent Change from Previous Month | Average Percent Capacity | ADP  | Percent Change from Previous Month | Average Percent Capacity | ADP  | Percent Change from Previous Month | Average Percent Capacity | Temporary Covid 19 Males ADP** |
| Jan        | 659   | 13.0%                              | 86.5%                    | 739  | 23.4%                              | 96.2%                    | 212  | 25.0%                              | 83.9%                    |                                |
| Feb        | 657   | -0.4%                              | 86.2%                    | 752  | 1.7%                               | 97.9%                    | 224  | 6.0%                               | 89.0%                    |                                |
| Mar        | 662   | 0.8%                               | 86.8%                    | 756  | 0.5%                               | 98.4%                    | 217  | -3.3%                              | 86.1%                    |                                |
| Apr        | 663   | 0.2%                               | 87.0%                    | 753  | -0.3%                              | 98.1%                    | 214  | -1.1%                              | 85.1%                    |                                |
| May        | 658   | -0.8%                              | 86.4%                    | 767  | 1.8%                               | 99.8%                    | 218  | 1.6%                               | 86.4%                    |                                |
| Jun        | 688   | 4.5%                               | 90.3%                    | 797  | 3.9%                               | 103.8%                   | 223  | 2.5%                               | 88.6%                    |                                |
| Jul        | 700   | 1.7%                               | 91.9%                    | 815  | 2.3%                               | 106.1%                   | 249  | 11.7%                              | 98.9%                    |                                |
| Aug        | 722   | 3.1%                               | 94.7%                    | 817  | 0.2%                               | 106.4%                   | 260  | 4.3%                               | 103.1%                   |                                |
| Sep        | 743   | 3.0%                               | 97.6%                    | 822  | 0.6%                               | 107.0%                   | 253  | -2.7%                              | 100.3%                   |                                |
| Oct        | 764   | 2.7%                               | 100.2%                   | 835  | 1.6%                               | 108.8%                   | 255  | 0.8%                               | 101.1%                   |                                |
| Nov        | 764   | 0.0%                               | 100.2%                   | 825  | -1.2%                              | 107.4%                   | 249  | -2.2%                              | 98.9%                    |                                |
| Dec        |   |                                    |                          |  |                                    |                          |  |                                    |                          |                                |
| YTD AVG    | 698   | 2.5%                               | 91.6%                    | 789  | 3.1%                               | 102.7%                   | 234  | 3.9%                               | 92.9%                    |                                |

\*Processing includes all inmates in custody who have not been assigned a bed.

\*\*Males who tested positive for COVID19 temporarily housed in CDCF.

| 2024 Month | HDC - Hill Detention Center     |                                    |                          | ORC - Offender Re-Entry Center |                                    |                          | BCC - Behavioral Care Center |            |           |                                    |                          |
|------------|---------------------------------|------------------------------------|--------------------------|--------------------------------|------------------------------------|--------------------------|------------------------------|------------|-----------|------------------------------------|--------------------------|
|            | Capacity - 0 (as of 5/6/20) (e) |                                    |                          | Capacity - 0 (g)               |                                    |                          | Capacity - 60 (h)            |            |           |                                    |                          |
|            | ADP                             | Percent Change from Previous Month | Average Percent Capacity | ADP                            | Percent Change from Previous Month | Average Percent Capacity | Male ADP                     | Female ADP | Total ADP | Percent Change from Previous Month | Average Percent Capacity |
| Jan        | 0                               | 0.0%                               |                          | 0                              | 0.0%                               |                          | 6                            | 6          | 13        | -25.4%                             | 21.5%                    |
| Feb        | 0                               | 0.0%                               |                          | 0                              | 0.0%                               |                          | 7                            | 9          | 17        | 29.3%                              | 27.8%                    |
| Mar        | 0                               | 0.0%                               |                          | 0                              | 0.0%                               |                          | 13                           | 6          | 18        | 9.8%                               | 30.5%                    |
| Apr        | 0                               | 0.0%                               |                          | 0                              | 0.0%                               |                          | 13                           | 5          | 18        | -0.9%                              | 30.3%                    |
| May        | 0                               | 0.0%                               |                          | 0                              | 0.0%                               |                          | 11                           | 6          | 17        | -6.4%                              | 28.3%                    |
| Jun        | 0                               | 0.0%                               |                          | 0                              | 0.0%                               |                          | 17                           | 10         | 27        | 56.9%                              | 44.4%                    |
| Jul        | 0                               | 0.0%                               |                          | 0                              | 0.0%                               |                          | 8                            | 9          | 17        | -36.9%                             | 28.1%                    |
| Aug        | 0                               | 0.0%                               |                          | 0                              | 0.0%                               |                          | 19                           | 10         | 29        | 72.8%                              | 48.5%                    |
| Sep        | 0                               | 0.0%                               |                          | 0                              | 0.0%                               |                          | 13                           | 4          | 17        | -40.1%                             | 29.1%                    |
| Oct        | 0                               | 0.0%                               |                          | 0                              | 0.0%                               |                          | 14                           | 8          | 23        | 29.7%                              | 37.7%                    |
| Nov        | 0                               | 0.0%                               |                          | 0                              | 0.0%                               |                          | 19                           | 6          | 25        | 10.9%                              | 41.8%                    |
| Dec        |                                 |                                    |                          |                                |                                    |                          |                              |            |           |                                    |                          |
| YTD AVG    | 0                               | 0.0%                               |                          | 0                              | 0.0%                               |                          | 13                           | 7          | 20        | 9.1%                               | 33.5%                    |

| 2024 Month | MCC - Maximum Correctional Center    |            |           |                                    |                          | MDF - Metro Davidson County Detention Facility |            |           |                                    |                          |
|------------|--------------------------------------|------------|-----------|------------------------------------|--------------------------|--|------------|-----------|------------------------------------|--------------------------|
|            | Capacity - 508 (as of 12/7/2020) (b) |            |           |                                    |                          | Capacity - 0 (as of 12/7/2020) (c)             |            |           |                                    |                          |
|            | Male ADP                             | Female ADP | Total ADP | Percent Change from Previous Month | Average Percent Capacity | Male ADP*                                      | Female ADP | Total ADP | Percent Change from Previous Month | Average Percent Capacity |
| Jan        | 460                                  | 0          | 460       | 8.8%                               | 90.6%                    | 0  | 0          | 0         | 0.0%                               | 0.0%                     |
| Feb        | 457                                  | 0          | 457       | -0.8%                              | 89.9%                    | 0  | 0          | 0         | 0.0%                               | 0.0%                     |
| Mar        | 452                                  | 0          | 452       | -0.9%                              | 89.0%                    | 0  | 0          | 0         | 0.0%                               | 0.0%                     |
| Apr        | 456                                  | 0          | 456       | 0.8%                               | 89.8%                    | 0  | 0          | 0         | 0.0%                               | 0.0%                     |
| May        | 454                                  | 0          | 454       | -0.4%                              | 89.4%                    | 0  | 0          | 0         | 0.0%                               | 0.0%                     |
| Jun        | 465                                  | 0          | 465       | 2.3%                               | 91.5%                    | 0  | 0          | 0         | 0.0%                               | 0.0%                     |
| Jul        | 510                                  | 0          | 510       | 9.8%                               | 100.4%                   | 0  | 0          | 0         | 0.0%                               | 0.0%                     |
| Aug        | 512                                  | 0          | 512       | 0.4%                               | 100.9%                   | 0  | 0          | 0         | 0.0%                               | 0.0%                     |
| Sep        | 518                                  | 0          | 518       | 1.2%                               | 102.0%                   | 0  | 0          | 0         | 0.0%                               | 0.0%                     |
| Oct        | 517                                  | 0          | 517       | -0.3%                              | 101.7%                   | 0  | 0          | 0         | 0.0%                               | 0.0%                     |
| Nov        | 518                                  | 0          | 518       | 0.2%                               | 101.9%                   | 0  | 0          | 0         | 0.0%                               | 0.0%                     |
| Dec        |                                      |            |           |                                    |                          |  |            |           |                                    |                          |
| YTD AVG    | 484                                  | 0          | 484       | 1.9%                               | 95.2%                    | 0  | 0          | 0         | 0.0%                               | 0.0%                     |

\*Inmates are occasionally temporarily housed in MDF due to issues in other facilities (environmental, quarantine, etc).

\*Facility notes are found on page 8.

## Average Daily Population By Facility - Summary

| Total All Facilities                 |              |                                    |                          |                 |
|--------------------------------------|--------------|------------------------------------|--------------------------|-----------------|
| Capacity - 2,350 (as of 12/7/20) (d) |              |                                    |                          |                 |
| 2024 Month                           | ADP          | Percent Change from Previous Month | Average Percent Capacity | System Capacity |
| Jan                                  | 2,083        | 3.1%                               | 88.6%                    | 2,350           |
| Feb                                  | 2,106        | 1.1%                               | 89.6%                    | 2,350           |
| Mar                                  | 2,105        | 0.0%                               | 89.6%                    | 2,350           |
| Apr                                  | 2,105        | 0.0%                               | 89.6%                    | 2,350           |
| May                                  | 2,114        | 0.4%                               | 89.9%                    | 2,350           |
| Jun                                  | 2,199        | 4.0%                               | 93.6%                    | 2,350           |
| Jul                                  | 2,291        | 4.2%                               | 97.5%                    | 2,350           |
| Aug                                  | 2,340        | 2.1%                               | 99.6%                    | 2,350           |
| Sep                                  | 2,354        | 0.6%                               | 100.2%                   | 2,350           |
| Oct                                  | 2,393        | 1.7%                               | 101.8%                   | 2,350           |
| Nov                                  | 2,381        | -0.5%                              | 101.3%                   | 2,350           |
| Dec                                  |              |                                    |                          | 2,350           |
| <b>YTD AVG</b>                       | <b>2,225</b> | <b>1.5%</b>                        | <b>94.7%</b>             |                 |

| Total DCSO Facilities            |              |                                    |                          |                 |
|----------------------------------|--------------|------------------------------------|--------------------------|-----------------|
| Capacity - 2,350 (as of 12/7/20) |              |                                    |                          |                 |
| 2024 Month                       | ADP          | Percent Change from Previous Month | Average Percent Capacity | System Capacity |
| Jan                              | 2,083        | 3.1%                               | 88.6%                    | 2,350           |
| Feb                              | 2,106        | 1.1%                               | 89.6%                    | 2,350           |
| Mar                              | 2,105        | 0.0%                               | 89.6%                    | 2,350           |
| Apr                              | 2,105        | 0.0%                               | 89.6%                    | 2,350           |
| May                              | 2,114        | 0.4%                               | 89.9%                    | 2,350           |
| Jun                              | 2,199        | 4.0%                               | 93.6%                    | 2,350           |
| Jul                              | 2,291        | 4.2%                               | 97.5%                    | 2,350           |
| Aug                              | 2,340        | 2.1%                               | 99.6%                    | 2,350           |
| Sep                              | 2,354        | 0.6%                               | 100.2%                   | 2,350           |
| Oct                              | 2,393        | 1.7%                               | 101.8%                   | 2,350           |
| Nov                              | 2,381        | -0.5%                              | 101.3%                   | 2,350           |
| Dec                              |              |                                    |                          | 2,350           |
| <b>YTD AVG</b>                   | <b>2,225</b> | <b>1.5%</b>                        | <b>94.7%</b>             |                 |

| Last Date Facility was Below 100% Capacity* |           |  |
|---|-----------|--|
| Facility                                    | Last Date | Current Consecutive Days in 2024 Over Capacity |
| DDC   | 11/30/24  | 0  |
| CDM   | 5/25/24   | 189  |
| CDF   | 11/20/24  | 10   |
| HDC   | 11/30/24  | 0  |
| ORC   | 11/30/24  | 0  |
| BCC   | 11/30/24  | 0  |
| MCC   | 11/27/24  | 3  |
| MDF   | 11/30/24  | 0  |

\*Between Jan 1 and December 31, 2024.

**Notes:**

- (a) Capacity at CJC increased to 807 from 705 in October 2007 through recertification. Capacity decreased to 800 in November 2012 and again to 788 in August 2013. CJC closed for renovation 8/13/16. On 4/16/2020 it began housing inmates and was renamed DDC; new capacity is 762.
- (b) CDF opened in March 2006 when all female inmates were moved there from MDF. In May 2016 all females were moved out of CDF and into MDF; then in August 2016 CDF reopened as MCC (Maximum Correctional Center) and began housing male inmates as a result of renovations at CJC. The capacity at MCC remained at 508. In May 2020, MCC was renamed back to CDF and females were moved from MDF to CDF. Starting 6/25/2020, males testing positive for COVID19 were temporarily housed at CDF. Starting December 2020 due to the temporary closing of MDF, females were housed at CDF (capacity 252), males were housed at MCC (capacity 508).
- (c) Capacity for MDF increased to 1,092 from 892 on 11/1/2005 through recertification. It increased to 1,348 in June 2011. Locally sentenced felon females were moved there in July 2011. In May 2016 all female inmates were moved to MDF because of renovations at CJC. In May 2020, females were moved out of MDF back to CDF. In December 2020, inmates were moved out of MDF into MCC and the facility was temporarily closed by 12/7/2020. Starting Feb 2021, MDF was sometimes used to temporarily house inmates moved from other facilities due to environmental reasons; system capacity remained the same.
- (d) Total capacity for all facilities increased from 3,679 to 3,781 in October 2007; from 3,781 to 3,842 in December 2007; from 3,842 to 4,010 in February 2008, from 4,010 to 4,266 in June 2011. It decreased to 4,259 in November 2012, and again to 4,247 in August 2013. With the temporary closing of CJC in August 2016 due to renovations, the capacity became 3,459. In April 2019, ORC closed so the capacity decreased to 3,159. CJC reopened as DDC in April 2020, resulting in a new capacity of 3,921. In May 2020 the HDC closed, resulting in a capacity of 3,386. The capacity increased to 3,446 on 9/14/2020 with the opening of BCC. On 12/7/2020, system capacity decreased to 2,350 with the temporary closing of MDF and resulting changes to MCC and CDF.
- (e) Total capacity for HDC increased from 474 to 535 in December 2007. Booking functions were moved to HDC in August 2016 due to renovations at CJC, but the capacity remained at 535. HDC was closed on 5/6/2020 and all inmates were moved to DDC.
- (f) Total capacity for CDM increased from 600 to 768 in February 2008.
- (g) ORC temporarily closed in January 2011. It reopened in May 2016 to house inmates due to renovations at CJC; capacity was 300. ORC was closed on 4/7/2019.
- (h) BCC opened on 9/14/2020 with a capacity of 60, comprised of 30 males and 30 females.



## Adult Physical Arrests

| MONTH            | 2023          | 2024          | % Change                        |                          |                    |
|------------------|---------------|---------------|---------------------------------|--------------------------|--------------------|
|                  |               |               | Previous Month to Current Month | 2023 Month to 2024 Month | Since January 2024 |
| Jan              | 1,455         | 1,567         | 1.5%                            | 7.7%                     |                    |
| Feb              | 1,540         | 1,738         | 10.9%                           | 12.9%                    | 10.9%              |
| Mar              | 1,789         | 1,882         | 8.3%                            | 5.2%                     | 20.1%              |
| Apr              | 1,518         | 1,847         | -1.9%                           | 21.7%                    | 17.9%              |
| May              | 1,732         | 2,020         | 9.4%                            | 16.6%                    | 28.9%              |
| Jun              | 1,639         | 1,909         | -5.5%                           | 16.5%                    | 21.8%              |
| Jul              | 1,775         | 1,964         | 2.9%                            | 10.6%                    | 25.3%              |
| Aug              | 1,772         | 2,015         | 2.6%                            | 13.7%                    | 28.6%              |
| Sep              | 1,604         | 1,858         | -7.8%                           | 15.8%                    | 18.6%              |
| Oct              | 1,636         | 1,972         | 6.1%                            | 20.5%                    | 25.8%              |
| Nov              | 1,583         | 1,780         | -9.7%                           | 12.4%                    | 13.6%              |
| Dec              | 1,544         |               |                                 |                          |                    |
| <b>YTD Total</b> | <b>19,587</b> | <b>20,552</b> | <b>MONTH</b>                    | <b>Avg: 14%</b>          | <b>13.6%</b>       |

| MONTH | 2023 YTD TOTAL | 2024 YTD TOTAL | 2023 YTD to 2024 YTD % Change |
|-------|----------------|----------------|-------------------------------|
| Jan   | 1,455          | 1,567          | 7.7%                          |
| Feb   | 2,995          | 3,305          | 10.4%                         |
| Mar   | 4,784          | 5,187          | 8.4%                          |
| Apr   | 6,302          | 7,034          | 11.6%                         |
| May   | 8,034          | 9,054          | 12.7%                         |
| Jun   | 9,673          | 10,963         | 13.3%                         |
| Jul   | 11,448         | 12,927         | 12.9%                         |
| Aug   | 13,220         | 14,942         | 13.0%                         |
| Sep   | 14,824         | 16,800         | 13.3%                         |
| Oct   | 16,460         | 18,772         | 14.0%                         |
| Nov   | 18,043         | 20,552         | 13.9%                         |
| Dec   | 19,587         |                |                               |

Source: Metropolitan Nashville Police Department, data pulled on 12/17/2024. Adult arrests only. Expungements were removed.

Note: This report includes the number of adult physical arrests made in Davidson County during the time period. A physical arrest is a custodial arrest and represents an individual body and not the number of charges issued to a person. Expungements are removed.