

WHAT WE HEARD



NEIGHBORHOOD ZOOM MEETING

April 11
33 Attendees



NEIGHBORHOOD WORKING GROUP

March 20, April 5, May 10
June 7, July 12, September 6



COMMUNITY VISIONING & LISTENING SESSION

April 30
100 attendees

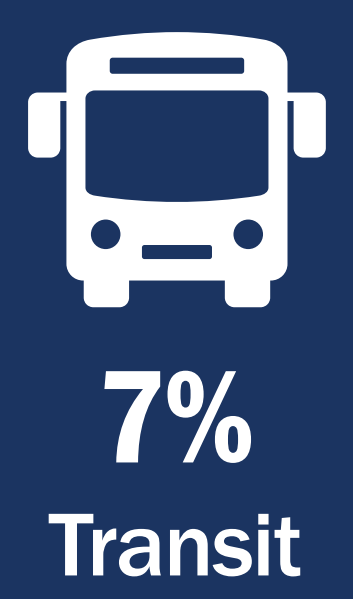
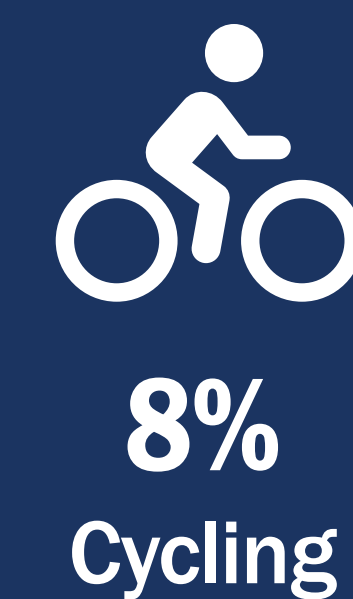
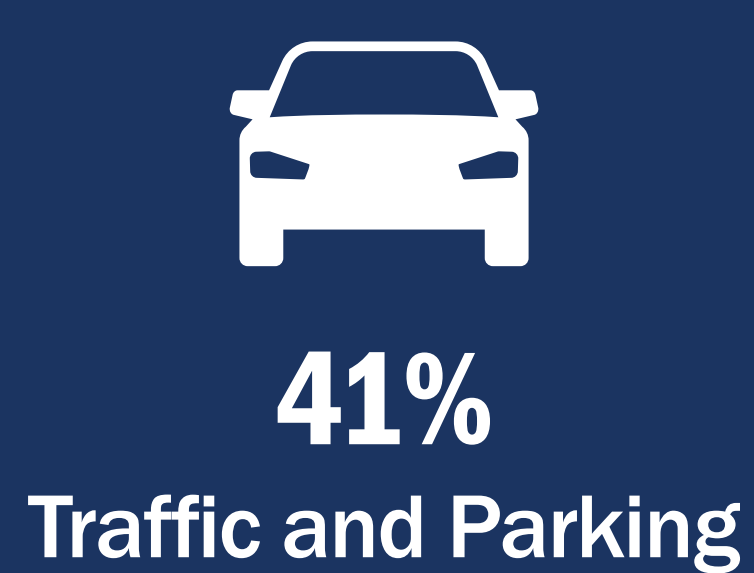


VIRTUAL ENGAGEMENT

May 1 – May 31
90 participants

483 COMMENTS RECEIVED
204 IN PERSON, 279 ONLINE

COMMENTS BY CONCERN



OVERARCHING THEMES

Cut-through Traffic and Access

- About one out of three comments referenced cut-through traffic and/or the need to provide new access to Cheekwood.
- Trucks, buses and other large vehicles on neighborhood streets was a theme of many comments.
- Many comments mentioned Highway 100 as an option.

Safety

- About one out of three comments mentioned speeding and safety concerns on neighborhood streets.
- Many comments stated concerns about walking and cycling safety.
- Heavy focus of comments on Page Rd., Hwy 100, W Tyne Dr.

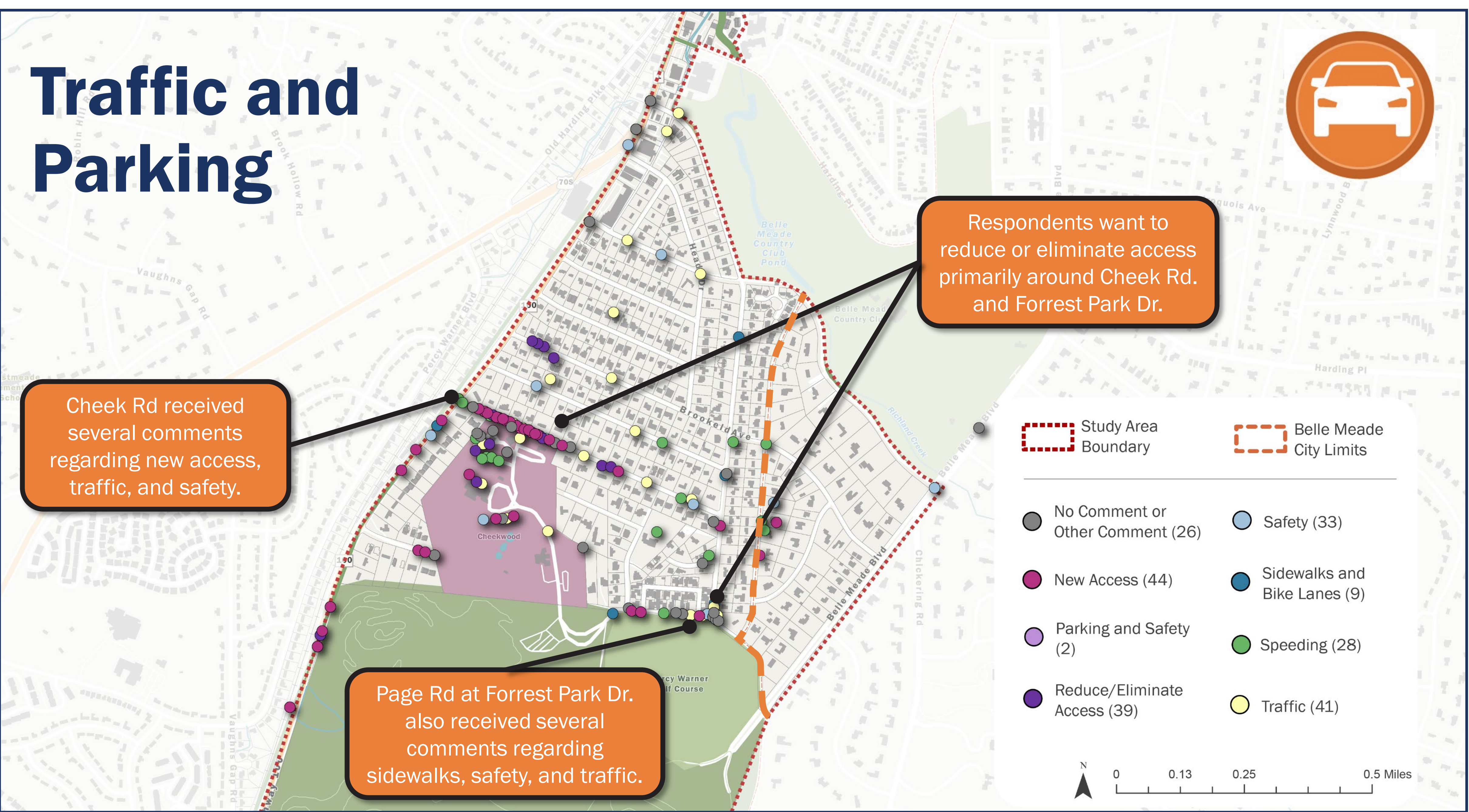
Walkability and Connectivity

- About one out of four comments identified the need for sidewalks and walkable streets and better connectivity to destinations.
- Many comments identified traffic and safety as barriers to walking.
- Transit stops and businesses along Harding Pike were mentioned as desired destinations.



What We Heard: Comment Maps

Traffic and Parking



Most Popular Themes

New Access

- New access from Hwy 100 and away from Cheek Road and Forrest Park Dr.

Traffic

- Speeding concerns focused on Page Road, Nichol Lane, Cheek Road and Forrest Park Drive.

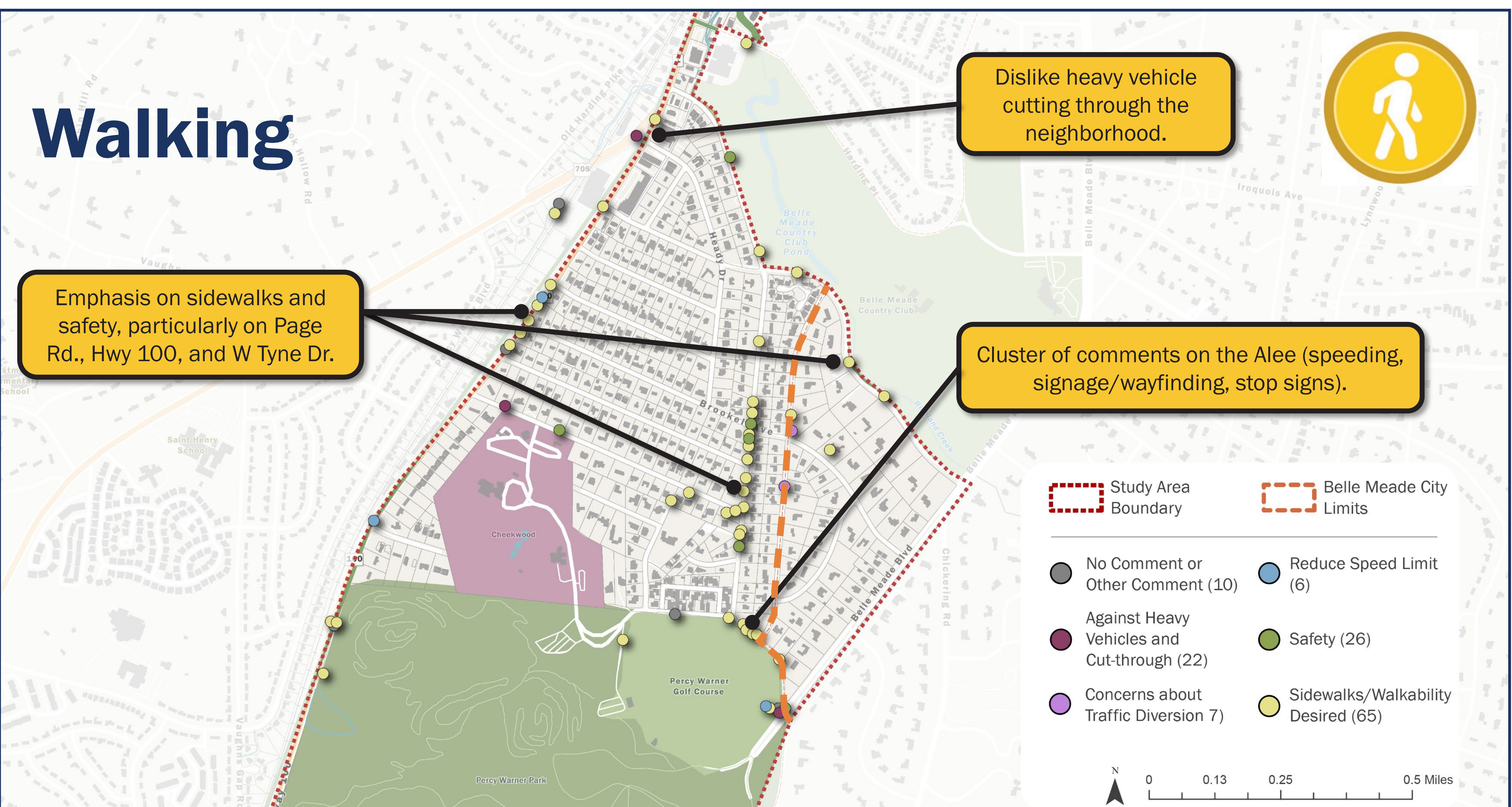
Reduce/Eliminate Access

- Cheek Road and Forrest Park Drive.

Safety

- Street design and multimodal safety (walking and biking).

Walking



Most Popular Themes

Sidewalks/Walkability Desired

- Heavy focus on Page Rd, Hwy 100, W Tyne Dr.

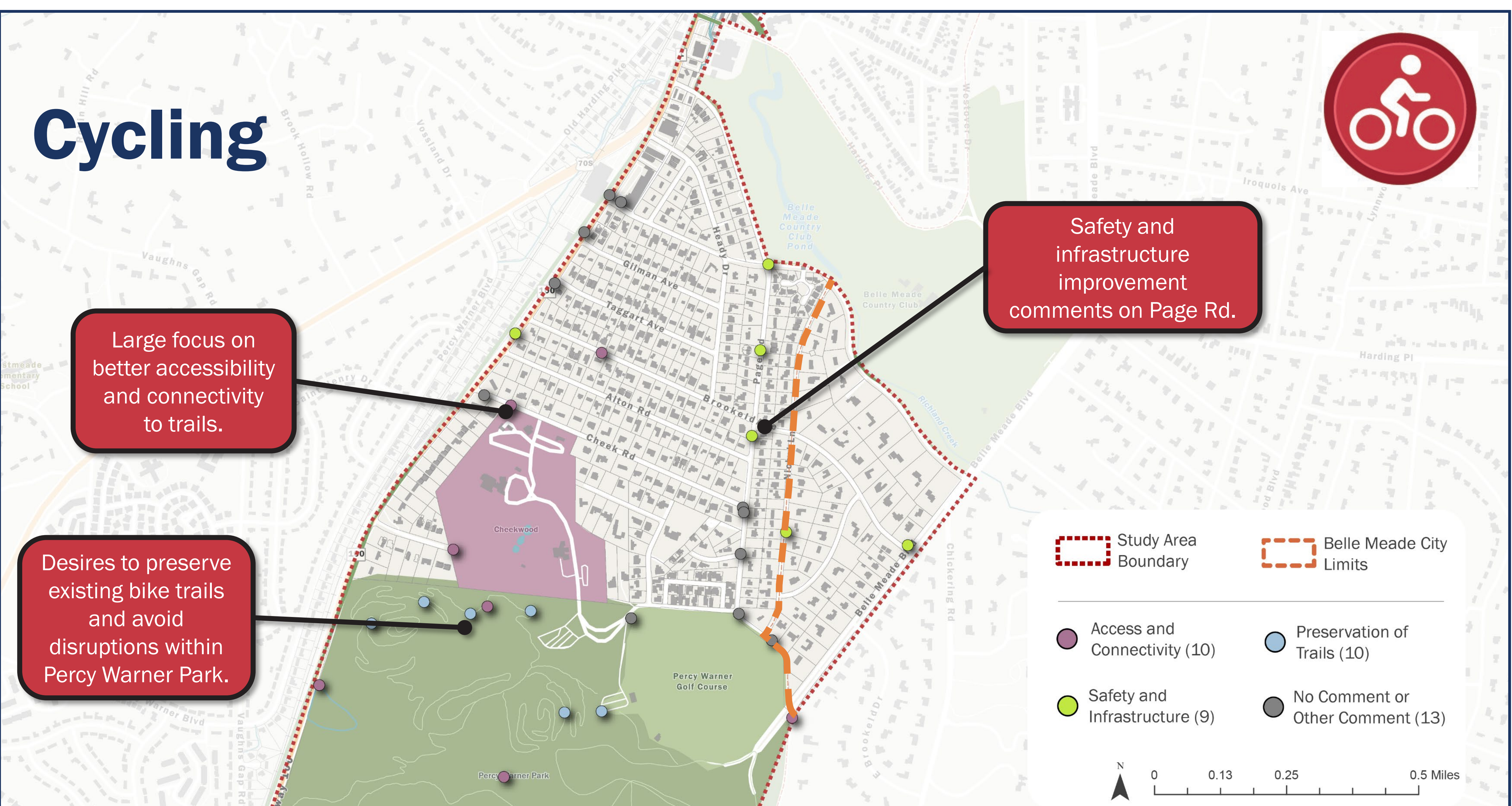
Safety

- Heavy focus on Page Rd, Hwy 100, W Tyne Dr.

Concerns about Traffic Diversion

- Nichol Ln.

Cycling



Most Popular Themes

Access and Connectivity

- Better access to trails and more trails.

Safety and Infrastructure

- Focus on Page Rd.

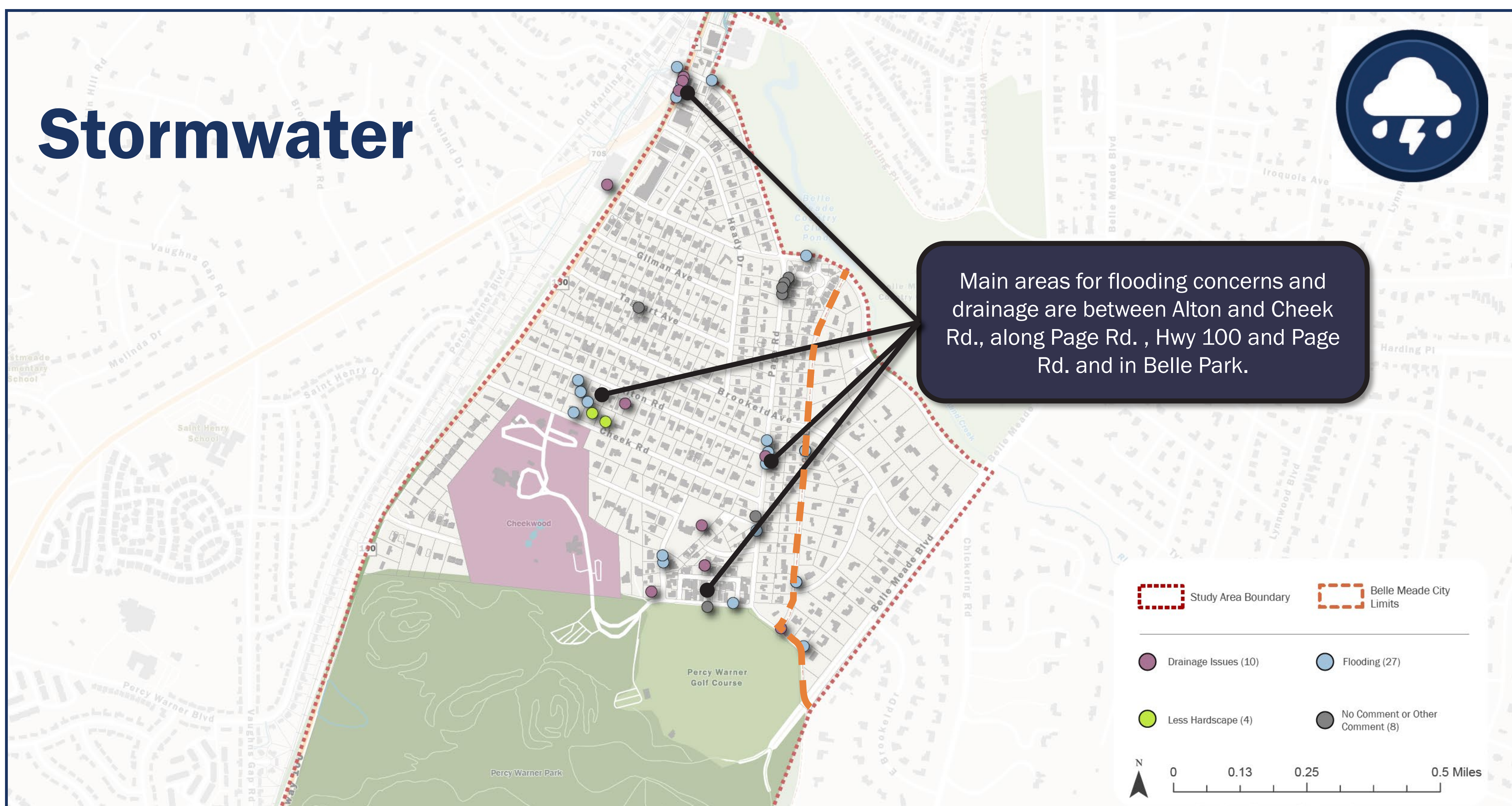
Preservation of Trails

- Don't disrupt existing Percy Warner bike trails.



What We Heard: Comment Maps

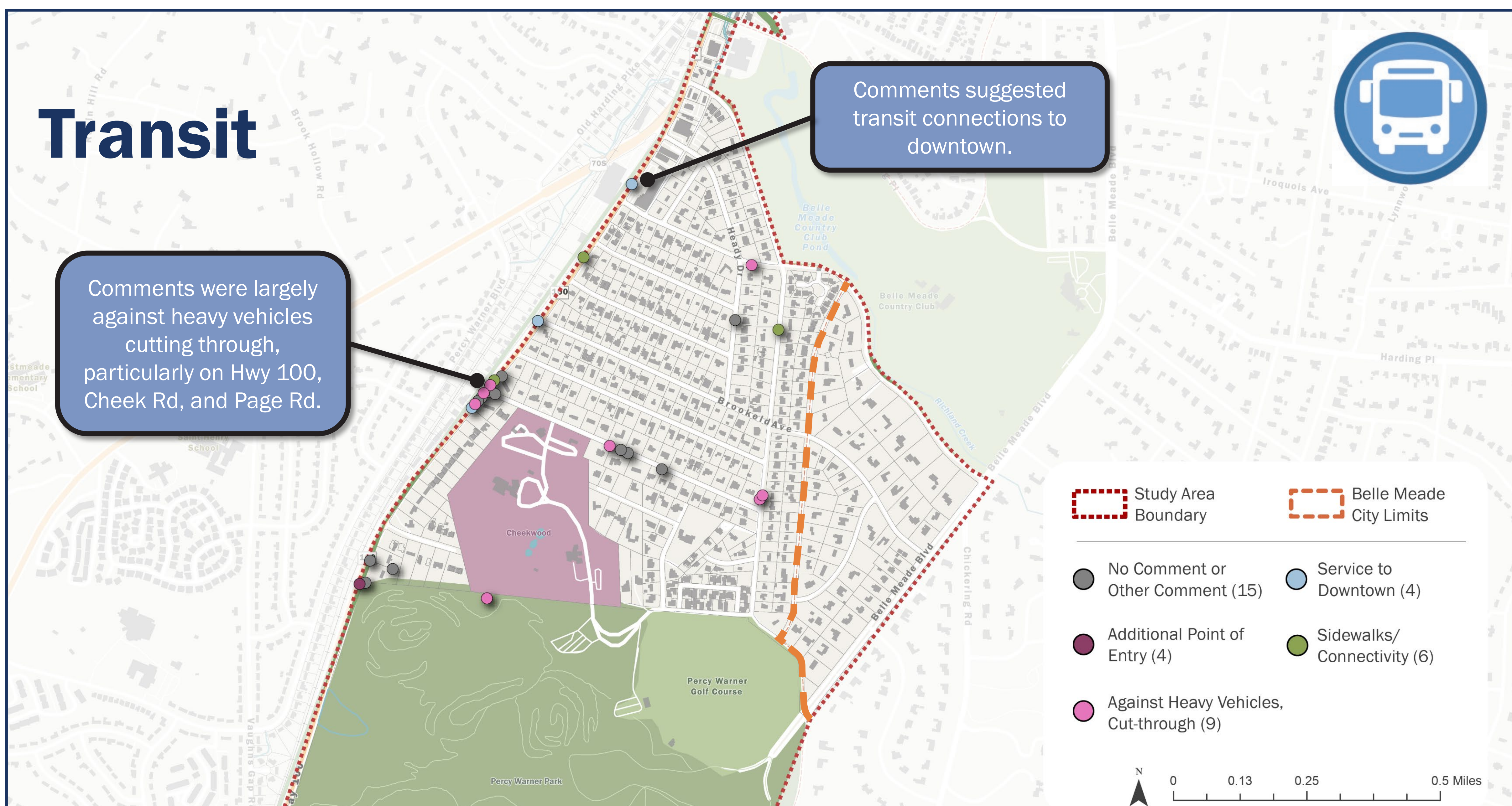
Stormwater



Most Popular Themes

- Flooding
- Drainage Issues
- Less Hardscapes

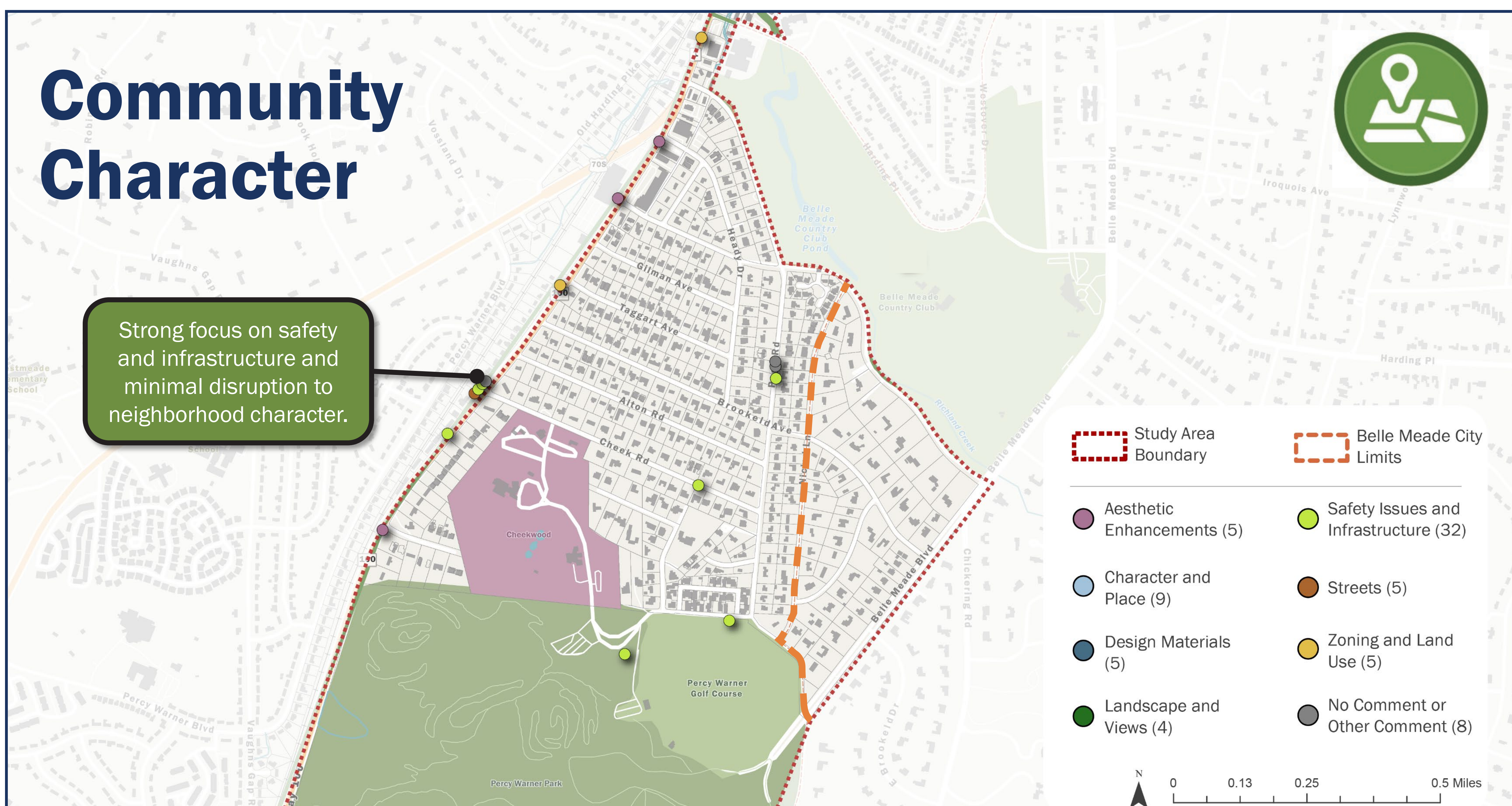
Transit



Most Popular Themes

- Against Heavy Vehicles & Cut-through Traffic
 - Hwy 100/Cheek Rd and Page Rd.
- Sidewalks/Connectivity
 - Better connections to transit stops.
- Service to Downtown
- Additional Point of Entry

Community Character



Most Popular Themes

- Safety and Infrastructure
 - Impacts to neighborhood character
- Character and Place
- Zoning and Land Use
- Aesthetic Enhancements
- Design Materials
- Streets
- Landscapes and Views