

ESTIMATED QUANTITIES

SPEED CUSHIONS

| | |
|--------------------------------------|----|
| 6' X 7' SPEED CUSHION WITH ONE ARROW | 20 |
| 6' X 7' SPEED CUSHION TWO ARROWS | 5 |
| 6' X 7' SPEED CUSHION WITH DSYL | 1 |

SIGNING

| | |
|--|----|
| W17-1 (VAR.) "SPEED CUSHION" SIGN (30" X 30") | 2 |
| W17-1 (VAR.) "SPEED CUSHIONS AHEAD" SIGN (30" X 30") | 10 |

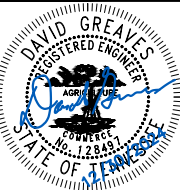
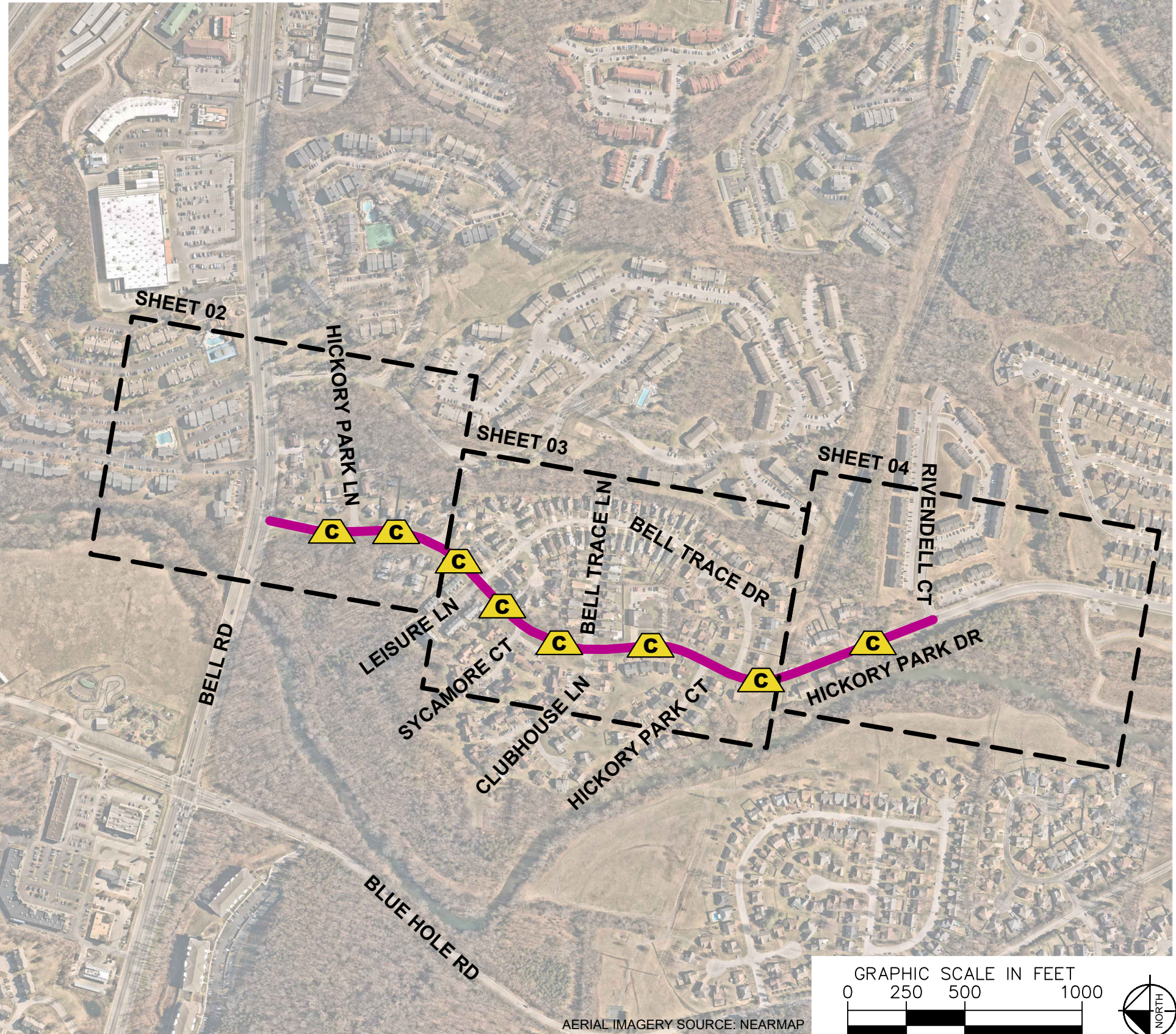
PAVEMENT MARKERS AND DELINEATORS

| | |
|-------------------------|---|
| 4" FLEXIBLE DELINEATORS | 4 |
|-------------------------|---|

NOTE: ALL LOCATIONS ARE REFERENCED FROM CENTERLINE OF DRIVEWAYS OR OTHER LANDMARKS TO THE CENTER OF SPEED CUSHIONS OR SIGNS.

LEGEND

-  LIMITS OF TRAFFIC CALMING PROJECT
-  SPEED CUSHIONS



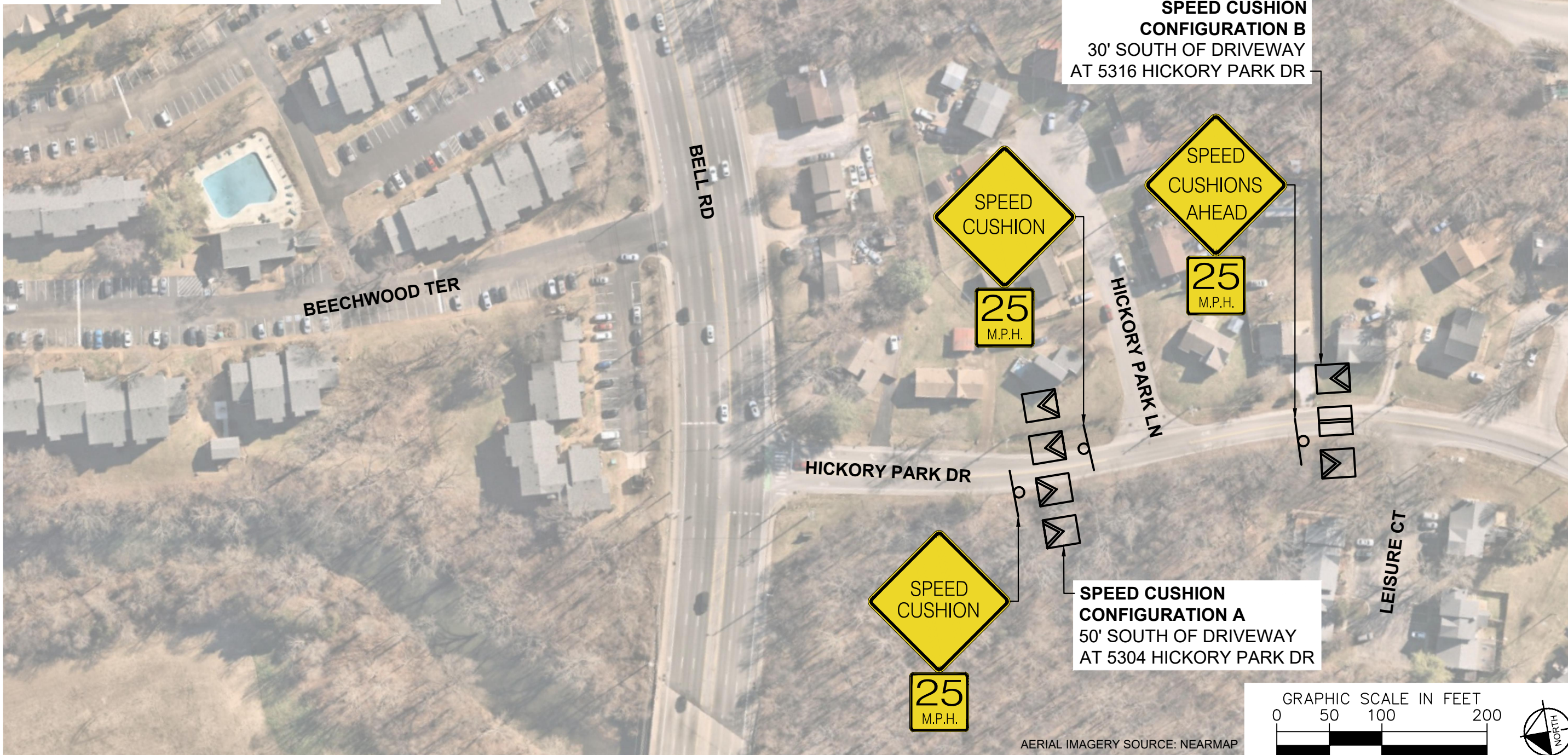
| | |
|-------------------------|------------|
| DESIGNED BY: | DJG |
| DRAWN BY: | ECK |
| CHECKED BY: | NDOT |
| DATE: | 12/30/2024 |
| KIMLEY-HORN PROJECT NO. | 118900051 |

KEY

SHEET NUMBER
01

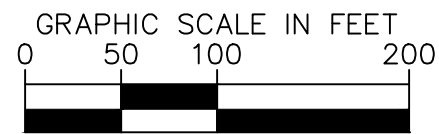
This document, together with the concepts and designs presented herein, is intended only for the specific purpose and client for which it was prepared. Reuse of and improper reliance on this document without written authorization and adaptation by Kimley-Horn and Associates, Inc. shall be without liability to Kimley-Horn and Associates, Inc.

SPEED CUSHIONS



SPEED CUSHION CONFIGURATION B
30' SOUTH OF DRIVEWAY
AT 5316 HICKORY PARK DR

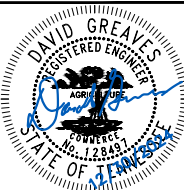
SPEED CUSHION CONFIGURATION A
50' SOUTH OF DRIVEWAY
AT 5304 HICKORY PARK DR



AERIAL IMAGERY SOURCE: NEARMAP



HICKORY PARK DRIVE
TRAFFIC CALMING
NASHVILLE, TN

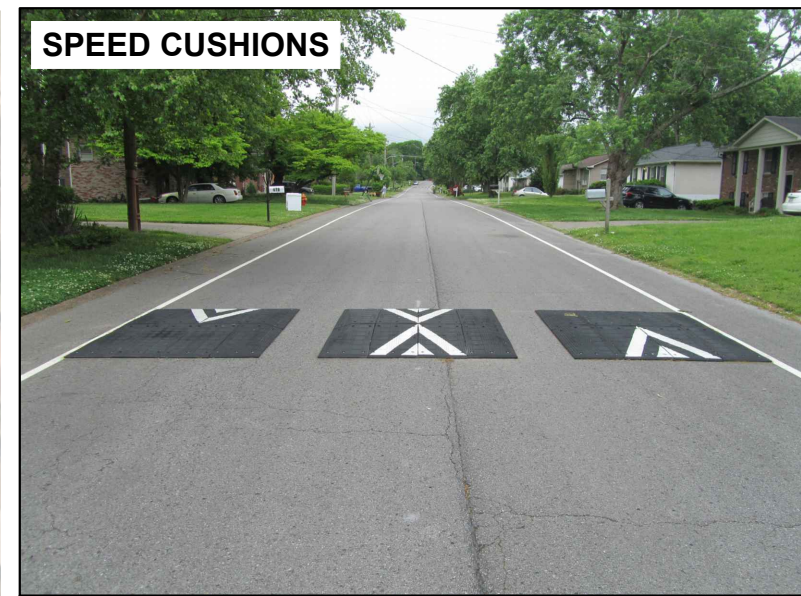
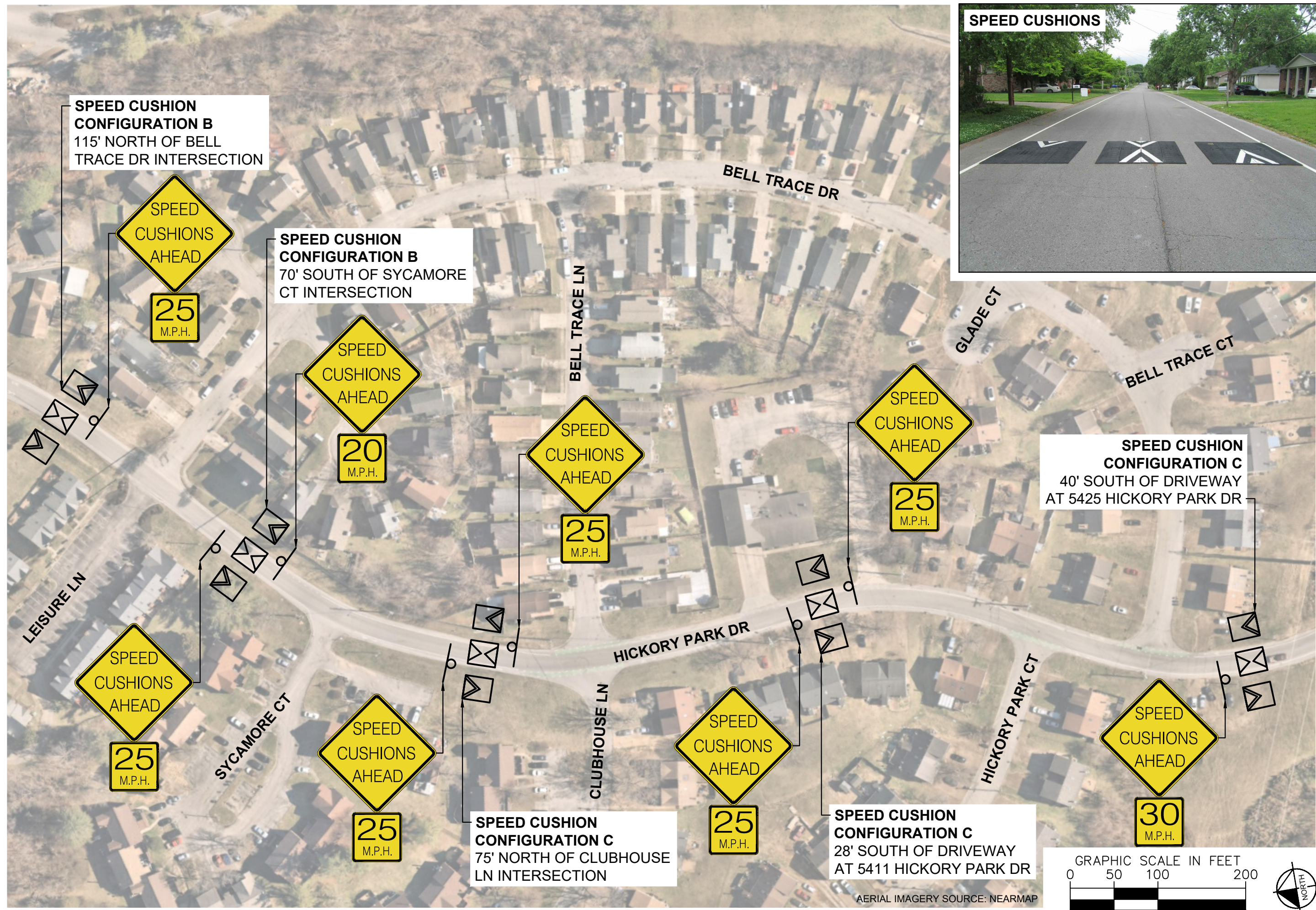


| | |
|-----------------------------------|------------|
| DESIGNED BY: | DJG |
| DRAWN BY: | ECK |
| CHECKED BY: | NDOT |
| DATE: | 12/30/2024 |
| KIMLEY-HORN PROJECT NO. 118800051 | |

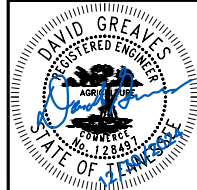
CONCEPT

SHEET NUMBER
02

This document, together with the concepts and designs presented herein, is intended only for the specific purpose and client for which it was prepared. Reuse or improper reliance on this document without written authorization and adaptation by Kimley-Horn and Associates, Inc. shall be without liability to Kimley-Horn and Associates, Inc.

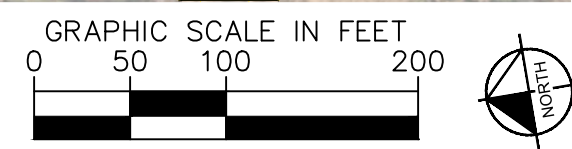


HICKORY PARK DRIVE
TRAFFIC CALMING
NASHVILLE, TN



| | |
|--------------------------|------------|
| DESIGNED BY: | DJG |
| DRAWN BY: | ECK |
| CHECKED BY: | NDOT |
| DATE: | 12/30/2024 |
| KIMLEY-HORN PROJECT NO.: | 11880051 |

CONCEPT
SHEET NUMBER
03

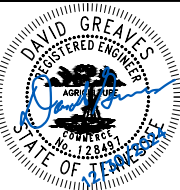


AERIAL IMAGERY SOURCE: NEARMAP

This document, together with the concepts and designs presented herein, is intended only for the specific purpose and client for which it was prepared. Reuse of and improper reliance on this document without written authorization and adaptation by Kimley-Horn and Associates, Inc. shall be without liability to Kimley-Horn and Associates, Inc.



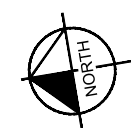
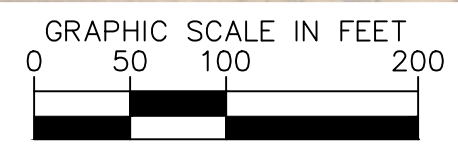
HICKORY PARK DRIVE
TRAFFIC CALMING
NASHVILLE, TN



| | |
|--------------------------|------------|
| DESIGNED BY: | DJG |
| DRAWN BY: | ECK |
| CHECKED BY: | NDOT |
| DATE: | 12/30/2024 |
| KIMLEY-HORN PROJECT NO.: | 118800051 |

CONCEPT

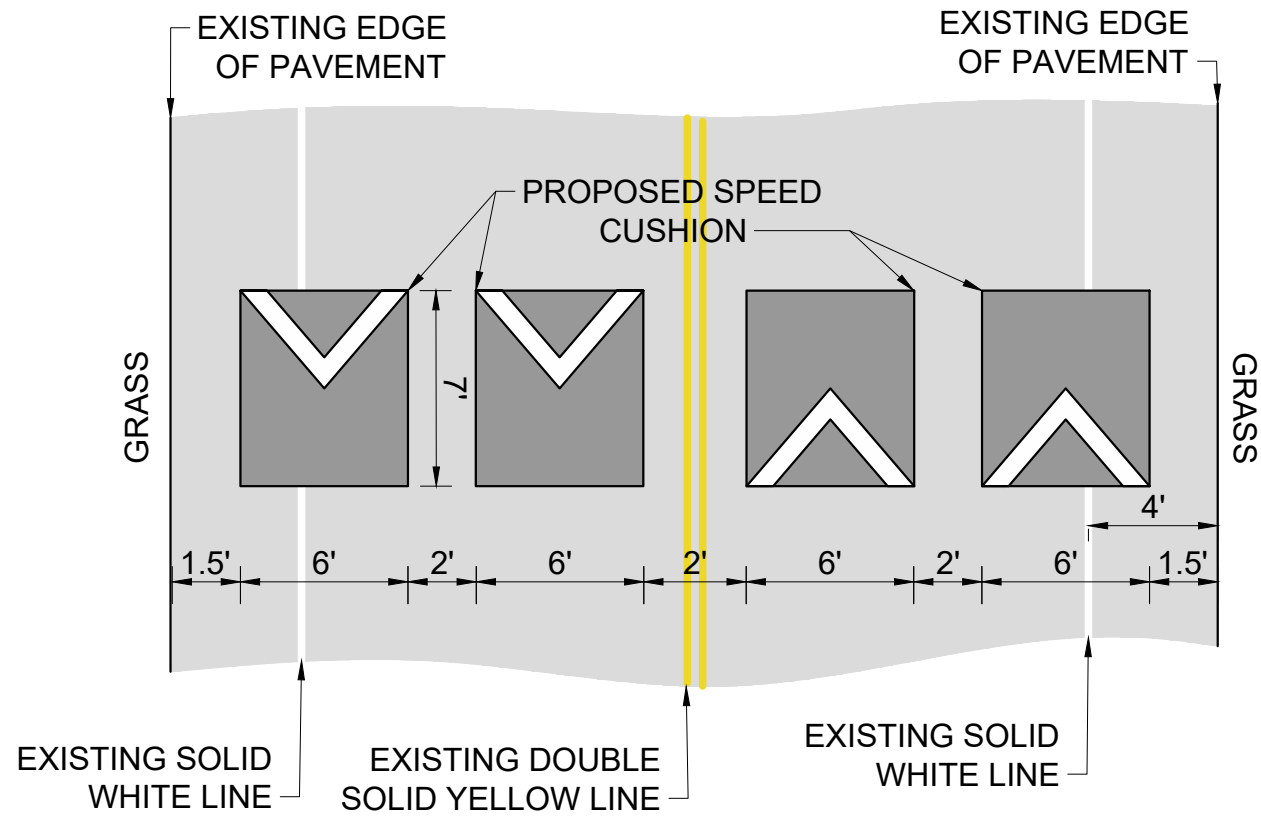
SHEET NUMBER
04



AERIAL IMAGERY SOURCE: NEARMAP

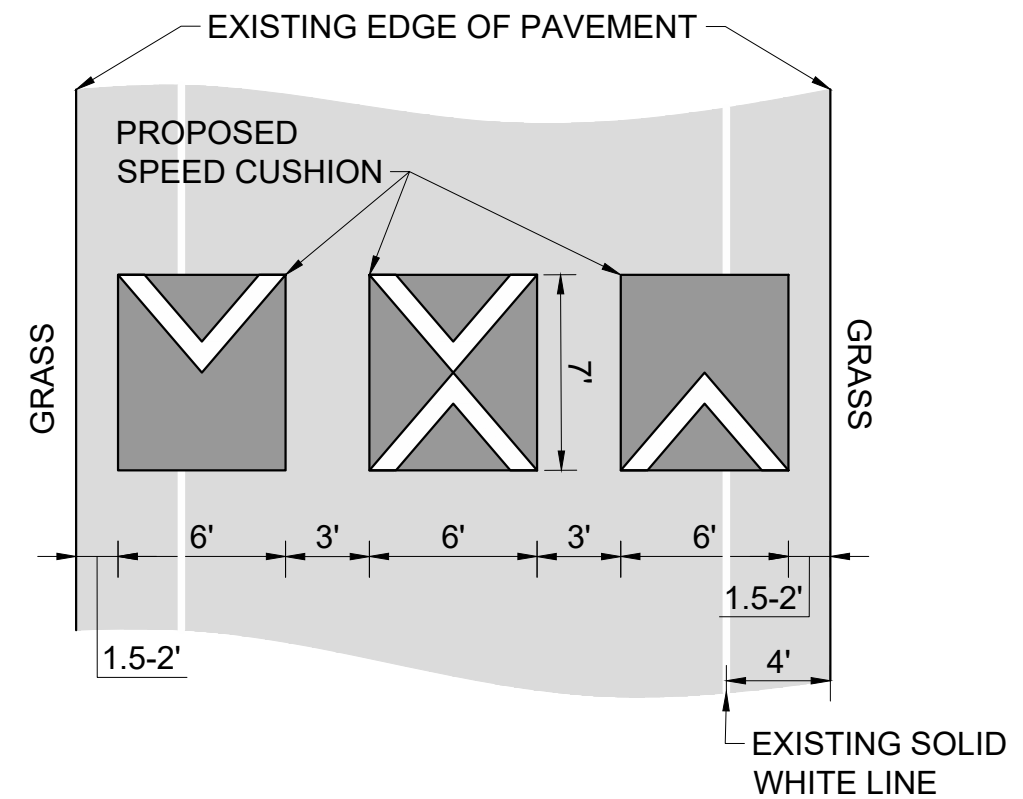
CONFIGURATION A

PAVEMENT WIDTH: 33'



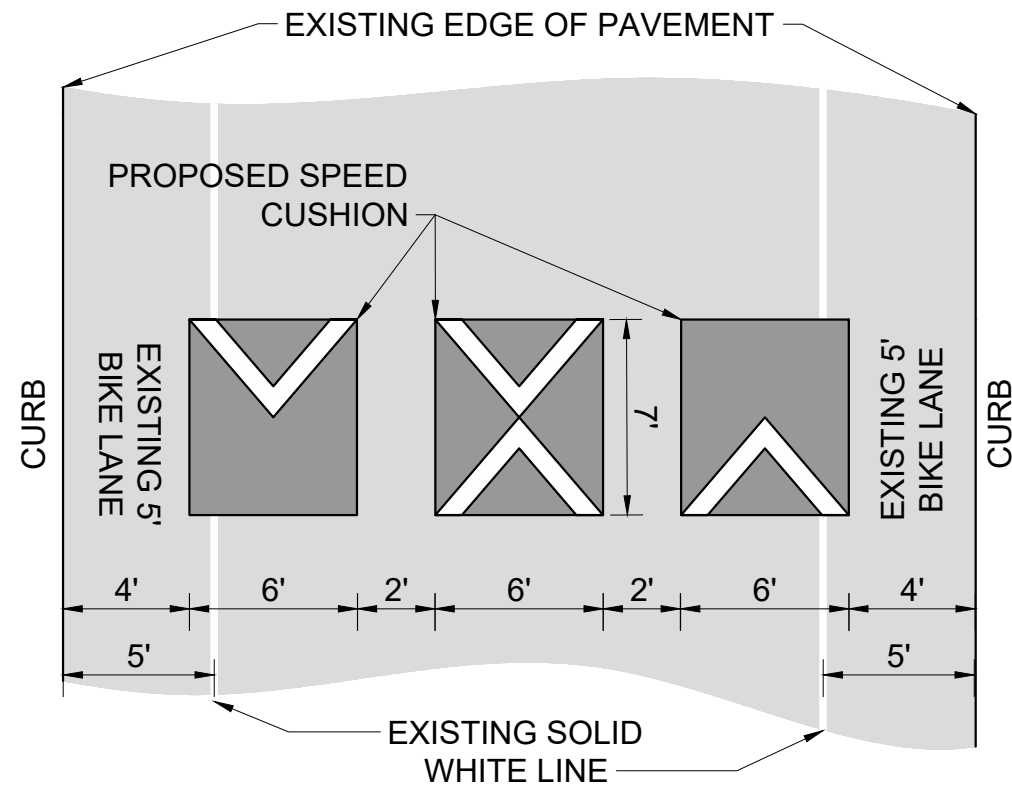
CONFIGURATION B

PAVEMENT WIDTH: 27-28'



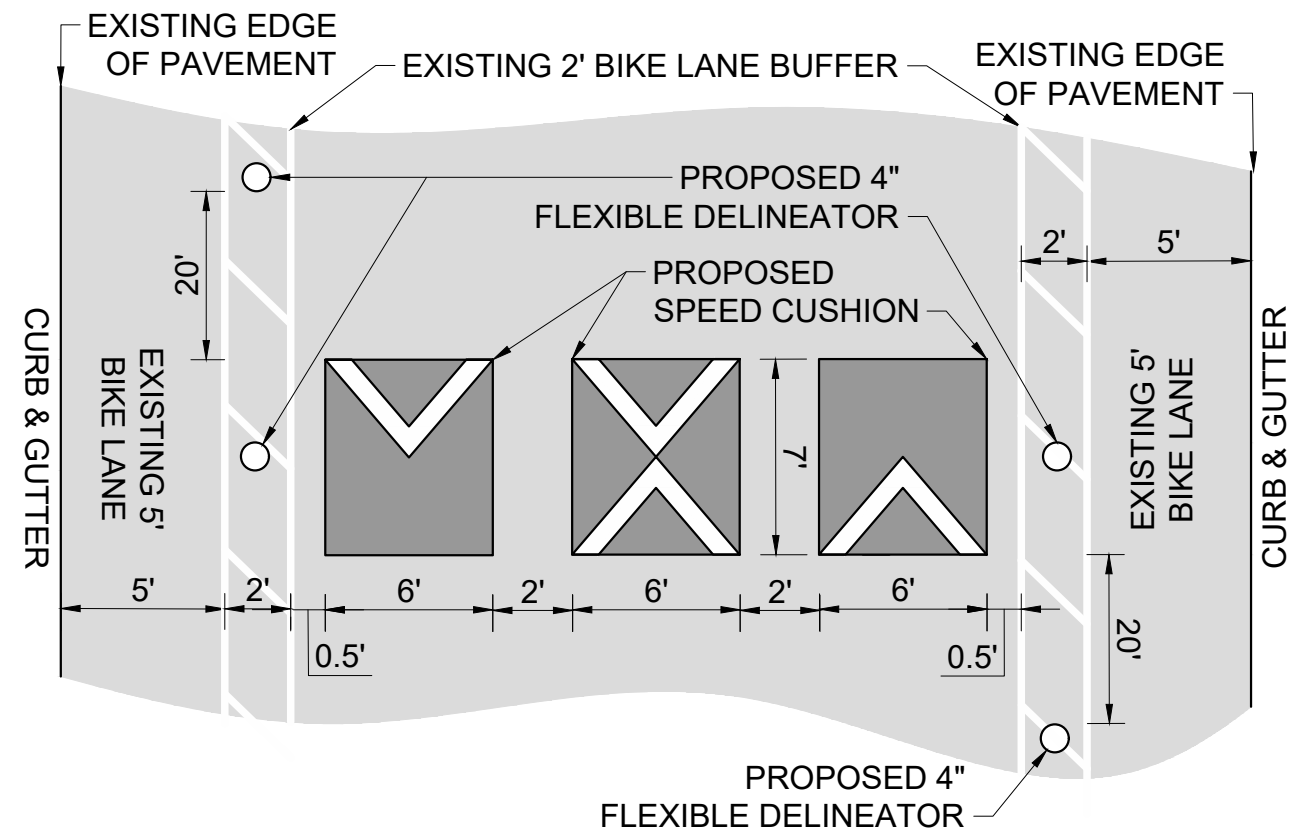
CONFIGURATION C

PAVEMENT WIDTH: 30'



CONFIGURATION D

PAVEMENT WIDTH: 37'



HICKORY PARK DRIVE
TRAFFIC CALMING
NASHVILLE, TN



| | |
|--------------------------|------------|
| DESIGNED BY: | DJG |
| DRAWN BY: | ECK |
| CHECKED BY: | NDOT |
| DATE: | 12/30/2024 |
| KIMLEY-HORN PROJECT NO.: | 118800251 |

DETAIL

SHEET NUMBER
05

This document, together with the concepts and designs presented herein, is intended only for the specific purpose and client for which it was prepared. Reuse of and improper reliance on this document without written authorization and adaptation by Kimley-Horn and Associates, Inc. shall be without liability to Kimley-Horn and Associates, Inc.