

ESTIMATED QUANTITIES

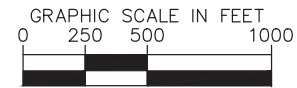
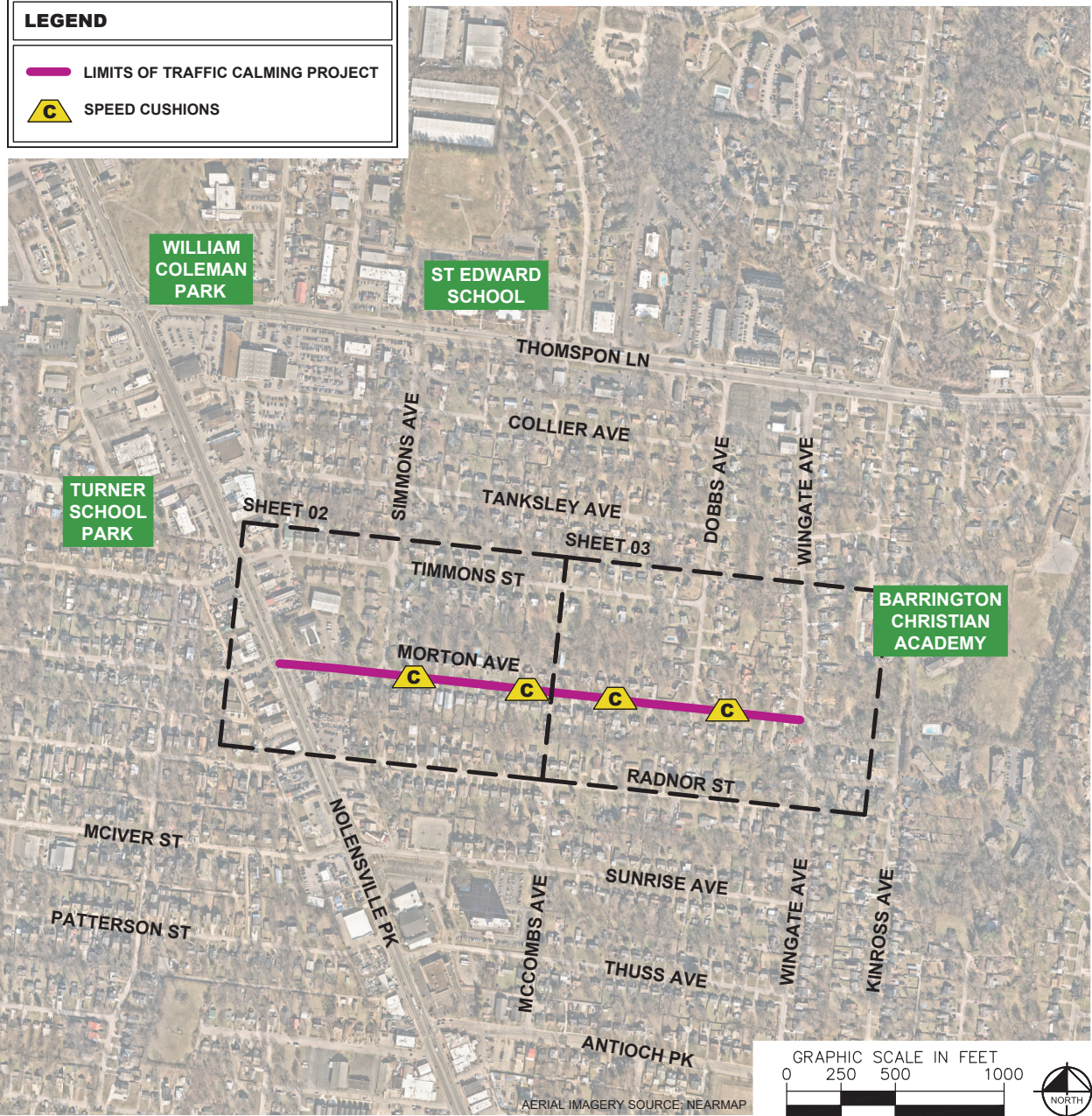
SPEED CUSHIONS

6' X 7' SPEED CUSHION WITH ONE ARROW	8
SIGNING	
W17-1 (VAR.) "SPEED CUSHION" SIGN (30" X 30")	2
W17-1 (VAR.) "SPEED CUSHIONS AHEAD" SIGN (30" X 30")	2
W13-1P "20 M.P.H." SIGN (18" X 18")	4

NOTE: ALL LOCATIONS ARE REFERENCED FROM CENTERLINE OF DRIVEWAYS OR OTHER LANDMARKS TO THE CENTER OF SPEED CUSHIONS OR SIGNS.

LEGEND

-  LIMITS OF TRAFFIC CALMING PROJECT
-  SPEED CUSHIONS



AERIAL IMAGERY SOURCE: NEARMAP

This document, together with the contracts and design plans herein, is an instrument of service. It is intended only for the project, location and date for which it was prepared. Plans of any change and date for which it was prepared. Plans of any change and date for which it was prepared. Plans of any change and date for which it was prepared.

Drawing name: K:\NSH_1PT011980051 - traffic calming3 - design1 - spring 2024\10 - morton ave\Design\CAD\plansheets\Morton Ave-TrafficCalming.dwg 01-KEY Jun 02, 2025 2:35pm by David Greaves



MORTON AVENUE
TRAFFIC CALMING
NASHVILLE, TN



DESIGNED BY:	JLF
DRAWN BY:	PLS
CHECKED BY:	NDOT
DATE:	10/20/25
SCALE: HORN PROJECT NO:	11890048

KEY
SHEET NUMBER
01

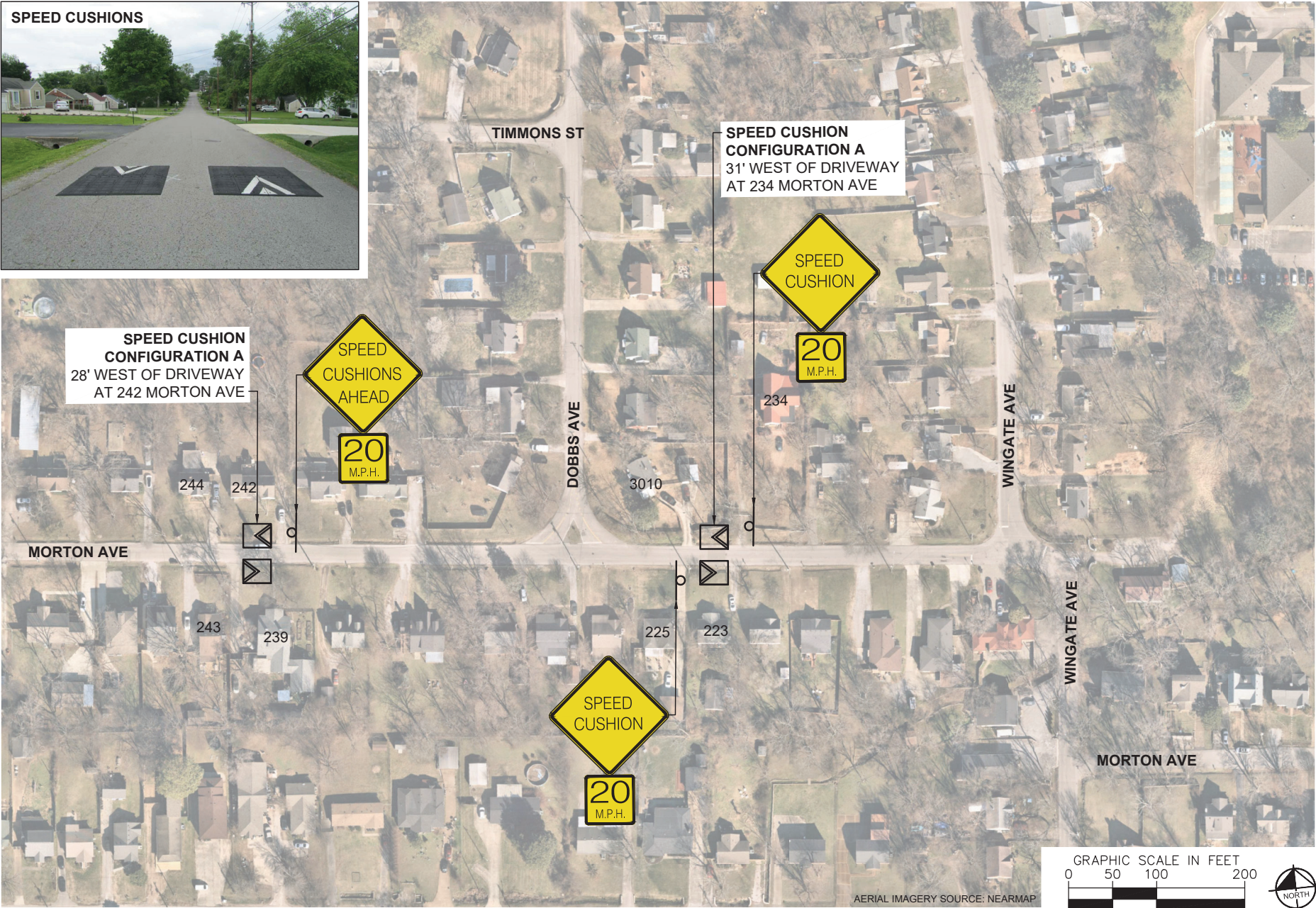
SPEED CUSHIONS



SPEED CUSHION CONFIGURATION A
28' WEST OF DRIVEWAY
AT 242 MORTON AVE



SPEED CUSHION CONFIGURATION A
31' WEST OF DRIVEWAY
AT 234 MORTON AVE



AERIAL IMAGERY SOURCE: NEARMAP



MORTON AVENUE
TRAFFIC CALMING
NASHVILLE, TN



DESIGNED BY:	JLF
DRAWN BY:	PLS
CHECKED BY:	NDOT
DATE:	1/2/2025
MOSELEY-HORN PROJECT NO.:	11850048

CONCEPT

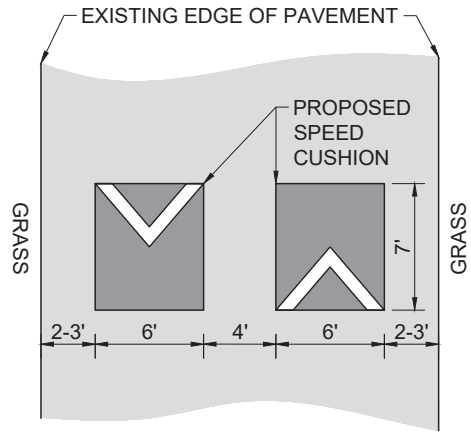
SHEET NUMBER
03

This document, together with the contracts and design plans, is the property of the State of Tennessee and is loaned to you for your use only. It is not to be distributed, copied, or otherwise used without the written permission of the State of Tennessee. It is to be returned to the State of Tennessee upon completion of the project.

This document, together with the concepts and design shown herein, is an instrument of service. It is intended only for the specific purpose and project for which it was prepared. Plans of any change and use on this document without written authorization are prohibited by statute, rule and regulation. No part of this document may be reproduced or transmitted in any form or by any means, electronic or mechanical, including photocopying, recording, or by any information storage and retrieval system, without the prior written permission of the engineer.

CONFIGURATION A

PAVEMENT WIDTH: 20-22'



MORTON AVENUE
TRAFFIC CALMING
NASHVILLE, TN



DESIGNED BY:	JLH
DRAWN BY:	PLB
CHECKED BY:	NDOT
DATE:	1/22/2025
MSALEY-HORN PROJECT NO.:	11820048

DETAIL

SHEET NUMBER

04